

LAYER STACKUP

ALL LAYERS 1/2 OZ CU TO START

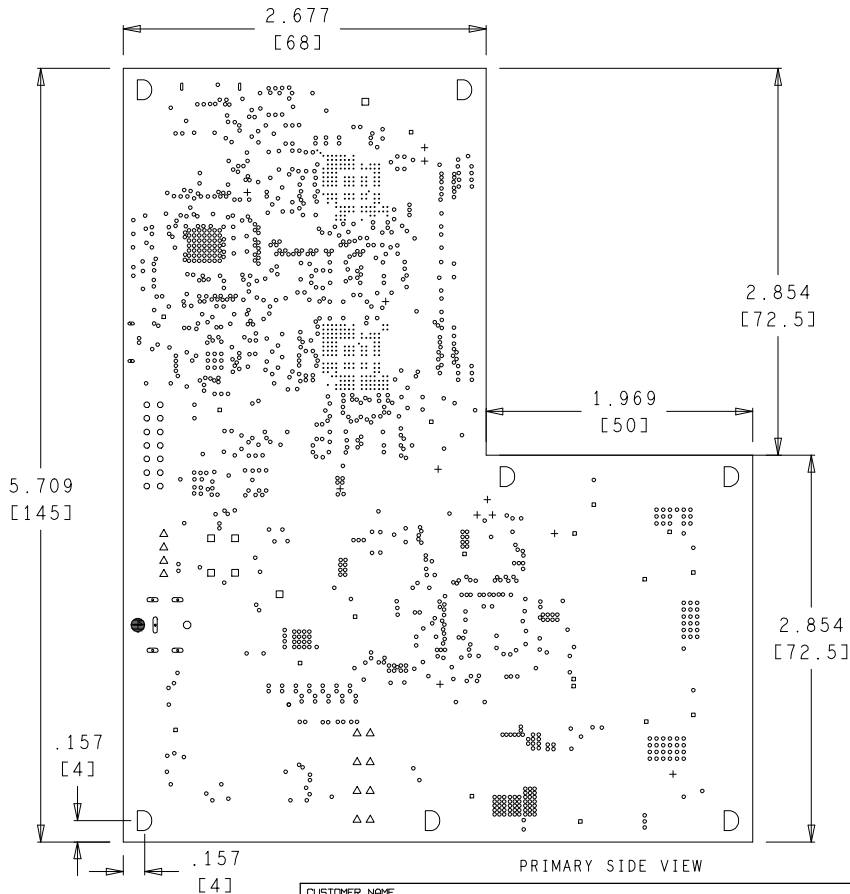
LAYER 1 - TOP SIDE, 0.0085 WIDTH - 50 OHMS,
0.004 WIDTH - 68 OHMS, 0.0065
WIDTH/0.0055 SPACE - 90 OHMS DIFF.
0.0055 WIDTH/0.0065 SPACE - 100 OHMS DIFF
LAYER 2 - GND PLANE
LAYER 3 - SIGNAL, 0.0047 WIDTH - 50 OHMS,
0.0048 WIDTH/0.0072 SPACE - 90 OHMS DIFF
LAYER 4 - GND PLANE
LAYER 5 - PWR PLANE/MIXED, 0.0047 WIDTH - 50 OHMS
LAYER 6 - SIGNAL, 0.0047 WIDTH - 50 OHMS
LAYER 7 - GND PLANE
LAYER 8 - BOTTOM SIDE, 0.0085 WIDTH - 50 OHMS,
0.004 WIDTH - 68 OHMS, 0.0065
WIDTH/0.0055 SPACE - 90 OHMS DIFF.
0.0055 WIDTH/0.0065 SPACE - 100 OHMS DIFF

FAB NOTES:

1. ALL DIMENSIONS ARE IN INCHES, UNLESS OTHERWISE NOTED.
2. THE PWB SHALL BE FABRICATED TO IPC-6012, CLASS 2 AND WORKMANSHIP SHALL CONFORM TO IPC-A-600, CLASS 2. CURRENT REVISIONS.
3. BOARD MATERIAL SHALL BE 180 Tg/350 Td ISOLA FR-370HR OR EQUIVALENT. ROHS COMPLIANT AND LEAD FREE ASSEMBLY CAPABLE. BOARD MATERIAL SHALL MEET OR EXCEED IPC-4101B. COLOR: NATURAL.
4. BOARD MATERIAL & CONSTRUCTION TO BE U.L. APPROVED AND MARKED ON THE FINISHED BOARD.
5. MINIMUM COPPER WALL THICKNESS OF PLATED-THRU HOLES TO BE .001 INCH, WITH A MINIMUM ANNULAR RING OF .002 INCH.
6. OVERALL BOARD THICKNESS TO BE .080 +/- 10% AND APPLIES AFTER ALL LAMINATION AND PLATING PROCESSES, MEASURED FROM COPPER TO COPPER.
7. MAX. WARP & TWIST TO BE .0075 INCHES PER INCH.
8. BOARD MUST BE ELECTRICALLY TESTED USING SUPPLIED IPC-D-356 NETLIST.

PROCESS NOTES:

1. PLATE ALL EXPOSED AREAS WITH ELECTROLESS IMMERSION GOLD. NICKEL 150 MICROINCHES THK MIN. GOLD 2-6 MICROINCHES THK MIN.
2. APPLY LPI SOLDERMASK OVER BARE COPPER (SMOBC). COLOR: RED. SOLDERMASK SHALL CONFORM TO IPC-SM-840, CLASS H. CURRENT REV.
3. EXCEPT AS NOTED BELOW, SOLDERMASK ARTWORK HAS ZERO (0) OVERSIZED PADS. FABRICATION VENDOR IS ALLOWED TO ADJUST THE COMPONENT SOLDERMASK PADS TO MEET THEIR TOOLING REQUIREMENTS. FABRICATION VENDOR MUST MAINTAIN A MINIMUM WEB OF .0035.
4. 15.5 MIL PADS UNDER UDLPC.S AND UDLPC.M HAVE SOLDERMASK DEFINED OPENINGS OF 14 MILS WHICH ARE NOT TO BE CHANGED BY FABRICATION VENDOR.
5. APPLY LPI SILKSCREEN OR EQUIVALENT PER THE ARTWORK. COLOR: WHITE.



DRILL CHART: TOP to BOTTOM ALL UNITS ARE IN MILS

FIGURE	SIZE	TOLERANCE	PLATED	QTY
.	9.0	+3.0/-9.0	PLATED	296
o	10.0	+3.0/-10.0	PLATED	1158
o	20.0	+3.0/-3.0	PLATED	19
+	30.0	+3.0/-3.0	PLATED	12
.	33.465	+3.0/-3.0	PLATED	2
Δ	35.0	+3.0/-3.0	PLATED	12
□	40.0	+3.0/-3.0	PLATED	6
o	42.0	+3.0/-3.0	PLATED	14
o	55.0	+3.0/-3.0	PLATED	1
D	146.0	+3.0/-3.0	PLATED	7
o	20.0	+3.0/-3.0	NON-PLATED	5
+	63.386	+3.0/-3.0	NON-PLATED	1
o	45.276x19.685	+3.0/-3.0	PLATED	2
o	51.181x17.717	+3.0/-3.0	PLATED	2
o	78.74x31.496	+3.0/-3.0	PLATED	4
o	118.11x31.496	+3.0/-3.0	PLATED	1

CUSTOMER NAME		TEXAS INSTRUMENTS			
BOARD NAME		DLP LightCrafter Display		DESCRIPTION	
		4710 EVM		DRILL DRAWING	
BOARD NO.	REV	DATE	PRJ#	SH	OF
DLPDLCR4710EVM	B	27-JAN-15	TIDLPC-108976-01		19

