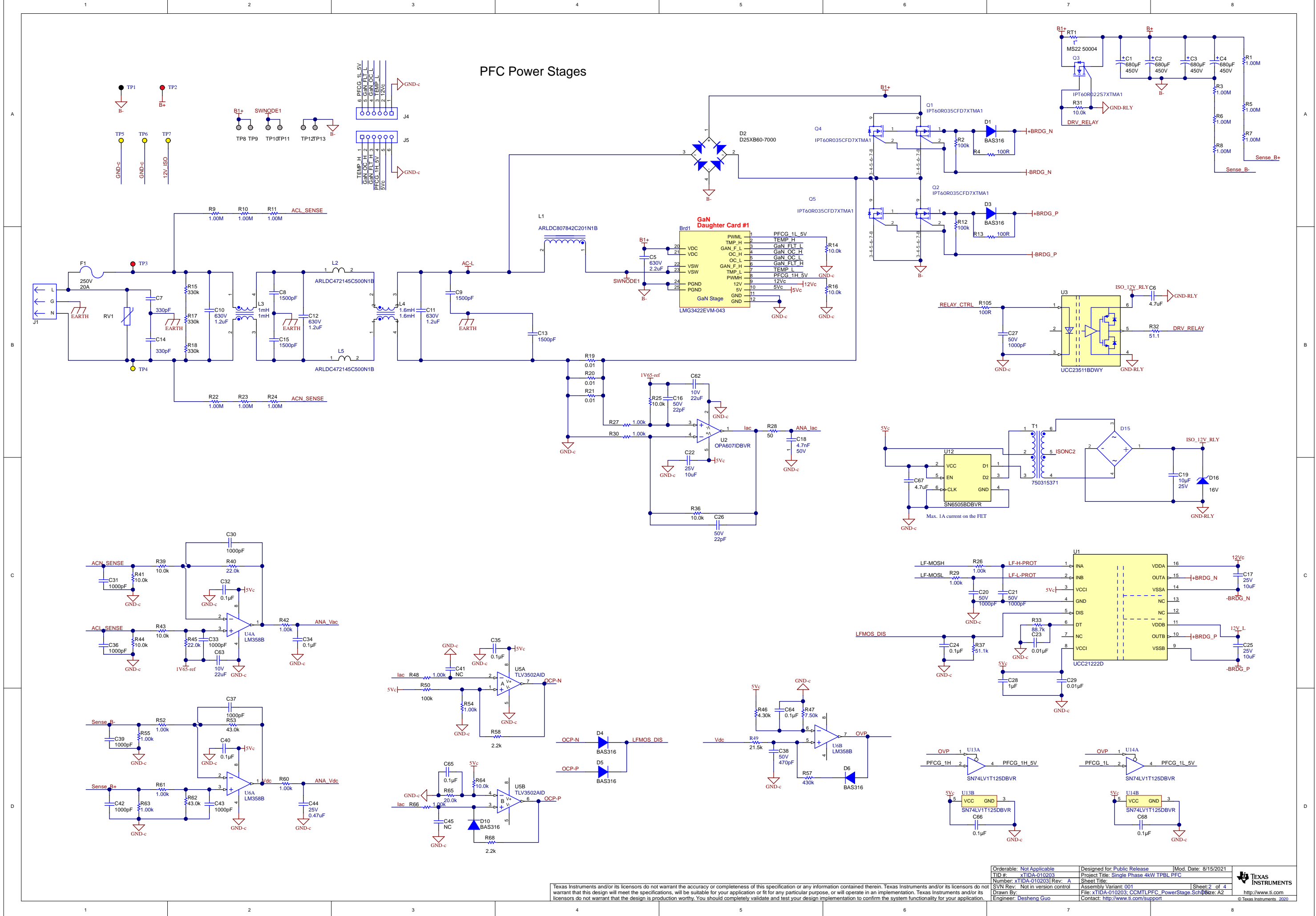
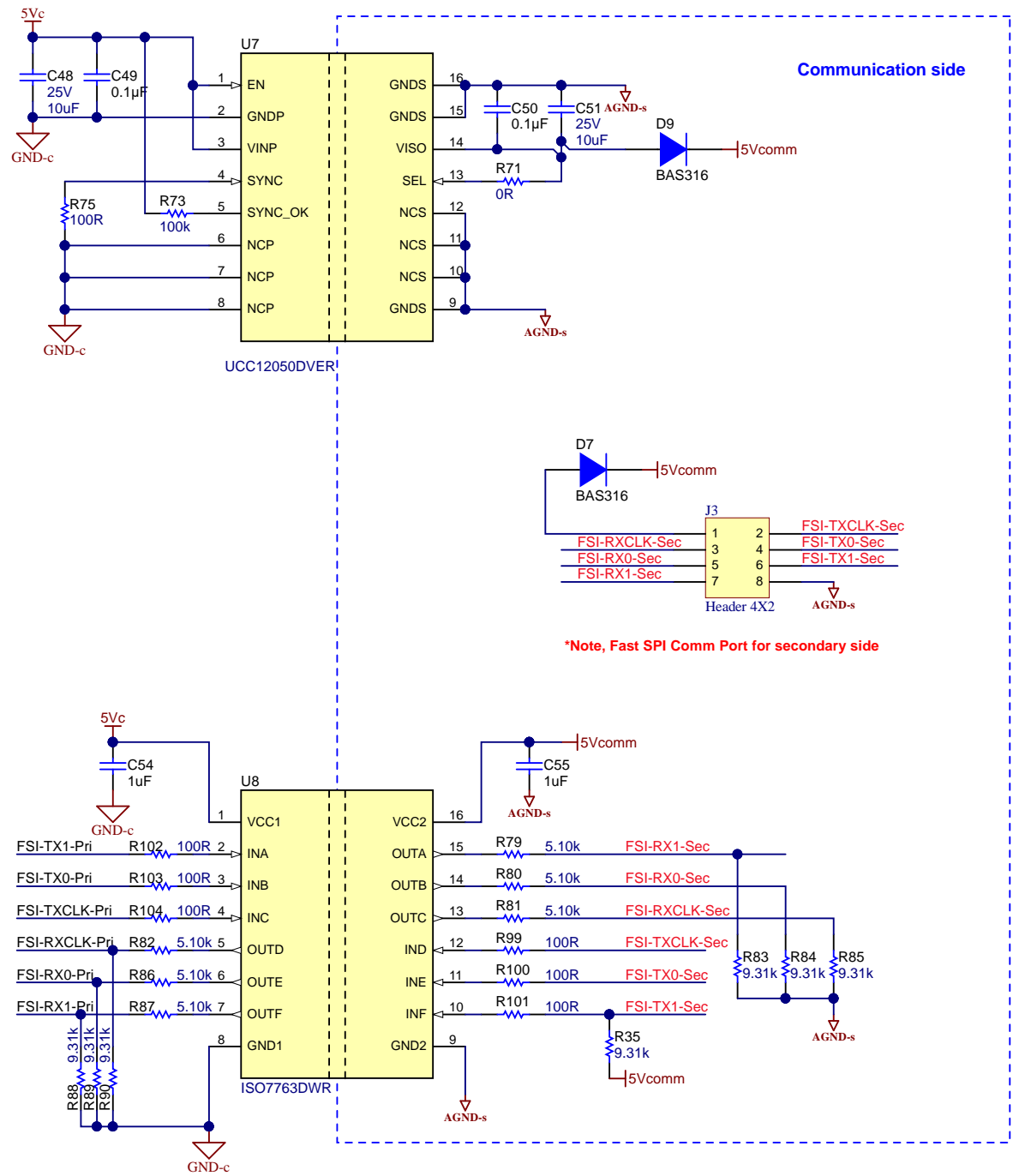
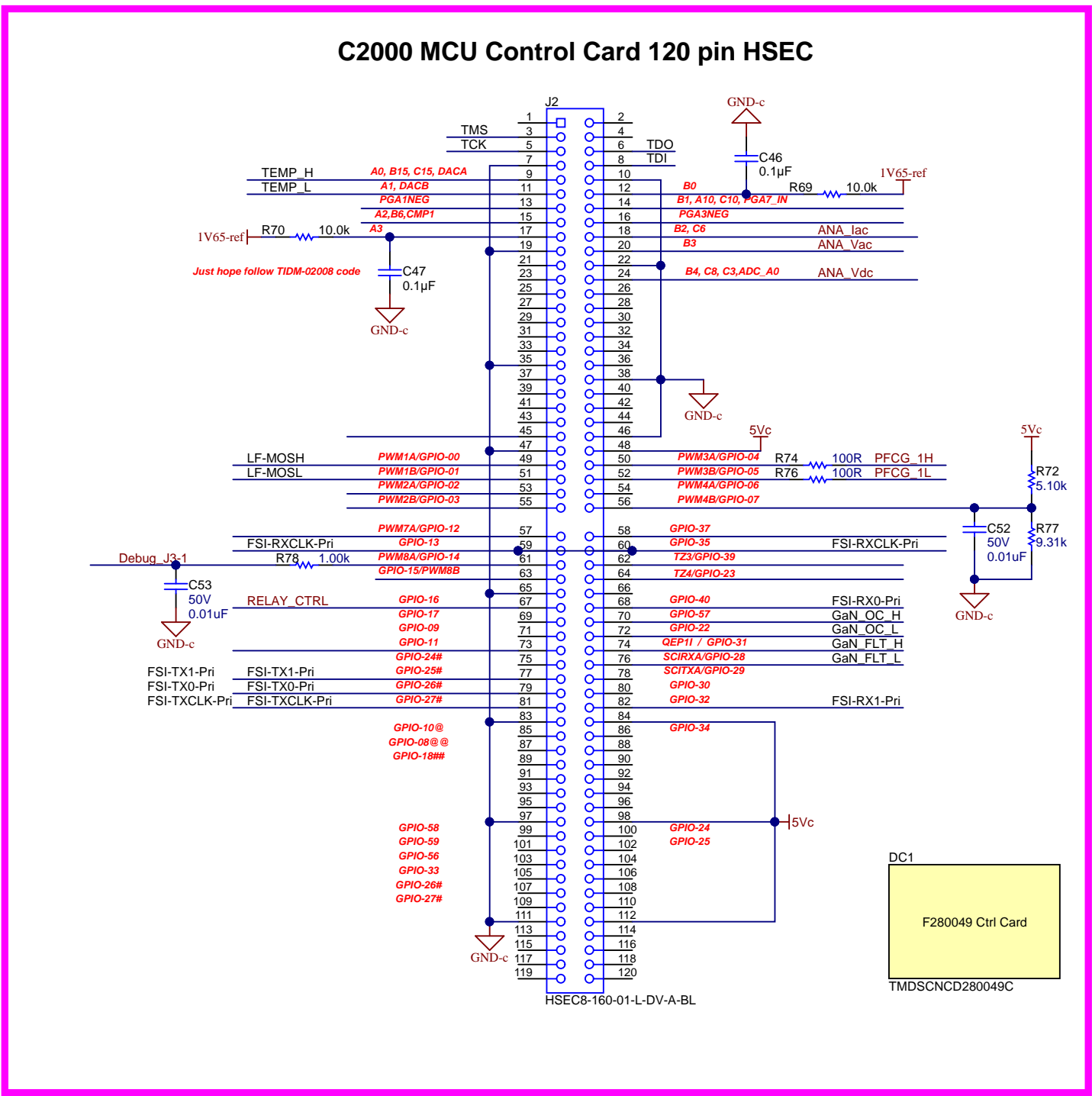
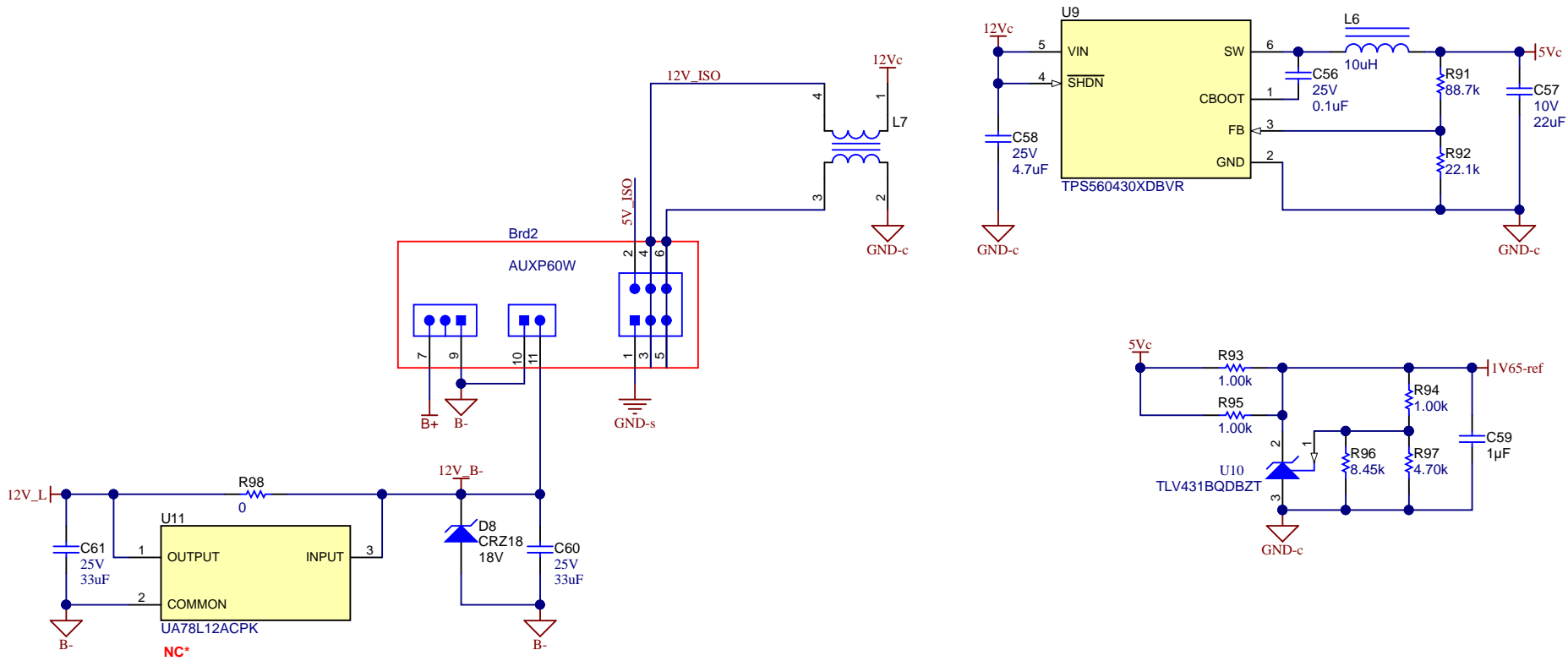


Texas Instruments and/or its licensors do not warrant the accuracy or completeness of this specification or any information contained therein. Texas Instruments and/or its licensors do not warrant that this design will meet the specifications, will be suitable for your application or fit for any particular purpose, or will operate in an implementation. Texas Instruments and/or its licensors do not warrant that the design is production worthy. You should completely validate and test your design implementation to confirm the system functionality for your application.





Aux Power Stage



CAUTION HOT SURFACE



DANGER HIGH VOLTAGE

PCB
LOGO
FCC disclaimer

PCB
LOGO
WEEE logo



CAUTION HOT SURFACE



DANGER HIGH VOLTAGE



FID1



FID2



FID3

PCB Number: xTIDA-010203
PCB Rev: A

PCB
LOGO
Texas Instruments

LBL1

PCB Label

THT-14-423-10
Size: 0.65" x 0.20 "



NY PMS 440 0025 PH



NY PMS 440 0025 PH



1902C



1902C



NY PMS 440 0025 PH



NY PMS 440 0025 PH



NY PMS 440 0025 PH



1902C



1902C

Texas Instruments and/or its licensors do not warrant the accuracy or completeness of this specification or any information contained therein. Texas Instruments and/or its licensors do not warrant that this design will meet the specifications, will be suitable for your application or fit for any particular purpose, or will operate in an implementation. Texas Instruments and/or its licensors do not warrant that the design is production worthy. You should completely validate and test your design implementation to confirm the system functionality for your application.

Orderable:	Not Applicable	Designed for:	Public Release	Mod. Date:	3/25/2021
TID #:	xTIDA-010203	Project Title:	Single Phase 4kW TPBL PFC		
Number:	xTIDA-010203	Rev:	A	Sheet Title:	
SVN Rev:	Not in version control	Assembly Variant:	001	Sheet:	4 of 4
Drawn By:		File:	xTIDA-010203; CCMTLPFC_AuxP_UCC28740; Size: A3		
Engineer:	Desheng Guo	Contact:	http://www.ti.com/support		