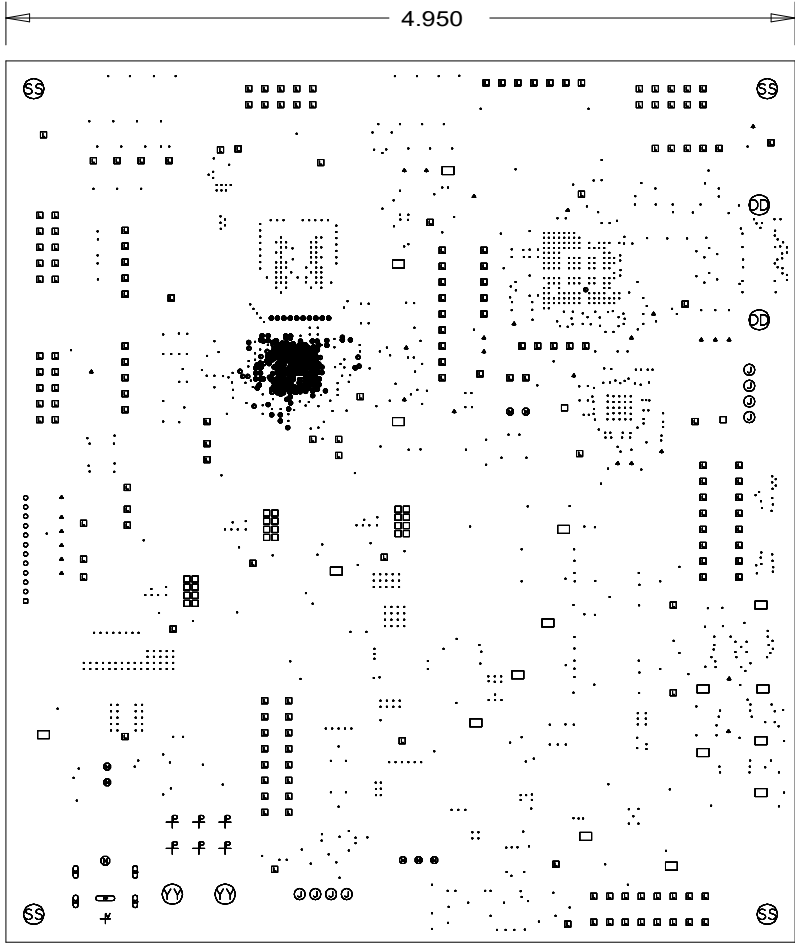


\*\*\* 8 MIL TRACES ON LAYER 1 ARE REFERENCED TO LAYER 3.

				SINGLE ENDED		DIFFERENTIAL			VIA PLAN									
LAYER	DEFINITION	PREPREG/CORE THICKNESS (MILS)	STARTING Cu WT.	TRACE WIDTH (MILS)	IMPEDANCE +/-10%	TRACE WIDTH (MILS)	TRACE SPACE (MILS)	IMPEDANCE +/-10%										
	SILKSCREEN																	
	SOLDERMASK																	
1	SIGNAL		1/4 OZ	5.20	50	3.80	7.20	100										
1				8 ***	65													
PREPREG		3.40																
2	PLANE		1/4 OZ															
PREPREG		3.30																
3	SIGNAL		1/4 OZ	4.50	50													
CORE		8.40																
4	SIGNAL		1/2 OZ	6.50	50	5.0	6.0	100										
PREPREG		5.0																
5	PLANE		1/2 OZ															
CORE		9.20																
6	PLANE		1/2 OZ															
PREPREG		5.0																
7	SIGNAL		1/2 OZ	6.50	50													
CORE		8.40																
8	SIGNAL		1/4 OZ	4.50	50													
PREPREG		3.30																
9	PLANE		1/4 OZ															
PREPREG		3.40																
10	SIGNAL		1/4 OZ	5.20	50	3.80	7.20	100										
10																		
	SOLDERMASK																	
	SILKSCREEN																	

LAYER STACKUP



FAB NOTES:

1. ALL DIMENSIONS ARE IN INCHES, UNLESS OTHERWISE NOTED.
2. THE PWB SHALL BE FABRICATED TO IPC-6012, CLASS 2 AND WORKMANSHIP SHALL CONFORM TO IPC-A-600, CLASS 2. CURRENT REVISIONS.
3. BOARD MATERIAL SHALL BE 180 Tg/350 Td ISOLA FR-370HR OR EQUIVALENT, RoHS COMPLIANT AND LEAD FREE ASSEMBLY CAPABLE. BOARD MATERIAL SHALL MEET OR EXCEED IPC-4101B. COLOR: NATURAL.
4. ALL BOARDS MUST MEET OR EXCEED UL94V-0 REQUIREMENTS. PCB MUST BEAR THE UL94V-0 UL REGISTERED MATERIAL ID NUMBER.
5. MINIMUM COPPER WALL THICKNESS OF PLATED-THRU HOLES TO BE .001 INCH, WITH A MINIMUM ANNULAR RING OF .002 INCH.
6. OVERALL BOARD THICKNESS TO BE .062+/- 10% AND APPLIES AFTER ALL LAMINATION AND PLATING PROCESSES, MEASURED FROM COPPER TO COPPER.
7. MAX. WARP & TWIST TO BE .0075 INCHES PER INCH.
8. BOARD MUST BE ELECTRICALLY TESTED USING SUPPLIED IPC-D-356 NETLIST.
9. BOARD SHOP MAY ADJUST LINE WIDTH FOR PROPER IMPEDANCE PLEASE SUPPLY ADJUSTED STACKUP FOR APPROVAL.
10. MICRO VIAS MUST BE PLANARIZED PRIOR TO PLATING.
11. THRU VIAS IN SMT PADS MUST BE FILLED AND PLANARIZED PRIOR TO PLATING.
12. MINIMUM TRACE/SPACE ON THIS DESIGN IS 0.003"/0.003.

PROCESS NOTES:

1. PLATE ALL EXPOSED AREAS WITH ELECTROLESS IMMERSION GOLD, NICKEL 150 MICROINCHES THK MIN GOLD 5-15 MICROINCHES THK MIN.
2. APPLY LPI SOLDERMASK OVER BARE COPPER (SMOBC), COLOR: GREEN. SOLDERMASK SHALL CONFORM TO IPC-SM-840, CLASS H. CURRENT REV.
3. EXCEPT AS NOTED BELOW, SOLDERMASK ARTWORK HAS ZERO (0) OVERSIZED PADS. FABRICATION VENDOR IS ALLOWED TO ADJUST THE COMPONENT SOLDERMASK PADS TO MEET THEIR TOOLING REQUIREMENTS. FABRICATION VENDOR MUST MAINTAIN A MINIMUM WEB OF .0035.
4. APPLY LPI SILKSCREEN OR EQUIVALENT PER THE ARTWORK. COLOR: WHITE.

DRILL CHART: TOP to LY2GND

ALL UNITS ARE IN MILS

FIGURE	SIZE	TOLERANCE	PLATED	QTY
•	6.0	+3.0/-6.0	PLATED	169

DRILL CHART: LY2GND to LY3

ALL UNITS ARE IN MILS

FIGURE	SIZE	TOLERANCE	PLATED	QTY
•	6.0	+3.0/-6.0	PLATED	123

DRILL CHART: LY3 to LY8

ALL UNITS ARE IN MILS

FIGURE	SIZE	TOLERANCE	PLATED	QTY
•	6.0	+0.0/-6.0	PLATED	71

DRILL CHART: LY8 to LY9GND

ALL UNITS ARE IN MILS

FIGURE	SIZE	TOLERANCE	PLATED	QTY
•	6.0	+3.0/-6.0	PLATED	42

DRILL CHART: LY9GND to BOTTOM

ALL UNITS ARE IN MILS

FIGURE	SIZE	TOLERANCE	PLATED	QTY
•	6.0	+3.0/-6.0	PLATED	69

DRILL CHART: TOP to BOTTOM

ALL UNITS ARE IN MILS

FIGURE	SIZE	TOLERANCE	PLATED	QTY
•	9.0	+0.0/-9.0	PLATED	1084
□	12.0	+3.0/-12.0	PLATED	24
•	24.0	+3.0/-3.0	PLATED	29
□	28.0	+0.0/-0.0	PLATED	1
•	28.0	+3.0/-3.0	PLATED	11
⊙	35.0	+3.0/-3.0	PLATED	8
□	40.0	+0.0/-0.0	PLATED	2
⊞	40.0	+3.0/-3.0	PLATED	170
•	42.0	+3.0/-3.0	PLATED	7
⊞	55.0	+3.0/-3.0	PLATED	1
□	63.0	+3.0/-3.0	PLATED	17
⋈	71.0	+3.0/-3.0	PLATED	6
⊞	100.0	+3.0/-3.0	PLATED	2
⋈	63.386	+2.0/-2.0	NON-PLATED	1
⊞	118.0	+3.0/-3.0	NON-PLATED	2
⊞	128.0	+3.0/-3.0	NON-PLATED	4
⊞	78.74x31.496	+3.0/-3.0	PLATED	4
⊞	118.11x31.496	+3.0/-3.0	PLATED	1

PRIMARY SIDE VIEW

CUSTOMER NAME		TEXAS INSTRUMENTS	
BOARD NAME		DLPC1438/DLPA2005 REFERENCE BOARD	DESCRIPTION DRILL DRAWING
BOARD NO.	2511671	REV A	DATE 30-JUN-2021
PRJ#	TIDL-121032-01	SH	17 OF 17

