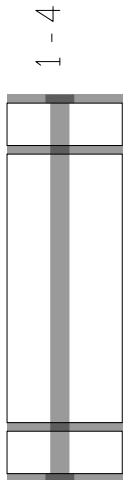


- FAB NOTES:
1. ALL DIMENSIONS ARE IN INCHES, UNLESS OTHERWISE NOTED.
 2. THE PWB SHALL BE FABRICATED TO IPC-6012, CLASS 2 AND WORKMANSHIP SHALL CONFORM TO IPC-A-600, CLASS 2. CURRENT REVISIONS.
 3. BOARD MATERIAL SHALL BE 180 Tg/340 Td ISOLA FR-370HR OR EQUIVALENT, RgHS/REACH COMPLIANT AND LEAD FREE ASSEMBLY CAPABLE. BOARD MATERIAL SHALL MEET OR EXCEED IPC-4101B, RgHS/REACH CERTIFICATE OF CONFORMANCE SHALL BE DELIVERED WITH EACH LOT.
 4. BOARD MATERIAL & CONSTRUCTION TO BE U.L. 94V-0 APPROVED AND MARKED ON THE FINISHED BOARD.UL GUIDE NUMBER SHOULD BE MARKED ON THE FINISHED BOARD.
 5. OVERALL BOARD THICKNESS TO BE .063 +/--.005" AND APPLIES AFTER ALL LAMINATION AND PLATING PROCESSES, MEASURED FROM COPPER TO COPPER.
 6. MAX. WARP & TWIST TO BE .0075 PER INCH.
 7. BOARD MUST BE ELECTRICALLY TESTED USING SUPPLIED IPC-D-356 NETLIST.
 8. 14 MIL TRACES ON LAYER 1 ARE 50 OHMS +/-10%. THEY ARE REFERENCE TO LAYER 2 GROUND WITH SOLDERMASK CLEAR AWAY.

- PROCESS NOTES:
1. APPLY LP1 SOLDERMASK OVER BARE COPPER (SMORG). SOLDERMASK SHALL CONFORM TO IPC-SM-840, CLASS H, CURRENT REV. COLOR OF MASK TO BE RED.
 2. PLATE ALL EXPOSED AREAS WITH ELECTROLESS NICKEL IMMERSION GOLD. NICKEL:100 MICRO-INCHES MIN. GOLD:2-8 MICROINCHES MIN.
 3. SOLDERMASK ARTWORK HAS ZERO (0) OVERSIZED PADS. FABRICATION VENDOR IS ALLOWED TO ADJUST THE COMPONENT SOLDERMASK PADS TO MEET THEIR TOOLING REQUIREMENTS.
 4. APPLY NON-CONDUCTIVE LP1 SILKSCREEN OR EQUIVALENT PER THE ARTWORK. COLOR: WHITE.
 5. ALL VIAS ARE TENTED.

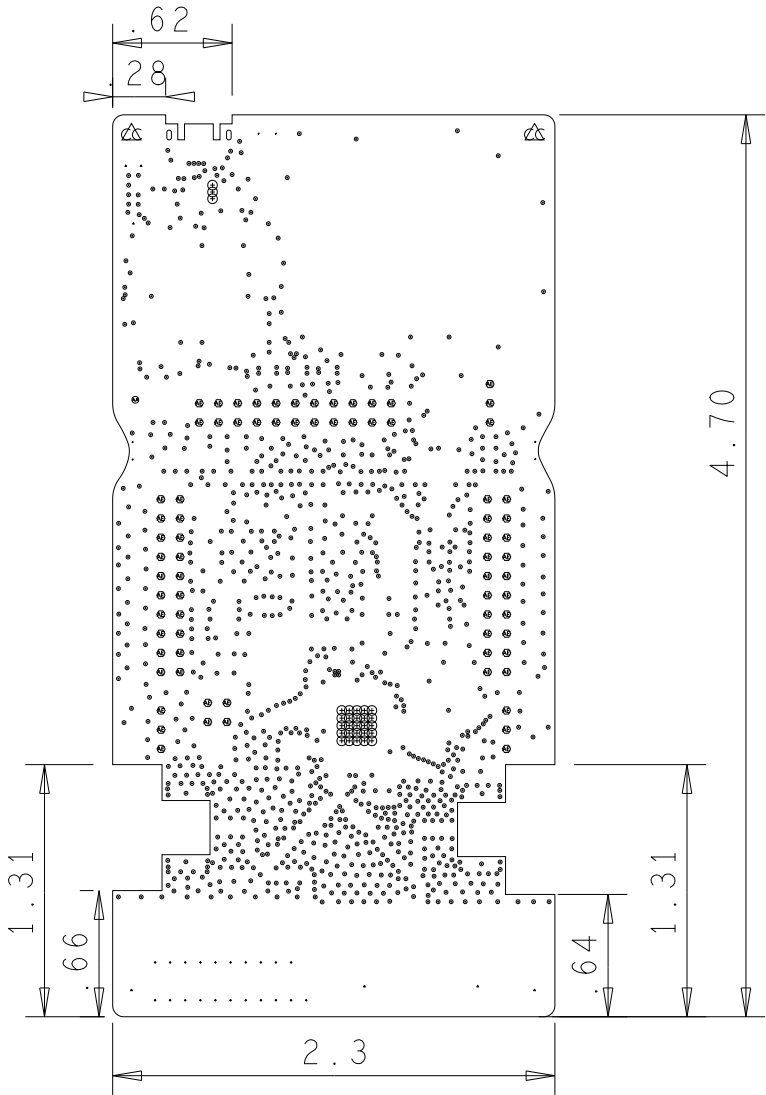


* SURFACE - AIR 0 MIL
L1: TOP CONDUCTOR - COPPER 1.4 MIL
* DIELECTRIC - FR-4 6.9 MIL
L2: L2 PLANE - COPPER 1.4 MIL

* DIELECTRIC - FR-4 43.7 MIL

L3: L3 CONDUCTOR - COPPER 1.4 MIL
* DIELECTRIC - FR-4 6.9 MIL
L4: BOTTOM CONDUCTOR - COPPER 1.4 MIL
* SURFACE - AIR 0 MIL

DESIGN CROSS SECTION CHART
TOTAL THICKNESS 63.1 MIL



DRILL CHART: TOP to BOTTOM			
ALL UNITS ARE IN MILS			
FIGURE	SIZE	PLATED	QTY
.	8.0	PLATED	1023
⊙	8.0	PLATED	28
.	10.0	PLATED	8
.	16.0	PLATED	21
•	41.0	PLATED	75
•	43.0	PLATED	1
⚡	126.0	PLATED	2
.	35.0	NON-PLATED	6
.	39.0	NON-PLATED	3
.	126.0	NON-PLATED	4
◻	51.0x24.0	PLATED	2

CUSTOMER: TEXAS INSTRUMENTS			
BOARD NAME: LAUNCHXL-CC1350-4		LAYER NAME: Fabrication Drawing	
PROJECT NO: WCS034	BOARD REV: A	RELEASE DATE: 2017-01-23	SHEET NO: 1 OF 1