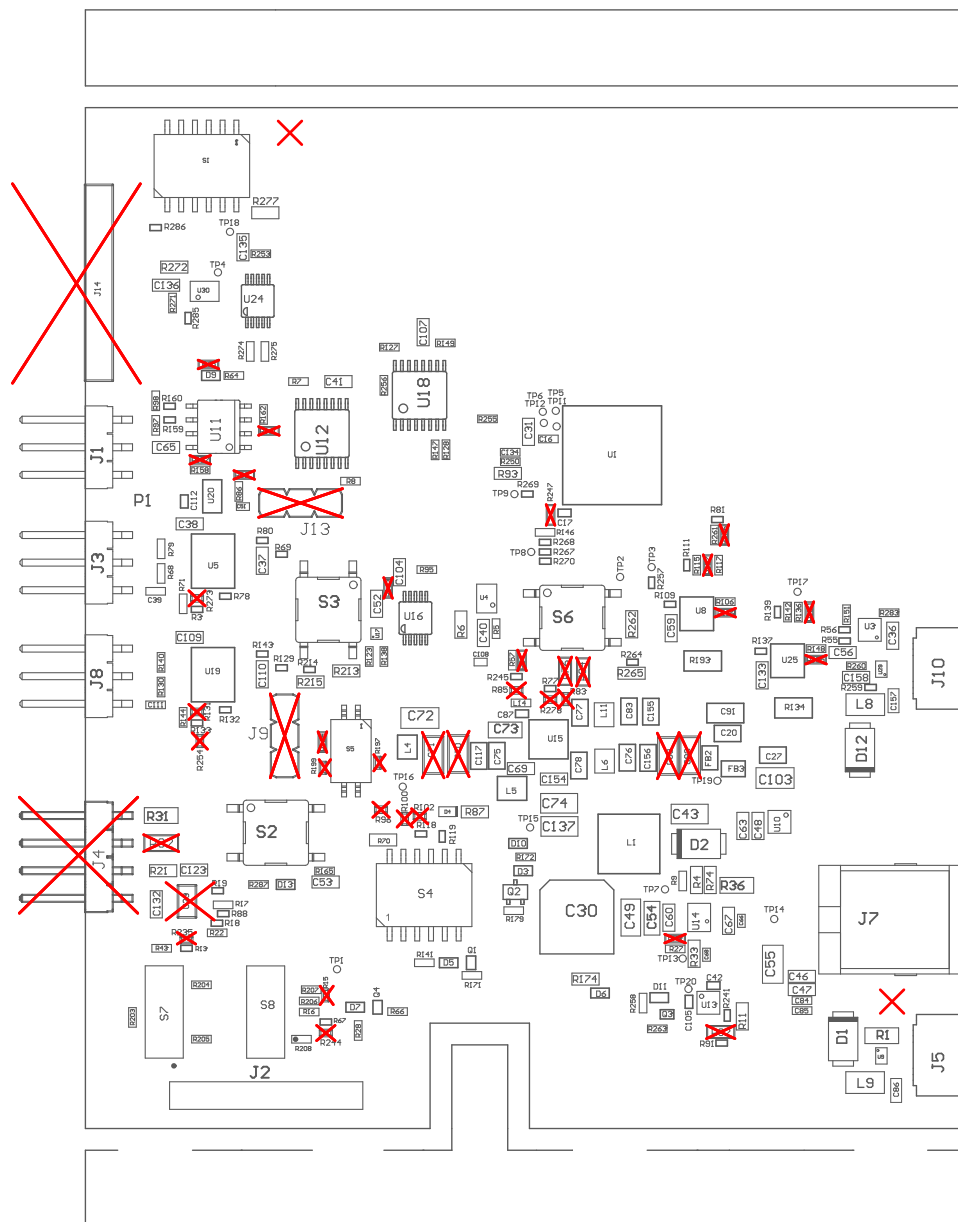


Z21 ■ Install label in silkscreened box after final wash. Text shall be 8 pt font. Text shall be per the Label Table in the PDF schematic.  
Z22 ■ These assemblies are ESD sensitive, ESD precautions shall be observed.  
Z23 ■ These assemblies must be clean and free from flux and all contaminants. Use of no clean flux is not acceptable.  
Z24 ■ These assemblies must comply with workmanship standards IPC-A-610 Class 2, unless otherwise specified.  
Z25 ■ INDICATION FOR COMPONENTS D\* ARE GIVEN AT THEIR CATHODE SIDE.

COMPONENTS MARKED 'DNP' SHOULD NOT BE POPULATED.

ASSEMBLY VARIANT: 02\_IWR



PCB VIEWED FROM TOP SIDE	BOARD #: PROC182	REV: A	SUN REV: Not in version control
Assembly Layer Top	TID #: N/A		
PLOT NAME = Top Assembly Drawing	GENERATED : 25-11-2024 16:11:18	TEXAS INSTRUMENTS	

