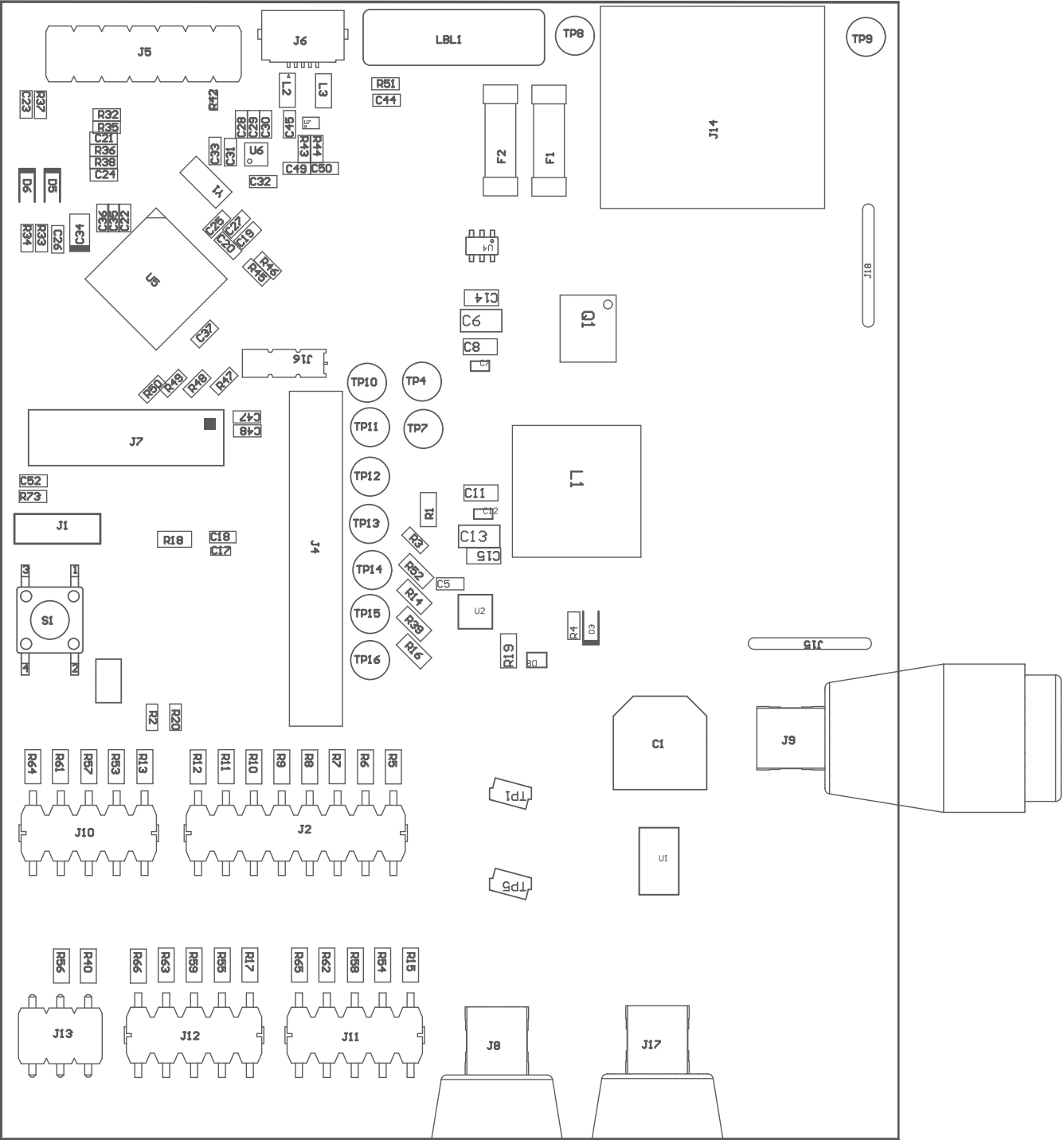


ZZ1 ■ Install label in silkscreened box after final wash. Text shall be 8 pt font. Text shall be per the Label Table in the PDF schematic.

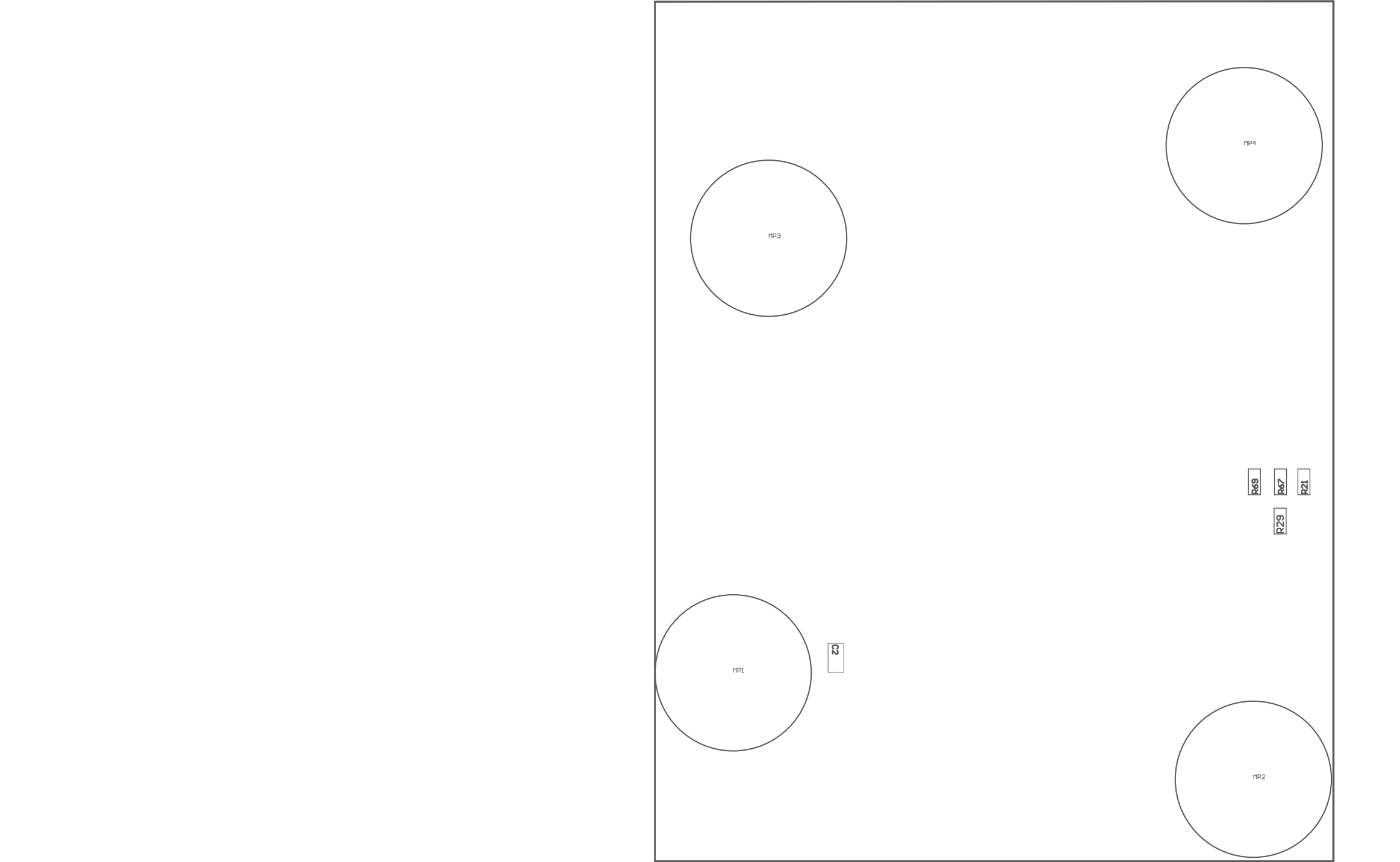
ZZ2 ■ These assemblies are ESD sensitive, ESD precautions shall be observed.

ZZ3 ■ These assemblies must be clean and free from flux and all contaminants. Use of no clean flux is not acceptable.

ZZ4 ■ These assemblies must comply with workmanship standards IPC-A-610 Class 2, unless otherwise specified.



PCB VIEWED FROM TOP SIDE		BOARD #:	MD093	REV:	E1	SUN REV:	Not in version control
		TID #:	N/A				
PLOT NAME = Top Assembly Drawing		GENERATED	10/1/2024	12:22:44 AM	TEXAS INSTRUMENTS		



COMPONENTS MARKED 'DNP' SHOULD NOT BE POPULATED.

ASSEMBLY VARIANT: 002

PCB VIEWED FROM BOTTOM SIDE	BOARD #: MD093	REV: E1	SUN REV: Not in version control
	TID #: N/A		
PLOT NAME = Bottom Assembly Drawing	GENERATED : 10/1/2024 12:22:44 AM		TEXAS INSTRUMENTS