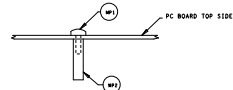


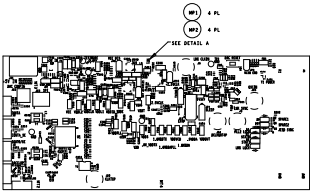
REVISIONS				
ZONE	LTR	DESCRIPTION	DATE	APPROVED

THIS DRAWING IS INTENDED TO HELP IN THE ASSEMBLY OF THE DESIGN.

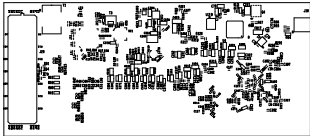
1. REFER TO ODB++ FILE FOR SPECIFIC COMPONENT LOCATION INFORMATION.
2. USE WATER SOLUBLE FLUX DURING BOARD ASSEMBLY.
RHS COMPLIANT AND LEAD FREE.
3. MARK BOARD'S SILKSCREEN AND ESD BAG WITH THE APPROPRIATE EVM PART NUMBER.
4. IPC-A-610 / ACCEPTABILITY OF ELECTRONIC ASSEMBLIES, CLASS 2, CURRENT REVISION.
5. SEE HEATSINK SPEC DRAWING FOR INSTALLATION REFERENCE.



DETAIL A (SIDE VIEW) - NO SCALE
INSTALL SPACERS (YY) AND SCREWS (XX) AS SHOWN.



TOP VIEW



BOTTOM VIEW

UNLESS OTHERWISE SPECIFIED DIMENSIONS ARE IN INCHES TOLERANCES ARE: FRACTIONS DECIMALS ANGLES +/- .XX +/- .01 +/- +/- .XXX +/- .005 +/-	CONTRACT NO.		TEXAS INSTRUMENTS INC.	
	APPROVALS		DATE	
	DRAWN L. NGUYEN		03-23-17	
	ENGR E. DRUBENS		03-23-17	
MATERIAL	SEE NOTE 5		ASSEMBLY DRAWING DAC38RF8xEVM	
FINISH	SEE NOTES 7, 8, 9		SIZE B	CODE IDENT NO. DRAWING NO.
DO NOT SCALE DRAWING		SCALE NONE		REV. F
		SHEET 1 OF 1		