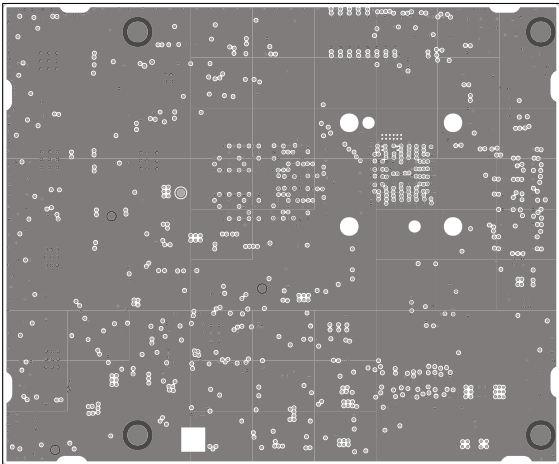


ASSEMBLY TOP

ART FILM - L1\_TOP\_501\_1\_03450\_B1.art

ART FILM - L2\_GND\_1\_501\_1\_03450\_B1.art

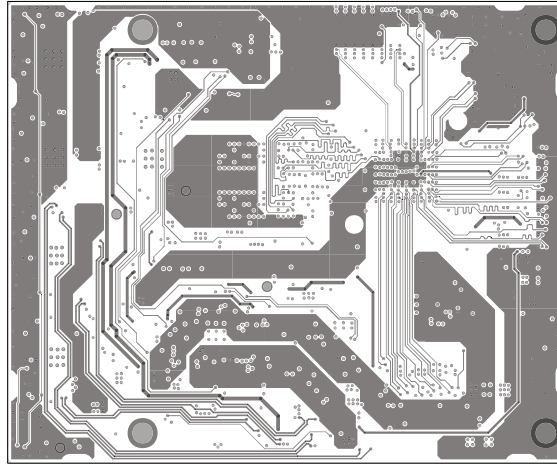


+

DESIGNED FOR: i.MX93 SOM		LAYER: L2_GND1
PART NO :501-1-03450	REV-B1	TOLERANCE +/- 0.1mm
PART NAME : i.MX93 SOM		

ART FILM - L2\_GND\_1\_501\_1\_03450\_B1.art

ART FILM - L3\_IN\_1\_501\_1\_03450\_B1.art

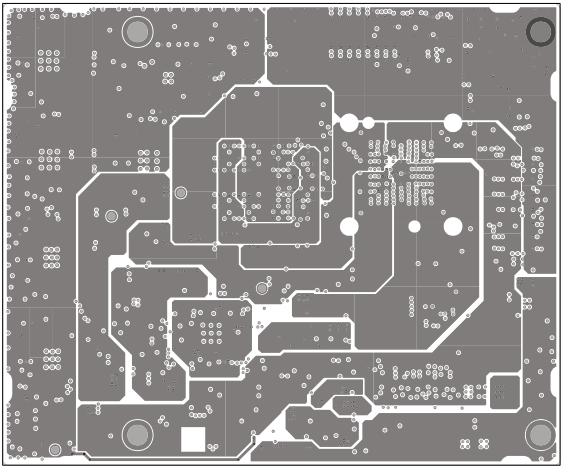


+

DESIGNED FOR: i.MX93 SOM		LAYER: L3_SIG
PART NO :501-1-03450	REV-B1	TOLERANCE +/- 0.1mm
PART NAME : i.MX93 SOM		

ART FILM - L3\_IN\_1\_501\_1\_03450\_B1.art

ART FIIM - L4\_PWR\_501\_1\_03450\_B1.a:t

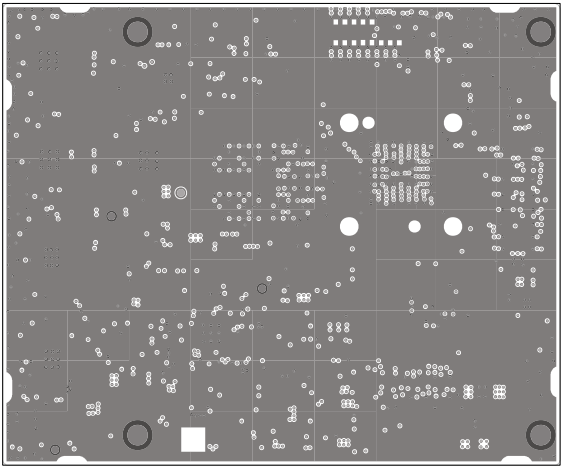


+

DESIGNED FOR: i.MX93 SOM		LAYER: L4_PWR
PART NO :501-1-03450	REV-B1	TOLERANCE +/- 0.1mm
PART NAME : i.MX93 SOM		

ART FIIM - L4\_PWR\_501\_1\_03450\_B1.a:t

ART FILM - L5\_GND\_2\_501\_1\_03450\_B1.art

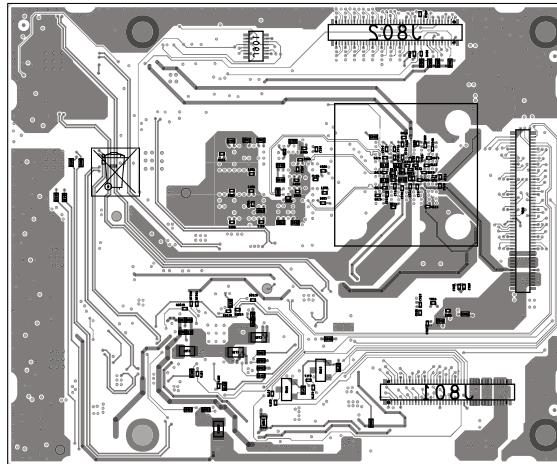


+

DESIGNED FOR: i.MX93 SOM		LAYER: L5_GND_2
PART NO : 501-1-03450	REV-B1	TOLERANCE +/- 0.1mm
PART NAME : i.MX93 SOM		

ART FILM - L5\_GND\_2\_501\_1\_03450\_B1.art

ART FILM - L6\_BOTTOM\_501\_1\_03450\_B1.art



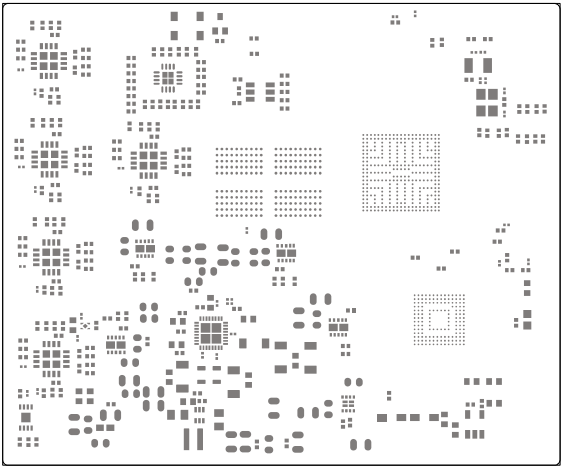
+

MOTTOB YJ8M322A

DESIGNED FOR: i.MX93 SOM		LAYER: BOTTOM
PART NO :501-1-03450	REV-B1	TOLERANCE +/- 0.1mm
PART NAME : i.MX93 SOM		

ART FILM - L6\_BOTTOM\_501\_1\_03450\_B1.art

ART FILM - PMT\_501\_1\_03450\_B1

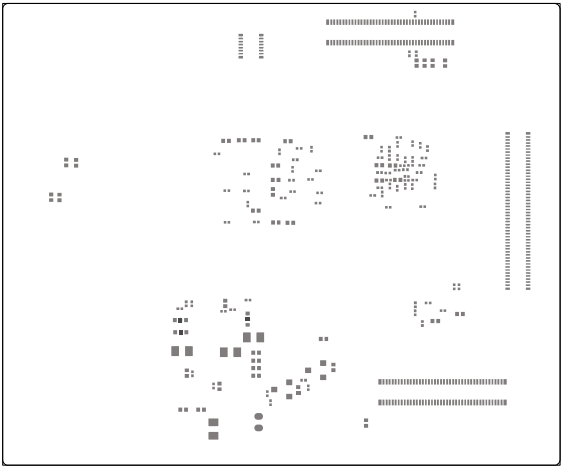


+

DESIGNED FOR: i.MX93 SOM		LAYER:
PART NO :501-1-03450	REV-B1	TOLERANCE +/- 0.1mm
PART NAME : i.MX93 SOM		

ART FILM - PMT\_501\_1\_03450\_B1

ART FILM - PMB\_501\_1\_03450\_B1

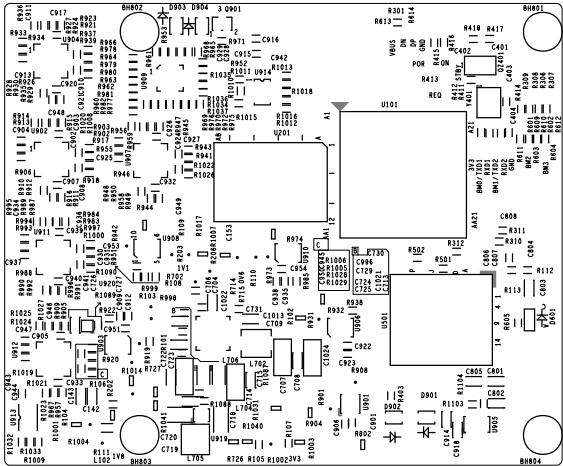


+

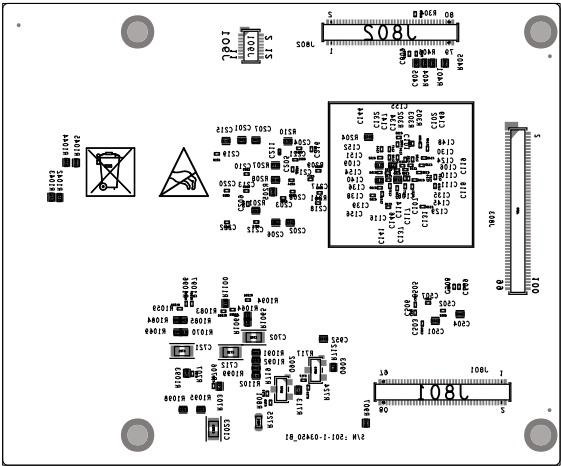
DESIGNED FOR: i.MX93 SOM		LAYER:
PART NO :501-1-03450	REV-B1	TOLERANCE +/- 0.1mm
PART NAME : i.MX93 SOM		

ART FILM - PMB\_501\_1\_03450\_B1





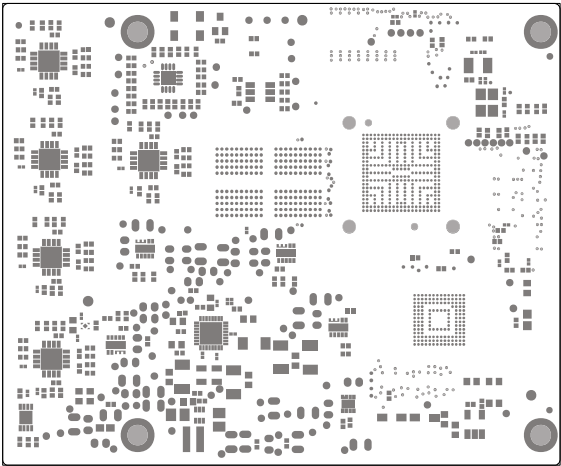
DESIGNED FOR: i.MX93 SOM		LAYER:TOP SILK
PART NO :501-1-03450	REV-B1	TOLERANCE +/- 0.1mm
PART NAME : i.MX93 SOM		



ASSEMBLY BOTTOM

DESIGNED FOR: i.MX93 SOM		LAYER:BOTTOM SILK
PART NO :501-1-03450	REV-B1	TOLERANCE +/- 0.1mm
PART NAME : i.MX93 SOM		

ART FILM - SMT\_501\_1\_03450\_B1

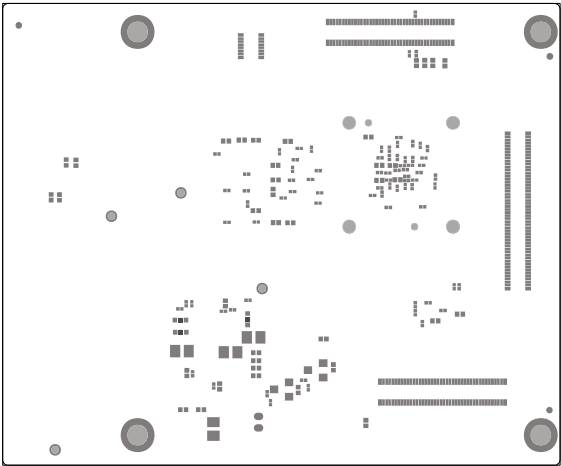


+

DESIGNED FOR: i.MX93 SOM		LAYER:TOP SOLDER
PART NO :501-1-03450	REV-B1	TOLERANCE +/- 0.1mm
PART NAME : i.MX93 SOM		

ART FILM - SMT\_501\_1\_03450\_B1

ART FILM - SMB\_501\_1\_03450\_B1



+

DESIGNED FOR: i.MX93 SOM		LAYER:BOTTOM SOLDER
PART NO :501-1-03450	REV-B1	TOLERANCE +/- 0.1mm
PART NAME : i.MX93 SOM		

ART FILM - SMB\_501\_1\_03450\_B1

## IMPORTANT NOTICE AND DISCLAIMER

TI PROVIDES TECHNICAL AND RELIABILITY DATA (INCLUDING DATA SHEETS), DESIGN RESOURCES (INCLUDING REFERENCE DESIGNS), APPLICATION OR OTHER DESIGN ADVICE, WEB TOOLS, SAFETY INFORMATION, AND OTHER RESOURCES "AS IS" AND WITH ALL FAULTS, AND DISCLAIMS ALL WARRANTIES, EXPRESS AND IMPLIED, INCLUDING WITHOUT LIMITATION ANY IMPLIED WARRANTIES OF MERCHANTABILITY, FITNESS FOR A PARTICULAR PURPOSE OR NON-INFRINGEMENT OF THIRD PARTY INTELLECTUAL PROPERTY RIGHTS.

These resources are intended for skilled developers designing with TI products. You are solely responsible for (1) selecting the appropriate TI products for your application, (2) designing, validating and testing your application, and (3) ensuring your application meets applicable standards, and any other safety, security, regulatory or other requirements.

These resources are subject to change without notice. TI grants you permission to use these resources only for development of an application that uses the TI products described in the resource. Other reproduction and display of these resources is prohibited. No license is granted to any other TI intellectual property right or to any third party intellectual property right. TI disclaims responsibility for, and you will fully indemnify TI and its representatives against, any claims, damages, costs, losses, and liabilities arising out of your use of these resources.

TI's products are provided subject to [TI's Terms of Sale](#) or other applicable terms available either on [ti.com](#) or provided in conjunction with such TI products. TI's provision of these resources does not expand or otherwise alter TI's applicable warranties or warranty disclaimers for TI products.

TI objects to and rejects any additional or different terms you may have proposed.

Mailing Address: Texas Instruments, Post Office Box 655303, Dallas, Texas 75265

Copyright © 2025, Texas Instruments Incorporated

## IMPORTANT NOTICE AND DISCLAIMER

TI PROVIDES TECHNICAL AND RELIABILITY DATA (INCLUDING DATA SHEETS), DESIGN RESOURCES (INCLUDING REFERENCE DESIGNS), APPLICATION OR OTHER DESIGN ADVICE, WEB TOOLS, SAFETY INFORMATION, AND OTHER RESOURCES "AS IS" AND WITH ALL FAULTS, AND DISCLAIMS ALL WARRANTIES, EXPRESS AND IMPLIED, INCLUDING WITHOUT LIMITATION ANY IMPLIED WARRANTIES OF MERCHANTABILITY, FITNESS FOR A PARTICULAR PURPOSE OR NON-INFRINGEMENT OF THIRD PARTY INTELLECTUAL PROPERTY RIGHTS.

These resources are intended for skilled developers designing with TI products. You are solely responsible for (1) selecting the appropriate TI products for your application, (2) designing, validating and testing your application, and (3) ensuring your application meets applicable standards, and any other safety, security, regulatory or other requirements.

These resources are subject to change without notice. TI grants you permission to use these resources only for development of an application that uses the TI products described in the resource. Other reproduction and display of these resources is prohibited. No license is granted to any other TI intellectual property right or to any third party intellectual property right. TI disclaims responsibility for, and you will fully indemnify TI and its representatives against, any claims, damages, costs, losses, and liabilities arising out of your use of these resources.

TI's products are provided subject to [TI's Terms of Sale](#) or other applicable terms available either on [ti.com](https://www.ti.com) or provided in conjunction with such TI products. TI's provision of these resources does not expand or otherwise alter TI's applicable warranties or warranty disclaimers for TI products.

TI objects to and rejects any additional or different terms you may have proposed.

Mailing Address: Texas Instruments, Post Office Box 655303, Dallas, Texas 75265  
Copyright © 2025, Texas Instruments Incorporated