

EVM User's Guide: TUSB1044AEVM

TUSB1044A Evaluation Module



Description

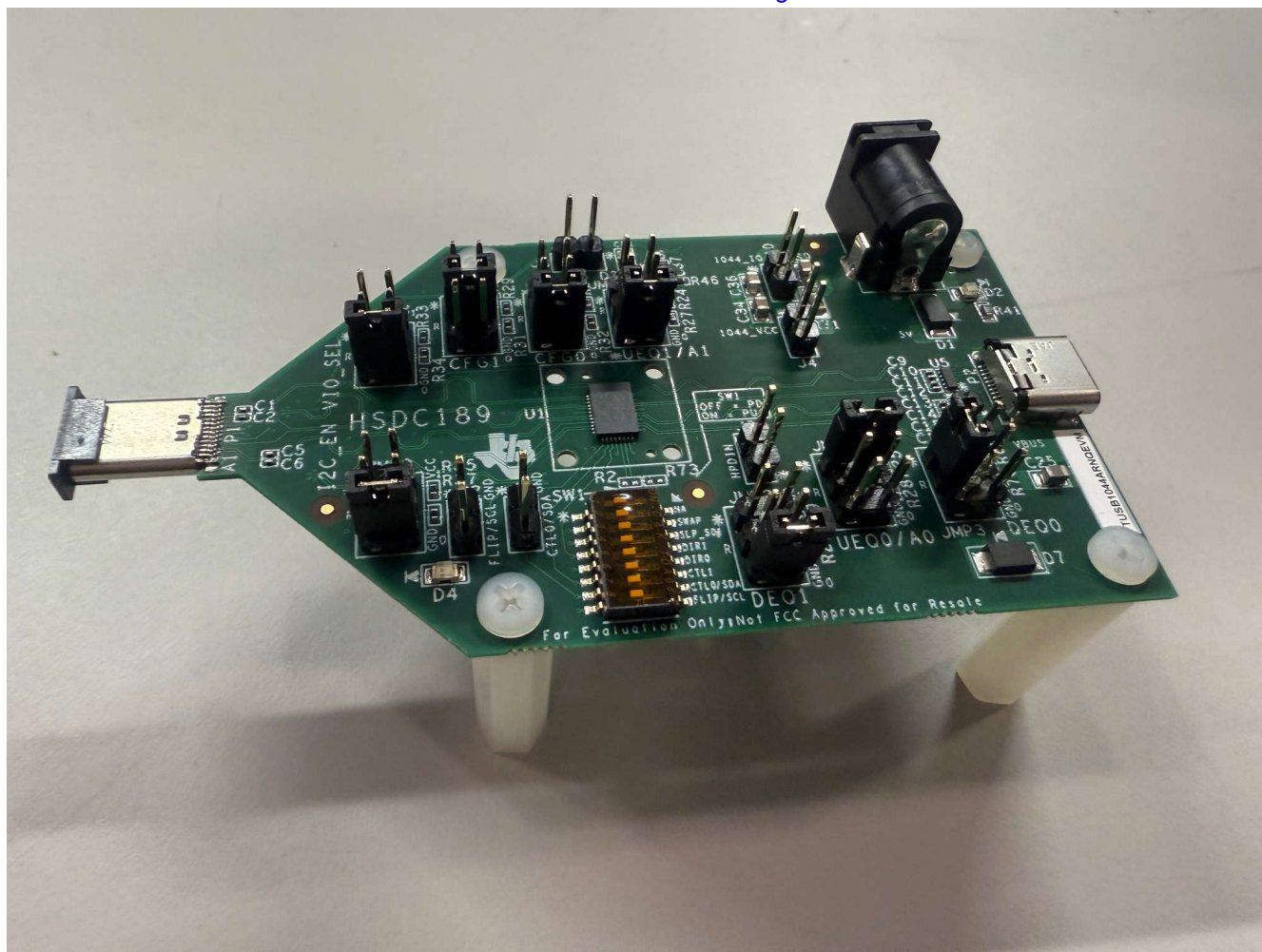
The TUSB1044A is a USB Type-C® Alt Mode redriver switch that supports data rates up to 10Gbps. This protocol-agnostic linear redriver can support USB Type-C® Alt Mode interfaces including DisplayPort™. The TUSB1044A also supports USB 3.2 data rates up to 20Gbps when operating in USB3.2 x2 mode.

Features

- Plug and play
- Operates in DisplayPort™ sink mode
- External power through 5V DC IN is required
- Used with legacy USB or USB Type-C® systems for evaluation purpose

Applications

- [Tablets](#)
- [Notebooks](#)
- [Desktops](#)
- [Docking stations](#)



1 Evaluation Module Overview

1.1 Introduction

The TUSB1044A is a VESA® DisplayPort™ Alt Mode over USB Type-C® redriving switch that supports data rates up to 10Gbps for a downstream facing port (host) or upstream facing port (device). This guide describes how to bring up the EVM and includes schematics that can be used as reference for the cable implementations with the TUSB1044A device. This EVM is intended to demonstrate the SuperSpeed and SuperSpeed+ USB3.2 x2 functionality of the TUSB1044A.

1.2 Kit Contents

The TUSB1044A EVM includes:

- The TUSB1044A Device
- A USB-C® plug that connects to a USB/DisplayPort™ Alt Mode capable host
- A USB-C® receptacle that connects to a USB/DisplayPort™ Alt Mode capable device
- Standard 5V barrel jack receptacle
- Headers for configuring various TUSB1044A features

2 Hardware

2.1 TUSB1044AEVM

Figure 2-1 illustrates the *TUSB1044A Active Cable* EVM.

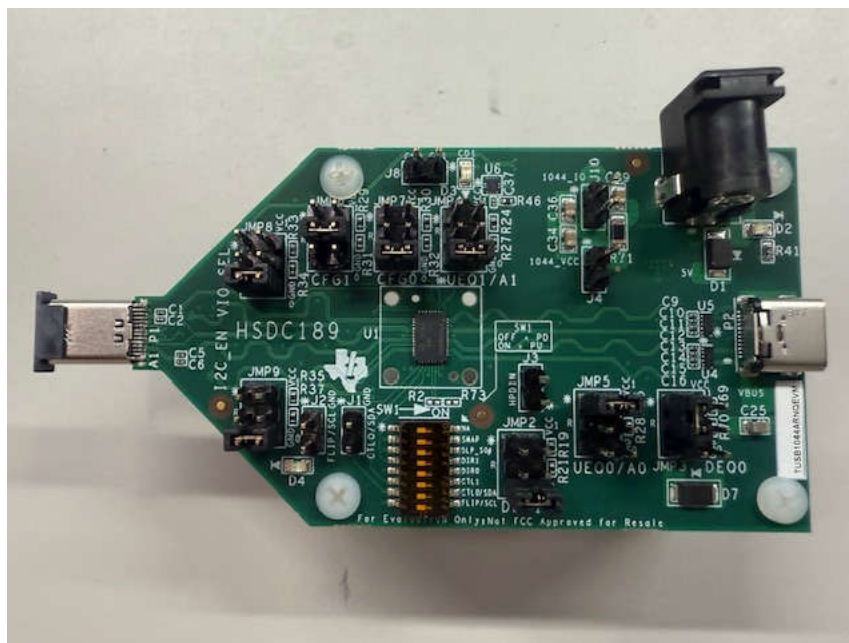


Figure 2-1. TUSB1044A EVM Image

The TUSB1044AEVM can be used with a DFP or UFP USB Type-C source or device to evaluate the USB Type-C implementation. Figure 2-2 is a typical test set-up.

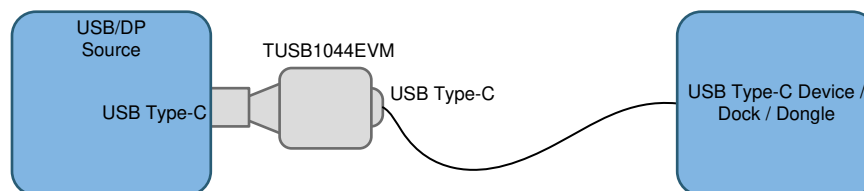


Figure 2-2. TUSB1044A System Example

2.2 TUSB1044AEVM Configuration

This section provides the configuration options available in the TUSB1044AEVM.

2.2.1 TUSB1044A EVM Default Jumper and Switch Configuration

The following headers are provided for TUSB1044A configuration by default. Configuration settings must be optimized depending on the amount of loss of each channel in the system.

Table 2-1. TUSB1044A Configuration Pins

Reference Designator	JMP Control	Configuration
J1	CTL0/SDA	No Connect
J2	FLIP/SCL	No Connect
J3	HPDIN	No Connect
J4	VCC Isolate	No Connect
J8	CD1	No Connect
J10	1044_IO	No Connect
JMP2	DEQ1	SHUNT on pin 5-6 (GND)
JMP3	DEQ0	floating
JMP4	UEQ1/A1	SHUNT on pin 5-6 (GND)
JMP5	UEQ0/A0	SHUNT on pin 1-2 (VCC)
JMP6	CFG1	SHUNT on pin 3-4 (20K PD)
JMP7	CFG0	SHUNT on pin 5-6 (GND)
JMP8	VIO_SEL	SHUNT on pin 5-6 (GND)
JMP9	I2C_EN	SHUNT on pin 5-6 (GND)

Table 2-2. Switch Configuration

SW1 Position	Control Signal	Configuration
1	NA	NA
2	SWAP	OFF
3	SLP_S0#	ON
4	DIR1	OFF
5	DIR0	OFF
6	CTL1	OFF
7	CTL0/SDA	ON
8	FLIP/SCL	OFF

2.2.2 TUSB1044A EQ Control

Each of the TUSB1044A receiver lanes has individual controls for receiver equalization. [Table 2-3](#) through [Table 2-5](#) detail the gain values for each available combination for downstream, upstream, and all DisplayPort configurations.

Table 2-3. Config Pin-Level Definitions

Level	Settings
0	Option 1: Tie 1kΩ, 5% to GND Option 2: Tie directly to GND
R	Tie 20kΩ, 5% to GND
F	Float (leave pin open)
1	Option 1: Tie 1kΩ, 5% to VCC Option 2: Tie directly to VCC

Table 2-4. USB 3.1 EQ Settings

USB 3.1 Downstream Facing Ports			USB 3.1 Upstream Facing Ports		
DEQ1 Pin Level	DEQ0 Pin Level	EQ Gain at 5GHz (dB)	UEQ1 Pin Level	UEQ0 Pin Level	EQ Gain at 5GHz (dB)
0	0	0	0	0	0
0	R	1	0	R	1
0	F	2	0	F	2
0	1	3	0	1	3
R	0	4	R	0	4
R	R	5	R	R	5
R	F	6	R	F	6
R	1	7	R	1	7
F	0	8	F	0	8
F	R	9	F	R	9
F	F	10	F	F	10
F	1	11	F	1	11
1	0	12	1	0	12
1	R	13	1	R	13
1	F	14	1	F	14
1	1	15	1	1	15

Table 2-5. VOD Linear Range and DC Gain

VOD Linear Range and DC Gain						
Setting	CFG1 Pin Level	CFG0 Pin Level	DS DC Gain (dB)	US DC Gain (dB)	DS VOD (mVpp)	US VOD (mVpp)
1	0	0	+1	0	900	900
2	0	R	0	+1	900	900
3	0	F	0	0	900	900
4	0	1	+1	+1	900	900
5	R	0	0	0	1100	1100
6	R	R	+1	0	1100	1100
7	R	F	0	+1	1100	1100
8	R	1	+2	+2	1100	1100
9	F	0	−1	−1	1300	1300
10	F	R	+2.5	+2.5	1300	1300
11	F	F	0	0	1300	1300
12	F	1	+1	+1	1300	1300
13	1	0	−1	0	1300	1300
14	1	R	0	−1	1300	1300
15	1	F	0	+1	1300	1300
16	1	1	+1	0	1300	1300

2.2.3 Power

The EVM must be powered through an external 5V source through J5.

2.2.4 USB3.2 x2 Configuration

The TUSB1044A configured for USB 3.2 x2 mode determines if the link is operating in USB 3.2 x2 or in USB 3.2 x1. The port functioning as a USB 3.2 x1 port is called the config lane. The determination of the config lane is based solely on the Type-C orientation. For normal orientation (FLIP = L), Port 1 is the config lane. For the flipped orientation (FLIP = H), Port 2 is the config lane.

In GPIO mode the TUSB1044A is enabled for USB3.2 x2 mode when all the following conditions are true: DIR1 pin = H, DIR0 pin = L or H, CTL0 pin = H and CTL1 pin = H. FLIP pin = L or H.

In I²C mode, USB3.2 x2 mode is disabled by default. USB3.2x2 in I²C mode is enabled if either of the following conditions is true:

- At offset 0xA, USB32_BY2_EN bit = 1'b1 and CTLSEL_1:0 bits = 2'b01.
- At offset 0xA, CTLSEL_1:0 bits = 2'b11, and at offset 0xC, DIR_SEL bits = 2'b10 or 2'b11.

3.1 TUSB1044AEVM Schematics

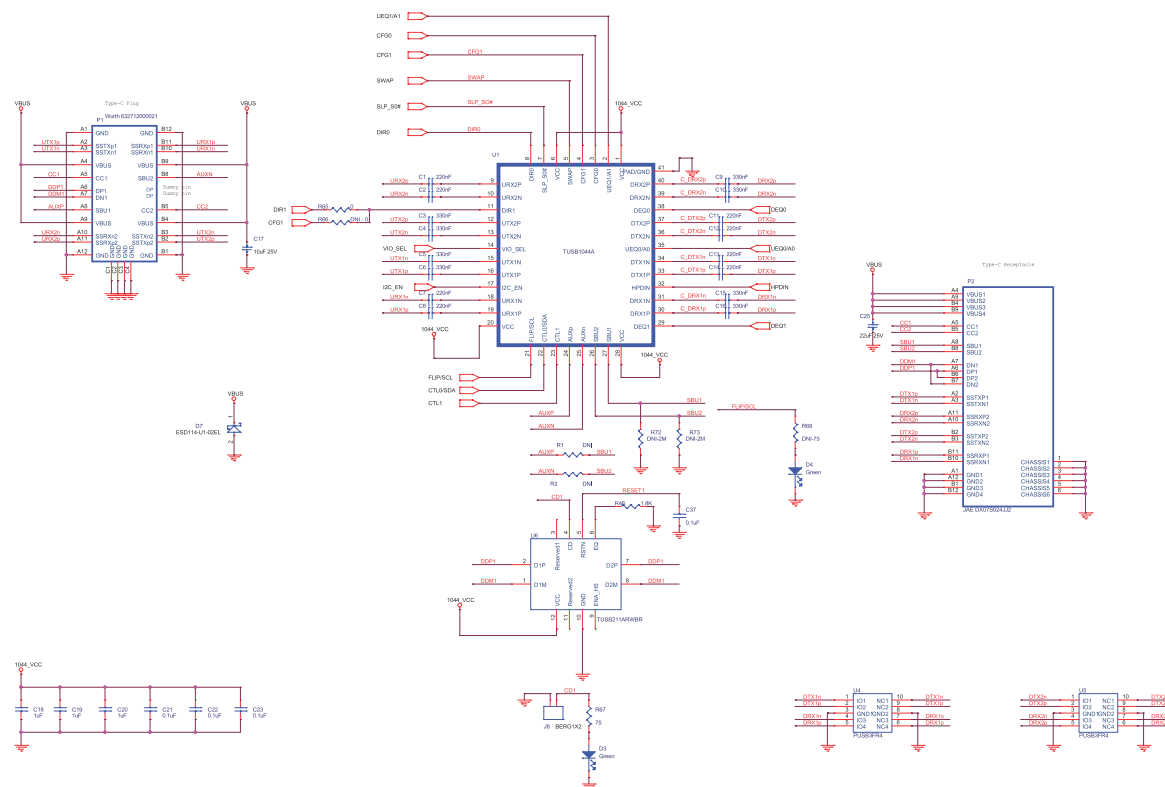
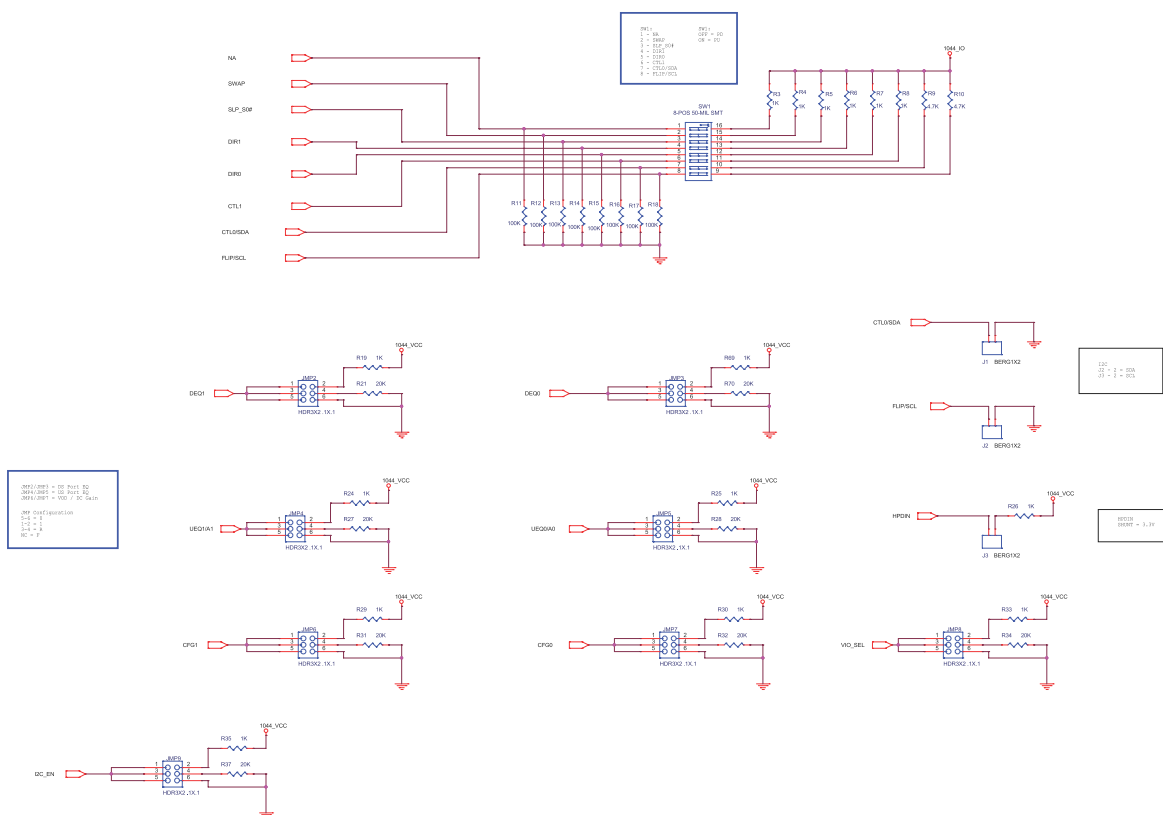


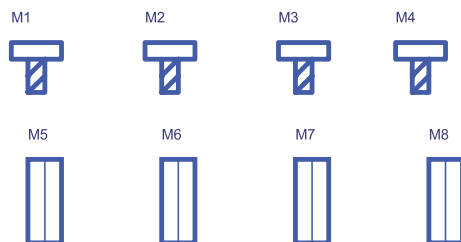
Figure 3-1. TUSB1044A EVM Schematic (Page 1)



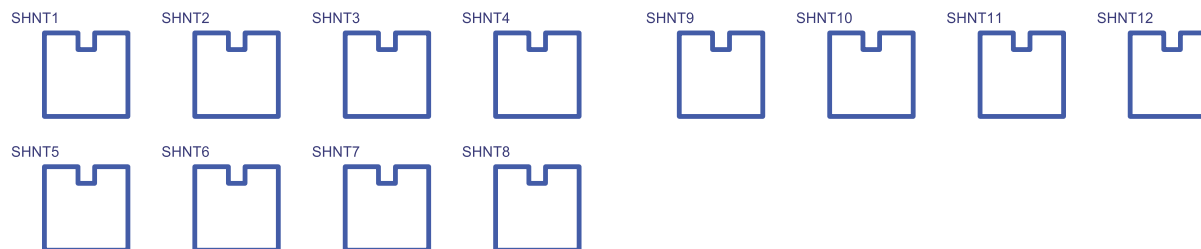
Mounting Holes (4 places)



PWB Standoffs (4 places)



SHUNTS



PCB LOGO
Texas Instruments

PCB LOGO
ESD1

PCB LOGO
FCC Disclaimer

PCB LOGO
CE Logo

PCB LOGO
WEEE Logo

LB1



PCB1



HSDC189

Assembly Notes

1. Install Label in silkscreened box after final wash. Text shall be 8 pt font. Text shall be per label table in the PDF schematic.

Variant/Label Table	
Variant	Label Text
001	TUSB1044ARNQEVN

2. To install 4-pin T jumpers, using the part in the BOM, and cut pin 4, and install it on the left side of pin 2.

3. To install 5-pin T jumpers, using the part in the BOM, cut pin 4 and 5, and install them on left and right side of pin 2.

FIDUCIALS

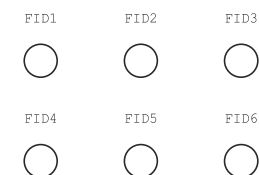


Figure 3-4. TUSB1044A EVM Schematic (Page 4)

3.2 Layout

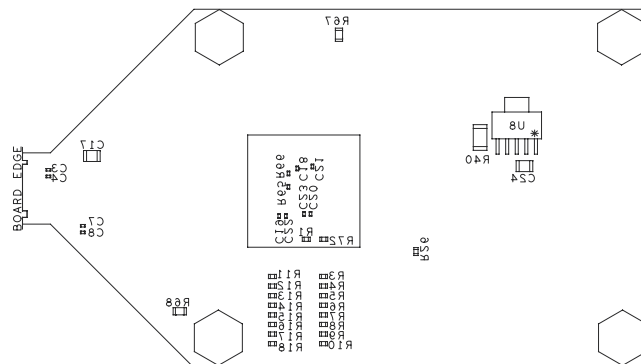


Figure 3-5. Bottom Assembly

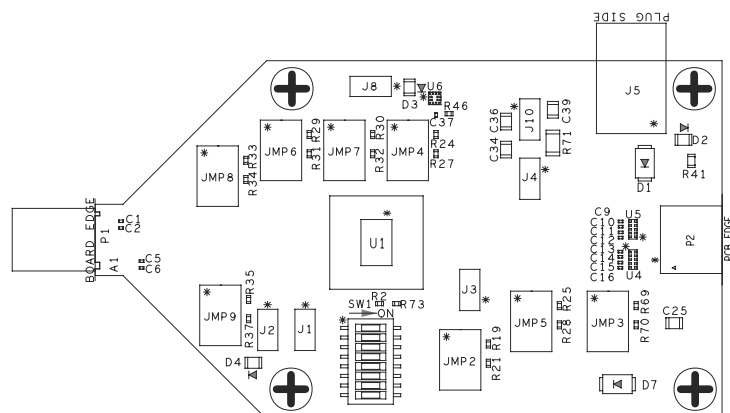


Figure 3-6. Top Assembly

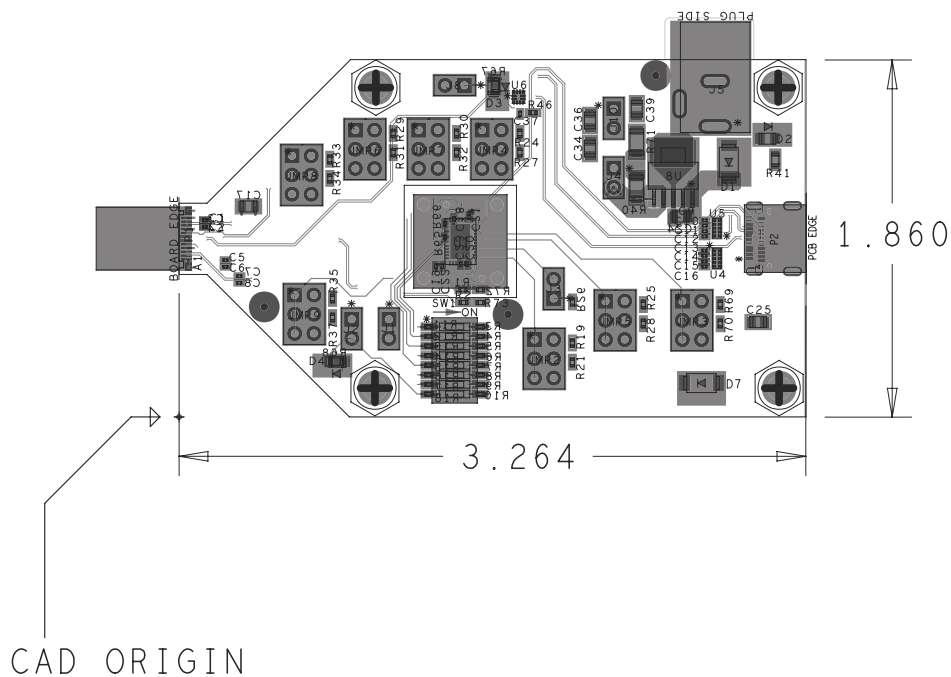


Figure 3-7. Top and Bottom Assembly

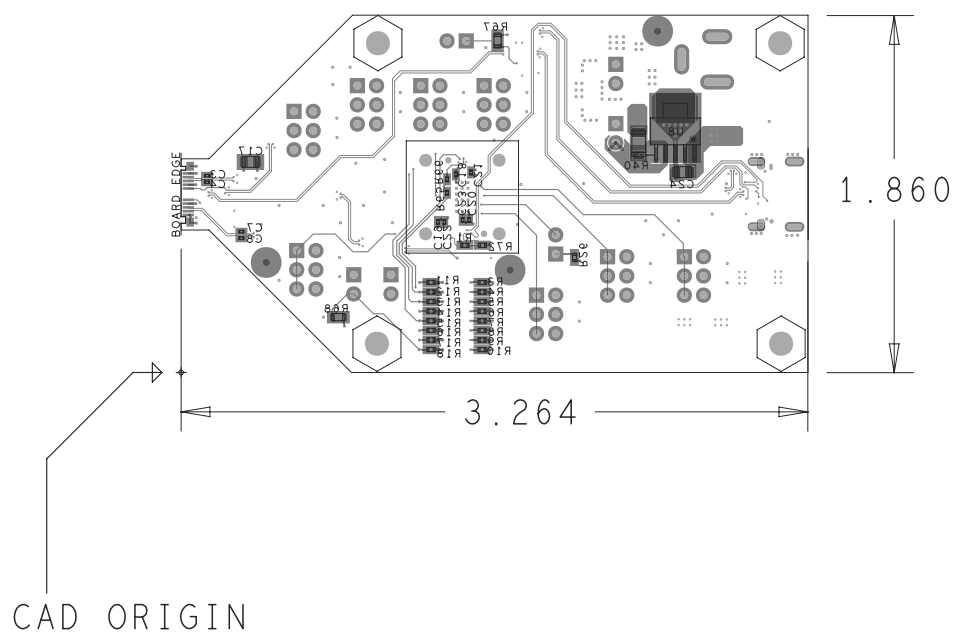


Figure 3-8. Bottom Layer

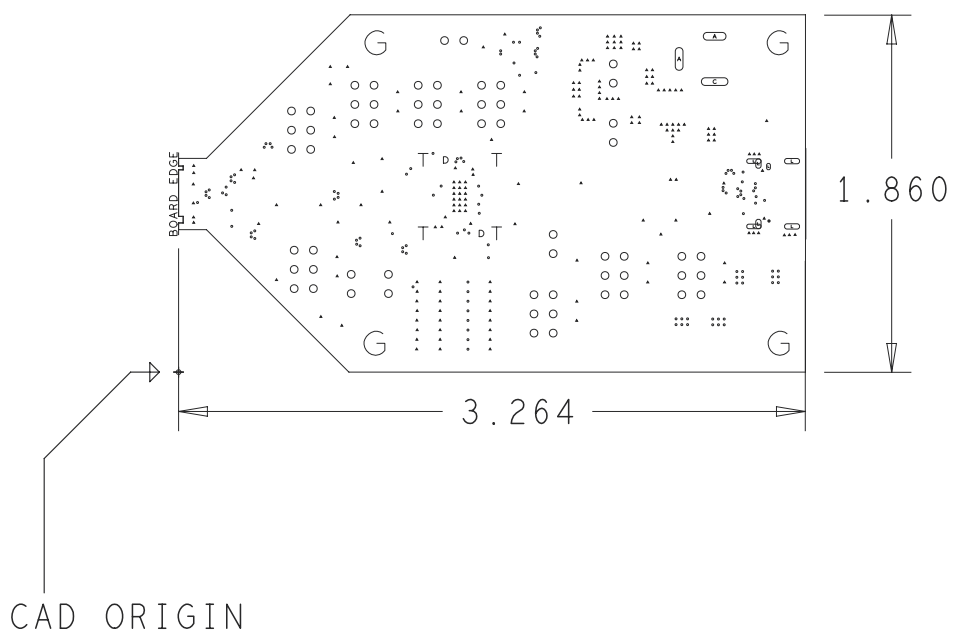
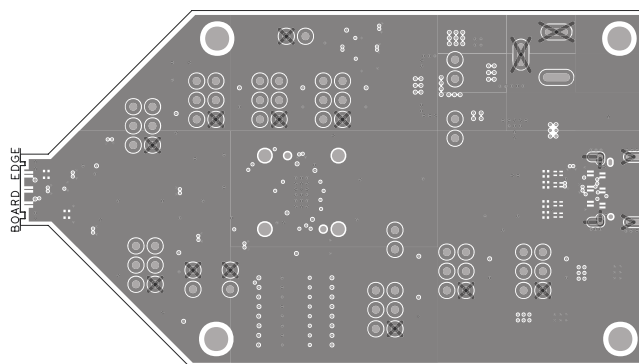
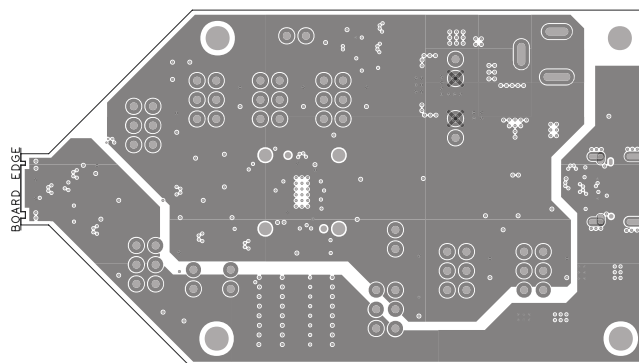
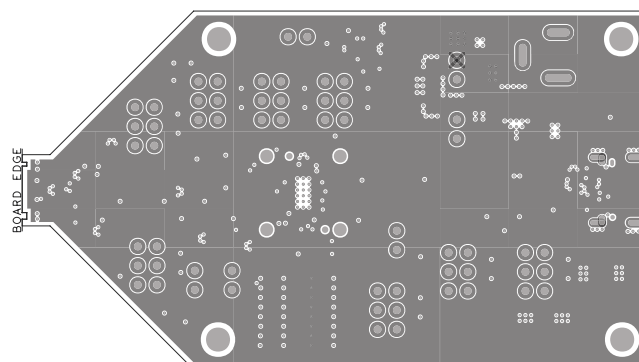
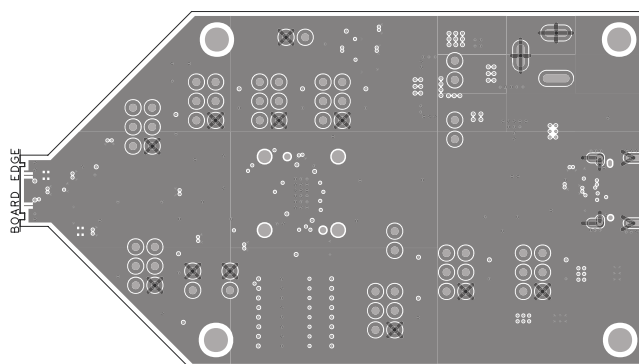


Figure 3-9. Fabrication Drawing

**Figure 3-10. Layer 2: GND Plane****Figure 3-11. Layer 3: PWR Plane****Figure 3-12. Layer 4: PWR Plane****Figure 3-13. Layer 5: PWR Plane**

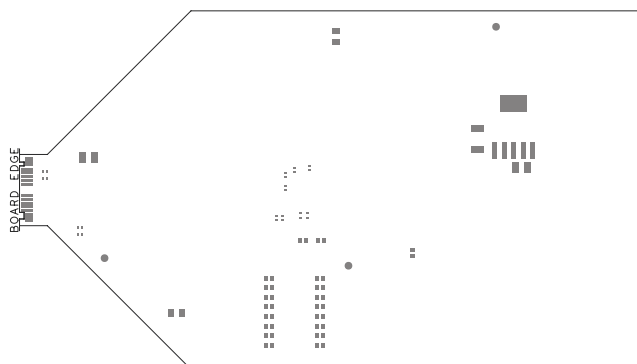


Figure 3-14. Pastemask Bottom Layer

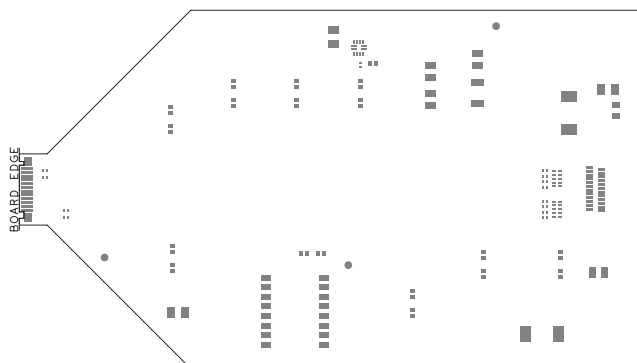


Figure 3-15. Pastemask Top Layer

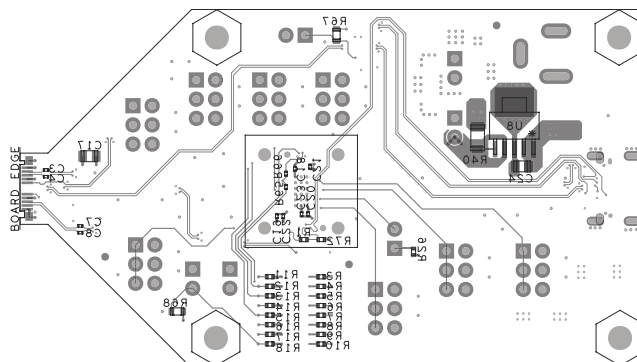
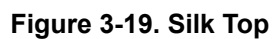
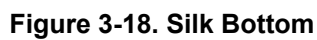


Figure 3-16. PCB Assembly Bottom Side



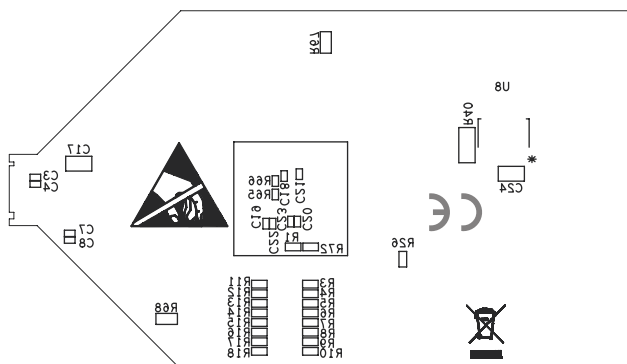


Figure 3-20. Silkscreen Bottom

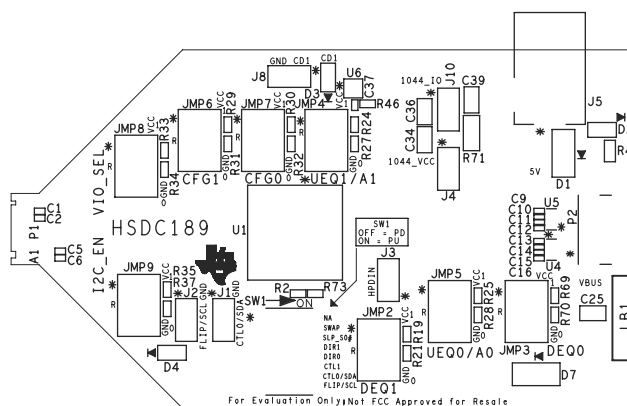


Figure 3-21. Silkscreen Top

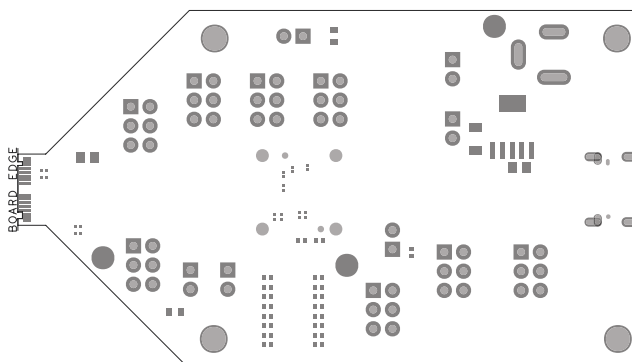


Figure 3-22. Soldermask Bottom

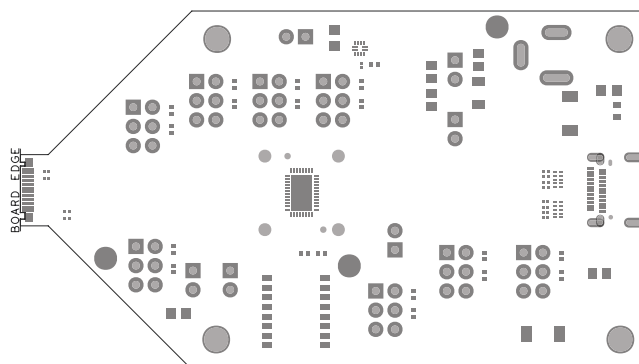


Figure 3-23. Soldermask

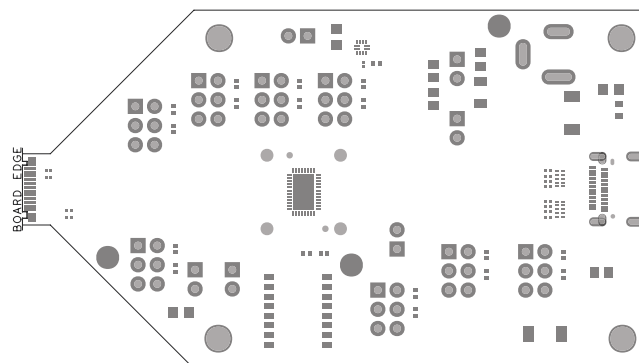


Figure 3-24. Soldermask Top

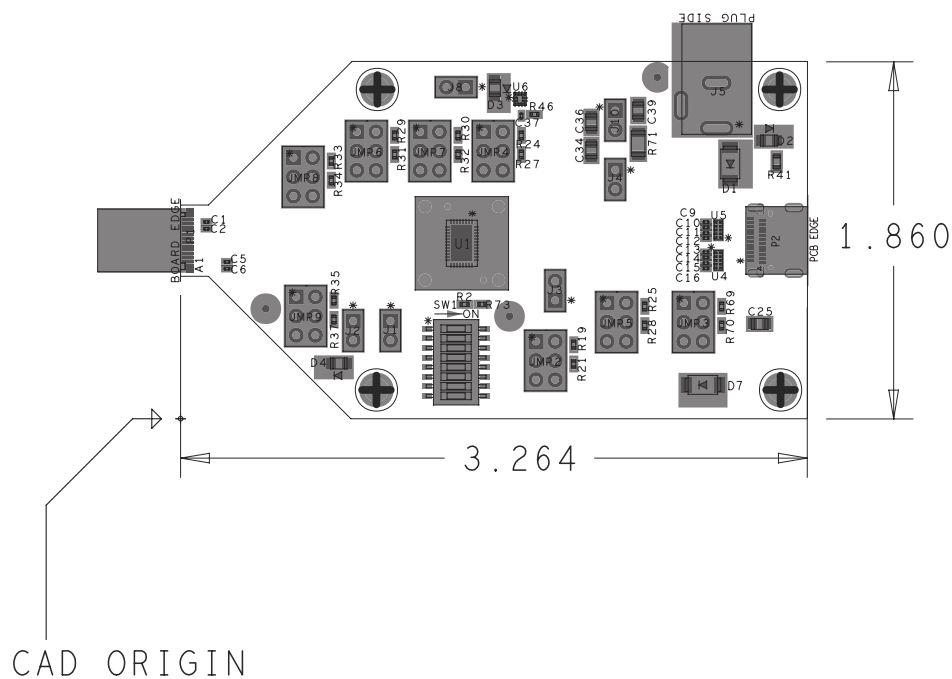


Figure 3-25. Top Layer

3.3 Bill of Materials

Table 3-1 lists the TUSB1044EVM bill of materials (BOM).

Table 3-1. TUSB1044A Bill of Materials

Item	QTY	Reference	Part	Footprints	Manufacturer	Manufacturer Part No	Description
1	8	C1,C2,C7,C8,C11,C12,C13,C14	220nF	c0201	TDK Corporation	C0603X5R1A224K	CAP CER 0.22UF 10V X5R 0201
2	8	C3,C4,C5,C6,C9,C10,C15,C16	330nF	c0201	TDK Corporation	C0603X5R1A334K	CAP CER 330nF 10V X5R 0201
3	1	C17	10uF	c0805	Samsung	CL21B106KOQNNNE	CAP CER 10UF 16V X7R 0805
4	3	C18,C19,C20	1uF	c0201	Murata Electronics North America	GRM033R60J105MEA2D	CAP CER 1UF 6.3V X5R 0201
5	4	C21,C22,C23,C37	0.1uF	c0201	Murata Electronics North America	GRM033R61A104ME15D	CAP CER 0.1UF 10V X5R 0201
6	1	C24	22uF	c0201	Taiyo Yuden	JMK212BJ226KG-T	CAP CER 0.1UF 10V X5R 0201
7	1	C25	22uF	c0805	Samsung	CL21A226MAYNNNE	CAP CER 22UF 6.3V X5R 0805
8	1	34	10UF	c0805	Samsung	CL21B106KOQNNNE	CAP CER 10UF 6.3V X5R 0805
9	2	C36,C39	1uF	c0805	Samsung	CL21B105KOFNNNE	CAP CER 22UF 6.3V X5R 0805
10	2	D1.D7	SCHOTTKY		NXP	PMEG3050EP,115	DIODE SCHOTTKY 30V 5A SOD128
11	3	D2,D3,D4	Green	led0805	Lite-On Inc	LTST-C170KGKT	LED GREEN CLEAR 0805 SMD
12	8	JMP2,JMP3,JMP4,JMP5,JMP6,JMP7,JMP8,JMP9	HDR3X2 .1X.1	berg2x3tee	3M	961103-6404-AR	HDR_THVT_2X3_254_871
13	6	J1,J2,J3,J4,J8,J10	CON02	HDR_THVT_1x2_100_M	Samtec Inc	HTSW-102-07-G-S	2 Positions Header Connector Through Hole
14	1	J5	DC_PWR_JACK	pj-202ah	CUI	PJ-202AH	CONN PWR JACK 2X5.5MM KINKED PIN
15	1	LB1	Label	Rectangle	3M	THT-14-423-10	PCB Label 0.650"H x 0.200"W
16	4	M1,M2,M3,M4	NY PMS 440 005 PH	Screw	B&F Fastener	NY PMS 440 0050 PH	40x.5 inch nylon
17	4	M5,M6,M7,M8	1902E	Standoff	Keystone	1902E	Standoff
18	1	PCB1	HSDC189		Any		
19	1	P1	Würth 632712000021	usb-c_smrt_632_712_000_b6_b7	Würth Electronics Inc	632712000021	CONN PLUG USB TYPE C SMD

Table 3-1. TUSB1044A Bill of Materials (continued)

Item	QTY	Reference	Part	Footprints	Manufacturer	Manufacturer Part No	Description
20	1	P2	JAE DX07S024JJ2	USB-C_SMRT_DX07S024JJ2	JAE Electronics	DX07S024JJ2R1300	CONN RCPT USB3.1 TYPEC SMD R/A
21	2	R1,R2	DNI - 0 Ohm	r0402	Yageo	RC0402JR-070RL	RES SMD 0.0OHM JUMPER 1/16W 0402
22	13	R3,R4,R5,R6,R7,R8,R19,R24,R25,R26,R29,R30,R35	1K	r0402	Vishay Dale	CRCW04021K00FKED	RES SMD 1K OHM 1% 1/16W 0402
23	8	R11,R12,R13,R14,R15,R16,R17,R18	4.7K	r0402	Panasonic Electronic Components	ERJ-2RKF4701X	RES SMD 4.7K OHM 1% 1/16W 0402
24	8	R21,R27,R28,R31,R32,R34,R37,R70	100K	r0402	Yageo	RC0402FR-07100KL	RES SMD 100K OHM 1% 1/5W 0402
25	2	R9,R10	20K	r0402	Vishay Dale	CRCW040220L0FKED	RES SMD 20K OHM 1% 1/10W 0402
26	1	R33	1K	r0402	Panasonic Electronic Components	ERJ-2GEJ102X	RES SMD 1K OHM 1% 1/10W 0402
27	2	R40,R71	0 Ohm	r1206	Vishay Dale	CRCW12060000Z0EA	RES SMD 0.0 OHM JUMPER 1/4W 1206
28	1	R41	330 Ohm	r1206	Yageo	RC0603FR-07330RL	RES SMD 330 OHM 1% 1/10W 0603
29	1	R46	1.8k Ohm	r0603	Panasonic Electronic Components	ERJ-2RKF1801X	RES SMD 1.8kHM JUMPER 1/10W 0402
30	1	R65	0 Ohm	r0402	Panasonic Electronic Components	ERJ-1GN0R00C	RES SMD 0.0OHM JUMPER 1/10W 0402
31	1	R66	DNI - 0 Ohm	r0402	Panasonic Electronic Components	ERJ-1GN0R00C	RES SMD 0.0OHM JUMPER 1/10W 0402
32	1	R67	75 Ohm	r0402	Yageo	RC0603JR-0775RL	RES SMD 75 OHM JUMPER 1/10W 0402
33	1	R68	DNI-75 Ohm	r0402	Yageo	RC0603JR-0775RL	RES SMD 75 OHM 1% 1/10W 0402
34	1	R69	1K	r0402	Vishay Dale	CRCW04021K00FKED	RES SMD 1K OHM 1% 1/10W 0402
35	2	R72,R73	DNI-2M	r0402	Panasonic Electronic Components	ERJ-2GEJ205X	RES SMD 2M OHM 1% 1/10W 0402
36	12	SHNT1,SHNT2,SHNT3,SHNT4,SHNT5,SHNT6,SHNT7,SHNT8,SHNT9,SHNT10,SHNT11,SHNT12	QPC02SXGN-RC	0.1	Sullins Connector Solutions	QPC02SXGN-RC	CONN JUMPER SHORTING .100" GOLD
37	1	SW1	8-POS 50-MIL SMT	SW_SMVT_SPST_TDA08	C&K Components	TDA08H0SB1	SWITCH SLIDE DIP SPST 25MA 24V

Table 3-1. TUSB1044A Bill of Materials (continued)

Item	QTY	Reference	Part	Footprints	Manufacturer	Manufacturer Part No	Description
38	1	U1	TUSB1044A	40 pin QFN	Texas Instruments	TUSB1044ARNQ	USB Type-C DP ALT Mode, 10Gbps Linear Redriver Crosspoint Switch
39	2	U4,U5	PUSB3FR4	dqa0010a	Texas Instruments	TPD4E02B04DQAR	4-Channel ESD Protection Diode for USB Type-C and HDMI 2.0
40	1	U6	TUSB211A	rgy_s-pvqfn-n14	Texas Instruments	TUSB211A	USB 2.0 High Speed Signal Conditioner
41	1	U8	TPS7A4533	dsg	Texas Instruments	TPS62082DSGT	1.2A High Efficient Step Down Converter in 2x2mm SON Package. 3.3 Vout (Min)

4 Additional Information

4.1 Trademarks

DisplayPort™ is a trademark of VESA.

USB Type-C® and USB-C® are registered trademarks of USB Implementers Forum.

VESA® is a registered trademark of Video Electronics Standards Association.

All trademarks are the property of their respective owners.

STANDARD TERMS FOR EVALUATION MODULES

1. *Delivery:* TI delivers TI evaluation boards, kits, or modules, including any accompanying demonstration software, components, and/or documentation which may be provided together or separately (collectively, an "EVM" or "EVMs") to the User ("User") in accordance with the terms set forth herein. User's acceptance of the EVM is expressly subject to the following terms.
 - 1.1 EVMs are intended solely for product or software developers for use in a research and development setting to facilitate feasibility evaluation, experimentation, or scientific analysis of TI semiconductors products. EVMs have no direct function and are not finished products. EVMs shall not be directly or indirectly assembled as a part or subassembly in any finished product. For clarification, any software or software tools provided with the EVM ("Software") shall not be subject to the terms and conditions set forth herein but rather shall be subject to the applicable terms that accompany such Software
 - 1.2 EVMs are not intended for consumer or household use. EVMs may not be sold, sublicensed, leased, rented, loaned, assigned, or otherwise distributed for commercial purposes by Users, in whole or in part, or used in any finished product or production system.
2. *Limited Warranty and Related Remedies/Disclaimers:*
 - 2.1 These terms do not apply to Software. The warranty, if any, for Software is covered in the applicable Software License Agreement.
 - 2.2 TI warrants that the TI EVM will conform to TI's published specifications for ninety (90) days after the date TI delivers such EVM to User. Notwithstanding the foregoing, TI shall not be liable for a nonconforming EVM if (a) the nonconformity was caused by neglect, misuse or mistreatment by an entity other than TI, including improper installation or testing, or for any EVMs that have been altered or modified in any way by an entity other than TI, (b) the nonconformity resulted from User's design, specifications or instructions for such EVMs or improper system design, or (c) User has not paid on time. Testing and other quality control techniques are used to the extent TI deems necessary. TI does not test all parameters of each EVM. User's claims against TI under this Section 2 are void if User fails to notify TI of any apparent defects in the EVMs within ten (10) business days after delivery, or of any hidden defects with ten (10) business days after the defect has been detected.
 - 2.3 TI's sole liability shall be at its option to repair or replace EVMs that fail to conform to the warranty set forth above, or credit User's account for such EVM. TI's liability under this warranty shall be limited to EVMs that are returned during the warranty period to the address designated by TI and that are determined by TI not to conform to such warranty. If TI elects to repair or replace such EVM, TI shall have a reasonable time to repair such EVM or provide replacements. Repaired EVMs shall be warranted for the remainder of the original warranty period. Replaced EVMs shall be warranted for a new full ninety (90) day warranty period.

WARNING

Evaluation Kits are intended solely for use by technically qualified, professional electronics experts who are familiar with the dangers and application risks associated with handling electrical mechanical components, systems, and subsystems.

User shall operate the Evaluation Kit within TI's recommended guidelines and any applicable legal or environmental requirements as well as reasonable and customary safeguards. Failure to set up and/or operate the Evaluation Kit within TI's recommended guidelines may result in personal injury or death or property damage. Proper set up entails following TI's instructions for electrical ratings of interface circuits such as input, output and electrical loads.

NOTE:

EXPOSURE TO ELECTROSTATIC DISCHARGE (ESD) MAY CAUSE DEGRADATION OR FAILURE OF THE EVALUATION KIT; TI RECOMMENDS STORAGE OF THE EVALUATION KIT IN A PROTECTIVE ESD BAG.

3 Regulatory Notices:

3.1 United States

3.1.1 Notice applicable to EVMs not FCC-Approved:

FCC NOTICE: This kit is designed to allow product developers to evaluate electronic components, circuitry, or software associated with the kit to determine whether to incorporate such items in a finished product and software developers to write software applications for use with the end product. This kit is not a finished product and when assembled may not be resold or otherwise marketed unless all required FCC equipment authorizations are first obtained. Operation is subject to the condition that this product not cause harmful interference to licensed radio stations and that this product accept harmful interference. Unless the assembled kit is designed to operate under part 15, part 18 or part 95 of this chapter, the operator of the kit must operate under the authority of an FCC license holder or must secure an experimental authorization under part 5 of this chapter.

3.1.2 For EVMs annotated as FCC – FEDERAL COMMUNICATIONS COMMISSION Part 15 Compliant:

CAUTION

This device complies with part 15 of the FCC Rules. Operation is subject to the following two conditions: (1) This device may not cause harmful interference, and (2) this device must accept any interference received, including interference that may cause undesired operation.

Changes or modifications not expressly approved by the party responsible for compliance could void the user's authority to operate the equipment.

FCC Interference Statement for Class A EVM devices

NOTE: This equipment has been tested and found to comply with the limits for a Class A digital device, pursuant to part 15 of the FCC Rules. These limits are designed to provide reasonable protection against harmful interference when the equipment is operated in a commercial environment. This equipment generates, uses, and can radiate radio frequency energy and, if not installed and used in accordance with the instruction manual, may cause harmful interference to radio communications. Operation of this equipment in a residential area is likely to cause harmful interference in which case the user will be required to correct the interference at his own expense.

FCC Interference Statement for Class B EVM devices

NOTE: This equipment has been tested and found to comply with the limits for a Class B digital device, pursuant to part 15 of the FCC Rules. These limits are designed to provide reasonable protection against harmful interference in a residential installation. This equipment generates, uses and can radiate radio frequency energy and, if not installed and used in accordance with the instructions, may cause harmful interference to radio communications. However, there is no guarantee that interference will not occur in a particular installation. If this equipment does cause harmful interference to radio or television reception, which can be determined by turning the equipment off and on, the user is encouraged to try to correct the interference by one or more of the following measures:

- *Reorient or relocate the receiving antenna.*
- *Increase the separation between the equipment and receiver.*
- *Connect the equipment into an outlet on a circuit different from that to which the receiver is connected.*
- *Consult the dealer or an experienced radio/TV technician for help.*

3.2 Canada

3.2.1 For EVMs issued with an Industry Canada Certificate of Conformance to RSS-210 or RSS-247

Concerning EVMs Including Radio Transmitters:

This device complies with Industry Canada license-exempt RSSs. Operation is subject to the following two conditions:

(1) this device may not cause interference, and (2) this device must accept any interference, including interference that may cause undesired operation of the device.

Concernant les EVMs avec appareils radio:

Le présent appareil est conforme aux CNR d'Industrie Canada applicables aux appareils radio exempts de licence. L'exploitation est autorisée aux deux conditions suivantes: (1) l'appareil ne doit pas produire de brouillage, et (2) l'utilisateur de l'appareil doit accepter tout brouillage radioélectrique subi, même si le brouillage est susceptible d'en compromettre le fonctionnement.

Concerning EVMs Including Detachable Antennas:

Under Industry Canada regulations, this radio transmitter may only operate using an antenna of a type and maximum (or lesser) gain approved for the transmitter by Industry Canada. To reduce potential radio interference to other users, the antenna type and its gain should be so chosen that the equivalent isotropically radiated power (e.i.r.p.) is not more than that necessary for successful communication. This radio transmitter has been approved by Industry Canada to operate with the antenna types listed in the user guide with the maximum permissible gain and required antenna impedance for each antenna type indicated. Antenna types not included in this list, having a gain greater than the maximum gain indicated for that type, are strictly prohibited for use with this device.

Concernant les EVMs avec antennes détachables

Conformément à la réglementation d'Industrie Canada, le présent émetteur radio peut fonctionner avec une antenne d'un type et d'un gain maximal (ou inférieur) approuvé pour l'émetteur par Industrie Canada. Dans le but de réduire les risques de brouillage radioélectrique à l'intention des autres utilisateurs, il faut choisir le type d'antenne et son gain de sorte que la puissance isotrope rayonnée équivalente (p.i.r.e.) ne dépasse pas l'intensité nécessaire à l'établissement d'une communication satisfaisante. Le présent émetteur radio a été approuvé par Industrie Canada pour fonctionner avec les types d'antenne énumérés dans le manuel d'usage et ayant un gain admissible maximal et l'impédance requise pour chaque type d'antenne. Les types d'antenne non inclus dans cette liste, ou dont le gain est supérieur au gain maximal indiqué, sont strictement interdits pour l'exploitation de l'émetteur.

3.3 Japan

3.3.1 *Notice for EVMs delivered in Japan:* Please see http://www.tij.co.jp/sds/ti_ja/general/eStore/notice_01.page 日本国内に輸入される評価用キット、ボードについては、次のところをご覧ください。

<https://www.ti.com/ja-jp/legal/notice-for-evaluation-kits-delivered-in-japan.html>

3.3.2 *Notice for Users of EVMs Considered "Radio Frequency Products" in Japan:* EVMs entering Japan may not be certified by TI as conforming to Technical Regulations of Radio Law of Japan.

If User uses EVMs in Japan, not certified to Technical Regulations of Radio Law of Japan, User is required to follow the instructions set forth by Radio Law of Japan, which includes, but is not limited to, the instructions below with respect to EVMs (which for the avoidance of doubt are stated strictly for convenience and should be verified by User):

1. Use EVMs in a shielded room or any other test facility as defined in the notification #173 issued by Ministry of Internal Affairs and Communications on March 28, 2006, based on Sub-section 1.1 of Article 6 of the Ministry's Rule for Enforcement of Radio Law of Japan,
2. Use EVMs only after User obtains the license of Test Radio Station as provided in Radio Law of Japan with respect to EVMs, or
3. Use of EVMs only after User obtains the Technical Regulations Conformity Certification as provided in Radio Law of Japan with respect to EVMs. Also, do not transfer EVMs, unless User gives the same notice above to the transferee. Please note that if User does not follow the instructions above, User will be subject to penalties of Radio Law of Japan.

【無線電波を送信する製品の開発キットをお使いになる際の注意事項】 開発キットの中には技術基準適合証明を受けていないものがあります。技術適合証明を受けていないもののご使用に際しては、電波法遵守のため、以下のいずれかの措置を取っていただく必要がありますのでご注意ください。

1. 電波法施行規則第6条第1項第1号に基づく平成18年3月28日総務省告示第173号で定められた電波暗室等の試験設備でご使用いただく。
2. 実験局の免許を取得後ご使用いただく。
3. 技術基準適合証明を取得後ご使用いただく。

なお、本製品は、上記の「ご使用にあたっての注意」を譲渡先、移転先に通知しない限り、譲渡、移転できないものとします。

上記を遵守頂けない場合は、電波法の罰則が適用される可能性があることをご留意ください。 日本テキサス・インスツルメンツ株式会社
東京都新宿区西新宿 6 丁目 2 4 番 1 号
西新宿三井ビル

3.3.3 *Notice for EVMs for Power Line Communication:* Please see http://www.tij.co.jp/sds/ti_ja/general/eStore/notice_02.page

電力線搬送波通信についての開発キットをお使いになる際の注意事項については、次のところをご覧ください。<https://www.ti.com/ja-jp/legal/notice-for-evaluation-kits-for-power-line-communication.html>

3.4 European Union

3.4.1 *For EVMs subject to EU Directive 2014/30/EU (Electromagnetic Compatibility Directive):*

This is a class A product intended for use in environments other than domestic environments that are connected to a low-voltage power-supply network that supplies buildings used for domestic purposes. In a domestic environment this product may cause radio interference in which case the user may be required to take adequate measures.

4 *EVM Use Restrictions and Warnings:*

4.1 EVMS ARE NOT FOR USE IN FUNCTIONAL SAFETY AND/OR SAFETY CRITICAL EVALUATIONS, INCLUDING BUT NOT LIMITED TO EVALUATIONS OF LIFE SUPPORT APPLICATIONS.

4.2 User must read and apply the user guide and other available documentation provided by TI regarding the EVM prior to handling or using the EVM, including without limitation any warning or restriction notices. The notices contain important safety information related to, for example, temperatures and voltages.

4.3 *Safety-Related Warnings and Restrictions:*

4.3.1 User shall operate the EVM within TI's recommended specifications and environmental considerations stated in the user guide, other available documentation provided by TI, and any other applicable requirements and employ reasonable and customary safeguards. Exceeding the specified performance ratings and specifications (including but not limited to input and output voltage, current, power, and environmental ranges) for the EVM may cause personal injury or death, or property damage. If there are questions concerning performance ratings and specifications, User should contact a TI field representative prior to connecting interface electronics including input power and intended loads. Any loads applied outside of the specified output range may also result in unintended and/or inaccurate operation and/or possible permanent damage to the EVM and/or interface electronics. Please consult the EVM user guide prior to connecting any load to the EVM output. If there is uncertainty as to the load specification, please contact a TI field representative. During normal operation, even with the inputs and outputs kept within the specified allowable ranges, some circuit components may have elevated case temperatures. These components include but are not limited to linear regulators, switching transistors, pass transistors, current sense resistors, and heat sinks, which can be identified using the information in the associated documentation. When working with the EVM, please be aware that the EVM may become very warm.

4.3.2 EVMs are intended solely for use by technically qualified, professional electronics experts who are familiar with the dangers and application risks associated with handling electrical mechanical components, systems, and subsystems. User assumes all responsibility and liability for proper and safe handling and use of the EVM by User or its employees, affiliates, contractors or designees. User assumes all responsibility and liability to ensure that any interfaces (electronic and/or mechanical) between the EVM and any human body are designed with suitable isolation and means to safely limit accessible leakage currents to minimize the risk of electrical shock hazard. User assumes all responsibility and liability for any improper or unsafe handling or use of the EVM by User or its employees, affiliates, contractors or designees.

4.4 User assumes all responsibility and liability to determine whether the EVM is subject to any applicable international, federal, state, or local laws and regulations related to User's handling and use of the EVM and, if applicable, User assumes all responsibility and liability for compliance in all respects with such laws and regulations. User assumes all responsibility and liability for proper disposal and recycling of the EVM consistent with all applicable international, federal, state, and local requirements.

5. *Accuracy of Information:* To the extent TI provides information on the availability and function of EVMs, TI attempts to be as accurate as possible. However, TI does not warrant the accuracy of EVM descriptions, EVM availability or other information on its websites as accurate, complete, reliable, current, or error-free.

6. *Disclaimers:*

6.1 EXCEPT AS SET FORTH ABOVE, EVMS AND ANY MATERIALS PROVIDED WITH THE EVM (INCLUDING, BUT NOT LIMITED TO, REFERENCE DESIGNS AND THE DESIGN OF THE EVM ITSELF) ARE PROVIDED "AS IS" AND "WITH ALL FAULTS." TI DISCLAIMS ALL OTHER WARRANTIES, EXPRESS OR IMPLIED, REGARDING SUCH ITEMS, INCLUDING BUT NOT LIMITED TO ANY EPIDEMIC FAILURE WARRANTY OR IMPLIED WARRANTIES OF MERCHANTABILITY OR FITNESS FOR A PARTICULAR PURPOSE OR NON-INFRINGEMENT OF ANY THIRD PARTY PATENTS, COPYRIGHTS, TRADE SECRETS OR OTHER INTELLECTUAL PROPERTY RIGHTS.

6.2 EXCEPT FOR THE LIMITED RIGHT TO USE THE EVM SET FORTH HEREIN, NOTHING IN THESE TERMS SHALL BE CONSTRUED AS GRANTING OR CONFERRING ANY RIGHTS BY LICENSE, PATENT, OR ANY OTHER INDUSTRIAL OR INTELLECTUAL PROPERTY RIGHT OF TI, ITS SUPPLIERS/LICENSORS OR ANY OTHER THIRD PARTY, TO USE THE EVM IN ANY FINISHED END-USER OR READY-TO-USE FINAL PRODUCT, OR FOR ANY INVENTION, DISCOVERY OR IMPROVEMENT, REGARDLESS OF WHEN MADE, CONCEIVED OR ACQUIRED.

7. *USER'S INDEMNITY OBLIGATIONS AND REPRESENTATIONS.* USER WILL DEFEND, INDEMNIFY AND HOLD TI, ITS LICENSORS AND THEIR REPRESENTATIVES HARMLESS FROM AND AGAINST ANY AND ALL CLAIMS, DAMAGES, LOSSES, EXPENSES, COSTS AND LIABILITIES (COLLECTIVELY, "CLAIMS") ARISING OUT OF OR IN CONNECTION WITH ANY HANDLING OR USE OF THE EVM THAT IS NOT IN ACCORDANCE WITH THESE TERMS. THIS OBLIGATION SHALL APPLY WHETHER CLAIMS ARISE UNDER STATUTE, REGULATION, OR THE LAW OF TORT, CONTRACT OR ANY OTHER LEGAL THEORY, AND EVEN IF THE EVM FAILS TO PERFORM AS DESCRIBED OR EXPECTED.

8. *Limitations on Damages and Liability:*

8.1 *General Limitations.* IN NO EVENT SHALL TI BE LIABLE FOR ANY SPECIAL, COLLATERAL, INDIRECT, PUNITIVE, INCIDENTAL, CONSEQUENTIAL, OR EXEMPLARY DAMAGES IN CONNECTION WITH OR ARISING OUT OF THESE TERMS OR THE USE OF THE EVMS , REGARDLESS OF WHETHER TI HAS BEEN ADVISED OF THE POSSIBILITY OF SUCH DAMAGES. EXCLUDED DAMAGES INCLUDE, BUT ARE NOT LIMITED TO, COST OF REMOVAL OR REINSTALLATION, ANCILLARY COSTS TO THE PROCUREMENT OF SUBSTITUTE GOODS OR SERVICES, RETESTING, OUTSIDE COMPUTER TIME, LABOR COSTS, LOSS OF GOODWILL, LOSS OF PROFITS, LOSS OF SAVINGS, LOSS OF USE, LOSS OF DATA, OR BUSINESS INTERRUPTION. NO CLAIM, SUIT OR ACTION SHALL BE BROUGHT AGAINST TI MORE THAN TWELVE (12) MONTHS AFTER THE EVENT THAT GAVE RISE TO THE CAUSE OF ACTION HAS OCCURRED.

8.2 *Specific Limitations.* IN NO EVENT SHALL TI'S AGGREGATE LIABILITY FROM ANY USE OF AN EVM PROVIDED HEREUNDER, INCLUDING FROM ANY WARRANTY, INDEMNITY OR OTHER OBLIGATION ARISING OUT OF OR IN CONNECTION WITH THESE TERMS, , EXCEED THE TOTAL AMOUNT PAID TO TI BY USER FOR THE PARTICULAR EVM(S) AT ISSUE DURING THE PRIOR TWELVE (12) MONTHS WITH RESPECT TO WHICH LOSSES OR DAMAGES ARE CLAIMED. THE EXISTENCE OF MORE THAN ONE CLAIM SHALL NOT ENLARGE OR EXTEND THIS LIMIT.

9. *Return Policy.* Except as otherwise provided, TI does not offer any refunds, returns, or exchanges. Furthermore, no return of EVM(s) will be accepted if the package has been opened and no return of the EVM(s) will be accepted if they are damaged or otherwise not in a resalable condition. If User feels it has been incorrectly charged for the EVM(s) it ordered or that delivery violates the applicable order, User should contact TI. All refunds will be made in full within thirty (30) working days from the return of the components(s), excluding any postage or packaging costs.

10. *Governing Law:* These terms and conditions shall be governed by and interpreted in accordance with the laws of the State of Texas, without reference to conflict-of-laws principles. User agrees that non-exclusive jurisdiction for any dispute arising out of or relating to these terms and conditions lies within courts located in the State of Texas and consents to venue in Dallas County, Texas. Notwithstanding the foregoing, any judgment may be enforced in any United States or foreign court, and TI may seek injunctive relief in any United States or foreign court.

Mailing Address: Texas Instruments, Post Office Box 655303, Dallas, Texas 75265
Copyright © 2023, Texas Instruments Incorporated

IMPORTANT NOTICE AND DISCLAIMER

TI PROVIDES TECHNICAL AND RELIABILITY DATA (INCLUDING DATA SHEETS), DESIGN RESOURCES (INCLUDING REFERENCE DESIGNS), APPLICATION OR OTHER DESIGN ADVICE, WEB TOOLS, SAFETY INFORMATION, AND OTHER RESOURCES "AS IS" AND WITH ALL FAULTS, AND DISCLAIMS ALL WARRANTIES, EXPRESS AND IMPLIED, INCLUDING WITHOUT LIMITATION ANY IMPLIED WARRANTIES OF MERCHANTABILITY, FITNESS FOR A PARTICULAR PURPOSE OR NON-INFRINGEMENT OF THIRD PARTY INTELLECTUAL PROPERTY RIGHTS.

These resources are intended for skilled developers designing with TI products. You are solely responsible for (1) selecting the appropriate TI products for your application, (2) designing, validating and testing your application, and (3) ensuring your application meets applicable standards, and any other safety, security, regulatory or other requirements.

These resources are subject to change without notice. TI grants you permission to use these resources only for development of an application that uses the TI products described in the resource. Other reproduction and display of these resources is prohibited. No license is granted to any other TI intellectual property right or to any third party intellectual property right. TI disclaims responsibility for, and you will fully indemnify TI and its representatives against, any claims, damages, costs, losses, and liabilities arising out of your use of these resources.

TI's products are provided subject to [TI's Terms of Sale](#) or other applicable terms available either on [ti.com](https://www.ti.com) or provided in conjunction with such TI products. TI's provision of these resources does not expand or otherwise alter TI's applicable warranties or warranty disclaimers for TI products.

TI objects to and rejects any additional or different terms you may have proposed.

Mailing Address: Texas Instruments, Post Office Box 655303, Dallas, Texas 75265
Copyright © 2025, Texas Instruments Incorporated