

DLP® Display ≥0.47-in Array WUXGA/1080p/WXGA/XGA/SVGA Evaluation Module



Description

The DLPC4430EVM provides a design for driving the above DMDs, and allow for testing of customer front end systems. The combination of the DLPC4430EVM with any of these DMD EVMs can display SPLASH, test patterns or video from HDMI™ source on the DMD. The DLPC4430EVM controller evaluation module (EVM) can accelerate the prototyping time of DLP 1080p (1920x1080), WUXGA (1920x1200), WXGA (1280x800), XGA (1024x768), and SVGA (800x600) systems over 2000 lumens when combined with the DLP650NEEVM, DLP780NEEVM, DLP470NEEVM, DLP670REEVM, DLP800REEVM, DLP480REEVM, DLP550JEEVM, DLP550HEEVM, or DLP650LEEVM digital micromirror device (DMD) EVMs.

Get Started

1. Order [DLPC4430](#) chipset EVMs (controller and DMD) and an applicable power supply.
2. Read this user's guide completely and the DLPC4430 Software Programmer's Guide.
3. Download the DLPC44xx-GUI and the DLPC4430EVM-SW from the product page ([DLPC4430](#)).

4. Download the DMD EVM and the controller [EVM design files](#).

Features

- Supports up to WUXGA resolution at 1920x1200 at 120 Hz (2D and 3D)
- Designed to be used with a 1080p, WUXGA and SVGA/XGA/WXGA EVM
- Includes one DLPC4430 controller and one DLPA100 controller PMIC and motor driver
- Power supply, optics, illumination source, and extension cables are not included
- Offers several interface options for USB, I2C and trigger inputs and outputs

Applications

- [Laser TV](#)
- [Educational projectors](#)
- [Digital signage](#)
- [Gaming machines](#)
- [Smart lighting](#)
- [Stage lighting systems](#)



DLP800REEVM and DLPC4430EVM Evaluation Module



This design incorporates HDMI® technology.

1 Evaluation Module Overview

1.1 Introduction

This user's guide explains the hardware and software features of the DLP Products DLP650NEEVM, DLP780NEEVM, DLP470NEEVM, DLP670REEVM, DLP800REEVM, DLP480REEVM, DLP550JEEVM, DLP550HEEVM, DLP650LEEVM, and DLPC4430EVM systems. The EVM architecture and connectors are described along with a quick start guide on how to operate the previous mentioned EVMs using the DLPC44xx-GUI. Specific DLP® chip details and operation can be found in related component documentation.

Note

Power supply, optics, illumination source, and extension cables are sold separately. See [Section 1.5](#).

The DLP Products listed in paired with DLPC4430EVM offer a reference design to enable faster development cycles for users of the DLPC4430 controllers and allow evaluation of DLPC4430 chipsets. The combination of DMD and controller is referred to as a chipset.

These evaluation kits bring together a set of components providing a great starting point to evaluate a DLP system for applications listed in the above section.

1.2 Kit Contents

The DMD EVMs found in [Table 1-1](#) and DLPC4430EVM are designed to be used in pairs. The DMD EVMs cannot be operated with the Controller EVM, DLPC4430EVM.

The DMD EVMs have a board-mounted connector that mates with to the DLPC4430EVM controller board. DLPC4430EVM includes all circuitry required to drive the DMD EVM.

The DLPC4430EVM includes one DLPC4430 controller, two DLPA100s which serve as the power management and motor drivers, and other system circuitry such as the parallel receiver and system fan control.

The DLPC4430EVM can be programmed with any firmware which is available on the [DLPC4430](#) product page. This firmware allows the DLPC4430EVM to drive the desired display chip. [Figure 1-1](#), [Figure 1-2](#), [Figure 1-3](#), [Figure 1-3](#), and [Figure 1-3](#) show the top side of each EVM.

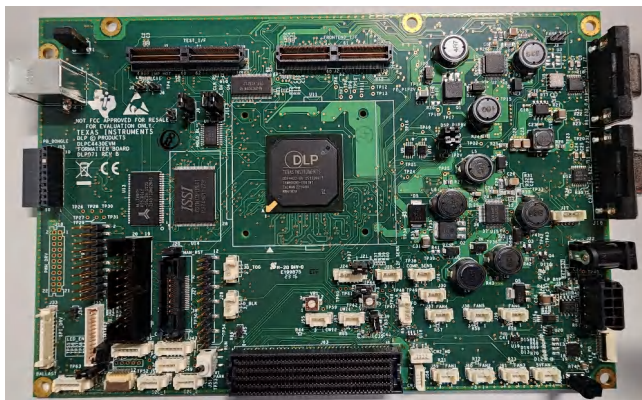


Figure 1-1. DLPC4430EVM

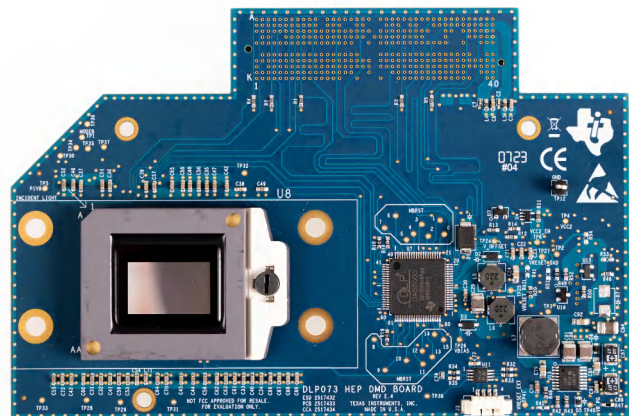


Figure 1-2. DLP780NEEVM/DLP800REEVM

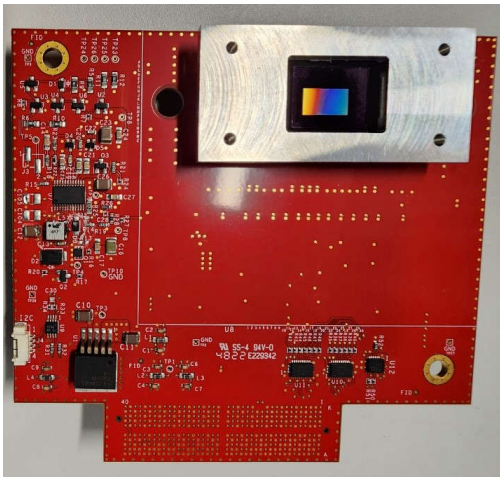


Figure 1-3. DLP470NEEVM/DLP480REEVM



Figure 1-4. DLP550HEEVM/DLP550JEEVM/
DLP650LEEVM

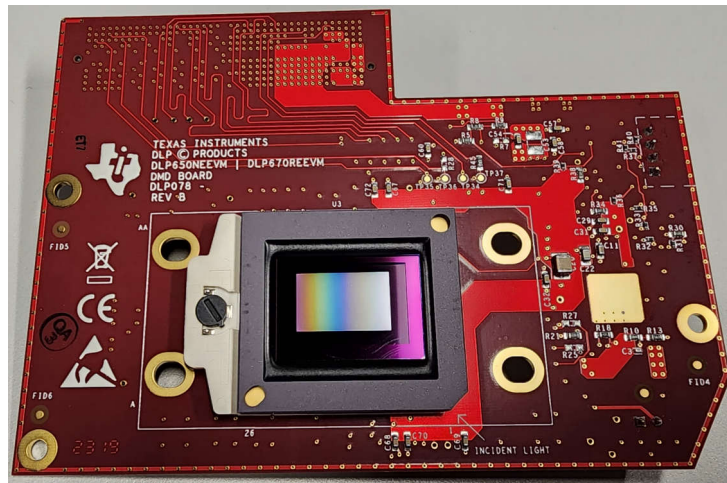


Figure 1-5. DLP650NEEVM/DLP670REEVM

1.3 Specification

INPUT PARAMETERS	CONDITIONS	MIN	TYP	MAX	UNIT
V_{dc}	Section 3.2	11.4	12	13.2	V
I				7	A

1.4 Device Information

The DMD EVMs and DLPC4430EVM contain the electronics required to drive any DMD found in [Table 1-1](#). The DLPC4430EVM offers several interface options for USB, I2C, and trigger inputs and outputs.

Table 1-1. DMD EVMs

DMD Covered	Resolution	EVM #
DLP780NE	1080p	DLP073
DLP800RE	WUXGA	DLP098
DLP550HE	SVGA	DLP077
DLP550JE	XGA	DLP100
DLP650LE	WXGA	DLP101
DLP650NE	1080p	DLP078
DLP670RE	WUXGA	DLP102
DLP470NE	1080p	DLP079
DLP480RE	WUXGA	DLP103

The system block diagram [Figure 1-6](#) details the functionality and control when using the DLP650NEEVM and DLPC4430EVM.

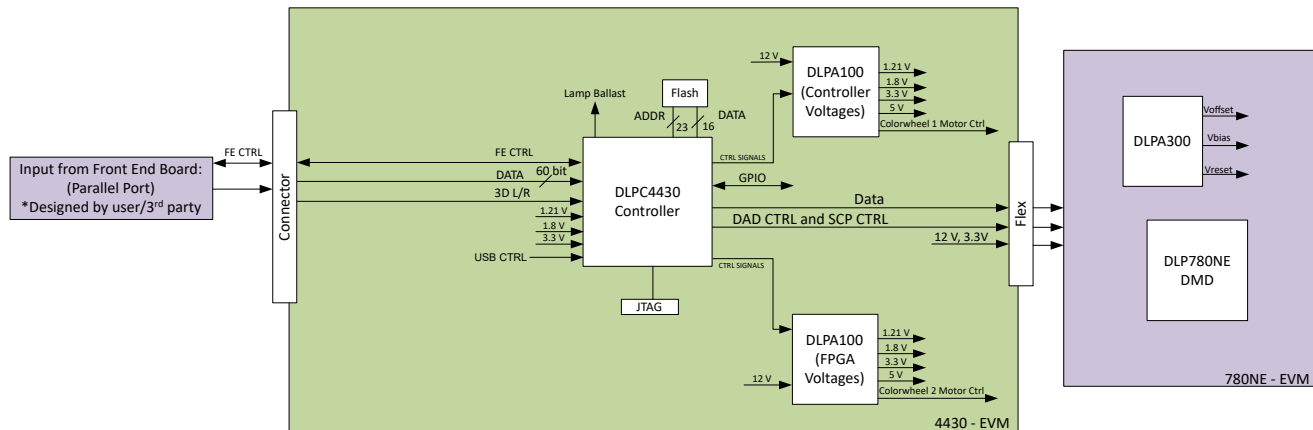


Figure 1-6. EVM System Block Diagram

The major components of the DLPC4430EVM are:

- One DLPC4430 controller
- Two DLPA100 power management and motor driver chips

The major components of the DLP780NEEVM and DLP800REEVM are:

- DLP780NE 0.78-inch 1080p DMD or DLP800RE 0.8-inch WUXGA DMD
- Connector designed to attach the to the DLPC4430EVM
- DLPA300 used to generate the DMD's reset voltages

The major components of the DLP550HEEVM, DLP550JEEVM, and DLP650LEEVM are:

- DLP550HE 0.55-inch SVGA DMD, DLP550JE 0.55-inch DMD, or DLP650LE 0.65-inch DMD
- Connector designed to attach the to the DLPC4430EVM
- DLPA200 used to generate the DMD's reset voltages

The major components of the DLP650NEEVM and DLP670REEVM are:

- DLP650NE 0.65-inch 1080p DMD or DLP670RE 0.67-inch WUXGA DMD
- Connector designed to attach the to the DLPC4430EVM
- TPS65145 used to generate the DMD's reset voltages

The major components of the DLP470NEVM and DLP480REEVM are:

- DLP470NE 0.47-inch 1080p DMD or DLP480RE 0.48-inch WUXGA DMD
- Connector designed to attach the to the DLPC4430EVM
- TPS65145 used to generate the DMD's reset voltages

1.5 Other Items Needed for Operation

The DMD EVMs and the DLPC4430EVM are capable of displaying images on to the DMD. The EVMs are meant to accelerate initial system design. The EVMs are meant to accelerate initial system design. However, these EVMs do not ship with optics, illumination source, cables, power supplies, or additional hardware components. These are system parameters that are left for the user to design or provide:

- Power supply (See [Section 3.2.1](#))
- Mini-USB cable: USB A or B cable
- Optics
- Illumination module and source
- Front-End Parallel Port source

2 Software

2.1 Connecting the DMD EVM to the DLPC4430EVM

Before connecting a DLP EVM to the DLPC4420AEVM, identify the male connector on the back of the DMD EVM.

The connectors are keyed by design and must follow an orientation to mate with the female connector (J63) located on the DLPC4430EVM.

The EVM needs to look like [Figure 2-1](#) after the FMC cables have been properly connected between the DLP650NEEVM and the DLPC4430EVM. The process is the same for use with the other DMDs seen in .



Figure 2-1. EVMs Connected

2.2 Quick Start

This section details a quick start guide on how to:

- Download the associated software
- Connect a DMD EVM to the DLPC4430EVM
- Power up the DLPC4430EVM
- Program the DLPC4430EVM to display a SPLASH image on the DMD
- Troubleshoot issues

2.2.1 Downloading the Software

Before programming the DLPC4430EVM, make sure the DLPC44xx GUI and DMD firmware have both been downloaded to the PC. The DLPC44xx GUI allows for operation of the EVM and the DMD firmware is required according to DMD being utilized. If the DLP650NEEVM is being used, then the DLP650NE firmware is needed.

The DMD firmware and DLPC44xx GUI can be found under the *Software Development* tab of the product pages on TI.com. To get started, these are the product pages for the [DLP780NE](#), [DLP800RE](#), [DLP470NE](#), [DLP480RE](#), [DLP550HE](#), [DLP550JE](#), [DLP650LE](#), [DLP650NE](#), [DLP670RE](#), and the [DLPC4430](#).

2.2.2 Powering-up the DLPC4430EVM and Preparing for the DLPC4430EVM to be Programmed

Before powering up the EVM, make sure the included DLPC4430EVM jumpers are in the correct positions. The jumper locations are listed in [Table 2-1](#).

Table 2-1. Reference Designators

Jumper	Description (Bold Indicates Default Position)
J9 - Red LED enable or Lamp Ballast	Pins 1, 2 connected Red LED Enable Pins 2,3 connected Lamp Mode
J10 - Daughter Card I2C Clock	Pins 1, 2 connected I2C to SCL1 Pins 2,3 connected I2C to SCL0
J11 - Daughter Card I2C Data	Pins 1, 2 connected I2C to SDA1 Pins 2,3 connected I2C to SDA0
J12 - Front-end DSP Power	Pins 1, 2 connected to 1.8V Pins 2,3 unused
J13 - Front-end Power	Pins 1, 2 connected to 1.1V Pins 2,3 unused
J21 - Controller Sensor selection	Pins 1, 2 connected ADC_SDI Pins 2,3 connected Comparator Sensor I/F
J29 - Controller Sensor selection (Continued)	Pins 1,2 connected ADC_SDO Pins 2,3 connected Light to Frequency Sensor I/F
J46 - DMD Current Selection	Pins 1,2 connected for Low Current DMDs Pins 2,3 connected for High Current DMDs

Jumper J8 is the *Hold BL* jumper. This jumper is used to put the DLPC4430EVM into boot loader mode, which allows the DLPC4430 controllers to be programmed. Connect this jumper to prepare the DLPC4430EVM to be programmed.

To power up the DLPC4430EVM, a 12 V, 5 A power supply is needed. Make sure the power supply is functional and the switch SW1 on the EVM is set to off before connecting the power supply to the EVM. Connecting the power supply when the switch is in the off position can prevent damage to the DLPC4430EVM from poor power connections. The figure below shows SW1 in the on position.

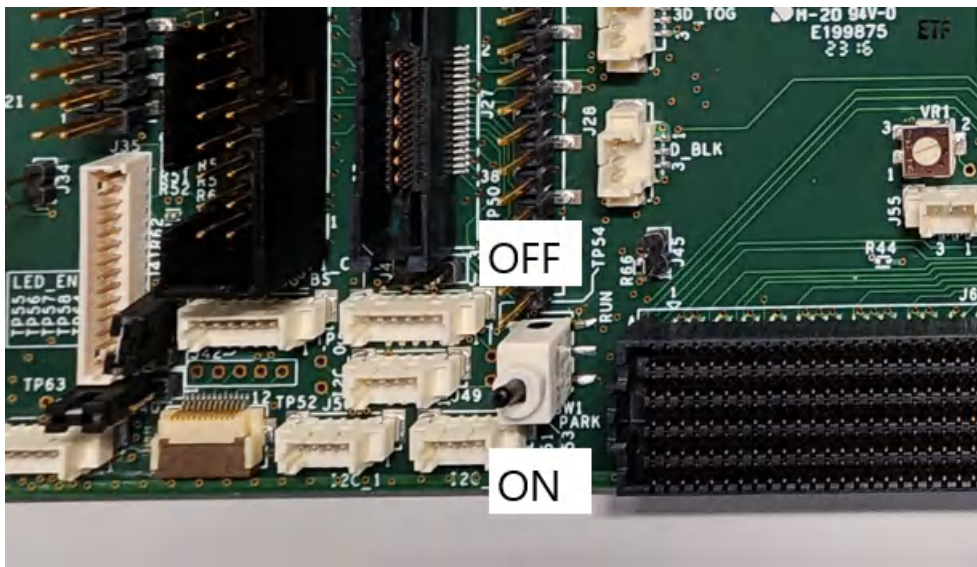


Figure 2-2. ON/OFF Switch

Once the power supply has been connected to the DLPC4430EVM, the switch SW1 can be flipped to the “on” position. The user can then plug in the USB cable into the board to prepare for programming the board.

2.2.3 Programming the DLPC4430EVM and Displaying a SPLASH Image

Follow these steps to download and configure the DLPC44xx GUI:

1. Download and install the associated Firmware SW package. The Projector Control (.projector) and Firmware binary (.img) files are located in the install directory. The same procedure applies to the other supported DMDs within the appropriate firmware install directory.
2. Setting up Communication Preferences:
 - a. DLPC44xx GUI supports USB and I2C communication. To change these settings, please go to Edit->Preferences->Communication.

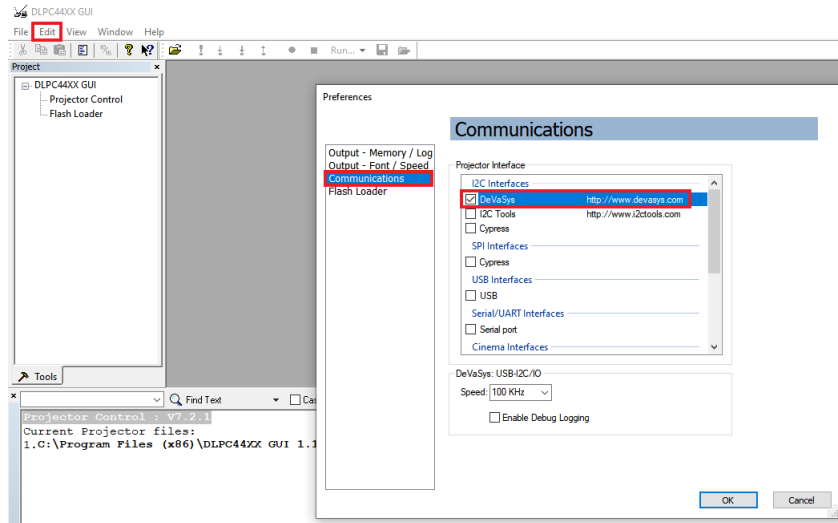


Figure 2-3. DeVaSys Communication Configuration

- b. For USB, select the USB interface.

Note

USB is the preferred method to download the firmware flash image to the projector as USB is much faster than I2C.

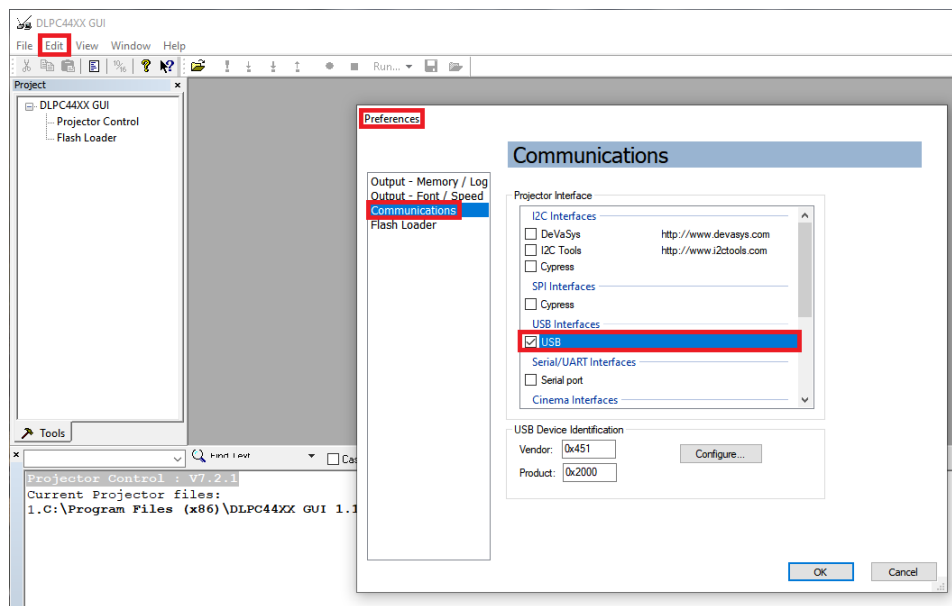


Figure 2-4. USB Communication Configuration

- c. An error message can appear saying the USB driver cannot be opened. This is expected, as TI has not yet enabled communication on the board. Click OK on this error.

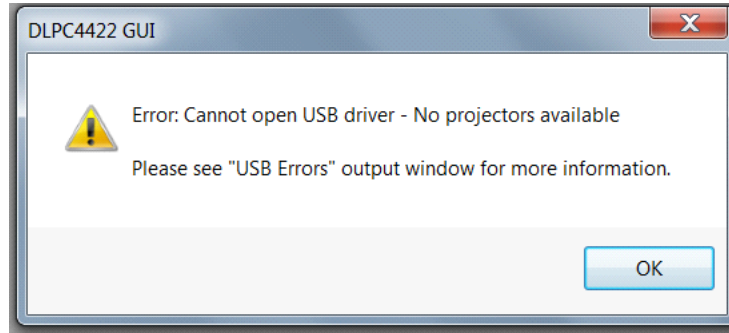


Figure 2-5. Error Message

3. Projector Control Configuration:

- a. Run the DLPC44xx GUI tool and select the *Projector Control* sub-tool.

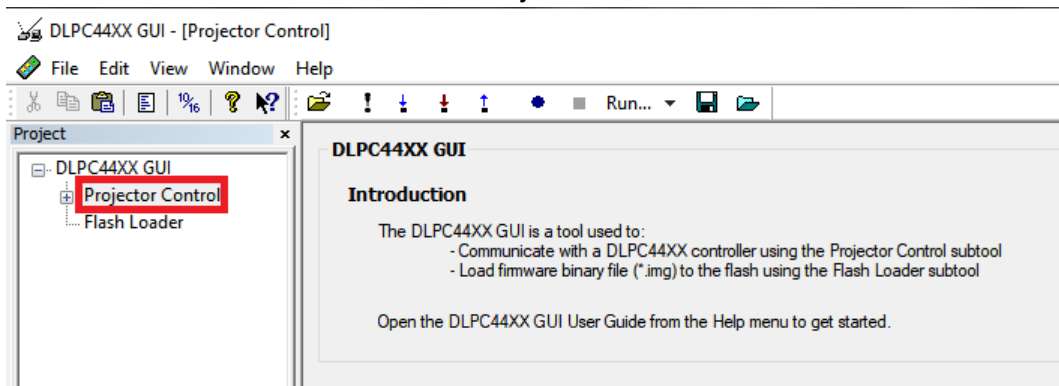


Figure 2-6. Projector Control Menu

- b. Select *Open Projector File* then select *Add*. Navigate to the .projector file location installed in step 1.

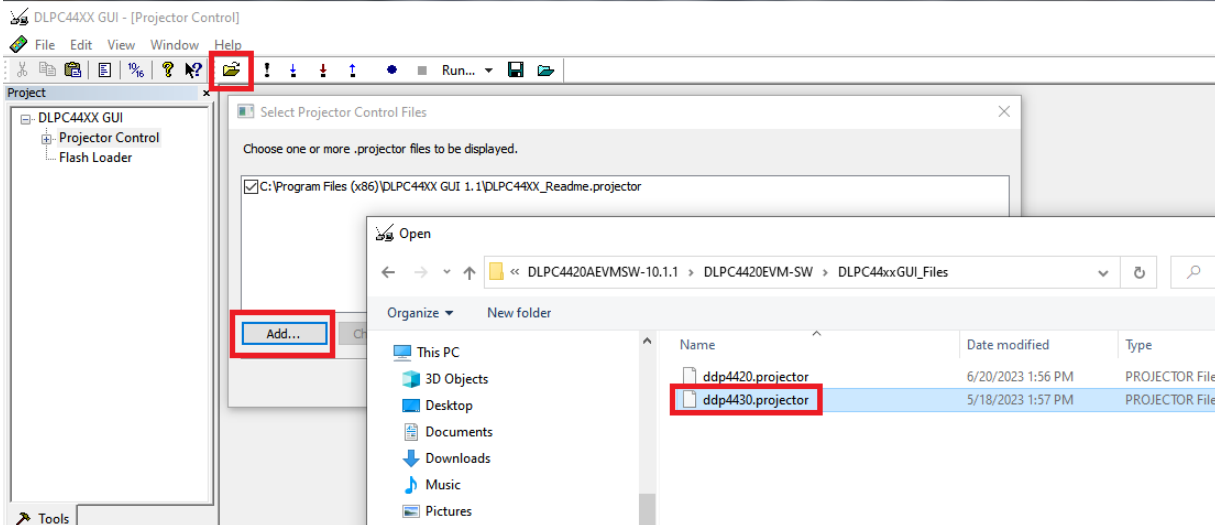


Figure 2-7. Adding DLPC4430 Projector Control File

- c. Make sure the desired *Projector Control File* is checked, then select **OK**.

Note

If the user wants to use one Projector Control file at a time, then de-select the files to hide before selecting **OK**.

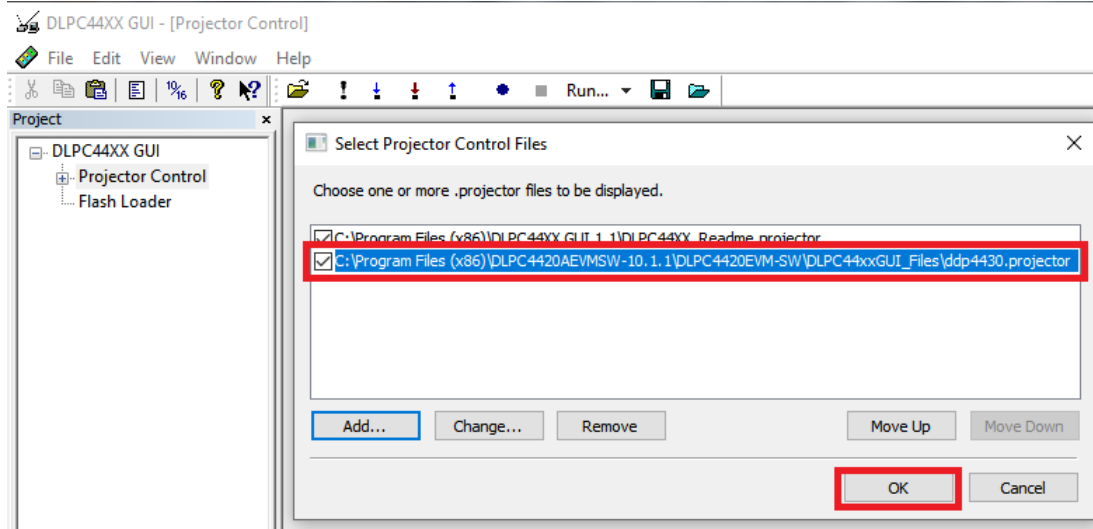


Figure 2-8. Projector Control File for the Chosen Chipset

- d. Once this file is loaded, the user can navigate through the pages to control a DLPC4430 controller.

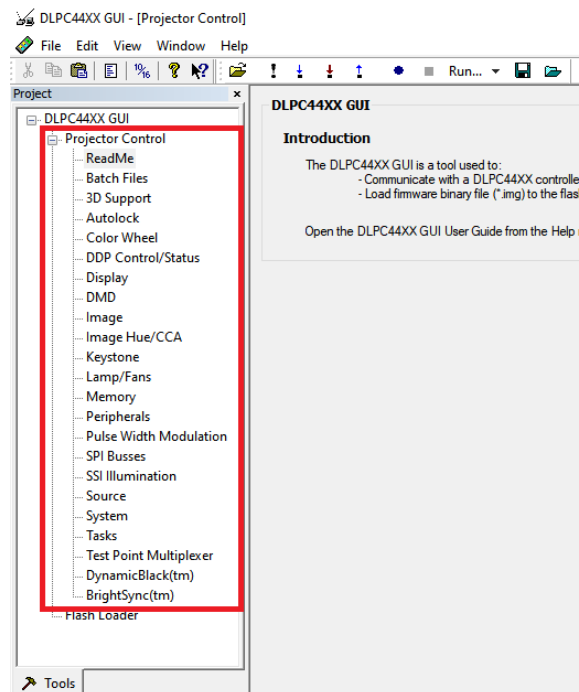


Figure 2-9. DLPC4430 Projector Control Menu

4. Flash Loader Configuration:

- a. Select the Flash Loader sub-tool, then select the *Browse* button. Navigate to the .img file installed in Step 1 and select *Open*.

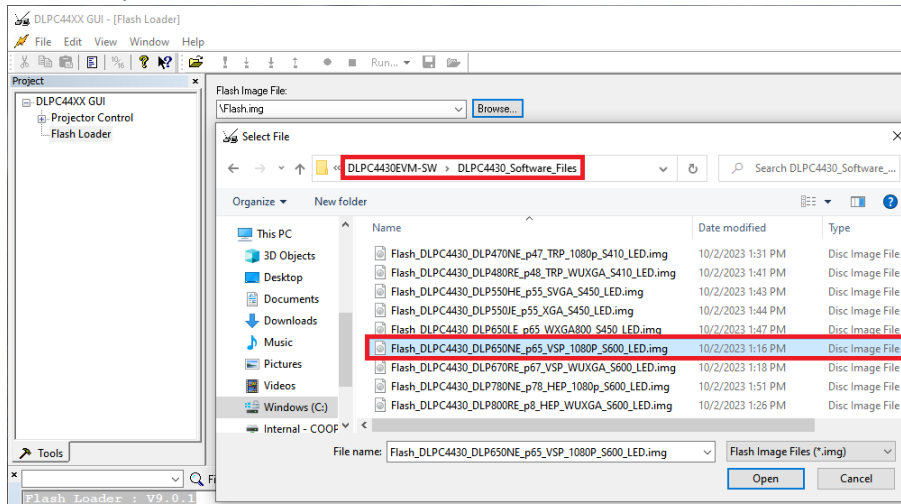


Figure 2-10. Loading the Flash Image

- b. Select *Complete Image Download* if this is the first time download. The flash has the boot loader pre-loaded; uncheck the *Skip Boot Loader Area*.

Check *Skip Boot Loader Area* only if you need to upgrade the bootloader.

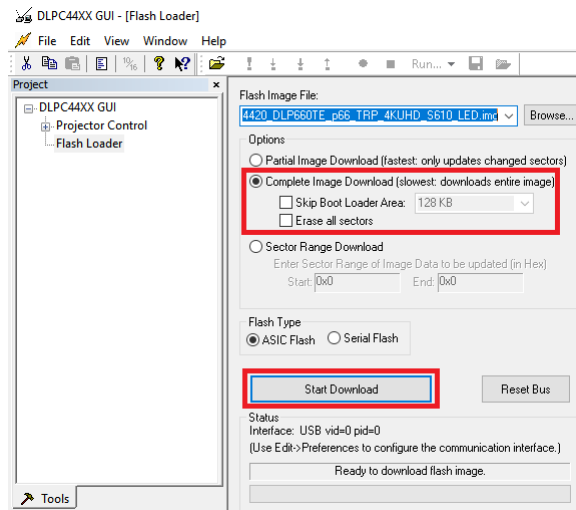


Figure 2-11. Downloading Image unto the EVM

- c. Connect DLPC4420AEMV to PC via USB. Make sure USB communication capability by clicking *Reset Bus* on the bootloader menu in the DLPC44xx GUI. The *Status* field looks as follows:

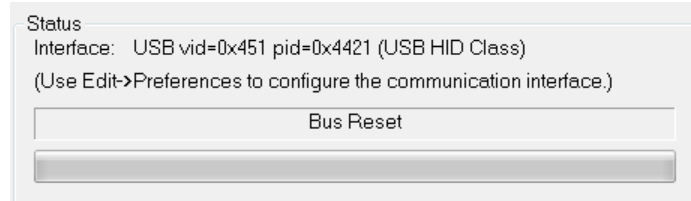


Figure 2-12. Communication Between GUI and EVMs

Note

If there is an issue with USB communication, then turn off DLPC4430EVM and disconnect then reconnect USB cable and power on board.

- d. Select *Start Download* to begin. The loading process takes about 2 minutes.
- e. After the download has completed, switch SW1 to *OFF* and switch the power to the unit under test (UUT) off. Remove the jumper on J8 from the DLPC4430EVM board.
- f. After removing the jumper, re-enable power to the DLPC4430EVM. Switch SW1 to the “On” position. A Red LED appears after a few seconds. The Red LED shuts off and a green LED begins blinking. After the blinking LED appears, the DLP Texas Instruments logo is visible on the DMD for a few seconds. The DMD appears as seen in [Figure 2-13](#):

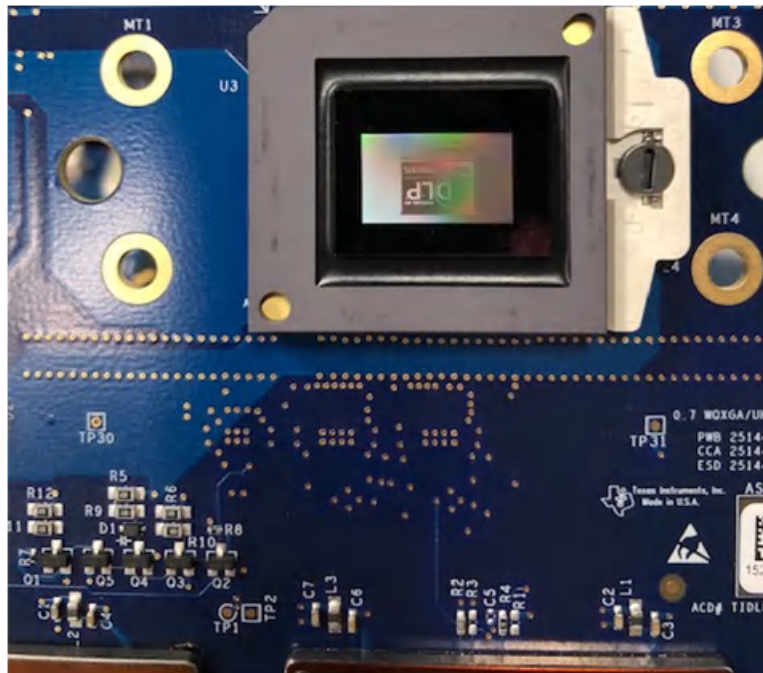


Figure 2-13. Splash Image Displayed on DMD

Turn the switch back to the *OFF* position before connecting the USB cable to DLPC4430EVM. The power supply does not have to be disconnected before connecting the USB cable. Once the USB cable is connected to the DLPC4430EVM (and the PC), turn the switch on the DLPC4430EVM to the “on” position.

2.2.4 JTAG Flash Programming

The JTAG Programmer Tool is included in the DLPC4420EVM-SW bundle, and allows a user to program the bootloader image into the flash using the JTAG boundary scan connector if, for example, the bootloader becomes corrupted and the board is rendered inoperable. The tool can also be used for updating the entire firmware image. Programming the entire firmware image using this method takes a long time and is suggested to program only the bootloader using this method. Following, the DLPC44xx GUI with a USB connection to upload the entire firmware image. The following steps are for programming only the bootloader image.

The JTAG Programmer Tool requires the UM232H module with modifications, which is manufactured by Future Technology Devices International Ltd (FTDI Chip), . The UM232H module can be purchased from Digi-key with the following part number: 768-1103-ND. The driver can be downloaded from the FTDI website (www.ftdichip.com). Select the VCP CDM WHQL Certified driver for Windows.

Make the following modifications to the UM232H and use [Figure 2-14](#) and [Figure 2-15](#) as a guide.

Table 2-2. Connection Details

UM232H Reference	Description	Connection Type
J1 Bus Power Configuration	Short J1 PIN #2 and PIN # 3	SYS POWER
J2 Bus Power Configuration	Short J2 PIN #2 and PIN #3	I/O POWER
J2-6	GND	POWER
J2-7	TCK	OUTPUT
J2-8	TDO1	OUTPUT
J2-9	TDI	INPUT
J2-10	TMS1	OUTPUT
J2-11	TRSTZ	OUTPUT

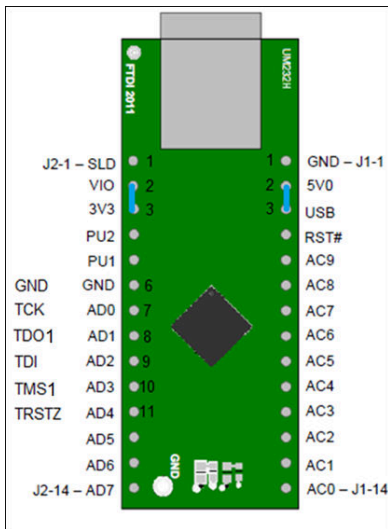


Figure 2-14. UM232H Module

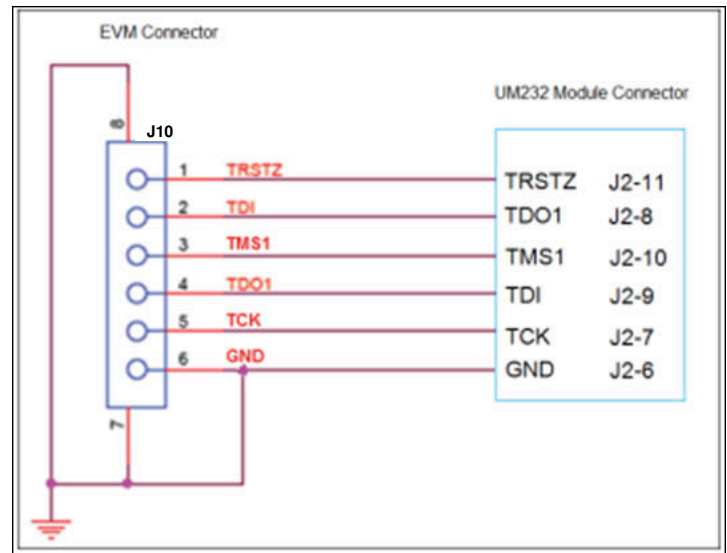


Figure 2-15. UM232H Wiring Diagram

Choose the driver found in the CDM WHQL Certified zip folder and allow driver installation to complete. Install a jumper at J31 on the DLPC4420AEMV and connect the JTAG signals at J37 on the DLPC4420AEMV to the UM232H module as shown in [Figure 2-15](#). Finally, connect the UM232H to the PC with USB cable.

Note

The JTAG programmer has a copy of the FlashDeviceParameters.txt file, which is located in the DLPC4420EVM-SW\JTAG_Programmer_Tool\DLPC44xx-JTAG directory of the DLPC4420AEVMSW-10.1.1 bundle. See [Section 2.2.5](#) for instructions on how to edit this file to match the flash. If the user has already made changes to the FlashDeviceParameters.txt file in the DLPC4420-SW\DLPC44xxGUI_Files directory that work with the GUI, then the user can copy that file to the DLPC4420EVM-SW\JTAG_Programmer_Tool\DLPC44xx-JTAG directory.

Please see the 'JTAG_Bootloader_Programming_Guide.pdf' within the DLPC4420EVM-SW\JTAG_Programmer_Tool directory or follow the below instructions.

Start the Flash Programmer program and select the BoardFile.brd and the bootloader.bin included the install folder. Select USB as communication method from the Settings menu.

Power-up the EVM board and click the *Detect Chain* tool button. The tool detects the DLPC4420 in JTAG chain. On the EVM notice the **Green** LED (D8) lights up to confirm the DLPC4420 is currently connected.

On the Flash Programmer program, click the *Flash Info* button and confirm the correct flash part is detected by the tool. Using the *Flash Erase* button select the first sectors (to cover first 128 kilobytes) and erase these sectors.

Once sector erase is complete, set the *Start Address* (HEX) to 0x00000000 and set the *Size* (HEX) to 0x20000. Then click the *Program Flash* button, and then wait until write is complete.

Note

Make sure that verify is 100% complete!

Then, remove the UM232H connection at J37 and jumper at J31. Cycle the board power to the EVM. Finally, plug in a USB cable between the EVM and the PC and allow the PC to detect the EVM USB connection.

2.2.5 Flash Device Parameters

For EVM use with several different flash memory parts, the user can edit the FlashDeviceParameters.txt file to match the flash memory part that has been installed with the EVM. This file is located in the DLPC4430EVM-SW\DLPC44xxGUI_Files of the DLPC4430EVM-SW bundle. An example with the ISSI IS29GL128P part is shown in [Figure 2-16](#) where the user comments out all lines EXCEPT for the top line which includes the chosen ISSI flash part. More detailed information can be found in the comments at the top of the text file.

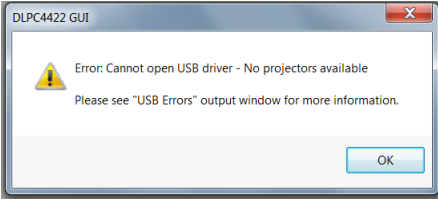
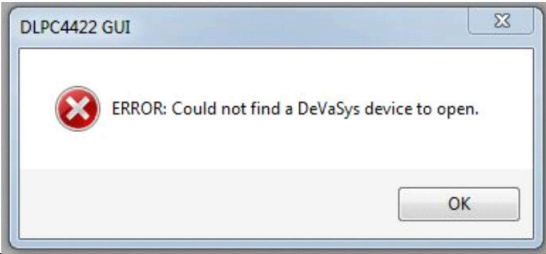
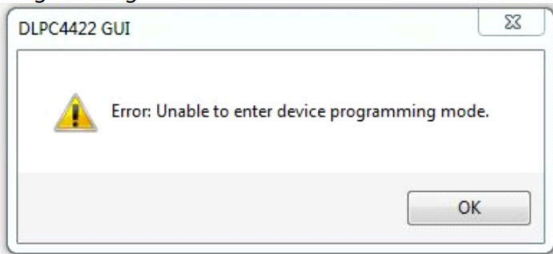
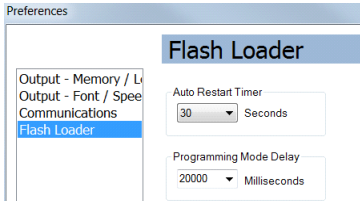
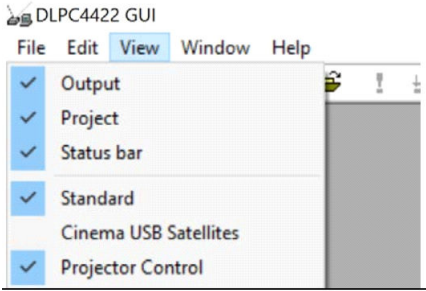
```
Version, 3
// Flash Device Information.
// DDP442x
//
// Parameters that need to be setup:
//=====
// Mfg             = Company name.
// MfgId           = Manufacturer ID stored in part
// LMfgId         = Long version of Manufacturer ID stored in part
// Device         = Part number from data sheet.
// DevID          = Device ID stored in part.(short_id - see Note 1.)
// LDevID         = Long Device ID stored in part. (long_id - see Note 1.)
// MB             = size of device in MBits (4, 8, or 16 MBit)
// alg            = A, B or C programming algorithm (0, 1, or 2 - See Note 2.)
// Size           = Number of bytes total.
// #sec           = Number of sectors.
// Sector_Addresses = List of sector addresses.

// Mfg   MfgID   LMfgID,       Device   DevID   LDevID,       Mb Alg   Size #sec  Sector_Addresses
"ISSI",  0x009d, 0x000000000000009d, "IS29GL128P", 0x227E, 0x000022012221227E,128,0,0x100000,128,0x0, 0x20000,0x40000,0x60000
BC0000, 0xBE0000, 0xC00000, 0xC20000, 0xC40000, 0xC60000, 0xC80000, 0xCA0000, 0xCC0000, 0xCE0000, 0xD00000, 0xD20000, 0xD40000, 0xD60000, 0xD80000, 0xDA0000, 0xDC0000, 0xDE0000, 0xE00000

"AMD",   0x0001, 0x0000000000000001, "Am29LV400B", 0x22BA, 0x00000000000022BA, 4, 0, 0x80000, 11, 0, 0x4000, 0x6000,
"AMD",   0x0001, 0x0000000000000001, "Am29LV800B", 0x225B, 0x000000000000225B, 8, 0, 0x100000, 19, 0, 0x4000, 0x6000,
"AMD",   0x0001, 0x0000000000000001, "Am29DL800B", 0x22CB, 0x00000000000022CB, 8, 0, 0x100000, 19, 0, 0x4000, 0x6000,
```

Figure 2-16. Flash Device Parameters Text File

2.2.6 Troubleshooting

Problem	Possible Resolutions
<p style="text-align: center;">USB Communication Error</p>  <p style="text-align: center;">Figure 2-17. USB Communication Error</p>	<p>Verify the correct communication settings have been applied. Make sure the USB cable is connected both to the projector and computer.</p>
<p style="text-align: center;">I2C communication error</p>  <p style="text-align: center;">Figure 2-18. I2C communication error</p>	<p>Verify the correct communication settings have been applied. Make sure a DeVasys box and the appropriate USB and I2C cables are connected.</p>
<p style="text-align: center;">Programming Mode error</p>  <p style="text-align: center;">Figure 2-19. Programming Mode error</p>	<p>Please check your connection settings and try again.</p> <p style="text-align: center;">Note</p> <p>If this occurs only occasionally, then increase the programming delay to 20000 ms.</p>  <p style="text-align: center;">Figure 2-20. Device Programming Delay Increase</p>
<p style="text-align: center;">Tool bars or panels missing</p>	 <p style="text-align: center;">Figure 2-21. Toolbar and Panel Display Settings</p>

If communication with the EVM has been lost, then consider re-flashing the bootloader following the JTAG Flash Programming Guide found within the Software package: [Section 2.2.4](#).

3 Hardware

3.1 Connections

This chapter introduces all the connections and test points available on the DLPC4430EVM, DLP780NEEVM, DLP800REEVM, DLP470NEEVM, DLP480REEVM, DLP550HEEVM, DLP550JEEVM, DLP650LEEVM, DLP650NEEVM, and DLP670REEVM.

3.1.1 DLPC4430EVM Connections

Figure 3-1 depicts the switches and connectors with their respective locations. Note that neither cables nor the power supply is included with the module.

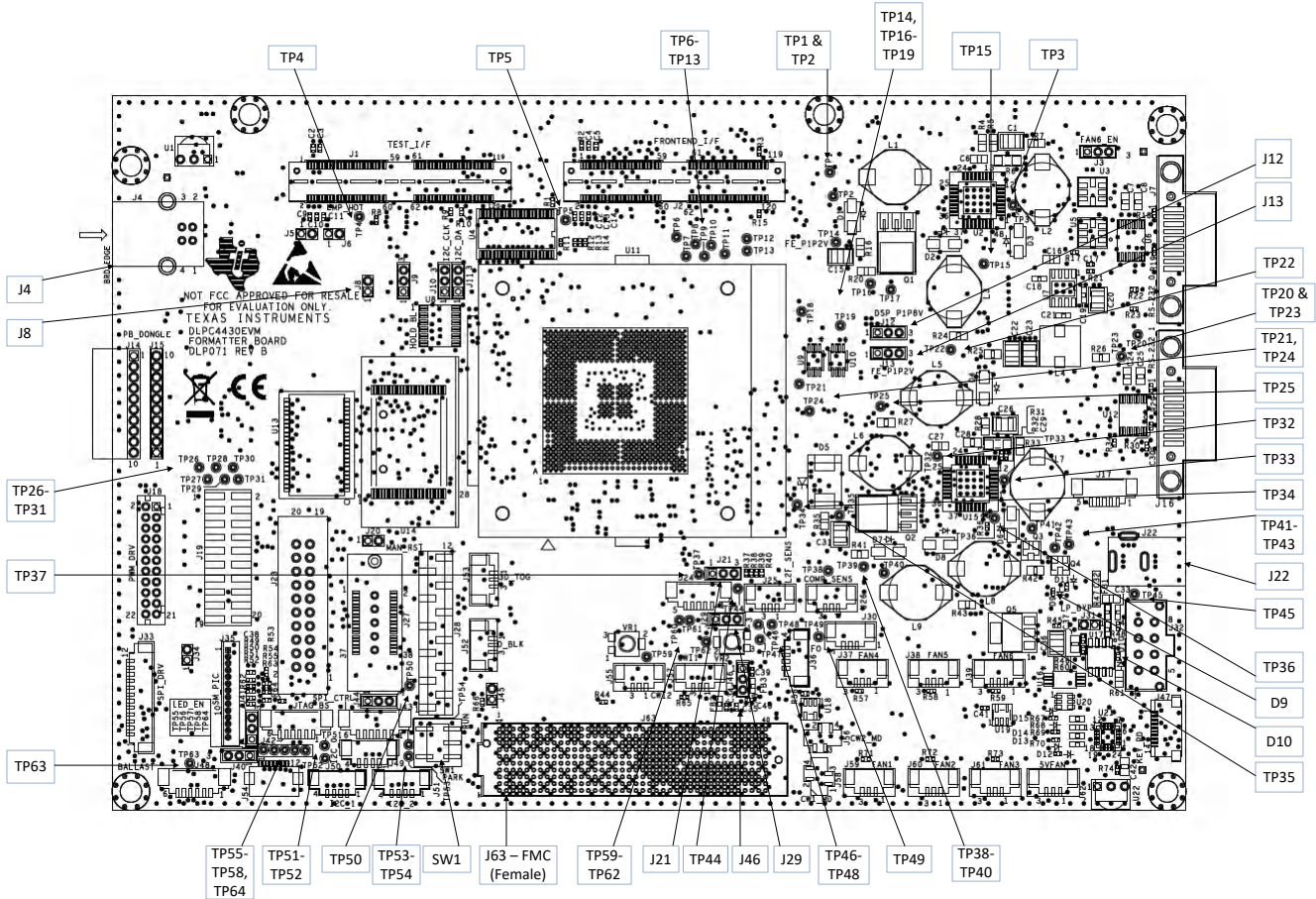


Figure 3-1. DLPC4430EVM Connectors (Top View)

3.1.1.1 DLPC4430EVM Connectors

Table 3-1. Connectors

Reference Designator	Description	Physical Connection Type
J1	Test_I/F	Connector
J2	Frontend_I/F	Connector
J3	Fan_5/6_Selection	Jumper selection
J4	Mini-USB	Cable
J5	Memory Bus Selection	Jumper (short)
J6	Lamp_state	Jumper (short)
J7	RS_232_0	Cable
J8	HOLD_BL	Jumper (short)
J9	Red LED enable or Lamp Ballast	Jumper selection
J10	Daughter Card I2C Clock	Jumper selection
J11	Daughter Card I2C Data	Jumper selection
J12	Front-end DSP Power	Jumper selection
J13	Front-end Power	Jumper selection
J14	Point Blank Dongle (Right Angle)	Header
J15	Point Blank Dongle	Header
J16	RS_232_1	Cable
J17	MSP430 Communication	Cable
J18	PWM SSI Driver I/F	Cable
J19	LED Test points	Header
J20	Manual Reset Jumper	Jumper (short)
J21	Controller Sensor selection	Jumper selection
J22	12 V Input	Power (Barrel)
J23	ASIC JTAG	Cable
J24	Point Blank/IR	Cable
J25	L2F_Sens	Cable
J26	Comp_Sens	Cable
J27	ARM Port	Cable
J28	Test point MUX	Header
J29	Controller Sensor selection (Continued)	Jumper selection
J30	AC Ballast	Cable
J31	Low-power Bypass	Jumper (short)
J32	Ext_Power	Cable
J33	SPI_DRV	Cable
J34	Lamp_Control	Jumper (short)
J35	SM_PIC	Cable
J36	Formatter Only I/F	Cable
J37	FAN #4	Cable
J38	FAN #5	Cable
J39	FAN #6	Cable
J40	Blue_LED_EN / Lamp Mode	Jumper selection
J41	LED_EN	Cable
J42	JTAG Boundary Scan	Cable

Table 3-1. Connectors (continued)

Reference Designator	Description	Physical Connection Type
J43	SSI SPI Control	Cable
J44	SSP2/LED_DIN	Jumper selection
J45	Bus_Mode	Jumper (short)
J46	DMD Current Selection	Cable
J47	Keyboard Interface	Cable
J48	L2F_Sens	Cable
J49	SSI SPI Control	Cable
J52	D_BLK	Cable
J53	3D_TOG	Cable
J54	ADC Integrating Sensor Board I/F	Cable
J55	Colorwheel #2 Index Sensor	Cable
J56	Colorwheel #2 motor drive	Cable
J57	Colorwheel #1 Index Sensor	Cable
J58	Colorwheel #1 motor drive	Cable
J59	FAN #1	Cable
J60	FAN #2	Cable
J61	FAN #3	Cable
J62	5 V FAN	Cable
J63	FMC Connector	CableBlue_LED_EN / Lamp Mode

3.1.1.2 DLPC4430EVM Test Points

Reference Designator	Description
TP1	ALF_HSYNC
TP2	ALF_VSYNC
TP3	CW_PWM2/SPD4
TP4	EXT_ARSTZ
TP5	HDMI_CEC
TP6	P_CLK1
TP7	P2_HSYNC
TP8	P_CLK2
TP9	P_DATAEN2
TP10	P2_HSYNC
TP11	P_CLK3
TP12	P1_VSYNC
TP13	P_DATAEN1
TP14	1.2V SWREG
TP15	MTR_ARSTZ
TP16	2.5V SWREG (PMD2)
TP17	1.8V SWREG (PMD2)
TP18	HDMI_INT
TP19	P2_VSYNC
TP20	3.3V REG (Low-power)
TP21	POINTBLANK_INDEX
TP22	LAMPCONTROL
TP23	3.3V (External)
TP24	ALF_HSYNC
TP25	5 V
TP26	SSP1_CLK
TP27	SSP1_DO
TP28	SSP1_DI
TP29	SSP1_CSZ0
TP30	PACKET_READY
TP31	PLUG_DETECT
TP32	1.8V REG
TP33	CW_PWM1
TP34	SSP0_CSZ3
TP35	1.1V SWREG
TP36	GND
TP37	SSP0_CSZ1
TP38	ADC_RST/COMP_PWM
TP39	2.5V SWREG
TP40	1.8V
TP41	SSP0_CSZ2
TP42	3.3V SWREG
TP43	12V_FIL
TP44	SSP0_CSZ0
TP45	12V_SOURCE
TP46	SSP0_CLK

Reference Designator	Description
TP47	DADSTRB
TP48	SSP0_TXD
TP49	SSP0_RXD
TP50	SSP2/LED_DIN
TP51	LED_DIR
TP52	LED_OE
TP53	LED_DOUT
TP54	LED_SCLK
TP55	ADC_RST/COMP_PWM
TP56	ADC_SCLK
TP57	ADC_SDIN
TP58	ADC_SDO
TP59	CW2_Potentiometer
TP60	CW_INDEX2
TP61	CW_INDEX1
TP62	CW1_Potentiometer
TP63	LAMPLITZ_FILTER
TP64	ADC_CSZ

3.1.2 DLP780NEEVM/DLP800REEVM Connections

Figure 3-2 depicts the switches and connectors with their respective locations.

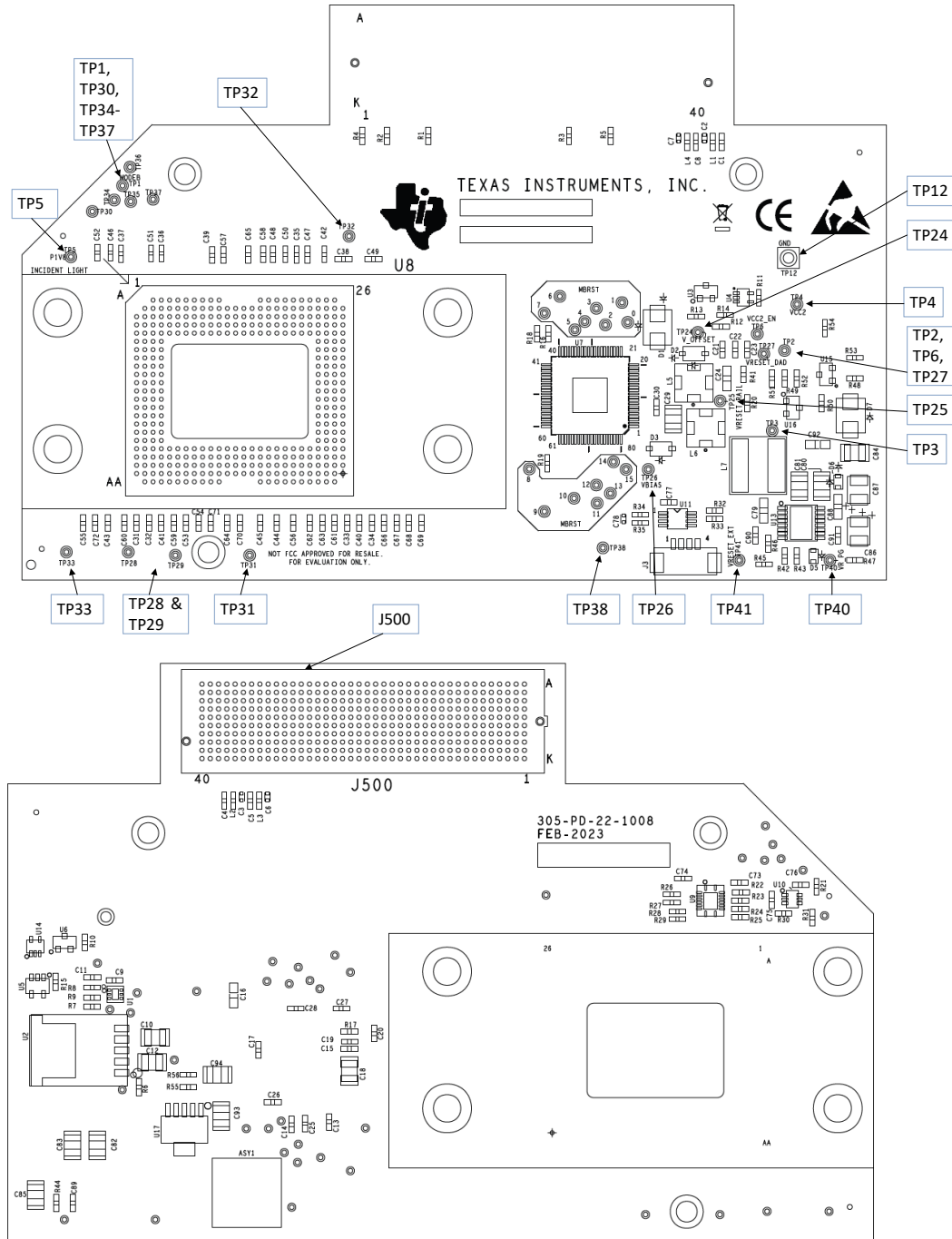


Figure 3-2. DLP780NEEVM/DLP800REEVM Test Points and Connectors

3.1.2.1 DLP780NEEVM/DLP800REEVM Connectors

Reference Designator	Description	Physical Connection Type
J3	I2C	Cable
J500	FMC Connector	Cable

3.1.2.2 DLP780NEEVM/DLP800REEVM Test Points

Reference Designator	Description
TP1	DMD Mode
TP2	DMD_P3V3
TP3	DMD_P3V3
TP4	VCC2
TP5	DMD_P1V8
TP6	VCC2_EN
TP7	MBRST15
TP8	MBRST14
TP9	MBRST13
TP10	MBRST12
TP11	MBRST11
TP12	GND
TP13	MBRST10
TP14	MBRST9
TP15	MBRST8
TP16	MBRST7
TP17	MBRST6
TP18	MBRST5
TP19	MBRST4
TP20	MBRST3
TP21	MBRST2
TP22	MBRST1
TP23	MBRST0
TP24	V_OFFSET
TP25	VRESET_RAIL
TP26	VBIAS
TP27	VRESET_DAD
TP30	PROG_FUSE_EN
TP33	SCP_TEST_MUX
TP37	TEMP_ALERT
TP38	THERMAL_FLAG
TP41	VRESET_EXT

3.1.3 DLP470NEEVM/DLP480REEVM Connections

Figure 3-3 depicts the switches and connectors with their respective locations.

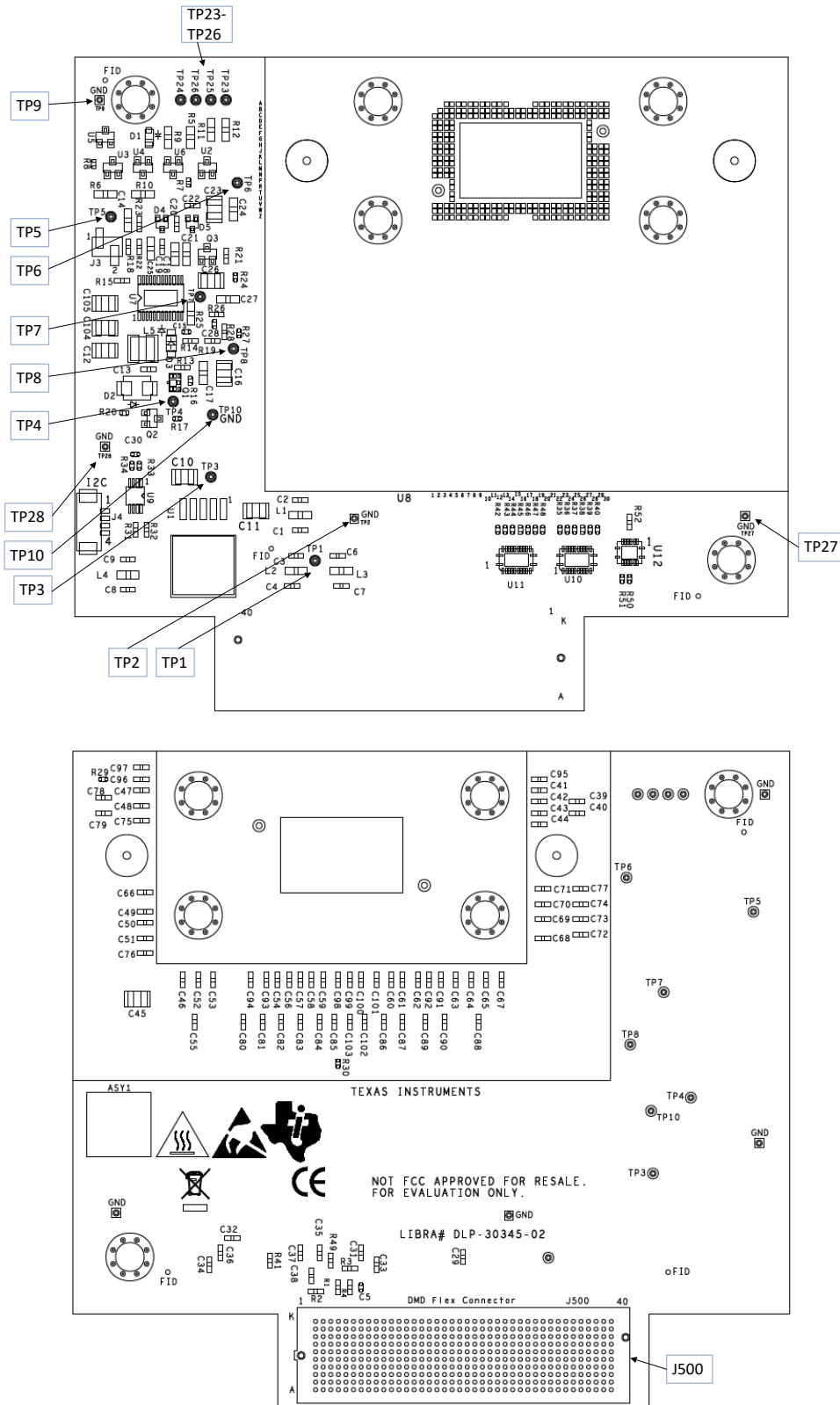


Figure 3-3. DLP470NEEVM/DLP480REEVM Test Points and Connectors

3.1.3.1 DLP470NEEVM/DLP480REEVM Connectors

Reference Designator	Description	Physical Connection Type
J4	I2C	Cable
J500	FMC Connector	Cable

3.1.3.2 DLP470NEEVM/DLP480REEVM Test Points

Reference Designator	Description
TP1	DMD_P3P3V
TP2	GND
TP3	DMD_P1P8V
TP4	VOFFSET
TP5	EN_OFFSET
TP6	VRESET
TP7	VBIAS
TP8	PG_OFFSET
TP9	GND
TP10	GND
TP23	BIST_A
TP24	BIST_B
TP25	BIST_C
TP26	BIST_D
TP27	GND
TP28	GND

3.1.4 DLP550HEEVM/DLP550JEEVM/DLP650LEEVM Connections

Figure 3-4 depicts the switches and connectors with their respective locations.

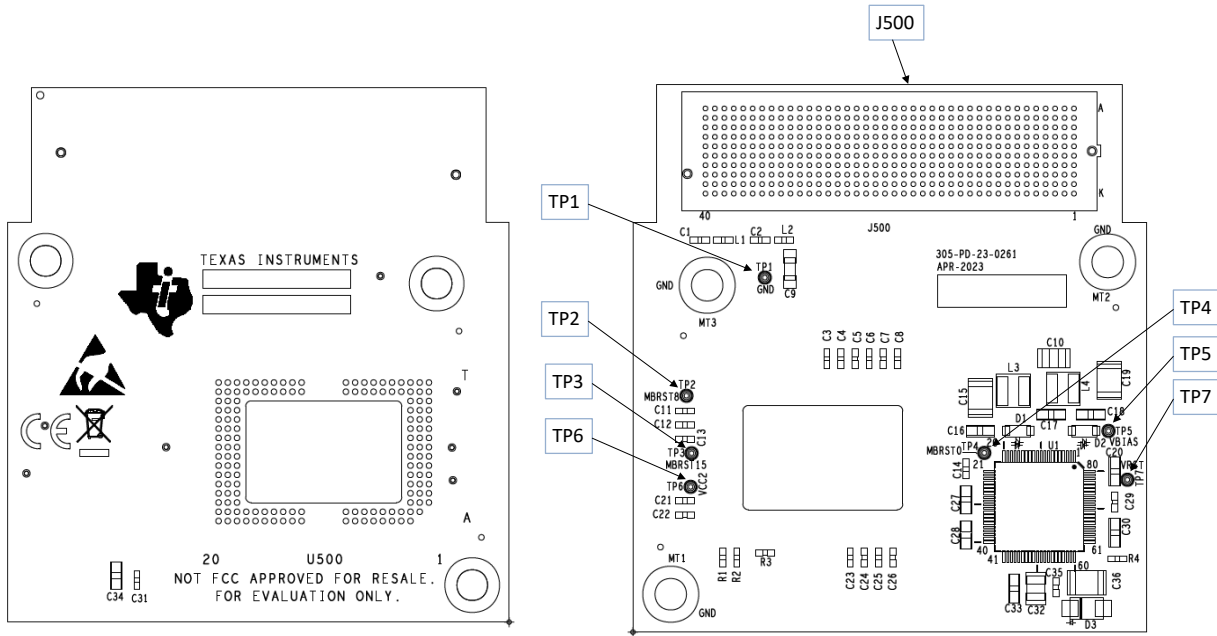


Figure 3-4. DLP550HEEVM/DLP550JE/DLP650LE Test Points and Connectors

3.1.4.1 DLP550HEEVM/DLP550JEEVM/DLP650LEEVM Connectors

Reference Designator	Description	Physical Connection Type
J500	FMC Connector	Cable

3.1.4.2 DLP550HEEVM/DLP550JEEVM/DLP650LEEVM Test Points

Reference Designator	Description
TP1	GND
TP2	MBRST8
TP3	MBRST15
TP4	MBRST0
TP5	VBIAS
TP6	VCC2
TP7	VRESET

3.1.5 DLP650NEEVM/DLP670REEVM Connections

Figure 3-5 depicts the switches and connectors with their respective locations.

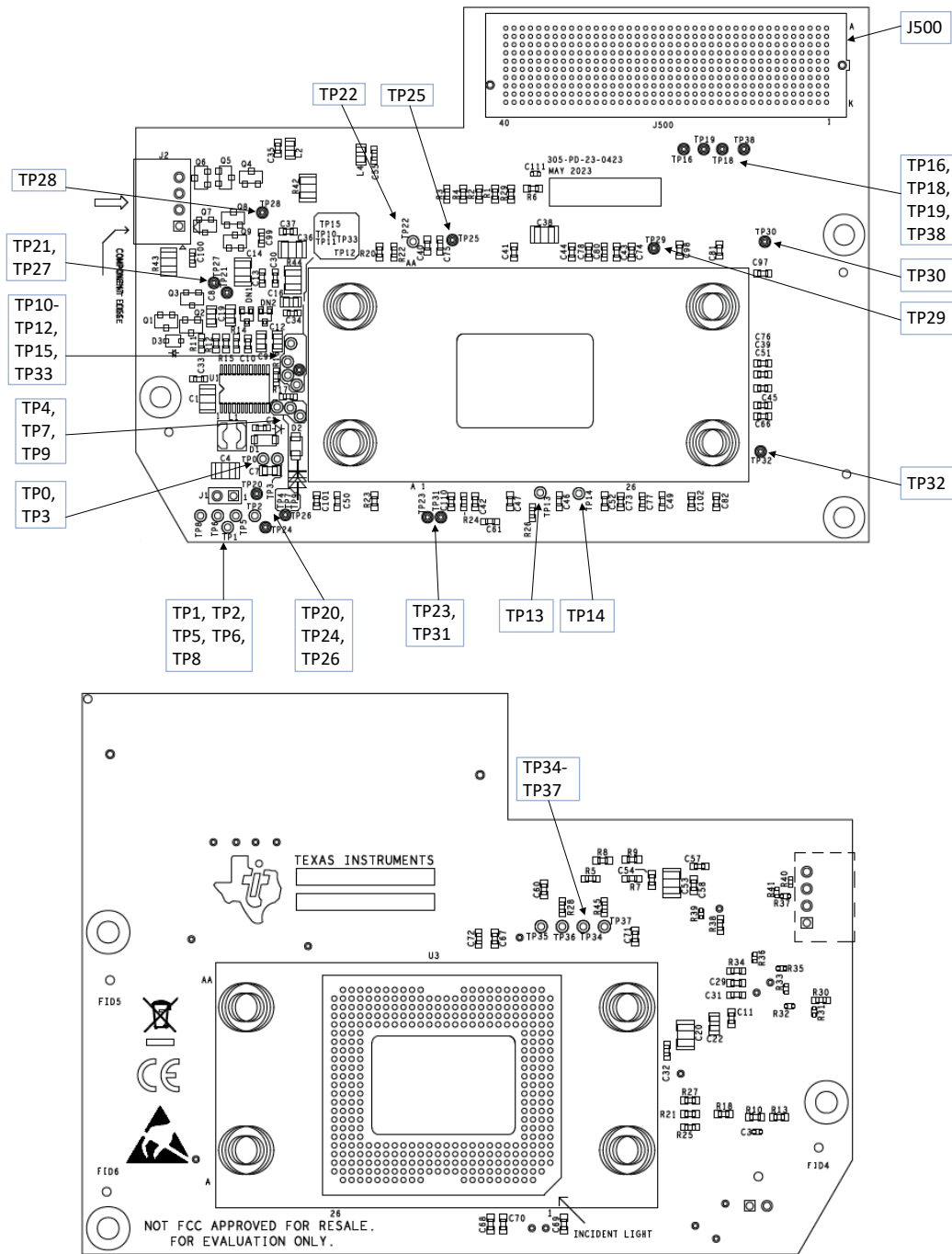


Figure 3-5. DLP650NEEVM/DLP670REEVM Test Points and Connectors

3.1.5.1 DLP650NEEVM/DLP670REEVM Connectors

Reference Designator	Description	Physical Connection Type
J1	3.3V to EN_OFFSET	Jumper (short)
J2	Power (Ext)	Cable (Unpopulated)
J500	FMC Connector	Cable

3.1.5.2 DLP650NEEVM/DLP670REEVM Test Points

Reference Designator	Description
TP[0:15]	MBRST[0:15]
TP16	DMDSPARE0
TP18	SSP_DAD2CSZ
TP19	SSP_DAD1CSZ
TP20	VOFFSET
TP21	VRESET
TP22	BIST_A
TP23	BIST_B
TP24	TEMP
TP25-TP32	GND
TP33	VBIAS
TP34	M_SSP1_CLK
TP35	M_SSP1_TXD
TP36	M_SSP1_CSZ0
TP37	M_SSP1_RXD
TP38	MODE_B

3.2 Power Supply Requirements

3.2.1 External Power Supply Requirements

The DLPC4430EVM does not include a power supply. The external power supply requirements are:

- Nominal voltage: 12-V DC -5%/+10%
- Maximum Output Current: 7 A
- DC connector size:
 - Inner diameter: 2.5 mm
 - Outer diameter: 5.5 mm
 - Shaft: 9.5-mm female, center positive
- Efficiency level: V
- A recommended power supply is
- [Digi-Key part number 993-1009-ND](#), or equivalent

Note

External Power Supply Regulatory Compliance Certifications: Recommend selection and use of an external power supply, which meets TI's required minimum electrical ratings in addition to complying with applicable regional product regulatory and safety certification requirements such as (by example) UL, CSA, VDE, CCC, PSE, and so forth.

4 Hardware Design Files

4.1 Schematics

Please see design files referenced in controller or associated DMD on the product page of [DLPC4430EVM](#).

4.2 PCB Layouts

Please see design files referenced in controller or associated DMD on the product page of [DLPC4430EVM](#).

4.3 Bill of Materials (BOM)

Please see design files referenced in controller or associated DMD on the product page of [DLPC4430EVM](#).


5 Additional Information

5.1 If You Need Assistance

Refer to the [DLP E2E Community support forums](#).

5.2 Caution Labels

CAUTION



The kit contains ESD-sensitive components.
Handle with care to prevent permanent damage.

WARNING



Eye or skin irritation can result from exposure. Use appropriate shielding. Do not look at the operating lamp. Eye injury can result.

Trademarks

HDMI™ is a trademark of HDMI Licensing LLC.

DLP® is a registered trademark of Texas Instruments.

All trademarks are the property of their respective owners.

The terms HDMI, HDMI High-Definition Multimedia Interface, HDMI trade dress, and the HDMI Logos are trademarks or registered trademarks of HDMI Licensing Administrator Inc.

6 Related Documentation

DLP550HE Data Sheet: DLP550HE Digital Micromirror Device (DMD), [DLPS238](#)
 DLP550JE Data Sheet: DLP550JE Digital Micromirror Device (DMD), [DLPS101](#)
 DLP650LE Data Sheet: DLP650LE Digital Micromirror Device (DMD), [DLPS095](#)
 DLP470NE Data Sheet: DLP470NE Digital Micromirror Device (DMD), [DLPS159](#)
 DLP480RE Data Sheet: DLP480RE Digital Micromirror Device (DMD), [DLPS160](#)
 DLP650NE Data Sheet: DLP650NE Digital Micromirror Device (DMD), [DLPS097](#)
 DLP670RE Data Sheet: DLP670RE Digital Micromirror Device (DMD), [DLPS241](#)
 DLP780NE Data Sheet: DLP780NE Digital Micromirror Device (DMD), [DLPS188](#)
 DLP800RE Data Sheet: DLP800RE Digital Micromirror Device (DMD), [DLPS209](#)
 DLPC4430 Data Sheet: DLPC4430 DLP Display Controller, [DLPS036](#)
 DLPA100 Data Sheet: DLPA100 Power Management and Motor Driver, [DLPS040](#)
 DLPA200 Data Sheet: DLPA200 DLP DMD Driver, [DLPS015](#)
 DLPA300 Data Sheet: DLPA300 DLP HEP DMD Driver, [DLPS227](#)
 TPS65145 Data Sheet: TPS65145 Triple Output LCD Supply with Linear Regulator and Power, [DLPS053](#)

7 Revision History

NOTE: Page numbers for previous revisions may differ from page numbers in the current version.

Changes from December 31, 2023 to October 31, 2025 (from Revision * (December 2023) to Revision A (October 2025))

	Page
• Added HDMI trademark information.....	1

STANDARD TERMS FOR EVALUATION MODULES

1. *Delivery:* TI delivers TI evaluation boards, kits, or modules, including any accompanying demonstration software, components, and/or documentation which may be provided together or separately (collectively, an "EVM" or "EVMs") to the User ("User") in accordance with the terms set forth herein. User's acceptance of the EVM is expressly subject to the following terms.
 - 1.1 EVMs are intended solely for product or software developers for use in a research and development setting to facilitate feasibility evaluation, experimentation, or scientific analysis of TI semiconductor products. EVMs have no direct function and are not finished products. EVMs shall not be directly or indirectly assembled as a part or subassembly in any finished product. For clarification, any software or software tools provided with the EVM ("Software") shall not be subject to the terms and conditions set forth herein but rather shall be subject to the applicable terms that accompany such Software
 - 1.2 EVMs are not intended for consumer or household use. EVMs may not be sold, sublicensed, leased, rented, loaned, assigned, or otherwise distributed for commercial purposes by Users, in whole or in part, or used in any finished product or production system.
2. *Limited Warranty and Related Remedies/Disclaimers:*
 - 2.1 These terms do not apply to Software. The warranty, if any, for Software is covered in the applicable Software License Agreement.
 - 2.2 TI warrants that the TI EVM will conform to TI's published specifications for ninety (90) days after the date TI delivers such EVM to User. Notwithstanding the foregoing, TI shall not be liable for a nonconforming EVM if (a) the nonconformity was caused by neglect, misuse or mistreatment by an entity other than TI, including improper installation or testing, or for any EVMs that have been altered or modified in any way by an entity other than TI, (b) the nonconformity resulted from User's design, specifications or instructions for such EVMs or improper system design, or (c) User has not paid on time. Testing and other quality control techniques are used to the extent TI deems necessary. TI does not test all parameters of each EVM. User's claims against TI under this Section 2 are void if User fails to notify TI of any apparent defects in the EVMs within ten (10) business days after delivery, or of any hidden defects with ten (10) business days after the defect has been detected.
 - 2.3 TI's sole liability shall be at its option to repair or replace EVMs that fail to conform to the warranty set forth above, or credit User's account for such EVM. TI's liability under this warranty shall be limited to EVMs that are returned during the warranty period to the address designated by TI and that are determined by TI not to conform to such warranty. If TI elects to repair or replace such EVM, TI shall have a reasonable time to repair such EVM or provide replacements. Repaired EVMs shall be warranted for the remainder of the original warranty period. Replaced EVMs shall be warranted for a new full ninety (90) day warranty period.

WARNING

Evaluation Kits are intended solely for use by technically qualified, professional electronics experts who are familiar with the dangers and application risks associated with handling electrical mechanical components, systems, and subsystems.

User shall operate the Evaluation Kit within TI's recommended guidelines and any applicable legal or environmental requirements as well as reasonable and customary safeguards. Failure to set up and/or operate the Evaluation Kit within TI's recommended guidelines may result in personal injury or death or property damage. Proper set up entails following TI's instructions for electrical ratings of interface circuits such as input, output and electrical loads.

NOTE:

EXPOSURE TO ELECTROSTATIC DISCHARGE (ESD) MAY CAUSE DEGRADATION OR FAILURE OF THE EVALUATION KIT; TI RECOMMENDS STORAGE OF THE EVALUATION KIT IN A PROTECTIVE ESD BAG.

3 Regulatory Notices:

3.1 United States

3.1.1 Notice applicable to EVMs not FCC-Approved:

FCC NOTICE: This kit is designed to allow product developers to evaluate electronic components, circuitry, or software associated with the kit to determine whether to incorporate such items in a finished product and software developers to write software applications for use with the end product. This kit is not a finished product and when assembled may not be resold or otherwise marketed unless all required FCC equipment authorizations are first obtained. Operation is subject to the condition that this product not cause harmful interference to licensed radio stations and that this product accept harmful interference. Unless the assembled kit is designed to operate under part 15, part 18 or part 95 of this chapter, the operator of the kit must operate under the authority of an FCC license holder or must secure an experimental authorization under part 5 of this chapter.

3.1.2 For EVMs annotated as FCC – FEDERAL COMMUNICATIONS COMMISSION Part 15 Compliant:

CAUTION

This device complies with part 15 of the FCC Rules. Operation is subject to the following two conditions: (1) This device may not cause harmful interference, and (2) this device must accept any interference received, including interference that may cause undesired operation.

Changes or modifications not expressly approved by the party responsible for compliance could void the user's authority to operate the equipment.

FCC Interference Statement for Class A EVM devices

NOTE: This equipment has been tested and found to comply with the limits for a Class A digital device, pursuant to part 15 of the FCC Rules. These limits are designed to provide reasonable protection against harmful interference when the equipment is operated in a commercial environment. This equipment generates, uses, and can radiate radio frequency energy and, if not installed and used in accordance with the instruction manual, may cause harmful interference to radio communications. Operation of this equipment in a residential area is likely to cause harmful interference in which case the user will be required to correct the interference at his own expense.

FCC Interference Statement for Class B EVM devices

NOTE: This equipment has been tested and found to comply with the limits for a Class B digital device, pursuant to part 15 of the FCC Rules. These limits are designed to provide reasonable protection against harmful interference in a residential installation. This equipment generates, uses and can radiate radio frequency energy and, if not installed and used in accordance with the instructions, may cause harmful interference to radio communications. However, there is no guarantee that interference will not occur in a particular installation. If this equipment does cause harmful interference to radio or television reception, which can be determined by turning the equipment off and on, the user is encouraged to try to correct the interference by one or more of the following measures:

- Reorient or relocate the receiving antenna.
- Increase the separation between the equipment and receiver.
- Connect the equipment into an outlet on a circuit different from that to which the receiver is connected.
- Consult the dealer or an experienced radio/TV technician for help.

3.2 Canada

3.2.1 For EVMs issued with an Industry Canada Certificate of Conformance to RSS-210 or RSS-247

Concerning EVMs Including Radio Transmitters:

This device complies with Industry Canada license-exempt RSSs. Operation is subject to the following two conditions:

(1) this device may not cause interference, and (2) this device must accept any interference, including interference that may cause undesired operation of the device.

Concernant les EVMs avec appareils radio:

Le présent appareil est conforme aux CNR d'Industrie Canada applicables aux appareils radio exempts de licence. L'exploitation est autorisée aux deux conditions suivantes: (1) l'appareil ne doit pas produire de brouillage, et (2) l'utilisateur de l'appareil doit accepter tout brouillage radioélectrique subi, même si le brouillage est susceptible d'en compromettre le fonctionnement.

Concerning EVMs Including Detachable Antennas:

Under Industry Canada regulations, this radio transmitter may only operate using an antenna of a type and maximum (or lesser) gain approved for the transmitter by Industry Canada. To reduce potential radio interference to other users, the antenna type and its gain should be so chosen that the equivalent isotropically radiated power (e.i.r.p.) is not more than that necessary for successful communication. This radio transmitter has been approved by Industry Canada to operate with the antenna types listed in the user guide with the maximum permissible gain and required antenna impedance for each antenna type indicated. Antenna types not included in this list, having a gain greater than the maximum gain indicated for that type, are strictly prohibited for use with this device.

Concernant les EVMs avec antennes détachables

Conformément à la réglementation d'Industrie Canada, le présent émetteur radio peut fonctionner avec une antenne d'un type et d'un gain maximal (ou inférieur) approuvé pour l'émetteur par Industrie Canada. Dans le but de réduire les risques de brouillage radioélectrique à l'intention des autres utilisateurs, il faut choisir le type d'antenne et son gain de sorte que la puissance isotrope rayonnée équivalente (p.i.r.e.) ne dépasse pas l'intensité nécessaire à l'établissement d'une communication satisfaisante. Le présent émetteur radio a été approuvé par Industrie Canada pour fonctionner avec les types d'antenne énumérés dans le manuel d'usage et ayant un gain admissible maximal et l'impédance requise pour chaque type d'antenne. Les types d'antenne non inclus dans cette liste, ou dont le gain est supérieur au gain maximal indiqué, sont strictement interdits pour l'exploitation de l'émetteur.

3.3 Japan

3.3.1 *Notice for EVMs delivered in Japan:* Please see http://www.tij.co.jp/lstds/ti_ja/general/eStore/notice_01.page 日本国内に輸入される評価用キット、ボードについては、次のところをご覧ください。

<https://www.ti.com/ja-jp/legal/notice-for-evaluation-kits-delivered-in-japan.html>

3.3.2 *Notice for Users of EVMs Considered "Radio Frequency Products" in Japan:* EVMs entering Japan may not be certified by TI as conforming to Technical Regulations of Radio Law of Japan.

If User uses EVMs in Japan, not certified to Technical Regulations of Radio Law of Japan, User is required to follow the instructions set forth by Radio Law of Japan, which includes, but is not limited to, the instructions below with respect to EVMs (which for the avoidance of doubt are stated strictly for convenience and should be verified by User):

1. Use EVMs in a shielded room or any other test facility as defined in the notification #173 issued by Ministry of Internal Affairs and Communications on March 28, 2006, based on Sub-section 1.1 of Article 6 of the Ministry's Rule for Enforcement of Radio Law of Japan,
2. Use EVMs only after User obtains the license of Test Radio Station as provided in Radio Law of Japan with respect to EVMs, or
3. Use of EVMs only after User obtains the Technical Regulations Conformity Certification as provided in Radio Law of Japan with respect to EVMs. Also, do not transfer EVMs, unless User gives the same notice above to the transferee. Please note that if User does not follow the instructions above, User will be subject to penalties of Radio Law of Japan.

【無線電波を送信する製品の開発キットをお使いになる際の注意事項】 開発キットの中には技術基準適合証明を受けていないものがあります。技術適合証明を受けていないものご使用に際しては、電波法遵守のため、以下のいずれかの措置を取っていただく必要がありますのでご注意ください。

1. 電波法施行規則第6条第1項第1号に基づく平成18年3月28日総務省告示第173号で定められた電波暗室等の試験設備でご使用いただく。
2. 実験局の免許を取得後ご使用いただく。
3. 技術基準適合証明を取得後ご使用いただく。

なお、本製品は、上記の「ご使用にあたっての注意」を譲渡先、移転先に通知しない限り、譲渡、移転できないものとします。

上記を遵守頂けない場合は、電波法の罰則が適用される可能性があることをご留意ください。日本テキサス・イ

ンスツルメンツ株式会社

東京都新宿区西新宿 6 丁目 2 4 番 1 号

西新宿三井ビル

3.3.3 *Notice for EVMs for Power Line Communication:* Please see http://www.tij.co.jp/lstds/ti_ja/general/eStore/notice_02.page

電力線搬送波通信についての開発キットをお使いになる際の注意事項については、次のところをご覧ください。 <https://www.ti.com/ja-jp/legal/notice-for-evaluation-kits-for-power-line-communication.html>

3.4 European Union

3.4.1 *For EVMs subject to EU Directive 2014/30/EU (Electromagnetic Compatibility Directive):*

This is a class A product intended for use in environments other than domestic environments that are connected to a low-voltage power-supply network that supplies buildings used for domestic purposes. In a domestic environment this product may cause radio interference in which case the user may be required to take adequate measures.

-
- 4 *EVM Use Restrictions and Warnings:*
 - 4.1 EVMS ARE NOT FOR USE IN FUNCTIONAL SAFETY AND/OR SAFETY CRITICAL EVALUATIONS, INCLUDING BUT NOT LIMITED TO EVALUATIONS OF LIFE SUPPORT APPLICATIONS.
 - 4.2 User must read and apply the user guide and other available documentation provided by TI regarding the EVM prior to handling or using the EVM, including without limitation any warning or restriction notices. The notices contain important safety information related to, for example, temperatures and voltages.
 - 4.3 *Safety-Related Warnings and Restrictions:*
 - 4.3.1 User shall operate the EVM within TI's recommended specifications and environmental considerations stated in the user guide, other available documentation provided by TI, and any other applicable requirements and employ reasonable and customary safeguards. Exceeding the specified performance ratings and specifications (including but not limited to input and output voltage, current, power, and environmental ranges) for the EVM may cause personal injury or death, or property damage. If there are questions concerning performance ratings and specifications, User should contact a TI field representative prior to connecting interface electronics including input power and intended loads. Any loads applied outside of the specified output range may also result in unintended and/or inaccurate operation and/or possible permanent damage to the EVM and/or interface electronics. Please consult the EVM user guide prior to connecting any load to the EVM output. If there is uncertainty as to the load specification, please contact a TI field representative. During normal operation, even with the inputs and outputs kept within the specified allowable ranges, some circuit components may have elevated case temperatures. These components include but are not limited to linear regulators, switching transistors, pass transistors, current sense resistors, and heat sinks, which can be identified using the information in the associated documentation. When working with the EVM, please be aware that the EVM may become very warm.
 - 4.3.2 EVMs are intended solely for use by technically qualified, professional electronics experts who are familiar with the dangers and application risks associated with handling electrical mechanical components, systems, and subsystems. User assumes all responsibility and liability for proper and safe handling and use of the EVM by User or its employees, affiliates, contractors or designees. User assumes all responsibility and liability to ensure that any interfaces (electronic and/or mechanical) between the EVM and any human body are designed with suitable isolation and means to safely limit accessible leakage currents to minimize the risk of electrical shock hazard. User assumes all responsibility and liability for any improper or unsafe handling or use of the EVM by User or its employees, affiliates, contractors or designees.
 - 4.4 User assumes all responsibility and liability to determine whether the EVM is subject to any applicable international, federal, state, or local laws and regulations related to User's handling and use of the EVM and, if applicable, User assumes all responsibility and liability for compliance in all respects with such laws and regulations. User assumes all responsibility and liability for proper disposal and recycling of the EVM consistent with all applicable international, federal, state, and local requirements.
 5. *Accuracy of Information:* To the extent TI provides information on the availability and function of EVMs, TI attempts to be as accurate as possible. However, TI does not warrant the accuracy of EVM descriptions, EVM availability or other information on its websites as accurate, complete, reliable, current, or error-free.
 6. *Disclaimers:*
 - 6.1 EXCEPT AS SET FORTH ABOVE, EVMS AND ANY MATERIALS PROVIDED WITH THE EVM (INCLUDING, BUT NOT LIMITED TO, REFERENCE DESIGNS AND THE DESIGN OF THE EVM ITSELF) ARE PROVIDED "AS IS" AND "WITH ALL FAULTS." TI DISCLAIMS ALL OTHER WARRANTIES, EXPRESS OR IMPLIED, REGARDING SUCH ITEMS, INCLUDING BUT NOT LIMITED TO ANY EPIDEMIC FAILURE WARRANTY OR IMPLIED WARRANTIES OF MERCHANTABILITY OR FITNESS FOR A PARTICULAR PURPOSE OR NON-INFRINGEMENT OF ANY THIRD PARTY PATENTS, COPYRIGHTS, TRADE SECRETS OR OTHER INTELLECTUAL PROPERTY RIGHTS.
 - 6.2 EXCEPT FOR THE LIMITED RIGHT TO USE THE EVM SET FORTH HEREIN, NOTHING IN THESE TERMS SHALL BE CONSTRUED AS GRANTING OR CONFERRING ANY RIGHTS BY LICENSE, PATENT, OR ANY OTHER INDUSTRIAL OR INTELLECTUAL PROPERTY RIGHT OF TI, ITS SUPPLIERS/LICENSORS OR ANY OTHER THIRD PARTY, TO USE THE EVM IN ANY FINISHED END-USER OR READY-TO-USE FINAL PRODUCT, OR FOR ANY INVENTION, DISCOVERY OR IMPROVEMENT, REGARDLESS OF WHEN MADE, CONCEIVED OR ACQUIRED.
 7. *USER'S INDEMNITY OBLIGATIONS AND REPRESENTATIONS.* USER WILL DEFEND, INDEMNIFY AND HOLD TI, ITS LICENSORS AND THEIR REPRESENTATIVES HARMLESS FROM AND AGAINST ANY AND ALL CLAIMS, DAMAGES, LOSSES, EXPENSES, COSTS AND LIABILITIES (COLLECTIVELY, "CLAIMS") ARISING OUT OF OR IN CONNECTION WITH ANY HANDLING OR USE OF THE EVM THAT IS NOT IN ACCORDANCE WITH THESE TERMS. THIS OBLIGATION SHALL APPLY WHETHER CLAIMS ARISE UNDER STATUTE, REGULATION, OR THE LAW OF TORT, CONTRACT OR ANY OTHER LEGAL THEORY, AND EVEN IF THE EVM FAILS TO PERFORM AS DESCRIBED OR EXPECTED.
-

8. *Limitations on Damages and Liability:*

8.1 *General Limitations.* IN NO EVENT SHALL TI BE LIABLE FOR ANY SPECIAL, COLLATERAL, INDIRECT, PUNITIVE, INCIDENTAL, CONSEQUENTIAL, OR EXEMPLARY DAMAGES IN CONNECTION WITH OR ARISING OUT OF THESE TERMS OR THE USE OF THE EVMS , REGARDLESS OF WHETHER TI HAS BEEN ADVISED OF THE POSSIBILITY OF SUCH DAMAGES. EXCLUDED DAMAGES INCLUDE, BUT ARE NOT LIMITED TO, COST OF REMOVAL OR REINSTALLATION, ANCILLARY COSTS TO THE PROCUREMENT OF SUBSTITUTE GOODS OR SERVICES, RETESTING, OUTSIDE COMPUTER TIME, LABOR COSTS, LOSS OF GOODWILL, LOSS OF PROFITS, LOSS OF SAVINGS, LOSS OF USE, LOSS OF DATA, OR BUSINESS INTERRUPTION. NO CLAIM, SUIT OR ACTION SHALL BE BROUGHT AGAINST TI MORE THAN TWELVE (12) MONTHS AFTER THE EVENT THAT GAVE RISE TO THE CAUSE OF ACTION HAS OCCURRED.

8.2 *Specific Limitations.* IN NO EVENT SHALL TI'S AGGREGATE LIABILITY FROM ANY USE OF AN EVM PROVIDED HEREUNDER, INCLUDING FROM ANY WARRANTY, INDEMNITY OR OTHER OBLIGATION ARISING OUT OF OR IN CONNECTION WITH THESE TERMS, , EXCEED THE TOTAL AMOUNT PAID TO TI BY USER FOR THE PARTICULAR EVM(S) AT ISSUE DURING THE PRIOR TWELVE (12) MONTHS WITH RESPECT TO WHICH LOSSES OR DAMAGES ARE CLAIMED. THE EXISTENCE OF MORE THAN ONE CLAIM SHALL NOT ENLARGE OR EXTEND THIS LIMIT.

9. *Return Policy.* Except as otherwise provided, TI does not offer any refunds, returns, or exchanges. Furthermore, no return of EVM(s) will be accepted if the package has been opened and no return of the EVM(s) will be accepted if they are damaged or otherwise not in a resalable condition. If User feels it has been incorrectly charged for the EVM(s) it ordered or that delivery violates the applicable order, User should contact TI. All refunds will be made in full within thirty (30) working days from the return of the components(s), excluding any postage or packaging costs.

10. *Governing Law:* These terms and conditions shall be governed by and interpreted in accordance with the laws of the State of Texas, without reference to conflict-of-laws principles. User agrees that non-exclusive jurisdiction for any dispute arising out of or relating to these terms and conditions lies within courts located in the State of Texas and consents to venue in Dallas County, Texas. Notwithstanding the foregoing, any judgment may be enforced in any United States or foreign court, and TI may seek injunctive relief in any United States or foreign court.

Mailing Address: Texas Instruments, Post Office Box 655303, Dallas, Texas 75265
Copyright © 2023, Texas Instruments Incorporated

IMPORTANT NOTICE AND DISCLAIMER

TI PROVIDES TECHNICAL AND RELIABILITY DATA (INCLUDING DATASHEETS), DESIGN RESOURCES (INCLUDING REFERENCE DESIGNS), APPLICATION OR OTHER DESIGN ADVICE, WEB TOOLS, SAFETY INFORMATION, AND OTHER RESOURCES "AS IS" AND WITH ALL FAULTS, AND DISCLAIMS ALL WARRANTIES, EXPRESS AND IMPLIED, INCLUDING WITHOUT LIMITATION ANY IMPLIED WARRANTIES OF MERCHANTABILITY, FITNESS FOR A PARTICULAR PURPOSE OR NON-INFRINGEMENT OF THIRD PARTY INTELLECTUAL PROPERTY RIGHTS.

These resources are intended for skilled developers designing with TI products. You are solely responsible for (1) selecting the appropriate TI products for your application, (2) designing, validating and testing your application, and (3) ensuring your application meets applicable standards, and any other safety, security, regulatory or other requirements.

These resources are subject to change without notice. TI grants you permission to use these resources only for development of an application that uses the TI products described in the resource. Other reproduction and display of these resources is prohibited. No license is granted to any other TI intellectual property right or to any third party intellectual property right. TI disclaims responsibility for, and you fully indemnify TI and its representatives against any claims, damages, costs, losses, and liabilities arising out of your use of these resources.

TI's products are provided subject to [TI's Terms of Sale](#), [TI's General Quality Guidelines](#), or other applicable terms available either on [ti.com](#) or provided in conjunction with such TI products. TI's provision of these resources does not expand or otherwise alter TI's applicable warranties or warranty disclaimers for TI products. Unless TI explicitly designates a product as custom or customer-specified, TI products are standard, catalog, general purpose devices.

TI objects to and rejects any additional or different terms you may propose.

Copyright © 2025, Texas Instruments Incorporated

Last updated 10/2025