

**TPS549B22 1.5V to 18V V_{IN} , 4.5V to 22V V_{DD} , 25A SWIFT™
Step-Down Converter With Full Differential Sense and PMBus®**

1 Features

- Input voltage (PV_{IN}): 1.5V to 18V
- Input bias voltage (V_{DD}) range: 4.5V to 22V
- Output voltage range: 0.6V to 5.5V
- Integrated, 4.1mΩ and 1.9mΩ power MOSFETs with 25A continuous output current
- Voltage reference 0.6V to 1.2V in 50mV steps using VSEL pin
- ±0.5%, 0.9V_{REF} tolerance range: -40°C to +125°C junction temperature
- True differential remote sense amplifier
- D-CAP3™ control mode
- Adaptive on-time control with 8 PMBus® frequencies: 315kHz, 425kHz, 550kHz, 650kHz, 825kHz, 900kHz, 1.025MHz, 1.125MHz
- Temperature compensated and programmable current limit with R_{ILIM} and OC clamp
- Choice of hiccup or latch-off OVP or UVP
- V_{DD} UVLO External Adjustment by Precision EN
- Prebias start-up support
- Eco-mode and FCCM selectable
- Full suite of fault protection and PGOOD
- Standard VOUT_COMMAND and VOUT_MARGIN (HIGH and LOW)
- Pin-strapping and on-the-fly programming
- Fault reporting and warning
- NVM backup for selected commands
- 1MHz PMBus with PEC and SMB_ALERT#
- Create a custom design using the TPS549B22 with the [WEBENCH® Power Designer](#)

2 Applications

- Enterprise storage, SSD, NAS
- Wireless and wired communication infrastructure
- Industrial PCs, automation, ATE, PLC, video surveillance
- Enterprise server, switches, routers
- ASIC. SoC. FPGA. DSP Core and I/O Rails

3 Description

The TPS549B22 device is a compact single buck converter with adaptive on-time, D-CAP3 control mode. The device is designed for high accuracy, high efficiency, fast transient response, ease-of-use, low external component count and space-conscious power systems.

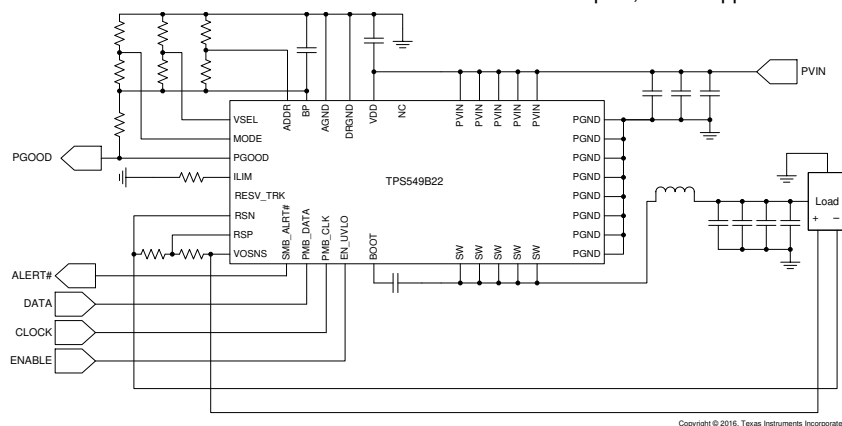
This device features full differential sense and TI integrated FETs with a high-side on-resistance of 4.1mΩ and a low-side on-resistance of 1.9mΩ. The device also features an accurate 0.5%, 0.9V reference with an ambient temperature range between -40°C and +125°C. Competitive features include: very low external component count, accurate load regulation and line regulation, auto-skip or FCCM mode operation, and internal soft-start control.

The TPS549B22 device is available in 7mm × 5mm, 40-pin, LQFN-CLIP (RVF) package (RoHs exempt).

Package Information

| PART NUMBER | PACKAGE ⁽¹⁾ | PACKAGE SIZE ⁽²⁾ |
|-------------|------------------------|-----------------------------|
| TPS549B22 | RVF (LQFN-CLIP, 40) | 7.00mm × 5.00mm |

- (1) For more information, see [Section 11](#).
- (2) The package size (length × width) is a nominal value and includes pins, where applicable.



Simplified Application

Table of Contents

| | | | |
|--|-----------|--|-----------|
| 1 Features | 1 | 7.12 STATUS_BYTE (address = 78h)..... | 35 |
| 2 Applications | 1 | 7.13 STATUS_WORD (High Byte) (address = 79h)..... | 36 |
| 3 Description | 1 | 7.14 STATUS_VOUT (address = 7Ah)..... | 37 |
| 4 Pin Configuration and Functions | 3 | 7.15 STATUS_IOUT (address = 7Bh)..... | 37 |
| 5 Specifications | 5 | 7.16 STATUS_CML (address = 7Eh)..... | 38 |
| 5.1 Absolute Maximum Ratings..... | 5 | 7.17 MFR_SPECIFIC_00 (address = D0h)..... | 38 |
| 5.2 ESD Ratings..... | 5 | 7.18 MFR_SPECIFIC_01 (address = D1h)..... | 39 |
| 5.3 Recommended Operating Conditions..... | 6 | 7.19 MFR_SPECIFIC_02 (address = D2h)..... | 40 |
| 5.4 Thermal Information..... | 6 | 7.20 MFR_SPECIFIC_03 (address = D3h)..... | 41 |
| 5.5 Electrical Characteristics..... | 6 | 7.21 MFR_SPECIFIC_04 (address = D4h)..... | 42 |
| 5.6 Typical Characteristics..... | 11 | 7.22 MFR_SPECIFIC_06 (address = D6h)..... | 43 |
| 6 Detailed Description | 16 | 7.23 MFR_SPECIFIC_07 (address = D7h)..... | 44 |
| 6.1 Overview..... | 16 | 7.24 MFR_SPECIFIC_44 (address = FCh)..... | 45 |
| 6.2 Functional Block Diagram..... | 17 | 8 Application and Implementation | 46 |
| 6.3 Feature Description..... | 17 | 8.1 Application Information..... | 46 |
| 6.4 Device Functional Modes..... | 20 | 8.2 Typical Applications..... | 47 |
| 6.5 Programming..... | 21 | 8.3 Power Supply Recommendations..... | 56 |
| 7 Register Maps | 31 | 8.4 Layout..... | 57 |
| 7.1 OPERATION Register (address = 1h)..... | 31 | 9 Device and Documentation Support | 61 |
| 7.2 ON_OFF_CONFIG Register (address = 2h)..... | 31 | 9.1 Device Support..... | 61 |
| 7.3 CLEAR_FAULTS (address = 3h)..... | 31 | 9.2 Documentation Support..... | 61 |
| 7.4 WRITE_PROTECT (address = 10h)..... | 33 | 9.3 Receiving Notification of Documentation Updates.... | 61 |
| 7.5 STORE_DEFAULT_ALL (address = 11h)..... | 33 | 9.4 Support Resources..... | 61 |
| 7.6 RESTORE_DEFAULT_ALL (address = 12h)..... | 33 | 9.5 Trademarks..... | 61 |
| 7.7 CAPABILITY (address = 19h)..... | 33 | 9.6 Electrostatic Discharge Caution..... | 61 |
| 7.8 VOUT_MODE (address = 20h)..... | 34 | 9.7 Glossary..... | 61 |
| 7.9 VOUT_COMMAND (address = 21h)..... | 34 | 10 Revision History | 62 |
| 7.10 VOUT_MARGIN_HIGH (address = 25h) ®..... | 34 | 11 Mechanical, Packaging, and Orderable Information | 62 |
| 7.11 VOUT_MARGIN_LOW (address = 26h)..... | 35 | | |

4 Pin Configuration and Functions

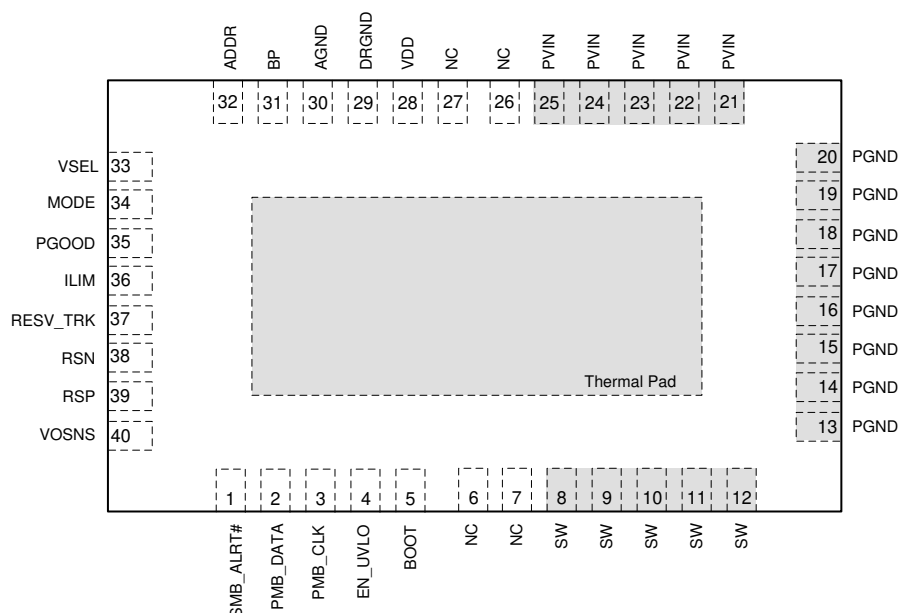


Figure 4-1. RVF Package 40-Pin LQFN-CLIP With Thermal Pad Top View

Table 4-1. Pin Functions

| PIN | | TYPE ⁽¹⁾ | DESCRIPTION |
|------------|--------------------------------|---------------------|---|
| NAME | NO. | | |
| ADDR | 32 | I | Program device address and SKIP or FCCM mode. |
| AGND | 30 | G | Ground pin for internal analog circuits. |
| BOOT | 5 | P | Supply rail for high-side gate driver (boot terminal). Connect boot capacitor from this pin to SW node. Internally connected to BP via bootstrap PMOS switch. |
| BP | 31 | O | LDO output |
| DRGND | 29 | P | Internal gate driver return. |
| EN_UVLO | 4 | I | Enable pin that can turn on the DC/DC switching converter. Use also to program the required PVIN UVLO when PVIN and VDD are connected together. |
| ILIM | 36 | I/O | Program overcurrent limit by connecting a resistor to ground. |
| MODE | 34 | I | Mode selection pin. Select the control mode, and soft-start timing selection. |
| NC | 6, 7, 26, 27 | | No connect. |
| PGND | 13, 14, 15, 16, 17, 18, 19, 20 | P | Power ground of internal FETs. |
| PGOOD | 35 | O | Open drain power-good status signal. |
| PMB_CLK | 3 | I | Clock input for the PMBus interface. |
| PMB_DATA | 2 | I/O | Data I/O for the PMBus interface. |
| PVIN | 21, 22, 23, 24, 25 | P | Power supply input for integrated power MOSFET pair. |
| RSN | 38 | I | Inverting input of the differential remote sense amplifier. |
| RSP | 39 | I | Non-inverting input of the differential remote sense amplifier. |
| RESV_TRK | 37 | I | Do not connect. |
| SMB_ALERT# | 1 | O | Alert output for the PMBus interface. |
| SW | 8, 9, 10, 11, 12 | I/O | Output switching terminal of power converter. Connect the pins to the output inductor. |
| VDD | 28 | P | Controller power supply input. |

Table 4-1. Pin Functions (continued)

| PIN | | TYPE ⁽¹⁾ | DESCRIPTION |
|-------|-----|---------------------|---|
| NAME | NO. | | |
| VOSNS | 40 | I | Output voltage monitor input pin. |
| VSEL | 33 | I | Program the initial start-up and or reference voltage without feedback resistor dividers (from 0.6 V to 1.2 V in 50-mV increments). |

(1) I = input, O = output, G = GND

5 Specifications

5.1 Absolute Maximum Ratings

over operating free-air temperature range (unless otherwise noted) ⁽¹⁾ ⁽²⁾

| | | MIN | MAX | UNIT |
|---------------------------------------|----------------------------------|---------|-----|------|
| Input voltage | PVIN | −0.3 | 25 | V |
| | VDD | −0.3 | 25 | |
| | BOOT | −0.3 | 34 | |
| | BOOT to SW | DC | 7.7 | |
| | | < 10 ns | 9 | |
| | PMB_CLK, PMB_DATA | −0.3 | 6 | |
| | EN_UVLO, VOSNS, MODE, ADDR, ILIM | −0.3 | 7.7 | |
| | RSP, RESV_TRK, VSEL | −0.3 | 3.6 | |
| | RSN | −0.3 | 0.3 | |
| | PGND, AGND, DRGND | −0.3 | 0.3 | |
| | SW | DC | 25 | |
| | | < 10 ns | −5 | |
| Output voltage | PGOOD, BP | −0.3 | 7.7 | V |
| Output voltage | SMB_ALRT#, PMB_DATA | −0.3 | 6 | V |
| Junction temperature, T _J | | −55 | 150 | °C |
| Storage temperature, T _{stg} | | −55 | 150 | °C |

- (1) Stresses beyond those listed under *Absolute Maximum Ratings* may cause permanent damage to the device. These are stress ratings only, which do not imply functional operation of the device at these or any other conditions beyond those indicated under *Recommended Operating Conditions*. Exposure to absolute-maximum-rated conditions for extended periods may affect device reliability.
- (2) All voltage values are with respect to the network ground terminal unless otherwise noted.

5.2 ESD Ratings

| | | | VALUE | UNIT |
|--------------------|-------------------------|--|-------|------|
| V _(ESD) | Electrostatic discharge | Human-body model (HBM), per ANSI/ESDA/JEDEC JS-001 ⁽¹⁾ | ±2000 | V |
| | | Charged-device model (CDM), per JEDEC specification JESD22-C101 ⁽²⁾ | ±500 | |

- (1) JEDEC document JEP155 states that 500-V HBM allows safe manufacturing with a standard ESD control process.
- (2) JEDEC document JEP157 states that 250-V CDM allows safe manufacturing with a standard ESD control process.

5.3 Recommended Operating Conditions

over operating free-air temperature range (unless otherwise noted)

| | | MIN | MAX | UNIT |
|--------------------------------------|---|---------|------|------|
| Input voltage | PVIN with no snubber circuit: SW ringing peak voltage equals 23 V at 25-A output | 1.5 | 14 | V |
| | PVIN with snubber circuit: SW ringing peak voltage equals 23 V at 25-A output | 1.5 | 18 | |
| | VDD | 4.5 | 22 | |
| | BOOT | –0.1 | 24.5 | |
| | BOOT to SW | DC | 6.5 | |
| | | < 10 ns | 7 | |
| | PMB_CLK, PMB_DATA | –0.1 | 5.5 | |
| | EN_UVLO, VOSNS, MODE, ADDR, ILIM | –0.1 | 5.5 | |
| | RSP, RESV_TRK, VSEL | –0.1 | 3.3 | |
| | RSN | –0.1 | 0.1 | |
| | PGND, AGND, DRGND | –0.1 | 0.1 | |
| | SW | DC | 18 | |
| | | < 10 ns | 27 | |
| Output voltage | PGOOD, BP | –0.1 | 7 | V |
| Output voltage | SMB_ALRT#, PMB_DATA | –0.1 | 5.5 | V |
| Junction temperature, T _J | | –40 | 125 | °C |

5.4 Thermal Information

| THERMAL METRIC ⁽¹⁾ | | TPS549B22 | UNIT |
|-------------------------------|--|-----------------|------|
| | | RVF (LQFN-CLIP) | |
| | | 40 PINS | |
| R _{θJA} | Junction-to-ambient thermal resistance | 28.5 | °C/W |
| R _{θJC(top)} | Junction-to-case (top) thermal resistance | 18.3 | °C/W |
| R _{θJB} | Junction-to-board thermal resistance | 3.6 | °C/W |
| Ψ _{JT} | Junction-to-top characterization parameter | 0.96 | °C/W |
| Ψ _{JB} | Junction-to-board characterization parameter | 3.6 | °C/W |
| R _{θJC(bot)} | Junction-to-case (bottom) thermal resistance | 0.6 | °C/W |

(1) For more information about traditional and new thermal metrics, see the [Semiconductor and IC Package Thermal Metrics](#) application report.

5.5 Electrical Characteristics

over operating free-air temperature range, V_{VDD} = 12 V, V_{EN_UVLO} = 5 V (unless otherwise noted)

| PARAMETER | | TEST CONDITION | MIN | TYP | MAX | UNIT |
|--|---------------------|--|-----|-----|-----|------|
| MOSFET ON-RESISTANCE (R_{DS(on)}) | | | | | | |
| R _{DS(on)} | High-side FET | (V _{BOOT} – V _{SW}) = 5 V, I _D = 25 A, T _J = 25°C | | 4.1 | | mΩ |
| | Low-side FET | V _{VDD} = 5 V, I _D = 25 A, T _J = 25°C | | 1.9 | | mΩ |
| INPUT SUPPLY AND CURRENT | | | | | | |
| V _{VDD} | VDD supply voltage | Nominal VDD voltage range | 4.5 | | 22 | V |
| I _{VDD} | VDD bias current | No load, power conversion enabled (no switching), T _A = 25°C, | | 2 | | mA |
| I _{VDDSTBY} | VDD standby current | No load, power conversion disabled, T _A = 25°C | | 700 | | μA |

5.5 Electrical Characteristics (continued)

over operating free-air temperature range, $V_{DD} = 12\text{ V}$, $V_{EN_UVLO} = 5\text{ V}$ (unless otherwise noted)

| PARAMETER | | TEST CONDITION | MIN | TYP | MAX | UNIT |
|--|---|--|-------|-----------|------|--------------------|
| UNDERVOLTAGE LOCKOUT | | | | | | |
| V_{DD_UVLO} | VDD UVLO rising threshold | | 4.123 | 4.25 | 4.41 | V |
| $V_{DD_UVLO(HYS)}$ | VDD UVLO hysteresis | | | 0.2 | | V |
| $V_{EN_ON_TH}$ | EN UVLO on threshold | | 1.45 | 1.6 | 1.75 | V |
| V_{EN_HYS} | EN UVLO hysteresis | | 270 | 300 | 340 | mV |
| I_{EN_LKG} | EN UVLO input leakage current | $V_{EN_UVLO} = 5\text{ V}$ | -1 | 0 | 1 | μA |
| INTERNAL REFERENCE VOLTAGE RANGE | | | | | | |
| V_{INTREF} | Internal REF voltage | | | 900.4 | | mV |
| $V_{INTREFTOL}$ | Internal REF voltage tolerance | $-40^{\circ}\text{C} \leq T_J \leq 125^{\circ}\text{C}$ | -0.5% | | 0.5% | |
| V_{INTREF} | Internal REF voltage range | | 0.6 | | 1.2 | V |
| OUTPUT VOLTAGE | | | | | | |
| V_{IOS_LPCMP} | Loop comparator input offset voltage ⁽¹⁾ | | -2.5 | | 2.5 | mV |
| I_{RSP} | RSP input current | $V_{RSP} = 600\text{ mV}$ | -1 | | 1 | μA |
| $I_{VO(dis)}$ | VO discharge current | $V_{VO} = 0.5\text{ V}$, power conversion disabled | 8 | 12 | | mA |
| DIFFERENTIAL REMOTE SENSE AMPLIFIER | | | | | | |
| f_{UGBW} | Unity gain bandwidth ⁽¹⁾ | | 5 | 7 | | MHz |
| A_0 | Open loop gain ⁽¹⁾ | | 75 | | | dB |
| SR | Slew rate ⁽¹⁾ | | | ± 4.7 | | V/ μsec |
| V_{IRNG} | Input range ⁽¹⁾ | | -0.2 | | 1.8 | V |
| V_{OFFSET} | Input offset voltage ⁽¹⁾ | | -3.5 | | 3.5 | mV |
| INTERNAL BOOT STRAP SWITCH | | | | | | |
| V_F | Forward voltage | $V_{BP-BOOT}$, $I_F = 10\text{ mA}$, $T_A = 25^{\circ}\text{C}$ | | 0.1 | 0.2 | V |
| I_{BOOT} | VBST leakage current | $V_{BOOT} = 30\text{ V}$, $V_{SW} = 25\text{ V}$, $T_A = 25^{\circ}\text{C}$ | | 0.01 | 1.5 | μA |
| SWITCHING FREQUENCY | | | | | | |
| f_{SW} | VO switching frequency ⁽²⁾ | $V_{IN} = 12\text{ V}$, $V_{VO} = 1\text{ V}$, $T_A = 25^{\circ}\text{C}$ | 275 | 315 | 350 | kHz |
| | | | 380 | 425 | 475 | |
| | | | 490 | 550 | 615 | |
| | | | 585 | 650 | 740 | |
| | | | 740 | 825 | 930 | |
| | | | 790 | 900 | 995 | |
| | | | 920 | 1025 | 1160 | |
| | | | 950 | 1125 | 1250 | |
| $t_{ON(min)}$ | Minimum on-time ⁽¹⁾ | | | 60 | | ns |
| $t_{OFF(min)}$ | Minimum off-time ⁽¹⁾ | DRVH falling to rising | | | 300 | ns |

5.5 Electrical Characteristics (continued)

over operating free-air temperature range, $V_{DD} = 12\text{ V}$, $V_{EN\text{ UVLO}} = 5\text{ V}$ (unless otherwise noted)

| PARAMETER | | TEST CONDITION | MIN | TYP | MAX | UNIT |
|----------------------------|--|---|----------------------------|-----------------|-----|------|
| MODE, VSEL, ADDR DETECTION | | | | | | |
| V _{DETECT_TH} | MODE, VSEL, and ADDR detection voltage | V _{BP} = 2.93 V, R _{HIGH} = 100 kΩ | Open | V _{BP} | | V |
| | | | R _{LOW} = 187 kΩ | 1.9091 | | |
| | | | R _{LOW} = 165 kΩ | 1.8243 | | |
| | | | R _{LOW} = 147 kΩ | 1.7438 | | |
| | | | R _{LOW} = 133 kΩ | 1.6725 | | |
| | | | R _{LOW} = 121 kΩ | 1.6042 | | |
| | | | R _{LOW} = 110 kΩ | 1.5348 | | |
| | | | R _{LOW} = 100 kΩ | 1.465 | | |
| | | | R _{LOW} = 90.9 kΩ | 1.3952 | | |
| | | | R _{LOW} = 82.5 kΩ | 1.3245 | | |
| | | | R _{LOW} = 75 kΩ | 1.2557 | | |
| | | | R _{LOW} = 68.1 kΩ | 1.187 | | |
| | | | R _{LOW} = 60.4 kΩ | 1.1033 | | |
| | | | R _{LOW} = 53.6 kΩ | 1.0224 | | |
| | | | R _{LOW} = 47.5 kΩ | 0.9436 | | |
| | | | R _{LOW} = 42.2 kΩ | 0.8695 | | |
| | | | R _{LOW} = 37.4 kΩ | 0.7975 | | |
| | | | R _{LOW} = 33.2 kΩ | 0.7303 | | |
| | | | R _{LOW} = 29.4 kΩ | 0.6657 | | |
| | | | R _{LOW} = 25.5 kΩ | 0.5953 | | |
| | | | R _{LOW} = 22.1 kΩ | 0.5303 | | |
| | | | R _{LOW} = 19.1 kΩ | 0.4699 | | |
| | | | R _{LOW} = 16.5 kΩ | 0.415 | | |
| | | | R _{LOW} = 14.3 kΩ | 0.3666 | | |
| | | | R _{LOW} = 12.1 kΩ | 0.3163 | | |
| | | | R _{LOW} = 10 kΩ | 0.2664 | | |
| | | | R _{LOW} = 7.87 kΩ | 0.2138 | | |
| | | | R _{LOW} = 6.19 kΩ | 0.1708 | | |
| | | | R _{LOW} = 4.64 kΩ | 0.1299 | | |
| | | | R _{LOW} = 3.16 kΩ | 0.0898 | | |
| | | | R _{LOW} = 1.78 kΩ | 0.0512 | | |
| | | | R _{LOW} = 0 Ω | GND | | |

5.5 Electrical Characteristics (continued)

over operating free-air temperature range, $V_{DD} = 12\text{ V}$, $V_{EN_UVLO} = 5\text{ V}$ (unless otherwise noted)

| PARAMETER | | TEST CONDITION | MIN | TYP | MAX | UNIT | |
|-----------------------|--|---|---------------------------------|---------------------|------------------|-------------------|----|
| SOFT-START | | | | | | | |
| t _{SS} | Soft-start time | V _{OUT} rising from 0 V to 95% of final set point, R _{MODE_HIGH} = 100 kΩ | R _{MODE_LOW} = 60.4 kΩ | 7 | 8 ⁽⁴⁾ | 10 | ms |
| | | | R _{MODE_LOW} = 53.6 kΩ | 3.6 | 4 ⁽⁵⁾ | 5.2 | |
| | | | R _{MODE_LOW} = 47.5 kΩ | 1.6 | 2 | 2.8 | |
| | | | R _{MODE_LOW} = 42.2 kΩ | 0.8 | 1 | 1.6 | |
| POWER-ON DELAY | | | | | | | |
| t _{PODLY} | Power-on delay time | Delay from enable to switching POD[2:0] = 000 | | 256 | | μs | |
| | | Delay from enable to switching POD[2:0] = 001 | | 512 | | | |
| | | Delay from enable to switching POD[2:0] = 010 | | 1.024 | | ms | |
| | | Delay from enable to switching POD[2:0] = 011 | | 2.048 | | | |
| | | Delay from enable to switching POD[2:0] = 100 | | 4.096 | | | |
| | | Delay from enable to switching POD[2:0] = 101 | | 8.192 | | | |
| | | Delay from enable to switching POD[2:0] = 110 | | 16.384 | | | |
| | | Delay from enable to switching POD[2:0] = 111 | | 32.768 | | | |
| PGOOD COMPARATOR | | | | | | | |
| V _{PGTH} | PGOOD threshold | PGOOD in from higher | 105 | 108 | 111 | %V _{REF} | |
| | | PGOOD in from lower | 89 | 92 | 95 | | |
| | | PGOOD out to higher | | 120 | | | |
| | | PGOOD out to lower | | 68 | | | |
| I _{PG} | PGOOD sink current | V _{PGOOD} = 0.5 V | | 6.9 | | mA | |
| t _{PGDLY} | PGOOD delay time | Delay for PGOOD going in, PGD[2:0] = 000 | | 256 | | μs | |
| | | Delay for PGOOD going in, PGD[2:0] = 001 | | 512 | | | |
| | | Delay for PGOOD going in, PGD[2:0] = 010 | | 1.024 | | ms | |
| | | Delay for PGOOD going in, PGD[2:0] = 011 | | 2.048 | | | |
| | | Delay for PGOOD going in, PGD[2:0] = 100 | | 4.096 | | | |
| | | Delay for PGOOD going in, PGD[2:0] = 101 | | 8.192 | | | |
| | | Delay for PGOOD going in, PGD[2:0] = 110 | | 16.384 | | | |
| | | Delay for PGOOD going in, PGD[2:0] = 111 | | 131 | | | |
| | | Delay for PGOOD coming out | | | 2 | μs | |
| I _{PGLK} | PGOOD leakage current | V _{PGOOD} = 5 V | −1 | 0 | 1 | μA | |
| CURRENT DETECTION | | | | | | | |
| I _{OCL_VA} | Valley current limit threshold | R _{LIM} = 61.9 kΩ | | 30 | | A | |
| | | OC tolerance | | ±15% ⁽³⁾ | | | |
| | | R _{LIM} = 51.1 kΩ | | 25 | | A | |
| | | OC tolerance | | ±15% ⁽³⁾ | | | |
| | | R _{LIM} = 40.2 kΩ | 17 | 20 | 23 | A | |
| I _{OCL_VA_N} | Negative valley current limit threshold | R _{LIM} = 61.9 kΩ | | −30 | | A | |
| | | R _{LIM} = 51.1 kΩ | | −25 | | | |
| | | R _{LIM} = 40.2 kΩ | | −20 | | | |
| I _{CLMP_LO} | Clamp current at V _{LIM} clamp at lowest | V _{ILIM_CLMP} = 0.1 V, T _A = 25°C | | 5 | | A | |
| I _{CLMP_HI} | Clamp current at V _{LIM} clamp at highest | V _{ILIM_CLMP} = 1.2 V, T _A = 25°C | | 50 | | A | |

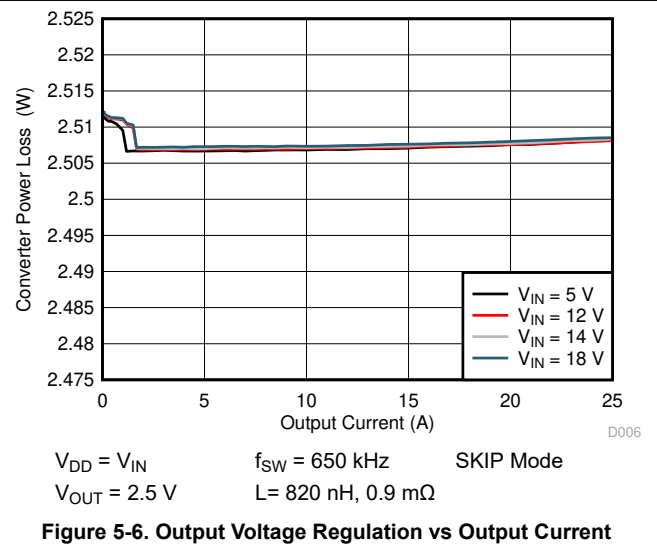
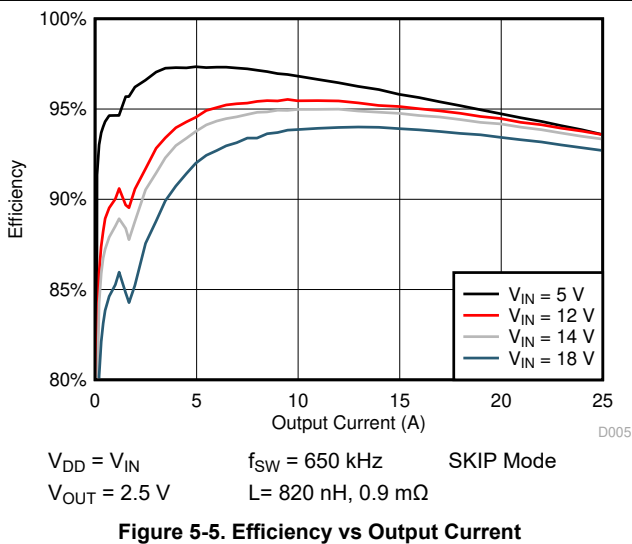
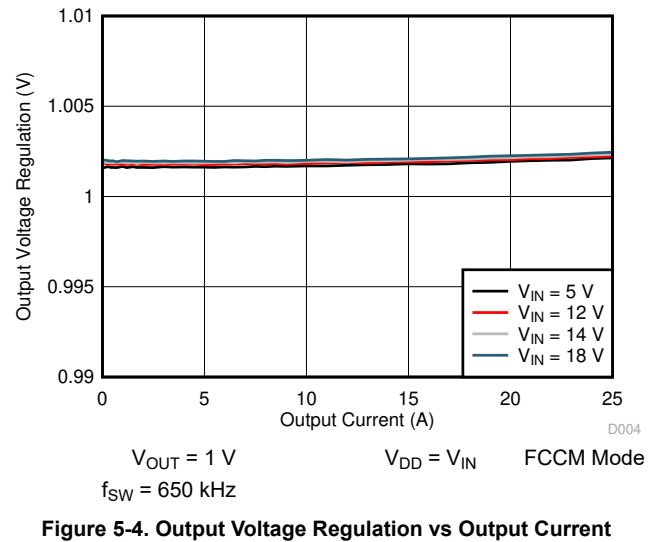
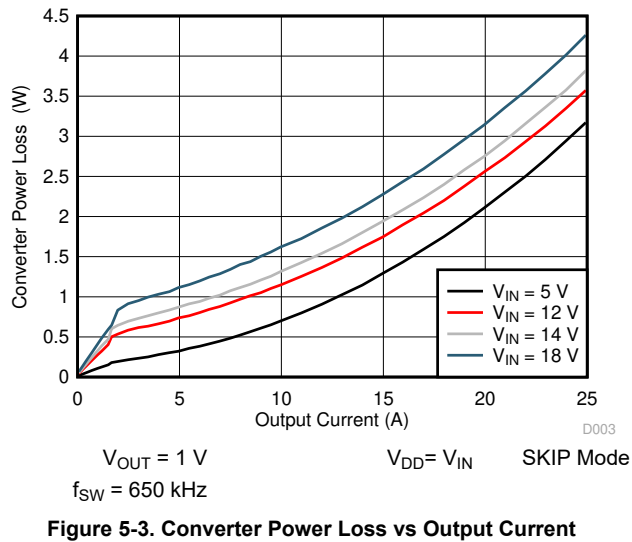
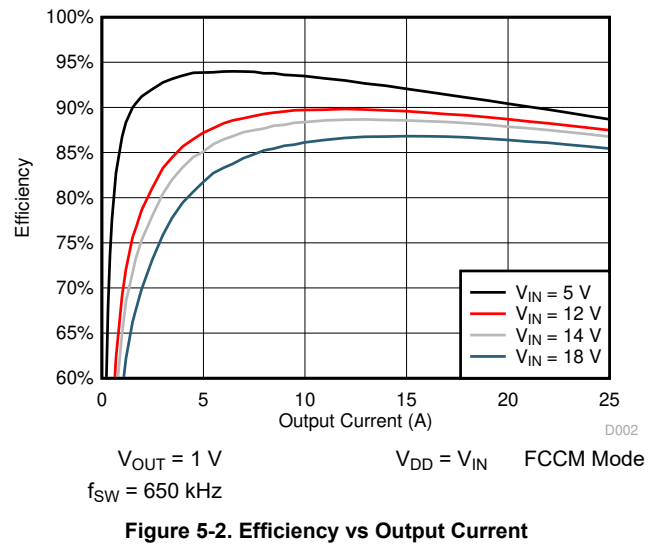
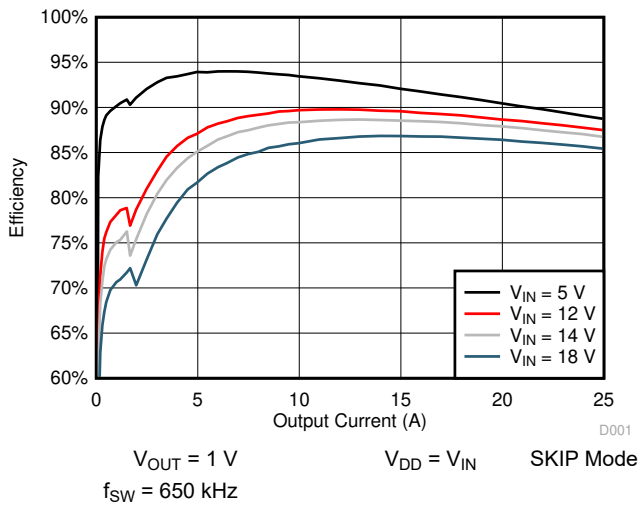
5.5 Electrical Characteristics (continued)

over operating free-air temperature range, $V_{DD} = 12\text{ V}$, $V_{EN\text{ UVLO}} = 5\text{ V}$ (unless otherwise noted)

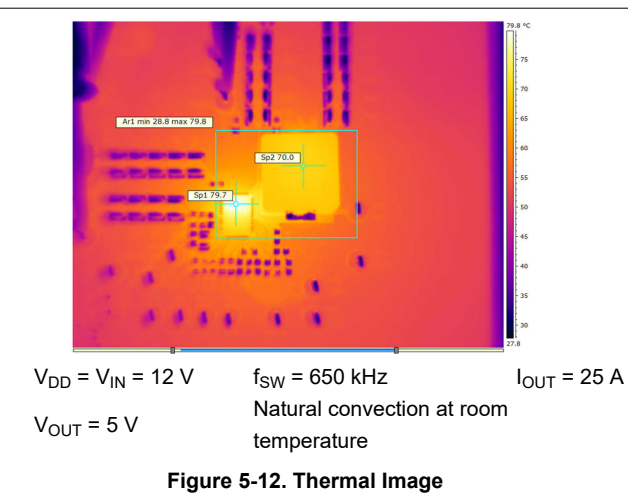
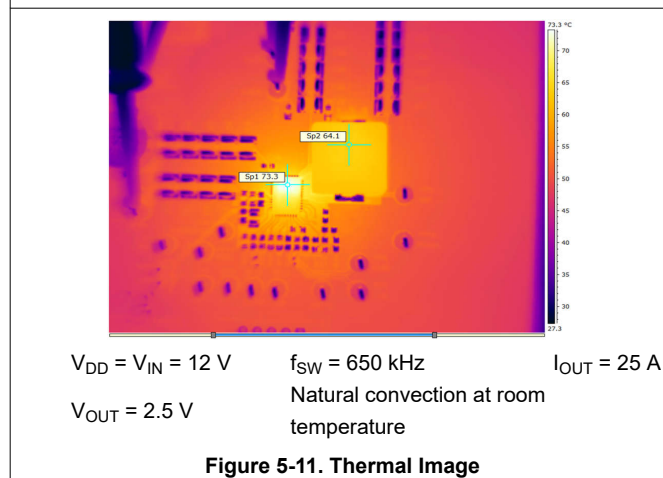
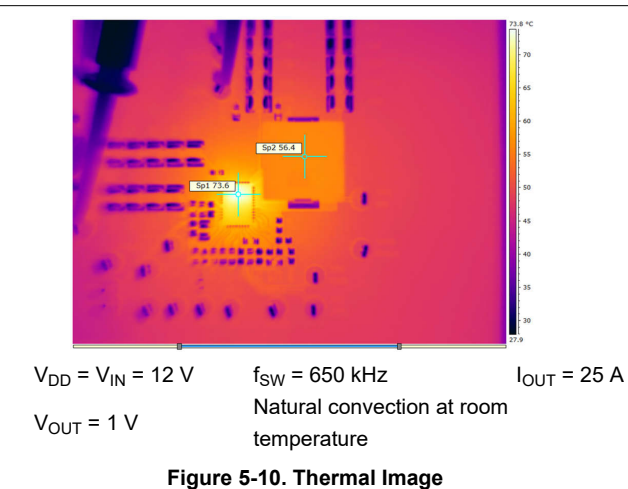
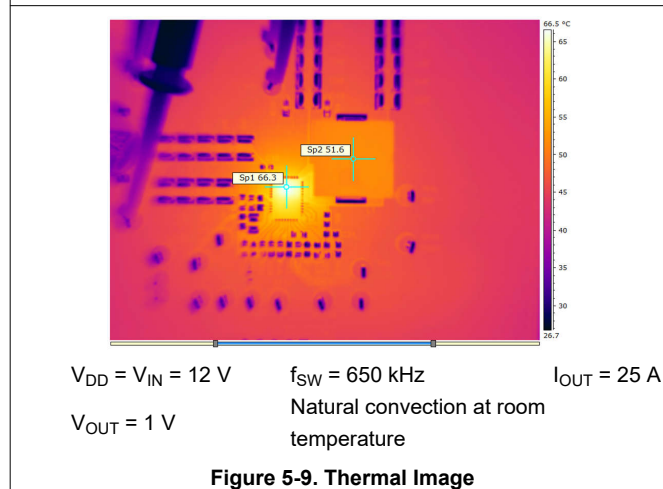
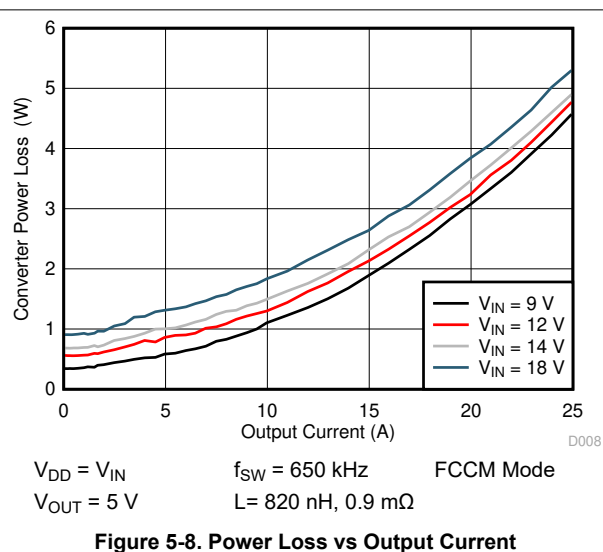
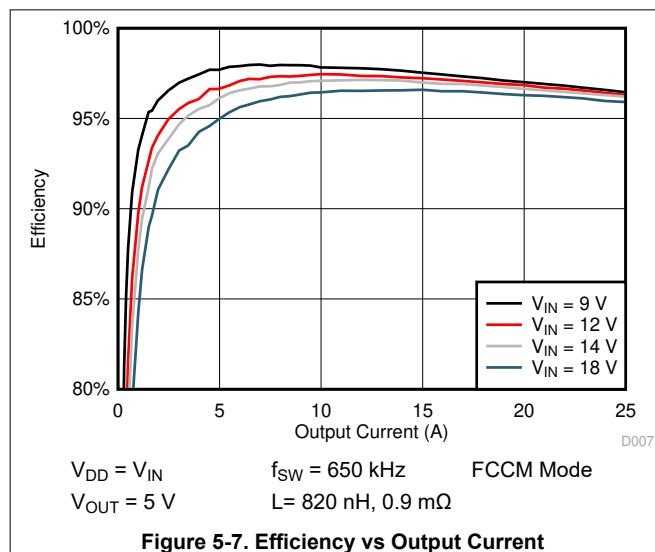
| PARAMETER | | TEST CONDITION | MIN | TYP | MAX | UNIT |
|--|---|---|------|------|------|------------------|
| PROTECTIONS AND OOB | | | | | | |
| V _{BPUVLO} | BP UVLO threshold voltage | Wake-up | 3.32 | | | V |
| | | Shutdown | 3.11 | | | |
| V _{OVP} | OVP threshold voltage | OVP detect voltage | 117% | 120% | 123% | V _{REF} |
| t _{OVPDLY} | OVP response time | 100-mV over drive | 1 | | | μs |
| V _{UVP} | UVP threshold voltage | UVP detect voltage | 65% | 68% | 71% | V _{REF} |
| t _{UVPDLY} | UVP delay filter delay time | | 1 | | | ms |
| V _{OOB} | OOB threshold voltage | | 8% | | | V _{REF} |
| t _{HICDLY} | Hiccup blanking time | t _{SS} = 1 ms | 16 | | | ms |
| | | t _{SS} = 2 ms | 24 | | | ms |
| | | t _{SS} = 4 ms | 38 | | | ms |
| | | t _{SS} = 8 ms | 67 | | | ms |
| BP VOLTAGE | | | | | | |
| V _{BP} | BP LDO output voltage | V _{IN} = 12 V, 0 A ≤ I _{LOAD} ≤ 10 mA, | 5.07 | | | V |
| V _{BPDO} | BP LDO dropout voltage | V _{IN} = 4.5 V, I _{LOAD} = 30 mA, T _A = 25°C | 365 | | | mV |
| I _{BPMAX} | BP LDO overcurrent limit | V _{IN} = 12 V, T _A = 25°C | 100 | | | mA |
| PMB_CLK and PMB_DATA INPUT BUFFER LOGIC THRESHOLDS | | | | | | |
| V _{IL-PMBUS} | PMB_CLK and PMB_DATA low-level input voltage ⁽¹⁾ | | 0.8 | | | V |
| V _{IH-PMBUS} | PMB_CLK and PMB_DATA high-level input voltage ⁽¹⁾ | | 1.35 | | | V |
| V _{HY-PMBUS} | PMB_CLK and PMB_DATA hysteresis voltage ⁽¹⁾ | | 150 | | | mV |
| PMB_CLK and SMB_ALRT OUTPUT PULLDOWN | | | | | | |
| V _{OL-PMBUS} | PMB_DATA and SMB_ALRT low-level output voltage ⁽¹⁾ | I _{SINK} = 20 mA | 0.4 | | | V |
| THERMAL SHUTDOWN | | | | | | |
| T _{SDN} | Built-In thermal shutdown threshold ⁽¹⁾ | Shutdown temperature | 155 | 165 | | °C |
| | | Hysteresis | 30 | | | |

- (1) Specified by design. Not production tested.
- (2) Correlated with close-loop EVM measurement at load current of 30 A.
- (3) Calculated from 20-A test data. Not production tested.
- (4) To use the 8-ms SS setting, follow the steps outlined in [Section 6.5.1.4](#).
- (5) To use the 4-ms SS setting, follow the steps outlined in [Section 6.5.1.4](#).

5.6 Typical Characteristics



5.6 Typical Characteristics (continued)



5.6 Typical Characteristics (continued)

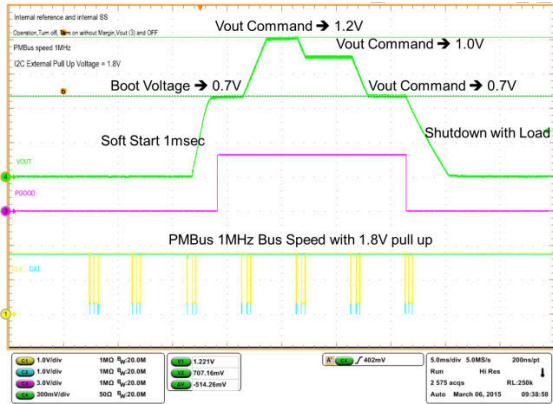
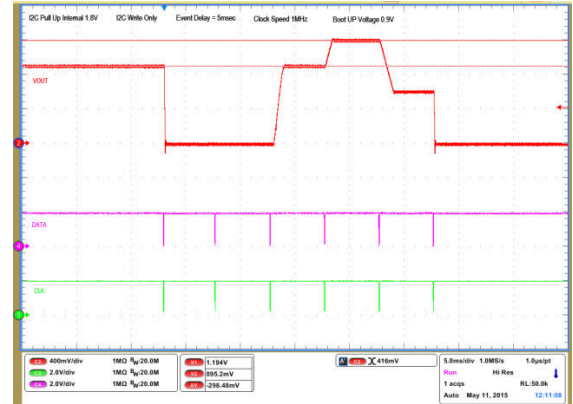
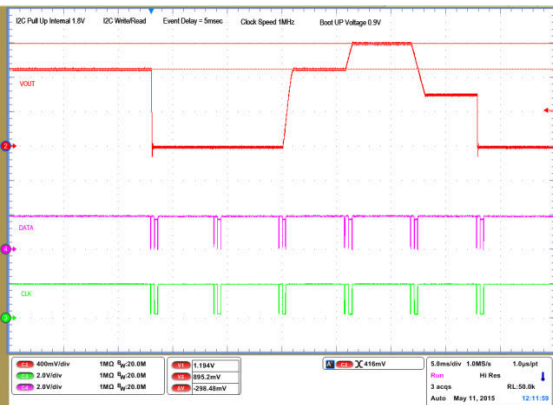


Figure 5-13. PMBus 1-MHz Bus Speed with 1.8-V Pullup



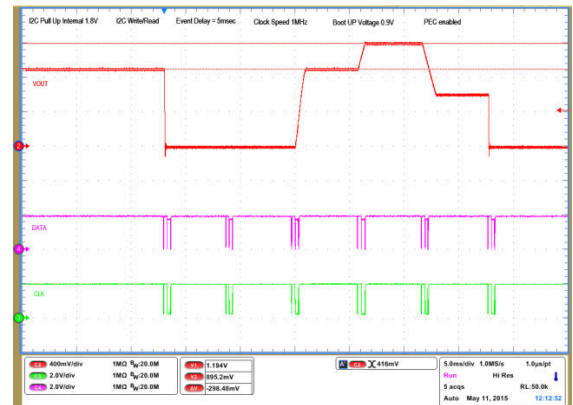
- 1 – Operation only
- 2 – Turnoff
- 3 – Turnon without Margin
- 4 – V_{OUT} Command up to 1.2 V
- 5 – V_{OUT} Command down to 0.6 V
- 6 – Turnoff

Figure 5-14. 6 Sequenced Events – I2C Write



- 1 – Operation only
- 2 – Turnoff
- 3 – Turnon without Margin
- 4 – V_{OUT} Command up to 1.2 V
- 5 – V_{OUT} Command down to 0.6 V
- 6 – Turnoff

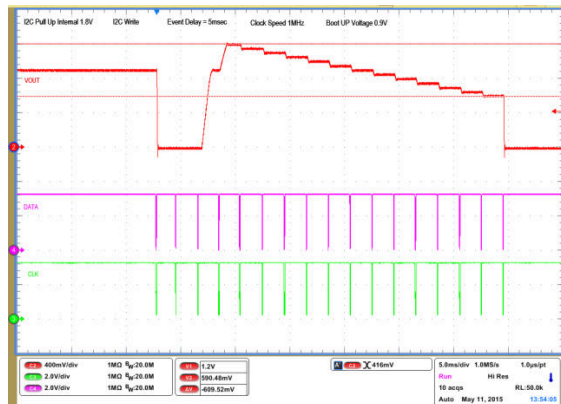
Figure 5-15. 6 Sequenced Events – I2C Write/Read



- 1 – Operation only
- 2 – Turnoff
- 3 – Turnon without Margin
- 4 – V_{OUT} Command up to 1.2 V
- 5 – V_{OUT} Command down to 0.6 V
- 6 – Turnoff

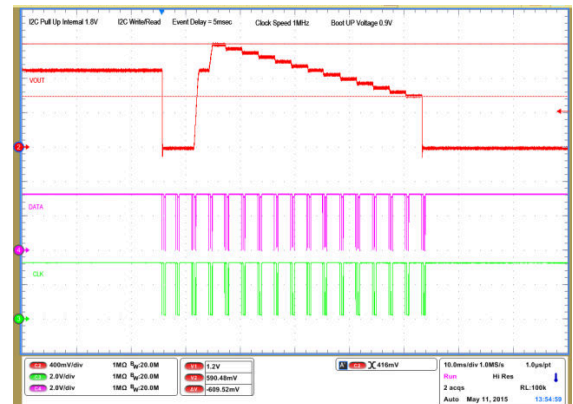
Figure 5-16. 6 Sequenced Events – I2C Write/Read with PEC

5.6 Typical Characteristics (continued)



- | | |
|---------------------------|--|
| 1 – Operation only | 4 – 16 V _{OUT} Command up to 1.2 V, |
| 2 – Turnoff | 50 mV per step down to 0.6 V |
| 3 – Turnon without Margin | 17 – Turnoff |

Figure 5-17. 17 Sequenced Events – I2C Write



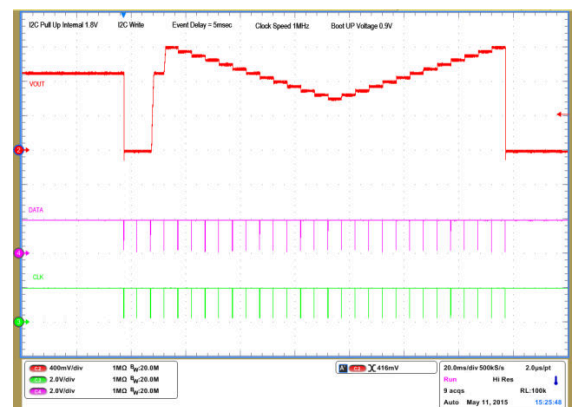
- | | |
|---------------------------|--|
| 1 – Operation only | 4 – 16 V _{OUT} Command up to 1.2 V _i |
| 2 – Turnoff | 50 mV per step down to 0.6 V |
| 3 – Turnon without Margin | 17 – Turnoff |

Figure 5-18. 17 Sequenced Events – I2C Write/Read



- | | |
|--------------------|--|
| 1 – Operation only | 4 – 16 V _{OUT} Command up to 1.2 V, |
| 2 – Turnoff | 50 mV per step down to 0.6 V |
| 3 – Turnon without | 17 – Turnoff |
| Margin | |

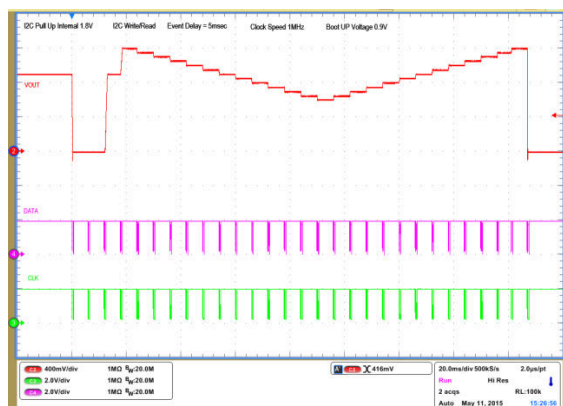
Figure 5-19. 17 Sequenced Events – I2C Write/Read with PEC



- | | |
|---------------------------|---|
| 1 – Operation only | 4 – 16 V_{OUT} Command up to 1.2 V, |
| 2 – Turnoff | 50 mV per step down to 0.6 V |
| 3 – Turnon without Margin | 17 – 28 V_{OUT} Command from 0.6 V to 1.2 V, 50 mV per step |
| | 29 – Turnoff |

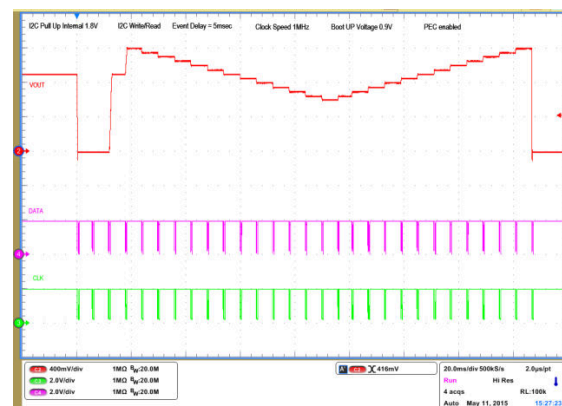
Figure 5-20. 29 Sequenced Events – I2C Write

5.6 Typical Characteristics (continued)



- | | |
|---------------------------|--|
| 1 – Operation only | 4 – 16 V _{OUT} Command up to 1.2 V, 50 mV per step down to 0.6 V |
| 2 – Turnoff | 17 – 28 Vout Command from 0.6 V to 1.2 V, 50 mV per step |
| 3 – Turnon without Margin | 29 – Turnoff |

Figure 5-21. 29 Sequenced Events – I2C Write/Read



- | | |
|---------------------------|--|
| 1 – Operation only | 4 – 16 Vout Command up to 1.2 V, |
| 2 – Turnoff | 50 mV per step down to 0.6 V |
| 3 – Turnon without Margin | 17 – 28 Vout Command from 0.6 V to 1.2 V, 50 mV per step |
| | 29 – Turnoff |

Figure 5-22. 29 Sequenced Events – I2C Write/Read with PEC

6 Detailed Description

6.1 Overview

The TPS549B22 device is a high-efficiency, single-channel, FET-integrated, synchronous buck converter. The device is designed for point-of-load applications with 25 A or lower output current in storage, telecom and similar digital applications. The device features proprietary D-CAP3 control mode combined with adaptive on-time architecture. This combination is designed for building modern high/low duty ratio, ultra-fast load step response DC-DC converters.

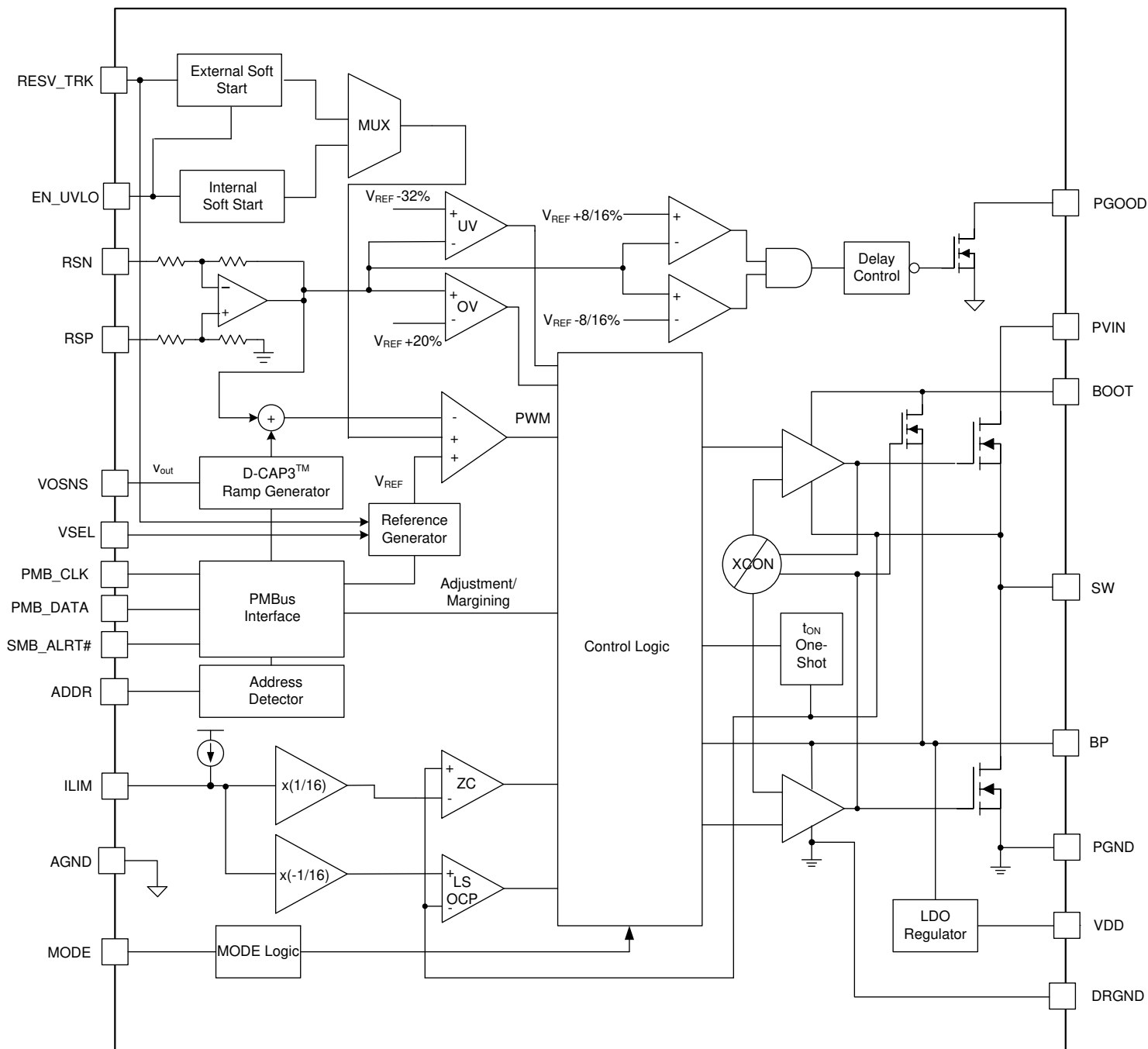
The TPS549B22 device has integrated MOSFETs rated at 25-A TDC.

The converter input voltage range is from 1.5 V up to 18 V, and the V_{DD} input voltage range is from 4.5 V to 22 V. The output voltage ranges from 0.6 V to 5.5 V.

Stable operation with all ceramic output capacitors is supported as the D-CAP3 control mode uses emulated current information to control the modulation. An advantage of this control scheme is that it does not require phase compensation network outside, which makes the control scheme easy to use and also enables low external component count. . Adaptive on-time control tracks the preset switching frequency over a wide range of input and output voltage while increasing switching frequency as needed during load step transient.

The default preset switching frequency for this device is 650 kHz. Switching frequency is also programmable from 8 preset values through PMBus interface. supports digital communication via PMBus using standard interfacing pins, PMB_CLK, PMB_DATA and SMB_ALRT#. The detailed PMBus features, capabilities and command sets of the TPS549B22 can be found in [PMBus Programming](#).

6.2 Functional Block Diagram



Copyright © 2017, Texas Instruments Incorporated

6.3 Feature Description

6.3.1 25-A FET

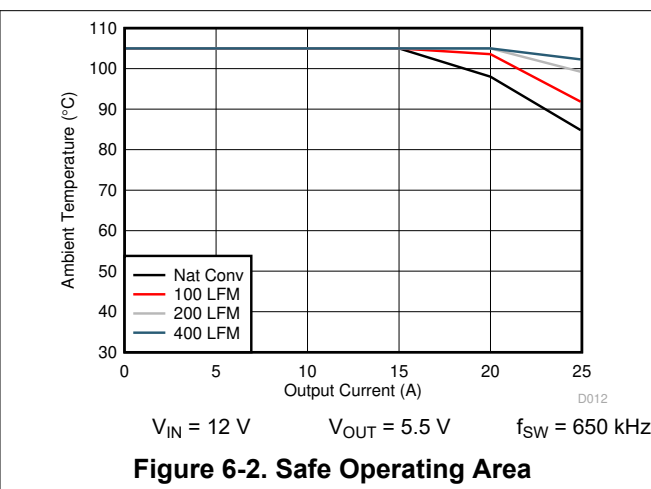
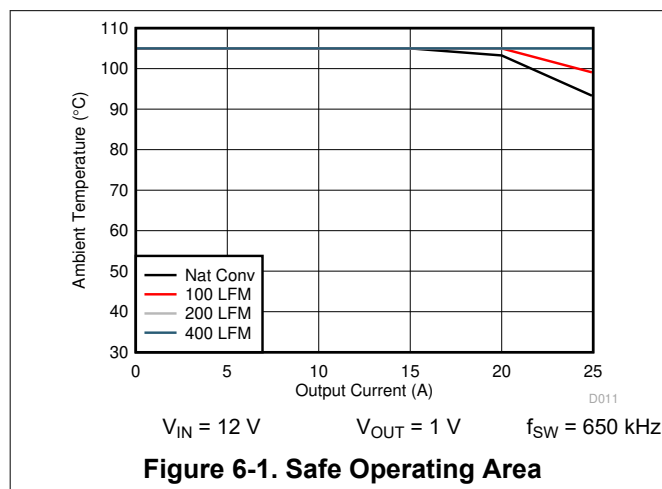
The TPS549B22 device is a high-performance, integrated FET converter supporting current rating up to 25 A thermally. It integrates two N-channel NexFET™ power MOSFETs, enabling high power density and small PCB layout area. The drain-to-source breakdown voltage for these FETs is 25-V DC and 27-V transient for 10 ns. Avalanche breakdown occurs if the absolute maximum voltage rating exceeds 27 V. To limit the switch node ringing of the device, TI recommends adding an R-C snubber from the SW node to the PGND pins. Refer to [Section 8.4.1](#) for the detailed recommendations.

6.3.2 On-Resistance

The typical on-resistance ($R_{DS(on)}$) for the high-side MOSFET is 4.1 m Ω , and typical on-resistance for the low-side MOSFET is 1.9 m Ω with a nominal gate voltage (V_{GS}) of 5 V.

6.3.3 Package Size, Efficiency and Thermal Performance

The TPS549B22 device is available in a 7 mm × 5 mm QFN package with 40 power and I/O pins. The device employs TI proprietary MCM packaging technology with thermal pad. With a properly designed system layout, applications achieve optimized safe operating area (SOA) performance. The curves shown in Figure 6-1 and Figure 6-2 are based on the orderable evaluation module design. (See www.ti.com to order the EVM.)



6.3.4 Soft-Start Operation

In the TPS549B22 device the soft-start time controls the inrush current required to charge the output capacitor bank during start-up. The device offers selectable soft-start options of 1 ms, 2 ms, 4 ms and 8 ms. When the device is enabled (either by EN or V_{DD} UVLO), the reference voltage ramps from 0 V to the final level defined by VSEL pin-strap configuration, in a given soft-start time. The TPS549B22 device supports several soft-start times between 1 ms and 8 ms selected by MODE pin configuration. Refer to MODE definition table for details.

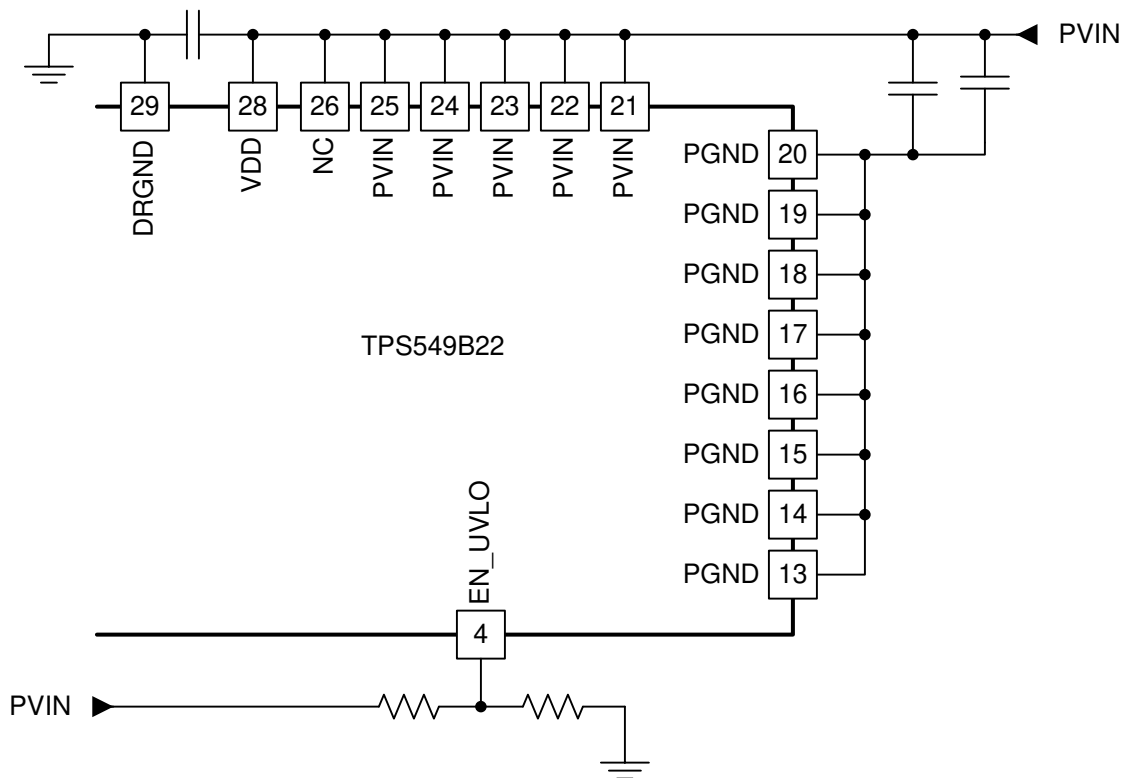
6.3.5 V_{DD} Supply Undervoltage Lockout (UVLO) Protection

The TPS549B22 device provides fixed V_{DD} undervoltage lockout threshold and hysteresis. The typical V_{DD} turnon threshold is 4.25 V, and hysteresis is 0.2 V. The V_{DD} UVLO can be used in conjunction with the EN_UVLO signal to provide proper power sequence to the converter design. UVLO is a non-latched protection.

6.3.6 EN_UVLO Pin Functionality

The EN_UVLO pin drives an input buffer with accurate threshold and can be used to program the exact required turnon and turnoff thresholds for switcher enable, V_{DD} UVLO or VIN UVLO (if VIN and VDD are tied together). If desired, an external resistor divider can be used to set and program the turnon threshold for V_{DD} or VIN UVLO.

Figure 6-3 shows how to program the input voltage UVLO using the EN_UVLO pin.



Copyright © 2017, Texas Instruments Incorporated

Figure 6-3. Programming the UVLO Voltage

6.3.7 Fault Protections

This section describes positive and negative overcurrent limits, overvoltage protections, out-of-bounds limits, undervoltage protections, and overtemperature protections.

6.3.7.1 Current Limit (ILIM) Functionality

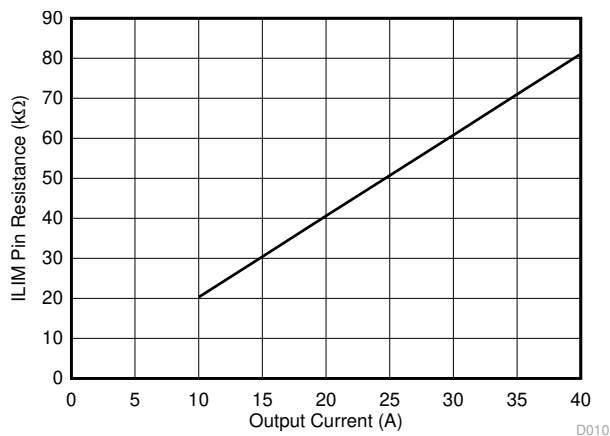


Figure 6-4. Current Limit Resistance vs OCP Valley Overcurrent Limit

The ILIM pin sets the OCP level. Connect the ILIM pin to GND through the voltage setting resistor, R_{ILIM} . To provide both good accuracy and a cost-effective solution, the TPS549B22 device supports temperature compensated internal MOSFET $R_{DS(on)}$ sensing.

Also, the TPS549B22 device performs both positive and negative inductor current limiting with the same magnitudes. The positive current limit normally protects the inductor from saturation that causes damage to the high-side FET and low-side FET. The negative current limit protects the low-side FET during OVP discharge.

The voltage between GND pin and SW pin during the OFF time monitors the inductor current. The current limit has 1200 ppm/°C temperature slope to compensate the temperature dependency of the on-resistance ($R_{DS(on)}$). The GND pin is used as the positive current sensing node.

The TPS549B22 device uses cycle-by-cycle over-current limiting control. The inductor current is monitored during the OFF-state and the controller maintains the OFF-state during the period that the inductor current is larger than the overcurrent I_{LIM} level. V_{LIM} sets the valley level of the inductor current.

6.3.7.2 V_{DD} Undervoltage Lockout (UVLO)

The TPS549B22 device has an UVLO protection function for the V_{DD} supply input. The on-threshold voltage is 4.25 V with 200 mV of hysteresis. During a UVLO condition, the device is disabled regardless of the EN_UVLO pin voltage. The supply voltage (V_{VDD}) must be above the on-threshold to begin the pin strap detection.

6.3.7.3 Overvoltage Protection (OVP) and Undervoltage Protection (UVP)

The device monitors a feedback voltage to detect overvoltage and undervoltage. When the feedback voltage becomes lower than 68% of the target voltage, the UVP comparator output goes high and an internal UVP delay counter begins counting. After 1 ms, the device latches OFF both high-side and low-side MOSFETs drivers. The UVP function enables after soft-start is complete.

When the feedback voltage becomes higher than 120% of the target voltage, the OVP comparator output goes high and the circuit latches OFF the high-side MOSFET driver and turns on the low-side MOSFET until reaching a negative current limit. Upon reaching the negative current limit, the low-side FET is turned off and the high-side FET is turned on again for a minimum on-time. The TPS549B22 device operates in this cycle until the output voltage is pulled down under the UVP threshold voltage for 1 ms. The fault is cleared with a reset of VDD or by retoggling the EN pin.

Table 6-1. Overvoltage Protection Details

| REFERENCE VOLTAGE (V_{REF}) | SOFT-START RAMP | START-UP OVP THRESHOLD | OPERATING OVP THRESHOLD | OVP DELAY 100 mV OD (μ s) | OVP RESET |
|---------------------------------|-----------------|---------------------------------------|---------------------------------------|--------------------------------|-----------|
| Internal | Internal | $1.2 \times \text{Internal } V_{REF}$ | $1.2 \times \text{Internal } V_{REF}$ | 1 | UVP |

6.3.7.4 Out-of-Bounds Operation

The device has an out-of-bounds (OOB) overvoltage protection that protects the output load at a much lower overvoltage threshold of 8% above the target voltage. OOB protection does not trigger an overvoltage fault, so the device is not latched off after an OOB event. OOB protection operates as an early no-fault overvoltage-protection mechanism. During the OOB operation, the controller operates in forced PWM mode only by turning on the low-side FET. Turning on the low-side FET beyond the zero inductor current quickly discharges the output capacitor thus causing the output voltage to fall quickly toward the setpoint. During the operation, the cycle-by-cycle negative current limit is also activated to make sure of the safe operation of the internal FETs.

6.3.7.5 Overtemperature Protection

TPS549B22 device has overtemperature protection (OTP) by monitoring the die temperature. If the temperature exceeds the threshold value (default value 165°C), TPS549B22 device is shut off. When the temperature falls about 25°C below the threshold value, the device turns on again. The OTP is a non-latch protection.

6.4 Device Functional Modes

6.4.1 D-CAP3™ Control Mode Topology

The TPS549B22 employs an artificial ramp generator that stabilizes the loop. The ramp amplitude is automatically adjusted as a function of selected switching frequency (f_{SW}). The ramp amplitude is a function

of duty cycle (V_{OUT} -to- V_{IN} ratio). Consequently, two additional pin-strap bits are provided for fine tuning the internal ramp amplitude. The device uses an improved D-CAP3 control mode architecture that incorporates a steady-state error integrator. The slow integrator improves the output voltage DC accuracy greatly and presents minimal impact to small signal transient response. To further enhance the small signal stability of the control loop, the device uses a modified ramp generator that supports a wider range of output LC stage.

6.4.2 DCAP Control Topology

For advanced users of this device, the internal D-CAP3 control mode ramp can be disabled using the MODE[4] pin-strap bit. This situation requires an external RCC network to make sure of control loop stability. Place this RCC network across the output inductor. Use a range between 10 mV and 15 mV of injected RSP pin ripple. If no feedback resistor divider network is used, insert a 10-k Ω resistor between the VOUT pin and the RSP pin.

6.5 Programming

6.5.1 Programmable Pin-Strap Settings

ADDR, VSEL and MODE. Description: a 1% or better 100k Ω resistor is needed from BP to each of the three pins. The bottom resistor from each pin to ground (see **MODE, VSEL, ADDR DETECTION** section of the [Section 5.5](#) table) in conjunction with the top resistor defines each pin strap selection. The pin detection checks for external resistor divider ratio during initial power up (V_{DD} is brought down below approximately 3 V) when BP LDO output is at approximately 2.9 V.

6.5.1.1 Address Selection (ADDR) Pin

The TPS549B22 allows up to 16 different chip addresses for PMBus communication with the first 3 bits fixed as 001. The address selection process is defined by resistor divider ratio from BP pin to ADDR pin, and the address detection circuit starts to work only after the initial power up when V_{DD} has risen above the UVLO threshold. [Table 6-4](#) lists all combinations of the address selections. The 1% or better tolerance resistors with typical temperature coefficient of ± 100 ppm/ $^{\circ}$ C are recommended.

ADDR pin-strap configuration also programs the light load conduction mode.

6.5.1.2 VSEL Pin

VSEL pin strap configuration is used to program initial boot voltage value, hiccup mode and latch off mode. The initial boot voltage is used to program the main loop voltage reference point. VSEL voltage settings provide TI designated discrete internal reference voltages. [Table 6-2](#) lists internal reference voltage selections.

Table 6-2. Internal Reference Voltage Selections

| VSEL[4] | VSEL[3] | VSEL[2] | VSEL[1] | VSEL[0] | R _{VSEL} (kΩ) ⁽¹⁾ |
|----------------------|---------|---------|---------|--------------|---------------------------------------|
| 1111: 0.975 V | | | | 1: Latch-Off | Open |
| | | | | 0: Hiccup | 187 |
| 1110: 1.1992 V | | | | 1: Latch-Off | 165 |
| | | | | 0: Hiccup | 147 |
| 1101: 1.1504 V | | | | 1: Latch-Off | 133 |
| | | | | 0: Hiccup | 121 |
| 1100: 1.0996 V | | | | 1: Latch-Off | 110 |
| | | | | 0: Hiccup | 100 |
| 1011: 1.0508 V | | | | 1: Latch-Off | 90.9 |
| | | | | 0: Hiccup | 82.5 |
| 1010: 1.0000 V | | | | 1: Latch-Off | 75 |
| | | | | 0: Hiccup | 68.1 |
| 1001: 0.9492 V | | | | 1: Latch-Off | 60.4 |
| | | | | 0: Hiccup | 53.6 |
| 1000: 0.9023 V | | | | 1: Latch-Off | 47.5 |
| | | | | 0: Hiccup | 42.2 |
| 0111: 0.9004 V | | | | 1: Latch-Off | 37.4 |
| | | | | 0: Hiccup | 33.2 |
| 0110: 0.8496 V | | | | 1: Latch-Off | 29.4 |
| | | | | 0: Hiccup | 25.5 |
| 0101: 0.8008 V | | | | 1: Latch-Off | 22.1 |
| | | | | 0: Hiccup | 19.1 |
| 0100: 0.7500 V | | | | 1: Latch-Off | 16.5 |
| | | | | 0: Hiccup | 14.3 |
| 0011: 0.6992 V | | | | 1: Latch-Off | 12.1 |
| | | | | 0: Hiccup | 10 |
| 0010: 0.6504 V | | | | 1: Latch-Off | 7.87 |
| | | | | 0: Hiccup | 6.19 |
| 0001: 0.5996 V | | | | 1: Latch-Off | 4.64 |
| | | | | 0: Hiccup | 3.16 |
| 0000: 0.975 V | | | | 1: Latch-Off | 1.78 |
| | | | | 0: Hiccup | 0 |

(1) 1% or better and connect to ground

6.5.1.3 D-CAP3™ Control Mode Selection

The MODE pinstrap configuration programs the control topology and internal soft-start timing selections. The TPS549B22 device supports both D-CAP3 control mode and DCAP operation.

MODE[4] selection bit is used to set the control topology. If MODE[4] bit is 0, it selects DCAP operation. If MODE[4] bit is 1, it selects D-CAP3 control mode operation.

MODE[1] and MODE[0] selection bits are used to set the internal soft-start timing.

Table 6-3. Allowable MODE Pin Selections

| MODE[4] | MODE[3] | MODE[2] | MODE[1] | MODE[0] | R _{MODE} (kΩ) ⁽¹⁾ |
|-----------|-----------------------|----------------|-------------------------|---------|---------------------------------------|
| 1: D-CAP3 | 0: Internal Reference | 0: Internal SS | 11: 8 ms ⁽²⁾ | | 60.4 |
| | | | 10: 4 ms ⁽²⁾ | | 53.6 |
| | | | 01: 2 ms | | 47.5 |
| | | | 00: 1 ms | | 42.2 |
| 0: DCAP | 0: Internal Reference | 0: Internal SS | 11: 8 ms ⁽²⁾ | | 4.64 |
| | | | 10: 4 ms ⁽²⁾ | | 3.16 |
| | | | 01: 2 ms | | 1.78 |
| | | | 00: 1 ms | | 0 |

(1) R_{MODE} settings in lighter shade are not permitted (24 settings).

(2) See [Section 6.5.1.4](#).

6.5.1.4 Application Workaround to Support 4-ms and 8-ms SS Settings

To properly design for 4 ms and 8 ms SS settings, additional application consideration is needed. The recommended application workaround to support the 4-ms and 8-ms soft-start settings is to ensure sufficient time delay between the V_{DD} and EN_UVLO signals. The minimum delay between the rising maximum V_{DD} UVLO level and the minimum turn on threshold of EN_UVLO is at least T_{DELAY_MIN}.

$$T_{\text{DELAY_MIN}} = K \times V_{\text{REF}} \quad (1)$$

where

- K = 9 ms/V for SS setting of 4 ms
- K = 18 ms/V for SS setting of 8 ms
- V_{REF} is the internal reference voltage programmed by VSEL pin strap

For example, if SS setting is 4 ms and V_{REF} = 1 V, program the minimum delay at least 9 ms; if SS setting is 8 ms, the minimum delay must be programmed at least 18 ms. See [Figure 6-5](#) and [Figure 6-6](#) for detailed timing requirement. Because TPS549B22 is a PMBus device, the end user has the option of programming power-on delay (POD) as another workaround. Be sure to follow the same calculation to determine the needed POD (see [Section 7.18](#) and [Table 7-17](#) for detailed information).

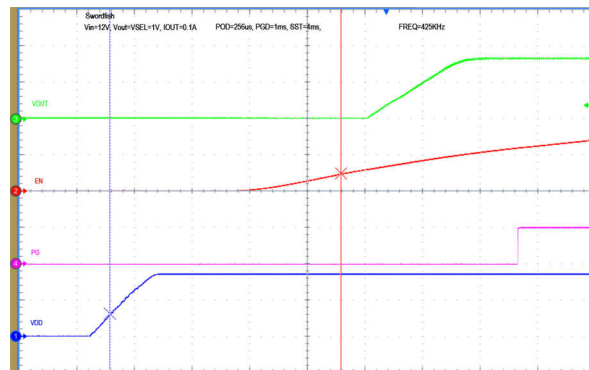


Figure 6-5. Proper Sequencing of V_{DD} and EN_UVLO to Support the use of 4-ms SS Setting

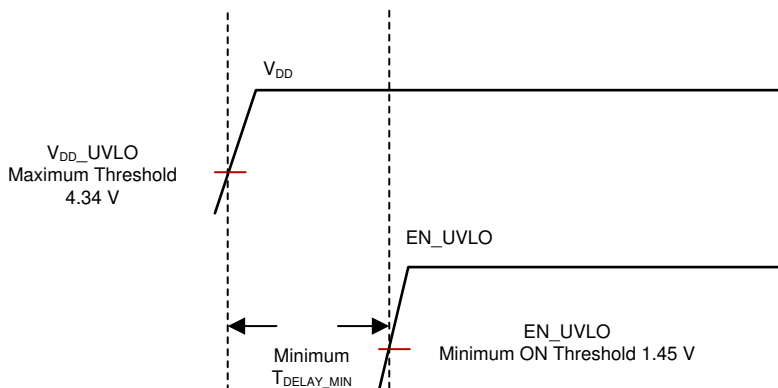


Figure 6-6. Minimum Delay Between V_{DD} and EN_UVLO to Support the use of 4-ms and 8-ms SS settings

The workaround/consideration described previously is not required for SS settings of 1 ms and 2 ms.

6.5.2 Programmable Analog Configurations

6.5.2.1 RSP/RSN Remote Sensing Functionality

RSP and RSN pins are used for remote sensing purpose. In the case where feedback resistors are required for output voltage programming, connect the RSP pin to the mid-point of the resistor divider, and connect the RSN pin to the load return. In the case where feedback resistors are not required as when the VSEL programs the output-voltage setpoint, connect the RSP pin to the positive sensing point of the load, and the RSN pin must always be connected to the load return.

RSP and RSN pins are extremely high-impedance input terminals of the true differential remote sense amplifier. The feedback resistor divider must use resistor values much less than 100 k Ω .

6.5.2.1.1 Output Differential Remote Sensing Amplifier

The examples in this section show simplified remote sensing circuitry where each example uses an internal reference of 1 V. [Figure 6-7](#) shows remote sensing without feedback resistors, with an output voltage setpoint of 1 V. [Figure 6-8](#) shows remote sensing using feedback resistors, with an output voltage setpoint of 5 V.

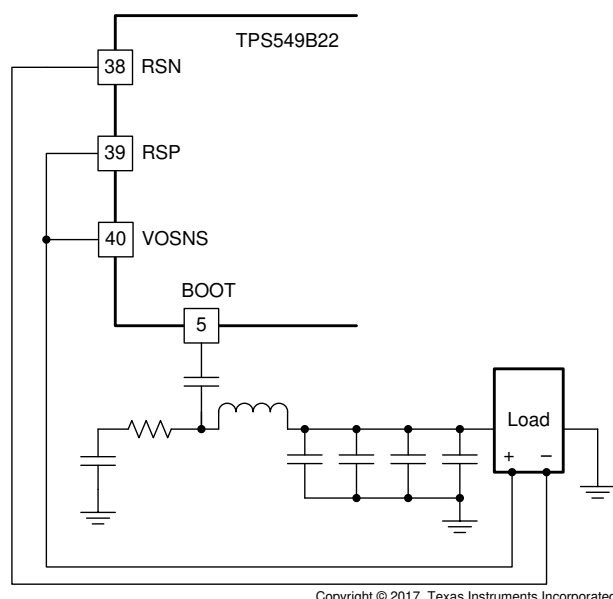


Figure 6-7. Remote Sensing Without Feedback Resistors

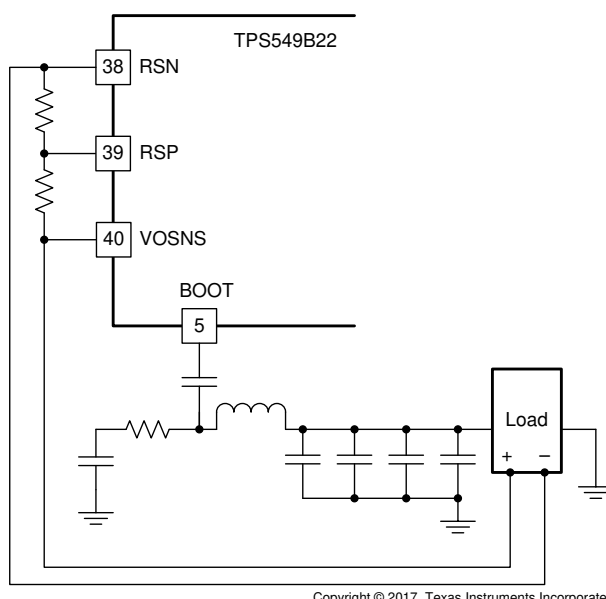


Figure 6-8. Remote Sensing With Feedback Resistors

6.5.2.2 Power Good (PGOOD Pin) Functionality

The TPS549B22 device has power-good output that registers high when switcher output is within the target. The power-good function is activated after soft start has finished. When the soft-start ramp reaches 300 mV above the internal reference voltage, SS end signal goes high to enable the PGOOD detection function. If the output voltage becomes within $\pm 8\%$ of the target value, internal comparators detect power-good state and the power-good signal becomes high after a 1 ms programmable delay. If the output voltage goes outside of $\pm 16\%$ of the target value, the power-good signal becomes low after two microsecond (2- μ s) internal delay. The open-drain power-good output must be pulled up externally. The internal N-channel MOSFET does not pull down until the V_{DD} supply is above 1.2 V.

6.5.3 PMBus Programming

TPS549B22 has seven internal custom user-accessible 8-bit registers. The PMBus interface has been designed for program flexibility, supporting direct format for write operation. Read operations are supported for both combined format and stop separated format. While there is no auto increment/decrement capability in the TPS549B22 PMBus logic, a tight software loop can be designed to randomly access the next register independent of which register was accessed first. The start and stop commands frame the data packet and the repeat start condition is allowed when necessary.

6.5.3.1 TPS549B22 Limitations to the PMBUS Specifications

TPS549B22 only recognizes seven bit addressing. This means TPS549B22 is not compatible with ten bit addressing and CBUS communication. The device can operate in standard mode (100 kbit/s), fast mode (400 kbit/s) or faster mode (1000 kbit/s).

6.5.3.2 Target Address Assignment

The seven bit target address is 001A₃A₂A₁A₀X, where A₃A₂A₁A₀ is set by the ADDR pin on the device. Bit 0 is the data direction bit, i.e. 001A₃A₂A₁A₀0 is used for write operation and 001A₃A₂A₁A₀1 is used for read operation.

6.5.3.3 PMBUS Address Selection

TPS549B22 allows up to 16 different chip addresses for PMBus communication, with the first three bits fixed as 001. The address selection process is defined by the resistor divider ratio from BP pin to ADDR pin, and the address detection circuit will start to work only after V_{DD} input supply has risen above the UVLO threshold. [Table 6-4](#) lists the divider ratio and some example resistor values. The 1% tolerance resistors with typical temperature coefficient of ± 100 ppm/ $^{\circ}$ C are recommended. Higher performance resistors can be used if tighter noise margin is required for more reliable address detection.

6.5.3.4 Supported Formats

The supported formats are described in the following subsections.

6.5.3.4.1 Direct Format — Write

The simplest format for a PMBus write is direct format. After the start condition [S], the target chip address is sent, followed by an eighth bit indicating a write. TPS549B22 then acknowledges that it is being addressed, and the controller responds with an 8 bit register address byte. The target acknowledges and the controller sends the appropriate 8-bit data byte. Once again the target acknowledges and the controller terminates the transfer with the stop condition [P].

6.5.3.4.2 Combined Format — Read

After the start condition [S], the target chip address is sent, followed by an eighth bit indicating a write. TPS549B22 then acknowledges that it is being addressed, and the controller responds with an 8-bit register address byte. The target acknowledges and the controller sends the repeated start condition [Sr]. Once again, the target chip address is sent, followed by an eighth bit indicating a read. The target responds with an acknowledge followed by previously addressed 8-bit data byte. The controller then sends a non-acknowledge (NACK) and finally terminates the transfer with the stop condition [P].

6.5.3.5 Stop Separated Reads

Stop-separated reads can also be used. This format allows a controller to set up the register address pointer for a read and return to that target at a later time to read the data. In this format the target chip address followed by a write bit are sent after a start [S] condition. TPS549B22 then acknowledges it is being addressed, and the controller responds with the 8-bit register address byte. The controller then sends a stop or restart condition and can then address another target. After performing other tasks, the controller can send a start or restart condition to the TPS549B22 with a read command. The device acknowledges this request and returns the data from the register location that had been set up previously.

Table 6-4. ADDR Pin Selection Table

| PMBus_Address<3:0> | | | | CM | RADDR (kΩ) (1% or better and connect to ground) |
|--------------------|---|---|---|---------|---|
| 1 | 1 | 1 | 1 | 1: FCCM | Open |
| | | | | 0: SKIP | 187 |
| 1 | 1 | 1 | 0 | 1: FCCM | 165 |
| | | | | 0: SKIP | 147 |
| 1 | 1 | 0 | 1 | 1: FCCM | 133 |
| | | | | 0: SKIP | 121 |
| 1 | 1 | 0 | 0 | 1: FCCM | 110 |
| | | | | 0: SKIP | 100 |
| 1 | 0 | 1 | 1 | 1: FCCM | 90.9 |
| | | | | 0: SKIP | 82.5 |
| 1 | 0 | 1 | 0 | 1: FCCM | 75 |
| | | | | 0: SKIP | 68.1 |
| 1 | 0 | 0 | 1 | 1: FCCM | 60.4 |
| | | | | 0: SKIP | 53.6 |
| 1 | 0 | 0 | 0 | 1: FCCM | 47.5 |
| | | | | 0: SKIP | 42.2 |
| 0 | 1 | 1 | 1 | 1: FCCM | 37.4 |
| | | | | 0: SKIP | 33.2 |
| 0 | 1 | 1 | 0 | 1: FCCM | 29.4 |
| | | | | 0: SKIP | 25.5 |
| 0 | 1 | 0 | 1 | 1: FCCM | 22.1 |
| | | | | 0: SKIP | 19.1 |
| 0 | 1 | 0 | 0 | 1: FCCM | 16.5 |
| | | | | 0: SKIP | 14.3 |
| 0 | 0 | 1 | 1 | 1: FCCM | 12.1 |
| | | | | 0: SKIP | 10 |
| 0 | 0 | 1 | 0 | 1: FCCM | 7.87 |
| | | | | 0: SKIP | 6.19 |
| 0 | 0 | 0 | 1 | 1: FCCM | 4.64 |
| | | | | 0: SKIP | 3.16 |
| 0 | 0 | 0 | 0 | 1: FCCM | 1.78 |
| | | | | 0: SKIP | 0 |

6.5.3.6 Supported PMBUS Commands and Registers

Only the following PMBus commands are supported by TPS549B22, and not all parts of each command are supported.

Table 6-5. PMBUS Command and Register Table

| CMD CODE | COMMAND NAME | DESCRIPTION | NVM? | TYPE | No. of DATA BYTES | BIT PATTERN |
|----------|---------------------|---|------|-----------|-------------------|---|
| 1h | OPERATION | The OPERATION command is used to turn the unit on and off in conjunction with the input from the EN pin. It is also used to cause the device to set the output voltage to the upper or lower margin voltages. | no | R/W Byte | 1 | 00XX XX00 = Turn Off 1000 XX00 = Turn on (VOUT Margin off) 1001 0100 = Turn on (VOUT Margin Low, Ignore Fault) 1001 1000 = Turn on (VOUT Margin Low, Act on Fault) 1010 0100 = Turn on (VOUT Margin High, Ignore Fault) 1010 1000 = Turn on (VOUT Margin High, Act on Fault) |
| 2h | ON_OFF_CONFIG | Configures the combination of EN pin input and serial bus commands needed to turn the unit on and off. This includes how the unit responds when power is applied. | yes | R/W Byte | 1 | 0001 0011 = Act on neither OPERATION nor EN pin 0001 0111 = Act on EN pin and ignore OPERATION 0001 1011 = Act on OPERATION and ignore EN pin 0001 1111 = Act on OPERATION and Act on EN pin (requires both) |
| 3h | CLEAR_FAULTS | Clears all fault status registers to 0x00 and deasserts SMBAlert. The "Unit is Off" bit in the status byte and "PGOOD# de-assertion" bit in the status word are not cleared when this command is issued. | no | Send Byte | 0 | No data. Write only. |
| 10h | WRITE_PROTECT | Prevents unwanted writes to the device. This register can be over-written. This is not a permanent lock. | yes | R/W Byte | 1 | 1000 0000 Only allow WRITE_PROTECT 0100 0000 Only allow WRITE_PROTECT and OPERATION 0010 0000 Only allow WRITE_PROTECT, OPERATION, ON_OFF_CONFIG and VOUT_COMMAND 0000 0000 Allow all writes |
| 11h | STORE_DEFAULT_ALL | Copies Operating Memory to matching non-volatile Default Store Memory. | no | Send Byte | 0 | No data. Write only. |
| 12h | RESTORE_DEFAULT_ALL | Restores all parameters from non-volatile Default Store Memory to Operating Memory | no | Send Byte | 0 | No data. Write only. |
| 19h | CAPABILITY | This command provides a way for a host system to determine some key capabilities of a PMBus device, including PEC, Alert and Speed. | no | Read Byte | 1 | 1101 0000 = PEC, 1-MHz bus speed, ALERT |
| 20h | VOUT_MODE | Hard coded to linear mode with exponent of -9. | no | Read Byte | 1 | 000x xxxx = Linear format. 0001 0111 = Exponent value of -9 (1.953 mV resolution) |
| 21h | VOUT_COMMAND | Output voltage setpoint. DAC resolution is 1.9531 mV and range is ~0.6 V to ~1.200 V | yes | R/W Word | 2 | 0000 0001 0011 0011 = 0.5996 V 0000 0010 0110 0110 = 1.1992 V |
| 25h | VOUT_MARGIN_HIGH | Sets the voltage to which the output is to be changed when the OPERATION command is set to "MARGIN HIGH". | no | R/W Word | 2 | 0000 0001 0011 0011 = 0.5996 V 0000 0010 0110 0110 = 1.1992 V |
| 26h | VOUT_MARGIN_LOW | Sets the voltage to which the output is to be changed when the OPERATION command is set to "MARGIN LOW". | no | R/W Word | 2 | 0000 0001 0011 0011 = 0.5996 V 0000 0010 0110 0110 = 1.1992 V |
| 78h | STATUS_BYTE | Status of all fault conditions in a data byte. | no | Read Byte | 1 | See Table 6-6 |
| 79h | STATUS_WORD | Status of all fault conditions in two data bytes. | no | Read Word | 2 | See Table 6-6 |
| 7Ah | STATUS_VOUT | Returns one byte of information relating to the status of the output voltage related faults. | no | Read Byte | 1 | See Table 6-8 |
| 7Bh | STATUS_OUT | Returns one byte of information relating to the status of the output current related faults. | no | Read Byte | 1 | See Table 6-8 |

Table 6-5. PMBUS Command and Register Table (continued)

| CMD CODE | COMMAND NAME | DESCRIPTION | NVM? | TYPE | No. of DATA BYTES | BIT PATTERN |
|----------|-----------------|--|------|-----------|-------------------|--|
| 7Eh | STATUS_CML | Status of communications, logic and memory in a data byte | no | Read Byte | 1 | XXX0 0000 0XX0 0000 = A valid or supported command has been received 1XX0 0000 = An invalid or unsupported command has been received X0X0 0000 = A valid or supported data has been received X1X0 0000 = An invalid or unsupported data has been received XX00 0000 = Packet error check has failed XX10 0000 = Packet error check has succeeded |
| D0h | MFR_SPECIFIC_00 | Customer programmable byte that does not affect chip functionality | yes | R/W Byte | 1 | Free format |
| D1h | MFR_SPECIFIC_01 | Program PGOOD delay and Power-On delay | yes | R/W Byte | 1 | |
| D2h | MFR_SPECIFIC_02 | Read SST, CM, HICLOFF, TRK and SEQ. Program Forced SKIP Soft Start. | yes | R/W Byte | 1 | |
| D3h | MFR_SPECIFIC_03 | Program Fsw and control mode, Read RC ramp | yes | R/W Byte | 1 | |
| D4h | MFR_SPECIFIC_04 | Program the D-CAP3 control mode offset | yes | R/W Byte | 1 | |
| D6h | MFR_SPECIFIC_06 | Program the V _{DD} UVLO level | yes | R/W Byte | 1 | |
| D7h | MFR_SPECIFIC_07 | Program the final tracking set point and select pseudo/external tracking | yes | R/W Byte | 1 | |
| FCh | MFR_SPECIFIC_44 | Read TI PMBUS GUI Devcie ID and IC revision code | no | Read Word | 2 | |

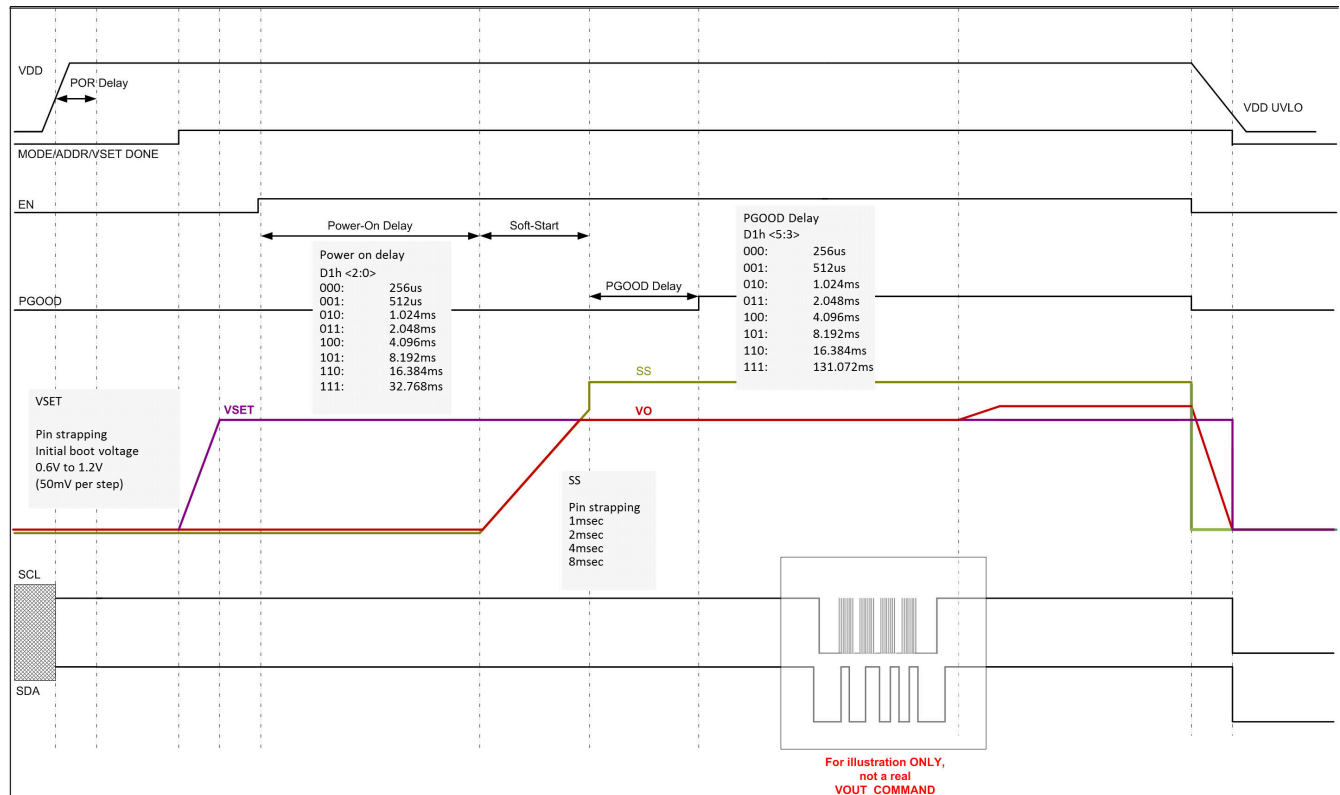


Figure 6-9. Start-up and VOUT_COMMAND Timing Diagram

Table 6-6. Status Word Summary Table

| BITS | NAME | MEANING |
|--------|---------------|--|
| Low 7 | not used | not used |
| Low 6 | OFF | Unit is not providing power to the output |
| Low 5 | VOUT_OV_FAULT | Output overvoltage |
| Low 4 | IOUT_OC_FAULT | Output overcurrent |
| Low 3 | VDD_UV_FAULT | Input V _{DD} undervoltage |
| Low 2 | TEMP | Internal die temperature. Overtemperature fault |
| Low 1 | CML | Communications, logic or memory fault |
| Low 0 | OTHER | None of the above in the PMBUS spec |
| High 7 | VOUT | Any output voltage fault or warning |
| High 6 | IOUT | Any output current fault or warning |
| High 5 | VDD_UV_FAULT | Input V _{DD} undervoltage |
| High 4 | not used | Not used |
| High 3 | PGOOD# | Power good de-asserted |
| High 2 | not used | not used |
| High 1 | not used | not used |
| High 0 | not used | not used |

Table 6-7. Status V_{OUT} Summary Table

| BITS | NAME | MEANING |
|------|----------|----------------------|
| 7 | OVF | Overvoltage fault |
| 6 | OVW | Overvoltage warning |
| 5 | UVW | Undervoltage warning |
| 4 | UVF | Undervoltage fault |
| 3 | not used | not used |
| 2 | not used | not used |
| 1 | not used | not used |

Table 6-8. Status I_{OUT} Summary Table

| BITS | NAME | MEANING |
|------|----------|---|
| 7 | OCF | Overcurrent fault |
| 6 | OCUVF | Overcurrent and output undervoltage fault |
| 5 | not used | not used |
| 4 | UCF | Negative overcurrent limit |
| 3 | not used | not used |
| 2 | not used | not used |
| 1 | not used | not used |
| 0 | not used | not used |

7 Register Maps

7.1 OPERATION Register (address = 1h)

Figure 7-1. OPERATION

| 7 | 6 | 5 | 4 | 3 | 2 | 1 | 0 |
|--------|-----|---------------|---|---|---|---|---|
| On_OFF | 0 | OPMARGIN<3:0> | | | | 0 | 0 |
| R/W | R/W | R/W | | | | R | R |

RLEGEND: R/W = Read/Write; R = Read only; -n = value after reset

Table 7-1. OPERATION

| Bit | Field | Type | Reset | Description |
|-----|---------------|------|-------|---|
| 7 | ON_OFF | R/W | 0 | 0: Turn off switching converter (if CMD=1) 1: Turn on switching converter (if CMD=1), and also enable VOUT Margin function |
| 6 | | R | 0 | |
| 5:2 | OPMARGIN<3:0> | R/W | 0 | 00xx: Turn off VOUT Margin function 0101: Turn on VOUT Margin Low and Ignore Fault 0110: Turn on VOUT Margin Low and Act On Fault 1001: Turn on VOUT Margin High and Ignore Fault 1010: Turn on VOUT Margin High and Act On Fault |
| 1 | | R | 0 | |
| 0 | | R | 0 | |

7.2 ON_OFF_CONFIG Register (address = 2h)

Figure 7-2. ON_OFF_CONFIG

| 7 | 6 | 5 | 4 | 3 | 2 | 1 | 0 |
|---|---|---|---|-----|-----|---|---|
| 0 | 0 | 0 | 1 | CMD | CP | 1 | 1 |
| R | R | R | R | R/W | R/W | R | R |

LEGEND: R/W = Read/Write; R = Read only; -n = value after reset

Table 7-2. ON_OFF_CONFIG

| Bit | Field | Type | Reset | Description |
|-----|-------|------|-------|--|
| 7 | | R | 0 | |
| 6 | | R | 0 | |
| 5 | | R | 0 | |
| 4 | | R | 1 | |
| 3 | CMD | R/W | 0 | 0: Ignore ON_OFF bit 1: Act on ON_OFF bit |
| 2 | CP | R/W | 1 | 0: Ignore ON_OFF bit 1: Act on ON_OFF bit |
| 1 | | R | 1 | |
| 0 | | R | 1 | |

7.3 CLEAR FAULTS (address = 3h)

The CLEAR_FAULTS command is used to clear any fault bits that have been set. This command simultaneously clears all bits in all status registers. At the same time, the device clears the SMB_ALERT# signal output if the device is asserting the SMB_ALERT# signal.

The CLEAR_FAULTS command does not cause a unit that has latched off for a fault condition to restart. If the fault is still present when the bit is cleared, the fault bit shall immediately be set again and the host notified by the usual means.

7.4 WRITE PROTECT (address = 10h)

Figure 7-3. WRITE PROTECT

| 7 | 6 | 5 | 4 | 3 | 2 | 1 | 0 |
|-----|-----|-----|---|---|---|---|---|
| 0 | 0 | 0 | 0 | 0 | 0 | 0 | 0 |
| R/W | R/W | R/W | R | R | R | R | R |

LEGEND: R/W = Read/Write; R = Read only; -n = value after reset

Table 7-3. WRITE PROTECT

| Bit | Field | Type | Reset | Description |
|-----|---------------|------|-------|---|
| 7:0 | WRITE_PROTECT | R/W | 0 | 00000000: Enable writes to ALL commands 00100000: Enable writes to only WRITE_PROTECT, OPERATION and ON_OFF_CONFIG and VOUT_COMMAND commands 01000000: Enable writes to only WRITE_PROTECT and OPERATION 10000000: Enable writes to only WRITE_PROTECT |

7.5 STORE_DEFAULT_ALL (address = 11h)

Store all of the current storable register settings in the EEPROM memory as the new defaults on power up.

It is permitted to use the STORE_DEFAULT_ALL command while the device is operating. However, the device can be unresponsive during the write operation with unpredictable memory storage results. TI recommends to turn the device output off before issuing this command.

EEPROM programming faults will set the 'CML' bit in the STATUS_BYTE and the 'MEM' bit in the STATUS_CML registers.

7.6 RESTORE_DEFAULT_ALL (address = 12h)

Write EEPROM data to those CSRs that: (1) have EEPROM support, and; (2) are unprotected according to current setting of WRITE_PROTECT.

It is permitted to use the RESTORE_DEFAULT_ALL command while the device is operating. However, the device can be unresponsive during the copy operation with unpredictable, undesirable or even catastrophic results. TI recommends turning the device output off before issuing this command.

No data bytes are sent, just the command code is sent.

7.7 CAPABILITY (address = 19h)

This command provides a way for a host system to determine some key capabilities of this PMBus device.

Figure 7-4. CAPABILITY

| 7 | 6 | 5 | 4 | 3 | 2 | 1 | 0 |
|-------|-------------|---|--------|---|---|---|---|
| PEC=1 | SPEED <1:0> | | ALRT=1 | 0 | 0 | 0 | 0 |
| R | R | R | R | R | R | R | R |

LEGEND: R/W = Read/Write; R = Read only; -n = value after reset

Table 7-4. CAPABILITY

| Bit | Field | Type | Reset | Description |
|-----|-------------|------|-------|---|
| 7 | PEC=1 | R | 1 | 1: Packet Error Checking is supported |
| 6:5 | SPEED <1:0> | R | 10b | 10: Maximum supported bus speed is 1 MHz |
| 4 | ALRT=1 | R | 1 | TPS549B22 has an ALERT# pin and it supports SMBus Alert Response protocol |
| 3 | | R | 0 | |
| 2 | | R | 0 | |

Table 7-4. CAPABILITY (continued)

| Bit | Field | Type | Reset | Description |
|-----|-------|------|-------|-------------|
| 1 | | R | 0 | |
| 0 | | R | 0 | |

7.8 VOUT_MODE (address = 20h)**Figure 7-5. VOUT_MODE**

| | | | | | | | |
|------------|---|---|------------------|---|---|---|---|
| 7 | 6 | 5 | 4 | 3 | 2 | 1 | 0 |
| MODE = 000 | | | Exponent = 10111 | | | | |
| R | R | R | R | R | R | R | R |

LEGEND: R/W = Read/Write; R = Read only; -n = value after reset

Table 7-5. VOUT_MODE

| Bit | Field | Type | Reset | Description |
|-----|------------|------|-------|--|
| 7:5 | MODE = 000 | R | 0 | 000: Linear Format |
| 4:0 | Exponent | R | 17h | 10111: Exponent = -9 (equivalent of 1.9531 mV/LSB) |

7.9 VOUT_COMMAND (address = 21h)

The VOUT_COMMAND command sets the output voltage in volts. The exponent is set by VOUT_MODE at -9 (equivalent of 1.9531 mV/LSB). The programmed V_{OUT} is computed as:

$$V_{OUT} = VOUT_COMMAND \times VOUT_MODE \text{ volts} = VOUT_COMMAND \times 2^{-9} \text{ V} \quad (2)$$

The support range for TPS549B22 is: 0.5996 V to 1.1992 V. It is effectively 9 bits limited to 307 to 614 decimal. Slew-rate control is provided through MODE pin.

V_{OUT} changes 1 step per t_{slew} , where t_{slew} is programmable by MODE pin: 4, 8, 16, or 32 μ s.

Figure 7-6. VOUT_COMMAND

| | | | | | | | | | | | | | | | |
|----------|---|---|---|---|---|-----|-----|-----|-----|-----|-----|-----|-----|-----|-----|
| 7 | 6 | 5 | 4 | 3 | 2 | 1 | 0 | 7 | 6 | 5 | 4 | 3 | 2 | 1 | 0 |
| Mantissa | | | | | | | | | | | | | | | |
| R | R | R | R | R | R | R/W | R/W | R/W | R/W | R/W | R/W | R/W | R/W | R/W | R/W |

LEGEND: R/W = Read/Write; R = Read only; -n = value after reset

Table 7-6. VOUT_COMMAND

| Bit | Field | Type | Reset | Description |
|-----|----------|------|-----------|---------------|
| 7:4 | Mantissa | R | 0000 | |
| 3:0 | Mantissa | R/W | 00xx | x = pin strap |
| 7:0 | Mantissa | R/W | xxxx xxxx | |

7.10 VOUT_MARGIN_HIGH (address = 25h) ®

The VOUT_MARGIN_HIGH command loads the TPS549B22 with the voltage to which the output is to be changed when the OPERATION command is set to "Margin High".

The data bytes are two bytes formatted according to the setting of the VOUT_MODE command.

The support margin range for TPS549B22 is: 0.5996 V to 1.1992 V. It is effectively 9 bits limited to 307 to 614 decimal. Slew-rate control is provided through MODE pin.

Figure 7-7. VOUT_MARGIN_HIGH

| | | | | | | | | | | | | | | | |
|----------|---|---|---|---|---|---|---|---|---|---|---|---|---|---|---|
| 7 | 6 | 5 | 4 | 3 | 2 | 1 | 0 | 7 | 6 | 5 | 4 | 3 | 2 | 1 | 0 |
| Mantissa | | | | | | | | | | | | | | | |

Figure 7-7. VOUT_MARGIN_HIGH (continued)

| | | | | | | | | | | | | | | | | | |
|---|---|---|---|---|---|-----|-----|-----|-----|-----|-----|-----|-----|-----|-----|-----|-----|
| R | R | R | R | R | R | R/W | R/W | R/W | R/W | R/W | R/W | R/W | R/W | R/W | R/W | R/W | R/W |
|---|---|---|---|---|---|-----|-----|-----|-----|-----|-----|-----|-----|-----|-----|-----|-----|

LEGEND: R/W = Read/Write; R = Read only; -n = value after reset

Table 7-7. VOUT_MARGIN_HIGH

| Bit | Field | Type | Reset | Description |
|-----|----------|------|-----------|---------------|
| 7:4 | Mantissa | R | 0000 | |
| 3:0 | Mantissa | R/W | 00xx | x = pin strap |
| 7:0 | Mantissa | R/W | xxxx xxxx | |

7.11 VOUT_MARGIN_LOW (address = 26h)

The VOUT_MARGIN_LOW command loads the TPS549B22 with the voltage to which the output is to be changed when the OPERATION command is set to “Margin Low”.

The data bytes are two bytes formatted according to the setting of the VOUT_MODE command.

The support margin range for TPS549B22 is: 0.5996 V to 1.1992 V. It is effectively 9-bits limited to 307 to 614 decimal. Slew-rate control is provided through MODE pin.

Figure 7-8. VOUT_MARGIN_LOW:

| | | | | | | | | | | | | | | | |
|----------|---|---|---|---|---|-----|-----|-----|-----|-----|-----|-----|-----|-----|-----|
| 7 | 6 | 5 | 4 | 3 | 2 | 1 | 0 | 7 | 6 | 5 | 4 | 3 | 2 | 1 | 0 |
| Mantissa | | | | | | | | | | | | | | | |
| R | R | R | R | R | R | R/W | R/W | R/W | R/W | R/W | R/W | R/W | R/W | R/W | R/W |

LEGEND: R/W = Read/Write; R = Read only; -n = value after reset

Table 7-8. VOUT_MARGIN_LOW:

| Bit | Field | Type | Reset | Description |
|-----|----------|------|-----------|---------------|
| 7:4 | Mantissa | R | 0000 | |
| 3:0 | Mantissa | R/W | 00xx | x = pin strap |
| 7:0 | Mantissa | R/W | xxxx xxxx | |

7.12 STATUS_BYTE (address = 78h)

Figure 7-9. STATUS_BYTE

| | | | | | | | |
|----------|-----|---------|---------|--------|------|-----|-------|
| 7 | 6 | 5 | 4 | 3 | 2 | 1 | 0 |
| Not used | OFF | VOUT_OV | IOUT_OC | VDD_UV | TEMP | CML | OTHER |
| R | R | R | R | R | R | R | R |

LEGEND: R/W = Read/Write; R = Read only; -n = value after reset

Table 7-9. STATUS_BYTE

| Bit | Field | Type | Reset | Description |
|-----|----------|------|-------|--|
| 7 | Not Used | R | N/A | Not used |
| 6 | OFF | R | N/A | 0: IC is on. This includes the following fault response conditions where the output is still being actively driven, such as OVP and OCF. 1: IC is off. This includes two conditions. One is unit is commanded off via OPERATION/ON_OFF_CONFIG and the other is unit is commanded on via OPERATION/ON_OFF_CONFIG; but, due to fault response the output has been tri-stated by UVF, OT and UVLO. |
| 5 | VOUT_OV | R | N/A | 0: An output overvoltage fault has not occurred 1: An output overvoltage fault has occurred |

Table 7-9. STATUS_BYTE (continued)

| Bit | Field | Type | Reset | Description |
|-----|---------|------|-------|--|
| 4 | IOUT_OC | R | N/A | 0: An output overcurrent fault has not occurred 1: An output overcurrent fault has occurred |
| 3 | VDD_UV | R | N/A | 0: An input undervoltage fault has not occurred 1: An input undervoltage fault has occurred |
| 2 | TEMP | R | N/A | 0: A temperature fault or warning has not occurred 1: A temperature fault or warning has occurred |
| 1 | CML | R | N/A | 0: A communications, memory or logic fault has not occurred 1: A communications, memory or logic fault has occurred |
| 0 | OTHER | R | N/A | 0: A fault or warning not listed above has not occurred 1: A fault of warning not listed above has occurred |

7.13 STATUS_WORD (High Byte) (address = 79h)**Figure 7-10. STATUS_WORD (High Byte)**

| 7 | 6 | 5 | 4 | 3 | 2 | 1 | 0 |
|------|------|-----|----------|--------|----------|---|---|
| VOUT | IOUT | VDD | Not Used | PGOOD# | Not Used | | |
| R | R | R | R | R | R | | |

LEGEND: R/W = Read/Write; R = Read only; -n = value after reset

Table 7-10. STATUS_WORD (High Byte)

| Bit | Field | Type | Reset | Description |
|-----|----------|------|-------|--|
| 7 | VOUT | R | N/A | 0: An output voltage fault or warning has not occurred 1: An output voltage fault or warning has occurred |
| 6 | IOUT | R | N/A | 0: An output current fault has not occurred 1: An output current fault has occurred |
| 5 | VDD | R | N/A | A VDD voltage fault has not occurred 1: A VDD voltage fault has occurred |
| 4 | Not Used | R | N/A | Not Used |
| 3 | PGOOD# | R | N/A | 0: PGOOD pin is at logic high 1: PGOOD pin is at logic high |
| 2:0 | Not Used | R | N/A | Not used |

7.14 STATUS_VOUT (address = 7Ah)

Figure 7-11. STATUS_VOUT

| 7 | 6 | 5 | 4 | 3 | 2 | 1 | 0 |
|-----|-----|-----|-----|----------|---|---|---|
| OVF | OVW | UVW | UVF | Not Used | | | |
| R | R | R | R | R | | | |

LEGEND: R/W = Read/Write; R = Read only; -n = value after reset

Table 7-11. STATUS_VOUT

| Bit | Field | Type | Reset | Description |
|-----|----------|------|-------|--|
| 7 | OVF | R | N/A | 0: An output overvoltage fault has not occurred 1: An output overvoltage fault has occurred |
| 6 | OVW | R | N/A | 0: An output overvoltage warning has not occurred 1: An output overvoltage warning has occurred |
| 5 | UVW | R | N/A | 0: An output undervoltage warning has not occurred 1: An output undervoltage warning has occurred |
| 4 | UVF | R | N/A | 0: An output undervoltage fault has not occurred 1: An output undervoltage fault has occurred |
| 3:0 | Not Used | R | N/A | Not Used |

7.15 STATUS_IOUT (address = 7Bh)

Figure 7-12. STATUS_IOUT

| 7 | 6 | 5 | 4 | 3 | 2 | 1 | 0 |
|-----|-------|----------|-----|----------|---|---|---|
| OCF | OCUVF | Not Used | UCF | Not Used | | | |
| R | R | R | R | R | | | |

LEGEND: R/W = Read/Write; R = Read only; -n = value after reset

Table 7-12. STATUS_IOUT

| Bit | Field | Type | Reset | Description |
|-----|----------|------|-------|--|
| 7 | OCF | R | N/A | 0: An output positive overcurrent fault has not occurred 1: An output positive overcurrent fault has occurred |
| 6 | OCUVF | R | N/A | 0: A simultaneous output positive overcurrent and undervoltage fault has not occurred 1: A simultaneous output positive overcurrent and undervoltage fault has occurred |
| 5 | Not Used | R | N/A | Not Used |
| 4 | UCF | R | N/A | 0: An output negative overcurrent fault has not occurred 1: An output negative overcurrent fault has occurred |
| 3:0 | Not Used | R | N/A | Not Used |

7.16 STATUS_CML (address = 7Eh)

Figure 7-13. STATUS_CML

| 7 | 6 | 5 | 4 | 3 | 2 | 1 | 0 |
|------|------|-----|----------|---|---|-----|----------|
| COMM | DATA | PEC | Not Used | | | OTH | Not Used |
| R | R | R | R | | | R | R |

LEGEND: R/W = Read/Write; R = Read only; -n = value after reset

Table 7-13. STATUS_CML

| Bit | Field | Type | Reset | Description |
|-----|----------|------|-------|---|
| 7 | COMM | R | N/A | 0: A valid or supported command has been received 1: An invalid or unsupported command has been received |
| 6 | DATA | R | N/A | 0: A valid or supported data has been received 1: An invalid or unsupported data has been received |
| 5 | PEC | R | N/A | 0: Packet Error Check has failed 1: Packet Error Check has succeeded |
| 4:2 | Not Used | R | N/A | Not Used |
| 1 | OTH | R | N/A | 0: A communication fault other than the ones listed in this table has not occurred 1: A communication fault other than the ones listed in this table has occurred. Currently, this bit is only set for too many data bytes |
| 0 | Not Used | R | N/A | Not Used |

7.17 MFR_SPECIFIC_00 (address = D0h)

Figure 7-14. MFR_SPECIFIC_00

| 7 | 6 | 5 | 4 | 3 | 2 | 1 | 0 |
|------------------|---|---|---|---|---|---|---|
| USER SCRATCH PAD | | | | | | | |
| R/W | | | | | | | |

LEGEND: R/W = Read/Write; R = Read only; -n = value after reset

Table 7-14. MFR_SPECIFIC_00

| Bit | Field | Type | Reset | Description |
|-----|------------------|------|-------|--|
| 7:0 | USER SCRATCH PAD | R/W | 0 | The MFR_SPECIFIC_00 is a user-accessible register dedicated as a user scratch pad. |

7.18 MFR_SPECIFIC_01 (address = D1h)

Figure 7-15. MFR_SPECIFIC_01

| 7 | 6 | 5 | 4 | 3 | 2 | 1 | 0 |
|---|---|-----|---|---|-----|---|---|
| 0 | 0 | PGD | | | POD | | |
| R | R | R/W | | | R/W | | |

LEGEND: R/W = Read/Write; R = Read only; -n = value after reset

Table 7-15. MFR_SPECIFIC_01

| Bit | Field | Type | Reset | Description |
|-----|-------|------|-------|---|
| 7:6 | | R | 00b | The MFR_SPECIFIC_01 is a user-accessible register dedicated for configuring the PGOOD delay and Power-On Delay functions. (Refer to Table 7-16 and Table 7-17) |
| 5:3 | PGD | R/W | 010b | |
| 2:0 | POD | R/W | 010b | |

Table 7-16. PGD[2:0]

| PGD[2] | PGD[1] | PGD[0] | PGood Delay |
|--------|--------|--------|-------------|
| 0 | 0 | 0 | 256 μ s |
| 0 | 0 | 1 | 512 μ s |
| 0 | 1 | 0 | 1.024 ms |
| 0 | 1 | 1 | 2.048 ms |
| 1 | 0 | 0 | 4.096 ms |
| 1 | 0 | 1 | 8.192 ms |
| 1 | 1 | 0 | 16.384 ms |
| 1 | 1 | 1 | 131.072 ms |

Table 7-17. POD[2:0]

| POD[2] | POD[1] | POD[0] | Power-On Delay |
|--------|--------|--------|----------------|
| 0 | 0 | 0 | 256 μ s |
| 0 | 0 | 1 | 512 μ s |
| 0 | 1 | 0 | 1.024 ms |
| 0 | 1 | 1 | 2.048 ms |
| 1 | 0 | 0 | 4.096 ms |
| 1 | 0 | 1 | 8.192 ms |
| 1 | 1 | 0 | 16.384 ms |
| 1 | 1 | 1 | 32.768 ms |

7.19 MFR_SPECIFIC_02 (address = D2h)

The MFR_SPECIFIC_02 register allows the user to read the configuration of various pin-strap features and/or overwrite them. Note that any overwritten values here are only good until the next power-on-reset, when all parameters revert back to their pin-strap configurations.

Figure 7-16. MFR_SPECIFIC_02

| 7 | 6 | 5 | 4 | 3 | 2 | 1 | 0 |
|-----|-----|---|-------------|-----|---|---------|-----|
| TRK | SEQ | 0 | FORCESKIPSS | SST | | HICLOFF | CM |
| R/W | R/W | R | R/W | R/W | | R/W | R/W |

LEGEND: R/W = Read/Write; R = Read only; -n = value after reset

Table 7-18. MFR_SPECIFIC_02

| Bit | Field | Type | Reset | Description |
|-----|-------------|------|-------|---|
| 7 | TRK | R/W | P | This bit indicates whether the device is using internal or external reference voltage tracking. It will initially be loaded and reflect the value of the pin strap; but, can also be overwritten by PMBus. 0: No tracking. The device will use internal reference voltage. 1: External tracking. |
| 6 | SEQ | R/W | P | This bit indicates whether the device is using internal or external soft-start ramp. It will initially be loaded and reflect the value of the pin strap; but, can also be overwritten by PMBus. 0: No sequencing. The device will use the internal soft start ramp. 1: Sequencing |
| 5 | | R | 0 | |
| 4 | FORCESKIPSS | R/W | 1 | This bit (when set) allows the user to force Soft-start to always use SKIP mode; regardless of the CM pin strap. 0: CM bit controls whether to operate in SKIP or FCCM mode during and after soft start. 1: Soft start is forced to operate in SKIP mode, then CM bit controls the mode after soft start. |
| 3:2 | SST | R/W | P | These bits indicate the time the device takes to ramp the output voltage up to regulation (that is, soft-start). The field will initially be loaded and reflect the value of the pin strap; but, can also be overwritten by PMBus. (Refer to Table 7-19) |
| 1 | HICLOFF | R/W | P | This bit indicates the response the device will take upon an output undervoltage fault. There are two fault response options which are enforced by the analog circuits: Hiccup or Latch-off. The bit value will initially be loaded and reflect the value of the pin strap; but, can also be overwritten by PMBus. 0: Hiccup after UVP fault. 1: Latch off after UVP fault. |
| 0 | CM | R/W | P | This bit indicates the conduction mode for the device. The bit value will initially be loaded and reflect the value of the pin strap; but, can also be overwritten by PMBus. 0: SKIP 1: FCCM |

Table 7-19. SST

| SST[1] | SST[0] | Soft-start time |
|--------|--------|-----------------|
| 0 | 0 | 1 ms |
| 0 | 1 | 2 ms |
| 1 | 0 | 4 ms |
| 1 | 1 | 8 ms |

7.20 MFR_SPECIFIC_03 (address = D3h)

The MFR_SPECIFIC_03 register allows the user to read the configuration of the pin-strap feature (and/or overwrite it), as well configure the Ramp Generator and the PWM switching frequency.

Figure 7-17. MFR_SPECIFIC_03

| 7 | 6 | 5 | 4 | 3 | 2 | 1 | 0 |
|--------|---|------|---|---|-----|---|---|
| D-CAP3 | 0 | RCSP | | 0 | FS | | |
| R/W | R | R/W | | R | R/W | | |

LEGEND: R/W = Read/Write; R = Read only; -n = value after reset

Table 7-20. MFR_SPECIFIC_03 Field Descriptions

| Bit | Field | Type | Reset | Description |
|-----|--------|------|-------|--|
| 7 | D-CAP3 | R/W | P | This bit allows the user to read/configure the device's internal DCAP-3 control mode. It is initially loaded and reflects the value of the pin strap, but can also be overwritten by PMBus. 0: Internal D-CAP3 is disabled (ramp injection is off). 1: Internal D-CAP3 is enabled (ramp injection is on) |
| 6 | | R | 0 | |
| 5:4 | RCSP | R/W | P | These bits allow the user to read/configure the D-CAP3 ramp generator's resistor value selection. (Refer to Table 7-21 .) |
| 3 | | R | 0 | |
| 2:0 | FS | R/W | 011b | These bits allow the user to read/configure the device's PWM switching frequency. (Refer to Table 7-22) |

Table 7-21. RCSP

| RCSP[1] | RCSP[0] | Resistor Selection |
|---------|---------|--------------------|
| 0 | 0 | Resistor ÷ 2 |
| 0 | 1 | Resistor ÷ 1 |
| 1 | 0 | Resistor × 2 |
| 1 | 1 | Resistor × 3 |

Table 7-22. FS

| FS[2] | FS[1] | FS[0] | Switching Frequency |
|-------|-------|-------|---------------------|
| 0 | 0 | 0 | 315 kHz |
| 0 | 0 | 1 | 425 kHz |
| 0 | 1 | 0 | 550 kHz |
| 0 | 1 | 1 | 650 KHz |
| 1 | 0 | 0 | 825 KHz |
| 1 | 0 | 1 | 900 KHz |
| 1 | 1 | 0 | 1.025 MHz |
| 1 | 1 | 1 | 1.125 MHz |

7.21 MFR_SPECIFIC_04 (address = D4h)

The MFR_SPECIFIC_04 register allows the user to configure the D-CAP control scheme offset reduction and fixed offset correction.

Figure 7-18. MFR_SPECIFIC_04

| 7 | 6 | 5 | 4 | 3 | 2 | 1 | 0 |
|----------------|------------------|---|---|---|---|---|---|
| DCAP3OffsetSel | DCAP3Offset[1:0] | | 0 | 0 | 0 | 0 | 0 |
| R/W | R/W | | R | R | R | R | R |

LEGEND: R/W = Read/Write; R = Read only; -n = value after reset

Table 7-23. MFR_SPECIFIC_04

| Bit | Field | Type | Reset | Description |
|-----|----------------|------|-------|---|
| 7 | DCAP3OffsetSel | R/W | 1 | This bit allows the user to read/configure the D-CAP loop's offset reduction scheme. 0: Select DCAP loop manual offset reduction circuit. 1: Select DCAP loop automatic offset reduction circuit. |
| 6:5 | DCAP3Offset | R/W | 0 | These bits allow the user to read/configure the D-CAP3 offset correction if and only if DCAP3OffsetSel = 0 (refer to Table 7-24). |
| 4:0 | | R | 0 | |

Table 7-24. DCAP3OFFSET

| DCAP3Offset[1] | DCAP3Offset[0] | Additional Offset Correction Voltage Added |
|----------------|----------------|--|
| 0 | 0 | 0 mV |
| 0 | 1 | + 2 mV |
| 1 | 0 | + 4 mV |
| 1 | 1 | + 6 mV |

7.22 MFR_SPECIFIC_06 (address = D6h)

The MFR_SPECIFIC_06 is a user-accessible register dedicated for configuring the V_{DD} UVLO threshold.

Figure 7-19. MFR_SPECIFIC_06

| 7 | 6 | 5 | 4 | 3 | 2 | 1 | 0 |
|---|---|---|---|---|--------------|---|---|
| 0 | 0 | 0 | 0 | 0 | VDDUVLO[2:0] | | |
| R | R | R | R | R | R/W | | |

LEGEND: R/W = Read/Write; R = Read only; -n = value after reset

Table 7-25. MFR_SPECIFIC_06

| Bit | Field | Type | Reset | Description |
|-----|---------|------|-------|--|
| 7:3 | | R | 0 | |
| 2:0 | VDDUVLO | R/W | 101b | These bits allow the user to read/configure the device V_{DD} ULVO threshold (refer to Table 7-26). |

Table 7-26. VDDUVLO

| VDDUVLO[2] | VDDUVLO[1] | VDDUVLO[0] | VDD UVLO threshold |
|------------|------------|------------|--------------------|
| 0 | X | X | 10.2 volts |
| 1 | 0 | 0 | 2.8 volts |
| 1 | 0 | 1 | 4.25 volts |
| 1 | 1 | 0 | 6 volts |
| 1 | 1 | 1 | 8.1 volts |

7.23 MFR_SPECIFIC_07 (address = D7h)

The MFR_SPECIFIC_07 is a user-accessible register dedicated for configuring the device's PGOOD threshold and external tracking options.

Figure 7-20. MFR_SPECIFIC_07

| 7 | 6 | 5 | 4 | 3 | 2 | 1 | 0 |
|-------|-------|---|-----------|-------------|---|---|---|
| VPBAD | SPARE | 0 | TRKOPTION | VTRKIN[3:0] | | | |
| R/W | R/W | R | R/W | R/W | | | |

LEGEND: R/W = Read/Write; R = Read only; -n = value after reset

Table 7-27. MFR_SPECIFIC_07

| Bit | Field | Type | Reset | Description |
|-----|-----------|------|-------|---|
| 7 | VPBAD | R/W | 1 | This bit allows the user to read/configure the PGOOD high and low thresholds. 0: PGOOD high and low thresholds are +16% and -16%, respectively 1: PGOOD high and low thresholds are +20% and -32%, respectively |
| 6 | SPARE | R/W | 0 | This bit allows the user to read/configure an EEPROM backed SPARE bit and corresponding digital block output. 0: pSPARE = 0 1: pSPARE = 1 |
| 5 | | R | 0 | |
| 4 | TRKOPTION | R/W | 0 | This bit allows the user to read/control whether the external TRKIN is enabled by a 425 mV threshold, or not. 0: TRKIN voltage must be above 425mV (that is, TRKINOK = 1) before switcher can be enabled. 1: TRKIN voltage does not need to be above 425mV before switcher can be enabled. |
| 3:0 | VTRKIN | R/W | 1111b | These bits allow the user to read/configure the device's final TRKIN target voltage for external tracking operation. (Refer to Table 7-28) |

Table 7-28. VTRKIN

| VTRKIN[3] | VTRKIN[2] | VTRKIN[1] | VTRKIN[0] | Final TRKIN target voltage for external tracking operation |
|-----------|-----------|-----------|-----------|--|
| 0 | 0 | 0 | 0 | 500 mV |
| 0 | 0 | 0 | 1 | 550 mV |
| 0 | 0 | 1 | 0 | 600 mV |
| 0 | 0 | 1 | 1 | 650 mV |
| 0 | 1 | 0 | 0 | 700 mV |
| 0 | 1 | 0 | 1 | 750 mV |
| 0 | 1 | 1 | 0 | 800 mV |
| 0 | 1 | 1 | 1 | 850 mV |
| 1 | 0 | 0 | 0 | 900 mV |
| 1 | 0 | 0 | 1 | 950 mV |
| 1 | 0 | 1 | 0 | 1.00 V |
| 1 | 0 | 1 | 1 | 1.05 V |
| 1 | 1 | 0 | 0 | 1.10 V |
| 1 | 1 | 0 | 1 | 1.15 V |
| 1 | 1 | 1 | 0 | 1.20 V |
| 1 | 1 | 1 | 1 | 1.25 V |

7.24 MFR_SPECIFIC_44 (address = FCh)

The DEVICE_CODE command returns a 12-bit unique identifier code for the device and a 4 bit device revision code.

Figure 7-21. MFR_SPECIFIC_44

| | | | | | | | | | | | | | | | |
|-----------------|---|---|---|---|---|---|---|---|---|---|---|---------------|---|---|---|
| 7 | 6 | 5 | 4 | 3 | 2 | 1 | 0 | 7 | 6 | 5 | 4 | 3 | 2 | 1 | 0 |
| Identifier Code | | | | | | | | | | | | Revision Code | | | |
| R | R | R | R | R | R | R | R | R | R | R | R | R | R | R | R |

LEGEND: R/W = Read/Write; R = Read only; -n = value after reset

Table 7-29. MFR_SPECIFIC_44

| Bit | Field | Type | Reset | Description |
|-----|-----------------|------|-------|--|
| 7:0 | Identifier Code | R | 02h | 0000 0010 0000b – Device ID Code Identifier for TPS549B22. |
| 7:4 | | R | 0 | |
| 3:0 | Revision Code | R | 0 | 1000b - Revision Code (first silicon starts at 0) |

8 Application and Implementation

Note

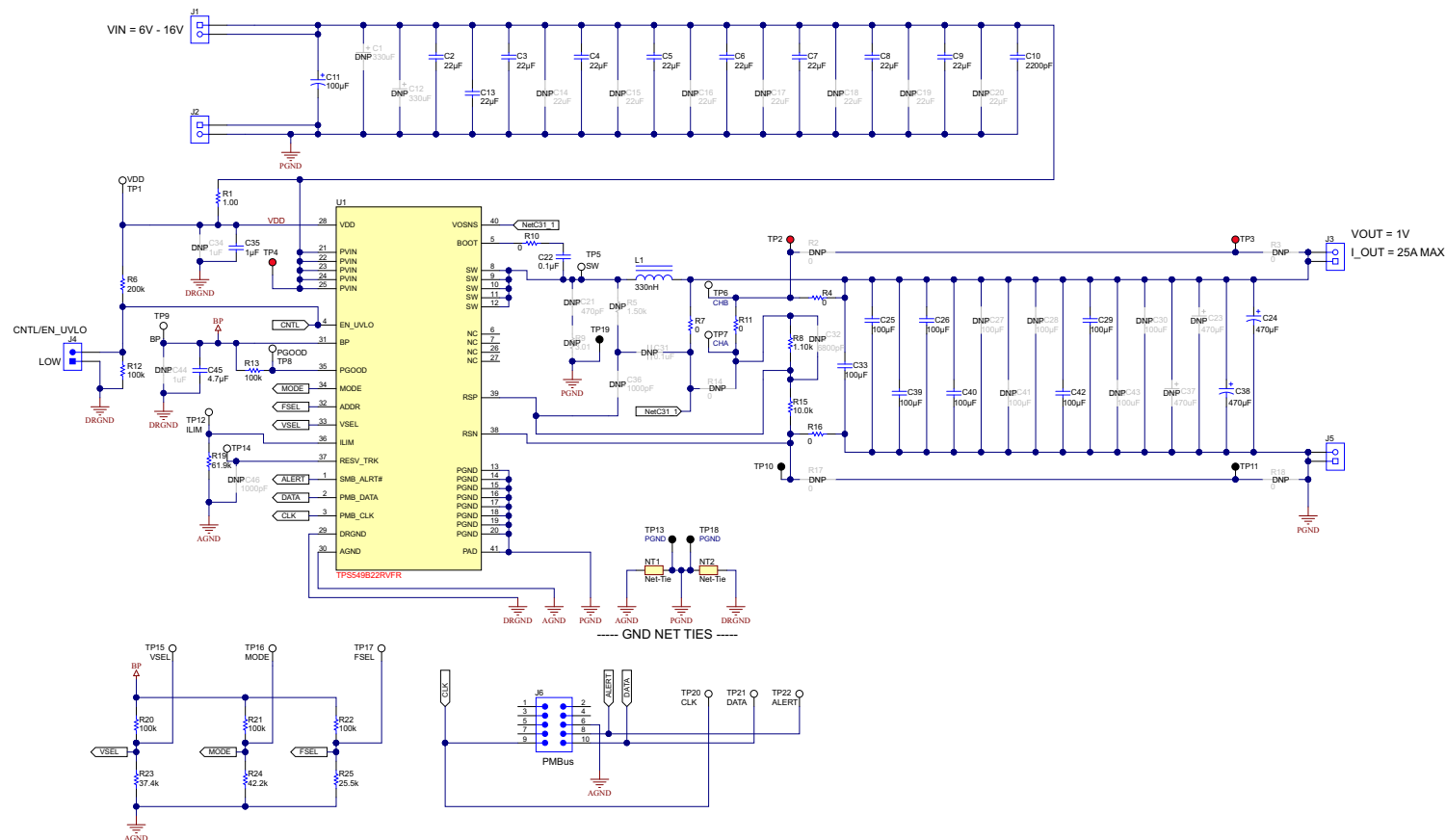
Information in the following applications sections is not part of the TI component specification, and TI does not warrant its accuracy or completeness. TI's customers are responsible for determining suitability of components for their purposes, as well as validating and testing their design implementation to confirm system functionality.

8.1 Application Information

The TPS549B22 device is a highly-integrated synchronous step-down DC-DC converter with PMBus features and capabilities. This device is used to convert a higher DC input voltage to a lower DC output voltage, with a maximum output current of 25 A. Use the following design procedure to select key component values for this family of devices.

8.2 Typical Applications

8.2.1 TPS549B22 1.5-V to 18-V Input, 1-V Output, 25-A Converter



Copyright © 2017, Texas Instruments Incorporated

Figure 8-1. Typical Application Schematic

8.2.2 Design Requirements

For this design example, use the input parameters shown in [Table 8-1](#).

Table 8-1. Design Example Specifications

| PARAMETER | | TEST CONDITION | MIN | TYP | MAX | UNIT |
|-------------------------|-------------------------------|-------------------------------|-----|-----|------|------|
| V _{IN} | Input voltage | | 5 | 12 | 18 | V |
| V _{IN(ripple)} | Input ripple voltage | I _{OUT} = 25 A | | | 0.4 | V |
| V _{OUT} | Output voltage | | | 1 | | V |
| | Line regulation | 5 V ≤ V _{IN} ≤ 18 V | | | 0.5% | |
| | Load regulation | 0 V ≤ I _{OUT} ≤ 25 A | | | 0.5% | |
| V _{PP} | Output ripple voltage | I _{OUT} = 25 A | | 10 | | mV |
| V _{OVER} | Transient response overshoot | I _{STEP} = 15 A | | 30 | | mV |
| V _{UNDER} | Transient response undershoot | I _{STEP} = 15 A | | 30 | | mV |
| I _{OUT} | Output current | 5 V ≤ V _{IN} ≤ 18 V | | | 25 | A |
| t _{SS} | Soft-start time | | | 1 | | ms |
| I _{OC} | Overcurrent trip point | | | 32 | | A |
| η | Peak efficiency | I _{OUT} = 7 A, | | 90% | | |
| f _{SW} | Switching frequency | | | 650 | | kHz |

8.2.3 Detailed Design Procedure

8.2.3.1 Custom Design With WEBENCH® Tools

[Click here](#) to create a custom design using the TPS549B22 device with the WEBENCH® Power Designer.

1. Start by entering the input voltage (V_{IN}), output voltage (V_{OUT}), and output current (I_{OUT}) requirements.
2. Optimize the design for key parameters such as efficiency, footprint, and cost using the optimizer dial.
3. Compare the generated design with other possible solutions from Texas Instruments.

The WEBENCH Power Designer provides a customized schematic along with a list of materials with real-time pricing and component availability.

In most cases, these actions are available:

- Run electrical simulations to see important waveforms and circuit performance
- Run thermal simulations to understand board thermal performance
- Export customized schematic and layout into popular CAD formats
- Print PDF reports for the design, and share the design with colleagues

Get more information about WEBENCH tools at www.ti.com/WEBENCH.

8.2.3.2 Switching Frequency Selection

The default switching frequency of the TPS549B22 device is 650 kHz. There are a total of 8 switching frequency settings that can be programmed via PMBus interface. For each switching frequency setting, there are 4 internal ramp compensations (D-CAP3 control mode) to choose from, also via PMBus. When D-CAP3 control mode is selected (preferred), the internal ramp compensation is used for stabilizing the converter design. The ramp is a function of the switching frequency and duty cycle range (the output voltage to input voltage ratio). [Table 8-2](#) summarizes the ramp choices using these functions.

Table 8-2. Switching Frequency Selection

| SWITCHING FREQUENCY SETTING (f _{sw}) (kHz) | RAMP SELECT OPTION | TIME CONSTANT t (μs) | V _{OUT} RANGE (FIXED V _{IN} = 12 V) | | DUTY CYCLE RANGE (V _{OUT} /V _{IN}) (%) | |
|--|--------------------------|----------------------------|--|-----|--|------|
| | | | MIN | MAX | MIN | MAX |
| 315, 425 | R/2 | 9 | 0.6 | 0.9 | 5 | 7.5 |
| | R × 1 | 16.8 | 0.9 | 1.5 | 7.5 | 12.5 |
| | R × 2 | 32.3 | 1.5 | 2.5 | 12.5 | 21 |
| | R × 3 | 55.6 | 2.5 | 5.5 | >21 | |
| 550, 650 | R/2 | 7 | 0.6 | 0.9 | 5 | 7.5 |
| | R × 1 | 13.5 | 0.9 | 1.5 | 7.5 | 12.5 |
| | R × 2 | 25.9 | 1.5 | 2.5 | 12.5 | 21 |
| | R × 3 | 44.5 | 2.5 | 5.5 | >21 | |
| 825, 900 | R/2 | 5.6 | 0.6 | 0.9 | 5 | 7.5 |
| | R × 1 | 10.4 | 0.9 | 1.5 | 7.5 | 12.5 |
| | R × 2 | 20 | 1.5 | 2.5 | 12.5 | 21 |
| | R × 3 | 34.4 | 2.5 | 5.5 | >21 | |
| 1.025, 1.225 MHz | R/2 | 3.8 | 0.6 | 0.9 | 5 | 7.5 |
| | R × 1 | 7.1 | 0.9 | 1.5 | 7.5 | 12.5 |
| | R × 2 | 13.6 | 1.5 | 2.5 | 12.5 | 21 |
| | R × 3 | 23.3 | 2.5 | 5.5 | >21 | |

8.2.3.3 Inductor Selection

To calculate the value of the output inductor, use [Equation 3](#). The coefficient K_{IND} represents the amount of inductor ripple current relative to the maximum output current. The output capacitor filters the inductor ripple current. Therefore, choosing a high inductor ripple current impacts the selection of the output capacitor because the output capacitor must have a ripple current rating equal to or greater than the inductor ripple current. In general, maintain a K_{IND} coefficient between 0 and 40 for balanced performance. Using this target ripple current, the required inductor size can be calculated as shown in [Equation 3](#)

$$L_1 = \frac{V_{OUT}}{(V_{IN(max)} \times f_{SW})} \times \frac{V_{IN} - V_{OUT}}{(I_{OUT(max)} \times K_{IND})} = \frac{1 \text{ V} \times (18 \text{ V} - 1 \text{ V})}{(18 \text{ V} \times 650 \text{ kHz} \times 25 \text{ A} \times 0.2)} = 0.29 \mu\text{H} \quad (3)$$

Selecting a K_{IND} of 0.2, the target inductance L₁ = 290 nH. Using the next standard value, the 330 nH is chosen in this application for the high current rating, low DCR, and small size. The inductor ripple current, RMS current, and peak current can be calculated using [Equation 4](#), [Equation 5](#) and [Equation 6](#). Use these values to select an inductor with approximately the target inductance value, and current ratings that allow normal operation with some margin.

$$I_{RIPPLE} = \frac{V_{OUT}}{(V_{IN(max)} \times f_{SW})} \times \frac{V_{IN(max)} - V_{OUT}}{L_1} = \frac{1 \text{ V} \times (18 \text{ V} - 1 \text{ V})}{18 \text{ V} \times 650 \text{ kHz} \times 330 \text{ nH}} = 4.4 \text{ A} \quad (4)$$

$$I_{L(rms)} = \sqrt{(I_{OUT})^2 + \frac{1}{12} \times (I_{RIPPLE})^2} = 25 \text{ A} \quad (5)$$

$$I_{L(peak)} = (I_{OUT}) + \frac{1}{2} \times (I_{RIPPLE}) = 27.2 \text{ A} \quad (6)$$

8.2.3.4 Output Capacitor Selection

There are three primary considerations for selecting the value of the output capacitor. The output capacitor affects three criteria:

- Stability
- Regulator response to a change in load current or load transient
- Output voltage ripple

These three considerations are important when designing regulators that must operate where the electrical conditions are unpredictable. The output capacitance needs to be selected based on the most stringent of these three criteria.

8.2.3.4.1 Minimum Output Capacitance to Make Sure of Stability

To prevent sub-harmonic multiple pulsing behavior, TPS549B22 application designs must strictly follow the small signal stability considerations described in [Equation 7](#).

$$C_{OUT(min)} > \frac{t_{ON}}{2} \times \frac{8\tau}{L_{OUT}} \times \frac{V_{REF}}{V_{OUT}} \quad (7)$$

where

- $C_{OUT(min)}$ is the minimum output capacitance needed to meet the stability requirement of the design
- t_{ON} is the on-time information based on the switching frequency and duty cycle (in this design, 128 ns)
- τ is the ramp compensation time constant of the design based on the switching frequency and duty cycle, (in this design, 25.9 μ s, refer to [Table 8-2](#))
- L_{OUT} is the output inductance (in the design, 0.33 μ H)
- V_{REF} is the user-selected reference voltage level (in this design, 1 V)
- V_{OUT} is the output voltage (in this design, 1 V)

The minimum output capacitance calculated from [Equation 7](#) is 40 μ F. The stability is ensured when the amount of the output capacitance is 40 μ F or greater. And when all MLCCs (multi-layer ceramic capacitors) are used, both DC- and AC-derating effects must be considered to make sure that the minimum output capacitance requirement is met with sufficient margin.

8.2.3.4.2 Response to a Load Transient

The output capacitance must supply the load with the required current when current is not immediately provided by the regulator. When the output capacitor supplies load current, the impedance of the capacitor greatly affects the magnitude of voltage deviation (such as undershoot and overshoot) during the transient.

Use [Equation 8](#) and [Equation 9](#) to estimate the amount of capacitance needed for a given dynamic load step and release.

Note

There are other factors that can impact the amount of output capacitance for a specific design, such as ripple and stability.

$$C_{OUT(min_under)} = \frac{L_{OUT} \times (\Delta I_{LOAD(max)})^2 \times \left(\frac{V_{OUT} \times t_{SW}}{V_{IN(min)}} + t_{OFF(min)} \right)}{2 \times \Delta V_{LOAD(insert)} \times \left(\left(\frac{V_{IN(min)} - V_{OUT}}{V_{IN(min)}} \right) \times t_{SW} - t_{OFF(min)} \right) \times V_{OUT}} \quad (8)$$

$$C_{OUT(min_over)} = \frac{L_{OUT} \times (\Delta I_{LOAD(max)})^2}{2 \times \Delta V_{LOAD(release)} \times V_{OUT}} \quad (9)$$

where

- $C_{OUT(min_under)}$ is the minimum output capacitance to meet the undershoot requirement
- $C_{OUT(min_over)}$ is the minimum output capacitance to meet the overshoot requirement
- L is the output inductance value (0.33 μ H)
- $\Delta I_{LOAD(max)}$ is the maximum transient step (15 A)
- V_{OUT} is the output voltage value (1 V)
- t_{SW} is the switching period (1.54 μ s)
- $V_{IN(min)}$ is the minimum input voltage for the design (10.8 V)
- $t_{OFF(min)}$ is the minimum off time of the device (300 ns)
- $\Delta V_{LOAD(insert)}$ is the undershoot requirement (30 mV)
- $\Delta V_{LOAD(release)}$ is the overshoot requirement (30 mV)

Most of the above parameters can be found in [Table 8-1](#).

The minimum output capacitance to meet the undershoot requirement is 516 μ F. The minimum output capacitance to meet the overshoot requirement is 1238 μ F. This example uses a combination of POSCAP and MLCC capacitors to meet the overshoot requirement.

- POSCAP bank 1: 2 x 470 μ F, 2.5 V, 6 m Ω per capacitor
- MLCC bank 2: 7 x 100 μ F, 2.5 V, 1 m Ω per capacitor with DC+AC derating factor of 60%

Recalculating the worst case overshoot using the described capacitor bank design, the overshoot is 29.0 mV which meets the 30-mV overshoot specification requirement.

8.2.3.4.3 Output Voltage Ripple

The output voltage ripple is another important design consideration. [Equation 10](#) calculates the minimum output capacitance required to meet the output voltage ripple specification. This criterion is the requirement when the impedance of the output capacitance is dominated by ESR.

$$C_{OUT(min)RIPPLE} = \frac{I_{RIPPLE}}{8 \times f_{SW} \times V_{OUT(ripple)}} = 82 \mu F \quad (10)$$

In this case, the maximum output voltage ripple is 10 mV. For this requirement, the minimum capacitance for ripple requirement yields 82 μ F. Because this capacitance value is significantly lower compared to that of transient requirement, determine the capacitance bank from steps in the previous section [Section 8.2.3.4.2](#). Because the output capacitor bank consists of both POSCAP and MLCC type capacitors, it is important to consider the ripple effect at the switching frequency due to effective ESR. Use [Equation 11](#) to determine the maximum ESR of the output capacitor bank for the switching frequency.

$$ESR_{MAX} = \frac{V_{OUT(ripple)} - \frac{I_{RIPPLE}}{8 \times f_{SW} \times C_{OUT}}}{I_{RIPPLE}} = 2.2 m\Omega \quad (11)$$

Estimate the effective ESR at the switching frequency by obtaining the impedance vs frequency characteristics of the output capacitors. The parallel impedance of capacitor bank 1 and capacitor bank 2 at the switching frequency of the design example is estimated to be 1.2 m Ω , which is less than that of the maximum ESR value. Therefore, the output voltage ripple requirement (10 mV) can be met. For detailed calculation on the effective ESR please contact the factory to obtain a user-friendly Excel based design tool.

8.2.3.5 Input Capacitor Selection

The TPS549B22 devices require a high-quality, ceramic, type X5R or X7R, input decoupling capacitor with a value of at least 1 μF of effective capacitance on the VDD pin, relative to AGND. The power stage input decoupling capacitance (effective capacitance at the PVIN and PGND pins) must be sufficient to supply the high switching currents demanded when the high-side MOSFET switches on, while providing minimal input voltage ripple as a result. This effective capacitance includes any DC bias effects. The voltage rating of the input capacitor must be greater than the maximum input voltage. The capacitor must also have a ripple current rating greater than the maximum input current ripple to the device during full load. The input ripple current can be calculated using Equation 12.

$$I_{\text{CIN(rms)}} = I_{\text{OUT(max)}} \times \sqrt{\frac{V_{\text{OUT}}}{V_{\text{IN(min)}}} \times \frac{(V_{\text{IN(min)}} - V_{\text{OUT}})}{V_{\text{IN(min)}}}} = 10 \text{ Arms} \quad (12)$$

The minimum input capacitance and ESR values for a given input voltage ripple specification, $V_{\text{IN(ripple)}}$, are shown in Equation 13 and Equation 14. The input ripple is composed of a capacitive portion, $V_{\text{RIPPLE(cap)}}$, and a resistive portion, $V_{\text{RIPPLE(esr)}}$.

$$C_{\text{IN(min)}} = \frac{I_{\text{OUT(max)}} \times V_{\text{OUT}}}{V_{\text{RIPPLE(cap)}} \times V_{\text{IN(max)}} \times f_{\text{SW}}} = 21.4 \mu\text{F} \quad (13)$$

$$\text{ESR}_{\text{CIN(max)}} = \frac{V_{\text{RIPPLE(ESR)}}}{I_{\text{OUT(max)}} + \left(\frac{I_{\text{RIPPLE}}}{2}\right)} = 3.4 \text{ m}\Omega \quad (14)$$

The value of a ceramic capacitor varies significantly over temperature and the amount of DC bias applied to the capacitor. The capacitance variations due to temperature can be minimized by selecting a dielectric material that is stable over temperature. X5R and X7R ceramic dielectrics are usually selected for power regulator capacitors because they have a high capacitance to volume ratio and are fairly stable over temperature. The input capacitor must also be selected with the DC bias taken into account. For this example design, a ceramic capacitor with at least a 25-V voltage rating is required to support the maximum input voltage. For this design, allow 0.1-V input ripple for $V_{\text{RIPPLE(cap)}}$, and 0.1-V input ripple for $V_{\text{RIPPLE(esr)}}$. Using Equation 13 and Equation 14, the minimum input capacitance for this design is 21.4 μF , and the maximum ESR is 3.4 $\text{m}\Omega$. For this example, four 22- μF , 25-V ceramic capacitors and one additional 100- μF , 25-V low-ESR polymer capacitors in parallel were selected for the power stage.

8.2.3.6 Bootstrap Capacitor Selection

A ceramic capacitor with a value of 0.1 μF must be connected between the BOOT and SW pins for proper operation. TI recommends using a ceramic capacitor with X5R or better grade dielectric. Use a capacitor with a voltage rating of 25 V or higher.

8.2.3.7 BP Pin

Bypass the BP pin to DRGND with 4.7 μF of capacitance. In order for the regulator to function properly, it is important that these capacitors be localized to the TPS549B22, with low-impedance return paths. See Section 8.4.1 for more information.

8.2.3.8 R-C Snubber and VIN Pin High-Frequency Bypass

Though operating the TPS549B22 within absolute maximum ratings without ringing reduction techniques is possible, some designs can require external components to further reduce ringing levels. This example uses two approaches: a high frequency power stage bypass capacitor on the VIN pins, and an R-C snubber between the SW area and GND.

The high-frequency VIN bypass capacitor is a lossless ringing reduction technique which helps minimize the outboard parasitic inductances in the power stage, which store energy during the low-side MOSFET on-time, and discharge after the high-side MOSFET is turned on. For this example two 2.2-nF, 25-V, 0603-sized high-frequency capacitors are used. The placement of these capacitors is critical to the effectiveness. The excellent placement is shown in [Figure 8-1](#).

Additionally, an R-C snubber circuit is added to this example. To balance efficiency and spike levels, a 1-nF capacitor and a 1-Ω resistor are chosen. In this example a 0805-sized resistor is chosen, which is rated for 0.125 W, nearly twice the estimated power dissipation. See [Snubber Circuits: Theory, Design and Application](#) for more information about snubber circuits.

8.2.3.9 Optimize Reference Voltage (VSEL)

Optimize the reference voltage by choosing a value for R_{VSEL} . The TPS549B22 device is designed with a wide range of precision reference voltage support from 0.6 V to 1.2 V with an available step change of 50 mV. Program these reference voltages using the VSEL pin-strap configurations. See [Table 6-2](#) for internal reference voltage selections. In addition to providing initial boot voltage value, use the VSEL pin to program hiccup and latch-off mode.

There are two ways to program the output voltage set point. If the output voltage set point is one of the 16 available reference and boot voltage options, no feedback resistors are required for output voltage programming. In the case where feedback resistors are not needed, connect the RSP pin to the positive sensing point of the load. Always connect the RSN pin to the load return sensing point.

In this design example, because the output voltage set point is 1 V, select $R_{VSEL(LS)}$ of either 75 kΩ (latch off) or 68.1 kΩ (hiccup) as shown in [Table 6-3](#). If the output voltage set point is NOT one of the 16 available reference or boot voltage options, feedback resistors are required for output voltage programming. Connect the RSP pin to the mid-point of the resistor divider. Always connect the RSN pin to the load return sensing point as shown in [Figure 23](#) and [Figure 24](#).

The general guideline to select boot and internal reference voltage is to select the reference voltage closest to the output voltage set point. In addition, because the RSP and RSN pins are extremely high-impedance input terminals of the true differential remote sense amplifier, use a feedback resistor divider with values much less than 100 kΩ.

8.2.3.10 MODE Pin Selection

MODE pin strap configuration is used to program control topology and internal soft-start timing selections. TPS549B22 supports both D-CAP3 and DCAP control modes. For general POL applications, TI strongly recommends configuring the D-CAP3 control mode due to the simple to use and no external compensation features. In the rare instance where DCAP control scheme is needed, an RCC network across the output inductor is needed to generate sufficient ripple voltage on the RSP pin. In this design example, $R_{MODE(LS)}$ of 42.2 kΩ is selected for D-CAP3 control mode and soft start time of 1 ms.

8.2.3.11 ADDR Pin Selection

ADDR pin strap configuration is used to program device address and light load conduction mode selection. The TPS549B22 allows up to 16 different chip addresses for PMBus communication with the first 3 bits fixed as 001. The address selection process is defined by resistor divider ratio from BP pin to ADDR pin, and the address detection circuit will start to work only after the initial power up when V_{DD} has risen above the UVLO threshold.

For this application example, a device address of 16d is desired. We select the low side RADDR to be 0 Ω considering the SKIP operation and device address of 16d. [Table 4](#) lists all combinations of the address selections. The 1% or better tolerance resistors with typical temperature coefficient of ±100 ppm/°C are recommended.

8.2.3.12 Overcurrent Limit Design

The TPS549B22 device uses the ILIM pin to set the OCP level. Connect the ILIM pin to GND through the voltage setting resistor, R_{ILIM} . To provide both good accuracy and cost effective solution, this device supports

temperature compensated MOSFET on-resistance ($R_{DS(on)}$) sensing. Also, this device performs both positive and negative inductor current limiting with the same magnitudes. Positive current limit is normally used to protect the inductor from saturation therefore causing damage to the high-side and low-side FETs. Negative current limit is used to protect the low-side FET during OVP discharge.

The inductor current is monitored by the voltage between PGND pin and SW pin during the OFF time. The ILIM pin has 1200 ppm/°C temperature slope to compensate the temperature dependency of the on-resistance. The PGND pin is used as the positive current sensing node.

TPS549B22 has cycle-by-cycle over-current limiting control. The inductor current is monitored during the OFF state and the controller maintains the OFF state during the period that the inductor current is larger than the overcurrent ILIM level. The voltage on the ILIM pin (V_{ILIM}) sets the valley level of the inductor current. The range of value of the R_{ILIM} resistor is between 9.53 kΩ and 105 kΩ. The range of valley OCL is between 5 A and 50 A (typical). If the R_{ILIM} resistance is outside of the recommended range, OCL accuracy and function cannot be ensured. (see [Table 8-3](#))

Table 8-3. Closed Loop EVM Measurement of OCP Settings

| 1% R_{ILIM} (kΩ) | OVERCURRENT PROTECTION VALLEY (A) |
|-----------------------|-----------------------------------|
| 82.1 | 40 |
| 71.5 | 35 |
| 61.9 | 30 |
| 51.1 | 25 |
| 40.2 | 20 |
| 30.1 | 15 |
| 20.5 | 10 |

Use [Equation 15](#) to relate the valley OCL to the R_{ILIM} resistance.

$$R_{ILIM} = 2.0664 \times OCL_{VALLEY} - 0.6036 \quad (15)$$

where

- R_{ILIM} is in kΩ
- OCL_{VALLEY} is in A

In this design example, the desired valley OCL is 43 A, the calculated R_{ILIM} is 61.9 kΩ. Use [Equation 16](#) to calculate the DC OCL to be 32.1 A.

$$OCL_{DC} = OCL_{VALLEY} + 0.5 \times I_{RIPPLE} \quad (16)$$

where

- R_{ILIM} is in kΩ
- OCL_{DC} is in A

In an overcurrent condition, the current to the load exceeds the inductor current and the output voltage falls. When the output voltage crosses the under-voltage fault threshold for at least 1 ms, the behavior of the device depends on the VSEL pin strap setting. If hiccup mode is selected, the device restarts after a 16-ms delay (1-ms soft-start option). If the overcurrent condition persists, the OC hiccup behavior repeats. During latch-off mode operation the device shuts down until the EN pin is toggled or VDD pin is power cycled.

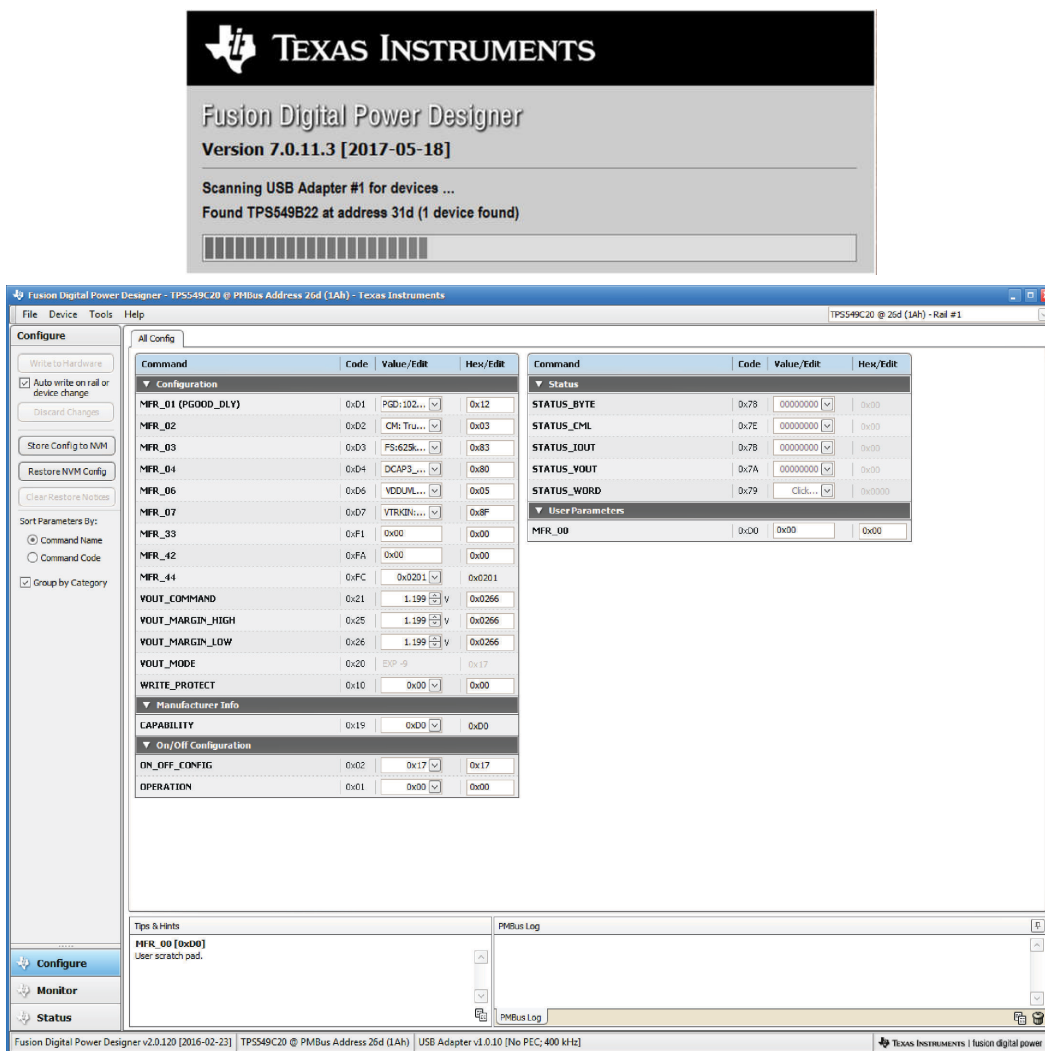


Figure 8-2. VOUT Command Graphic User Interface

8.2.4 Application Curves

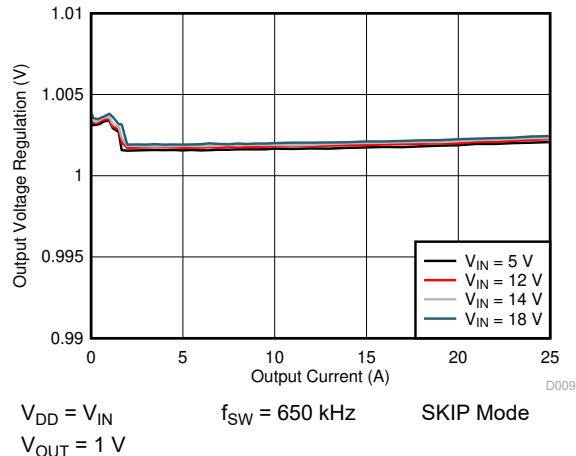


Figure 8-3. Output Voltage Regulation vs. Output Current



Figure 8-4. Transient Response Peak-to-Peak

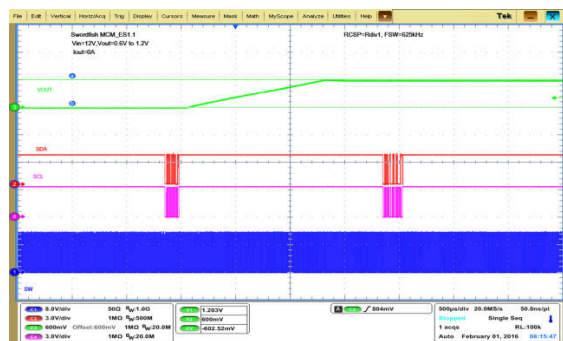


Figure 8-5. VOUT Command

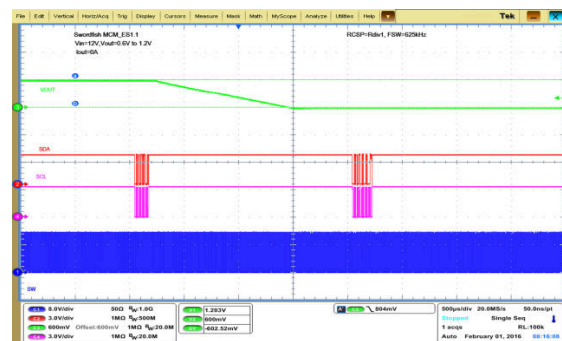


Figure 8-6. VOUT Command

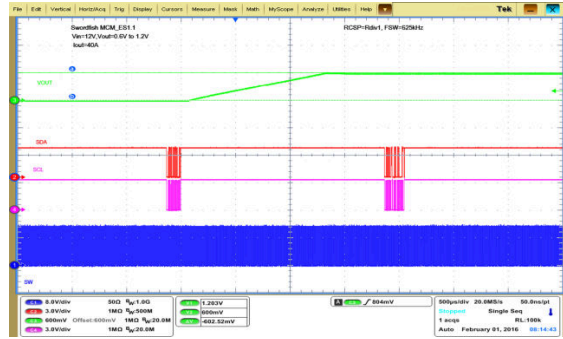


Figure 8-7. VOUT Command

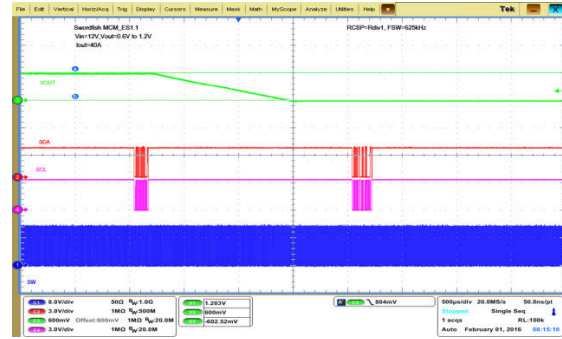


Figure 8-8. VOUT Command

8.3 Power Supply Recommendations

This device is designed to operate from an input voltage supply between 1.5 V and 18 V. Ensure the supply is well regulated. Proper bypassing of input supplies and internal regulators is also critical for noise performance, as is the quality of the PCB layout and grounding scheme. See the recommendations in the [Section 8.4](#) section.

8.4 Layout

8.4.1 Layout Guidelines

Consider these layout guidelines before starting a layout work using TPS549B22.

- Making sure that all GND pins, including AGND (pin 30), DRGND (pin 29), and PGND (pins 13, 14, 15, 16, 17, 18, 19, and 20) are connected directly to the thermal pad underneath the device via traces or plane is absolutely critical.
- Include as many thermal vias as possible to support a 25-A thermal operation. For example, a total of 35 thermal vias are used (outer diameter of 20 mil) in the TPS49B22EVM-847, which is available for purchase at www.ti.com.
- Place the power components (including input/output capacitors, output inductor and TPS549B22 device) on one side of the PCB (solder side). Insert at least two inner layers (or planes) connected to the power ground, to shield and isolate the small signal traces from noisy power lines.
- Place the VIN pin decoupling capacitors as close as possible to the PVIN and PGND pins to minimize the input AC current loop. Place a high-frequency decoupling capacitor (with a value between 1 nF and 0.1 μ F) as close to the PVIN pin and PGND pin as the spacing rule allows. This placement helps suppress the switch node ringing.
- Place VDD and BP decoupling capacitors as close as possible to the device pins. Do not use PVIN plane connection for the VDD pin. Separate the VDD signal from the PVIN signal by using separate trace connections. Provide GND vias for each decoupling capacitor and make the loop as small as possible.
- Make sure that the PCB trace defined as switch node (which connects the SW pins and up-stream of the output inductor) are as short and wide as possible. In the TPS49B22EVM-847 design, the SW trace width is 200 mil. Use a separate via or trace to connect SW node to snubber and bootstrap capacitor. Do not combine these connections.
- Place all sensitive analog traces and components (including VOSNS, RSP, RSN, ILIM, MODE, VSEL and ADDR) far away from any high voltage switch node (itself and others), such as SW and BOOT to avoid noise coupling. In addition, place MODE, VSEL and ADDR programming resistors near the device pins.
- The RSP and RSN pins operate as inputs to a differential remote sense amplifier that operates with very high impedance. It is essential to route the RSP and RSN pins as a pair of diff-traces in Kelvin-sense fashion. Route them directly to either the load sense points (+ and –) or the output bulk capacitors. The internal circuit uses the VOSNS pin for on-time adjustment. It is critical to tie the VOSNS pin directly tied to VOUT (load sense point) for accurate output voltage result.
- Pins 6, 7, and 26 are not connected in the 25-A TPS549B22 device, while pins 6, and 7 connect to SW and pins 26 connects to PVIN in the 40-A TPS549D22 device.

8.4.2 Layout Examples

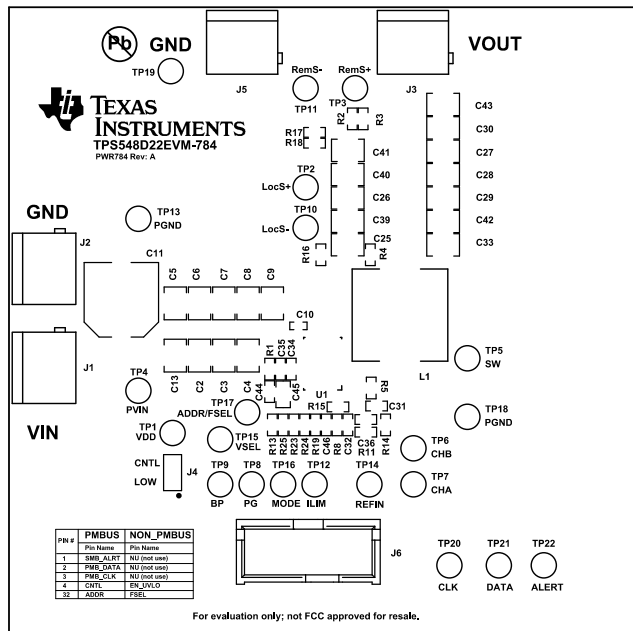


Figure 8-9. EVM Top View

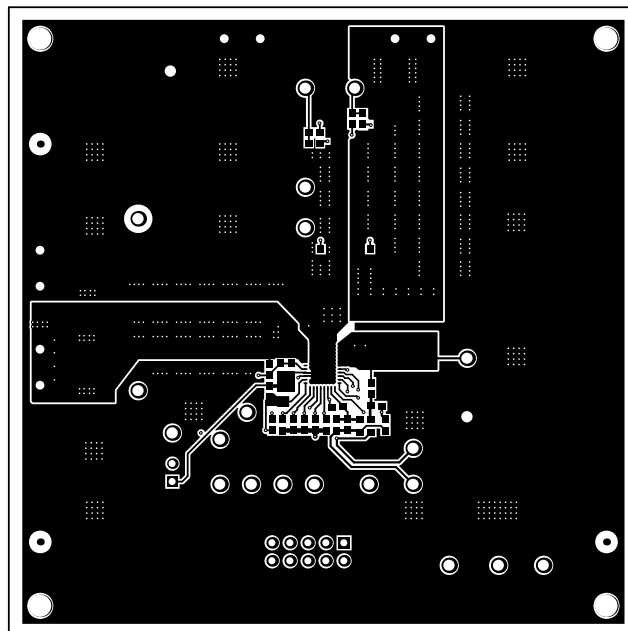


Figure 8-10. EVM Top Layer

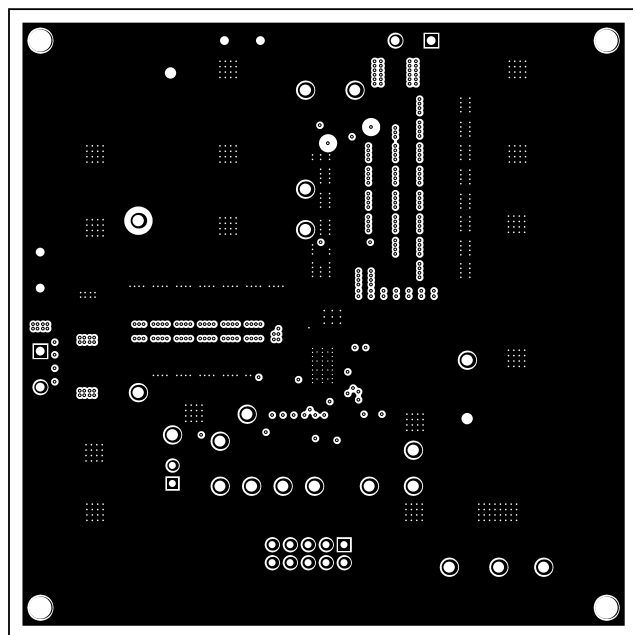


Figure 8-11. EVM Inner Layer 1

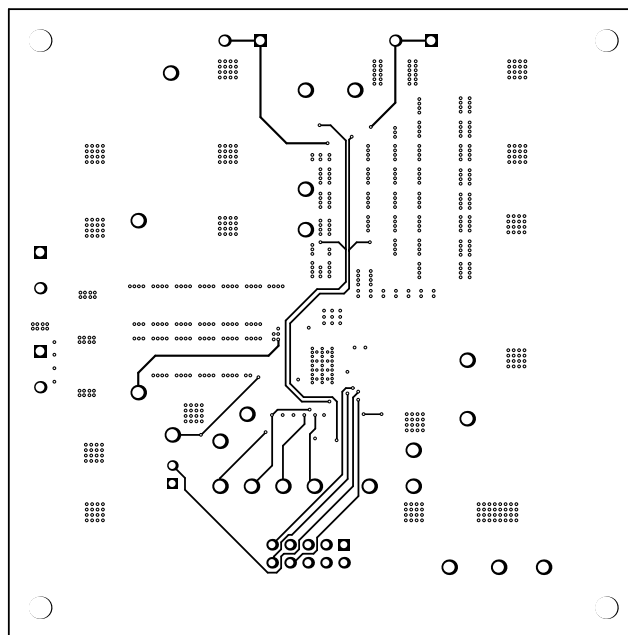


Figure 8-12. EVM Inner Layer 2

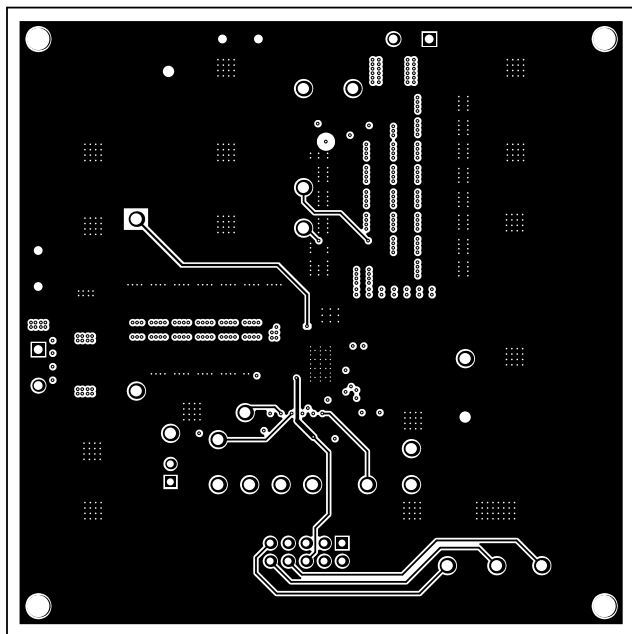


Figure 8-13. EVM Inner Layer 3

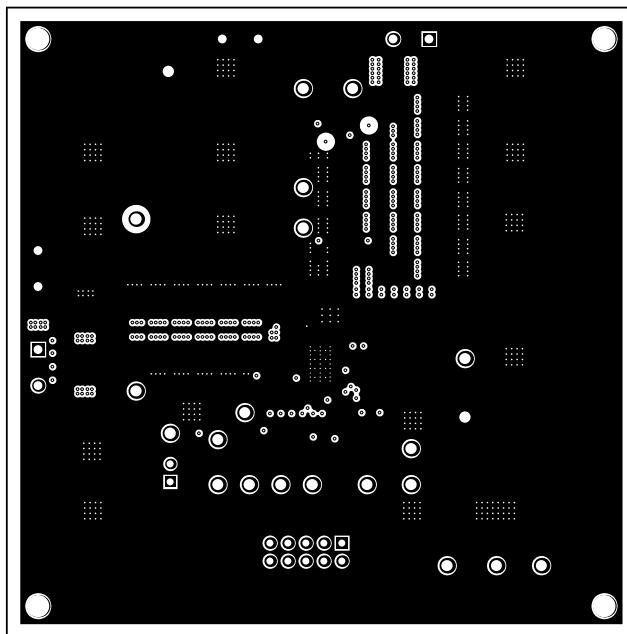


Figure 8-14. EVM Inner Layer 4

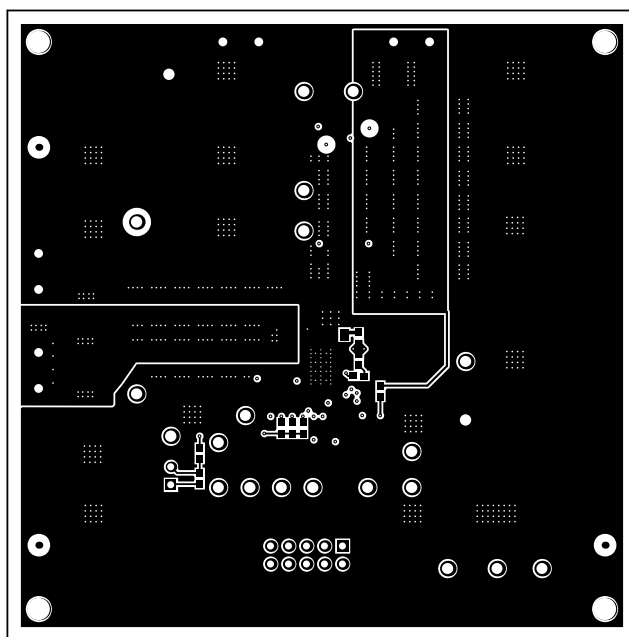


Figure 8-15. EVM Bottom Layer

8.4.3 Mounting and Thermal Profile Recommendation

Proper mounting technique adequately covers the exposed thermal tab with solder. Excessive heat during the reflow process can affect electrical performance. [Figure 8-16](#) shows the recommended reflow oven thermal profile. Proper post-assembly cleaning is also critical to device performance. See

[QFN/SON PCB Attachment](#) for more information.

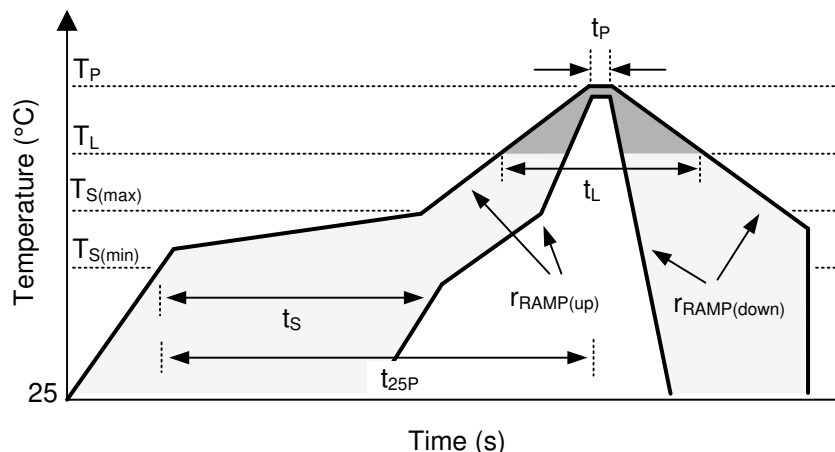


Figure 8-16. Recommended Reflow Oven Thermal Profile

Table 8-4. Recommended Thermal Profile Parameters

| PARAMETER | | MIN | TYP | MAX | UNIT |
|------------------------------|--|-----|-----|-----|------|
| RAMP UP AND RAMP DOWN | | | | | |
| $r_{\text{RAMP(up)}}$ | Average ramp-up rate, $T_{\text{S(max)}}$ to T_{P} | | | 3 | °C/s |
| $r_{\text{RAMP(down)}}$ | Average ramp-down rate, T_{P} to $T_{\text{S(max)}}$ | | | 6 | °C/s |
| PRE-HEAT | | | | | |
| T_{S} | Pre-heat temperature | 150 | | 200 | °C |
| t_{S} | Pre-heat time, $T_{\text{S(min)}}$ to $T_{\text{S(max)}}$ | 60 | | 180 | s |
| REFLOW | | | | | |
| T_{L} | Liquids temperature | | 217 | | °C |
| T_{P} | Peak temperature | | | 260 | °C |
| t_{L} | Time maintained above liquidus temperature, T_{L} | 60 | | 150 | s |
| t_{P} | Time maintained within 5°C of peak temperature, T_{P} | 20 | | 40 | s |
| $t_{25\text{P}}$ | Total time from 25°C to peak temperature, T_{P} | | | 480 | s |

9 Device and Documentation Support

9.1 Device Support

9.1.1 Development Support

9.1.1.1 Custom Design With WEBENCH® Tools

[Click here](#) to create a custom design using the TPS549B22 device with the WEBENCH® Power Designer.

1. Start by entering the input voltage (V_{IN}), output voltage (V_{OUT}), and output current (I_{OUT}) requirements.
2. Optimize the design for key parameters such as efficiency, footprint, and cost using the optimizer dial.
3. Compare the generated design with other possible solutions from Texas Instruments.

The WEBENCH Power Designer provides a customized schematic along with a list of materials with real-time pricing and component availability.

In most cases, these actions are available:

- Run electrical simulations to see important waveforms and circuit performance
- Run thermal simulations to understand board thermal performance
- Export customized schematic and layout into popular CAD formats
- Print PDF reports for the design, and share the design with colleagues

Get more information about WEBENCH tools at www.ti.com/WEBENCH.

9.2 Documentation Support

9.2.1 Related Documentation

For related documentation see the following:

Texas Instruments, [Snubber Circuits: Theory, Design and Application](#) seminar

9.3 Receiving Notification of Documentation Updates

To receive notification of documentation updates, navigate to the device product folder on ti.com. Click on *Notifications* to register and receive a weekly digest of any product information that has changed. For change details, review the revision history included in any revised document.

9.4 Support Resources

[TI E2E™ support forums](#) are an engineer's go-to source for fast, verified answers and design help — straight from the experts. Search existing answers or ask your own question to get the quick design help you need.

Linked content is provided "AS IS" by the respective contributors. They do not constitute TI specifications and do not necessarily reflect TI's views; see TI's [Terms of Use](#).

9.5 Trademarks

SWIFT™, D-CAP3™, NexFET™, and TI E2E™ are trademarks of Texas Instruments.

PMBus® is a registered trademark of SMIF, Inc..

WEBENCH® is a registered trademark of Texas Instruments.

All trademarks are the property of their respective owners.

9.6 Electrostatic Discharge Caution



This integrated circuit can be damaged by ESD. Texas Instruments recommends that all integrated circuits be handled with appropriate precautions. Failure to observe proper handling and installation procedures can cause damage.

ESD damage can range from subtle performance degradation to complete device failure. Precision integrated circuits may be more susceptible to damage because very small parametric changes could cause the device not to meet its published specifications.

9.7 Glossary

[TI Glossary](#)

This glossary lists and explains terms, acronyms, and definitions.

10 Revision History

NOTE: Page numbers for previous revisions may differ from page numbers in the current version.

| Changes from Revision * (June 2017) to Revision A (February 2024) | Page |
|---|------|
| • Updated the numbering format for tables, figures, and cross-references throughout the document..... | 1 |
| • Changed all instances of legacy terminology to controller and target..... | 1 |
| • Updated trademark information..... | 1 |
| • Updated parameters in the <i>Electrical Characteristics</i> table..... | 6 |

11 Mechanical, Packaging, and Orderable Information

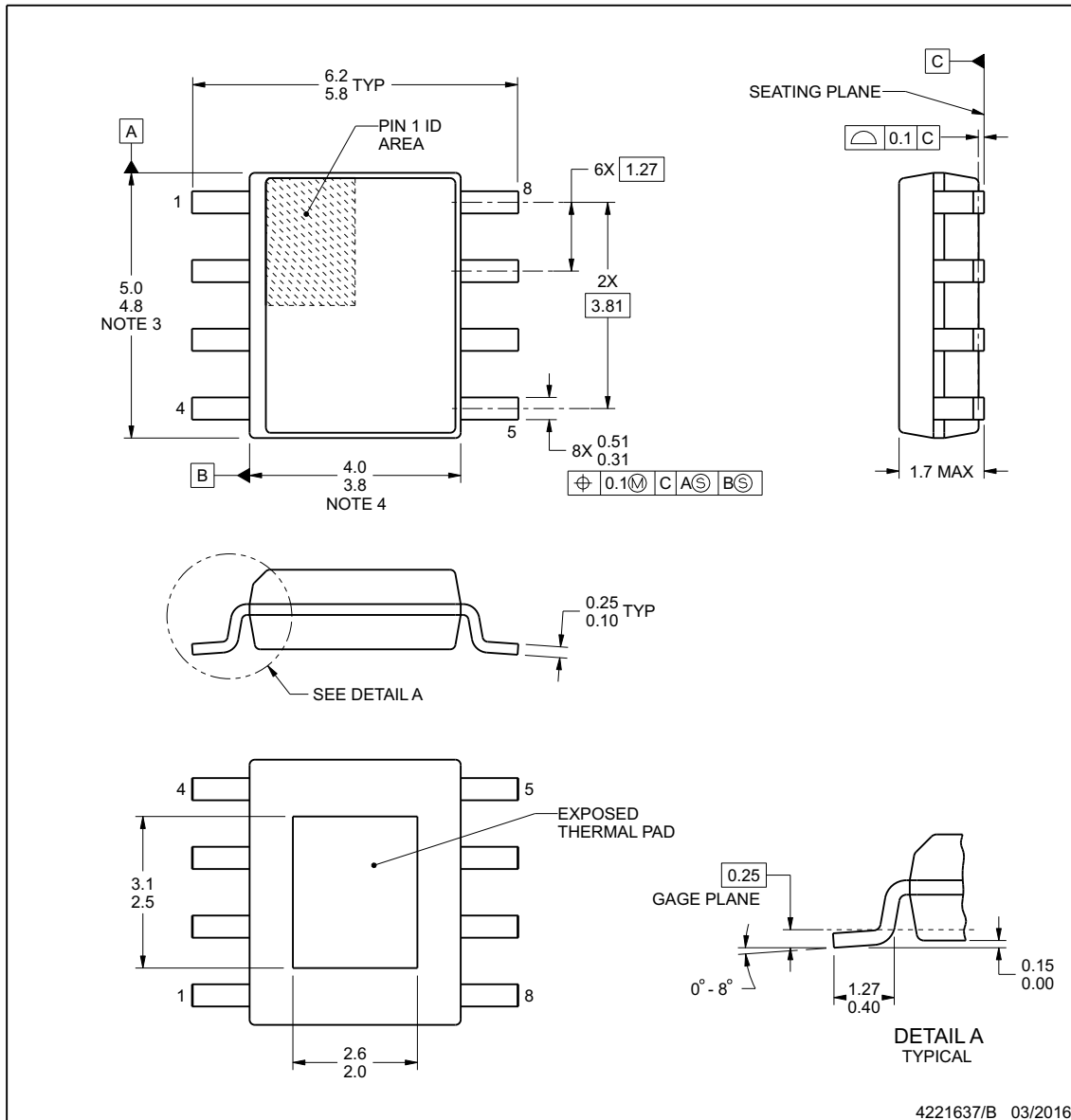
The following pages include mechanical, packaging, and orderable information. This information is the most current data available for the designated devices. This data is subject to change without notice and revision of this document. For browser-based versions of this data sheet, refer to the left-hand navigation.



DDA0008J

PowerPAD™ SOIC - 1.7 mm max height

PLASTIC SMALL OUTLINE



NOTES:

1. All linear dimensions are in millimeters. Any dimensions in parenthesis are for reference only. Dimensioning and tolerancing per ASME Y14.5M.
2. This drawing is subject to change without notice.
3. This dimension does not include mold flash, protrusions, or gate burrs. Mold flash, protrusions, or gate burrs shall not exceed 0.15 mm per side.
4. This dimension does not include interlead flash. Interlead flash shall not exceed 0.25 mm per side.
5. Reference JEDEC registration MS-012, variation BA.

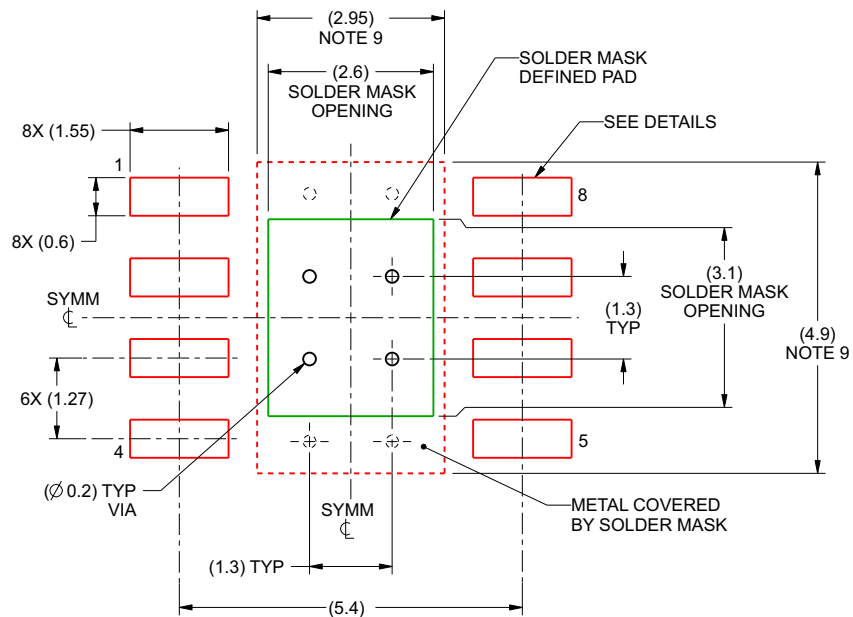
www.ti.com

EXAMPLE BOARD LAYOUT

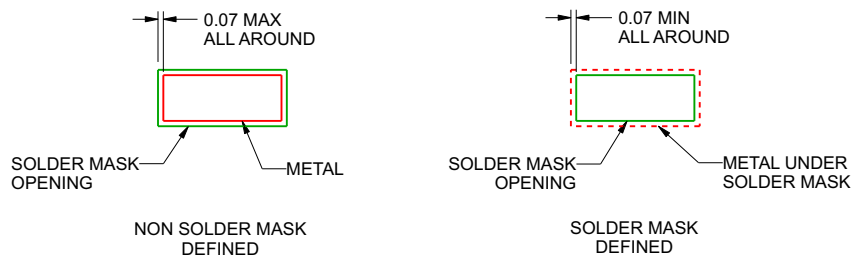
DDA0008J

PowerPAD™ SOIC - 1.7 mm max height

PLASTIC SMALL OUTLINE



LAND PATTERN EXAMPLE
SCALE:10X



SOLDER MASK DETAILS

4221637/B 03/2016

NOTES: (continued)

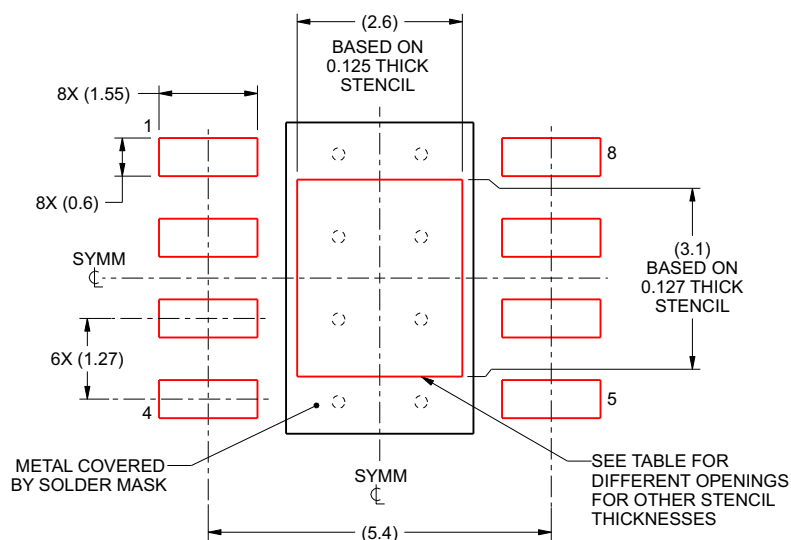
6. Publication IPC-7351 may have alternate designs.
7. Solder mask tolerances between and around signal pads can vary based on board fabrication site.
8. This package is designed to be soldered to a thermal pad on the board. For more information, see Texas Instruments literature numbers SLMA002 (www.ti.com/lit/slma002) and SLMA004 (www.ti.com/lit/slma004).
9. Size of metal pad may vary due to creepage requirement.

EXAMPLE STENCIL DESIGN

DDA0008J

PowerPAD™ SOIC - 1.7 mm max height

PLASTIC SMALL OUTLINE



SOLDER PASTE EXAMPLE
EXPOSED PAD
100% PRINTED SOLDER COVERAGE BY AREA
SCALE:10X

| STENCIL THICKNESS | SOLDER STENCIL OPENING |
|-------------------|------------------------|
| 0.1 | 2.91 X 3.47 |
| 0.125 | 2.6 X 3.1 (SHOWN) |
| 0.150 | 2.37 X 2.83 |
| 0.175 | 2.20 X 2.62 |

4221637/B 03/2016

NOTES: (continued)

10. Laser cutting apertures with trapezoidal walls and rounded corners may offer better paste release. IPC-7525 may have alternate design recommendations.
11. Board assembly site may have different recommendations for stencil design.

www.ti.com

PACKAGING INFORMATION

| Orderable part number | Status (1) | Material type (2) | Package Pins | Package qty Carrier | RoHS (3) | Lead finish/ Ball material (4) | MSL rating/ Peak reflow (5) | Op temp (°C) | Part marking (6) |
|-------------------------------|---------------|----------------------|----------------------|-----------------------|-------------|--------------------------------------|-----------------------------------|--------------|---------------------|
| TPS549B22RVFR | Active | Production | LQFN-CLIP (RVF) 40 | 2500 LARGE T&R | ROHS Exempt | NIPDAU SN | Level-2-260C-1 YEAR | -40 to 125 | (549B22, 549B22A1) |
| TPS549B22RVFR.A | Active | Production | LQFN-CLIP (RVF) 40 | 2500 LARGE T&R | ROHS Exempt | NIPDAU | Level-2-260C-1 YEAR | -40 to 125 | (549B22, 549B22A1) |
| TPS549B22RVFR.B | Active | Production | LQFN-CLIP (RVF) 40 | 2500 LARGE T&R | - | Call TI | Call TI | -40 to 125 | |
| TPS549B22RVFT | Active | Production | LQFN-CLIP (RVF) 40 | 250 SMALL T&R | ROHS Exempt | NIPDAU SN | Level-2-260C-1 YEAR | -40 to 125 | (549B22, 549B22A1) |
| TPS549B22RVFT.A | Active | Production | LQFN-CLIP (RVF) 40 | 250 SMALL T&R | ROHS Exempt | NIPDAU | Level-2-260C-1 YEAR | -40 to 125 | (549B22, 549B22A1) |
| TPS549B22RVFT.B | Active | Production | LQFN-CLIP (RVF) 40 | 250 SMALL T&R | - | Call TI | Call TI | -40 to 125 | |
| TPS549B22RVFTG4 | Active | Production | LQFN-CLIP (RVF) 40 | 250 SMALL T&R | ROHS Exempt | NIPDAU | Level-2-260C-1 YEAR | -40 to 125 | 549B22 |
| TPS549B22RVFTG4.A | Active | Production | LQFN-CLIP (RVF) 40 | 250 SMALL T&R | ROHS Exempt | NIPDAU | Level-2-260C-1 YEAR | -40 to 125 | 549B22 |
| TPS549B22RVFTG4.B | Active | Production | LQFN-CLIP (RVF) 40 | 250 SMALL T&R | - | Call TI | Call TI | -40 to 125 | |

⁽¹⁾ **Status:** For more details on status, see our [product life cycle](#).

⁽²⁾ **Material type:** When designated, preproduction parts are prototypes/experimental devices, and are not yet approved or released for full production. Testing and final process, including without limitation quality assurance, reliability performance testing, and/or process qualification, may not yet be complete, and this item is subject to further changes or possible discontinuation. If available for ordering, purchases will be subject to an additional waiver at checkout, and are intended for early internal evaluation purposes only. These items are sold without warranties of any kind.

⁽³⁾ **RoHS values:** Yes, No, RoHS Exempt. See the [TI RoHS Statement](#) for additional information and value definition.

⁽⁴⁾ **Lead finish/Ball material:** Parts may have multiple material finish options. Finish options are separated by a vertical ruled line. Lead finish/Ball material values may wrap to two lines if the finish value exceeds the maximum column width.

⁽⁵⁾ **MSL rating/Peak reflow:** The moisture sensitivity level ratings and peak solder (reflow) temperatures. In the event that a part has multiple moisture sensitivity ratings, only the lowest level per JEDEC standards is shown. Refer to the shipping label for the actual reflow temperature that will be used to mount the part to the printed circuit board.

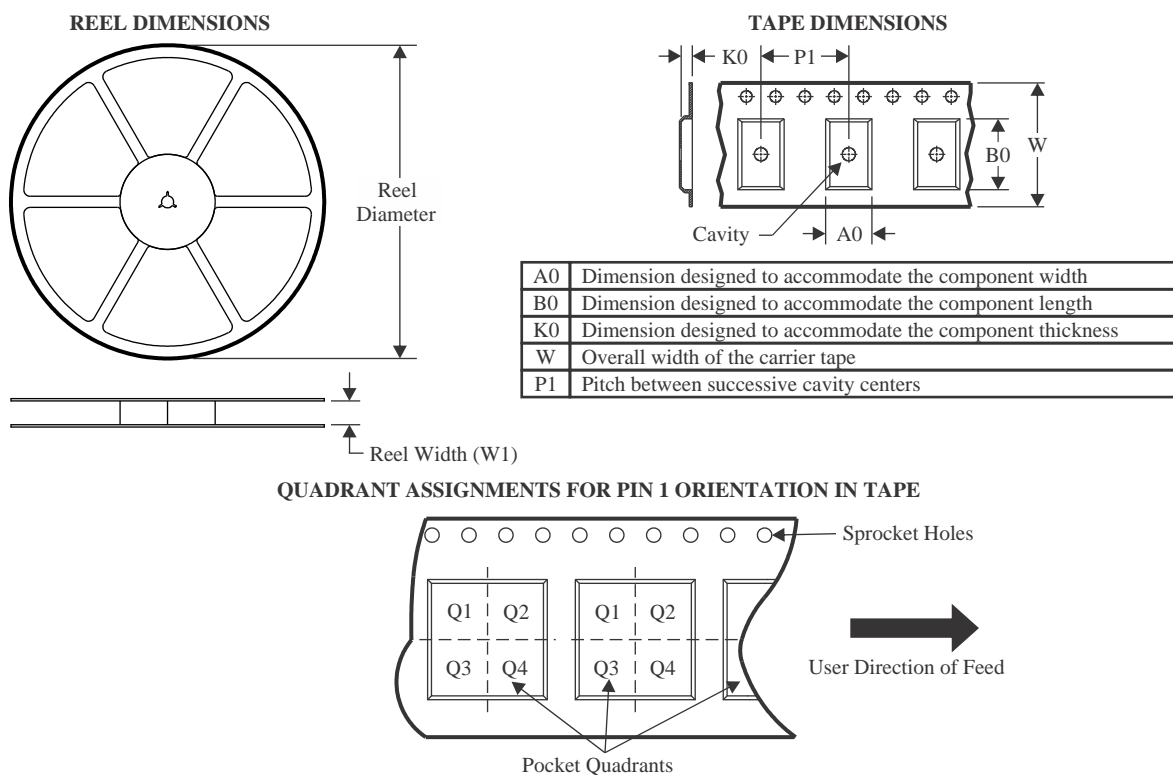
⁽⁶⁾ **Part marking:** There may be an additional marking, which relates to the logo, the lot trace code information, or the environmental category of the part.

Multiple part markings will be inside parentheses. Only one part marking contained in parentheses and separated by a "~" will appear on a part. If a line is indented then it is a continuation of the previous line and the two combined represent the entire part marking for that device.

Important Information and Disclaimer: The information provided on this page represents TI's knowledge and belief as of the date that it is provided. TI bases its knowledge and belief on information provided by third parties, and makes no representation or warranty as to the accuracy of such information. Efforts are underway to better integrate information from third parties. TI has taken and continues to take reasonable steps to provide representative and accurate information but may not have conducted destructive testing or chemical analysis on incoming materials and chemicals. TI and TI suppliers consider certain information to be proprietary, and thus CAS numbers and other limited information may not be available for release.

In no event shall TI's liability arising out of such information exceed the total purchase price of the TI part(s) at issue in this document sold by TI to Customer on an annual basis.

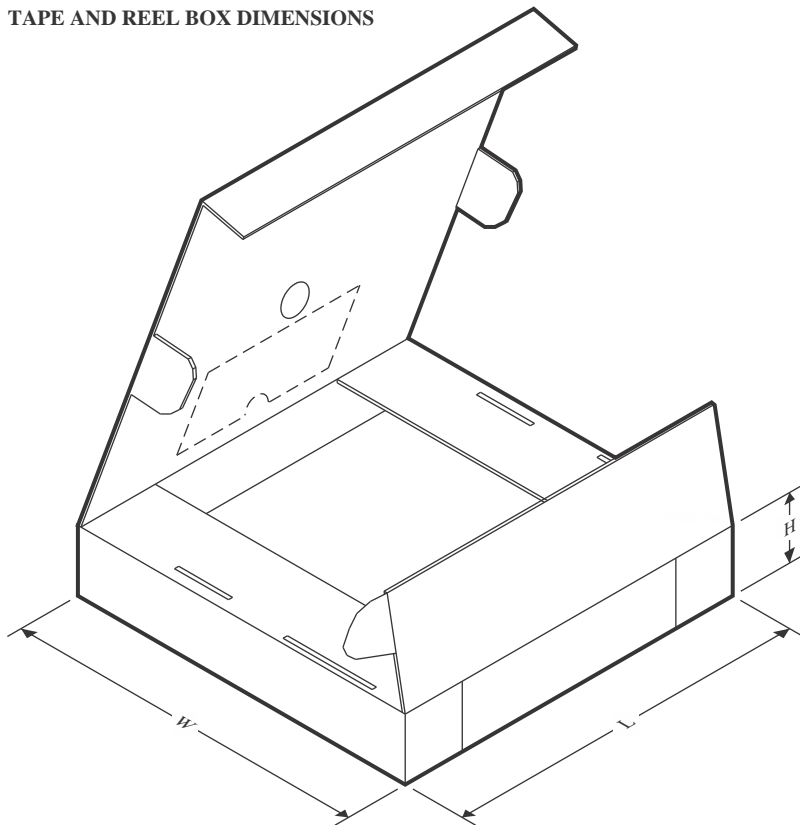
TAPE AND REEL INFORMATION



*All dimensions are nominal

| Device | Package Type | Package Drawing | Pins | SPQ | Reel Diameter (mm) | Reel Width W1 (mm) | A0 (mm) | B0 (mm) | K0 (mm) | P1 (mm) | W (mm) | Pin1 Quadrant |
|-----------------|--------------|-----------------|------|------|--------------------|--------------------|---------|---------|---------|---------|--------|---------------|
| TPS549B22RVFR | LQFN-CLIP | RVF | 40 | 2500 | 330.0 | 16.4 | 5.35 | 7.35 | 1.7 | 8.0 | 16.0 | Q1 |
| TPS549B22RVFT | LQFN-CLIP | RVF | 40 | 250 | 180.0 | 16.4 | 5.35 | 7.35 | 1.7 | 8.0 | 16.0 | Q1 |
| TPS549B22RVFTG4 | LQFN-CLIP | RVF | 40 | 250 | 180.0 | 16.4 | 5.35 | 7.35 | 1.7 | 8.0 | 16.0 | Q1 |

TAPE AND REEL BOX DIMENSIONS



*All dimensions are nominal

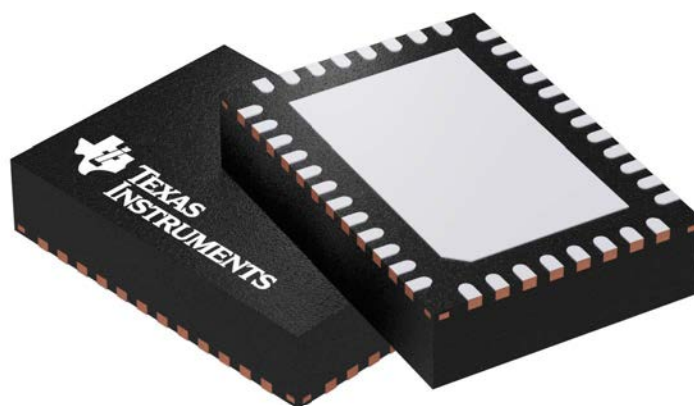
| Device | Package Type | Package Drawing | Pins | SPQ | Length (mm) | Width (mm) | Height (mm) |
|-----------------|--------------|-----------------|------|------|-------------|------------|-------------|
| TPS549B22RVFR | LQFN-CLIP | RVF | 40 | 2500 | 367.0 | 367.0 | 38.0 |
| TPS549B22RVFT | LQFN-CLIP | RVF | 40 | 250 | 210.0 | 185.0 | 35.0 |
| TPS549B22RVFTG4 | LQFN-CLIP | RVF | 40 | 250 | 210.0 | 185.0 | 35.0 |

GENERIC PACKAGE VIEW

RVF 40

LQFN-CLIP - 1.52 mm max height

PLASTIC QUAD FLATPACK - NO LEAD



Images above are just a representation of the package family, actual package may vary.
Refer to the product data sheet for package details.

4211383/D



LQFN-CLIP - 1.52 mm max height

PLASTIC QUAD FLATPACK - NO LEAD

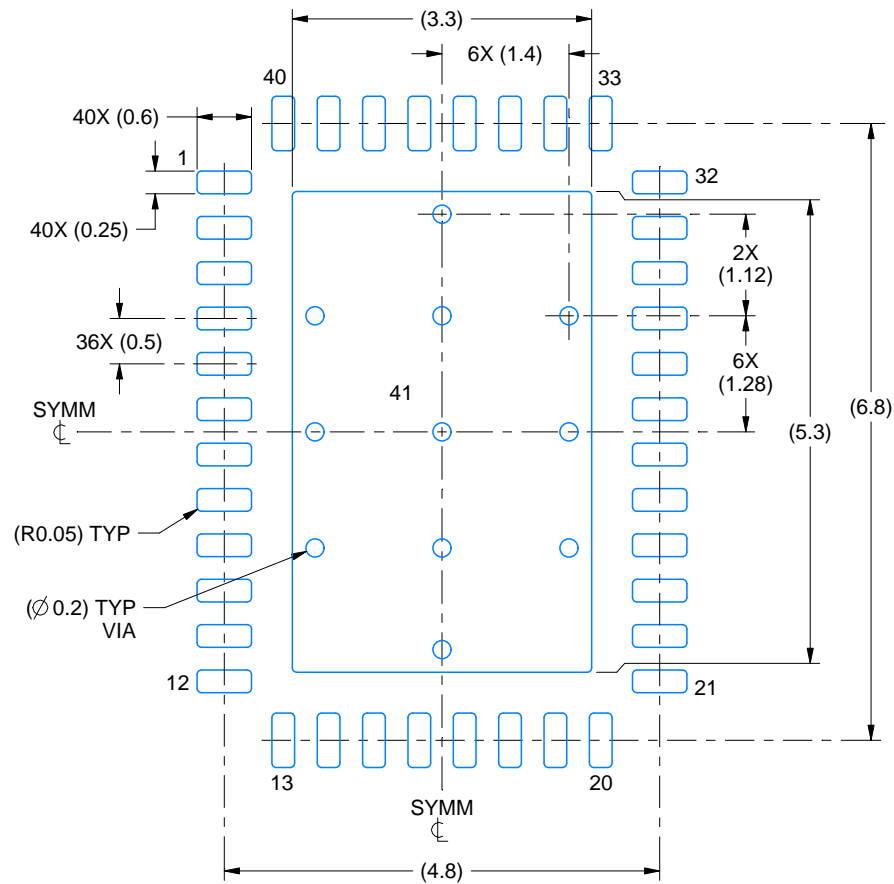


1. All linear dimensions are in millimeters. Any dimensions in parenthesis are for reference only. Dimensioning and tolerancing per ASME Y14.5M.
2. This drawing is subject to change without notice.
3. The package thermal pad must be soldered to the printed circuit board for thermal and mechanical performance.
4. Reference JEDEC registration MO-220.

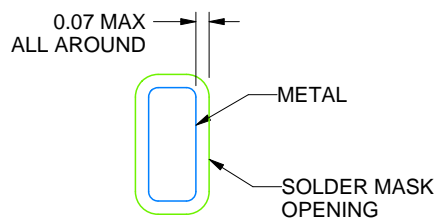
RVF0040A

LQFN-CLIP - 1.52 mm max height

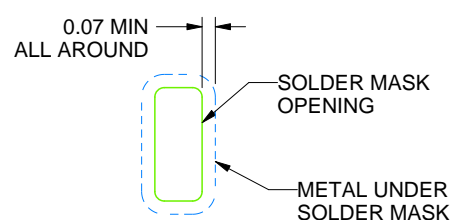
PLASTIC QUAD FLATPACK - NO LEAD



LAND PATTERN EXAMPLE
SCALE:12X



NON SOLDER MASK
DEFINED
(PREFERRED)



SOLDER MASK
DEFINED

SOLDER MASK DETAILS

4222989/B 10/2017

NOTES: (continued)

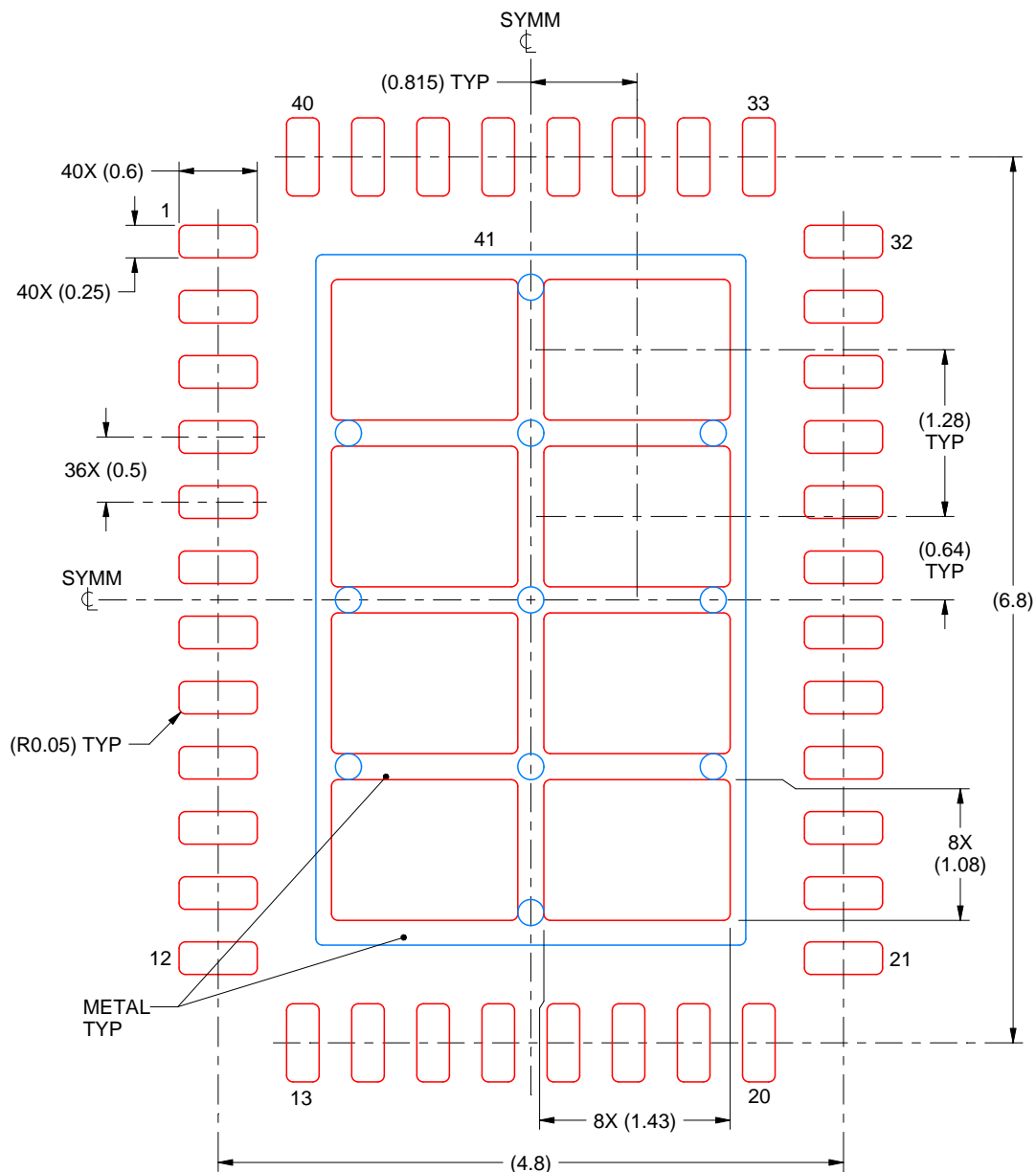
5. This package is designed to be soldered to a thermal pad on the board. For more information, see Texas Instruments literature number SLUA271 (www.ti.com/lit/slua271).

EXAMPLE STENCIL DESIGN

RVF0040A

LQFN-CLIP - 1.52 mm max height

PLASTIC QUAD FLATPACK - NO LEAD



SOLDER PASTE EXAMPLE
 BASED ON 0.125 mm THICK STENCIL

EXPOSED PAD
 71% PRINTED SOLDER COVERAGE BY AREA
 SCALE:18X

4222989/B 10/2017

NOTES: (continued)

6. Laser cutting apertures with trapezoidal walls and rounded corners may offer better paste release. IPC-7525 may have alternate design recommendations.

IMPORTANT NOTICE AND DISCLAIMER

TI PROVIDES TECHNICAL AND RELIABILITY DATA (INCLUDING DATA SHEETS), DESIGN RESOURCES (INCLUDING REFERENCE DESIGNS), APPLICATION OR OTHER DESIGN ADVICE, WEB TOOLS, SAFETY INFORMATION, AND OTHER RESOURCES "AS IS" AND WITH ALL FAULTS, AND DISCLAIMS ALL WARRANTIES, EXPRESS AND IMPLIED, INCLUDING WITHOUT LIMITATION ANY IMPLIED WARRANTIES OF MERCHANTABILITY, FITNESS FOR A PARTICULAR PURPOSE OR NON-INFRINGEMENT OF THIRD PARTY INTELLECTUAL PROPERTY RIGHTS.

These resources are intended for skilled developers designing with TI products. You are solely responsible for (1) selecting the appropriate TI products for your application, (2) designing, validating and testing your application, and (3) ensuring your application meets applicable standards, and any other safety, security, regulatory or other requirements.

These resources are subject to change without notice. TI grants you permission to use these resources only for development of an application that uses the TI products described in the resource. Other reproduction and display of these resources is prohibited. No license is granted to any other TI intellectual property right or to any third party intellectual property right. TI disclaims responsibility for, and you will fully indemnify TI and its representatives against, any claims, damages, costs, losses, and liabilities arising out of your use of these resources.

TI's products are provided subject to [TI's Terms of Sale](#) or other applicable terms available either on [ti.com](https://www.ti.com) or provided in conjunction with such TI products. TI's provision of these resources does not expand or otherwise alter TI's applicable warranties or warranty disclaimers for TI products.

TI objects to and rejects any additional or different terms you may have proposed.

Mailing Address: Texas Instruments, Post Office Box 655303, Dallas, Texas 75265
Copyright © 2025, Texas Instruments Incorporated