

TCAL9539 Low-Voltage 16-Bit I²C-Bus, SMBus I/O Expander with Interrupt Output, Reset, and Configuration Registers

1 Features

- Operating power-supply voltage range of 1.08 V to 3.6 V
- Low standby current consumption of 1 μ A typical at 1.8 mV
- 1-MHz fast mode plus I²C bus
- Hardware address pin allows two devices on the same I²C, SMBus bus
- Active-low reset input ($\overline{\text{RESET}}$)
- Open-drain active-low interrupt output ($\overline{\text{INT}}$)
- Input or output configuration register
- Polarity inversion register
- Configurable I/O drive strength register
- Pull-up and pull-down resistor configuration register
- Internal power-on reset
- Noise filter on SCL or SDA inputs
- Latched outputs with high-current drive maximum capability for directly driving LEDs
- Latch-up performance exceeds 100 mA per JESD 78, class II
- ESD protection exceeds JESD 22
 - 2000-V Human-body model (A114-A)
 - 1000-V Charged-device model (C101)

2 Applications

- Servers
- Routers (telecom switching equipment)
- [Personal computers](#)
- [Personal electronics](#)
- [Industrial automation](#)
- [Gaming](#) consoles
- Products with GPIO-limited processors

3 Description

The TCAL9539 device provides general purpose parallel input/output (I/O) expansion for the two-line bidirectional I²C bus (or SMBus) protocol and is designed for 1.08-V to 3.6-V V_{CC} operation.

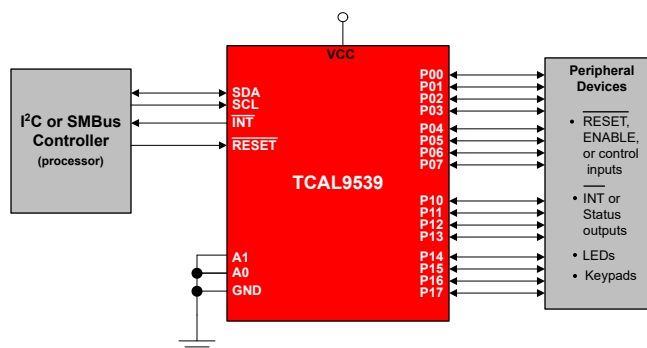
The device supports 100-kHz (Standard-mode), 400-kHz (Fast-mode), and 1-MHz (fast-mode-plus) I²C clock frequencies. I/O expanders such as the TCAL9539 provide a simple solution when additional I/Os are needed for switches, sensors, push-buttons, LEDs, fans, and so on.

The TCAL9539 has Agile I/O ports which include additional features designed to enhance the I/O performance in terms of speed, power consumption and EMI. The additional features are: programmable output drive strength, programmable pull-up and pull-down resistors, latchable inputs, maskable interrupt, interrupt status register, and programmable open-drain or push-pull outputs.

Package Information

| PART NUMBER | PACKAGE ⁽¹⁾ | BODY SIZE (NOM) |
|-------------|------------------------|-------------------|
| TCAL9539 | TSSOP (24) | 7.80 mm × 4.40 mm |
| | WQFN (24) | 4.00 mm × 4.00 mm |

- (1) For all available packages, see the orderable addendum at the end of the data sheet.



Simplified Schematic



Table of Contents

| | | | |
|---|-----------|--|-----------|
| 1 Features | 1 | 8.4 Device Functional Modes..... | 15 |
| 2 Applications | 1 | 8.5 Programming..... | 15 |
| 3 Description | 1 | 8.6 Register Maps..... | 17 |
| 4 Revision History | 2 | 9 Application and Implementation | 25 |
| 5 Pin Configuration and Functions | 3 | 9.1 Application Information..... | 25 |
| 6 Specifications | 4 | 9.2 Typical Application..... | 25 |
| 6.1 Absolute Maximum Ratings..... | 4 | 9.3 Power Supply Recommendations..... | 27 |
| 6.2 ESD Ratings..... | 4 | 9.4 Layout..... | 29 |
| 6.3 Recommended Operating Conditions..... | 4 | 10 Device and Documentation Support | 31 |
| 6.4 Thermal Information..... | 4 | 10.1 Receiving Notification of Documentation Updates.. | 31 |
| 6.5 Electrical Characteristics..... | 5 | 10.2 Support Resources..... | 31 |
| 6.6 Timing Requirements..... | 6 | 10.3 Trademarks..... | 31 |
| 6.7 I ² C Bus Timing Requirements..... | 6 | 10.4 Electrostatic Discharge Caution..... | 31 |
| 6.8 Switching Characteristics..... | 8 | 10.5 Glossary..... | 31 |
| 7 Parameter Measurement Information | 9 | 11 Mechanical, Packaging, and Orderable Information | 31 |
| 8 Detailed Description | 13 | 11.1 Tape and Reel Information..... | 32 |
| 8.1 Overview..... | 13 | 11.2 Mechanical Data..... | 34 |
| 8.2 Functional Block Diagrams..... | 13 | | |
| 8.3 Feature Description..... | 14 | | |

4 Revision History

NOTE: Page numbers for previous revisions may differ from page numbers in the current version.

| Date | Revision | Notes |
|-----------|----------|-----------------|
| July 2022 | * | Initial release |

5 Pin Configuration and Functions

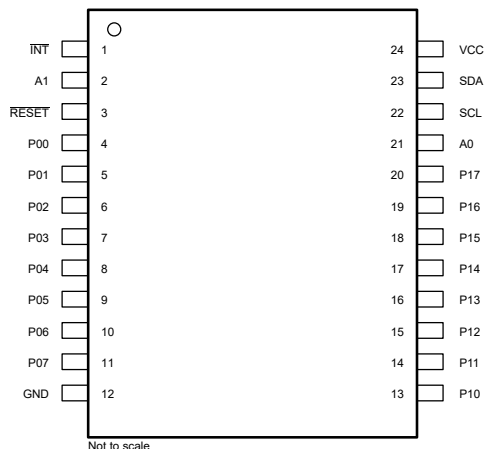


Figure 5-1. PW (TSSOP) Package, 24-Pin (Top View)

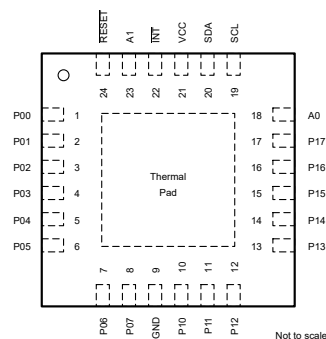


Figure 5-2. RTW (WQFN) Package, 24-Pin (Top View)

Table 5-1. Pin Functions

| NAME | PIN | | | DESCRIPTION |
|-------|------------|------------|---------------------|---|
| | TSSOP (PW) | WQFN (RTW) | TYPE ⁽¹⁾ | |
| A0 | 21 | 18 | I | Address input. Connect directly to V _{CC} or ground |
| A1 | 2 | 23 | I | Address input. Connect directly to V _{CC} or ground |
| GND | 12 | 9 | — | Ground |
| INT | 1 | 22 | O | Interrupt output. Connect to V _{CC} through a pull-up resistor |
| RESET | 3 | 24 | I | Active-low reset input. Connect to V _{CC} through a pull-up resistor if no active connection is used |
| P00 | 4 | 1 | I/O | P-port input/output (push-pull design structure). At power on, P00 is configured as an input |
| P01 | 5 | 2 | I/O | P-port input/output (push-pull design structure). At power on, P01 is configured as an input |
| P02 | 6 | 3 | I/O | P-port input/output (push-pull design structure). At power on, P02 is configured as an input |
| P03 | 7 | 4 | I/O | P-port input/output (push-pull design structure). At power on, P03 is configured as an input |
| P04 | 8 | 5 | I/O | P-port input/output (push-pull design structure). At power on, P04 is configured as an input |
| P05 | 9 | 6 | I/O | P-port input/output (push-pull design structure). At power on, P05 is configured as an input |
| P06 | 10 | 7 | I/O | P-port input/output (push-pull design structure). At power on, P06 is configured as an input |
| P07 | 11 | 8 | I/O | P-port input/output (push-pull design structure). At power on, P07 is configured as an input |
| P10 | 13 | 10 | I/O | P-port input/output (push-pull design structure). At power on, P10 is configured as an input |
| P11 | 14 | 11 | I/O | P-port input/output (push-pull design structure). At power on, P11 is configured as an input |
| P12 | 15 | 12 | I/O | P-port input/output (push-pull design structure). At power on, P12 is configured as an input |
| P13 | 16 | 13 | I/O | P-port input/output (push-pull design structure). At power on, P13 is configured as an input |
| P14 | 17 | 14 | I/O | P-port input/output (push-pull design structure). At power on, P14 is configured as an input |
| P15 | 18 | 15 | I/O | P-port input/output (push-pull design structure). At power on, P15 is configured as an input |
| P16 | 19 | 16 | I/O | P-port input/output (push-pull design structure). At power on, P16 is configured as an input |
| P17 | 20 | 17 | I/O | P-port input/output (push-pull design structure). At power on, P17 is configured as an input |
| SCL | 22 | 19 | I | Serial clock bus. Connect to V _{CC} through a pull-up resistor |
| SDA | 23 | 20 | I/O | Serial data bus. Connect to V _{CC} through a pull-up resistor |
| VCC | 24 | 21 | — | Supply voltage |

(1) I = Input, O = Output, I/O = Input or Output

6 Specifications

6.1 Absolute Maximum Ratings

over operating free-air temperature range (unless otherwise noted)⁽¹⁾

| | | | MIN | MAX | UNIT |
|------------------|--|--|------|------|------|
| V _{CC} | Supply voltage | | –0.5 | 4 | V |
| V _I | Input voltage ⁽²⁾ | | –0.5 | 4 | V |
| V _O | Output voltage ⁽²⁾ | | –0.5 | 4 | V |
| I _{IK} | Input clamp current | V _I < 0 | | ±20 | mA |
| I _{OK} | Output clamp current | V _O < 0 | | ±20 | mA |
| I _{IOK} | Input-output clamp current | V _O < 0 or V _O > V _{CC} | | ±20 | mA |
| I _{OL} | Continuous output low current | V _O = 0 to V _{CC} | | 50 | mA |
| I _{OH} | Continuous output high current | V _O = 0 to V _{CC} | | –50 | mA |
| I _{CC} | Continuous current through GND | | | –200 | mA |
| I _{CC} | Continuous current through V _{CC} | | | 160 | mA |
| T _J | Junction temperature | | | 130 | °C |
| T _{stg} | Storage temperature | | –65 | 150 | °C |

- (1) Operation outside the Absolute Maximum Ratings may cause permanent device damage. Absolute Maximum Ratings do not imply functional operation of the device at these or any other conditions beyond those listed under Recommended Operating Conditions. If used outside the Recommended Operating Conditions but within the Absolute Maximum Ratings, the device may not be fully functional, and this may affect device reliability, functionality, performance, and shorten the device lifetime.
- (2) The input negative-voltage and output voltage ratings may be exceeded if the input and output current ratings are observed.

6.2 ESD Ratings

| | | | VALUE | UNIT |
|--------------------|-------------------------|---|-------|------|
| V _(ESD) | Electrostatic discharge | Human body model (HBM), per ANSI/ESDA/JEDEC JS-001, all pins ⁽¹⁾ | ±4000 | V |
| | | Charged device model (CDM), per ANSI/ESDA/JEDEC specification JS-002, all pins ⁽²⁾ | ±1000 | |

- (1) JEDEC document JEP155 states that 500-V HBM allows safe manufacturing with a standard ESD control process.
- (2) JEDEC document JEP157 states that 250-V CDM allows safe manufacturing with a standard ESD control process.

6.3 Recommended Operating Conditions

over operating free-air temperature range (unless otherwise noted)

| | | | MIN | MAX | UNIT |
|-----------------|---------------------------|----------|-----------------------|-----------------------|------|
| V _{CC} | Supply voltage | | 1.08 | 3.6 | V |
| V _{IH} | High-level input voltage | All Pins | 0.7 * V _{CC} | 3.6 | V |
| V _{IL} | Low-level input voltage | All Pins | –0.5 | 0.3 * V _{CC} | V |
| I _{OH} | High-level output current | P00-P17 | | –10 | mA |
| I _{OL} | Low-level output current | P00-P17 | | 25 | mA |
| T _A | Ambient temperature | | –40 | 125 | °C |
| T _J | Junction temperature | | | 125 | °C |

6.4 Thermal Information

| THERMAL METRIC ⁽¹⁾ | | Package | | UNIT |
|-------------------------------|--|------------|------------|------|
| | | PW (TSSOP) | RTW (WQFN) | |
| | | PINS | PINS | |
| R _{θJA} | Junction-to-ambient thermal resistance | 101.4 | 47.1 | °C/W |

6.4 Thermal Information (continued)

| THERMAL METRIC ⁽¹⁾ | | Package | | UNIT |
|-------------------------------|--|------------|------------|------|
| | | PW (TSSOP) | RTW (WQFN) | |
| | | PINS | PINS | |
| $R_{\theta JC(top)}$ | Junction-to-case (top) thermal resistance | 45.2 | 41.2 | °C/W |
| $R_{\theta JB}$ | Junction-to-board thermal resistance | 56.6 | 26.6 | °C/W |
| Ψ_{JT} | Junction-to-top characterization parameter | 6.9 | 2.2 | °C/W |
| Ψ_{JB} | Junction-to-board characterization parameter | 56.2 | 26.5 | °C/W |
| $R_{\theta JC(bot)}$ | Junction-to-case (bottom) thermal resistance | NA | 15.8 | °C/W |

(1) For more information about traditional and new thermal metrics, see the [Semiconductor and IC Package Thermal Metrics](#) application report.

6.5 Electrical Characteristics

over operating free-air temperature range (unless otherwise noted)

| PARAMETER | | | TEST CONDITIONS | V _{CC} | MIN | TYP | MAX | UNIT |
|-------------------|---|------------------|---|-----------------|------|------|------|------|
| V _{IK} | Input diode clamp voltage | | I _I = −18 mA | 1.08 V to 3.6 V | −1.2 | | | V |
| V _{PORR} | Power-on reset voltage, V _{CC} rising | | V _I = V _{CC} or GND, I _O = 0 | | | 0.85 | 1.0 | V |
| V _{PORF} | Power-on reset voltage, V _{CC} falling | | V _I = V _{CC} or GND, I _O = 0 | | 0.6 | 0.75 | | V |
| V _{OH} | P-port high-level output voltage | | I _{OH} = −8 mA; CCX.X = 11b | 1.08 V | 0.8 | | | V |
| | | | | 1.65 V | 1.4 | | | |
| | | | | 2.3 V | 2.1 | | | |
| | | | | 3 V | 2.8 | | | |
| | | | I _{OH} = −2.5mA & CCX.X = 00b; I _{OH} = −5mA & CCX.X = 01b; I _{OH} = −7.5mA & CCX.X = 10b; I _{OH} = −10mA & CCX.X = 11b; | 1.08 V | 0.75 | | | |
| | | | | 1.65 V | 1.4 | | | |
| | | | | 2.3 V | 2.1 | | | |
| | | | | 3 V | 2.8 | | | |
| V _{OL} | Low-level output voltage | P ports | I _{OL} = 8 mA; CCX.X = 11b | 1.08 V | | | 0.2 | V |
| | | | | 1.65 V | | | 0.15 | |
| | | | | 2.3 V | | | 0.1 | |
| | | | | 3.0 V | | | 0.1 | |
| | | P ports | I _{OL} = 2.5 mA and CCX.X = 00b; I _{OL} = 5 mA and CCX.X = 01b; I _{OL} = 7.5 mA and CCX.X = 10b; I _{OL} = 10 mA and CCX.X = 11b; | 1.08 V | | | 0.25 | V |
| | | | | 1.65 V | | | 0.15 | |
| | | | | 2.3 V | | | 0.1 | |
| | | | | 3.0 V | | | 0.1 | |
| I _{OL} | Low-level output current | SDA | V _{OL} = 0.4 V | 1.08 V to 3.6 V | 20 | | mA | |
| | | INT | V _{OL} = 0.4 V | | 4 | | | |
| I _I | Input leakage current | P ports | V _I = V _{CC} or GND | 1.08 V to 3.6 V | | | ±1 | μA |
| | | | V _I = 3.6 V | 0 V | | | ±1 | |
| I _I | Input leakage current | SCL, SDA, RESETZ | V _I = V _{CC} or GND | 1.08 V to 3.6 V | | | ±1 | |
| I _I | Input leakage current | A0, A1 | V _I = V _{CC} or GND | 1.08 V to 3.6 V | | | ±1 | μA |

6.5 Electrical Characteristics (continued)

over operating free-air temperature range (unless otherwise noted)

| PARAMETER | | | TEST CONDITIONS | V _{CC} | MIN | TYP | MAX | UNIT |
|----------------------|-------------------------------|--------------------------|--|-----------------|-----|-----|-----|------|
| I _{CC} | Quiescent current | Operating mode (400 kHz) | SDA, $\overline{\text{RESET}} = V_{CC}$, P ports, ADDR = V _{CC} or GND, I/O = inputs, f _{SCL} = 400 kHz | 3.6 V | | 11 | 15 | μA |
| | | | | 2.7 V | | 8 | 10 | |
| | | | | 1.95 V | | 5 | 8 | |
| | | | | 1.32 V | | 2 | 5 | |
| | | Operating mode (1 MHz) | SDA, $\overline{\text{RESET}} = V_{CC}$, P ports, ADDR = V _{CC} or GND, I/O = inputs, f _{SCL} = 1 MHz | 3.6 V | | | 38 | μA |
| | | | | 2.7 V | | | 28 | |
| | | | | 1.95 V | | | 18 | |
| | | | | 1.32 V | | | 15 | |
| | | Standby mode | SDA, $\overline{\text{RESET}} = V_{CC}$, P port, ADDR = V _{CC} or GND, I/O = inputs, I _O = 0, f _{SCL} = 0 kHz, -40 °C < T _A ≤ 85 °C | 3.6 V | | 1 | 2.5 | μA |
| | | | | 2.7 V | | 0.8 | 2.0 | |
| | | | | 1.95 V | | 0.6 | 1.6 | |
| | | | | 1.32 V | | 0.6 | 1.4 | |
| | | | SDA, $\overline{\text{RESET}} = V_{CC}$, P port, ADDR = V _{CC} or GND, I/O = inputs, I _O = 0, f _{SCL} = 0 kHz, 85 °C < T _A ≤ 125 °C | 3.6 V | | | 7 | μA |
| | | | | 2.7 V | | | 6 | |
| | | | | 1.95 V | | | 5 | |
| | | | | 1.32 V | | | 4 | |
| R _{pu(int)} | internal pull-up resistance | P port | | | 70 | 100 | 140 | kΩ |
| R _{pd(int)} | internal pull-down resistance | | | | | | | |
| C _I | Input pin capacitance | SCL | V _I = V _{CC} or GND | 1.08 V to 3.6 V | | 2.5 | 3 | pF |
| C _{IO} | Input-output pin capacitance | SDA | V _{IO} = V _{CC} or GND | 1.08 V to 3.6 V | | 6 | 7 | pF |
| | | P port | V _{IO} = V _{CC} or GND | 1.08 V to 3.6 V | | 6 | 7 | |

6.6 Timing Requirements

over operating free-air temperature range (unless otherwise noted)

| | | | MIN | MAX | UNIT |
|--------------------|--|--|-----|-----|------|
| RESET | | | | | |
| t _w | Reset pulse duration | | 80 | | ns |
| t _{REC} | Reset recovery time | | 0 | | ns |
| t _{RESET} | Time to reset | | 400 | | ns |
| P-Ports | | | | | |
| t _{PH} | Minimum pulse width on P-Port that causes an interrupt | | 30 | | ns |

6.7 I²C Bus Timing Requirements

over operating free-air temperature range (unless otherwise noted)

| | | | MIN | MAX | UNIT |
|---|---|--|-----|------|------|
| I²C Bus - Standard Mode | | | | | |
| f _{scl} | I ² C clock frequency | | 0 | 100 | kHz |
| t _{sch} | I ² C clock high time | | 4 | | μs |
| t _{scl} | I ² C clock low time | | 4.7 | | μs |
| t _{sp} | I ² C spike time | | | 50 | ns |
| t _{sds} | I ² C serial-data setup time | | 250 | | ns |
| t _{sdh} | I ² C serial-data hold time | | 0 | | ns |
| t _{icr} | I ² C input rise time | | | 1000 | ns |

6.7 I²C Bus Timing Requirements (continued)

over operating free-air temperature range (unless otherwise noted)

| | | | MIN | MAX | UNIT |
|--|--|--|--------------------------------|------|------|
| t _{icf} | I ² C input fall time | | | 300 | ns |
| t _{ocf} | I ² C output fall time | 10-pF to 400-pF bus | | 300 | ns |
| t _{buf} | I ² C bus free time between stop and start | | 4.7 | | μs |
| t _{sts} | I ² C start or repeated start condition setup | | 4.7 | | μs |
| t _{sth} | I ² C start or repeated start condition hold | | 4 | | μs |
| t _{sps} | I ² C stop condition setup | | 4 | | μs |
| t _{vd(data)} | Valid data time | SCL low to SDA output valid | | 3.45 | μs |
| t _{vd(ack)} | Valid data time of ACK condition | ACK signal from SCL low to SDA (out) low | | 3.45 | μs |
| C _b | I ² C bus capacitive load | | | 400 | pF |
| I²C Bus - Fast Mode | | | | | |
| f _{scl} | I ² C clock frequency | | 0 | 400 | kHz |
| t _{sch} | I ² C clock high time | | 0.6 | | μs |
| t _{scl} | I ² C clock low time | | 1.3 | | μs |
| t _{sp} | I ² C spike time | | | 50 | ns |
| t _{sds} | I ² C serial-data setup time | | 100 | | ns |
| t _{sdh} | I ² C serial-data hold time | | 0 | | ns |
| t _{icr} | I ² C input rise time | | 20 | 300 | ns |
| t _{icf} | I ² C input fall time | | 20 × (V _{CC} / 5.5 V) | 300 | ns |
| t _{ocf} | I ² C output fall time | 10-pF to 400-pF bus | 20 × (V _{CC} / 5.5 V) | 300 | ns |
| t _{buf} | I ² C bus free time between stop and start | | 1.3 | | μs |
| t _{sts} | I ² C start or repeated start condition setup | | 0.6 | | μs |
| t _{sth} | I ² C start or repeated start condition hold | | 0.6 | | μs |
| t _{sps} | I ² C stop condition setup | | 0.6 | | μs |
| t _{vd(data)} | Valid data time | SCL low to SDA output valid | | 0.9 | μs |
| t _{vd(ack)} | Valid data time of ACK condition | ACK signal from SCL low to SDA (out) low | | 0.9 | μs |
| C _b | I ² C bus capacitive load | | | 400 | pF |
| I²C Bus - Fast Mode Plus | | | | | |
| f _{scl} | I ² C clock frequency | | 0 | 1000 | kHz |
| t _{sch} | I ² C clock high time | | 0.26 | | μs |
| t _{scl} | I ² C clock low time | | 0.5 | | μs |
| t _{sp} | I ² C spike time | | | 50 | ns |
| t _{sds} | I ² C serial-data setup time | | 50 | | ns |
| t _{sdh} | I ² C serial-data hold time | | 0 | | ns |
| t _{icr} | I ² C input rise time | | | 120 | ns |
| t _{icf} | I ² C input fall time | | 20 × (V _{CC} / 5.5 V) | 120 | ns |
| t _{ocf} | I ² C output fall time | 10-pF to 550-pF bus | 20 × (V _{CC} / 5.5 V) | 120 | ns |
| t _{buf} | I ² C bus free time between stop and start | | 0.5 | | μs |
| t _{sts} | I ² C start or repeated start condition setup | | 0.26 | | μs |
| t _{sth} | I ² C start or repeated start condition hold | | 0.26 | | μs |
| t _{sps} | I ² C stop condition setup | | 0.26 | | μs |
| t _{vd(data)} | Valid data time | SCL low to SDA output valid | | 0.45 | μs |

6.7 I²C Bus Timing Requirements (continued)

over operating free-air temperature range (unless otherwise noted)

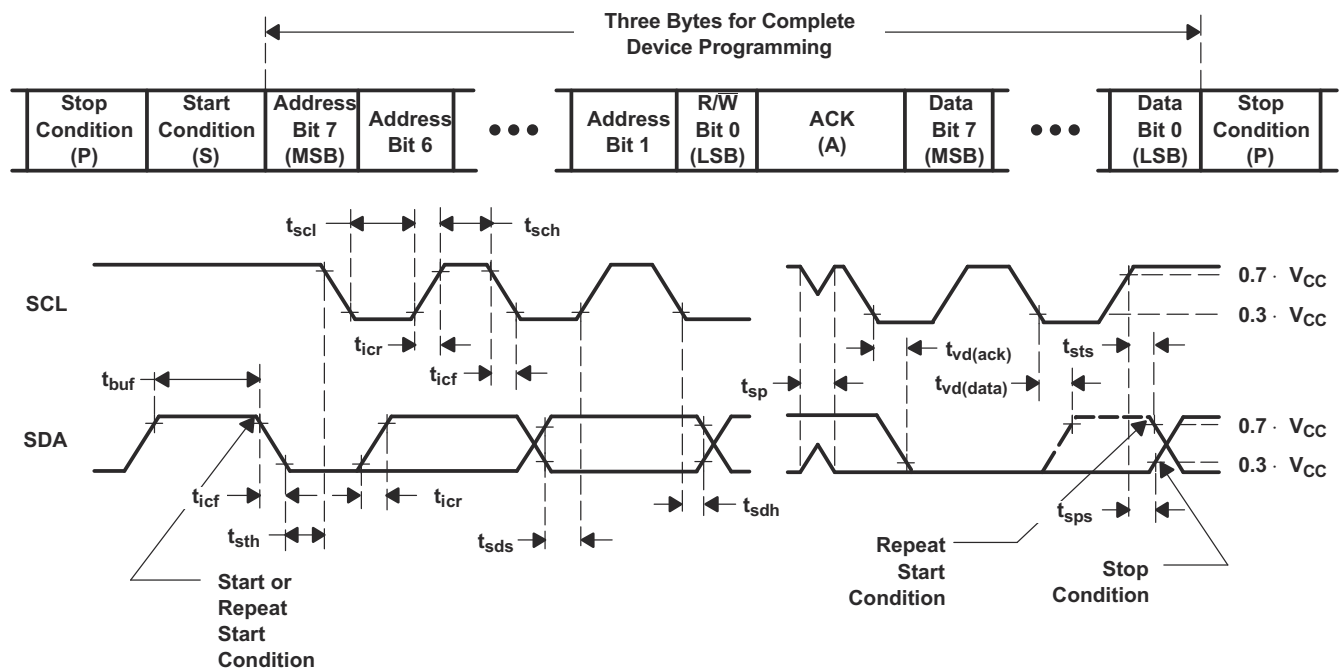
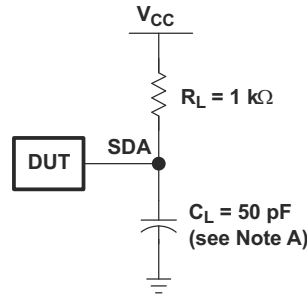
| | | | MIN | MAX | UNIT |
|----------------------|--------------------------------------|--|-----|------|------|
| t _{vd(ack)} | Valid data time of ACK condition | ACK signal from SCL low to SDA (out) low | | 0.45 | μs |
| C _b | I ² C bus capacitive load | | | 550 | pF |

6.8 Switching Characteristics

over operating free-air temperature range (unless otherwise noted)

| PARAMETER | | FROM (INPUT) | TO (OUTPUT) | MIN | TYP | MAX | UNIT |
|-----------------|----------------------------|--------------|------------------|-----|-----|-----|------|
| t _{iv} | Interrupt valid time | P port | INT [‾] | | | 1 | μs |
| t _{ir} | Interrupt reset delay time | SCL | INT [‾] | | | 1 | μs |
| t _{pV} | Output data valid time | SCL | P port | | | 400 | ns |
| t _{ps} | Input data setup time | P port | SCL | 0 | | | ns |
| t _{ph} | Input data hold time | P port | SCL | 300 | | | ns |

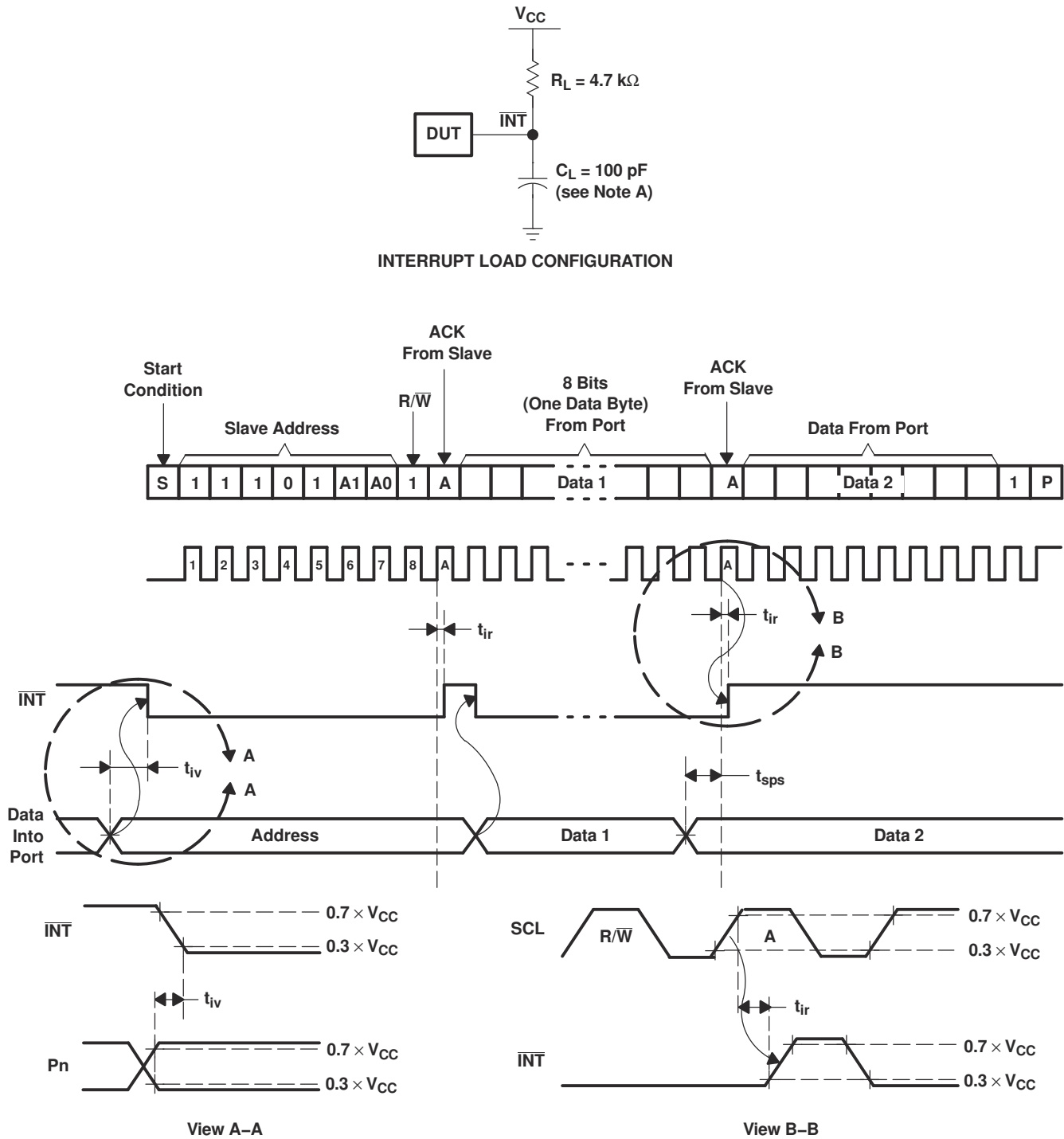
7 Parameter Measurement Information



| BYTE | DESCRIPTION |
|------|--------------------------|
| 1 | I ² C address |
| 2, 3 | P-port data |

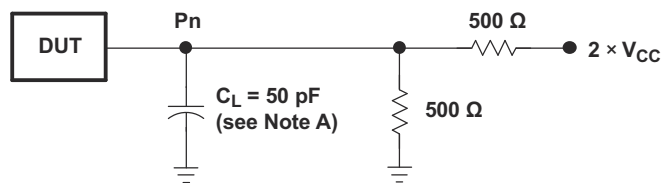
- A. C_L includes probe and jig capacitance. t_{icf} is measured with C_L of 10 pF or 400 pF.
 B. All inputs are supplied by generators having the following characteristics: $PRR \leq 10$ MHz, $Z_O = 50 \Omega$, $t_r/t_f \leq 30$ ns.
 C. All parameters and waveforms are not applicable to all devices.

Figure 7-1. I²C Interface Load Circuit and Voltage Waveforms

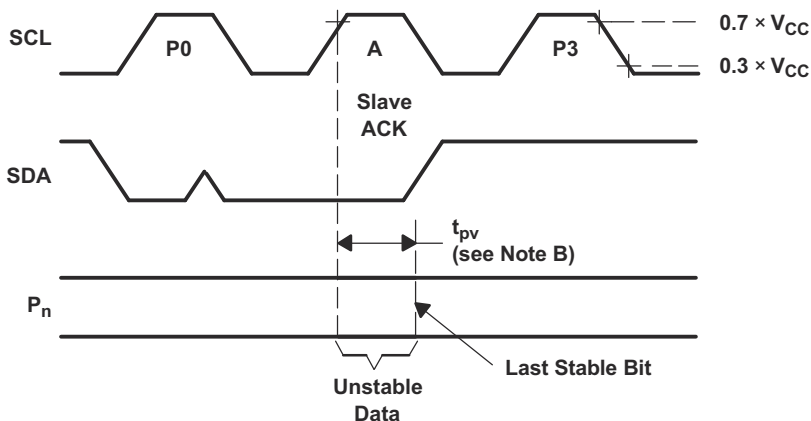


- A. C_L includes probe and jig capacitance.
- B. All inputs are supplied by generators having the following characteristics: $PRR \leq 10 \text{ MHz}$, $Z_O = 50 \Omega$, $t_r/t_f \leq 30 \text{ ns}$.
- C. All parameters and waveforms are not applicable to all devices.

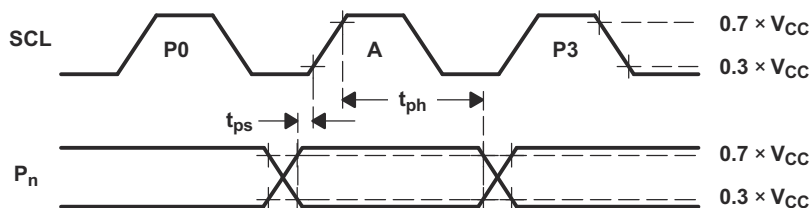
Figure 7-2. Interrupt Load Circuit and Voltage Waveforms



P-PORT LOAD CONFIGURATION



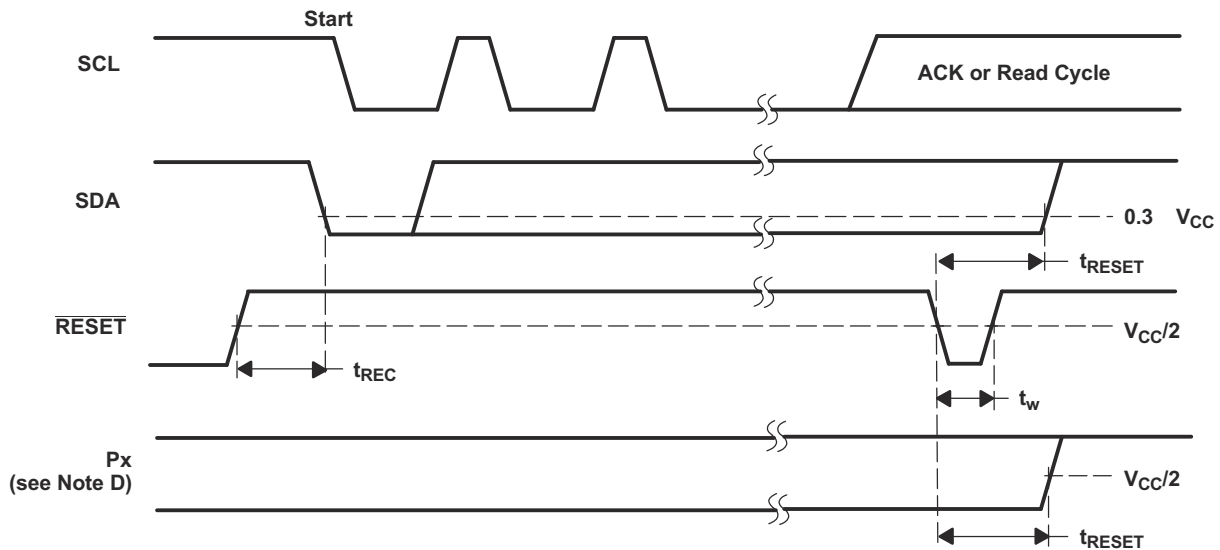
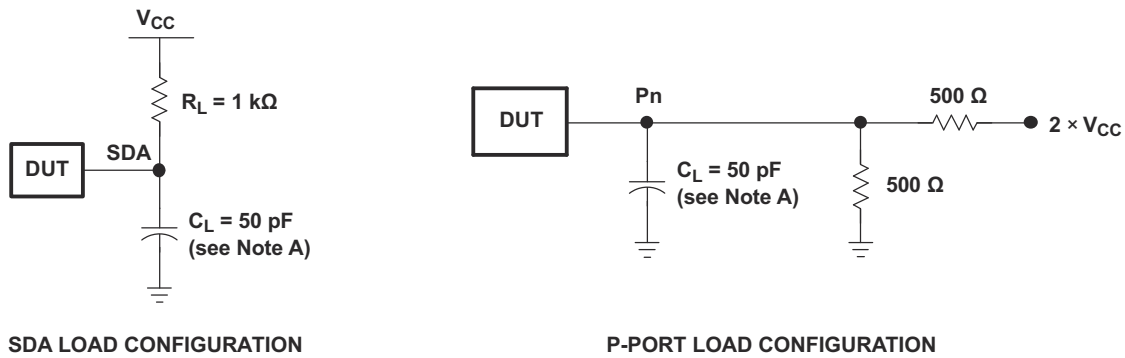
WRITE MODE (R/W = 0)



READ MODE (R/W = 1)

- A. C_L includes probe and jig capacitance.
- B. t_{pv} is measured from 0.7 × V_{CC} on SCL to 50% I/O (P_n) output.
- C. All inputs are supplied by generators having the following characteristics: PRR ≤ 10 MHz, Z_O = 50 Ω, t_r/t_f ≤ 30 ns.
- D. The outputs are measured one at a time, with one transition per measurement.
- E. All parameters and waveforms are not applicable to all devices.

Figure 7-3. P-Port Load Circuit and Timing Waveforms



- A. C_L includes probe and jig capacitance.
- B. All inputs are supplied by generators having the following characteristics: $PRR \leq 10\text{ MHz}$, $Z_O = 50\text{ }\Omega$, $t_r/t_f \leq 30\text{ ns}$.
- C. The outputs are measured one at a time, with one transition per measurement.
- D. I/Os are configured as inputs.
- E. All parameters and waveforms are not applicable to all devices.

Figure 7-4. Reset Load Circuits and Voltage Waveforms

8 Detailed Description

8.1 Overview

The TCAL9539 digital core consists of 8-bit data registers which allow the user to configure the I/O port characteristics. At power on or after a reset, the I/Os are configured as inputs. However, the system controller can configure the I/Os as either inputs or outputs by writing to the Configuration registers. The data for each input or output is kept in the corresponding Input Port or Output Port register. The polarity of the Input Port register can be inverted with the Polarity Inversion register. All registers can be read by the system controller. Additionally, the TCAL9539 has Agile I/O functionality which is specifically targeted to enhance the I/O ports. The Agile I/O features and registers include programmable output drive strength, programmable pull-up and pull-down resistors, latching inputs, maskable interrupts, interrupt status register, and programmable open-drain or push-pull outputs. These configuration registers improve the I/O by increasing flexibility and allowing the user to optimize their design for power consumption, speed, and EMI.

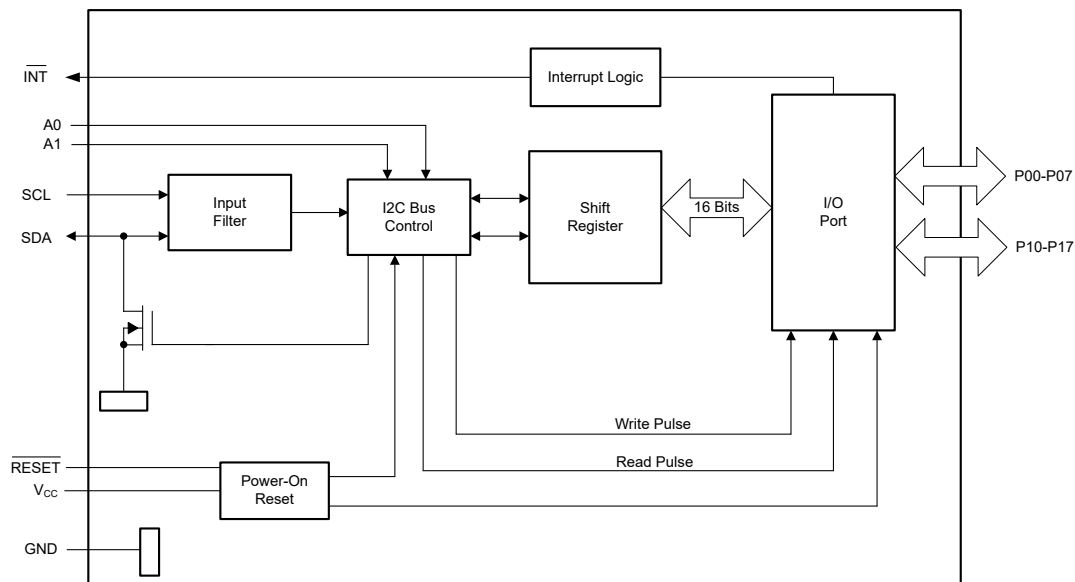
Other features of the device include an interrupt that is generated on the $\overline{\text{INT}}$ pin whenever an input port changes state. The device can be reset to its default state by applying a low logic level to the $\overline{\text{RESET}}$ pin, issuing a software reset command, or by cycling power to the device and causing a power-on reset. The hardware selectable address pins allow multiple TCAL9539 devices to be connected to the same I²C bus.

The TCAL9539 open-drain interrupt ($\overline{\text{INT}}$) output is activated when any input state differs from its corresponding Input Port register state and is used to indicate to the system controller that an input state has changed. The $\overline{\text{INT}}$ pin can be connected to the interrupt input of a processor. By sending an interrupt signal on this line, the device can inform the processor if there is incoming data on the remote I/O ports without having to communicate via the I²C bus. Thus, the device can remain a simple responder device.

The system controller can reset the device in the event of a timeout or other improper operation by asserting a low on the $\overline{\text{RESET}}$ input pin or by cycling the power to the V_{CC} pin and causing a power-on reset (POR). A reset puts the registers in their default state and initializes the I²C /SMBus state machine. The $\overline{\text{RESET}}$ feature and a POR cause the same reset/initialization to occur, but the $\overline{\text{RESET}}$ feature does so without needing to power down the device.

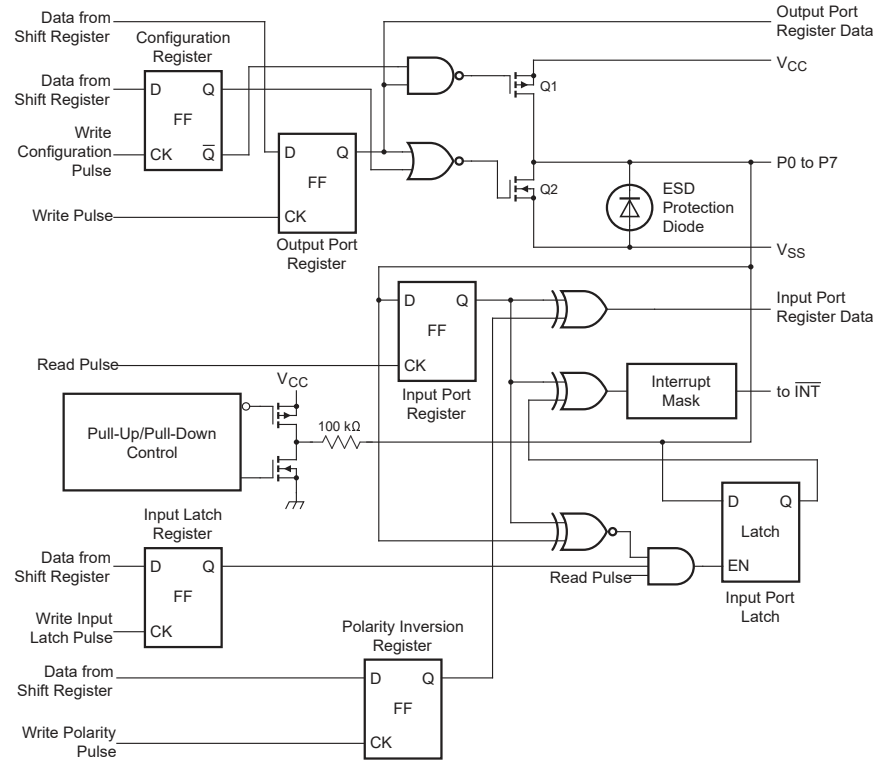
Two hardware pins (A0 and A1) can be used to program and vary the fixed I²C address and allow multiple devices to share the same I²C bus or SMBus.

8.2 Functional Block Diagrams



A. All I/Os are set to inputs at reset.

Figure 8-1. Logic Diagram (Positive Logic)



A. On power up or reset, all registers return to default values.

Figure 8-2. Simplified Schematic of P0 to P7

8.3 Feature Description

8.3.1 I/O Port

When an I/O is configured as an input, FETs Q1 and Q2 are off (see Figure 8-2), which creates a high-impedance input. The input voltage may be raised above the supply voltage to a maximum of 3.6V.

If the I/O is configured as an output, Q1 or Q2 is enabled, depending on the state of the output port register. In this case, there are low-impedance paths between the I/O pin and either supply or GND. The external voltage applied to this I/O pin should not exceed the recommended levels for proper operation.

8.3.2 Adjustable Output Drive Strength

The Output drive strength registers allow the user to control the drive level of the GPIO. Each GPIO can be configured independently to one of the four possible current levels. By programming these bits the user is changing the number of transistor pairs or 'fingers' that drive the I/O pad. Figure 8-3 shows a simplified output stage. The behavior of the pad is affected by the Configuration register, the output port data, and the current control register. When the Current Control register bits are programmed to 10b, then only two of the fingers are active, reducing the current drive capability by 50%.

Reducing the current drive capability may be desirable to reduce system noise. When the output switches there is a peak current that is a function of the output drive selection. This peak current runs through the supply and GND package inductances and creates a noise (some radiated, but more critically Simultaneous Switching Noise (SSN)). In other words, switching many outputs at the same time will create ground and supply noise. The output drive strength control through the Output Drive Strength registers allows the user to mitigate SSN issues without the need of additional external components.

8.3.3 Interrupt Output ($\overline{\text{INT}}$)

An interrupt is generated by any rising or falling edge of the port inputs in the input mode provided the interrupt feature is unmasked. After time t_{iv} , the $\overline{\text{INT}}$ signal is valid. Resetting the interrupt circuit is achieved when

data on the port is changed back to the original setting or when data is read from the port that generated the interrupt. Resetting occurs in the read mode at the acknowledge (ACK) bit after the rising edge of the SCL signal. Interrupts that occur during the ACK clock pulse can be lost (or be very short) due to the resetting of the interrupt during this pulse. Each change of the I/Os after resetting is detected and is transmitted as $\overline{\text{INT}}$.

Reading from or writing to another device does not affect the interrupt circuit, and a pin configured as an output cannot cause an interrupt. Changing an I/O from an output to an input may cause a false interrupt to occur if the state of the pin does not match the contents of the Input Port register.

The $\overline{\text{INT}}$ output has an open-drain structure and requires an external pull-up resistor to V_{CC} .

8.3.4 Reset Input ($\overline{\text{RESET}}$)

The $\overline{\text{RESET}}$ input can be asserted to initialize the system while keeping the V_{CC} supply at its operating level. A reset can be accomplished by holding the $\overline{\text{RESET}}$ pin low for a minimum of t_W . The TCAL9539 registers and I²C/SMBus state machine are changed to their default state once $\overline{\text{RESET}}$ is low (0). When $\overline{\text{RESET}}$ is high (1), the I/O levels at the P port can be changed externally or through the controller. This input requires a pull-up resistor to V_{CC} , if no active connection is used. When $\overline{\text{RESET}}$ is toggled the input port register is updated to reflect the state of the GPIO pins.

8.3.5 Software Reset Call

The Software Reset call is a command sent from the controller on the I2C bus that instructs all devices that support the command to be reset to the power-up default state. In order for it to function as expected, the I2C bus must be functional and no devices can be hanging the bus.

The Software Reset Call is defined as the following steps:

1. A start condition is sent by the I2C bus controller.
2. The address used is the reserved General Call I2C bus address '0000 0000' with the R/W bit set to 0. The byte sent is 0x00.
3. Any devices supporting the General Call functionality will ACK. If the R/W bit is set to 1 (read), the device will NACK.
4. Once the General Call address is acknowledged, the controller sends only 1 byte of data equal to 0x06. If the data byte is any other value, the device will not acknowledge or reset. If more than 1 byte is sent, no more bytes will be acknowledged, and the device will ignore the I2C message considering it invalid.
5. After the 1 byte of data (0x06) is sent, the controller sends a STOP condition to end the Software Reset sequence. A repeated START condition will be ignored by the device and no reset is performed.

Once the above steps are completed successfully, the device will perform a reset. This will clear all register values back to power-on defaults. The input port register is also updated to reflect the state of the GPIO pins.

8.4 Device Functional Modes

8.4.1 Power-On Reset

When power (from 0 V) is applied to V_{CC} , an internal power-on reset holds the TCAL9539 in a reset condition until the supply has reached V_{POR} . At that time, the reset condition is released, and the TCAL9539 registers and I²C/SMBus state machine initializes to their default states. After that, V_{CC} must be lowered to below V_{PORF} and back up to the operating voltage for a power-reset cycle.

8.5 Programming

8.5.1 I²C Interface

The bidirectional I²C bus consists of the serial clock (SCL) and serial data (SDA) lines. Both lines must be connected to a positive supply through a pull-up resistor when connected to the output stages of a device. Data transfer may be initiated only when the bus is not busy.

I²C communication with this device is initiated by a controller sending a Start condition, a high-to-low transition on the SDA input/output, while the SCL input is high (see [Figure 8-3](#)). After the Start condition, the device address byte is sent, most significant bit (MSB) first, including the data direction bit (R/ \overline{W}).

After receiving the valid address byte, this device responds with an acknowledge (ACK), a low on the SDA input/output during the high of the ACK-related clock pulse. The address input of the responder device must not be changed between the Start and the Stop conditions.

On the I²C bus, only one data bit is transferred during each clock pulse. The data on the SDA line must remain stable during the high pulse of the clock period, as changes in the data line at this time are interpreted as control commands (Start or Stop) (see Figure 8-4).

A Stop condition, a low-to-high transition on the SDA input/output while the SCL input is high, is sent by the controller (see Figure 8-3).

Any number of data bytes can be transferred from the transmitter to receiver between the Start and the Stop conditions. Each byte of eight bits is followed by one ACK bit. The transmitter must release the SDA line before the receiver can send an ACK bit. The device that acknowledges must pull down the SDA line during the ACK clock pulse, so that the SDA line is stable low during the high pulse of the ACK-related clock period (see Figure 8-5). When a responder receiver is addressed, it must generate an ACK after each byte is received. Similarly, the controller must generate an ACK after each byte that it receives from the responder transmitter. Setup and hold times must be met to ensure proper operation.

A controller receiver signals an end of data to the responder transmitter by not generating an acknowledge (NACK) after the last byte has been clocked out of the responder. This is done by the controller receiver by holding the SDA line high. In this event, the transmitter must release the data line to enable the controller to generate a Stop condition.

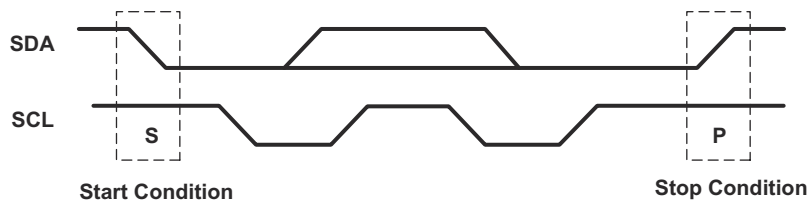


Figure 8-3. Definition of Start and Stop Conditions

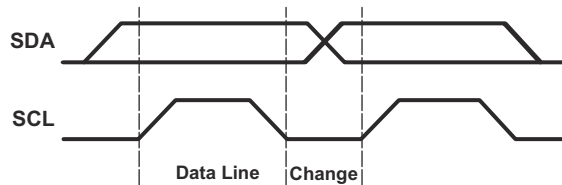


Figure 8-4. Bit Transfer

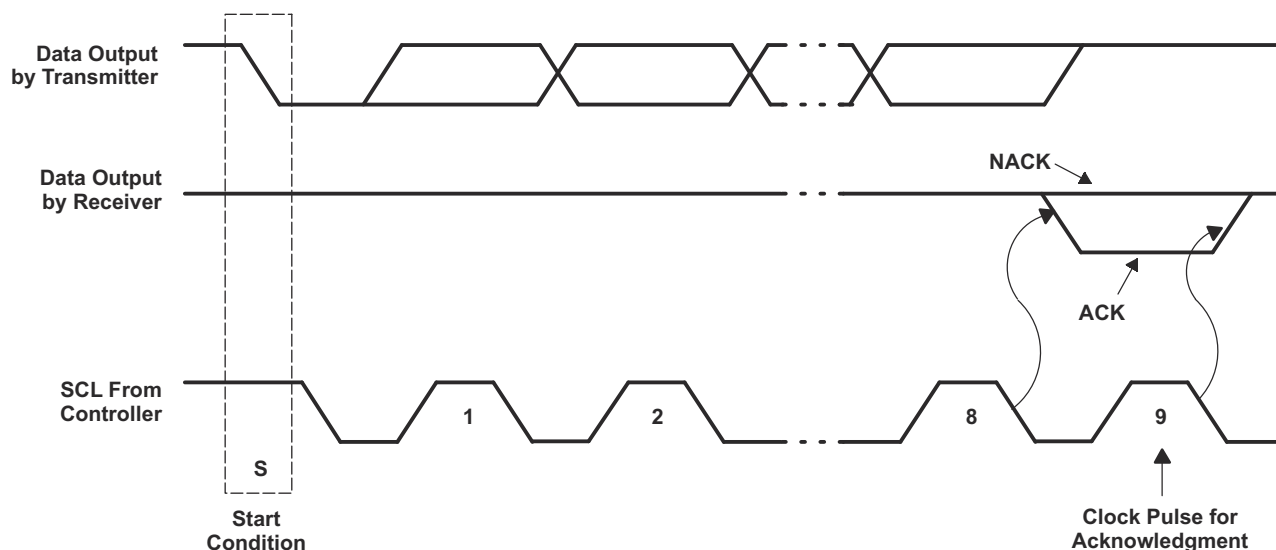


Figure 8-5. Acknowledgment on the I²C Bus

Table 8-1. Interface Definition

| BYTE | BIT | | | | | | | |
|---------------------------------|---------|-----|-----|-----|-----|-----|-----|---------|
| | 7 (MSB) | 6 | 5 | 4 | 3 | 2 | 1 | 0 (LSB) |
| Device I ² C address | H | H | H | L | H | A1 | A0 | R/ W |
| I/O data bus | P07 | P06 | P05 | P04 | P03 | P02 | P01 | P00 |
| | P17 | P16 | P15 | P14 | P13 | P12 | P11 | P10 |

8.6 Register Maps

8.6.1 Device Address

The address of the TCAL9539 is shown in [Figure 8-6](#).

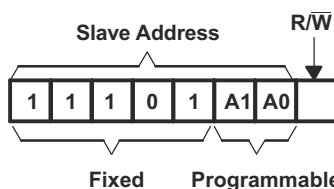


Figure 8-6. TCAL9539 Address

Table 8-2. Address Reference

| Inputs | | I ² C BUS RESPONDER ADDRESS |
|--------|----|--|
| A1 | A0 | |
| L | L | 116 (decimal), 74 (hexadecimal) |
| L | H | 117 (decimal), 75 (hexadecimal) |
| H | L | 118 (decimal), 76 (hexadecimal) |
| H | H | 119 (decimal), 77 (hexadecimal) |

The last bit of the responder address defines the operation (read or write) to be performed. A high (1) selects a read operation, while a low (0) selects a write operation.

8.6.2 Control Register and Command Byte

Following the successful acknowledgment of the address byte, the bus controller sends a command byte, which is stored in the control register in the TCAL9539. The lower bits of this data byte reflect the internal registers (input, output, polarity inversion, or configuration) that are affected. Bit 6 in conjunction with the lower three bits of the Command byte are used to point to the extended features of the device (Agile IO). The command byte is sent only during a write transmission.

Once a new command has been sent, the register that was addressed continues to be accessed by reads until a new command byte has been sent. Upon power-up, hardware reset, or software reset, the control register defaults to 00h.

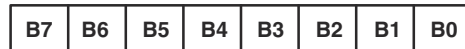


Figure 8-7. Control Register Bits

Table 8-3. Command Byte

| CONTROL REGISTER BITS | | | | | | | | COMMAND BYTE (HEX) | REGISTER | PROTOCOL | POWER-UP DEFAULT |
|-----------------------|----|----|----|----|----|----|----|-----------------------|--|-----------------|---------------------|
| B7 | B6 | B5 | B4 | B3 | B2 | B1 | B0 | | | | |
| 0 | 0 | 0 | 0 | 0 | 0 | 0 | 0 | 00 | Input Port 0 | Read byte | xxxx xxxx |
| 0 | 0 | 0 | 0 | 0 | 0 | 0 | 1 | 01 | Input Port 1 | Read byte | xxxx xxxx |
| 0 | 0 | 0 | 0 | 0 | 0 | 1 | 0 | 02 | Output Port 0 | Read/write byte | 1111 1111 |
| 0 | 0 | 0 | 0 | 0 | 0 | 1 | 1 | 03 | Output Port 1 | Read/write byte | 1111 1111 |
| 0 | 0 | 0 | 0 | 0 | 1 | 0 | 0 | 04 | Polarity Inversion 0 | Read/write byte | 0000 0000 |
| 0 | 0 | 0 | 0 | 0 | 1 | 0 | 1 | 05 | Polarity Inversion 1 | Read/write byte | 0000 0000 |
| 0 | 0 | 0 | 0 | 0 | 1 | 1 | 0 | 06 | Configuration 0 | Read/write byte | 1111 1111 |
| 0 | 0 | 0 | 0 | 0 | 1 | 1 | 1 | 07 | Configuration 1 | Read/write byte | 1111 1111 |
| 0 | 1 | 0 | 0 | 0 | 0 | 0 | 0 | 40 | Output Drive Strength 0 | Read/write byte | 1111 1111 |
| 0 | 1 | 0 | 0 | 0 | 0 | 0 | 1 | 41 | Output Drive Strength 0 | Read/write byte | 1111 1111 |
| 0 | 1 | 0 | 0 | 0 | 0 | 1 | 0 | 42 | Output Drive Strength 1 | Read/write byte | 1111 1111 |
| 0 | 1 | 0 | 0 | 0 | 0 | 1 | 1 | 43 | Output drive strength register 1 | Read/write byte | 1111 1111 |
| 0 | 1 | 0 | 0 | 0 | 1 | 0 | 0 | 44 | Input latch register 0 | Read/write byte | 0000 0000 |
| 0 | 1 | 0 | 0 | 0 | 1 | 0 | 1 | 45 | Input latch register 1 | Read/write byte | 0000 0000 |
| 0 | 1 | 0 | 0 | 0 | 1 | 1 | 0 | 46 | Pull-up/pull-down enable register 0 | Read/write byte | 0000 0000 |
| 0 | 1 | 0 | 0 | 0 | 1 | 1 | 1 | 47 | pull-up/pull-down enable register 1 | Read/write byte | 0000 0000 |
| 0 | 1 | 0 | 0 | 1 | 0 | 0 | 0 | 48 | pull-up/pull-down selection register 0 | Read/write byte | 1111 1111 |
| 0 | 1 | 0 | 0 | 1 | 0 | 0 | 1 | 49 | pull-up/pull-down selection register 1 | Read/write byte | 1111 1111 |
| 0 | 1 | 0 | 0 | 1 | 0 | 1 | 0 | 4A | Interrupt mask register 0 | Read/write byte | 1111 1111 |
| 0 | 1 | 0 | 0 | 1 | 0 | 1 | 1 | 4B | Interrupt mask register 1 | Read/write byte | 1111 1111 |
| 0 | 1 | 0 | 0 | 1 | 1 | 0 | 0 | 4C | Interrupt status register 0 | Read byte | 0000 0000 |
| 0 | 1 | 0 | 0 | 1 | 1 | 0 | 1 | 4D | Interrupt status register 1 | Read byte | 0000 0000 |
| 0 | 1 | 0 | 0 | 1 | 1 | 1 | 1 | 4F | Output port configuration register | Read/write byte | 0000 0000 |

8.6.3 Register Descriptions

The Input Port registers (registers 0 and 1) reflect the incoming logic levels of the pins, regardless of whether the pin is defined as an input or an output by the Configuration register. The input port registers are read only. Writes to these registers have no effect. The default value (X) is determined by the externally applied logic level. Before a read operation, a write transmission is sent with the command byte to indicate to the I²C device that the Input Port register will be accessed next.

Table 8-4. Registers 0 and 1 (Input Port Registers)

| BIT | I-07 | I-06 | I-05 | I-04 | I-03 | I-02 | I-01 | I-00 |
|---------|------|------|------|------|------|------|------|------|
| DEFAULT | X | X | X | X | X | X | X | X |
| BIT | I-17 | I-16 | I-15 | I-14 | I-13 | I-12 | I-11 | I-10 |
| DEFAULT | X | X | X | X | X | X | X | X |

The Output Port registers (registers 2 and 3) shows the outgoing logic levels of the pins defined as outputs by the Configuration register. Bit values in these registers have no effect on pins defined as inputs. In turn, reads from these registers reflect the value that is in the flip-flop controlling the output selection, not the actual pin value.

Table 8-5. Registers 2 and 3 (Output Port Registers)

| BIT | O-07 | O-06 | O-05 | O-04 | O-03 | O-02 | O-01 | O-00 |
|---------|------|------|------|------|------|------|------|------|
| DEFAULT | 1 | 1 | 1 | 1 | 1 | 1 | 1 | 1 |
| BIT | O-17 | O-16 | O-15 | O-14 | O-13 | O-12 | O-11 | O-10 |
| DEFAULT | 1 | 1 | 1 | 1 | 1 | 1 | 1 | 1 |

The Polarity Inversion registers (register 4 and 5) allow polarity inversion of pins defined as inputs by the Configuration register. If a bit in these registers is set (written with 1), the corresponding port pin polarity is inverted. If a bit in these registers is cleared (written with a 0), the corresponding port pin's original polarity is retained.

Table 8-6. Registers 4 and 5 (Polarity Inversion Registers)

| BIT | P-07 | P-06 | P-05 | P-04 | P-03 | P-02 | P-01 | P-00 |
|---------|------|------|------|------|------|------|------|------|
| DEFAULT | 0 | 0 | 0 | 0 | 0 | 0 | 0 | 0 |
| BIT | P-17 | P-16 | P-15 | P-14 | P-13 | P-12 | P-11 | P-10 |
| DEFAULT | 0 | 0 | 0 | 0 | 0 | 0 | 0 | 0 |

The Configuration registers (registers 6 and 7) configure the direction of the I/O pins. If a bit in these registers is set to 1, the corresponding port pin is enabled as an input with a high-impedance output driver. If a bit in these registers is cleared to 0, the corresponding port pin is enabled as an output. Changing a port from an input to an output configuration will cause any interrupt associated with that port to be cleared.

Table 8-7. Registers 6 and 7 (Configuration Registers)

| BIT | C-07 | C-06 | C-05 | C-04 | C-03 | C-02 | C-01 | C-00 |
|---------|------|------|------|------|------|------|------|------|
| DEFAULT | 1 | 1 | 1 | 1 | 1 | 1 | 1 | 1 |
| BIT | C-17 | C-16 | C-15 | C-14 | C-13 | C-12 | C-11 | C-10 |
| DEFAULT | 1 | 1 | 1 | 1 | 1 | 1 | 1 | 1 |

The output drive strength registers control the output drive level of the P port GPIO buffers. Each GPIO can be configured independently to the desired output current level by two register control bits. For example, Port P07 is controlled by register 41 (bits 7 and 6), port P06 is controlled by register 41 (bits 5 and 4), etc. The output drive level of the GPIO is programmed 00b = 0.25x drive strength, 01b = 0.5x drive strength, 10b = 0.75x drive strength, or 11b = 1x for full drive strength capability. See Section 9.2 for more details.

Table 8-8. Registers 40, 41, 42, and 43 (Output Drive Strength Registers)

| BIT | CC-03 | CC-03 | CC-02 | CC-02 | CC-01 | CC-01 | CC-00 | CC-00 |
|---------|-------|-------|-------|-------|-------|-------|-------|-------|
| DEFAULT | 1 | 1 | 1 | 1 | 1 | 1 | 1 | 1 |
| BIT | CC-07 | CC-07 | CC-06 | CC-06 | CC-05 | CC-05 | CC-04 | CC-04 |
| DEFAULT | 1 | 1 | 1 | 1 | 1 | 1 | 1 | 1 |
| BIT | CC-13 | CC-13 | CC-12 | CC-12 | CC-11 | CC-11 | CC-10 | CC-10 |
| DEFAULT | 1 | 1 | 1 | 1 | 1 | 1 | 1 | 1 |
| BIT | CC-17 | CC-17 | CC-16 | CC-16 | CC-15 | CC-14 | CC-14 | CC-14 |
| DEFAULT | 1 | 1 | 1 | 1 | 1 | 1 | 1 | 1 |

The input latch registers enable and disable the input latch feature of the P port GPIO pins. These registers are effective only when the pin is configured as an input port. When an input latch register bit is 0, the corresponding input pin state is not latched. A state change in the corresponding input pin generates an input. A read of the input register clears the interrupt. If the input goes back to its initial logic state before the input port register is read, then the interrupt is cleared.

When an input latch register bit is set to 1, the corresponding input pin state is latched. A change of state of the input generates an interrupt and the input logic value is loaded into the corresponding bit of the input port register (registers 0 and 1). A read of the input port register clears the interrupt. However, if the input pin returns to its initial logic state before the input port register is read, then the interrupt is not cleared and the corresponding bit of the input port register keeps the logic value that initiated the interrupt. See Figure 16.

For example, if the P04 input was at a logic 0 state and then transitions to a logic 1 state followed by going back to the logic 0 state, the input port 0 register will capture this change and an interrupt will be generated (if unmasked). When the read is performed on the input port 0 register, the interrupt is cleared, assuming there were no additional inputs that have changed, and bit 4 of the input port 0 register will read '1'. The next read of the input port register bit 4 should now read '0'.

An interrupt remains active when a non-latched input simultaneously switches state with a latched input and then returns to its original state. A read of the input register reflects only the change of state of the latched input and also clears the interrupt. If the input latch register changes from a latched to a non-latched configuration, the interrupt will be cleared if the input logic value returns to its original state.

If the input pin is changed from a latched to a non-latched input, a read from the input port register reflects the current port logic level. If the input pin is changed from a non-latched to a latched input, the read from the input register reflects the latched logic level.

Table 8-9. Registers 44 and 45 (Input Latch Registers)

| BIT | L-07 | L-06 | L-05 | L-04 | L-03 | L-02 | L-01 | L-00 |
|---------|------|------|------|------|------|------|------|------|
| DEFAULT | 0 | 0 | 0 | 0 | 0 | 0 | 0 | 0 |
| BIT | L-17 | L-16 | L-15 | L-14 | L-13 | L-12 | L-11 | L-10 |
| DEFAULT | 0 | 0 | 0 | 0 | 0 | 0 | 0 | 0 |

The pull-up/pull-down enable registers allow the user to enable or disable pull-up/pull-down resistors on the GPIO pins. Setting the bit to logic 1 enables the selection of pull-up/pull-down resistors. Setting the bit to logic 0 disconnects the pull-up/pull-down resistors from the GPIO pins. The resistors will be disabled when the GPIO pins are configured as outputs. See section 7.4.11. Use the pull-up/pull-down selection registers to select either a pull-up or pull-down resistor.

Table 8-10. Registers 46 and 47 (Pull-Up/Pull-Down Enable Registers)

| BIT | PE-07 | PE-06 | PE-05 | PE-04 | PE-03 | PE-02 | PE-01 | PE-00 |
|---------|-------|-------|-------|-------|-------|-------|-------|-------|
| DEFAULT | 0 | 0 | 0 | 0 | 0 | 0 | 0 | 0 |
| BIT | PE-17 | PE-16 | PE-15 | PE-14 | PE-13 | PE-12 | PE-11 | PE-10 |

Table 8-10. Registers 46 and 47 (Pull-Up/Pull-Down Enable Registers)
(continued)

| BIT | PE-07 | PE-06 | PE-05 | PE-04 | PE-03 | PE-02 | PE-01 | PE-00 |
|---------|-------|-------|-------|-------|-------|-------|-------|-------|
| DEFAULT | 0 | 0 | 0 | 0 | 0 | 0 | 0 | 0 |

The pull-up/pull-down selection registers allow the user to configure each GPIO to have a pull-up or pull-down resistor by programming the respective register bit. Setting a bit to a logic 1 selects a 100 kΩ pull-up resistor for that GPIO pin. Setting a bit to logic 0 selects a 100 kΩ pull-down resistor for that GPIO pin. If the pull-up/pull-down feature is disabled via registers 46 and 47, writing to these registers will have no effect on the GPIO pin.

Table 8-11. Registers 48 and 49 (Pull-Up/Pull-Down Selection Registers)

| BIT | PUD-07 | PUD-06 | PUD-05 | PUD-04 | PUD-03 | PUD-02 | PUD-01 | PUD-00 |
|---------|--------|--------|--------|--------|--------|--------|--------|--------|
| DEFAULT | 1 | 1 | 1 | 1 | 1 | 1 | 1 | 1 |
| BIT | PUD-17 | PUD-16 | PUD-15 | PUD-14 | PUD-13 | PUD-12 | PUD-11 | PUD-10 |
| DEFAULT | 1 | 1 | 1 | 1 | 1 | 1 | 1 | 1 |

The Interrupt mask registers are defaulted to logic 1 upon power-on, disabling interrupts during system start-up. Interrupts may be enabled by setting corresponding mask bits to logic 0.

If an input changes state and the corresponding bit in the interrupt mask register is set to 1, the interrupt is masked and the interrupt pin is not asserted. If the corresponding bit in the interrupt mask register is set to 0, the interrupt pin will be asserted.

When an input changes state and the resulting interrupt is masked, setting the interrupt mask register bit to 0 causes the interrupt pin to be asserted. If the interrupt mask bit of an input that is already currently the source of an interrupt is set to 1, the interrupt pin will be de-asserted.

Table 8-12. Registers 4A and 4B (Interrupt Mask Registers)

| BIT | M-07 | M-06 | M-05 | M-04 | M-03 | M-02 | M-01 | M-00 |
|---------|------|------|------|------|------|------|------|------|
| DEFAULT | 1 | 1 | 1 | 1 | 1 | 1 | 1 | 1 |
| BIT | M-17 | M-16 | M-15 | M-14 | M-13 | M-12 | M-11 | M-10 |
| DEFAULT | 1 | 1 | 1 | 1 | 1 | 1 | 1 | 1 |

The Interrupt status registers are read only registers used to identify the source of an interrupt. When read, a logic 1 indicates that the corresponding input pin was the source of the interrupt. A logic 0 indicates that the input pin is not the source of an interrupt. When a corresponding bit in the interrupt mask register is set to 1 (masked), the interrupt status bit will return to logic 0.

Table 8-13. Registers 4C and 4D (Interrupt Status Registers)

| BIT | S-07 | S-06 | S-05 | S-04 | S-03 | S-02 | S-01 | S-00 |
|---------|------|------|------|------|------|------|------|------|
| DEFAULT | 0 | 0 | 0 | 0 | 0 | 0 | 0 | 0 |
| BIT | S-17 | S-16 | S-15 | S-14 | S-13 | S-12 | S-11 | S-10 |
| DEFAULT | 0 | 0 | 0 | 0 | 0 | 0 | 0 | 0 |

The output port configuration register selects port-wise push-pull or open-drain I/O stage. A logic 0 configures the I/O as push-pull (Q1 and Q2 are active, see Figure 8-2). A logic 1 configures the I/O as open-drain (Q1 is disabled, Q2 is active) and the recommended command sequence is to program this register (4F) before the Configuration register (06 and 07) sets the port pins as outputs.

ODEN0 configures Port 0X and ODEN1 configures Port 1X.

Table 8-14. Register 4F (Output Port Configuration Register)

| BIT | Reserved | | | | | | ODEN-1 | ODEN-0 |
|---------|----------|---|---|---|---|---|--------|--------|
| DEFAULT | 0 | 0 | 0 | 0 | 0 | 0 | 0 | 0 |

8.6.4 Bus Transactions

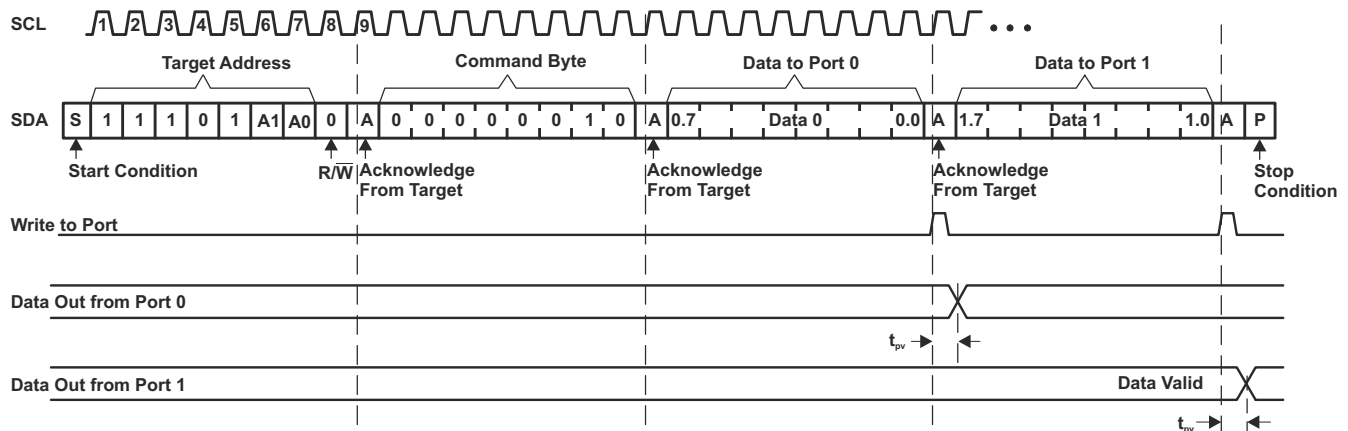
Data is exchanged between the controller and TCAL9539 through write and read commands.

8.6.4.1 Writes

Data is transmitted to the TCAL9539 by sending the device address and setting the least-significant bit (LSB) to a logic 0 (see Figure 8-6 for device address). The command byte is sent after the address and determines which register receives the data that follows the command byte. There is no limitation on the number of data bytes sent in one write transmission.

Twenty-two registers within the TCAL9539 are configured to operate as eleven register pairs. The eleven pairs are input port, output port, polarity inversion, configuration, output drive strength (two 16-bit registers), input latch, pull-up/pull-down enable, pull-up/pulldown selection, interrupt mask, and interrupt status registers. After sending data to one register, the next data byte is sent to the other register in the pair (see Figure 8-8 and Figure 8-9). For example, if the first byte is sent to Output Port 1 (register 3), the next byte is stored in Output Port 0 (register 2).

There is no limitation on the number of data bytes sent in one write transmission. In this way, each 8-bit register pair may be updated independently of the other registers.

**Figure 8-8. Write to Output Port Register**

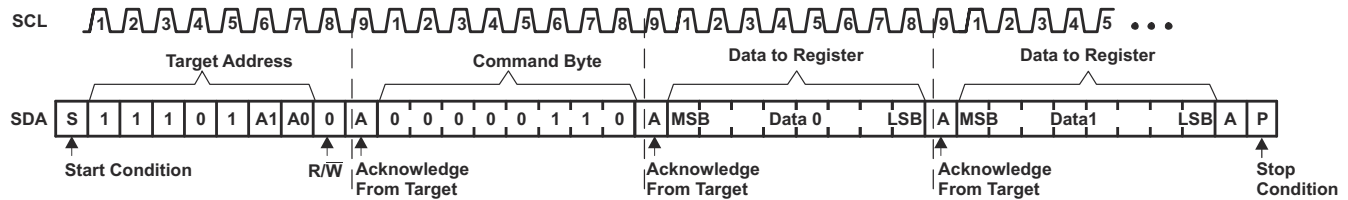


Figure 8-9. Write to Configuration or Polarity Inversion Registers

8.6.4.2 Reads

The bus controller first must send the TCAL9539 address with the LSB set to a logic 0 (see Figure 8-6 for device address). The command byte is sent after the address and determines which register is accessed.

After a restart, the device address is sent again, but this time the least significant bit is set to a logic 1. Data from the register defined by the command byte is sent by the TCAL9539 (see Figure 8-10 and Figure 8-11). Data is clocked into the register on the rising edge of the ACK clock pulse. After the first byte is read, additional bytes may be read, but the data now reflects the information in the other register in the pair. For example, if Input Port 1 is read, the next byte read is Input Port 0. There is no limit on the number of data bytes received in one read transmission, but on the final byte received the bus master must not acknowledge the data. After a subsequent restart, the command byte contains the value of the next register to be read in the pair. For example, if Input Port 1 was read last before the restart, the register that is read after the restart is the Input Port 0.

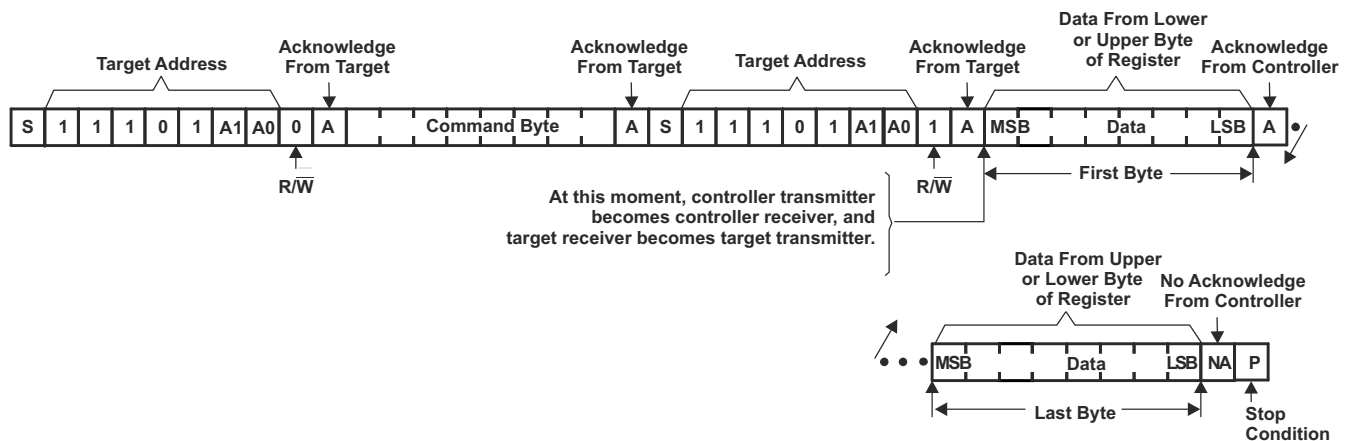
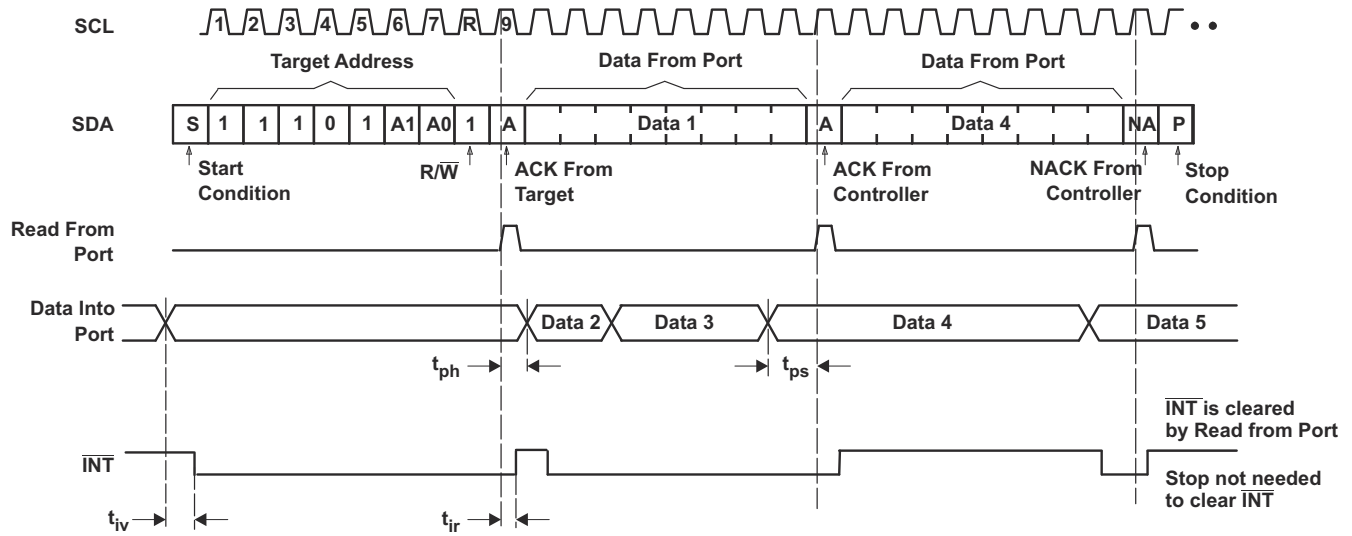


Figure 8-10. Read From Register



- Transfer of data can be stopped at any time by a Stop condition. When this occurs, data present at the latest acknowledge phase is valid (output mode). It is assumed that the command byte previously has been set to 00 (read Input Port register).
- This figure eliminates the command byte transfer, a restart, and responder address call between the initial responder address call and actual data transfer from P port (see [Figure 8-10](#)).

Figure 8-11. Read Input Port Register

9 Application and Implementation

Note

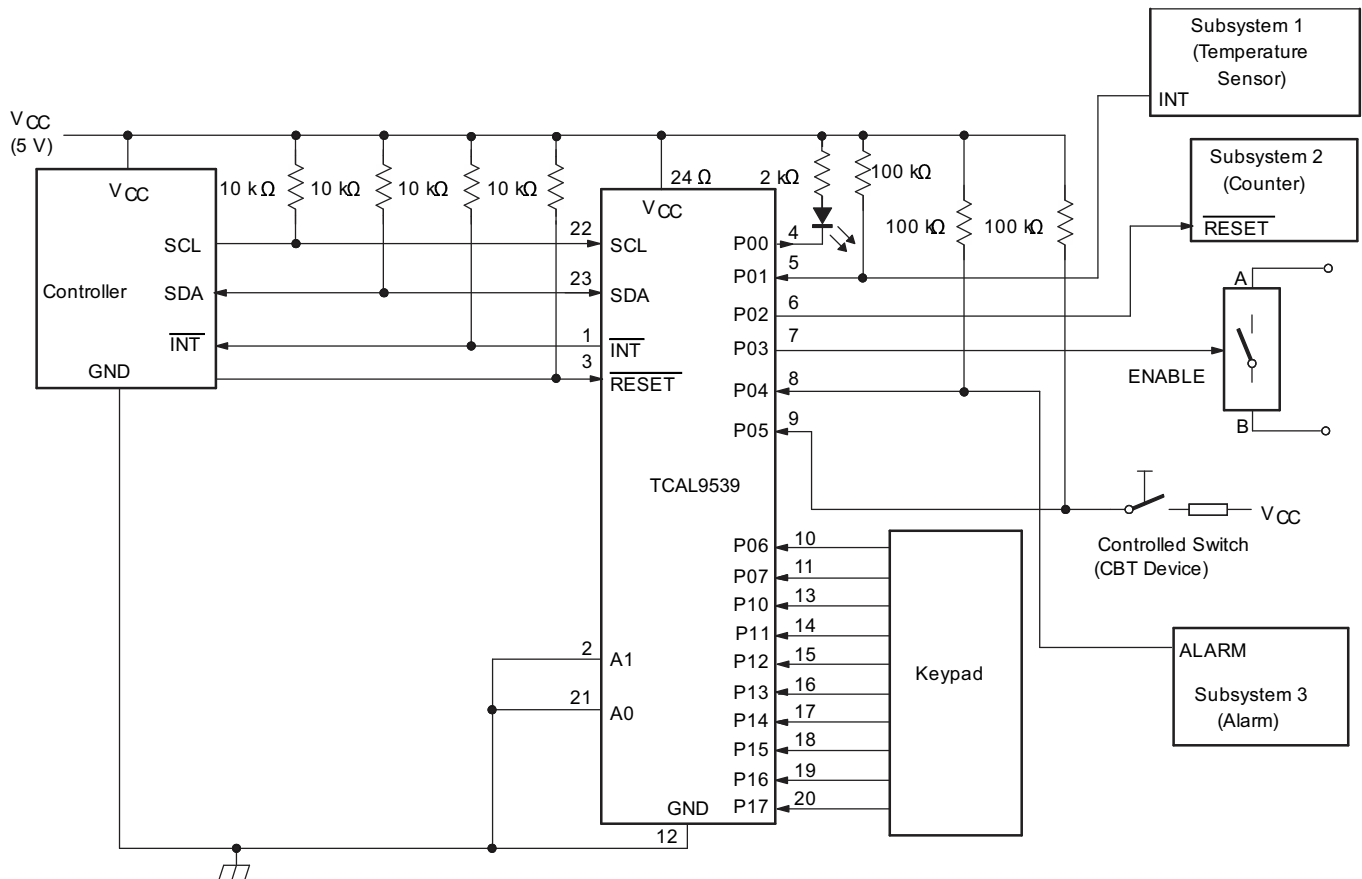
Information in the following applications sections is not part of the TI component specification, and TI does not warrant its accuracy or completeness. TI's customers are responsible for determining suitability of components for their purposes. Customers should validate and test their design implementation to confirm system functionality.

9.1 Application Information

Applications of the TCAL9539 use this device connected as a responder to an I2C controller (processor), and the I2C bus may contain any number of other responder devices. The TCAL9539 is in a remote location from the controller, placed close to the GPIOs to which the controller needs to monitor or control.

9.2 Typical Application

Figure 9-1 shows an application in which the TCAL9539 can be used.



- Device address configured as 1110000 for this example.
- P00, P02, and P03 are configured as outputs.
- P01 and P04 to P017 are configured as inputs.
- Resistors are required for inputs (on P port) that may float. If a driver to an input will never let the input float, a resistor is not needed. Outputs (in the P port) do not need pullup resistors.

Figure 9-1. Typical Application Schematic

9.2.1 Design Requirements

Table 9-1. Design Parameters

| DESIGN PARAMETER | EXAMPLE VALUE |
|---|---------------|
| Supply Voltage (V_{CC}) | 1.8 V |
| Output current rating, P-port sinking (I_{OL}) | 25 mA |
| Output current rating, P-port sourcing (I_{OH}) | 10 mA |
| I ² C bus clock (SCL) speed | 1 MHz |

9.2.2 Detailed Design Procedure

The pull-up resistors, R_P , for the SCL and SDA lines need to be selected appropriately and take into consideration the total capacitance of all responders on the I²C bus. The minimum pull-up resistance is a function of V_{CC} , $V_{OL(max)}$, and I_{OL} :

$$R_{p(min)} = \frac{V_{CC} - V_{OL(max)}}{I_{OL}} \quad (1)$$

The maximum pull-up resistance is a function of the maximum rise time, t_r (120 ns for fast-mode-plus operation, $f_{SCL} = 1$ MHz) and bus capacitance, C_b :

$$R_{p(max)} = \frac{t_r}{0.8473 \times C_b} \quad (2)$$

The maximum bus capacitance for an I²C bus must not exceed 400 pF for standard-mode or fast-mode operation, or 550pF for fast-mode-plus. The bus capacitance can be approximated by adding the capacitance of the TCAL9539, C_i for SCL or C_{iO} for SDA, the capacitance of wires/connections/traces, and the capacitance of additional responders on the bus.

9.2.2.1 Minimizing I_{CC} When I/Os Control LEDs

When the I/Os are used to control LEDs, normally they are connected to V through a resistor as shown in [Figure 9-2](#). For a P-port configured as an input, current consumption increases as V_I becomes lower than V. The LED is a diode, with threshold voltage V_T , and when a P-port is configured as an input the LED are off, but V_I is a V_T drop below V_{CC} .

For battery-powered applications, it is essential that the voltage of P-ports controlling LEDs is greater than or equal to V when the P-ports are configured as input to minimize current consumption. [Figure 9-2](#) shows a high-value resistor in parallel with the LED. [Figure 9-3](#) shows V less than the LED supply voltage by at least V_T . Both of these methods maintain the I/O V_I at or above V and prevent additional supply current consumption when the P-port is configured as an input and the LED is off.

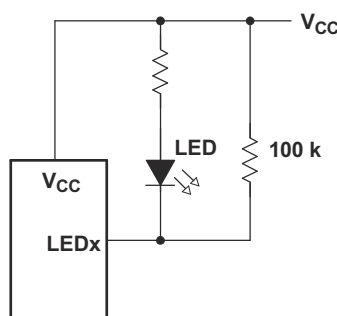


Figure 9-2. High-Value Resistor in Parallel with LED

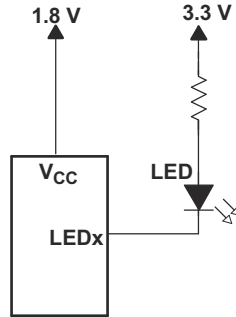
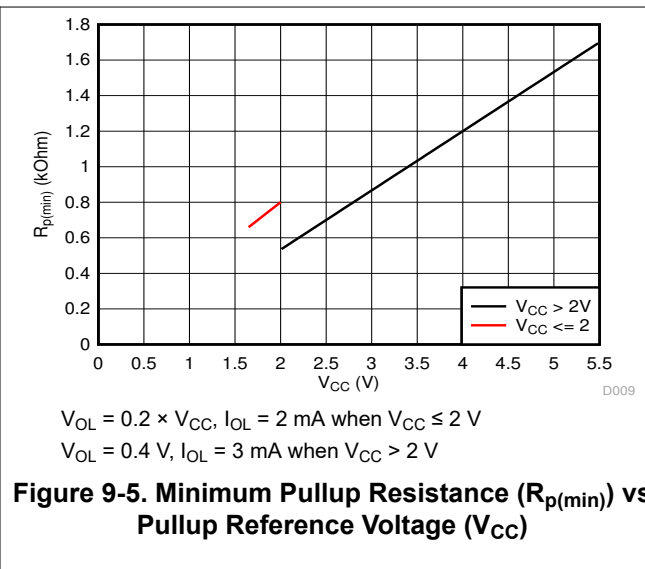
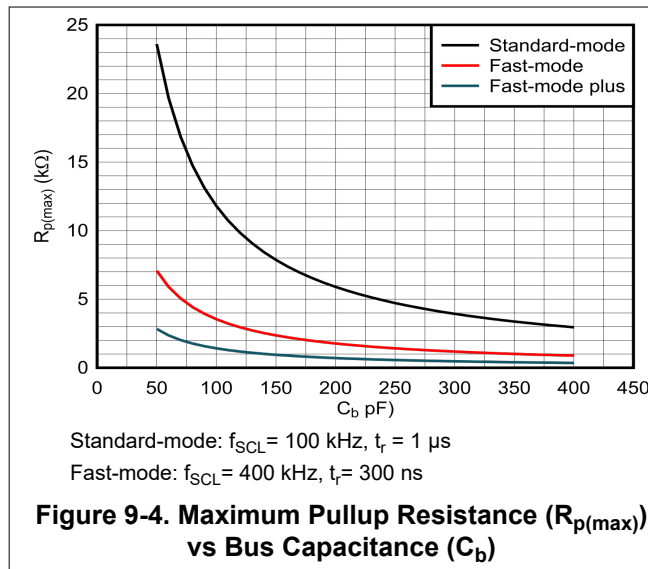


Figure 9-3. Device Supplied by a Lower Voltage

9.2.3 Application Curves



9.3 Power Supply Recommendations

9.3.1 Power-On Reset Requirements

In the event of a glitch or data corruption, TCAL9539 can be reset to its default conditions by using the power-on reset feature. Power-on reset requires that the device go through a power cycle to be completely reset. This reset also happens when the device is powered on for the first time in an application.

The two types of power-on reset are shown in [Figure 9-6](#) and [Figure 9-7](#).

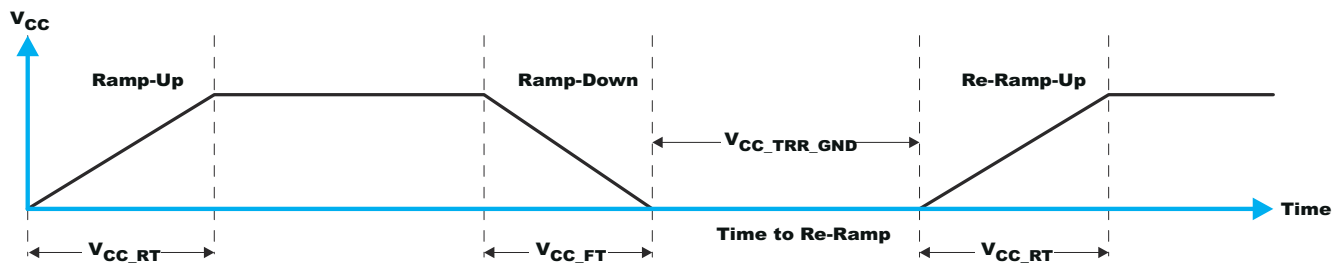


Figure 9-6. V is lowered below 0.2 V or 0 V and then ramped up

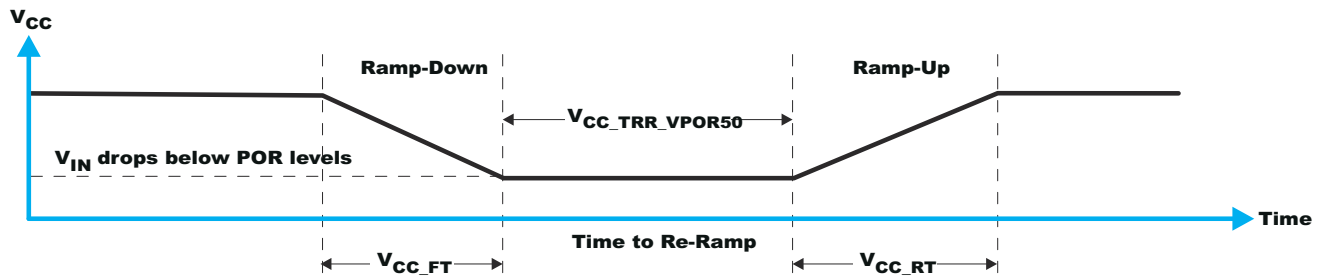


Figure 9-7. V is lowered below the POR threshold, then ramped back up

Table 9-2 specifies the performance of the power-on reset feature for TCAL9539 for both types of power-on reset.

Table 9-2. Recommended Supply Sequencing and Ramp Rates

| PARAMETER ^{(1) (2)} | | | MIN | TYP | MAX | UNIT |
|------------------------------|--|----------------|-----|-----|------|------|
| t _{FT} | Fall rate | See Figure 9-6 | 0.1 | | 2000 | ms |
| t _{RT} | Rise rate | See Figure 9-6 | 0.1 | | 2000 | ms |
| t _{TRR_GND} | Time to re-ramp (when V _{CC} drops to GND) | See Figure 9-6 | 1 | | | μs |
| t _{TRR_POR50} | Time to re-ramp (when V _{CC} drops to V _{POR_MIN} – 50 mV) | See Figure 9-7 | 1 | | | μs |
| V _{CC_GH} | Level that V can glitch down to, but not cause a functional disruption when V = 1 μs | See Figure 9-8 | | | 1.0 | V |
| t _{GW} | Glitch width that will not cause a functional disruption when V = 0.5 × V _{CCx} | See Figure 9-8 | | | 10 | μs |
| V _{PORF} | Voltage trip point of POR on falling V _{CC} | | 0.6 | | | V |
| V _{PORR} | Voltage trip point of POR on rising V _{CC} | | | | 1.0 | V |

(1) T_A = 25°C (unless otherwise noted).

(2) Not tested. Specified by design.

Glitches in the power supply can also affect the power-on reset performance of this device. The glitch width (V_{CC_GW}) and height (V_{CC_GH}) are dependent on each other. The bypass capacitance, source impedance, and device impedance are factors that affect power-on reset performance. Figure 9-8 and Table 9-2 provide more information on how to measure these specifications.

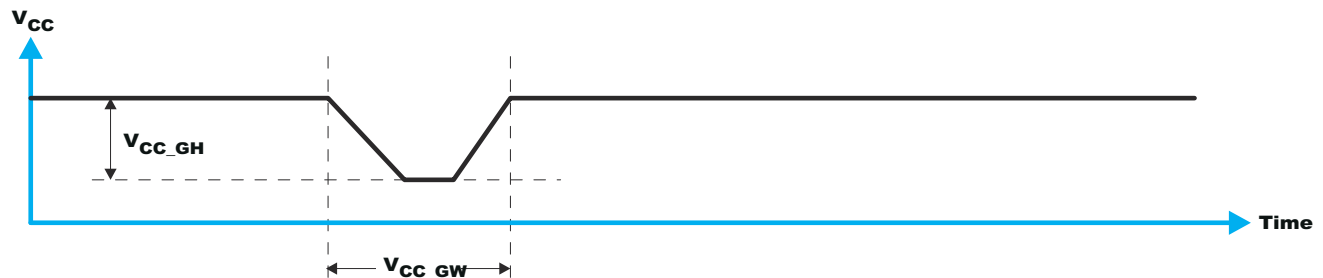


Figure 9-8. Glitch Width and Glitch Height

V_{POR} is critical to the power-on reset. V_{POR} is the voltage level at which the reset condition is released and all the registers and the I²C/SMBus state machine are initialized to their default states. The value of V_{POR} differs based on the V being lowered to or from 0. Figure 9-9 and Table 9-2 provide more details on this specification.

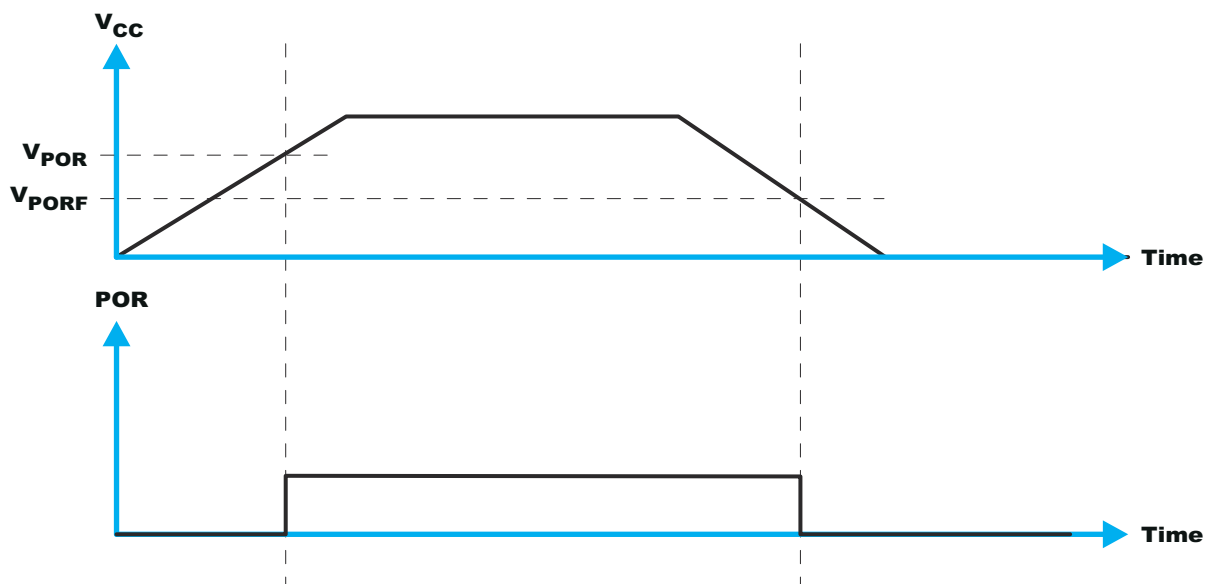


Figure 9-9. V_{POR}

9.4 Layout

9.4.1 Layout Guidelines

For printed circuit board (PCB) layout of the TCAL9539, common PCB layout practices should be followed but additional concerns related to high-speed data transfer such as matched impedance and differential pairs are not a concern for I²C signal speeds.

In all PCB layouts, it is a best practice to avoid right angles in signal traces, to fan out signal traces away from each other upon leaving the vicinity of an integrated circuit (IC), and to use thicker trace widths to carry higher amounts of current that commonly pass through power and ground traces. By-pass and decoupling capacitors are commonly used to control the voltage on the supply pins, using a larger capacitor to provide additional power in the event of a short power supply glitch and a smaller capacitor to filter out high-frequency ripple. These capacitors should be placed as close to the TCAL9539 as possible. These best practices are shown in [Figure 9-10](#).

For the layout example provided in [Figure 9-10](#), it is possible to fabricate a PCB with only 2 layers by using the top layer for signal routing and the bottom layer as a split plane for power and ground (GND). However, a 4 layer board is preferable for boards with higher density signal routing. On a 4 layer PCB, it is common to route signals on the top and bottom layer, dedicate one internal layer to a ground plane, and dedicate the other internal layer to a power plane. In a board layout using planes or split planes for power and ground, vias are placed directly next to the surface mount component pad which needs to attach to power or GND and the via is connected electrically to the internal layer or the other side of the board. Vias are also used when a signal trace needs to be routed to the opposite side of the board, but this technique is not demonstrated in [Figure 9-10](#).

9.4.2 Layout Example

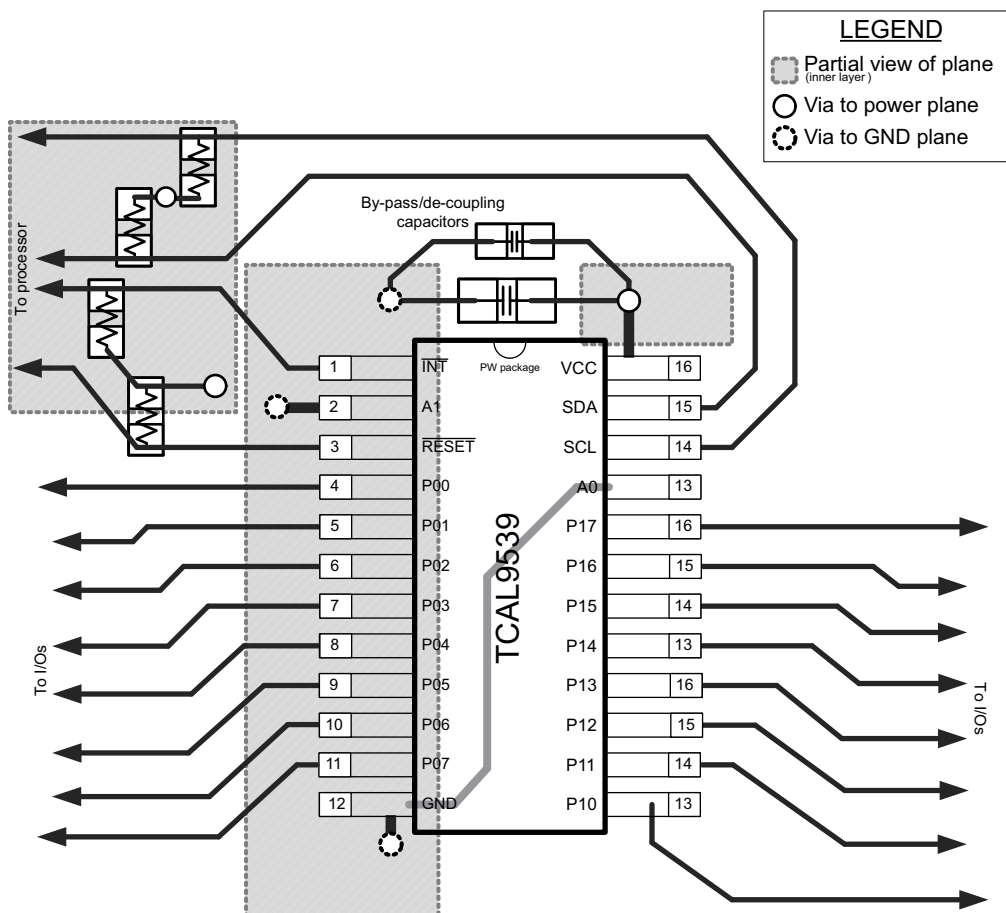


Figure 9-10. TCAL9539 Layout

10 Device and Documentation Support

10.1 Receiving Notification of Documentation Updates

To receive notification of documentation updates, navigate to the device product folder on [ti.com](https://www.ti.com). Click on *Subscribe to updates* to register and receive a weekly digest of any product information that has changed. For change details, review the revision history included in any revised document.

10.2 Support Resources

[TI E2E™ support forums](#) are an engineer's go-to source for fast, verified answers and design help — straight from the experts. Search existing answers or ask your own question to get the quick design help you need.

Linked content is provided "AS IS" by the respective contributors. They do not constitute TI specifications and do not necessarily reflect TI's views; see TI's [Terms of Use](#).

10.3 Trademarks

TI E2E™ is a trademark of Texas Instruments.

All trademarks are the property of their respective owners.

10.4 Electrostatic Discharge Caution



This integrated circuit can be damaged by ESD. Texas Instruments recommends that all integrated circuits be handled with appropriate precautions. Failure to observe proper handling and installation procedures can cause damage.

ESD damage can range from subtle performance degradation to complete device failure. Precision integrated circuits may be more susceptible to damage because very small parametric changes could cause the device not to meet its published specifications.

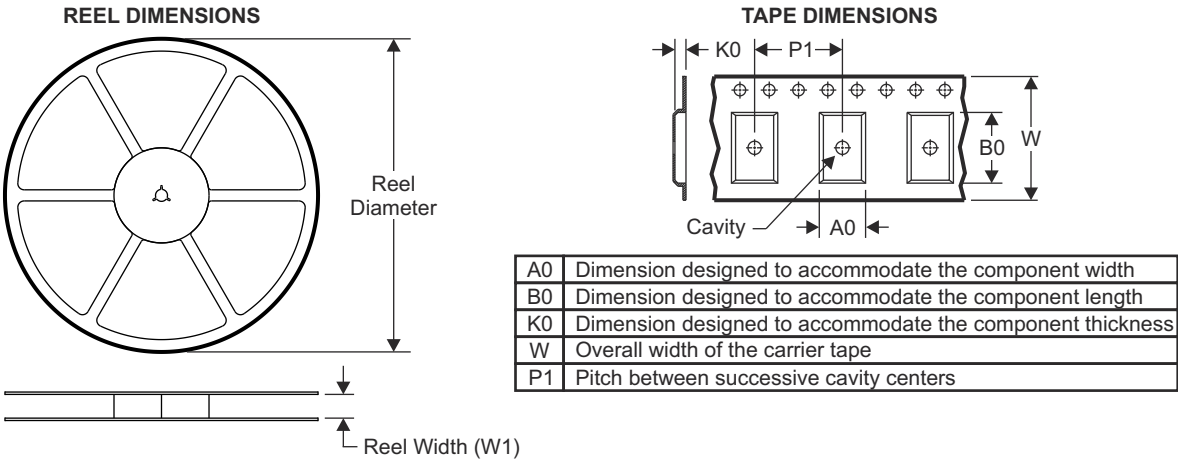
10.5 Glossary

[TI Glossary](#) This glossary lists and explains terms, acronyms, and definitions.

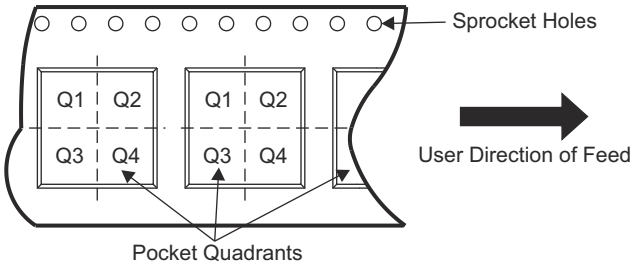
11 Mechanical, Packaging, and Orderable Information

The following pages include mechanical, packaging, and orderable information. This information is the most current data available for the designated devices. This data is subject to change without notice and revision of this document. For browser-based versions of this data sheet, refer to the left-hand navigation.

11.1 Tape and Reel Information

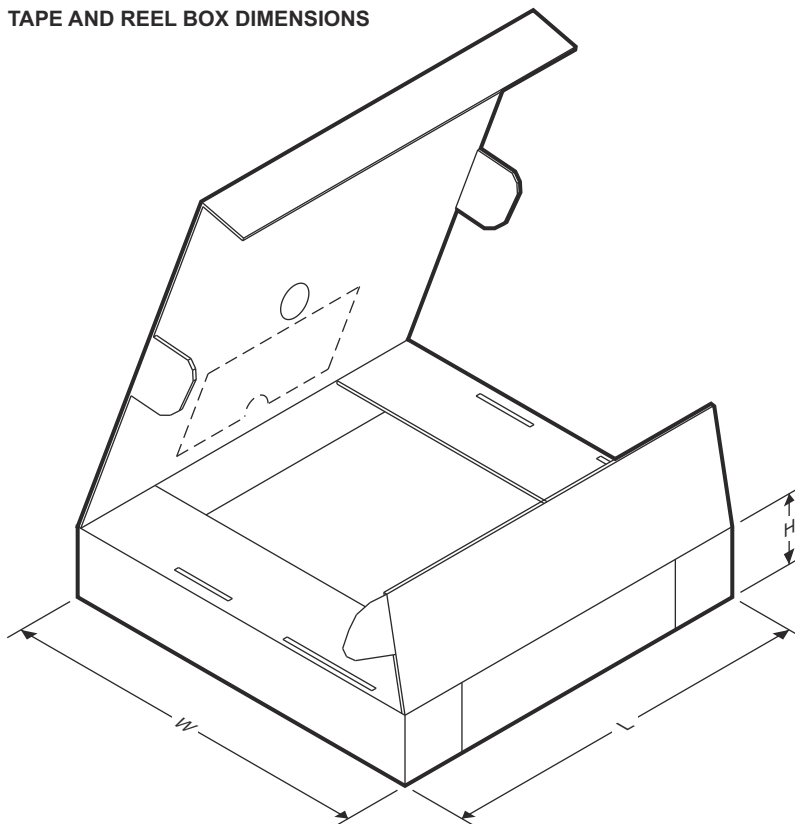


QUADRANT ASSIGNMENTS FOR PIN 1 ORIENTATION IN TAPE



| Device | Package Type | Package Drawing | Pins | SPQ | Reel Diameter (mm) | Reel Width W1 (mm) | A0 (mm) | B0 (mm) | K0 (mm) | P1 (mm) | W (mm) | Pin1 Quadrant |
|---------------|--------------|-----------------|------|------|--------------------|--------------------|---------|---------|---------|---------|--------|---------------|
| PTCAL9539PWR | TSSOP | PW | 16 | 2000 | 330.0 | 12.4 | 6.9 | 5.6 | 1.6 | 8.0 | 12.0 | Q1 |
| PTCAL9538RTWR | WQFN | RTW | 24 | 3000 | 330.0 | 12.4 | 4.25 | 4.25 | 1.15 | 8.0 | 12.0 | Q2 |

TAPE AND REEL BOX DIMENSIONS



| Device | Package Type | Package Drawing | Pins | SPQ | Length (mm) | Width (mm) | Height (mm) |
|---------------|--------------|-----------------|------|------|-------------|------------|-------------|
| PTCAL9539PWR | TSSOP | PW | 16 | 2000 | 367.0 | 367.0 | 35.0 |
| PTCAL9538RTWR | WQFN | RTW | 24 | 3000 | 356.0 | 35.0 | 35.0 |

11.2 Mechanical Data

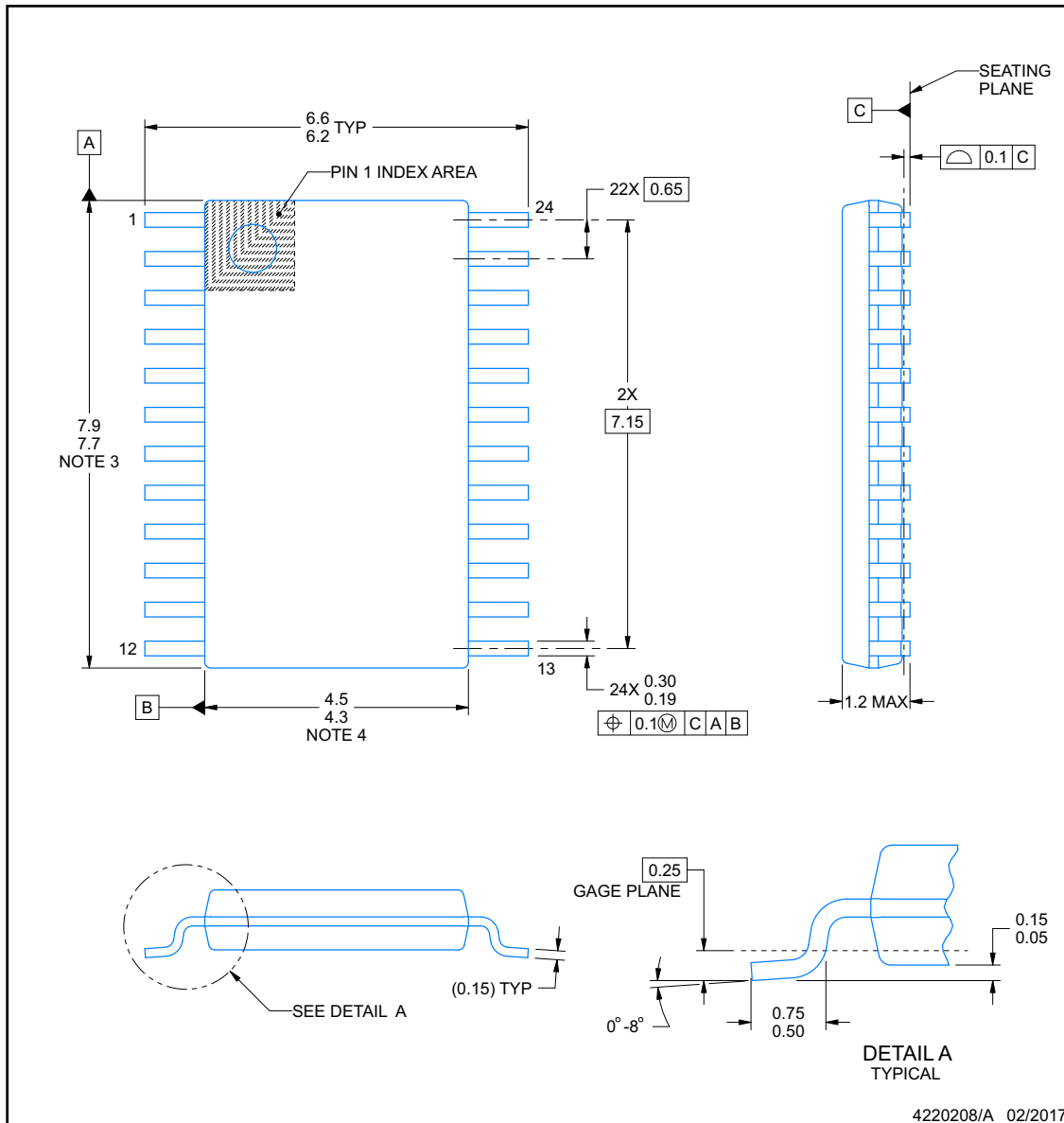


PACKAGE OUTLINE

TSSOP - 1.2 mm max height

SMALL OUTLINE PACKAGE

ADVANCE INFORMATION



NOTES:

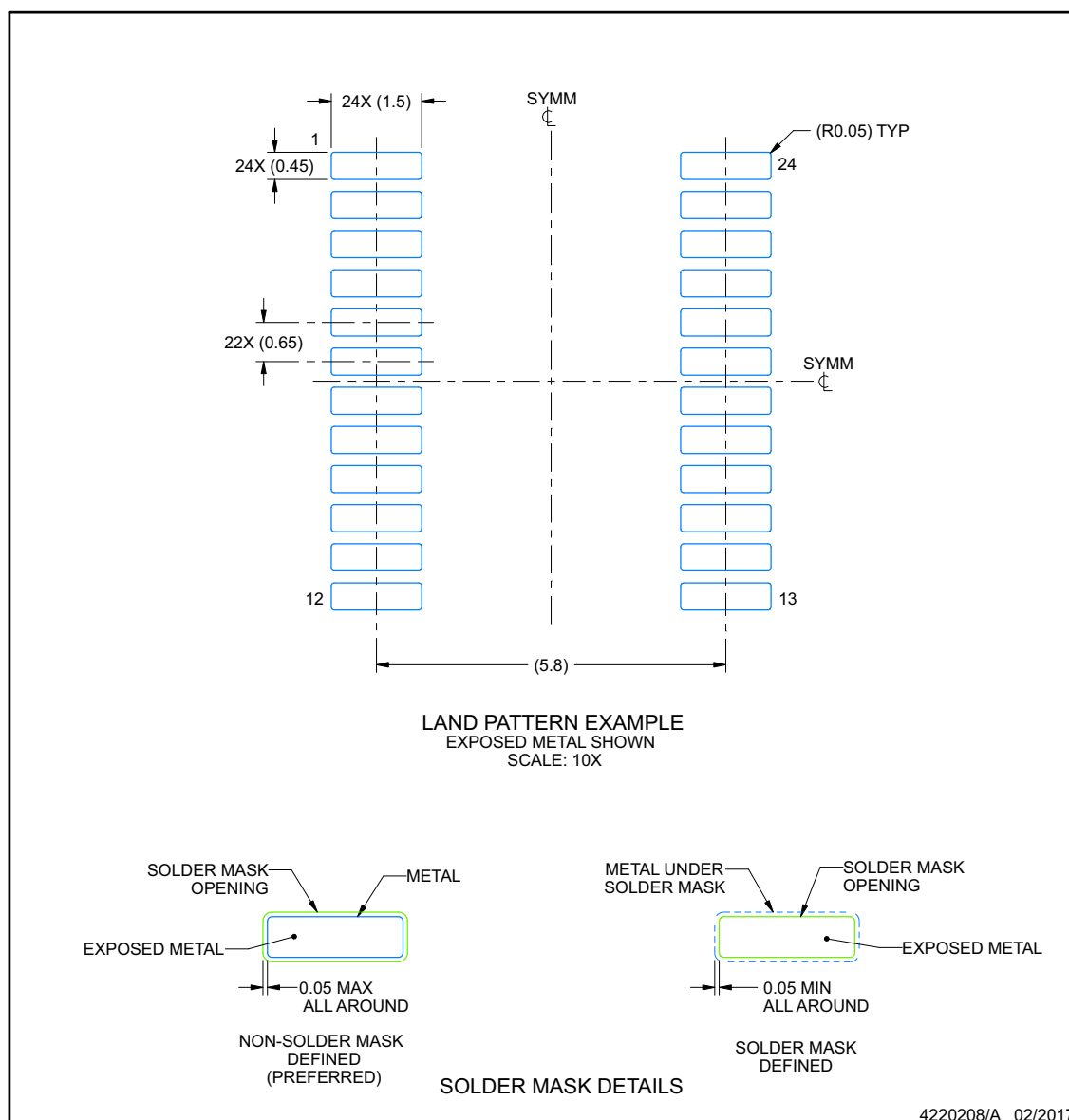
1. All linear dimensions are in millimeters. Any dimensions in parenthesis are for reference only. Dimensioning and tolerancing per ASME Y14.5M.
2. This drawing is subject to change without notice.
3. This dimension does not include mold flash, protrusions, or gate burrs. Mold flash, protrusions, or gate burrs shall not exceed 0.15 mm per side.
4. This dimension does not include interlead flash. Interlead flash shall not exceed 0.25 mm per side.
5. Reference JEDEC registration MO-153.

EXAMPLE BOARD LAYOUT

PW0024A

TSSOP - 1.2 mm max height

SMALL OUTLINE PACKAGE



NOTES: (continued)

6. Publication IPC-7351 may have alternate designs.

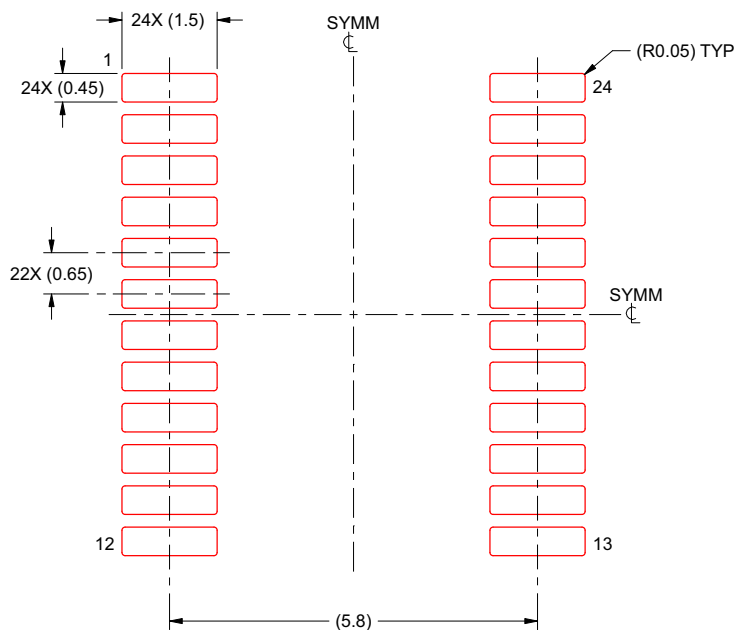
7. Solder mask tolerances between and around signal pads can vary based on board fabrication site.

EXAMPLE STENCIL DESIGN

PW0024A

TSSOP - 1.2 mm max height

SMALL OUTLINE PACKAGE

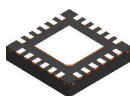


SOLDER PASTE EXAMPLE
BASED ON 0.125 mm THICK STENCIL
SCALE: 10X

4220208/A 02/2017

NOTES: (continued)

8. Laser cutting apertures with trapezoidal walls and rounded corners may offer better paste release. IPC-7525 may have alternate design recommendations.
9. Board assembly site may have different recommendations for stencil design.

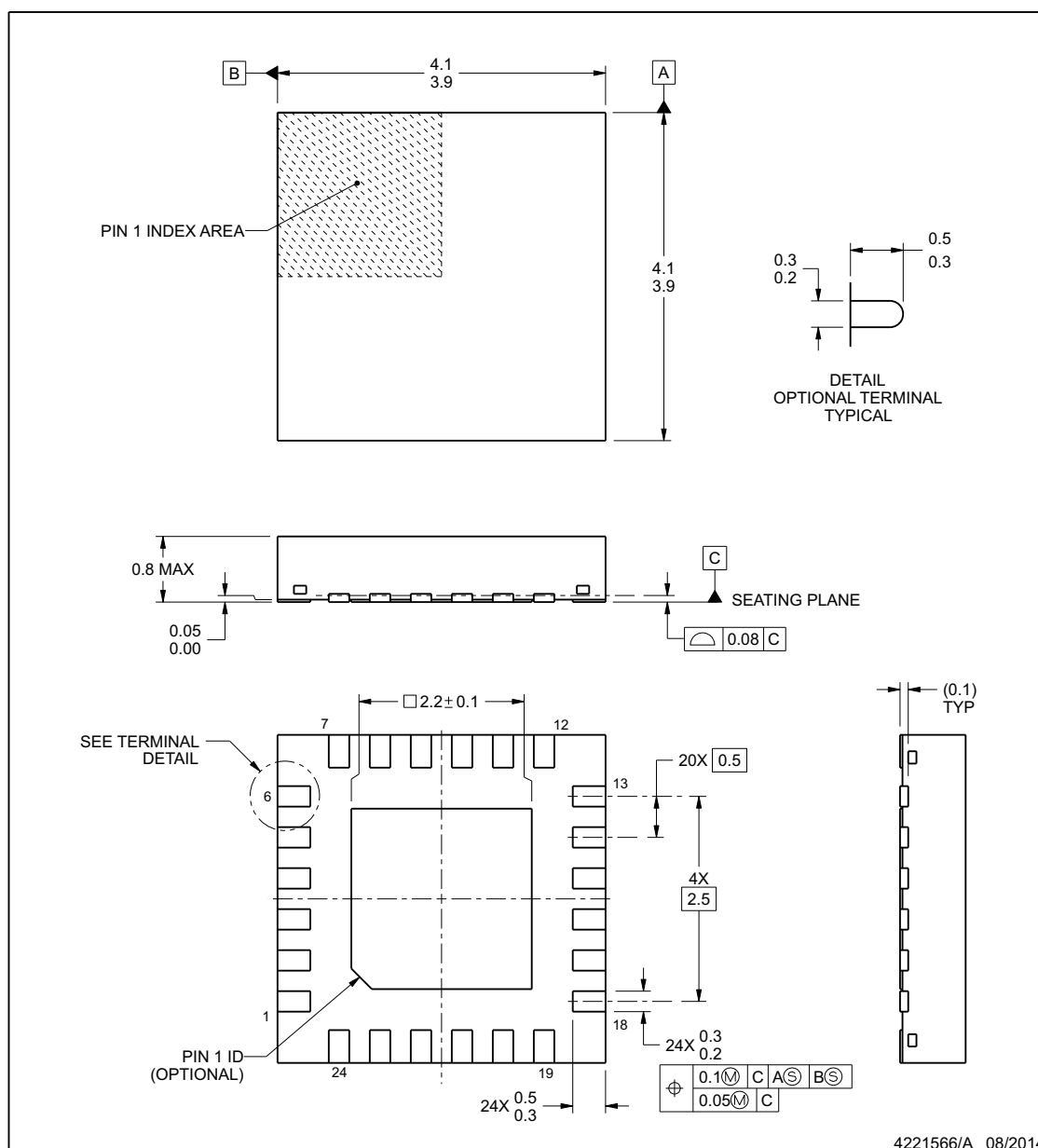


PACKAGE OUTLINE

RTW0024J

WQFN - 0.8 mm max height

PLASTIC QUAD FLATPACK - NO LEAD



NOTES:

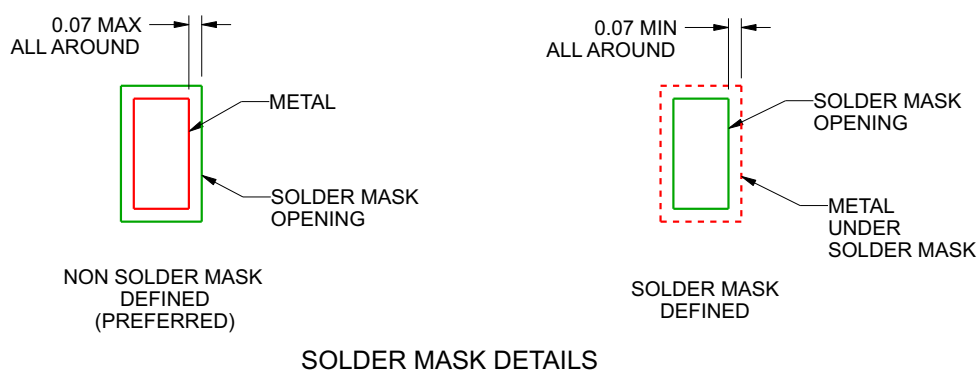
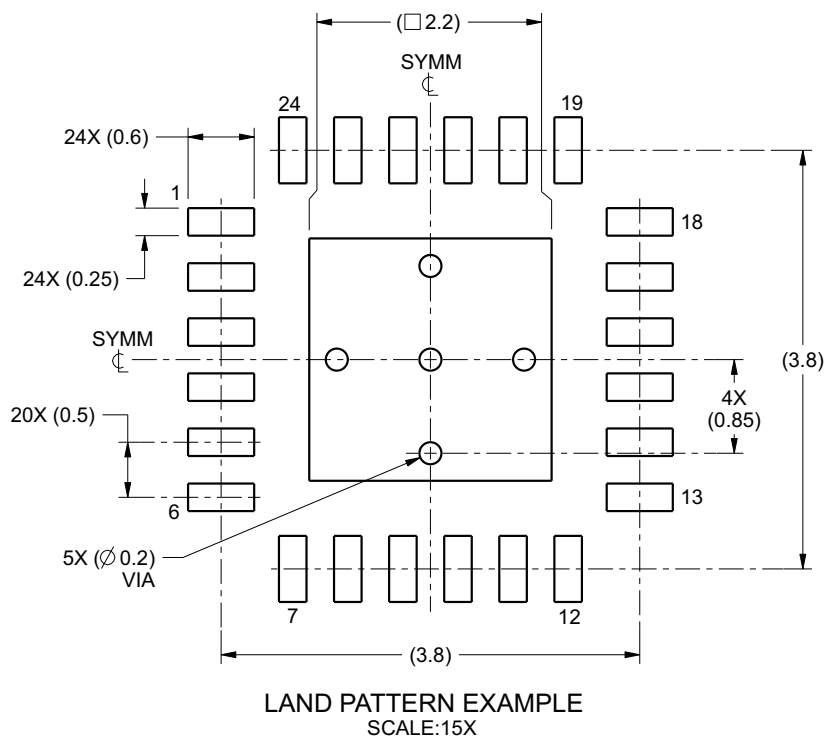
1. All linear dimensions are in millimeters. Any dimensions in parenthesis are for reference only. Dimensioning and tolerancing per ASME Y14.5M.
2. This drawing is subject to change without notice.
3. The package thermal pad must be soldered to the printed circuit board for thermal and mechanical performance.

EXAMPLE BOARD LAYOUT

RTW0024J

WQFN - 0.8 mm max height

PLASTIC QUAD FLATPACK - NO LEAD



4221566/A 08/2014

NOTES: (continued)

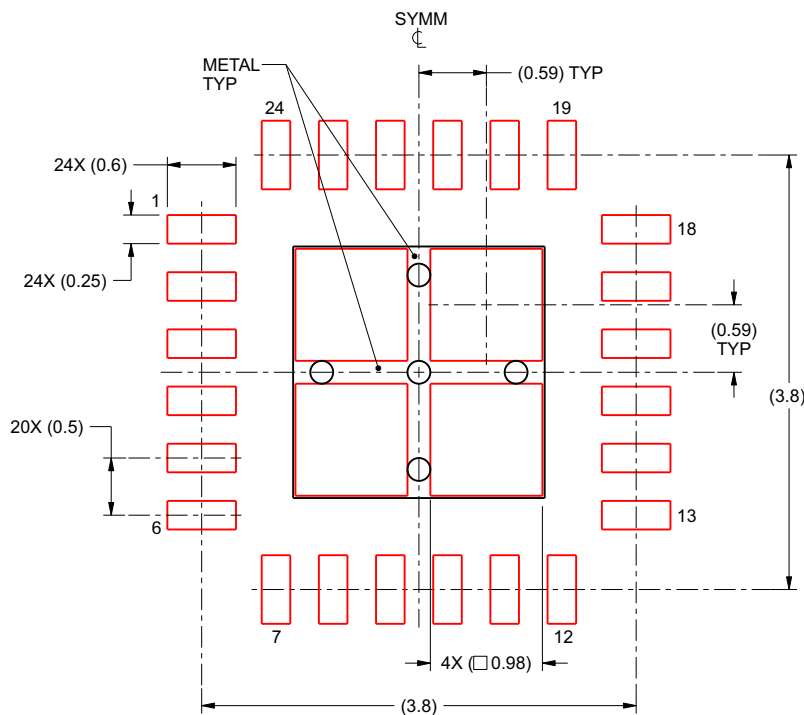
4. This package is designed to be soldered to a thermal pad on the board. For more information, see Texas Instruments literature number SLUA271 (www.ti.com/lit/slua271).

EXAMPLE STENCIL DESIGN

RTW0024J

WQFN - 0.8 mm max height

PLASTIC QUAD FLATPACK - NO LEAD



SOLDER PASTE EXAMPLE
BASED ON 0.125 mm THICK STENCIL
EXPOSED PAD
79% PRINTED SOLDER COVERAGE BY AREA
SCALE:18X

4221566/A 08/2014

NOTES: (continued)

5. Laser cutting apertures with trapezoidal walls and rounded corners may offer better paste release. IPC-7525 may have alternate design recommendations.

www.ti.com

ADVANCE INFORMATION

PACKAGING INFORMATION

| Orderable part number | Status (1) | Material type (2) | Package Pins | Package qty Carrier | RoHS (3) | Lead finish/ Ball material (4) | MSL rating/ Peak reflow (5) | Op temp (°C) | Part marking (6) |
|------------------------------|---------------|----------------------|-----------------|-----------------------|-------------|--------------------------------------|-----------------------------------|--------------|---------------------|
| TCAL9539PWR | Active | Production | TSSOP (PW) 24 | 3000 LARGE T&R | Yes | NIPDAU | Level-1-260C-UNLIM | -40 to 125 | TL9539 |
| TCAL9539PWR.A | Active | Production | TSSOP (PW) 24 | 3000 LARGE T&R | Yes | NIPDAU | Level-1-260C-UNLIM | -40 to 125 | TL9539 |
| TCAL9539PWR.B | Active | Production | TSSOP (PW) 24 | 3000 LARGE T&R | - | NIPDAU | Level-1-260C-UNLIM | -40 to 125 | TL9539 |
| TCAL9539RTWR | Active | Production | WQFN (RTW) 24 | 5000 LARGE T&R | Yes | NIPDAU | Level-1-260C-UNLIM | -40 to 125 | TCAL 9539 |
| TCAL9539RTWR.A | Active | Production | WQFN (RTW) 24 | 5000 LARGE T&R | Yes | NIPDAU | Level-1-260C-UNLIM | -40 to 125 | TCAL 9539 |

⁽¹⁾ **Status:** For more details on status, see our [product life cycle](#).

⁽²⁾ **Material type:** When designated, preproduction parts are prototypes/experimental devices, and are not yet approved or released for full production. Testing and final process, including without limitation quality assurance, reliability performance testing, and/or process qualification, may not yet be complete, and this item is subject to further changes or possible discontinuation. If available for ordering, purchases will be subject to an additional waiver at checkout, and are intended for early internal evaluation purposes only. These items are sold without warranties of any kind.

⁽³⁾ **RoHS values:** Yes, No, RoHS Exempt. See the [TI RoHS Statement](#) for additional information and value definition.

⁽⁴⁾ **Lead finish/Ball material:** Parts may have multiple material finish options. Finish options are separated by a vertical ruled line. Lead finish/Ball material values may wrap to two lines if the finish value exceeds the maximum column width.

⁽⁵⁾ **MSL rating/Peak reflow:** The moisture sensitivity level ratings and peak solder (reflow) temperatures. In the event that a part has multiple moisture sensitivity ratings, only the lowest level per JEDEC standards is shown. Refer to the shipping label for the actual reflow temperature that will be used to mount the part to the printed circuit board.

⁽⁶⁾ **Part marking:** There may be an additional marking, which relates to the logo, the lot trace code information, or the environmental category of the part.

Multiple part markings will be inside parentheses. Only one part marking contained in parentheses and separated by a "~" will appear on a part. If a line is indented then it is a continuation of the previous line and the two combined represent the entire part marking for that device.

Important Information and Disclaimer: The information provided on this page represents TI's knowledge and belief as of the date that it is provided. TI bases its knowledge and belief on information provided by third parties, and makes no representation or warranty as to the accuracy of such information. Efforts are underway to better integrate information from third parties. TI has taken and continues to take reasonable steps to provide representative and accurate information but may not have conducted destructive testing or chemical analysis on incoming materials and chemicals. TI and TI suppliers consider certain information to be proprietary, and thus CAS numbers and other limited information may not be available for release.

In no event shall TI's liability arising out of such information exceed the total purchase price of the TI part(s) at issue in this document sold by TI to Customer on an annual basis.

OTHER QUALIFIED VERSIONS OF TCAL9539 :

- Automotive : [TCAL9539-Q1](#)

NOTE: Qualified Version Definitions:

- Automotive - Q100 devices qualified for high-reliability automotive applications targeting zero defects

IMPORTANT NOTICE AND DISCLAIMER

TI PROVIDES TECHNICAL AND RELIABILITY DATA (INCLUDING DATA SHEETS), DESIGN RESOURCES (INCLUDING REFERENCE DESIGNS), APPLICATION OR OTHER DESIGN ADVICE, WEB TOOLS, SAFETY INFORMATION, AND OTHER RESOURCES "AS IS" AND WITH ALL FAULTS, AND DISCLAIMS ALL WARRANTIES, EXPRESS AND IMPLIED, INCLUDING WITHOUT LIMITATION ANY IMPLIED WARRANTIES OF MERCHANTABILITY, FITNESS FOR A PARTICULAR PURPOSE OR NON-INFRINGEMENT OF THIRD PARTY INTELLECTUAL PROPERTY RIGHTS.

These resources are intended for skilled developers designing with TI products. You are solely responsible for (1) selecting the appropriate TI products for your application, (2) designing, validating and testing your application, and (3) ensuring your application meets applicable standards, and any other safety, security, regulatory or other requirements.

These resources are subject to change without notice. TI grants you permission to use these resources only for development of an application that uses the TI products described in the resource. Other reproduction and display of these resources is prohibited. No license is granted to any other TI intellectual property right or to any third party intellectual property right. TI disclaims responsibility for, and you will fully indemnify TI and its representatives against, any claims, damages, costs, losses, and liabilities arising out of your use of these resources.

TI's products are provided subject to [TI's Terms of Sale](#) or other applicable terms available either on [ti.com](#) or provided in conjunction with such TI products. TI's provision of these resources does not expand or otherwise alter TI's applicable warranties or warranty disclaimers for TI products.

TI objects to and rejects any additional or different terms you may have proposed.

Mailing Address: Texas Instruments, Post Office Box 655303, Dallas, Texas 75265
Copyright © 2025, Texas Instruments Incorporated