

LM50 Industry-Standard, Analog Centigrade (10mV/°C) Temperature Sensor in SOT-23 Package

1 Features

- Industry-Standard Sensor Gain/Offset:
 - 10mV/°C, 500mV at 0°C
- LM50B Temperature Accuracy:
 - ±2°C (Max) at 25°C
 - ±3°C (Max) over temperature range
- LM50C Temperature Accuracy:
 - ±3°C (Max) at 25°C
 - ±4°C (Max) over temperature range
- Operating supply range: 4.5V to 10V
- Quiescent Current (Typ): 95µA
- Available in Standard SOT23-3 package
- Nonlinearity: ±0.8°C (Max)
- DC Output Impedance: 2kΩ/4kΩ (typ/Max)
 - Enables driving large capacitive loads
- [UL Recognized Component](#)

2 Applications

- [Mobile phones, PC & notebooks](#)
- [Data storage](#)
- [Battery Management](#)
- [Home and Multifunction printers](#)
- [Medical and healthcare Instruments](#)
- [HVAC System](#)
- [Power Supply Modules](#)

3 Description

The LM50 device is a precision analog temperature sensor that can measure temperatures from -40°C to 125°C using a single positive supply. The output voltage of the device is linearly proportional to temperature (10mV/°C) and has a DC offset of 500mV at 0°C. The offset allows reading negative temperatures without the need for a negative supply. The output voltage of the LM50 ranges from 100mV (at -40°C) to 1.75V (at 125°C), simplifying analog-to-digital converter (ADC) interfacing.

Unlike NTC thermistors, LM50 does not require any external calibration, trimming or software linearization leading to simplifying the circuitry requirements in a single supply environment. Due to low quiescent current of LM50 (typically around 95µA), self-heating is limited to a very low 0.2°C (in still air) and the device is designed for remote or battery-powered applications. Trimming and calibration of the LM50 at the wafer level provide long-term availability, low cost and consistent accuracy in two grades: LM50B (±2°C at 25°C, ±3°C over temperature range) and LM50C (±3°C at 25°C, ±4°C over temperature range).

Package Information

PART NUMBER	PACKAGE ⁽¹⁾	PACKAGE SIZE ⁽²⁾
LM50	DBZ (SOT-23, 3)	2.37mm × 2.92mm

- For more information, see [Section 11](#).
- The package size (length × width) is a nominal value and includes pins, where applicable.

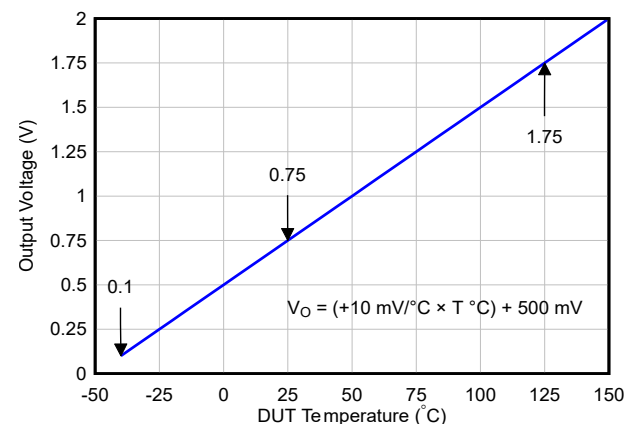
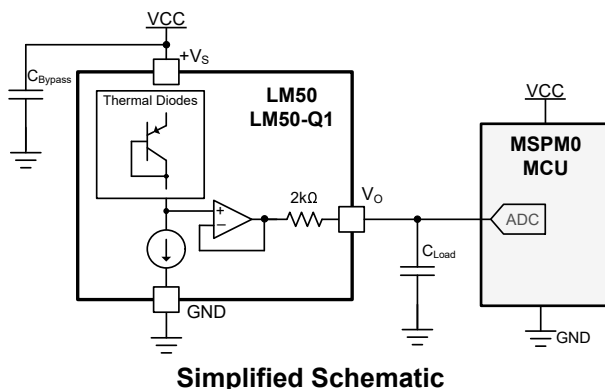


Table of Contents

1 Features	1	7.4 Device Functional Modes.....	11
2 Applications	1	8 Application and Implementation	12
3 Description	1	8.1 Application Information.....	12
4 Device Comparison	3	8.2 Typical Application.....	12
5 Pin Configuration and Functions	4	8.3 System Examples.....	14
6 Specifications	5	8.4 Power Supply Recommendations.....	15
6.1 Absolute Maximum Ratings.....	5	8.5 Layout.....	15
6.2 ESD Ratings.....	5	9 Device and Documentation Support	18
6.3 Recommended Operating Conditions.....	5	9.1 Documentation Support.....	18
6.4 Thermal Information.....	5	9.2 Receiving Notification of Documentation Updates....	18
6.5 Electrical Characteristics: LM50 (LM50B and LM50C)	6	9.3 Support Resources.....	18
6.6 Typical Characteristics.....	7	9.4 Trademarks.....	18
7 Detailed Description	11	9.5 Electrostatic Discharge Caution.....	18
7.1 Overview.....	11	9.6 Glossary.....	18
7.2 Functional Block Diagram.....	11	10 Revision History	18
7.3 Feature Description.....	11	11 Mechanical, Packaging, and Orderable Information	19

4 Device Comparison

Table 4-1. Device Comparison

Feature	LM50B ⁽¹⁾	LM50C ⁽¹⁾ LMT90 ⁽¹⁾	TMP235	LM60 ⁽¹⁾	LM61B ⁽¹⁾	LM20B	LM35 ⁽¹⁾
Sensor gain (mV/°C)	10	10	10	6.25	10	-11.77	10
Sensor gain type	Fixed	Fixed	Fixed	Fixed	Fixed	Fixed	Fixed
Offset (at 0°C) (mV)	500	500	500	424	600	1864	0
Temp Range (°C)	-40 to 125	-40 to 125	-40 to 150	-40 to 125	-25 to 85	-55 to 130	-55 to 150
Power Supply Specifications							
V _{DD} (V)	4.5 to 10	4.5 to 10	2.3 to 5.5	2.7 to 10	2.7 to 10	2.4 to 5.5	4 to 30
I _Q (typ) (µA)	95	95	9	82	82	4.5	67
Temperature Accuracy							
25°C (typ)	-	-	±0.5	-	-	-	±0.2
-55°C (max)	-	-	-	-	-	±2.5	±1
-40°C (max)	-3.5/3	±4	±2	±3	-	±2.3	±0.9
-30°C (max)	-3.3/2.85	±3.85	±2	±2.85	-	±2.2	±0.85
-25°C (max)	-3.2/2.8	±3.8	±2	±2.8	±3	±2.1	±0.8
0°C (max)	-2.6/2.4	±3.4	±1	±2.4	±2.5	±1.9	±0.65
25°C (max)	±2	±3	±1	±2	±2	±1.5	±0.5
30°C (max)	±2.05	±3.05	±1	±2.05	±2.1	±1.5	±0.5
70°C (max)	±2.45	±3.45	±1	±2.45	±2.75	±1.9	±0.7
80°C (max)	±2.55	±3.55	±2	±2.55	±2.9	±2	±0.7
85°C (max)	±2.6	±3.6	±2	±2.6	±3	±2.1	±0.75
100°C (max)	±2.75	±3.75	±2	±2.75	-	±2.2	±0.8
125°C (max)	±3	±4	±2	±3	-	±2.5	±0.9
130°C (max)	-	-	±2	-	-	±2.5	±0.9
150°C (max)	-	-	±2	-	-	-	±1
Packaging Dimension							
Dimensions [mm × mm × mm]	SOT23 (3-pin) 2.9 × 2.4 × 1.1	SOT23 (3-pin) 2.9 × 2.4 × 1.1	SOT23 (3-pin) 2.9 × 2.4 × 1.1 SC70 (5-pin) 2.0 × 2.1 × 1.1	SOT23 (3-pin) 2.9 × 2.4 × 1.1 TO92 (3-pin) 7.4 × 4.8 × 3.7	SOT23 (3-pin) 2.9 × 2.4 × 1.1 TO92 (3-pin) 7.4 × 4.8 × 3.7	SC70 (5-pin) 2.0 × 2.1 × 1.1 DSBGA (4-pin) 0.96 × 0.96 × 0.6	SOIC (8-pin) 4.9 × 6.0 × 1.75 TO92 (3-pin) 7.4 × 4.8 × 3.7 TOCAN (3-pin) 4.7 × 4.7 × 2.67 TO220 (3-pin) 15 × 10 × 4.6

1. LM50B, LM50C, LMT90, LM60, LM61B and LM35 temperature accuracy limits come from the "Accuracy vs Temperature" plot.

Table 4-2. LM50/LM50-Q1 Device Orderable Options

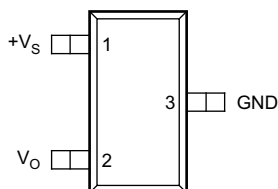
ORDER NUMBER	PACKAGE	ACCURACY OVER TEMPERATURE	SPECIFIED TEMPERATURE RANGE
LM50BIM3	SOT-23 (DBZ) 3-pin	±3°C	−25°C ≤ T _A ≤ +100°C
LM50BIM3X/NOPB ⁽¹⁾			−25°C ≤ T _A ≤ +100°C (Legacy chip)
			−40°C ≤ T _A ≤ +125°C (New chip)
LM50CIM3		±4°C	−40°C ≤ T _A ≤ +125°C
LM50CIM3X			−40°C ≤ T _A ≤ +125°C (Both legacy & new chip)
LM50CIM3X/NOPB			
LM50QIM3X/NOPB		±4°C	−40°C ≤ T _A ≤ +125°C (Both legacy & new chip)

1. LM50BIM3X/NOPB (Legacy chip) operates from -25°C to 100°C while LM50BIM3X/NOPB (New chip) operates from -40°C to 125°C .

Table 4-3. LM50/LM50-Q1 Device Nomenclature Detail

PRODUCT	DESCRIPTION
LM50xlyyy	<p>x indicates that the device has B, C or Q (grade-1 device in accordance with the AEC-Q100 standard) variant. These devices can ship with the legacy chip (CSO: GF6 or SHE) or the new chip (CSO: RFB) with different <i>chip source origin</i> (CSO). The reel packaging label provides date code information to distinguish which chip is being used. Device performance for new and legacy chips is denoted throughout the document.</p> <p>yyy indicates that the package type of the device which can be M3, M3X and M3X/NOPB all in SOT-23 3-pin package.</p>

5 Pin Configuration and Functions

**Figure 5-1. DBZ Package 3-Pin SOT-23 Top View****Table 5-1. Pin Functions**

PIN		TYPE	DESCRIPTION
NO.	NAME		
1	$+V_S$	Power	Positive power supply pin.
2	V_O	Output	Temperature sensor analog output.
3	GND	Ground	Device ground pin, connected to power supply negative terminal.

6 Specifications

6.1 Absolute Maximum Ratings

Over operating free-air temperature range unless otherwise noted⁽¹⁾

		MIN	MAX	UNIT
Supply voltage, +V _S	LM50	-0.2	12	V
Output voltage, V _O		-1	+V _S + 0.6	V
Output current, I _{OUT}			10	mA
Maximum junction temperature, T _J			150	°C
Storage temperature, T _{stg}		-65	150	°C

- (1) Operation outside the *Absolute Maximum Ratings* may cause permanent device damage. *Absolute Maximum Ratings* do not imply functional operation of the device at these or any other conditions beyond those listed under *Recommended Operating Conditions*. If used outside the *Recommended Operating Conditions* but within the *Absolute Maximum Ratings*, the device may not be fully functional, and this may affect device reliability, functionality, performance, and shorten the device lifetime.

6.2 ESD Ratings

			VALUE	UNIT
V _(ESD) , Electrostatic discharge	LM50	Human-body model (HBM), per JESD22-A114 ⁽¹⁾	±2000	V
		Charged-device model (CDM), per JEDEC specification JESD22-C101	±750	

- (1) The human body model is a 100pF capacitor discharged through a 1.5kΩ resistor into each pin. The machine model is a 200pF capacitor discharged directly into each pin.

6.3 Recommended Operating Conditions

Over operating free-air temperature range (unless otherwise noted)

				MIN	MAX	UNIT
+V _S	Supply voltage	LM50		4.5	10	V
T _{MIN} , T _{MAX}	Specified temperature	LM50B	Legacy chip	-25	100	°C
			New chip	-40	125	
		LM50C		-40	125	

6.4 Thermal Information

THERMAL METRIC ⁽¹⁾		LM50		UNIT
		DBZ (SOT-23) 3 PINS		
		LEGACY CHIP	NEW CHIP	
R _{θJA}	Junction-to-ambient thermal resistance	291.9	240.6	°C/W
R _{θJC(top)}	Junction-to-case (top) thermal resistance	114.3	144.5	°C/W
R _{θJB}	Junction-to-board thermal resistance	62.3	72.3	°C/W
Ψ _{JT}	Junction-to-top characterization parameter	7.4	28.7	°C/W
Ψ _{JB}	Junction-to-board characterization parameter	61	71.7	°C/W
R _{θJC(bot)}	Junction-to-case (bottom) thermal resistance	-	-	°C/W

- (1) For more information about traditional and new thermal metrics, see the [Semiconductor and IC Package Thermal Metrics](#) application note.

6.5 Electrical Characteristics: LM50 (LM50B and LM50C)

LM50: $+V_S = 5V$ (DC) and $I_{LOAD} = 0.5\mu A$, $T_A = T_J = 25^\circ C$ (unless otherwise noted)⁽¹⁾

LM50B (Legacy chip only): $T_A = T_{MIN}$ to $T_{MAX} = -25^\circ C$ to $100^\circ C$

LM50B (New chip) and LM50C (Both New and Legacy chip): $T_A = T_{MIN}$ to $T_{MAX} = -40^\circ C$ to $125^\circ C$

PARAMETER		TEST CONDITIONS		MIN	TYP	MAX	UNIT
SENSOR ACCURACY							
T _{ACY}	Temperature accuracy ⁽²⁾	T _A = 25°C	LM50B (Legacy chip)	-2		2	°C
		T _A = T _{MAX} = 100°C		-3		3	
		T _A = T _{MIN} = -25°C		-3.5		3	
		T _A = 25°C	LM50B (New chip)	-2		2	°C
		T _A = T _{MAX} = 125°C		-3		3	
		T _A = T _{MIN} = -40°C		-3.5		3	
		T _A = 25°C	LM50C	-3		3	°C
		T _A = T _{MAX} = 125°C		-4		4	
		T _A = T _{MIN} = -40°C		-4		4	
SENSOR OUTPUT							
V _{0°C}	Output voltage offset at 0°C			500			mV
T _C	Temperature coefficient (sensor gain)	T _A = T _J = T _{MIN} to T _{MAX}		9.7	10	10.3	mV/°C
V _{ONL}	Output Nonlinearity ⁽³⁾	T _A = T _J = T _{MIN} to T _{MAX}		-0.8		0.8	°C
Z _{OUT}	Output impedance	T _A = T _J = T _{MIN} to T _{MAX}			2000	4000	Ω
T _{ON}	Turn-On Time		LM50 (Legacy chip)	5			μs
			LM50 (New chip)	30			
T _{LTD}	Long-term stability and drift ⁽⁴⁾	T _J = 125°C for 1000 hours		±0.08			°C
POWER SUPPLY							
I _{DD}	Operating current	T _A = T _{MIN} to T _{MAX} 4.5V ≤ +V _S ≤ 10V	LM50 (Legacy chip)	95	180		μA
			LM50 (New chip)	52	90		
PSR	Line regulation ⁽⁵⁾	T _A = T _{MIN} to T _{MAX} 4.5V ≤ +V _S ≤ 10V		-1.2		1.2	mV/V
ΔI _{DD}	Change of quiescent current	T _A = T _{MIN} to T _{MAX} 4.5V ≤ +V _S ≤ 10V	LM50 (Legacy chip)			2	μA
			LM50 (New chip)			8	
I _{DD_TEMP}	Temperature coefficient of quiescent current	T _A = T _{MIN} to T _{MAX} 4.5V ≤ +V _S ≤ 10V	LM50B	1			μA/°C
			LM50C	2			

(1) Limits are specified to TI's AOQL (Average Outgoing Quality Level).

(2) Accuracy is defined as the error between the output voltage and $10mV/^\circ C$ multiplied by case temperature of the device plus 500mV, at specified conditions of voltage, current, and temperature (expressed in $^\circ C$).

(3) Nonlinearity is defined as the deviation of the output-voltage-versus-temperature curve from the best-fit straight line, over the rated temperature range of the device.

(4) For best long-term stability, any precision circuit provides best results if the unit is aged at a warm temperature, and/or temperature cycled for at least 46 hours before long-term life test begins. This is especially true when a small (Surface-Mount) part is wave-soldered; allow time for stress relaxation to occur. The majority of the drift occurs in the first 1000 hours at elevated temperatures. The drift after 1000 hours does not continue at the first 1000 hour rate.

(5) Regulation is measured at constant junction temperature, using pulse testing with a low duty cycle. Changes in output due to heating effects can be computed by multiplying the internal dissipation by the thermal resistance.

6.6 Typical Characteristics

To generate these curves the device is mounted to a printed circuit board as shown in [Figure 8-9](#) or [Figure 8-10](#).

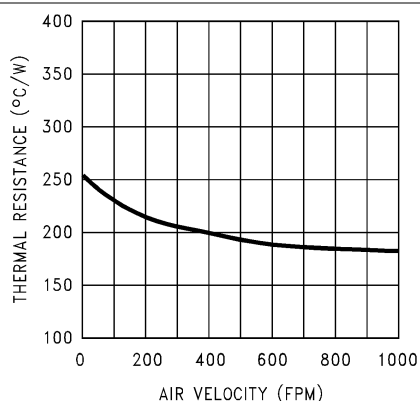


Figure 6-1. Thermal Resistance Junction-to-Ambient (Legacy chip)

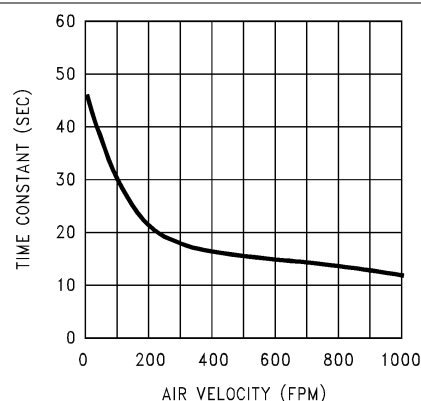


Figure 6-2. Thermal Time Constant (Legacy chip)

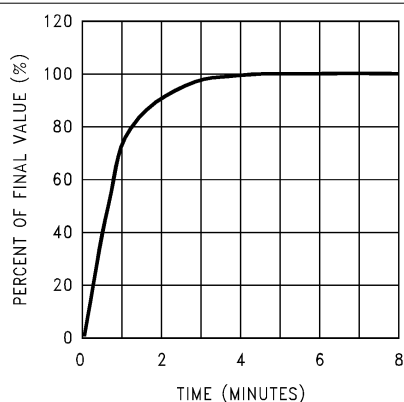


Figure 6-3. Thermal Response in Still Air With Heat Sink (Legacy chip)

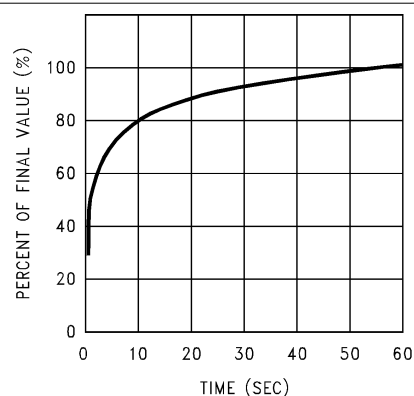


Figure 6-4. Thermal Response in Stirred Oil Bath With Heat Sink (Legacy chip)

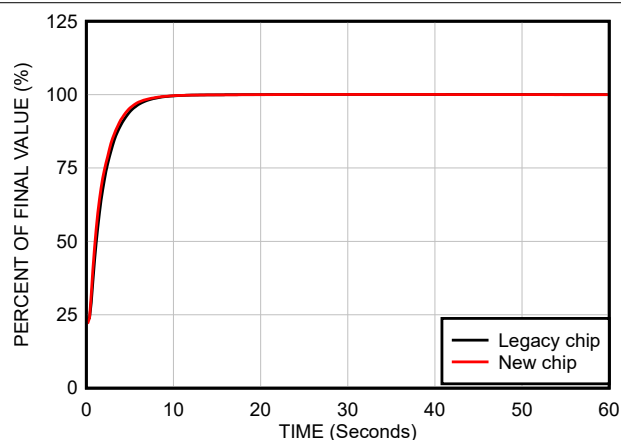


Figure 6-5. Thermal Response in Stirred Oil Bath With Heat Sink (0.5 inches x 0.5 inches PCB board)

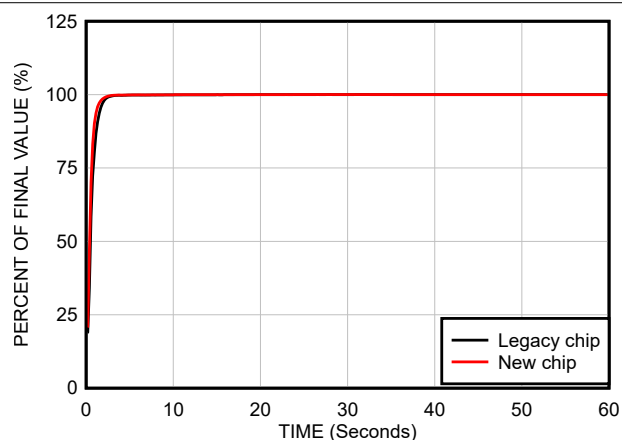


Figure 6-6. Thermal Response in Stirred Oil Bath Without Heat Sink

6.6 Typical Characteristics (continued)

To generate these curves the device is mounted to a printed circuit board as shown in [Figure 8-9](#) or [Figure 8-10](#).

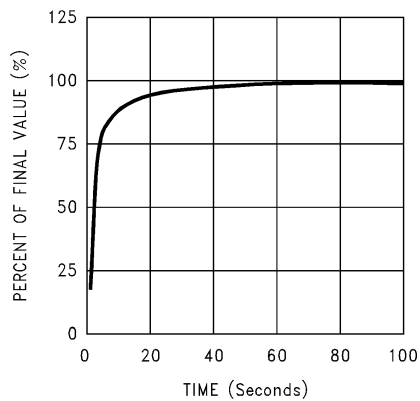


Figure 6-7. Thermal Response in Still Air Without a Heat Sink (Legacy chip)

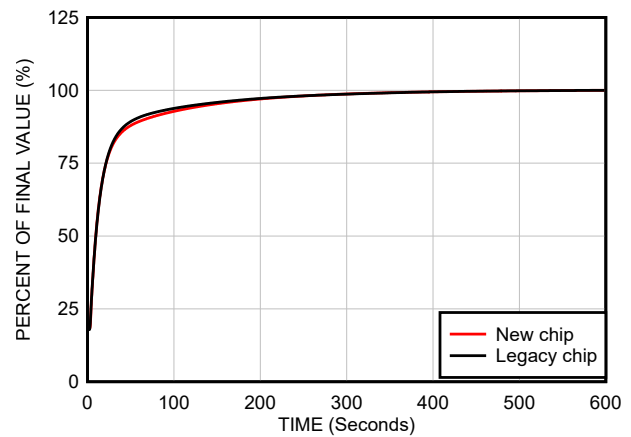


Figure 6-8. Thermal Response in Still Air Without a Heat Sink (Both Legacy and New Chip in the New Test Setup)

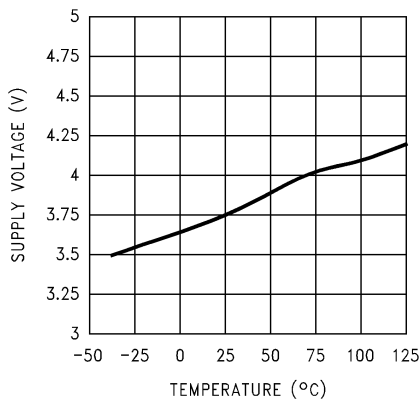


Figure 6-9. Start-Up Voltage vs Temperature (Legacy chip)

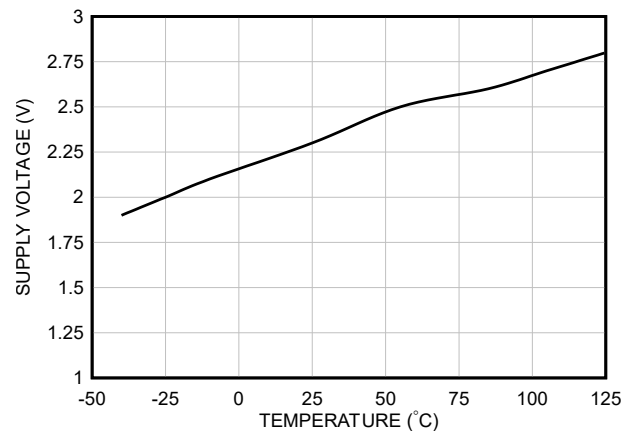


Figure 6-10. Start-Up Voltage vs Temperature (New chip)

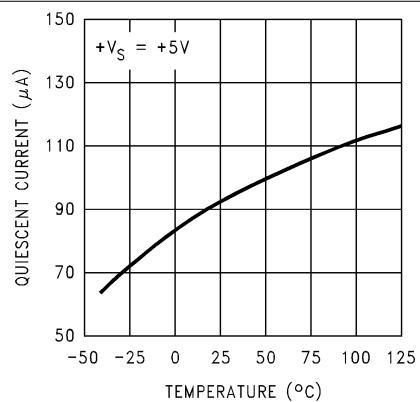


Figure 6-11. Quiescent Current vs Temperature (Legacy chip)

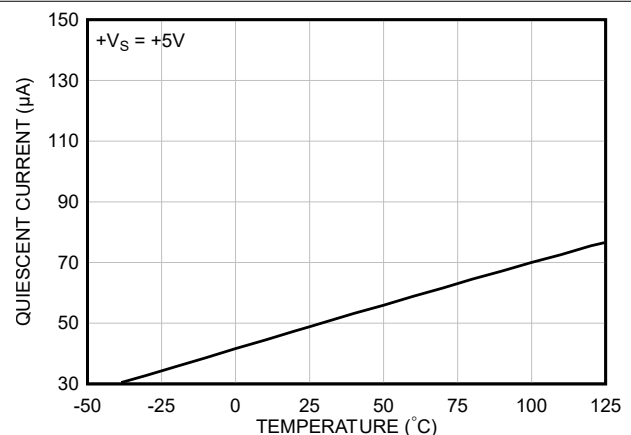


Figure 6-12. Quiescent Current vs Temperature (New chip)

6.6 Typical Characteristics (continued)

To generate these curves the device is mounted to a printed circuit board as shown in [Figure 8-9](#) or [Figure 8-10](#).

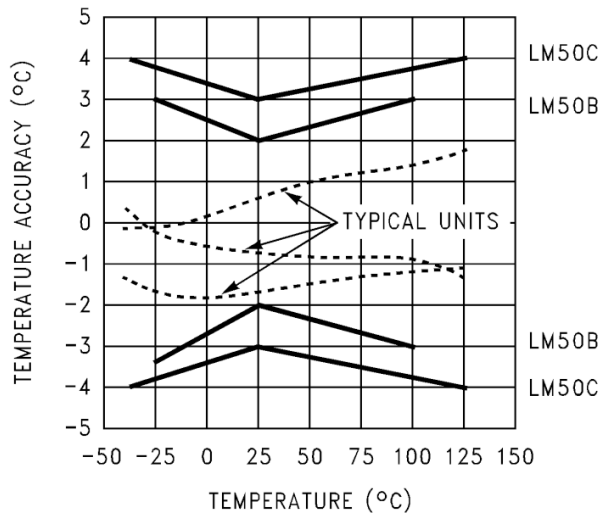


Figure 6-13. Accuracy vs Temperature (Legacy chip)

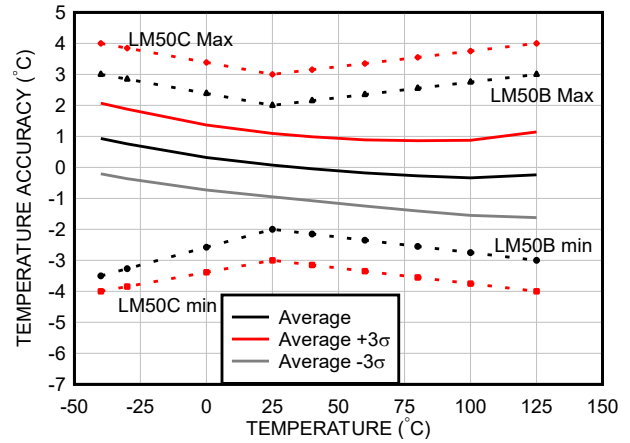


Figure 6-14. Accuracy vs Temperature (New chip)

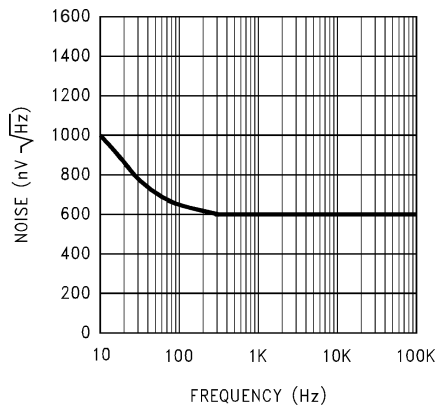


Figure 6-15. Noise Voltage (Legacy chip)

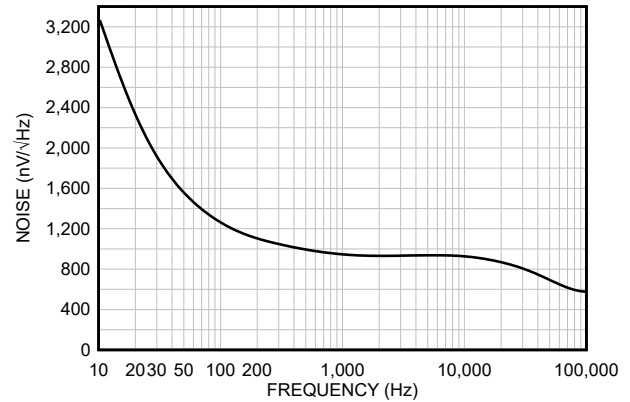


Figure 6-16. Noise Voltage (New chip)

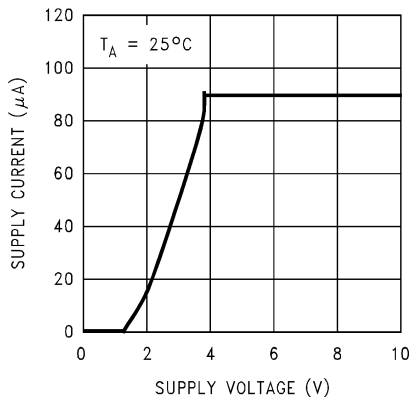


Figure 6-17. Supply Current vs Supply Voltage (Legacy chip)

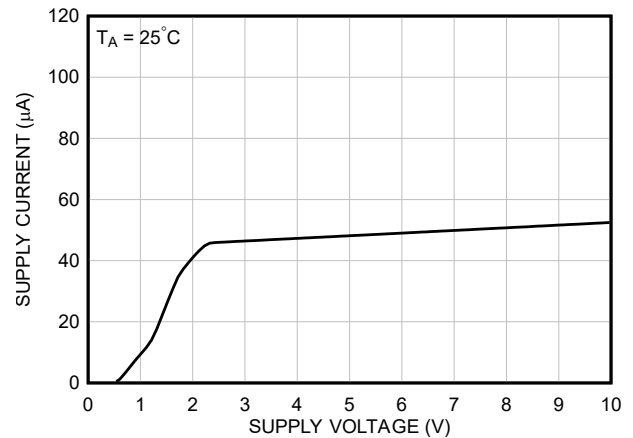


Figure 6-18. Supply Current vs Supply Voltage (New chip)

6.6 Typical Characteristics (continued)

To generate these curves the device is mounted to a printed circuit board as shown in [Figure 8-9](#) or [Figure 8-10](#).

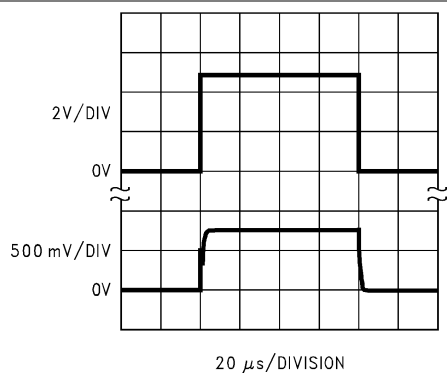


Figure 6-19. Start-Up Response (Legacy chip)

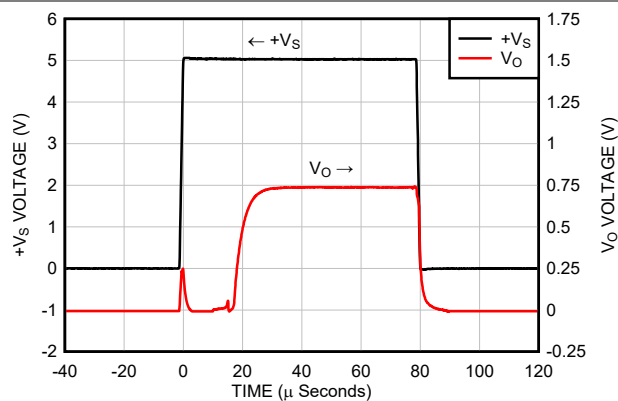


Figure 6-20. Start-Up Response (New chip)

7 Detailed Description

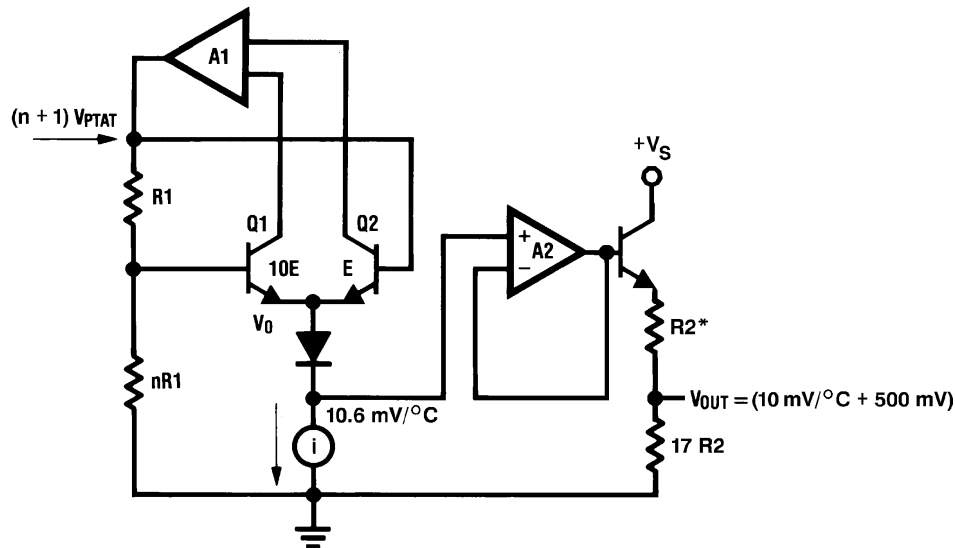
7.1 Overview

The LM50 device is a precision integrated-circuit temperature sensor that can sense a -40°C to 125°C temperature range using a single positive supply. The output voltage of the LM50 has a positive temperature slope of $10\text{mV}/^{\circ}\text{C}$. A 500mV offset is included enabling negative temperature sensing when biased by a single supply.

The temperature-sensing element is comprised of a delta- V_{BE} architecture. The temperature-sensing element is then buffered by an amplifier and provided to the V_{O} pin. The amplifier has a simple class A output stage with typical $2\text{k}\Omega$ output impedance as shown in the [Functional Block Diagram](#).

7.2 Functional Block Diagram

* $R2 \cong 2\text{k}$ with a typical $1300\text{ppm}/^{\circ}\text{C}$ drift.



7.3 Feature Description

7.3.1 LM50 Transfer Function

The LM50 follow a simple linear transfer function to achieve the accuracy as listed in the [Section 6.5](#) table.

Use [Equation 1](#) to calculate the value of V_{O} .

$$V_{\text{O}} = 10\text{mV}/^{\circ}\text{C} \times T^{\circ}\text{C} + 500\text{mV} \quad (1)$$

where

- T is the temperature in $^{\circ}\text{C}$
- V_{O} is the LM50 output voltage

7.4 Device Functional Modes

The only functional mode of the device has an analog output directly proportional to temperature.

8 Application and Implementation

Note

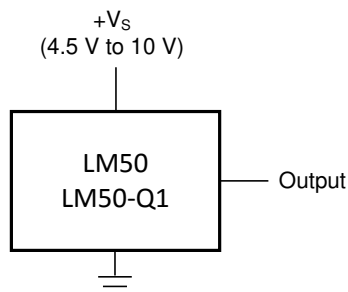
Information in the following applications sections is not part of the TI component specification, and TI does not warrant its accuracy or completeness. TI's customers are responsible for determining suitability of components for their purposes, as well as validating and testing their design implementation to confirm system functionality.

8.1 Application Information

The LM50 has a wide supply range and a 10mV/°C output slope with a 500mV DC offset. Therefore, the device can be easily placed in many temperature-sensing applications where a single supply is required for positive and negative temperatures.

8.2 Typical Application

8.2.1 Full-Range Centigrade Temperature Sensor



Copyright © 2016, Texas Instruments Incorporated

Figure 8-1. Full-Range Centigrade Temperature Sensor Diagram (–40°C to 125°C)

8.2.1.1 Design Requirements

For this design example, use the parameters listed in [Table 8-1](#) as the input parameters.

Table 8-1. Design Parameters

PARAMETER	VALUE
Power supply voltage	4.5V to 10V
Output impedance	4kΩ (maximum)
Accuracy at 25°C	±2°C/±3°C (maximum)
Accuracy over –40°C to 125°C	±3°C/±4°C (maximum)
Temperature slope	10mV/°C

8.2.1.2 Detailed Design Procedure

The LM50 is a simple temperature sensor that provides an analog output. Therefore design requirements related to layout are more important than other requirements. See [Layout](#) for more information.

8.2.1.2.1 Capacitive Loads

The LM50 handles capacitive loading very well. Without any special precautions, the LM50 can drive any capacitive load. The device has a nominal 2kΩ output impedance (shown in [Functional Block Diagram](#)). The temperature coefficient of the output resistors is approximately 1300ppm/°C. Taking into account this temperature coefficient and the initial tolerance of the resistors the output impedance of the device does not exceed 4kΩ. In an extremely noisy environment adding filtering can be necessary to minimize noise pickup. TI recommends adding a 0.1μF capacitor between +V_S and GND to bypass the power supply voltage, as shown in [Figure 8-3](#). Adding a capacitor from V_O to ground can be necessary. A 1μF output capacitor with the 4kΩ output

impedance forms a 40Hz low-pass filter. Since the thermal time constant of the LM50 is much slower than the 25ms time constant formed by the RC, the overall response time of the device is not significantly affected. For much larger capacitors this additional time lag increases the overall response time of the LM50 .

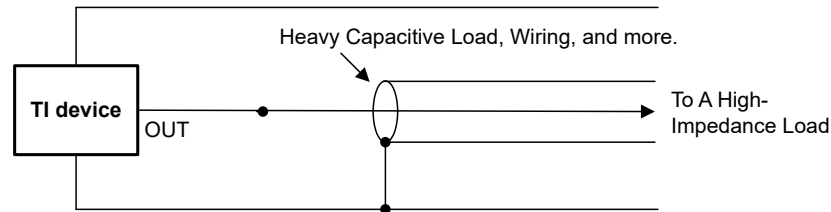


Figure 8-2. LM50 No Decoupling Required for Capacitive Load

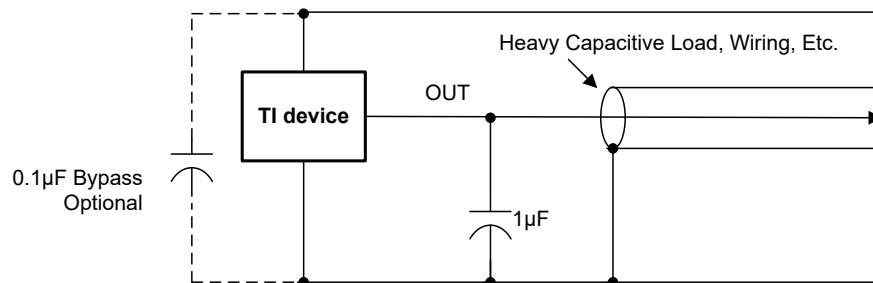


Figure 8-3. LM50 With Filter for Noisy Environment

8.2.1.3 Application Curve

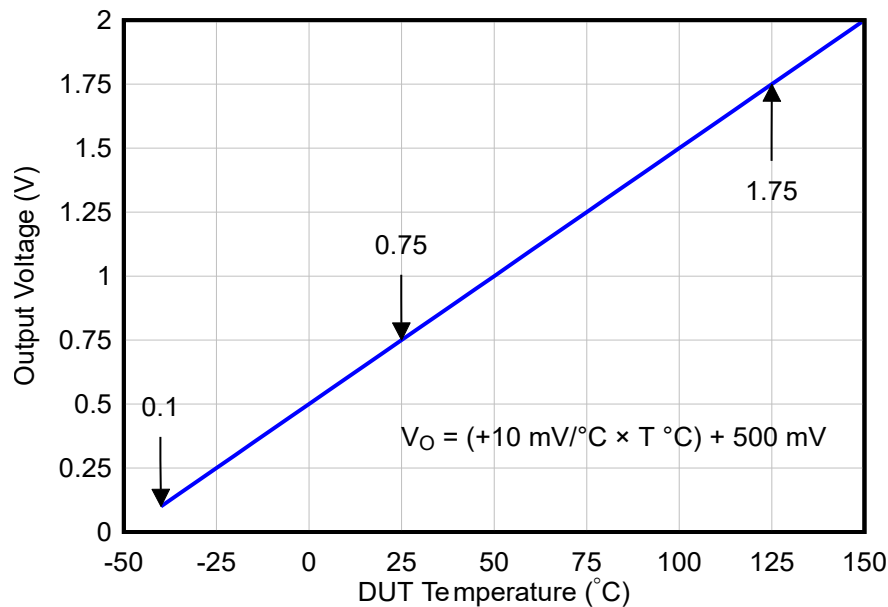
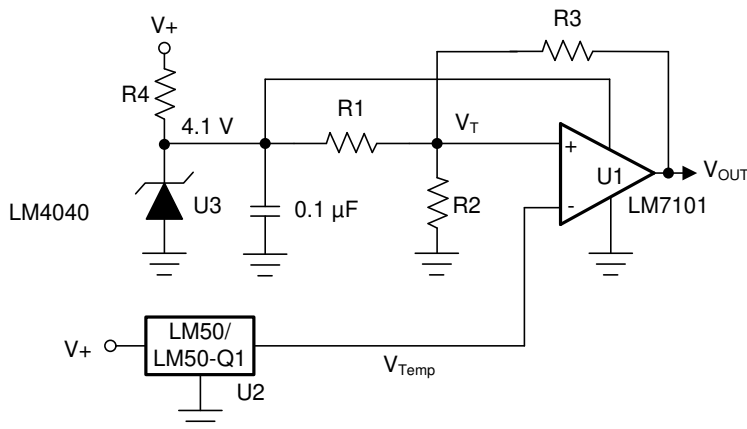


Figure 8-4. Output Transfer Function

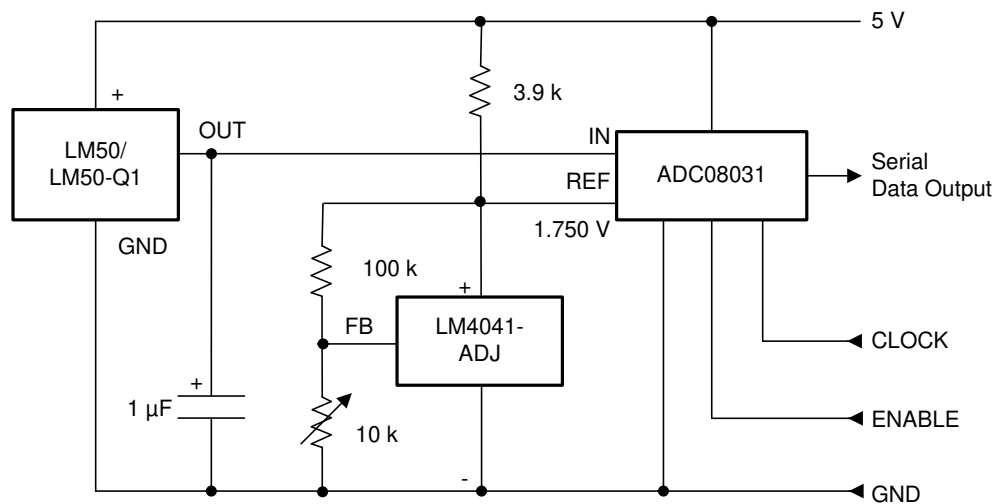
8.3 System Examples

Figure 8-5 to Figure 8-7 show application circuit examples using the LM50 device. Customers must fully validate and test any circuit before implementing a design based on an example in this section. Unless otherwise noted, the design procedures in [Full-Range Centigrade Temperature Sensor](#) are applicable.



Copyright © 2016, Texas Instruments Incorporated

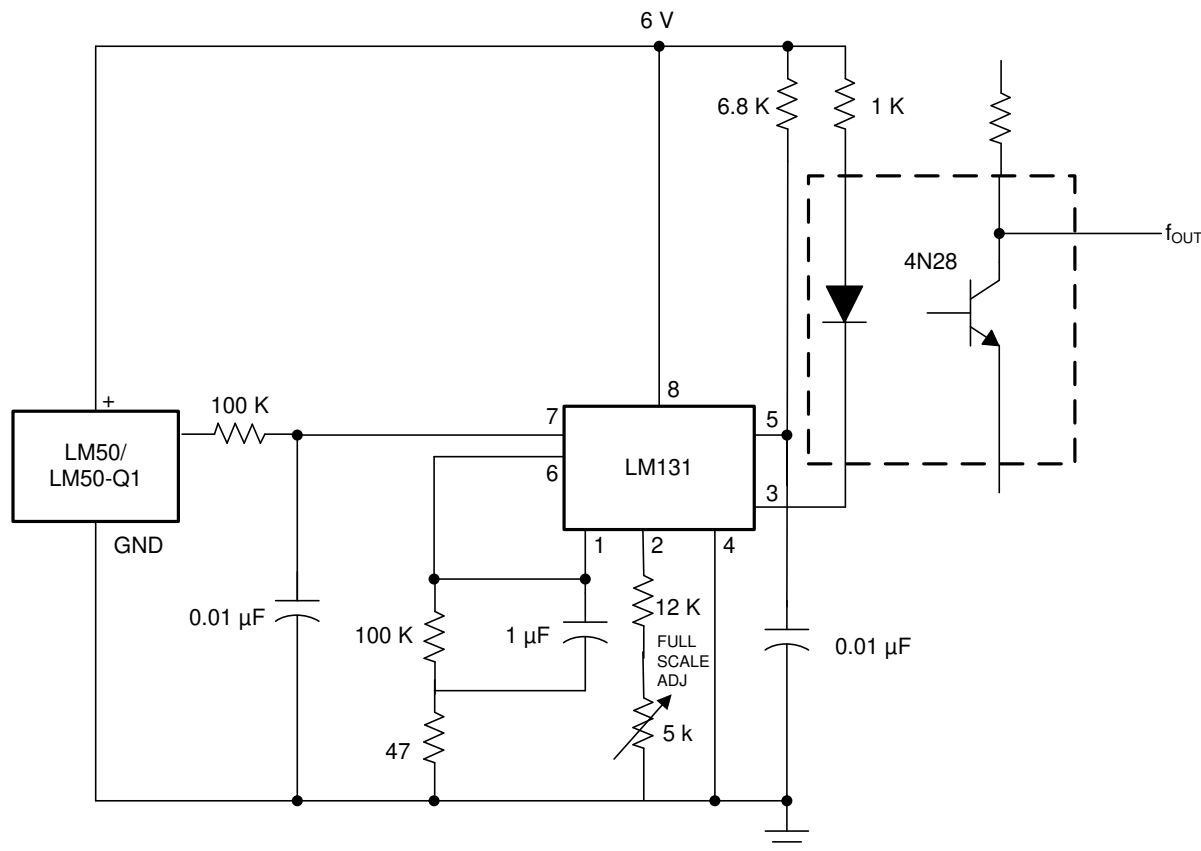
Figure 8-5. Centigrade Thermostat or Fan Controller



Copyright © 2016, Texas Instruments Incorporated

125°C full scale

Figure 8-6. Temperature To Digital Converter (Serial Output)



Copyright © 2016, Texas Instruments Incorporated

–40°C to 125°C; 100Hz to 1750Hz

Figure 8-7. LM50 With Voltage-To-Frequency Converter and Isolated Output

8.4 Power Supply Recommendations

In an extremely noisy environment, adding some filtering to minimize noise pickup can be necessary. TI recommends that a 0.1μF capacitor be added from +V_S to GND to bypass the power supply voltage, as shown in [Figure 8-3](#).

8.5 Layout

8.5.1 Layout Guidelines

The LM50 can be applied easily in the same way as other integrated-circuit temperature sensors. The device can be glued or cemented to a surface and the temperature is within about 0.2°C of the surface temperature.

This presumes that the ambient air temperature is approximately the same as the surface temperature; if the air temperature are much higher or lower than the surface temperature, the actual temperature of the LM50 die is at an intermediate temperature between the surface temperature and the air temperature.

To provide good thermal conductivity, the backside of the LM50 die is directly attached to the GND pin. The lands and traces to the device is part of the printed-circuit board, which is the object whose temperature is being measured. These printed-circuit board lands and traces do not cause the LM50 temperature to deviate from the desired temperature.

Alternatively, the LM50 can be mounted inside a sealed-end metal tube, and can then be dipped into a bath or screwed into a threaded hole in a tank. As with any device, the LM50 and accompanying wiring and circuits must be kept insulated and dry, to avoid leakage and corrosion. This is especially true if the circuit can operate at cold

temperatures where condensation can occur. Printed-circuit coatings and varnishes such as HUMISEAL® and epoxy paints or dips are often used to verify that moisture cannot corrode the device or the connections.

8.5.2 Layout Example

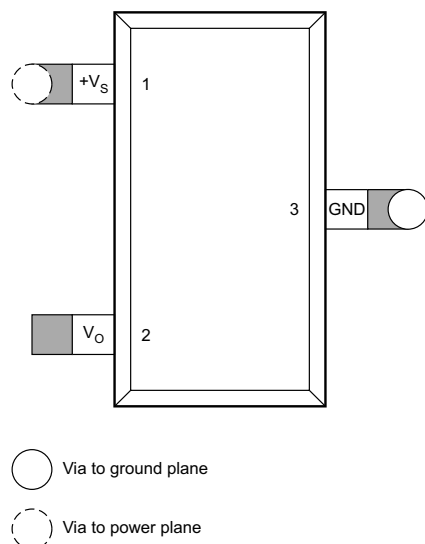
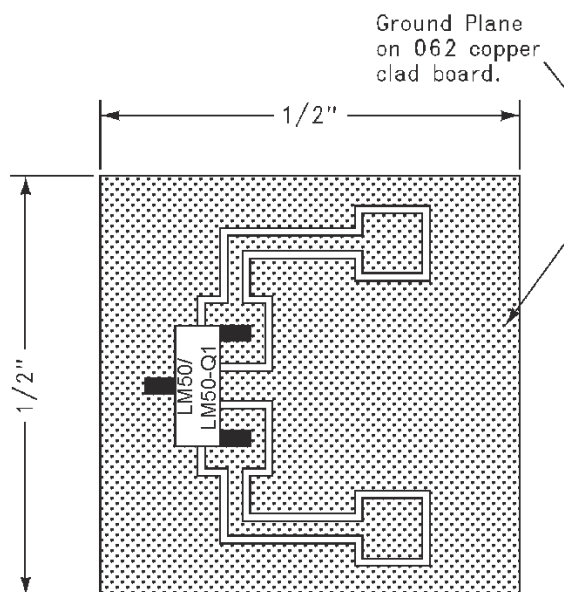


Figure 8-8. PCB Layout



1/2in, square printed-circuit board with 2oz foil or similar

Figure 8-9. Printed-Circuit Board Used for Heat Sink to Generate Thermal Response Curves (Legacy chip)

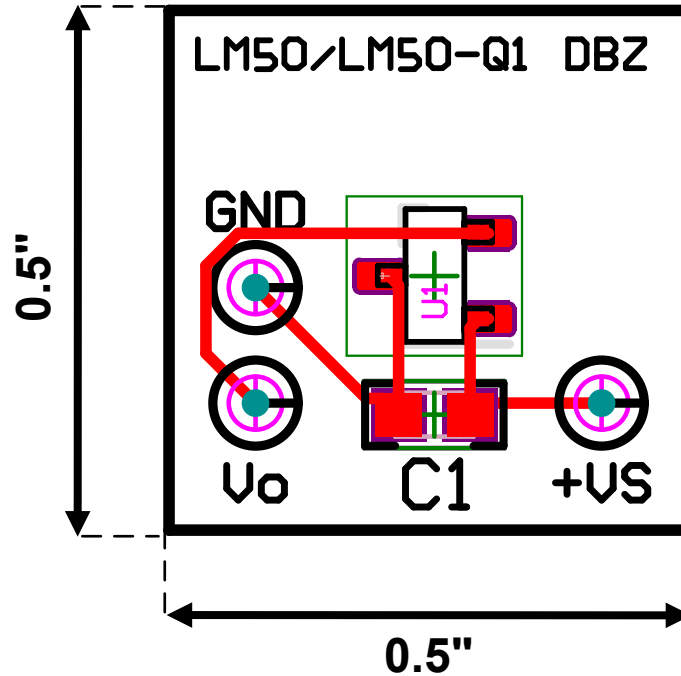


Figure 8-10. Printed-Circuit Board Used to Generate Thermal Response Curves (New Test Setup for Both New Chip and Legacy Chip)

8.5.3 Thermal Considerations

Table 8-2 summarizes the thermal resistance of the LM50 for different conditions.

Table 8-2. Temperature Rise of LM50 Due to Self-Heating

			$R_{\theta JA}$ ($^{\circ}\text{C/W}$)
SOT-23	No heat sink ⁽¹⁾	Still air (Legacy chip)	291.9
		Moving air (Legacy chip)	-
	Small heat fin ⁽²⁾	Still air (Legacy chip)	260
		Moving air (Legacy chip)	180

(1) Part soldered to 30 gauge wire.

(2) Heat sink used is 0.5inch, square printed-circuit board with 2oz foil; part attached as shown in Figure 8-9.

9 Device and Documentation Support

9.1 Documentation Support

Related Documentation

For related documentation see the following:

- Texas Instruments, [TMP23x Low-Power, High-Accuracy Analog Output Temperature Sensors](#), data sheet
- Texas Instruments, [ISOTMP35 \$\pm 1.2^{\circ}\text{C}\$, 3-kVRMS Isolated Temperature Sensor With Analog Output With < 2 Seconds Response Time and 500VRMS Working Voltage](#), data sheet
- Texas Instruments, [LM60 2.7V, SOT-23 or TO-92 Temperature Sensor](#), data sheet
- Texas Instruments, [LMT90 SOT-23 Single-Supply Centigrade Temperature Sensor](#), data sheet
- Texas Instruments, [Tiny Temperature Sensors for Remote Systems](#), application note
- Texas Instruments, [Semiconductor Temperature Sensors Challenge Precision RTDs and Thermistors in Building Automation](#), application note
- Texas Instruments, [LMT90 Temperature Sensor Evaluation Module](#), EVM

9.2 Receiving Notification of Documentation Updates

To receive notification of documentation updates, navigate to the device product folder on ti.com. Click on *Notifications* to register and receive a weekly digest of any product information that has changed. For change details, review the revision history included in any revised document.

9.3 Support Resources

TI E2E™ support forums are an engineer's go-to source for fast, verified answers and design help — straight from the experts. Search existing answers or ask your own question to get the quick design help you need.

Linked content is provided "AS IS" by the respective contributors. They do not constitute TI specifications and do not necessarily reflect TI's views; see TI's [Terms of Use](#).

9.4 Trademarks

TI E2E™ is a trademark of Texas Instruments.

HUMISEAL® is a registered trademark of Columbia Chase Corporation.

All trademarks are the property of their respective owners.

9.5 Electrostatic Discharge Caution



This integrated circuit can be damaged by ESD. Texas Instruments recommends that all integrated circuits be handled with appropriate precautions. Failure to observe proper handling and installation procedures can cause damage.

ESD damage can range from subtle performance degradation to complete device failure. Precision integrated circuits may be more susceptible to damage because very small parametric changes could cause the device not to meet its published specifications.

9.6 Glossary

TI Glossary

This glossary lists and explains terms, acronyms, and definitions.

10 Revision History

NOTE: Page numbers for previous revisions may differ from page numbers in the current version.

Changes from Revision G (January 2017) to Revision H (May 2025)	Page
• Updated the numbering format for tables, figures, and cross-references throughout the document.....	1
• Moved the automotive device to a standalone data sheet (SNIS249).....	1
• Added specifications and graphs for the New Device and comparison of the Legacy Device throughout the document	1
• Added <i>Device Comparison</i> , <i>Device Orderable Options</i> , and <i>Nomenclature Details</i> tables.....	3
• Deleted Machine Model (MM) Electrostatic discharge.....	5

• Changed the specified temperature range for LM50B from -25°C to 100°C (in the legacy chip) to -40°C to 125°C (in the new chip).....	5
• Added DBZ package “Thermal Information” for the New chip.....	5
• Added “Turn-on Time” for both Legacy chip and New chip.....	6
• Added “ <i>Operating current</i> ” and “ <i>Change of quiescent current</i> ” for the New chip.....	6
• Updated the <i>Design Parameters</i> table to correct typos.....	12

Changes from Revision F (December 2016) to Revision G (January 2017)	Page
• Changed <i>LMT90</i> to <i>LM50</i> in V_O description of Equation 1	11

Changes from Revision E (September 2013) to Revision F (December 2016)	Page
• Added <i>Device Information</i> table, <i>Pin Configuration and Functions</i> section, <i>ESD Ratings</i> table, <i>Detailed Description</i> section, <i>Application and Implementation</i> section, <i>Power Supply Recommendations</i> section, <i>Layout</i> section, <i>Device and Documentation Support</i> section, and <i>Mechanical, Packaging, and Orderable Information</i> section	1
• Deleted the <i>Temperature To Digital Converter (Parallel TRI-STATE Outputs for Standard Data Bus to μP Interface) (125°C Full Scale)</i> figure.....	14

Changes from Revision C (February 2013) to Revision E (September 2013)	Page
• Added LM50-Q1 option throughout document.....	1

11 Mechanical, Packaging, and Orderable Information

The following pages include mechanical, packaging, and orderable information. This information is the most current data available for the designated devices. This data is subject to change without notice and revision of this document. For browser-based versions of this data sheet, refer to the left-hand navigation.

PACKAGING INFORMATION

Orderable part number	Status (1)	Material type (2)	Package Pins	Package qty Carrier	RoHS (3)	Lead finish/ Ball material (4)	MSL rating/ Peak reflow (5)	Op temp (°C)	Part marking (6)
LM50BIM3	NRND	Production	SOT-23 (DBZ) 3	1000 LARGE T&R	No	Call TI	Level-1-260C-UNLIM	-40 to 150	T5B
LM50BIM3.B	NRND	Production	SOT-23 (DBZ) 3	1000 LARGE T&R	No	Call TI	Level-1-260C-UNLIM	-40 to 150	T5B
LM50BIM3/NOPB	Obsolete	Production	SOT-23 (DBZ) 3	-	-	Call TI	Call TI	-40 to 125	T5B
LM50BIM3X/NOPB	Active	Production	SOT-23 (DBZ) 3	3000 LARGE T&R	Yes	SN	Level-1-260C-UNLIM	-40 to 125	T5B
LM50BIM3X/NOPB.A	Active	Production	SOT-23 (DBZ) 3	3000 LARGE T&R	Yes	SN	Level-1-260C-UNLIM	-40 to 125	T5B
LM50BIM3X/NOPB.B	Active	Production	SOT-23 (DBZ) 3	3000 LARGE T&R	Yes	SN	Level-1-260C-UNLIM	-40 to 125	T5B
LM50CIM3	Active	Production	SOT-23 (DBZ) 3	1000 SMALL T&R	No	Call TI	Level-1-260C-UNLIM	-40 to 125	T5C
LM50CIM3.B	Active	Production	SOT-23 (DBZ) 3	1000 SMALL T&R	No	Call TI	Level-1-260C-UNLIM	-40 to 125	T5C
LM50CIM3X	NRND	Production	SOT-23 (DBZ) 3	3000 LARGE T&R	No	Call TI	Level-1-260C-UNLIM	-40 to 150	T5C
LM50CIM3X.B	NRND	Production	SOT-23 (DBZ) 3	3000 LARGE T&R	No	Call TI	Level-1-260C-UNLIM	-40 to 150	T5C
LM50CIM3X/NOPB	Active	Production	SOT-23 (DBZ) 3	3000 LARGE T&R	Yes	SN	Level-1-260C-UNLIM	-40 to 125	T5C
LM50CIM3X/NOPB.A	Active	Production	SOT-23 (DBZ) 3	3000 LARGE T&R	Yes	SN	Level-1-260C-UNLIM	-40 to 125	T5C
LM50CIM3X/NOPB.B	Active	Production	SOT-23 (DBZ) 3	3000 LARGE T&R	Yes	SN	Level-1-260C-UNLIM	-40 to 125	T5C

(1) **Status:** For more details on status, see our [product life cycle](#).

(2) **Material type:** When designated, preproduction parts are prototypes/experimental devices, and are not yet approved or released for full production. Testing and final process, including without limitation quality assurance, reliability performance testing, and/or process qualification, may not yet be complete, and this item is subject to further changes or possible discontinuation. If available for ordering, purchases will be subject to an additional waiver at checkout, and are intended for early internal evaluation purposes only. These items are sold without warranties of any kind.

(3) **RoHS values:** Yes, No, RoHS Exempt. See the [TI RoHS Statement](#) for additional information and value definition.

(4) **Lead finish/Ball material:** Parts may have multiple material finish options. Finish options are separated by a vertical ruled line. Lead finish/Ball material values may wrap to two lines if the finish value exceeds the maximum column width.

(5) **MSL rating/Peak reflow:** The moisture sensitivity level ratings and peak solder (reflow) temperatures. In the event that a part has multiple moisture sensitivity ratings, only the lowest level per JEDEC standards is shown. Refer to the shipping label for the actual reflow temperature that will be used to mount the part to the printed circuit board.

(6) **Part marking:** There may be an additional marking, which relates to the logo, the lot trace code information, or the environmental category of the part.

Multiple part markings will be inside parentheses. Only one part marking contained in parentheses and separated by a "~" will appear on a part. If a line is indented then it is a continuation of the previous line and the two combined represent the entire part marking for that device.

Important Information and Disclaimer: The information provided on this page represents TI's knowledge and belief as of the date that it is provided. TI bases its knowledge and belief on information provided by third parties, and makes no representation or warranty as to the accuracy of such information. Efforts are underway to better integrate information from third parties. TI has taken and continues to take reasonable steps to provide representative and accurate information but may not have conducted destructive testing or chemical analysis on incoming materials and chemicals. TI and TI suppliers consider certain information to be proprietary, and thus CAS numbers and other limited information may not be available for release.

In no event shall TI's liability arising out of such information exceed the total purchase price of the TI part(s) at issue in this document sold by TI to Customer on an annual basis.

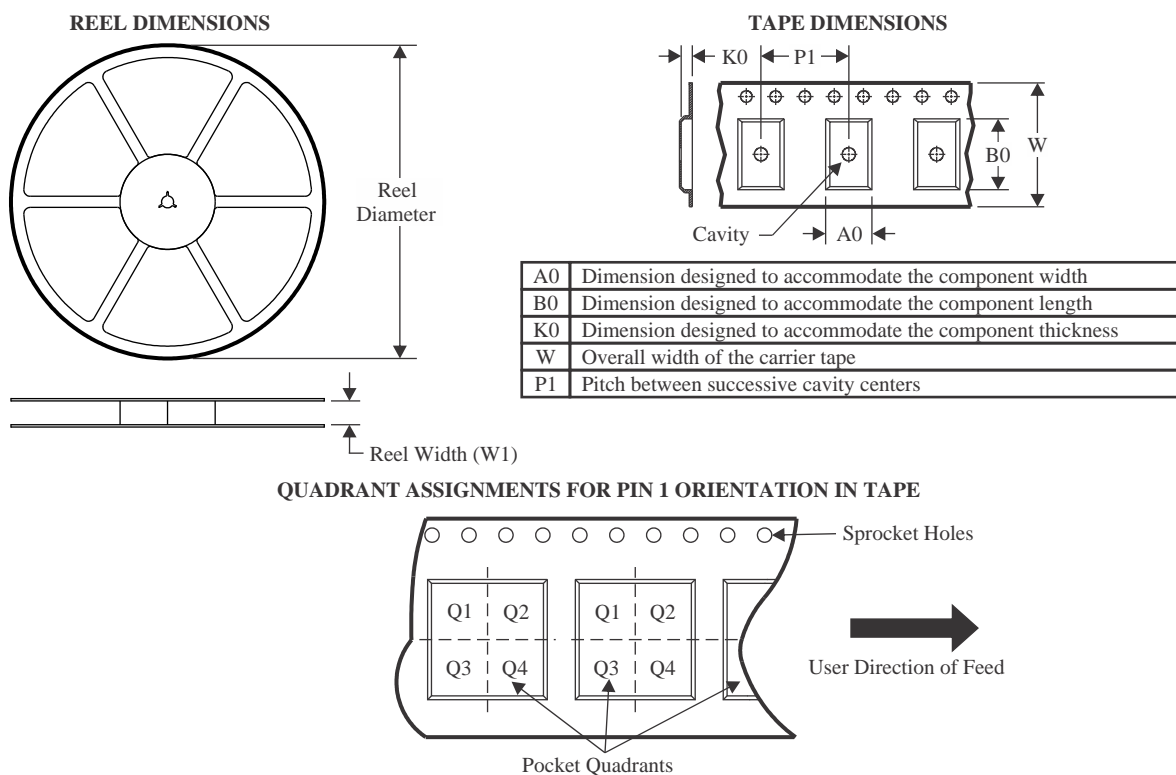
OTHER QUALIFIED VERSIONS OF LM50 :

- Automotive : [LM50-Q1](#)

NOTE: Qualified Version Definitions:

- Automotive - Q100 devices qualified for high-reliability automotive applications targeting zero defects

TAPE AND REEL INFORMATION



*All dimensions are nominal

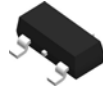
Device	Package Type	Package Drawing	Pins	SPQ	Reel Diameter (mm)	Reel Width W1 (mm)	A0 (mm)	B0 (mm)	K0 (mm)	P1 (mm)	W (mm)	Pin1 Quadrant
LM50BIM3X/NOPB	SOT-23	DBZ	3	3000	178.0	8.4	3.3	2.9	1.22	4.0	8.0	Q3
LM50CIM3X/NOPB	SOT-23	DBZ	3	3000	178.0	8.4	3.3	2.9	1.22	4.0	8.0	Q3

TAPE AND REEL BOX DIMENSIONS

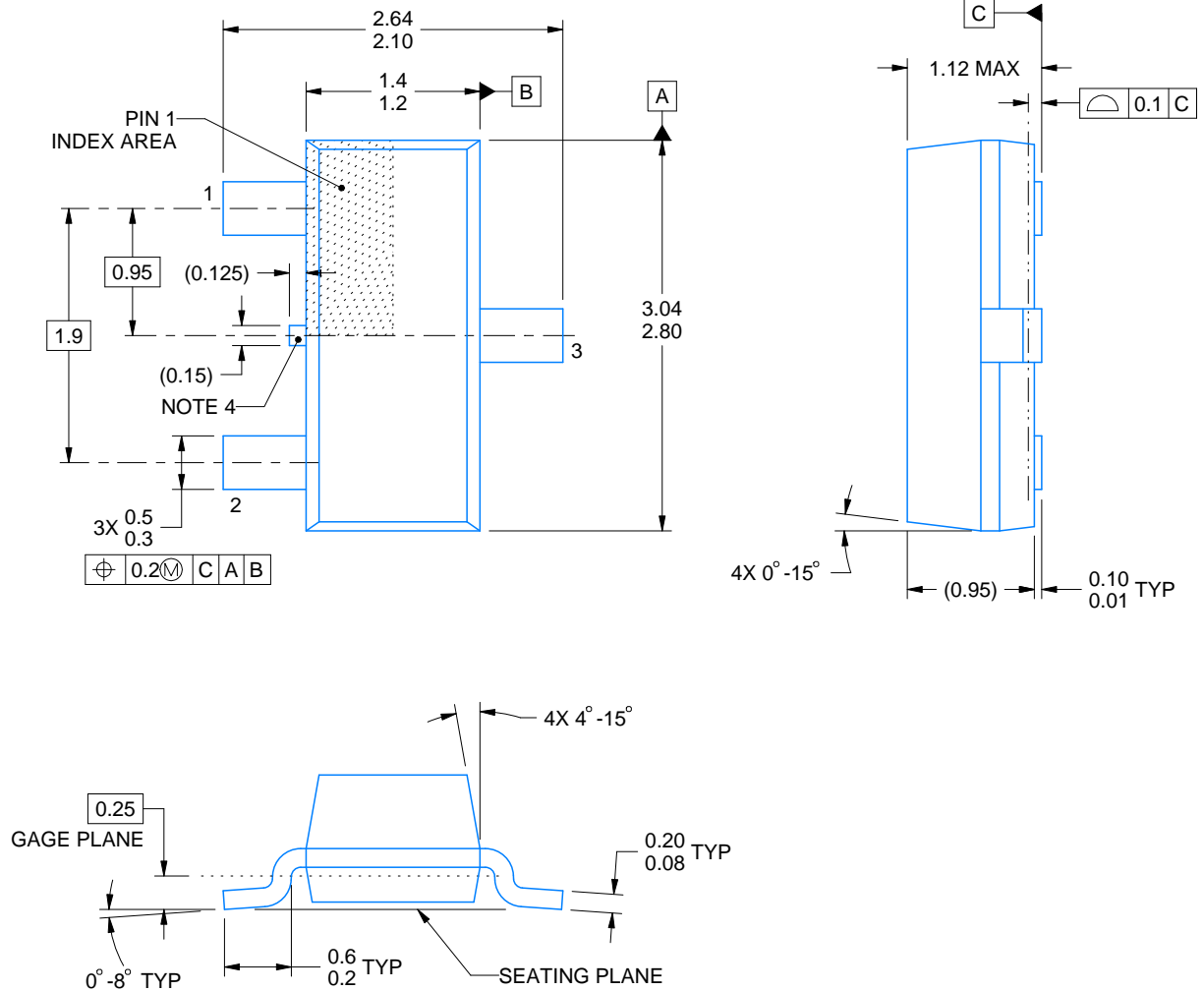


*All dimensions are nominal

Device	Package Type	Package Drawing	Pins	SPQ	Length (mm)	Width (mm)	Height (mm)
LM50BIM3X/NOPB	SOT-23	DBZ	3	3000	208.0	191.0	35.0
LM50CIM3X/NOPB	SOT-23	DBZ	3	3000	208.0	191.0	35.0

DBZ0003A**PACKAGE OUTLINE****SOT-23 - 1.12 mm max height**

SMALL OUTLINE TRANSISTOR



4214838/F 08/2024

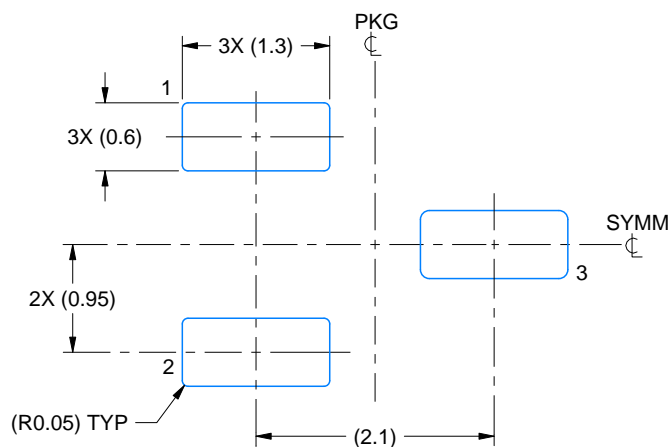
NOTES:

1. All linear dimensions are in millimeters. Any dimensions in parenthesis are for reference only. Dimensioning and tolerancing per ASME Y14.5M.
2. This drawing is subject to change without notice.
3. Reference JEDEC registration TO-236, except minimum foot length.
4. Support pin may differ or may not be present.
5. Body dimensions do not include mold flash, protrusions, or gate burrs. Mold flash, protrusions, or gate burrs shall not exceed 0.25mm per side

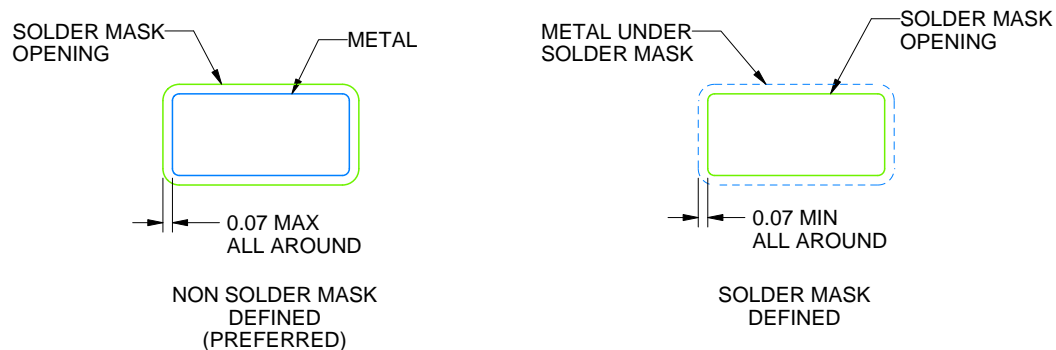
DBZ0003A

SOT-23 - 1.12 mm max height

SMALL OUTLINE TRANSISTOR



LAND PATTERN EXAMPLE
SCALE:15X



SOLDER MASK DETAILS

4214838/F 08/2024

NOTES: (continued)

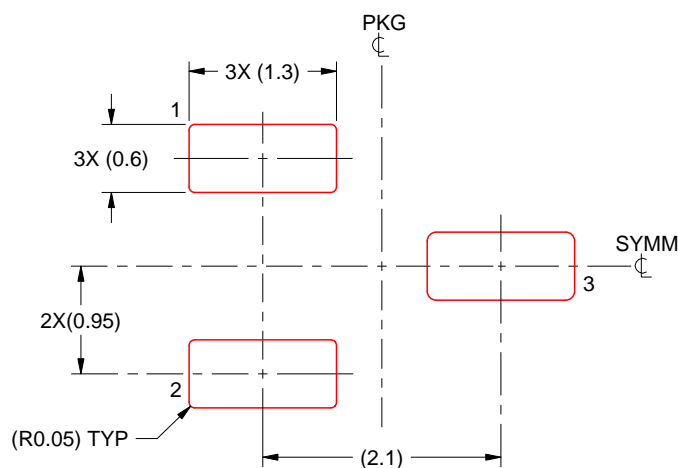
5. Publication IPC-7351 may have alternate designs.
6. Solder mask tolerances between and around signal pads can vary based on board fabrication site.

EXAMPLE STENCIL DESIGN

DBZ0003A

SOT-23 - 1.12 mm max height

SMALL OUTLINE TRANSISTOR



SOLDER PASTE EXAMPLE
BASED ON 0.125 THICK STENCIL
SCALE:15X

4214838/F 08/2024

NOTES: (continued)

7. Laser cutting apertures with trapezoidal walls and rounded corners may offer better paste release. IPC-7525 may have alternate design recommendations.
8. Board assembly site may have different recommendations for stencil design.

IMPORTANT NOTICE AND DISCLAIMER

TI PROVIDES TECHNICAL AND RELIABILITY DATA (INCLUDING DATA SHEETS), DESIGN RESOURCES (INCLUDING REFERENCE DESIGNS), APPLICATION OR OTHER DESIGN ADVICE, WEB TOOLS, SAFETY INFORMATION, AND OTHER RESOURCES "AS IS" AND WITH ALL FAULTS, AND DISCLAIMS ALL WARRANTIES, EXPRESS AND IMPLIED, INCLUDING WITHOUT LIMITATION ANY IMPLIED WARRANTIES OF MERCHANTABILITY, FITNESS FOR A PARTICULAR PURPOSE OR NON-INFRINGEMENT OF THIRD PARTY INTELLECTUAL PROPERTY RIGHTS.

These resources are intended for skilled developers designing with TI products. You are solely responsible for (1) selecting the appropriate TI products for your application, (2) designing, validating and testing your application, and (3) ensuring your application meets applicable standards, and any other safety, security, regulatory or other requirements.

These resources are subject to change without notice. TI grants you permission to use these resources only for development of an application that uses the TI products described in the resource. Other reproduction and display of these resources is prohibited. No license is granted to any other TI intellectual property right or to any third party intellectual property right. TI disclaims responsibility for, and you will fully indemnify TI and its representatives against, any claims, damages, costs, losses, and liabilities arising out of your use of these resources.

TI's products are provided subject to [TI's Terms of Sale](#) or other applicable terms available either on [ti.com](https://www.ti.com) or provided in conjunction with such TI products. TI's provision of these resources does not expand or otherwise alter TI's applicable warranties or warranty disclaimers for TI products.

TI objects to and rejects any additional or different terms you may have proposed.

Mailing Address: Texas Instruments, Post Office Box 655303, Dallas, Texas 75265
Copyright © 2025, Texas Instruments Incorporated