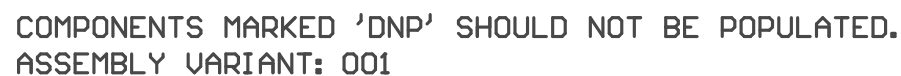
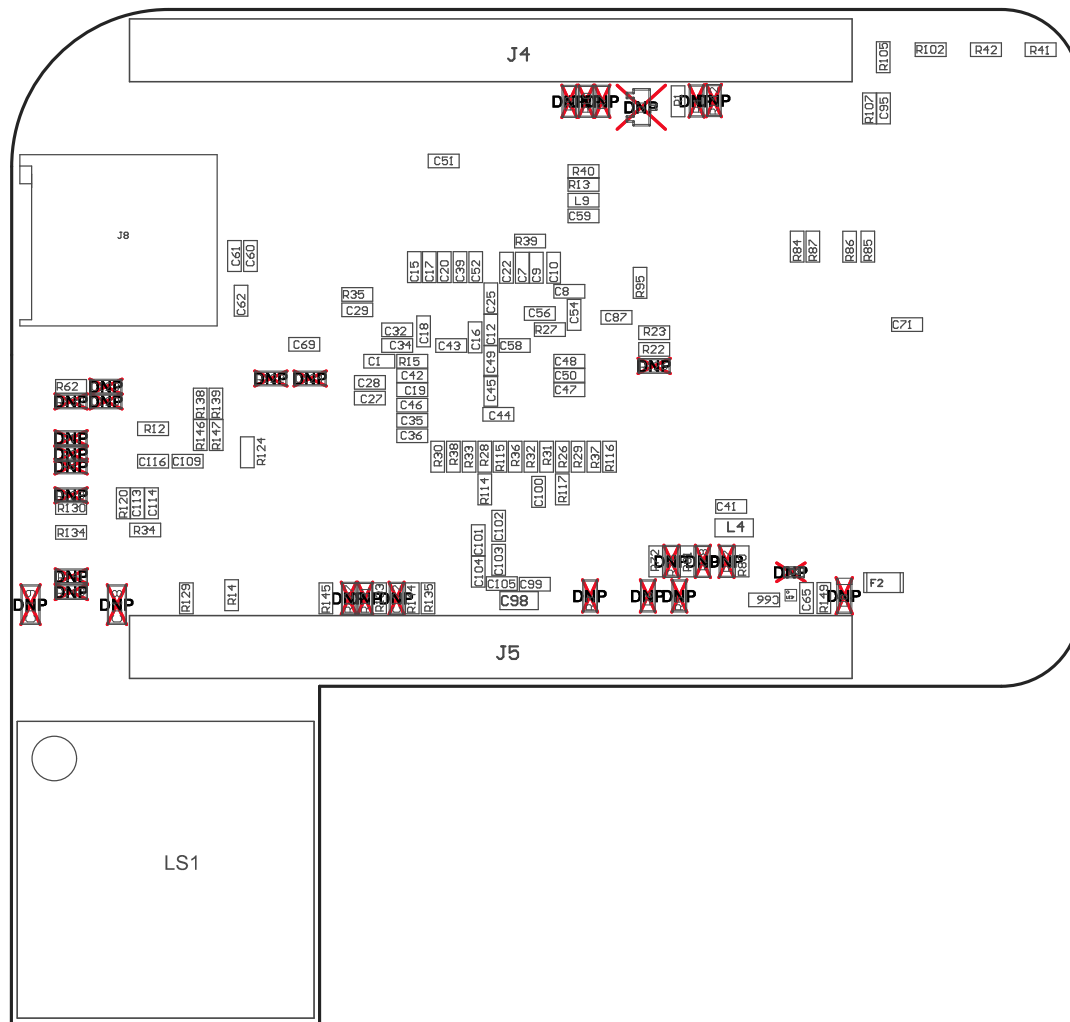


Z24 ■ These assemblies must comply with workmanship standards IPC-A-610 Class 2, unless otherwise specified.



PCB VIEWED FROM TOP SIDE	BOARD #: TIDA-01589	REV: E2	SUN REV: Not In VersionControl
M5 Assembly Top	TID #: 01589		
PLOT NAME = Top Assembly Drawing	GENERATED : 10/16/2018 5:51:39 PM		TEXAS INSTRUMENTS



COMPONENTS MARKED 'DNP' SHOULD NOT BE POPULATED.
ASSEMBLY VARIANT: 001

PCB VIEWED FROM BOTTOM SIDE	BOARD #: TIDA-01589	REV: E2	SUN REV: Not In VersionControl
M6 Assembly Bottom	TID #: 01589		
PLOT NAME = Bottom Assembly Drawing	GENERATED : 10/16/2018 5:51:41 PM		TEXAS INSTRUMENTS