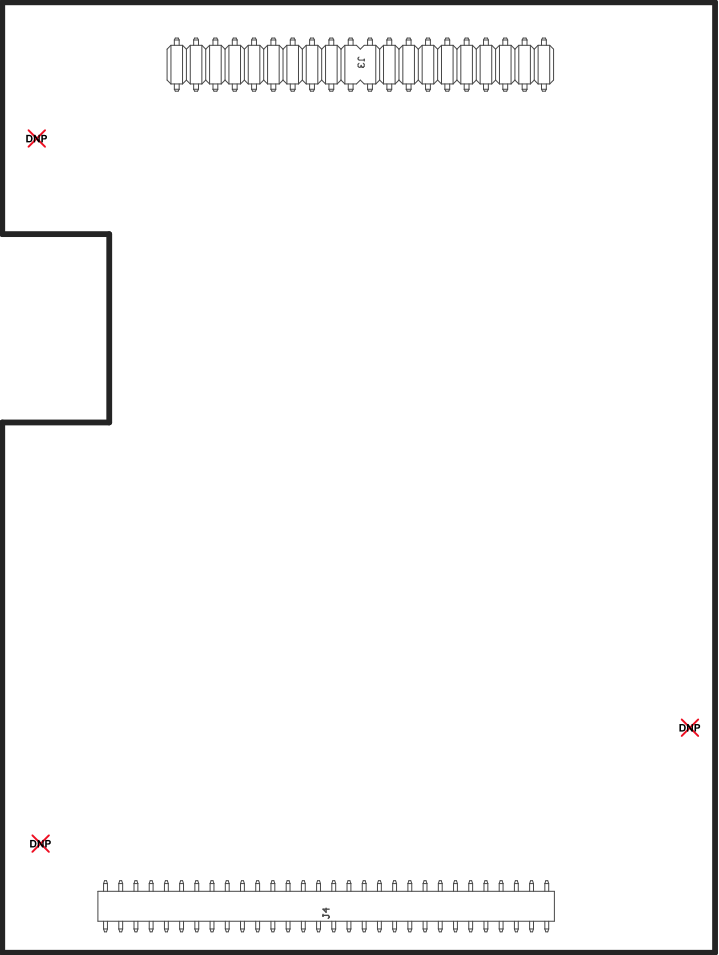


Z22 ■ These assemblies are ESD sensitive, ESD precautions shall be observed.
Z23 ■ These assemblies must be clean and free from flux and all contaminants. Use of no clean flux is not acceptable.
Z24 ■ These assemblies must comply with workmanship standards IPC-A-610 Class 2, unless otherwise specified.

COMPONENTS MARKED 'DNP' SHOULD NOT BE POPULATED.
ASSEMBLY VARIANT: 001

PCB VIEWED FROM TOP SIDE	BOARD #:	TIDA-010016	REV:	E3	SUN REV:	Not In VersionControl
	TID #:	N/A				
PLOT NAME = Top Assembly Drawing	GENERATED :	5/18/2018	9:24:37 AM	TEXAS INSTRUMENTS		



COMPONENTS MARKED 'DNP' SHOULD NOT BE POPULATED.
ASSEMBLY VARIANT: 001

PCB VIEWED FROM BOTTOM SIDE	BOARD #:	TIDA-010016	REV:	E3	SUN REV:	Not In VersionControl
	TID #:	N/A				
PLOT NAME = Bottom Assembly Drawing	GENERATED :	5/18/2018	9:24:38 AM		TEXAS INSTRUMENTS	