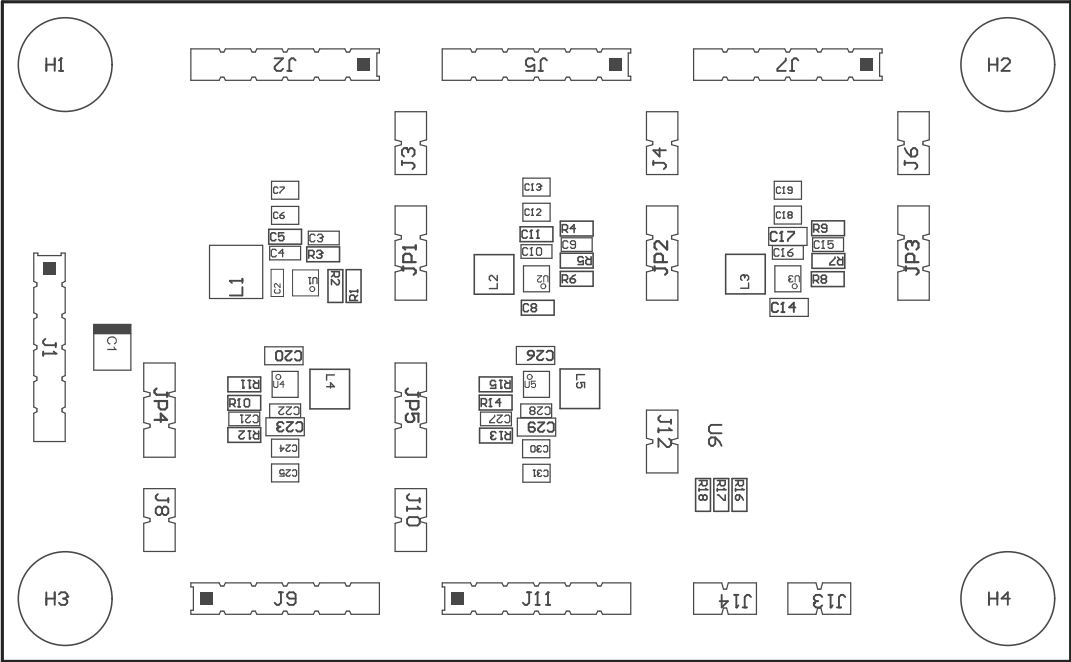
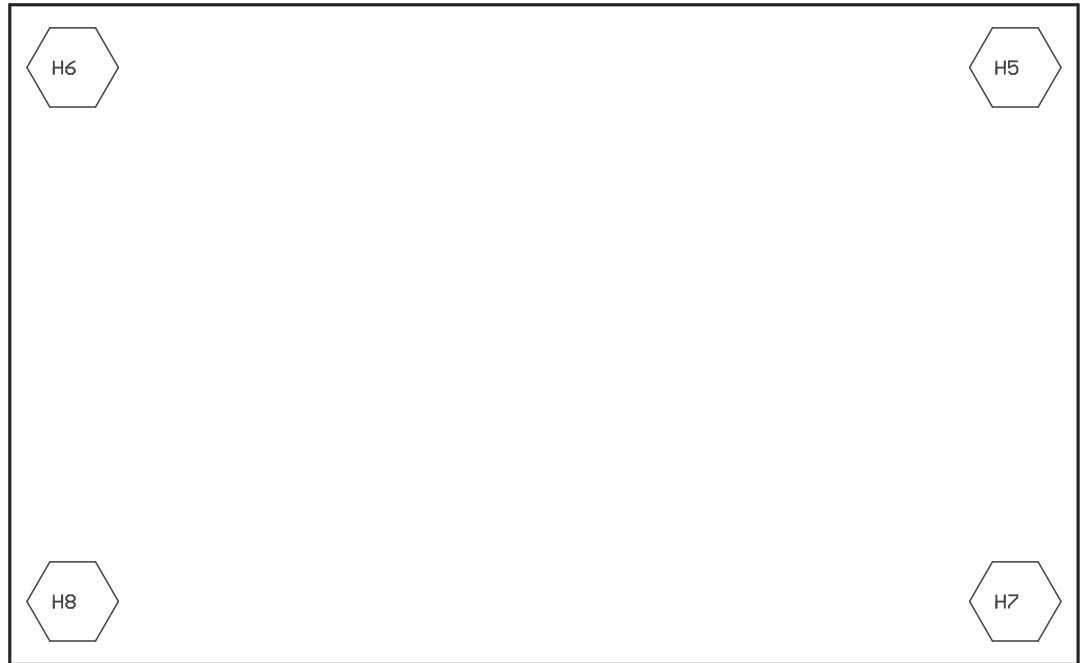


ZZ2 ■ These assemblies are ESD sensitive, ESD precautions shall be observed.
 ZZ3 ■ These assemblies must be clean and free from flux and all contaminants. Use of no clean flux is not acceptable.
 ZZ4 ■ These assemblies must comply with workmanship standards IPC-A-610 Class 2, unless otherwise specified.



COMPONENTS MARKED 'DNP' SHOULD NOT BE POPULATED.
 ASSEMBLY VARIANT: [No Variations]

PCB VIEWED FROM TOP SIDE	BOARD #: TIDA-01416	REV: A	SVN REV: Not In VersionControl
	TID #: TIDA-01416		
PLOT NAME = Top Assembly Drawing	GENERATED : 1/10/2018 12:30:11 PM	TEXAS INSTRUMENTS	



COMPONENTS MARKED 'DNP' SHOULD NOT BE POPULATED.
ASSEMBLY VARIANT: [No Variations]

PCB VIEWED FROM BOTTOM SIDE	BOARD #: TIDA-01416	REV: A	SVN REV: Not In VersionControl
	TID #: TIDA-01416		
PLOT NAME = Bottom Assembly Drawing	GENERATED : 1/10/2018 12:30:12 PM		TEXAS INSTRUMENTS