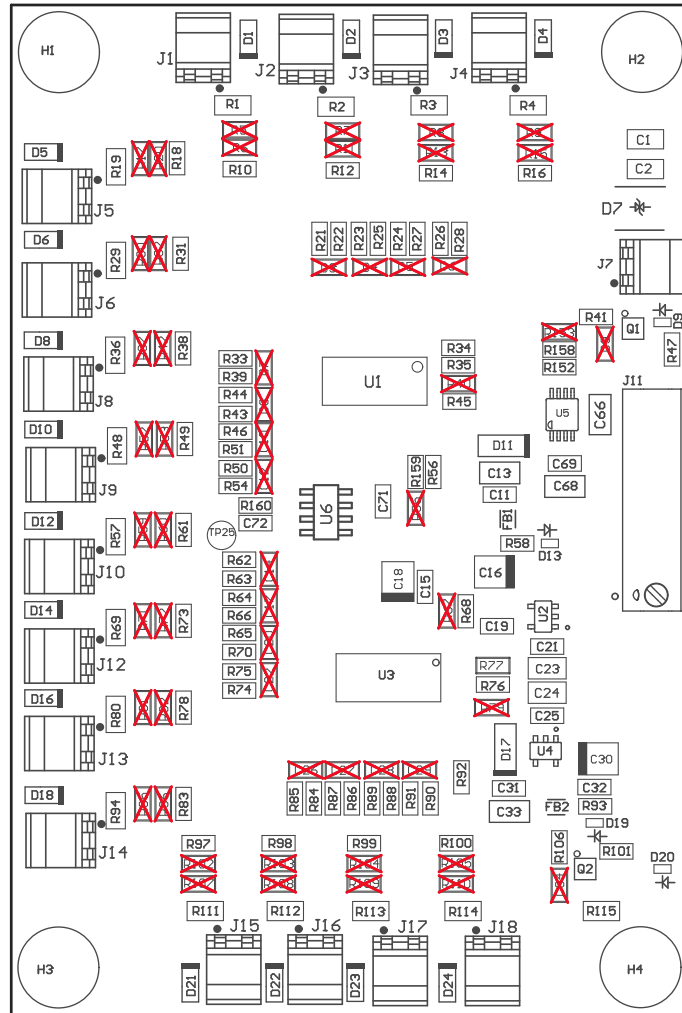
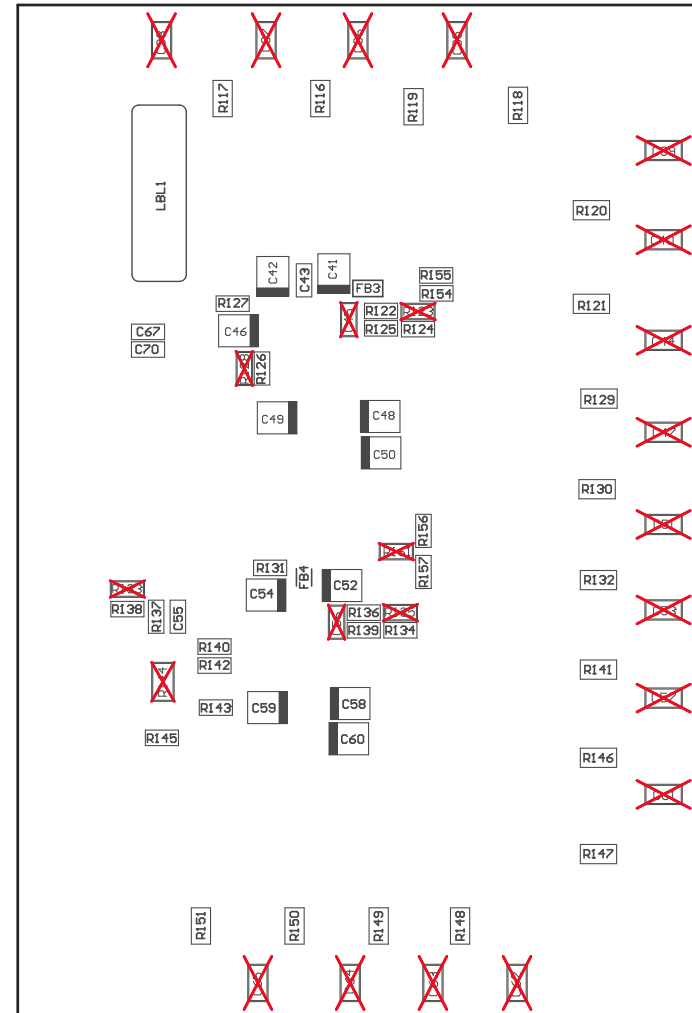


- Z21 ■ Install label in silkscreened box after final wash. Text shall be 8 pt font. Text shall be per the Label Table in the PDF schematic.
- Z22 ■ These assemblies must be clean and free from flux and all contaminants. Use of no clean flux is not acceptable.
- Z23 ■ These assemblies are ESD sensitive, ESD precautions shall be observed.
- Z24 ■ These assemblies must comply with workmanship standards IPC-A-610 Class 2, unless otherwise specified.



COMPONENTS MARKED 'DNP' SHOULD NOT BE POPULATED.
ASSEMBLY VARIANT: 001

PCB VIEWED FROM TOP SIDE	BOARD #: TIDA-01576_DUAL_SDO	REV: E2	SUN REV: Not In VersionControl
IGNORE -> Assembly Top			
PLOT NAME = Top Assembly Drawing	GENERATED : 10/13/2017 4:27:04 PM	TEXAS INSTRUMENTS	



COMPONENTS MARKED 'DNP' SHOULD NOT BE POPULATED.
 ASSEMBLY VARIANT: 001

PCB VIEWED FROM BOTTOM SIDE	BOARD #: TIDA-01576_DUAL_SDO	REV: E2	SUN REV: Not In VersionControl
	IGNORE -> Assembly Bottom		
PLOT NAME =Bottom Assembly Drawing	GENERATED : 10/13/2017 4:27:06 PM	TEXAS INSTRUMENTS	