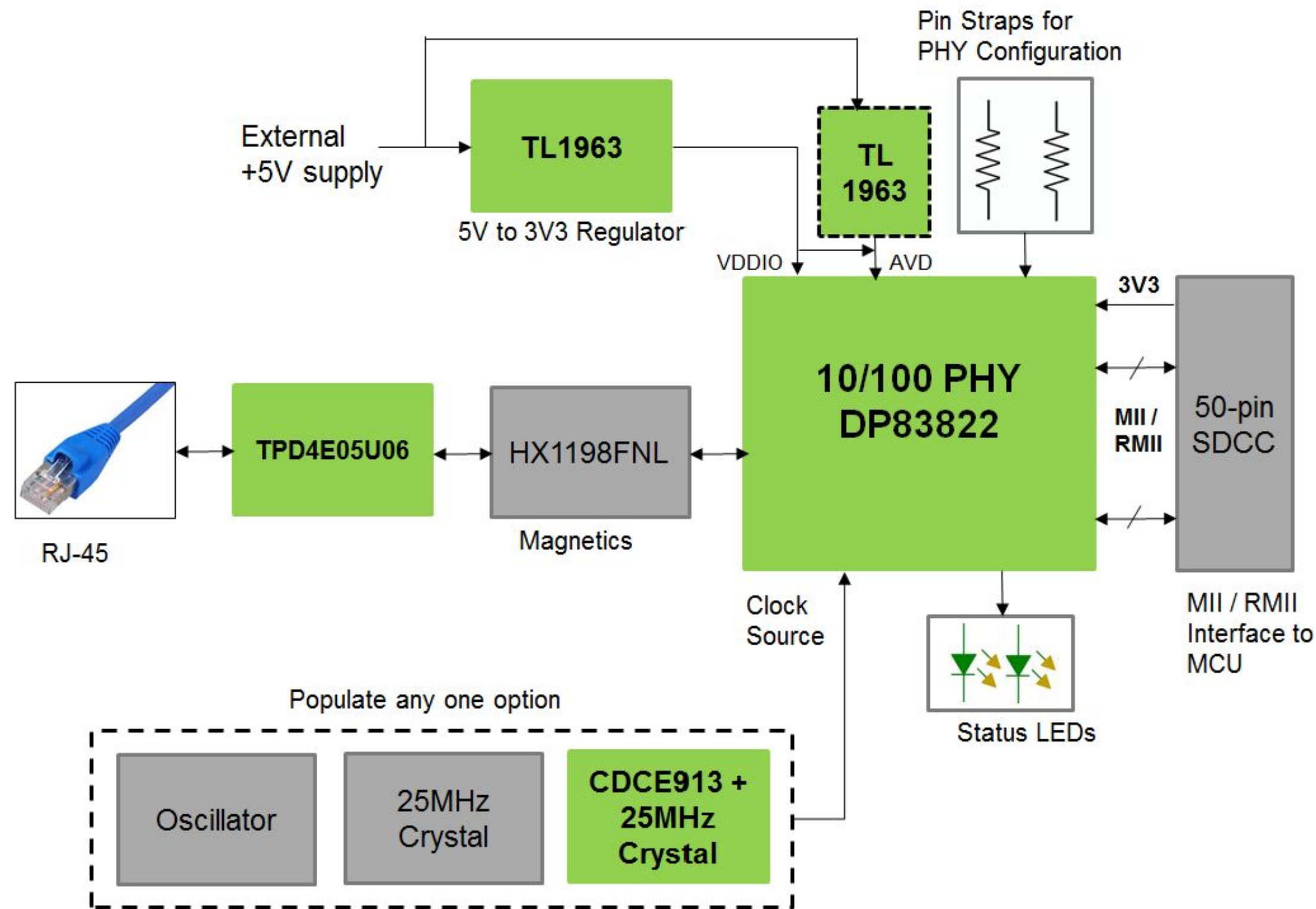


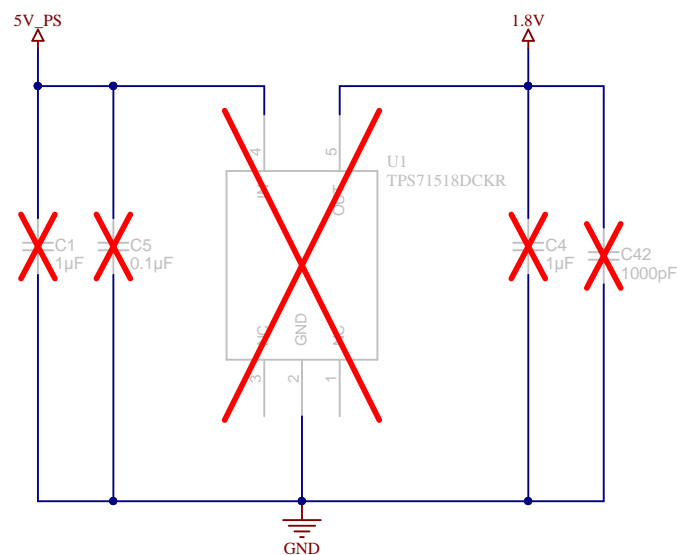
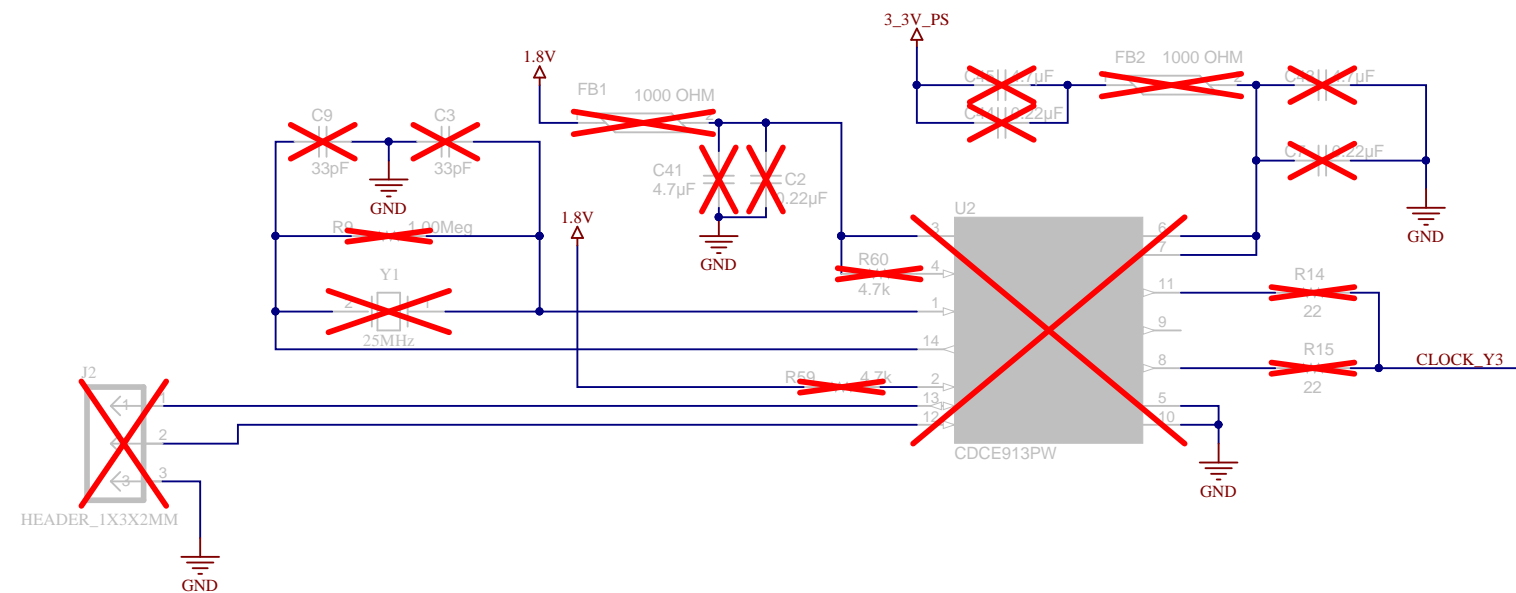
Revision History				
Rev	ECN #	Approved Date	Approved by	Notes
N/A	N/A	N/A	N/A	N/A

Page 2	Block Diagram
Page 3	10/100 ETHERNET PHY
Page 4	CLOCK GENERATOR
Page 5	RJ45 CONNECTOR
Page 6	MII / RMII INTERFACE
Page 7	PHY CONFIGURATION
Page 8	POWER SUPPLY
Page 9	Mounting holes, Fiducials Marking


DP83822 100BASETX and 10BASE-Te PHY based Industrial Ethernet Brick with Copper interface



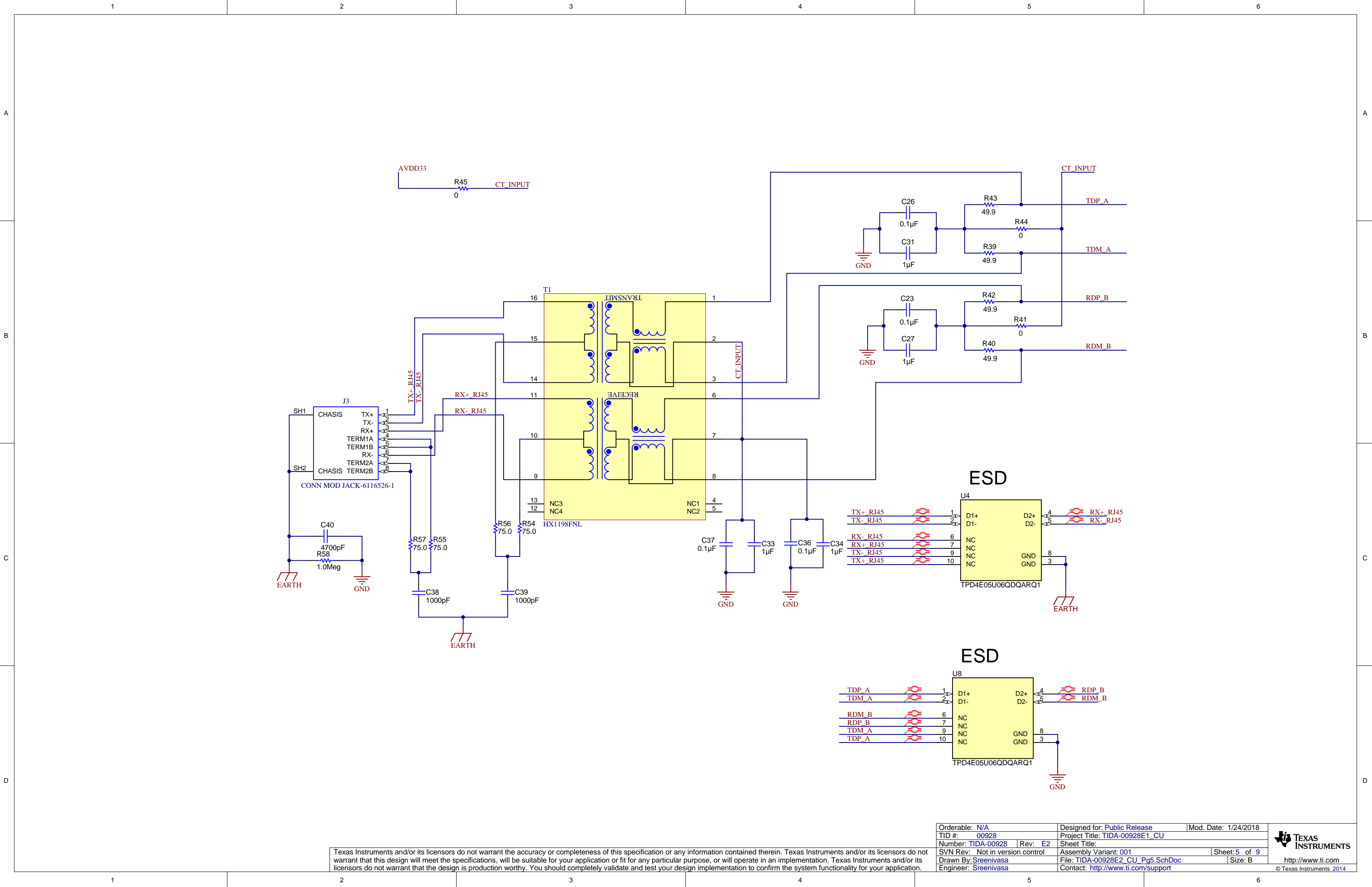




Texas Instruments and/or its licensors do not warrant the accuracy or completeness of this specification or any information contained therein. Texas Instruments and/or its licensors do not warrant that this design will meet the specifications, will be suitable for your application or fit for any particular purpose, or will operate in an implementation. Texas Instruments and/or its licensors do not warrant that the design is production worthy. You should completely validate and test your design implementation to confirm the system functionality for your application.

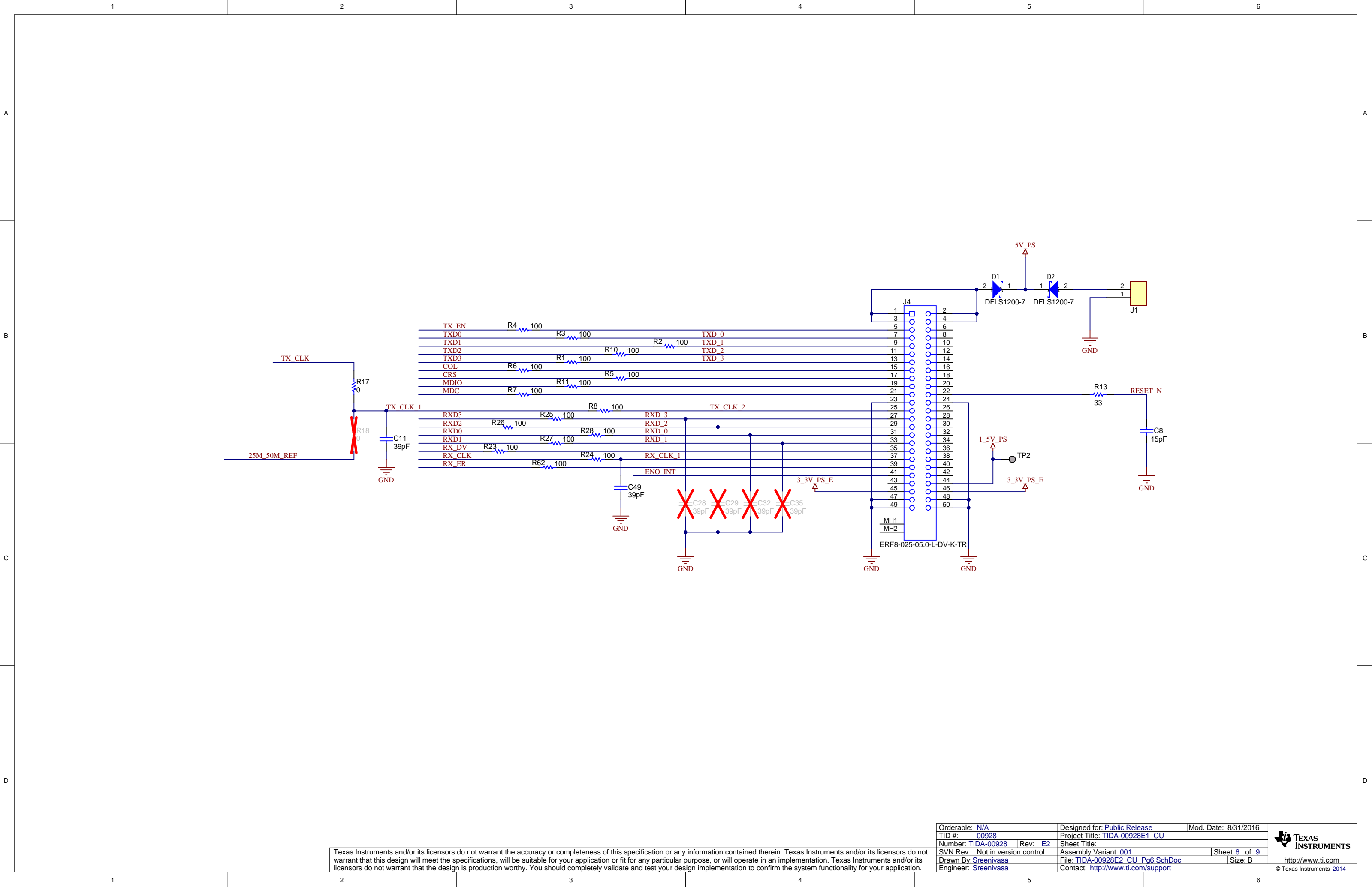
Orderable: N/A	Designed for: Public Release	Mod. Date: 1/24/2018	 http://www.ti.com © Texas Instruments 2014
TID #: 00928	Project Title: TIDA-00928E1_CU		
Number: TIDA-00928 Rev: E2	Sheet Title:		
SVN Rev: Not in version control	Assembly Variant: 001	Sheet: 4 of 9	
Drawn By: Sreenivasa	File: TIDA-00928E2_CU_Pg4.SchDoc	Size: B	
Engineer: Sreenivasa	Contact: http://www.ti.com/support		





Texas Instruments and/or its licensors do not warrant the accuracy or completeness of this specification or any information contained therein. Texas Instruments and/or its licensors do not warrant that this design will meet the specifications, will be suitable for your application or fit for any particular purpose, or will operate in an implementation. Texas Instruments and/or its licensors do not warrant that the design is production worthy. You should completely validate and test your design implementation to confirm the system functionality for your application.

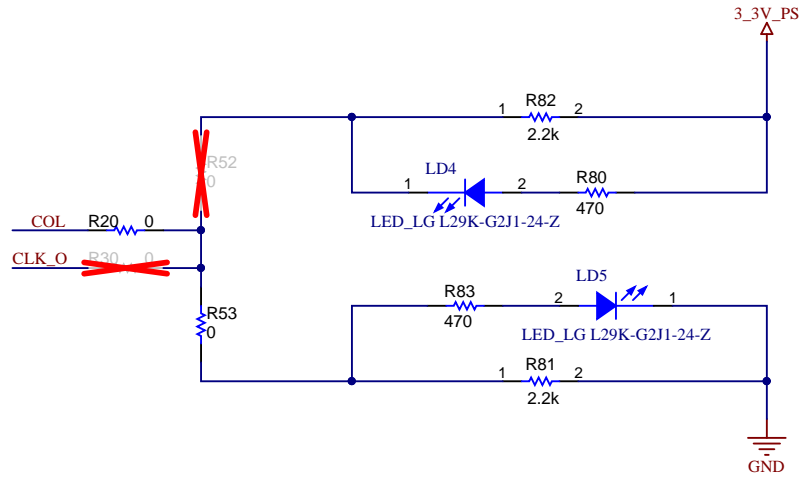
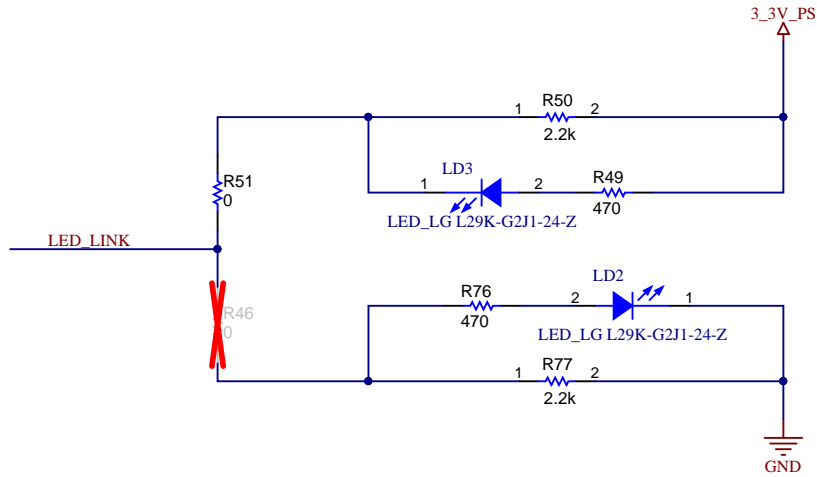
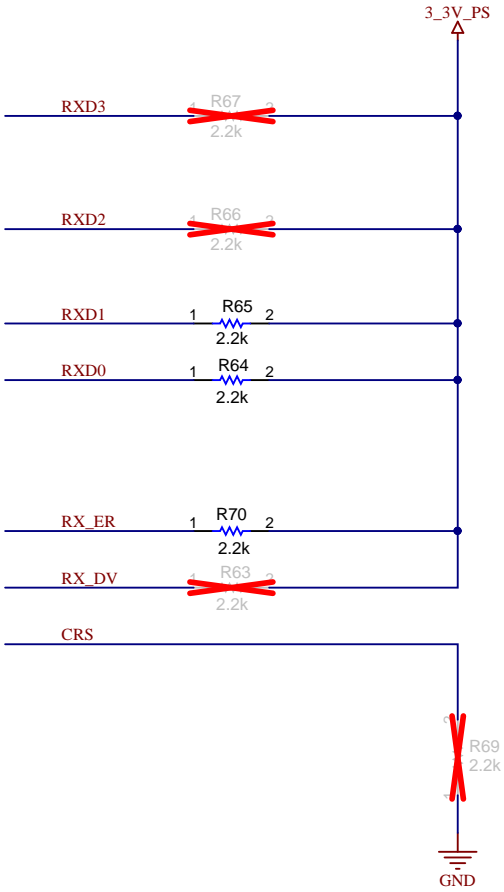
Orderable: N/A	Designed for: Public Release	Mod. Date: 1/24/2018
TID #: 00928	Project Title: TIDA-00928E1_CU	
Number: TIDA-00928	Rev: E2	Sheet Title:
SVN Rev: Not in version control	Assembly Variant: 001	Sheet: 5 of 9
Drawn By: Sreenivasa	File: TIDA-00928E2_CU_Pg5.SchDoc	Size: B
Engineer: Sreenivasa	Contact: http://www.ti.com/support	



Texas Instruments and/or its licensors do not warrant the accuracy or completeness of this specification or any information contained therein. Texas Instruments and/or its licensors do not warrant that this design will meet the specifications, will be suitable for your application or fit for any particular purpose, or will operate in an implementation. Texas Instruments and/or its licensors do not warrant that the design is production worthy. You should completely validate and test your design implementation to confirm the system functionality for your application.

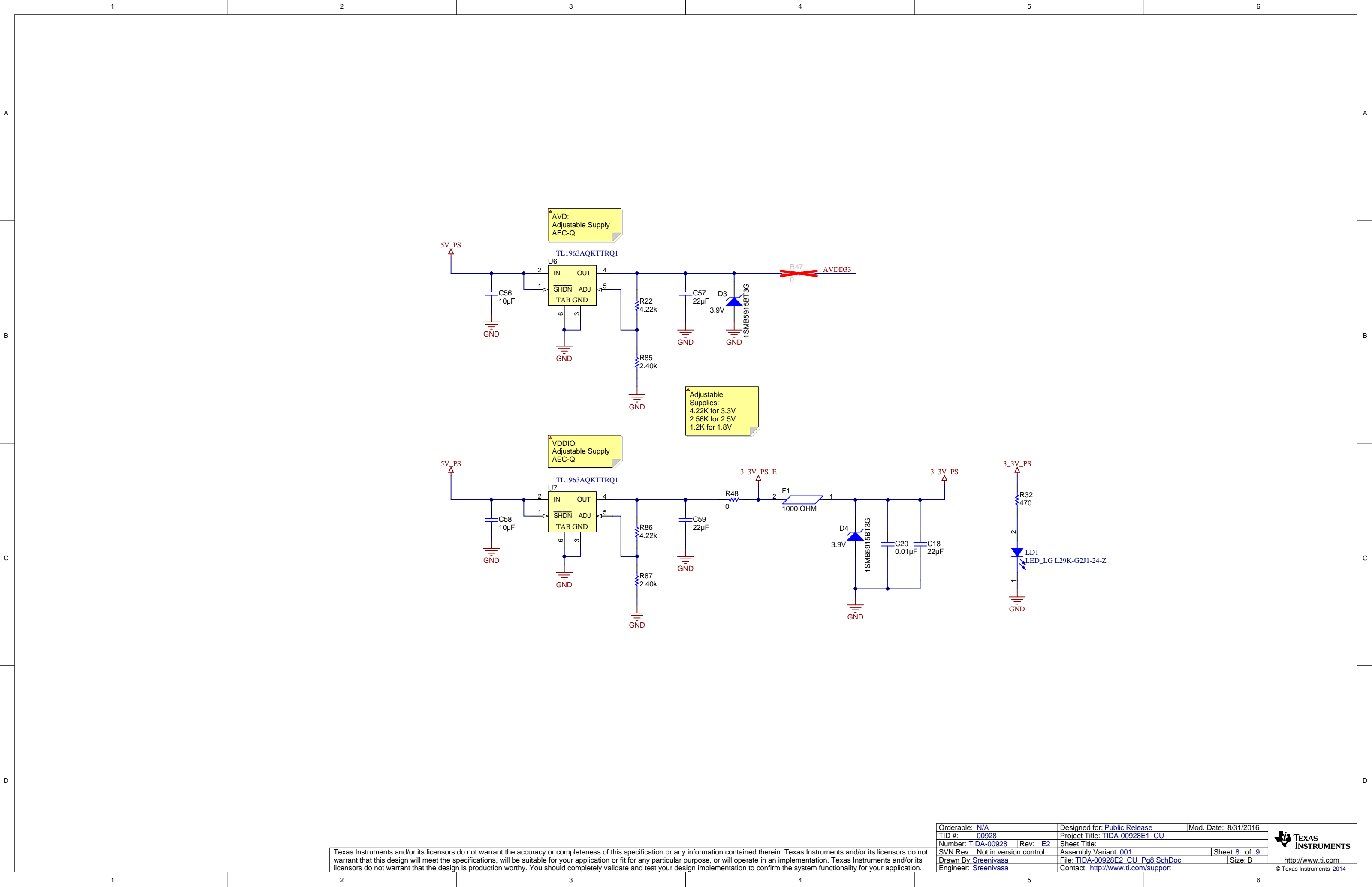
Orderable: N/A		Designed for: Public Release		Mod. Date: 8/31/2016	
TID #: 00928		Project Title: TIDA-00928E1_CU			
Number: TIDA-00928		Rev: E2		Sheet: 6 of 9	
SVN Rev: Not in version control		Assembly Variant: 001		Size: B	
Drawn By: Sreenivasa		File: TIDA-00928E2_CU_Pg6.SchDoc			
Engineer: Sreenivasa		Contact: http://www.ti.com/support			

CONFIGURATION PINS



Texas Instruments and/or its licensors do not warrant the accuracy or completeness of this specification or any information contained therein. Texas Instruments and/or its licensors do not warrant that this design will meet the specifications, will be suitable for your application or fit for any particular purpose, or will operate in an implementation. Texas Instruments and/or its licensors do not warrant that the design is production worthy. You should completely validate and test your design implementation to confirm the system functionality for your application.

Orderable: N/A		Designed for: Public Release		Mod. Date: 1/24/2018	
TID #: 00928		Project Title: TIDA-00928E1_CU			
Number: TIDA-00928		Rev: E2		Sheet Title:	
SVN Rev: Not in version control		Assembly Variant: 001		Sheet: 7 of 9	
Drawn By: Sreenivasa		File: TIDA-00928E2_CU_Pg7.SchDoc		Size: B	
Engineer: Sreenivasa		Contact: http://www.ti.com/support			



Texas Instruments and/or its licensors do not warrant the accuracy or completeness of this specification or any information contained therein. Texas Instruments and/or its licensors do not warrant that this design will meet the specifications, will be suitable for your application or fit for any particular purpose, or will operate in an implementation. Texas Instruments and/or its licensors do not warrant that the design is production worthy. You should completely validate and test your design implementation to confirm the system functionality for your application.

Orderable: N/A		Designed for: Public Release	Mod. Date: 8/31/2016
TID #: 00928		Project Title: TIDA-00928E1_CU	
Number: TIDA-00928	Rev: E2	Sheet Title:	
SVN Rev: Not in version control		Assembly Variant: 001	Sheet: 8 of 9
Drawn By: Sreenivasa		File: TIDA-00928E2_CU_Pg8.SchDoc	Size: B
Engineer: Sreenivasa		Contact: http://www.ti.com/support	

