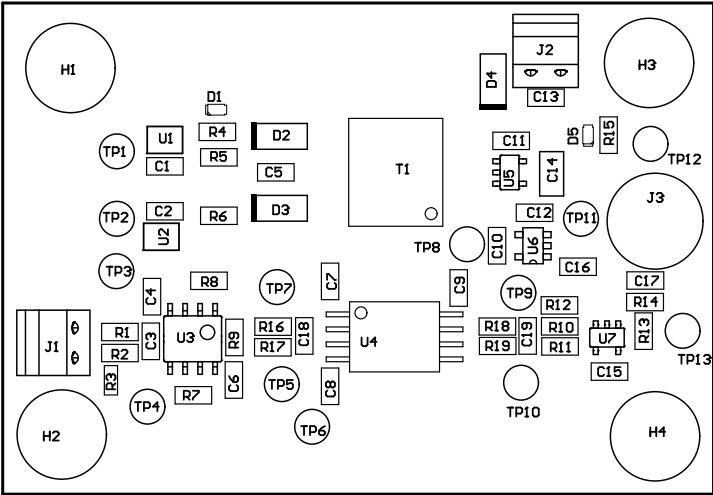


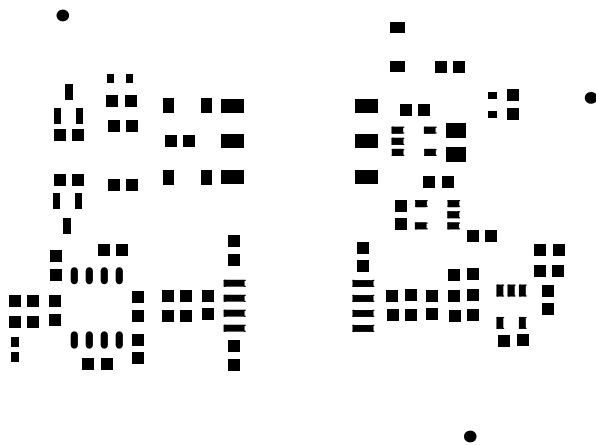
ZZ1 ■ These assemblies are ESD sensitive, ESD precautions shall be observed.  
ZZ3 ■ These assemblies must be clean and free from flux and all contaminants. Use of no clean flux is not acceptable.  
ZZ2 ■ These assemblies must comply with workmanship standards IPC-A-610 Class 2, unless otherwise specified.



COMPONENTS MARKED 'DNP' SHOULD NOT BE POPULATED.

ASSEMBLY VARIANT: [No Variations]

ALL ARTWORK VIEWED FROM TOP SIDE	BOARD #:TIDA-00912	REV: E1	SUN REV: Not In VersionControl
LAYER NAME = M5 Assembly Top	TID #: TIDA-00912		
PLOT NAME = Top Assembly Drawing	GENERATED : 5/16/2016 4:02:22 PM	TEXAS INSTRUMENTS	

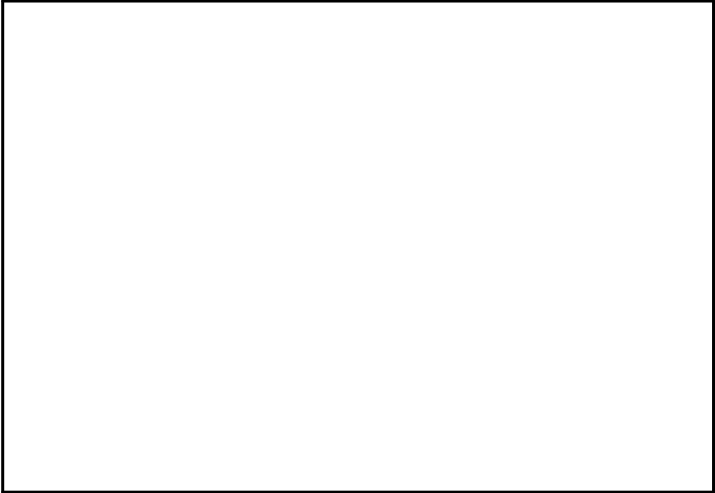


ALL ARTWORK VIEWED FROM TOP SIDE	BOARD #: TIDA-00912	REV: E1	SUN REV: Not In VersionControl
LAYER NAME = Top Paste	TID #:TIDA-00912		
PLOT NAME =Top Paste	GENERATED : 5/16/2016 4:02:23 PM		TEXAS INSTRUMENTS

PLT NAME =	Bottom Assembly Drawing	GENERATED : 2\16\2016 4:02:23 PM
LAYER NAME =	M6 Assembly Bottom	TID # TIDA-00812 IGNORE ->
PCB VIEWED FROM BOTTOM SIDE	BOARD # TIDA-00812	REV: E1 SVN REV: Not in version control

ASSEMBLY VARIANTS:  
[No Variations]

COMPONENTS MARKED 'DNP' SHOULD NOT BE POPULATED.





ALL ARTWORK VIEWED FROM TOP SIDE	BOARD #: TIDA-00912	REV: E1	SUN REV: Not In VersionControl
LAYER NAME = M1 Board Outline	TID #:TIDA-00912		
PLOT NAME =Outline	GENERATED : 5/16/2016 4:02:23 PM		TEXAS INSTRUMENTS