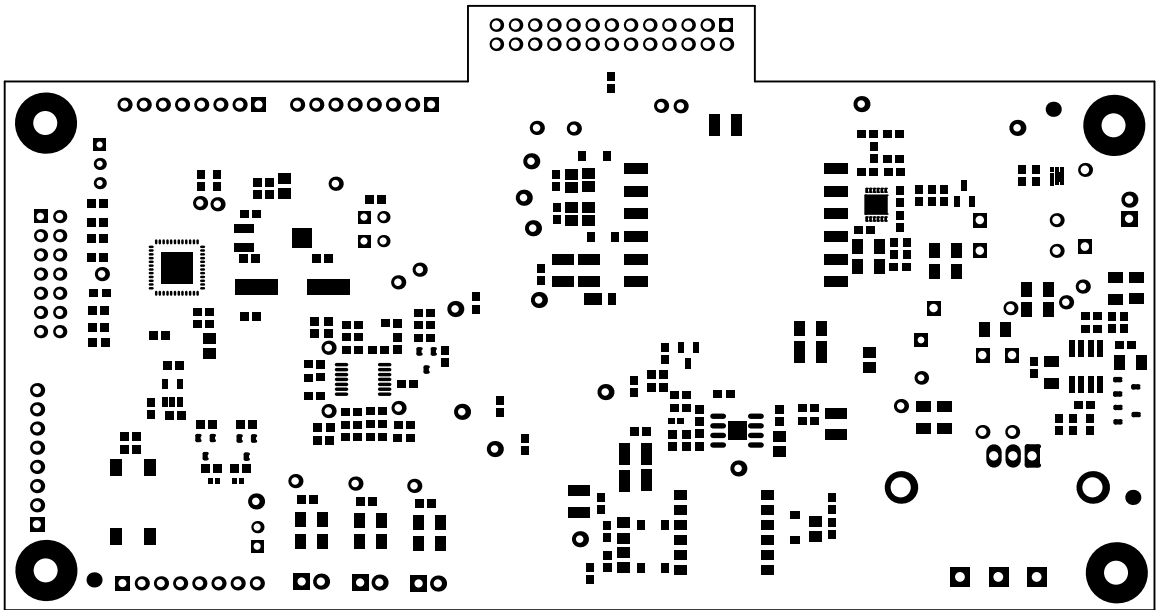
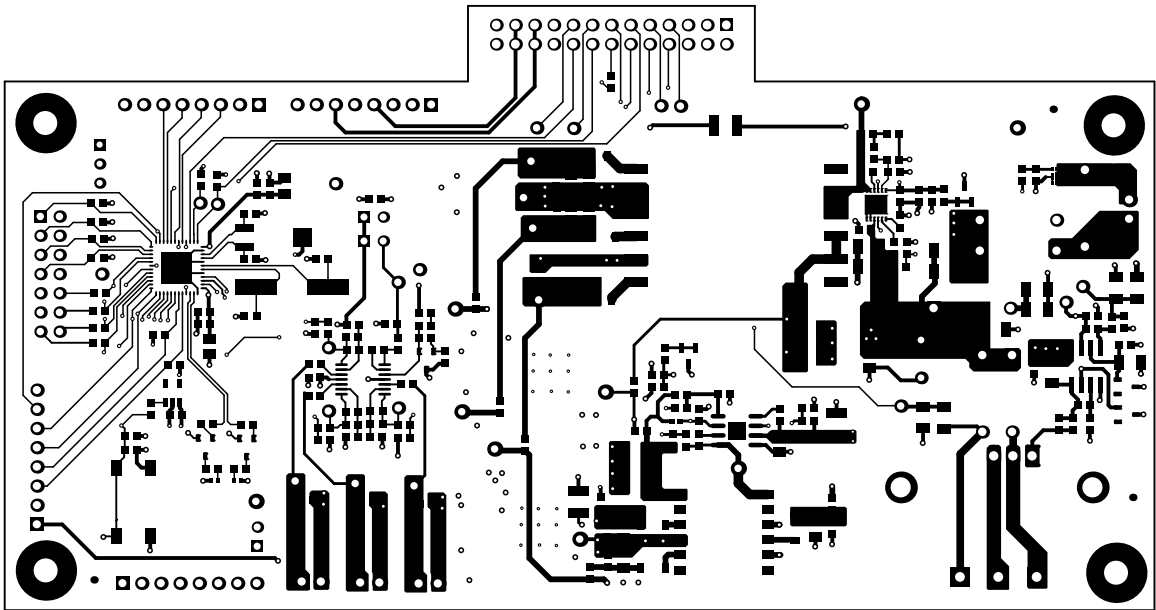


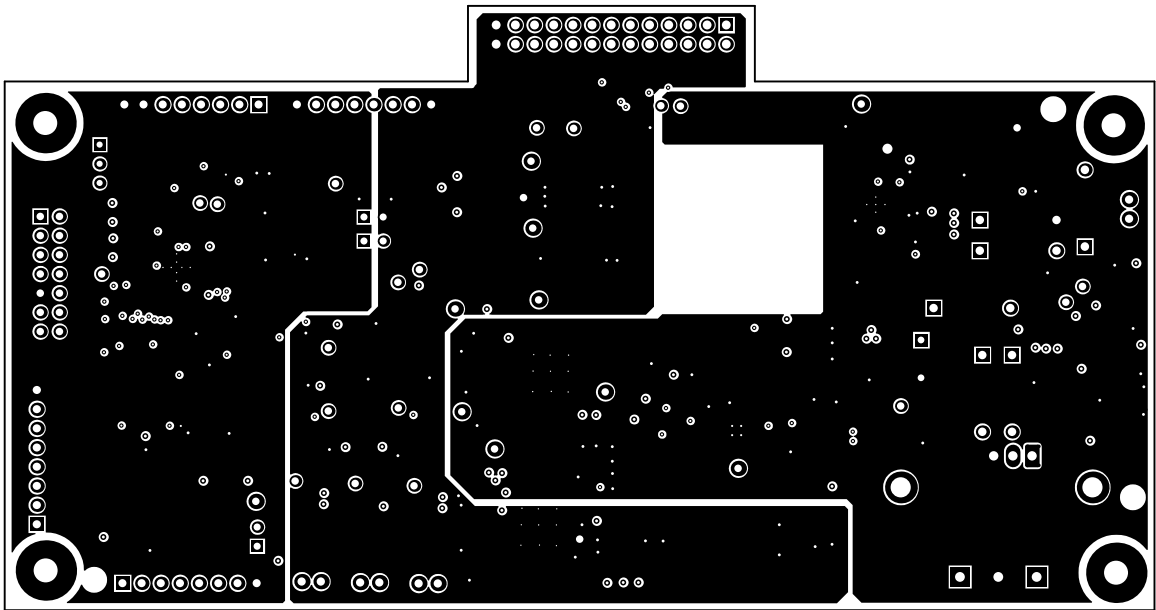
ALL ARTWORK VIEWED FROM TOP SIDE	BOARD #:	TIDA-00661-A	REV: E2	SUN REV: Not In VersionControl
LAYER NAME = Top Overlay				
PLOT NAME = Top Overlay	GENERATED	: 12/8/2015	2:59:47 PM	TEXAS INSTRUMENTS



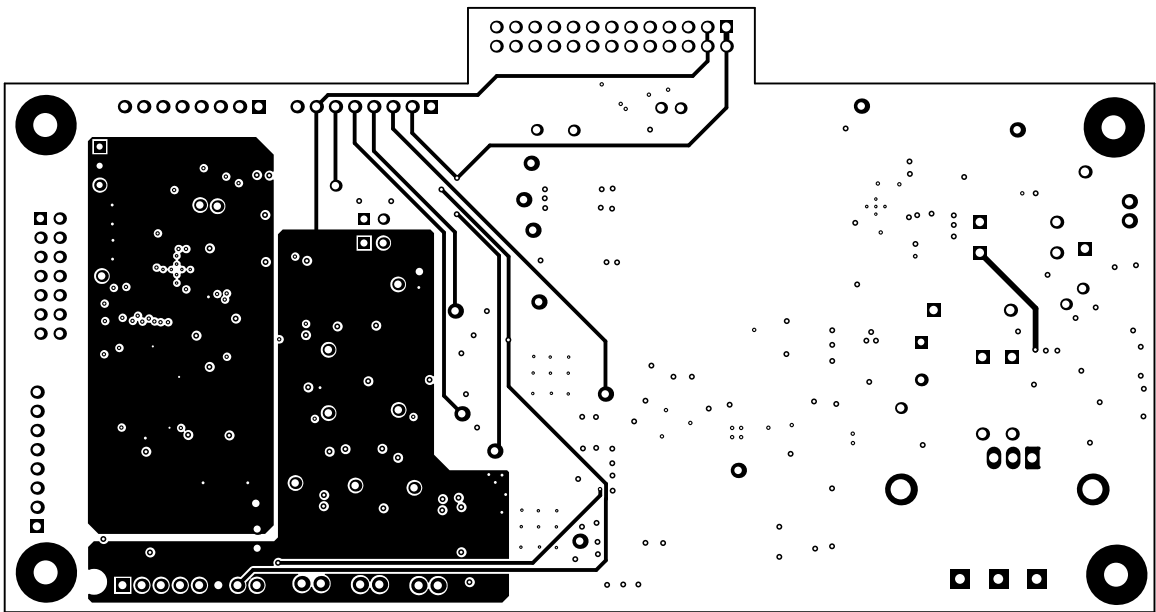
ALL ARTWORK VIEWED FROM TOP SIDE	BOARD #:	TIDA-00661-A	REV:	E2	SUN REV:	Not In VersionControl
LAYER NAME =	Top Solder					
PLOT NAME =	Top Solder Mask		GENERATED	: 12/8/2015	2:59:48 PM	TEXAS INSTRUMENTS



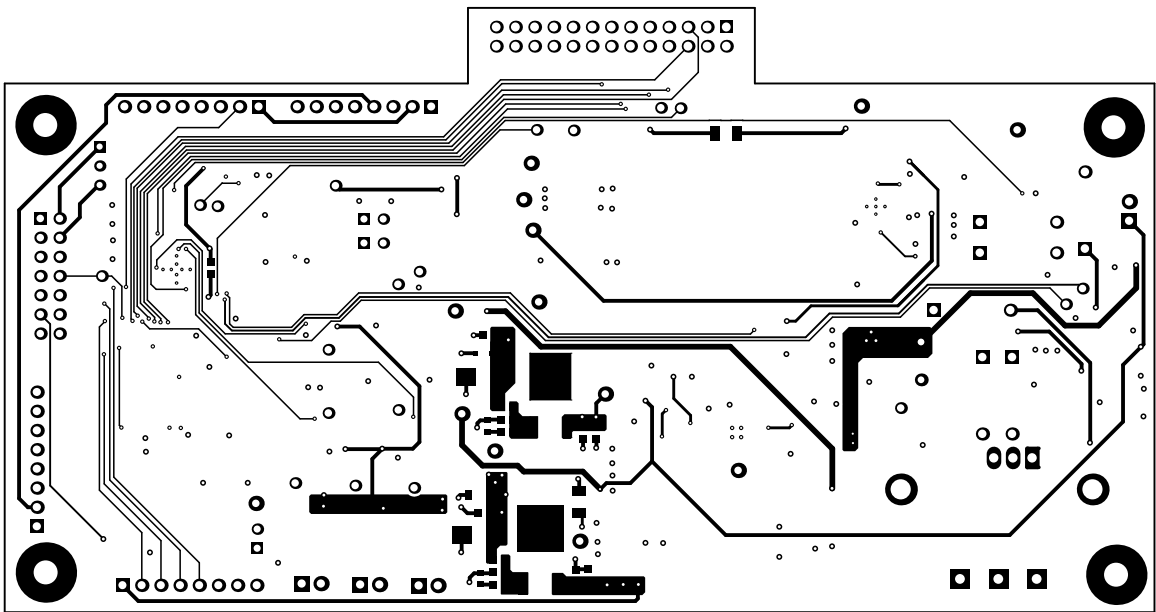
ALL ARTWORK VIEWED FROM TOP SIDE	BOARD #: TIDA-00661-A	REV: E2	SUN REV: Not In VersionControl
LAYER NAME = Top Layer			
PLOT NAME = Top Layer	GENERATED : 12/8/2015 2:59:48 PM	TEXAS INSTRUMENTS	



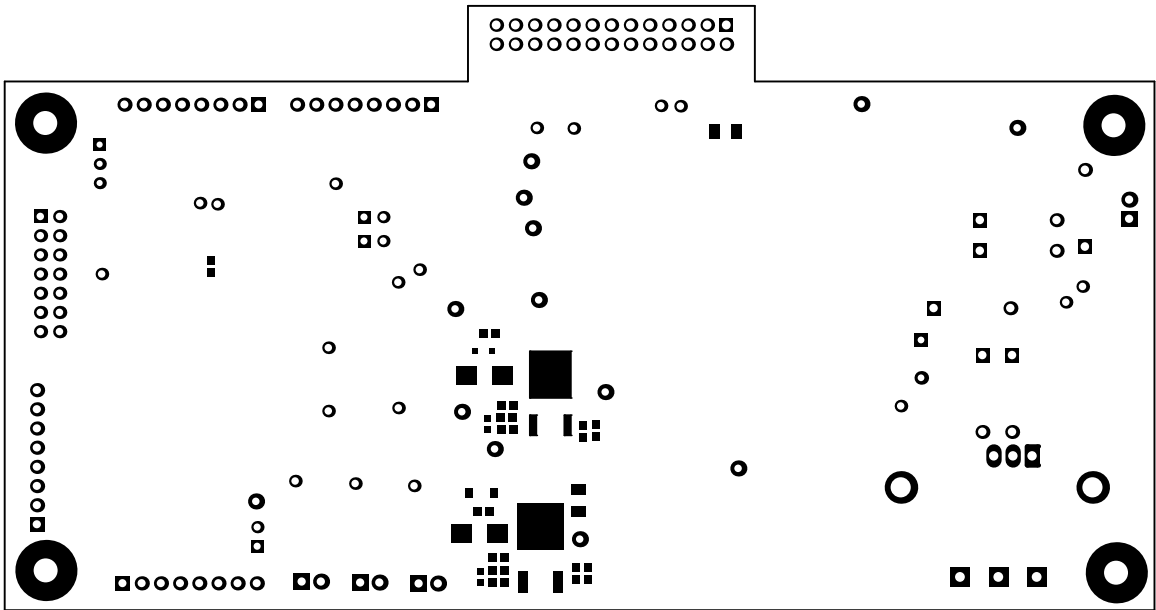
ALL ARTWORK VIEWED FROM TOP SIDE	BOARD #:	TIDA-00661-A	REV:	E2	SUN REV:	Not In VersionControl
LAYER NAME =	GND					
PLOT NAME =	GND		GENERATED	: 12/8/2015 2:59:49 PM	TEXAS INSTRUMENTS	



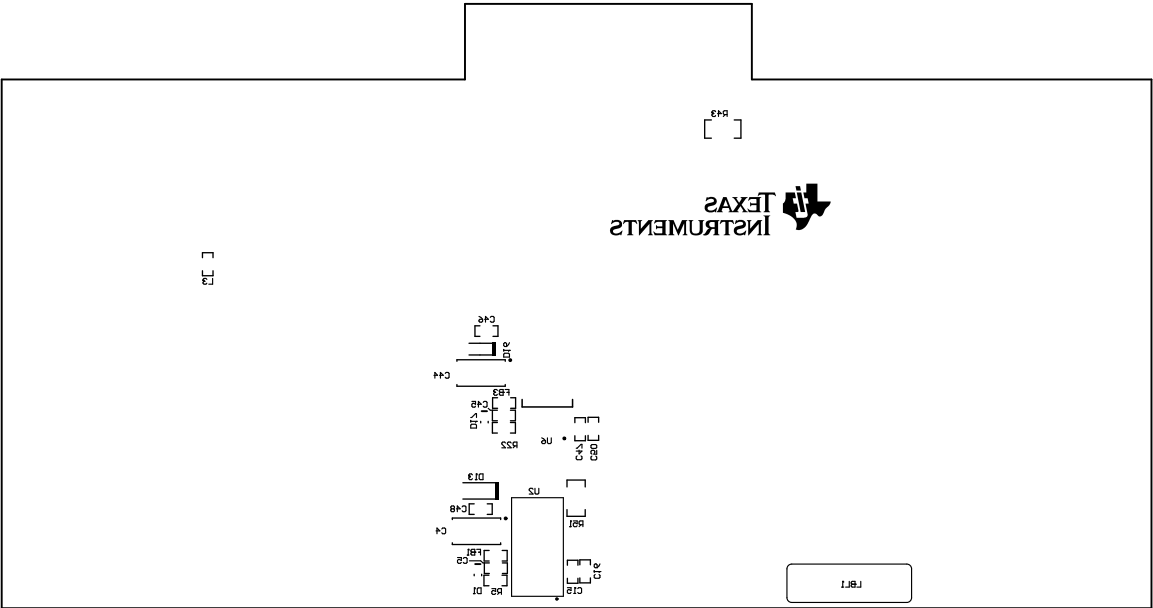
ALL ARTWORK VIEWED FROM TOP SIDE	BOARD #:	TIDA-00661-A	REV:	E2	SUN REV:	Not In VersionControl
LAYER NAME =	PWR					
PLOT NAME =	PWR		GENERATED	: 12/8/2015 2:59:49 PM	TEXAS INSTRUMENTS	



ALL ARTWORK VIEWED FROM TOP SIDE	BOARD #: TIDA-00661-A	REV: E2	SUN REV: Not In VersionControl
LAYER NAME = Bottom Layer			
PLOT NAME = Bottom Layer	GENERATED : 12/8/2015 2:59:50 PM	TEXAS INSTRUMENTS	



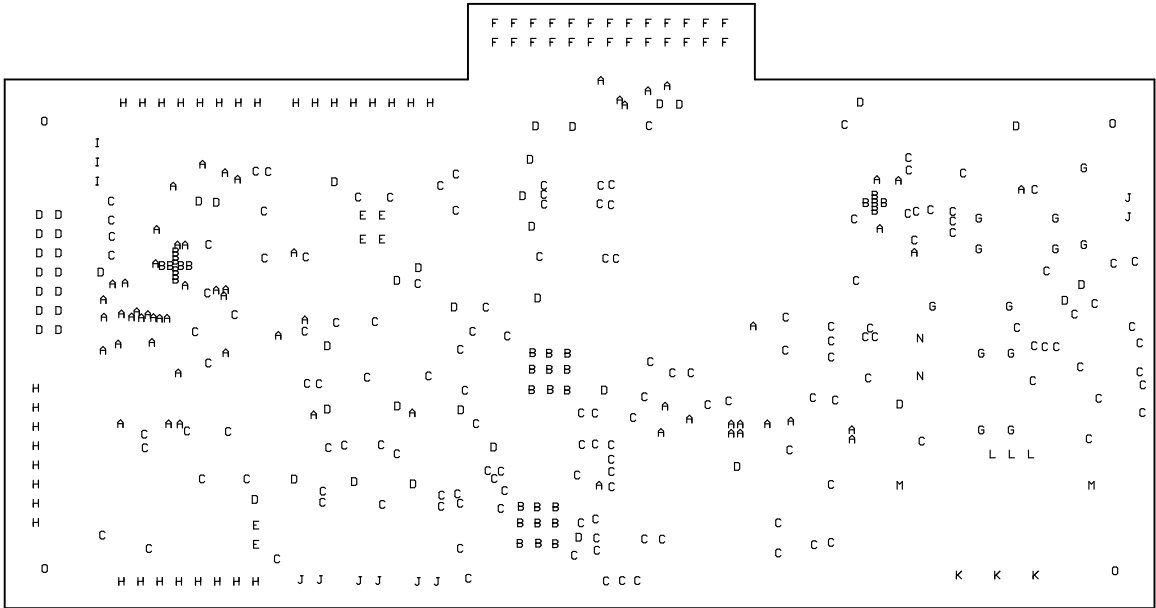
ALL ARTWORK VIEWED FROM TOP SIDE	BOARD #: TIDA-00661-A	REV: E2	SUN REV: Not In VersionControl
LAYER NAME = Bottom Solder			
PLOT NAME = Bottom Solder Mask	GENERATED : 12/8/2015 2:59:50 PM	TEXAS INSTRUMENTS	



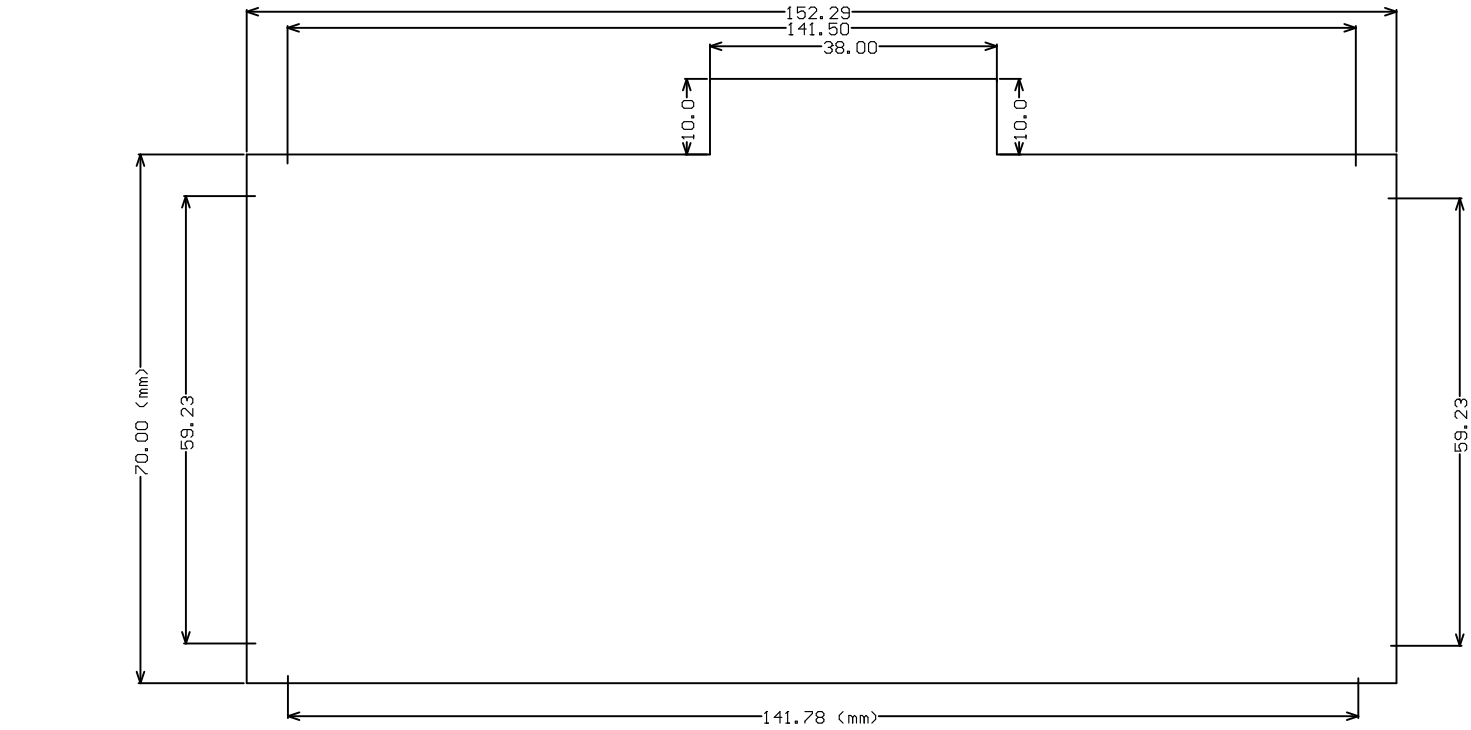
ALL ARTWORK VIEWED FROM TOP SIDE	BOARD #: TIDA-00661-A	REV: E2	SUN REV: Not In VersionControl
LAYER NAME = Bottom Overlay			
PLOT NAME = Bottom Overlay	GENERATED : 12/8/2015 2:59:51 PM	TEXAS INSTRUMENTS	

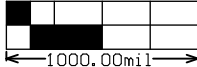
Symbol	Hit Count	Tool Size	Plated	Hole Type
B	31	7.874mil (0.2mm)	PTH	Round
A	60	12mil (0.305mm)	PTH	Round
C	147	16mil (0.406mm)	PTH	Round
I	3	33.465mil (0.85mm)	PTH	Round
N	2	36mil (0.914mm)	PTH	Round
E	6	38mil (0.965mm)	PTH	Round
D	46	40mil (1.016mm)	PTH	Round
H	32	43.307mil (1.1mm)	PTH	Round
J	8	44mil (1.118mm)	PTH	Round
G	12	45.276mil (1.15mm)	PTH	Round
F	26	47.244mil (1.2mm)	PTH	Round
L	3	50mil (1.27mm)	PTH	Round
K	3	52mil (1.321mm)	PTH	Round
M	2	106.5mil (2.705mm)	PTH	Round
O	4	125.984mil (3.2mm)	PTH	Round
	385	Total		

Drill Table
FOR 12MIL DRILL +0/-12MIL
FOR 7.874MIL DRILL +0/-7.874MIL
FOR 16MIL DRILL +0/-16MIL
FOR PTH DRILL +/-3MIL



ALL ARTWORK VIEWED FROM TOP SIDE	BOARD #: TIDA-00661-A	REV: E2	SUN REV: Not In VersionControl
LAYER NAME = Drill Drawing			
PLOT NAME = Drill Drawing	GENERATED : 12/8/2015 2:59:51 PM	TEXAS INSTRUMENTS	



 1000.00mil		ALL ARTWORK VIEWED FROM TOP SIDE		BOARD #:	TIDA-00661-A	REV:	E2	SUN REV:	Not In VersionControl
LAYER NAME =									
PLOT NAME = Board Dimensions		GENERATED		:	12/8/2015	2:59:52 PM	TEXAS INSTRUMENTS		