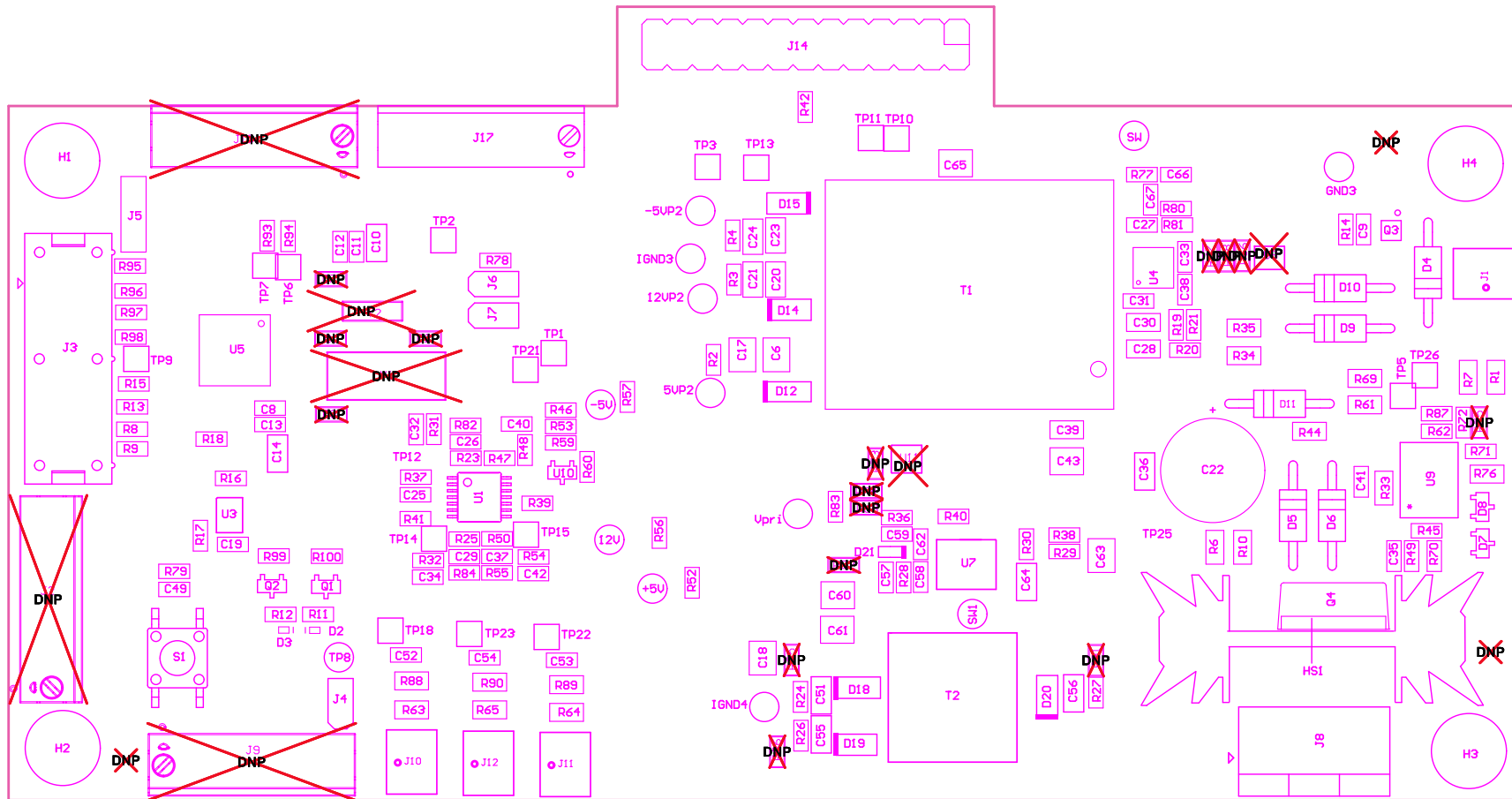


- Z21 ■ Install label in silkscreened box after wash. Text shall be 8 pt font. Text shall be per the Label Table in the PDF schematic.
- Z22 ■ These assemblies are ESD sensitive, ESD precautions shall be observed.
- Z23 ■ These assemblies must be clean and free from flux and all contaminants. Use of no clean flux is not acceptable.
- Z24 ■ These assemblies must comply with workmanship standards IPC-A-610 Class 2, unless otherwise specified.

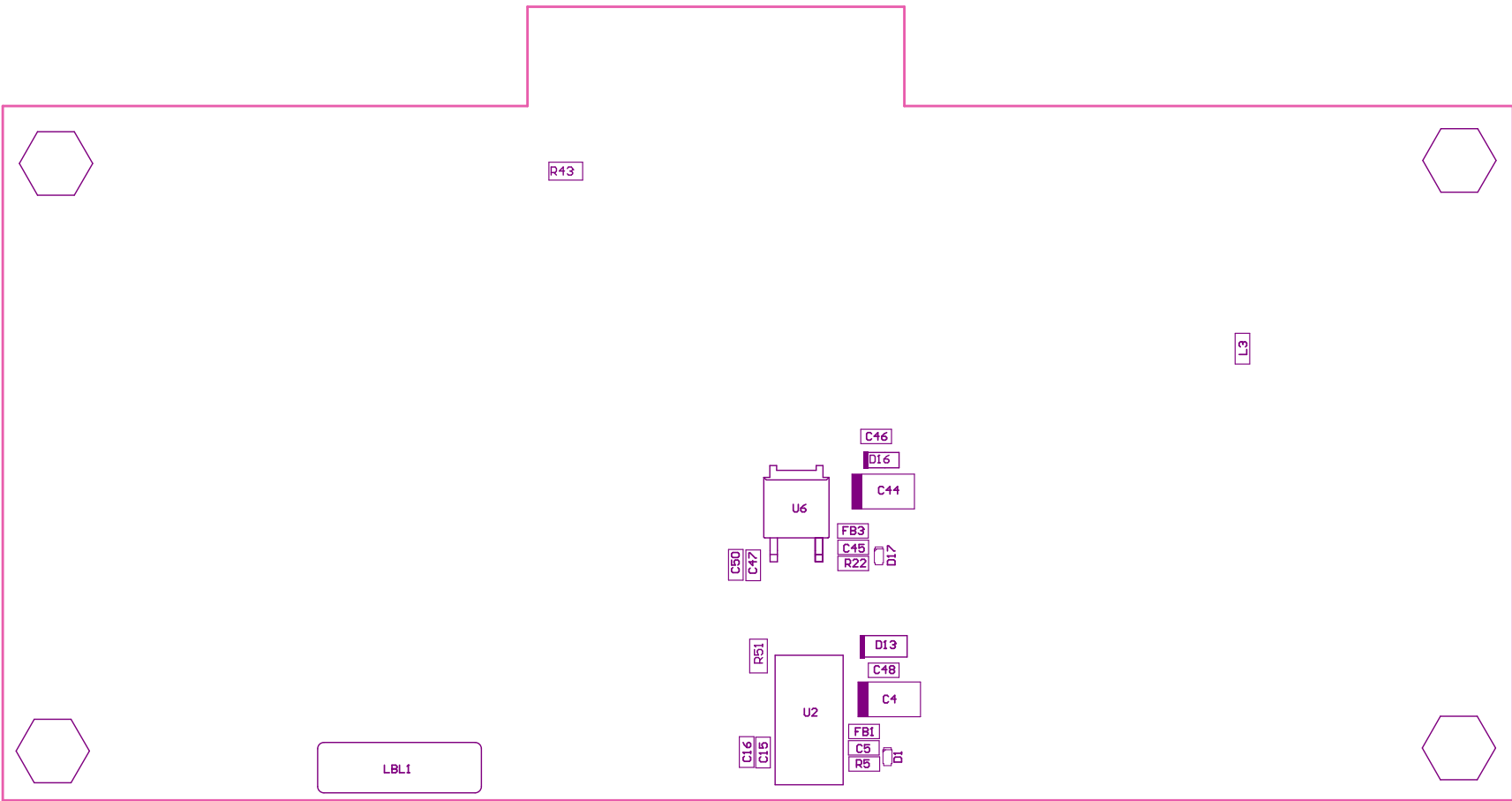


COMPONENTS MARKED 'DNP' SHOULD NOT BE POPULATED.

ASSEMBLY VARIANT:

001

PCB VIEWED FROM TOP SIDE	BOARD #:	TIDA-00661-A	REV:	E2	SUN REV:	Not In VersionControl
Layer Name =	M5 Assembly Top					IGNORE ->
PLOT NAME =	Top Assembly Drawing		GENERATED :	12/8/2015	2:57:38 PM	TEXAS INSTRUMENTS



COMPONENTS MARKED 'DNP' SHOULD NOT BE POPULATED.

ASSEMBLY VARIANT: 001

PCB VIEWED FROM BOTTOM SIDE	BOARD #: TIDA-00661-A	REV: E2	SUN REV: Not In VersionControl
Layer Name = M6 Assembly bottom	IGNORE ->		
PLOT NAME = Bottom Assembly Drawing	GENERATED : 12/8/2015 2:57:39 PM	TEXAS INSTRUMENTS	