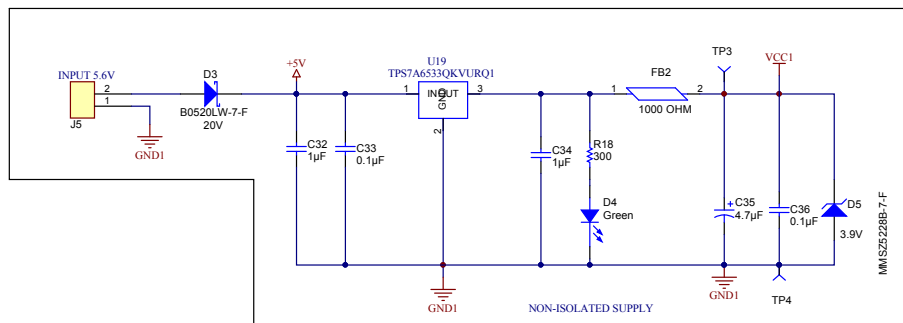
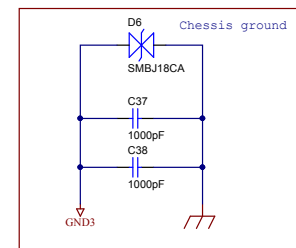
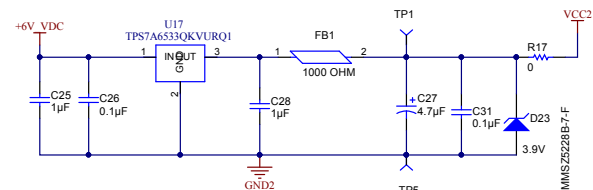
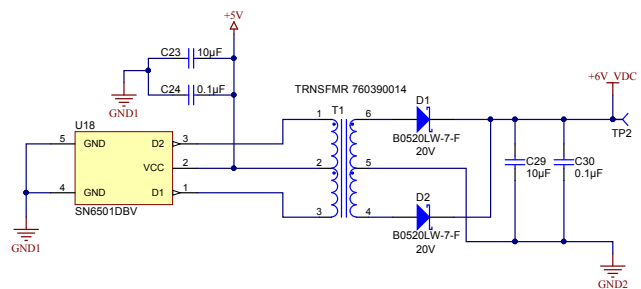


Texas Instruments and/or its licensors do not warrant the accuracy or completeness of this specification or any information contained therein. Texas Instruments and/or its licensors do not warrant that this design will meet the specifications, will be suitable for your application or fit for any particular purpose, or will operate in an implementation. Texas Instruments and/or its licensors do not warrant that the design is production worthy. You should completely validate and test your design implementation to confirm the system functionality for your application.

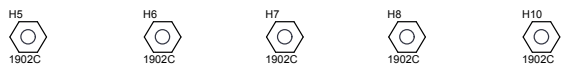
Number: TIDA-00557	Rev: A0	Designed for: Public Release	Mod. Date: 5/29/2015
SVN Rev. Not in version control	Assembly Variant: 001	Project Title: Full Modem Control with RS-232	Sheet Title:
Drawn By: SUNIL DWIVEDI	File: Page3 DCE-DTE SchDoc	Sheet: 3 of 5	Size: B
Engineer: SUNIL DWIVEDI	Contact: http://www.ti.com/support	http://www.ti.com	© Texas Instruments 2015





Texas Instruments and/or its licensors do not warrant the accuracy or completeness of this specification or any information contained therein. Texas Instruments and/or its licensors do not warrant that this design will meet the specifications, will be suitable for your application or fit for any particular purpose, or will operate in an implementation. Texas Instruments and/or its licensors do not warrant that the design is production worthy. You should completely validate and test your design implementation to confirm the system functionality for your application.

Number: TIDA-00557	Rev: A0	Designed for: Public Release	Mod. Date: 5/29/2015
SVN Rev: Not in version control	Assembly Variant: 001	Project Title: Full Modem Control with RS-232	
Drawn By: SUNIL DWIVEDI	File: Page4 Power Supply SchDoc	Sheet: 4 of 5	
Engineer: SUNIL DWIVEDI	Contact: http://www.ti.com/support	Size: B	



PCB
LOGO
Texas Instruments

Label Table	
Variant	Label Text
001	ChangeMe!
002	ChangeMe!

Size: 0.65" x 0.20 "

ZZ1
Label Assembly Note
 This Assembly Note is for PCB labels only

Assembly Note
These assemblies are ESD sensitive, ESD precautions shall be observed.

ZZ3
Assembly Note
These assemblies must be clean and free from flux and all contaminants. Use of no clean flux is not acceptable.

ZZ4
Assembly Note
These assemblies must comply with workmanship standards IPC-A-610 Class 2, unless otherwise specified.

You should delete the nylon screws/standoffs and/or the bump-ons as needed for your design (or substitute other parts from Hardware.IntLib). Bump-ons are cheaper, but provide less clearance.

Deleting anything else from this page may result in your EVM submission being rejected (until you add them back).

Update the Label Text in the Label Table as needed for each Assembly Variant.

You can delete this note too.