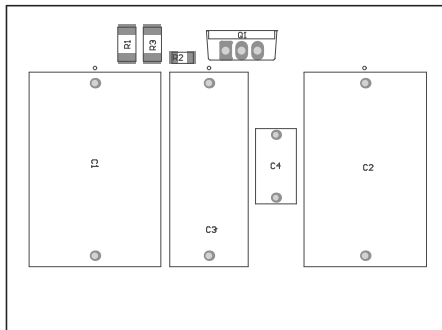


ZZ1 ■ Install label in silkscreened box after final wash. Text shall be 8 pt font. Text shall be per the Label Table in the PDF schematic.
 ZZ2 ■ These assemblies are ESD sensitive, ESD precautions shall be observed.
 ZZ3 ■ These assemblies must be clean and free from flux and all contaminants. Use of no clean flux is not acceptable.
 ZZ4 ■ These assemblies must comply with workmanship standards IPC-A-610 Class 2, unless otherwise specified.

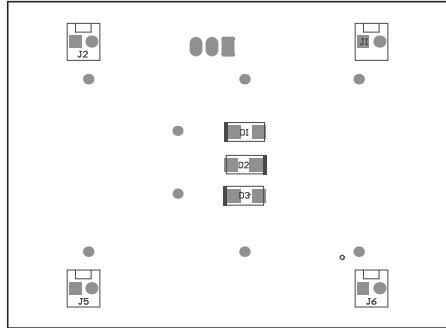


COMPONENTS MARKED 'DNP' SHOULD NOT BE POPULATED.

ASSEMBLY VARIANT:

001

PCB VIEWED FROM TOP SIDE	BOARD #:	TIDA-00440	REV:	E1	SUN REV:	Not In VersionControl
IGNORE ->	ASSEMBLY TOP					
PLOT NAME =	Top Assembly Drawing	GENERATED :	2/6/2015	6:30:09 PM	TEXAS INSTRUMENTS	



COMPONENTS MARKED 'DNP' SHOULD NOT BE POPULATED.

ASSEMBLY VARIANT: 001

PCB VIEWED FROM BOTTOM SIDE	BOARD #: TIDA-00440	REV: E1	SUN REV: Not In VersionControl
	IGNORE -> ASSEMBLY BOTTOM		
PLOT NAME = Bottom Assembly Drawing	GENERATED : 2/6/2015 6:30:09 PM	TEXAS INSTRUMENTS	