

1

2

3

4

5

6

Revision History

Rev	ECN #	Approved Date	Approved by	Notes
N/A	N/A	N/A	N/A	N/A

Page 2

BLOCK DIAGRAM

Page 3

+24V/5V INPUT ISOLATED DC-DC + isolated DC-DC converter

Page 4

5V to +/- 14V using SPLIT RAIL converter

Page 5

isolated supply for AFE using LDOs, reference - serial and shunt , voltage supervisor

Orderable: N/A

TID #: 00300

Number: TIDA-00300_ISO_AFE-Power+Protection_Coversheet

SVN Rev: Not in version control

Drawn By: Sreenivasa

Engineer: Sreenivasa

Designed for: Public Release

Project Title: TIDA-00300_ISO_AFE-Power+Protection

Assembly Variant: 001

File: TIDA-00300_ISO_AFE-Power+Protection_Coversheet

Contact: http://www.ti.com/support

Mod. Date: 2/21/2019

Sheet: 1 of 6

Page: 1 of 6

© Texas Instruments 2019

TEXAS INSTRUMENTS

TEXAS INSTRUMENTS

TEXAS INSTRUMENTS

1

2

3

4

5

6

A

A

B

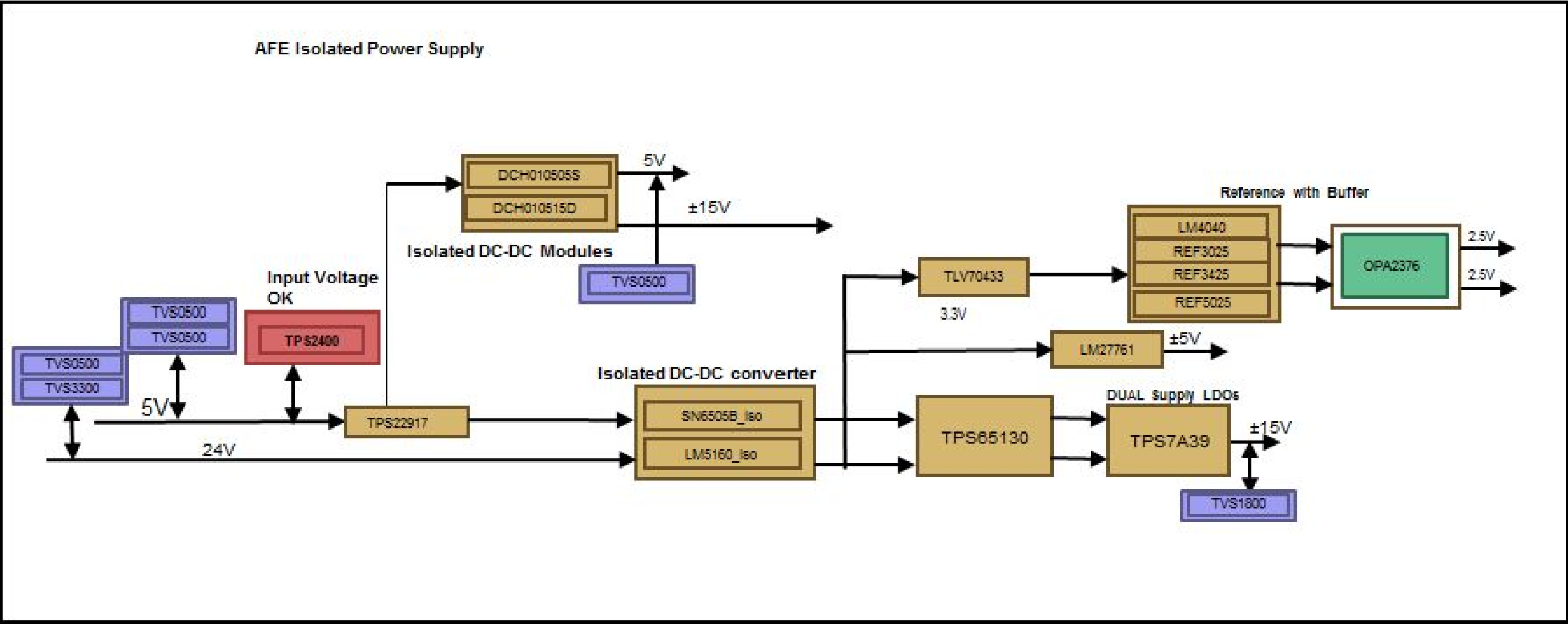
B

C

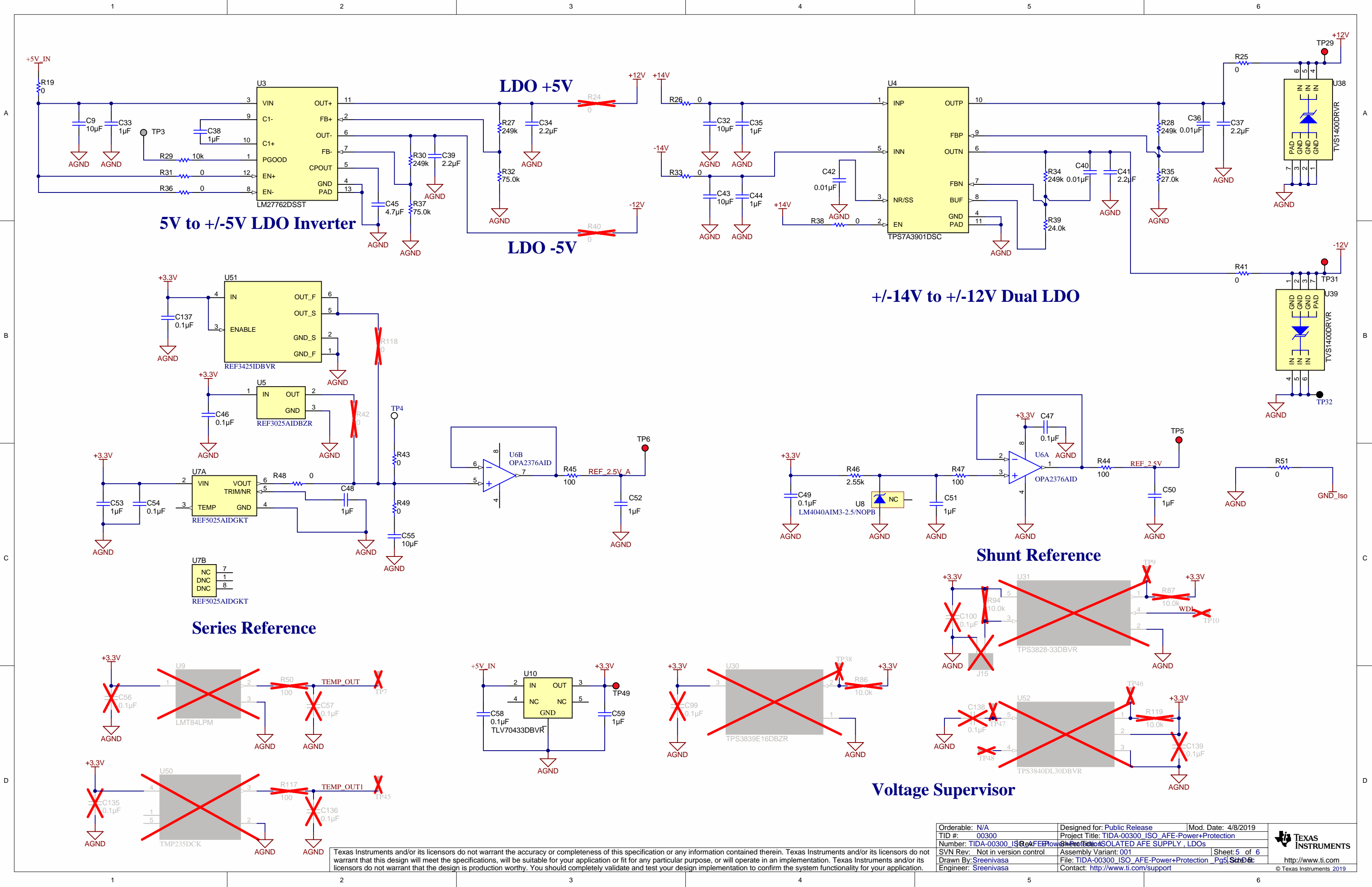
C

D

D







5V to +/-5V LDO Inverter

LDO +5V

LDO -5V

+/-14V to +/-12V Dual LDO

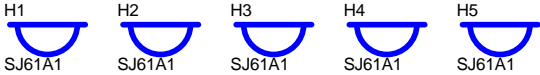
Series Reference

Shunt Reference

Voltage Supervisor

Texas Instruments and/or its licensors do not warrant the accuracy or completeness of this specification or any information contained therein. Texas Instruments and/or its licensors do not warrant that this design will meet the specifications, will be suitable for your application or fit for any particular purpose, or will operate in an implementation. Texas Instruments and/or its licensors do not warrant that the design is production worthy. You should completely validate and test your design implementation to confirm the system functionality for your application.

Orderable: N/A	Designed for: Public Release	Mod. Date: 4/8/2019
TID #: 00300	Project Title: TIDA-00300 ISO AFE-Power+Protection	
Number: TIDA-00300 ISO AFE-Power+Protection	Assembly Variant: 001	Sheet: 5 of 6
SVN Rev: Not in version control	File: TIDA-00300_ISO_AFE-Power+Protection_Pg5.SchDoc	
Drawn By: Sreenivasa	Contact: http://www.ti.com/support	
Engineer: Sreenivasa		



PCB Number: TIDA-00300_ISO_AFE-Power+Protection
PCB Rev: E1



Label Table	
Variant	Label Text

ZZ1
Label Assembly Note
This Assembly Note is for PCB labels only

ZZ2
Assembly Note
This Assembly Note will show in the PcbDoc and associated outputs

ZZ3
Assembly Note
This Assembly Note will show in the PcbDoc and associated outputs

ZZ4
Assembly Note
This Assembly Note will show in the PcbDoc and associated outputs

Texas Instruments and/or its licensors do not warrant the accuracy or completeness of this specification or any information contained therein. Texas Instruments and/or its licensors do not warrant that this design will meet the specifications, will be suitable for your application or fit for any particular purpose, or will operate in an implementation. Texas Instruments and/or its licensors do not warrant that the design is production worthy. You should completely validate and test your design implementation to confirm the system functionality for your application.

Orderable: N/A	Designed for: Public Release	Mod. Date: 2/21/2019
TID #: 00300	Project Title: TIDA-00300_ISO_AFE-Power+Protection	
Number: TIDA-00300_ISO_AFE-Power+Protection	Sheet: 6 of 6	
SVN Rev: Not in version control	Assembly Variant: 001	Sheet: 6 of 6
Drawn By: Sreenivasa	File: TIDA-00300_ISO_AFE-Power+Protection_EVM_Schematic	
Engineer: Sreenivasa	Contact: http://www.ti.com/support	