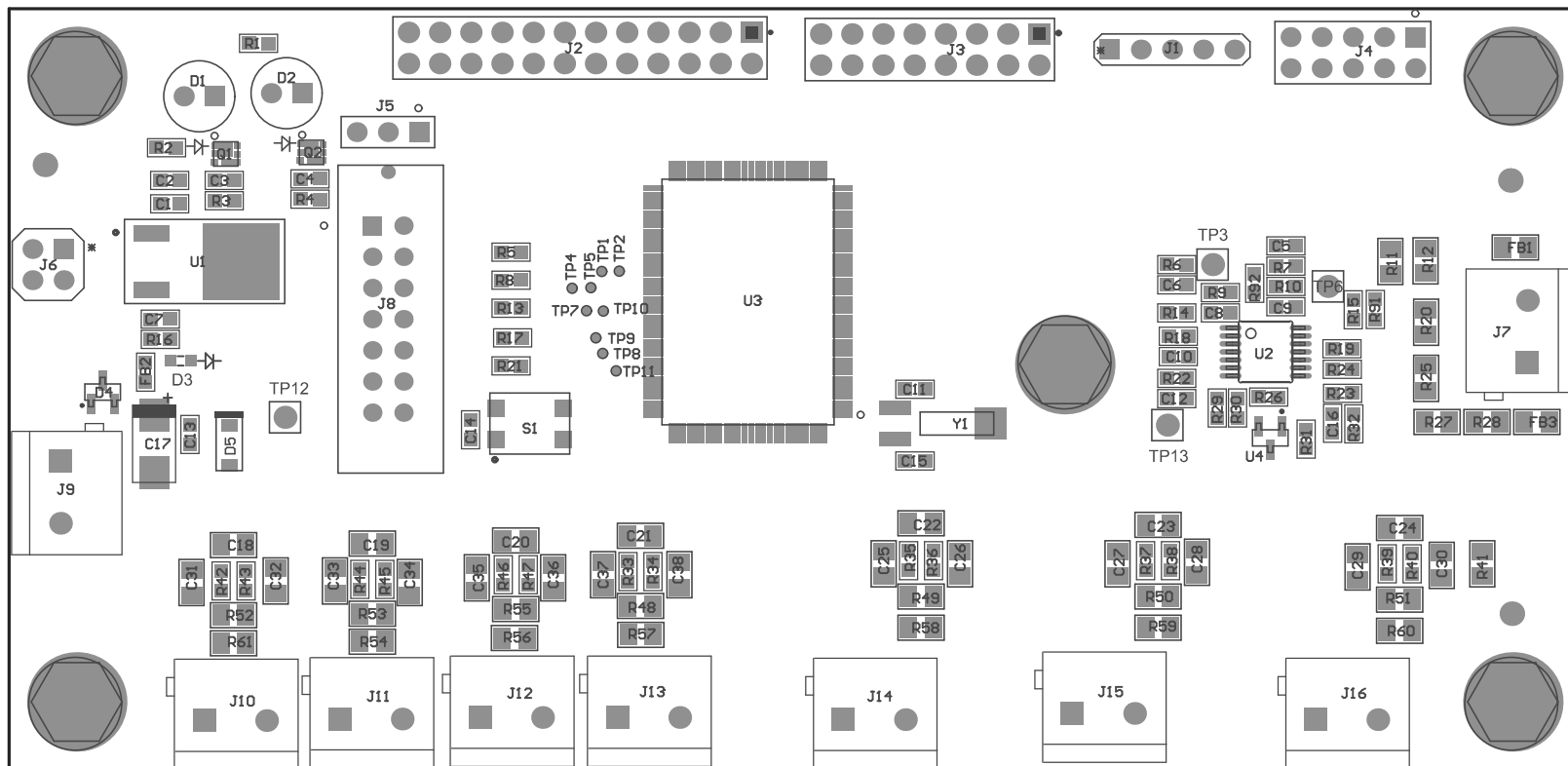
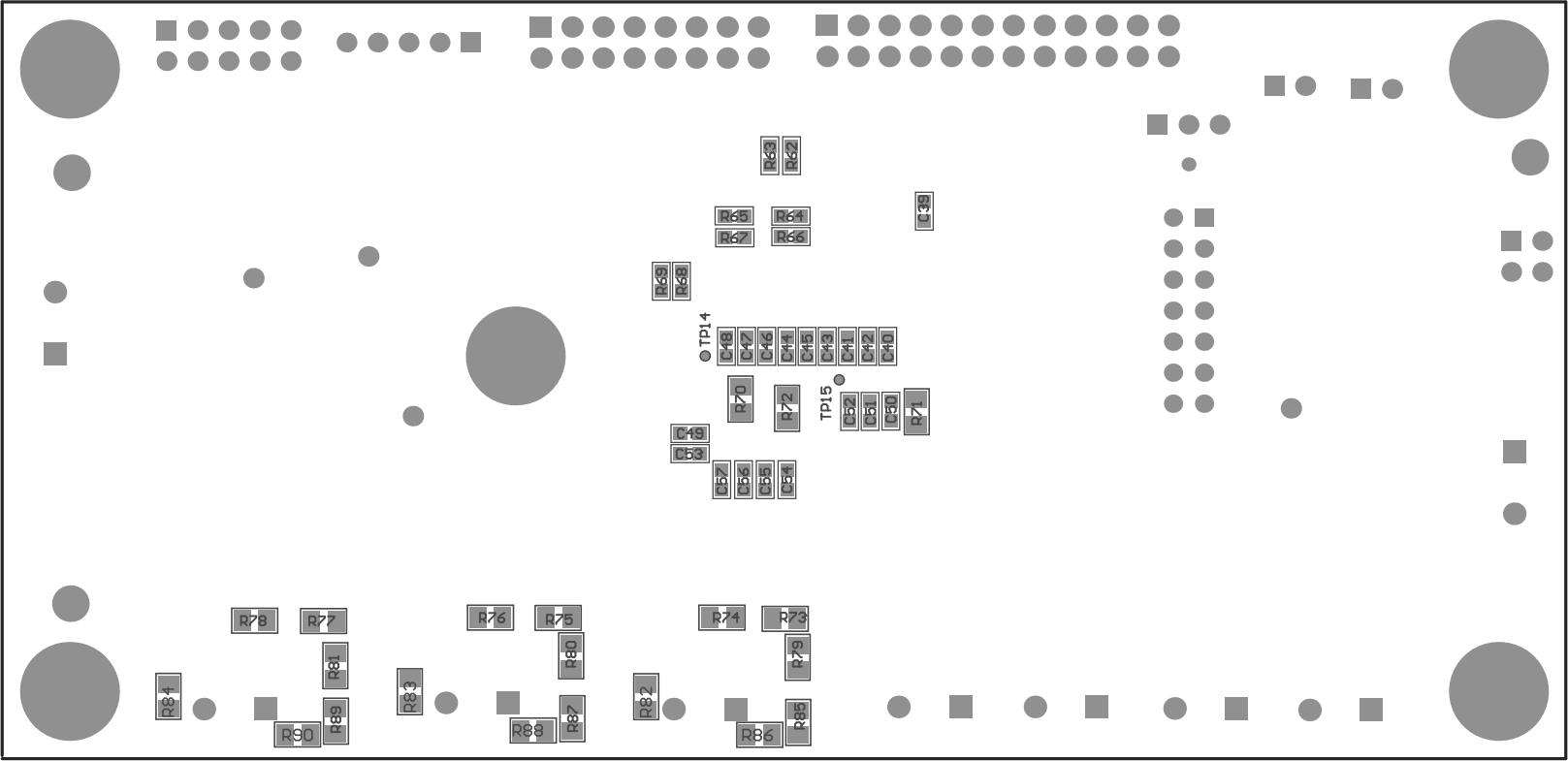


ZZ4 ■ These assemblies must comply with workmanship standards IPC-A-610 Class 2, unless otherwise specified.



COMPONENTS MARKED 'DNP' SHOULD NOT BE POPULATED.
ASSEMBLY VARIANT: [No Variations]

| | | | |
|----------------------------------|----------------------------------|---------|--------------------------------|
| PCB VIEWED FROM TOP SIDE | BOARD #:TIDA-00222 | REV: E1 | SVN REV: Not In VersionControl |
| Top Assembly | | | |
| PLOT NAME = Top Assembly Drawing | GENERATED : 7/14/2014 4:47:28 PM | | TEXAS INSTRUMENTS |



COMPONENTS MARKED 'DNP' SHOULD NOT BE POPULATED.
ASSEMBLY VARIANT: [No Variations]

| | | | |
|-------------------------------------|----------------------------------|-------------------|--------------------------------|
| PCB VIEWED FROM BOTTOM SIDE | BOARD #: TIDA-00222 | REV:E1 | SUN REV: Not In VersionControl |
| | Bottom Assembly | | |
| PLOT NAME = Bottom Assembly Drawing | GENERATED : 7/14/2014 4:47:29 PM | TEXAS INSTRUMENTS | |