


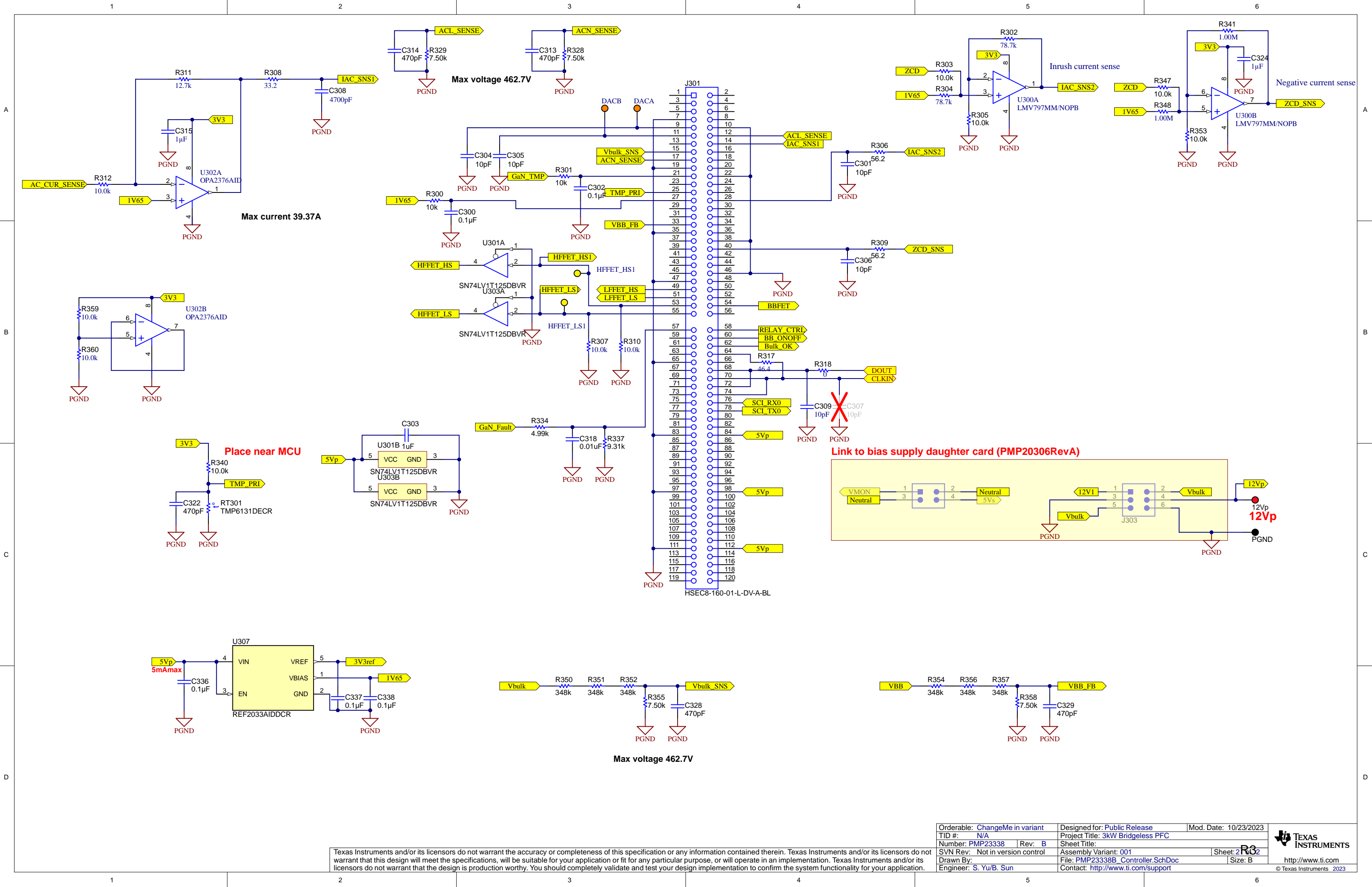
1. Need to check part availability when request to build.
2. This board uses boot strap gate driver for LF FETs, does not support negative DC input on Neutral.
3. 4x 180uF bulk cap is applied: C123 and C130 to be placed on top of C114 and C120, respectively.
4. C114, C120, C123, C130 in laid down position.



PCB
LOGO
WEEE logo

Orderable: ChangeMe in variant	Designed for: Public Release	Mod. Date: 10/23/2023	 TEXAS INSTRUMENTS http://www.ti.com © Texas Instruments 2023
TID #: N/A	Project Title: 3kW Bridgeless PFC		
Number: PMP23338	Rev: B	Sheet Title:	
SVN Rev: Not in version control	Assembly Variant: 001	Sheet: 1 of 2	
Drawn By:	File: PMP23338B_PFC.SchDoc	Size: B	
Engineer: S. Yu/B. Sun	Contact: http://www.ti.com/support		





Texas Instruments and/or its licensors do not warrant the accuracy or completeness of this specification or any information contained therein. Texas Instruments and/or its licensors do not warrant that this design will meet the specifications, will be suitable for your application or fit for any particular purpose, or will operate in an implementation. Texas Instruments and/or its licensors do not warrant that the design is production worthy. You should completely validate and test your design implementation to confirm the system functionality for your application.

Orderable: ChangeMe in variant	Designed for: Public Release	Mod. Date: 10/23/2023
TID #: N/A	Project Title: 3kW Bridgeless PFC	
Number: PMP23338	Rev: B	Sheet Title:
SVN Rev: Not in version control	Assembly Variant: 001	Sheet: 2 of 32
Drawn By:	File: PMP23338B_Controller.SchDoc	Size: B
Engineer: S. Yu/B. Sun	Contact: http://www.ti.com/support	