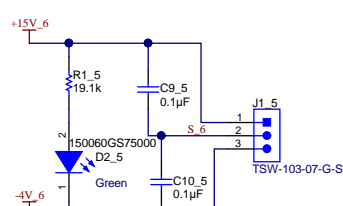
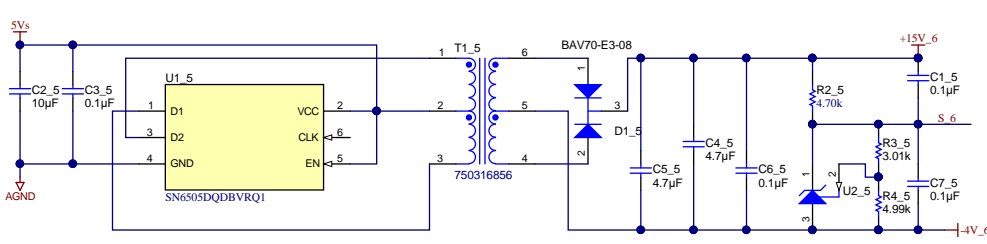
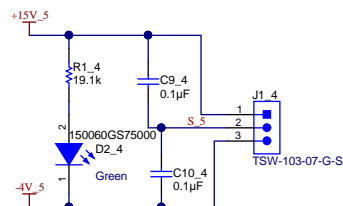
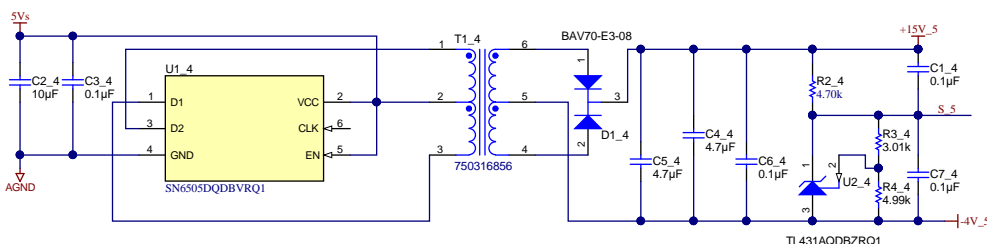
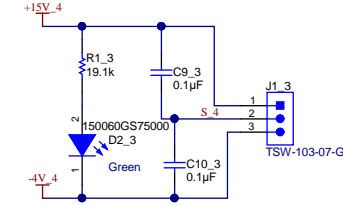
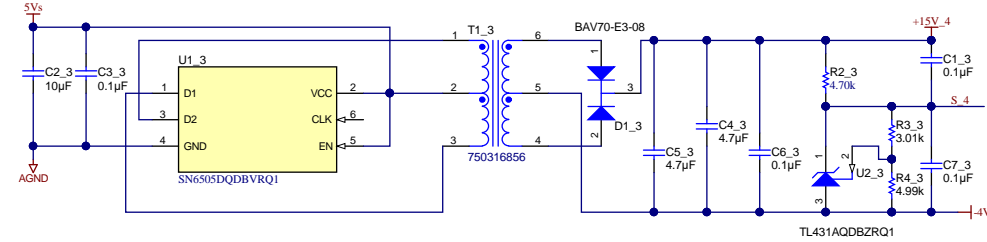
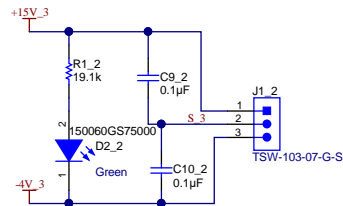
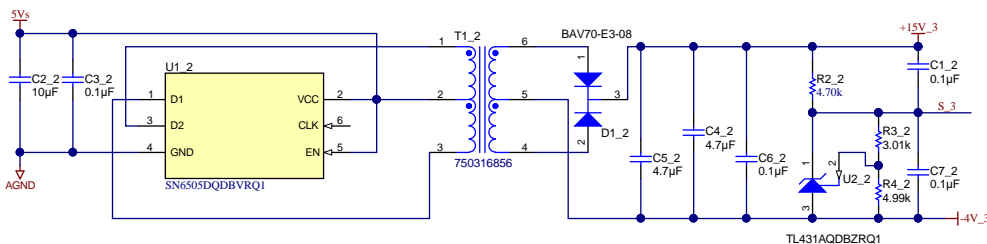
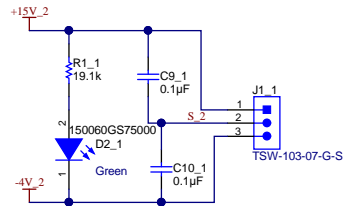
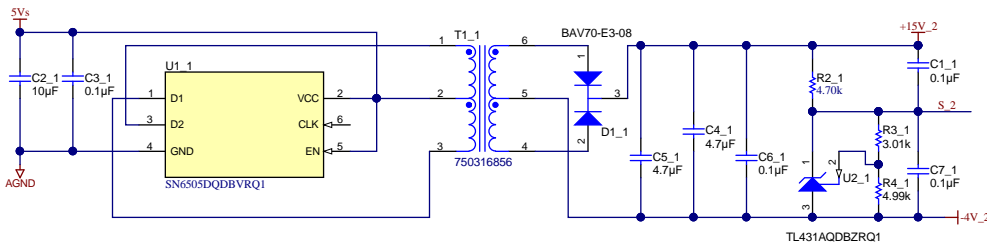
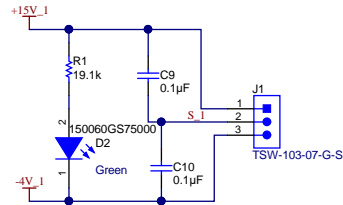
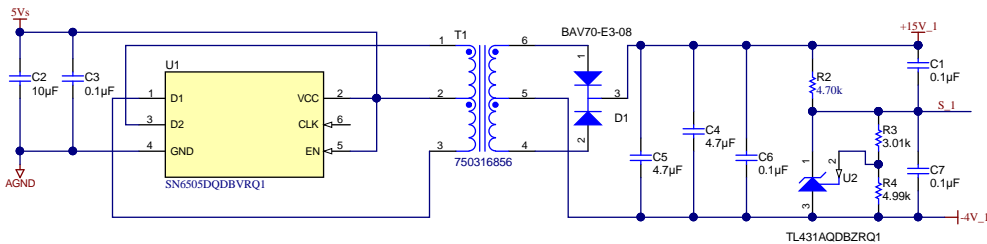


For mech support only



PCB Number: EVT\_012

PCB Rev: E2



High Voltage1



High Voltage2



PCB LOGO

WEEE logo

Variant/Label Table

Variant	Label Text
001	ChangeMe!
002	ChangeMe!

ZZ1

Label Assembly Note

This Assembly Note is for PCB labels only

ZZ2

Assembly Note

These assemblies are ESD sensitive, ESD precautions shall be observed.

ZZ3

Assembly Note

These assemblies must be clean and free from flux and all contaminants. Use of no clean flux is not acceptable.

ZZ4

Assembly Note

These assemblies must comply with workmanship standards IPC-A-610 Class 2, unless otherwise specified.

Texas Instruments and/or its licensors do not warrant the accuracy or completeness of this specification or any information contained therein. Texas Instruments and/or its licensors do not warrant that this design will meet the specifications, will be suitable for your application or fit for any particular purpose, or will operate in an implementation. Texas Instruments and/or its licensors do not warrant that the design is production worthy. You should completely validate and test your design implementation to confirm the system functionality for your application.

Orderable: N/A	Designed for: Public Release	Mod. Date: 11/11/2020	
TID #:	N/A	Project Title: Power supply for Traction Gate Driver	
Number: EVT_012	Rev: E2	Sheet Title:	
SVN Rev: Version control disabled	Assembly Variant: 001	Sheet: 2 of 3	
Drawn By:	File: PSM_InvGateDrv.SchDoc	Size: A2	
Engineer: X.Gong	Contact: http://www.ti.com/support		© Texas Instruments 2019