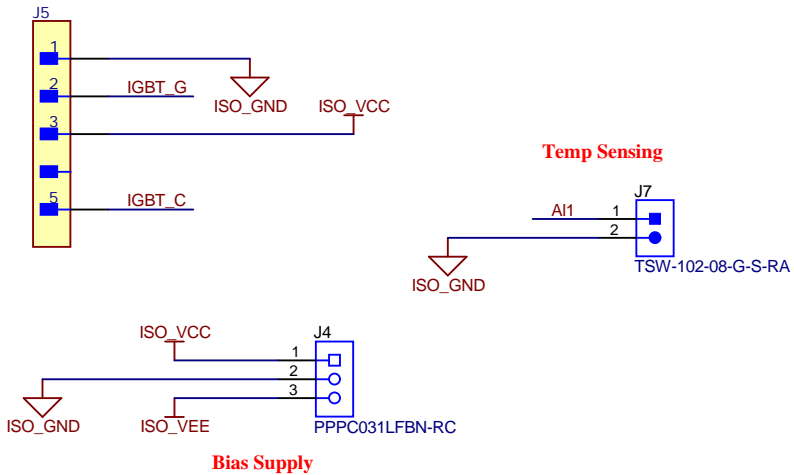


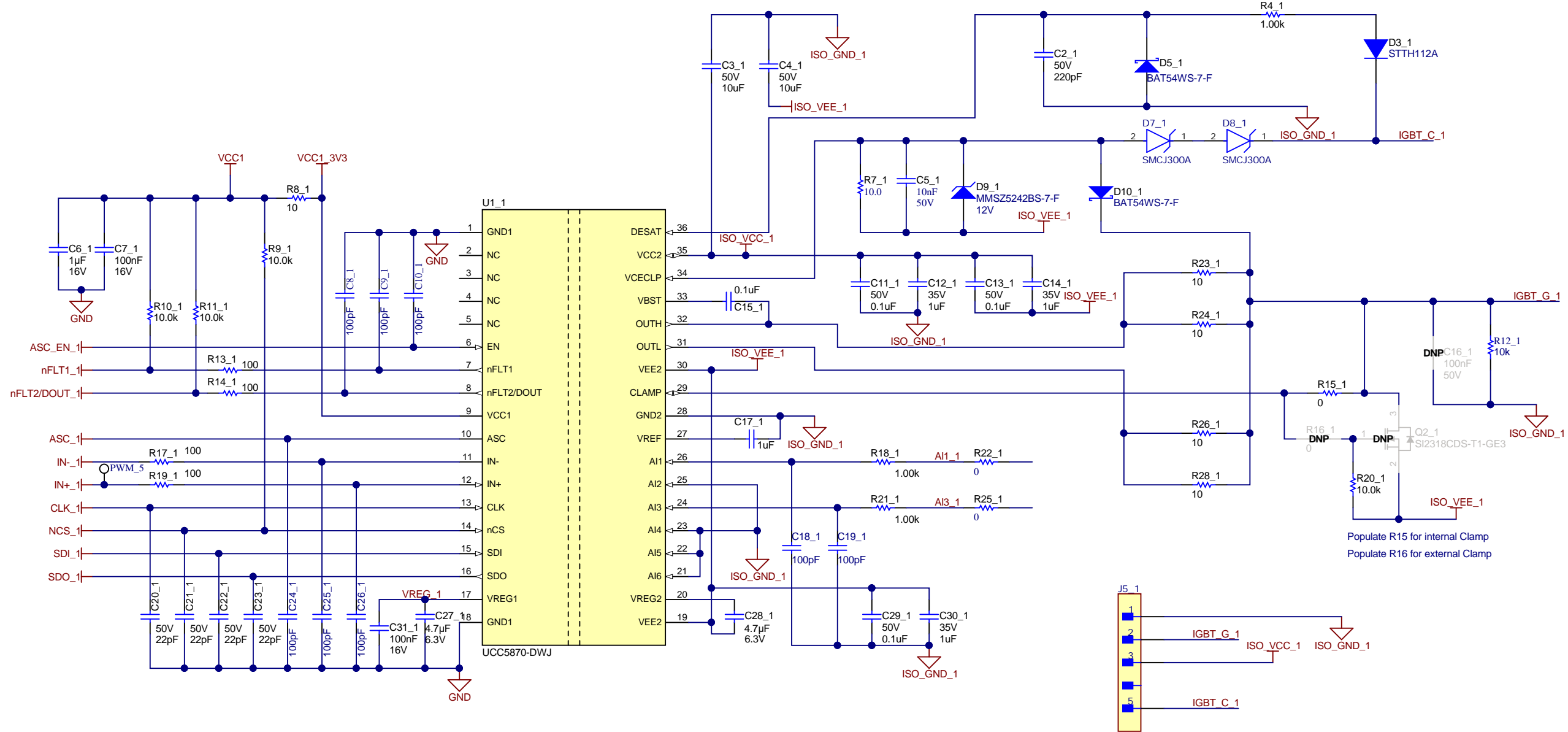
Rev2 Notes:

- 1). Pin27 (VREF) should be connected to C17 only, not to the VEE2 pin. The wiring got shifted around when drawing the schematic and got wrongly connected.
- 2). Pin 20 (REG2) should be connected to ISO\_VEE through the 4.7uF capacitor, instead of to ISO\_GND.
- 3). C18 and C19 may be replaced with 0E resistor if noisy shutdowns were to happen through these lines



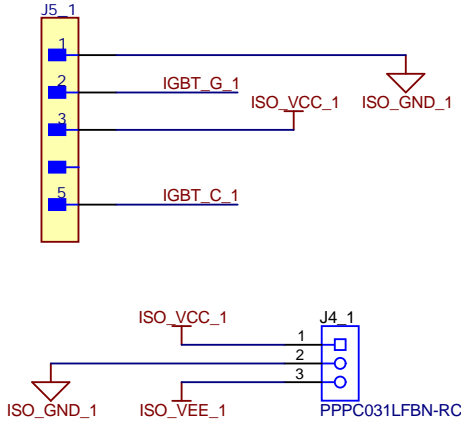
Texas Instruments and/or its licensors do not warrant the accuracy or completeness of this specification or any information contained therein. Texas Instruments and/or its licensors do not warrant that this design will meet the specifications, will be suitable for your application or fit for any particular purpose, or will operate in an implementation. Texas Instruments and/or its licensors do not warrant that the design is production worthy. You should completely validate and test your design implementation to confirm the system functionality for your application.

Orderable: N/A	Designed for: Public Release	Mod. Date: 12/31/2020
TID #: N/A	Project Title: UCC5870 Gate Driver for Traction Inverter	
Number: EVT_011	Rev: E2	Sheet Title:
SVN Rev: X	Version control disabled	Assembly Variant: 001
Drawn By: X.Gong		File: InvGateDriver_1.SchDoc
Engineer: X.Gong		Contact: http://www.ti.com/support



Rev2 Notes:

- 1). Pin27 (VREF) should be connected to C17 only, not to the VEE2 pin. The wiring got shifted around when drawing the schematic and got wrongly connected.
- 2). Pin 20 (REG2) should be connected to ISO\_VEE through the 4.7uF capacitor, instead of to ISO\_GND.
- 3). C18 and C19 may be replaced with 0E resistor if noisy shutdowns were to happen through these lines



A

B

C

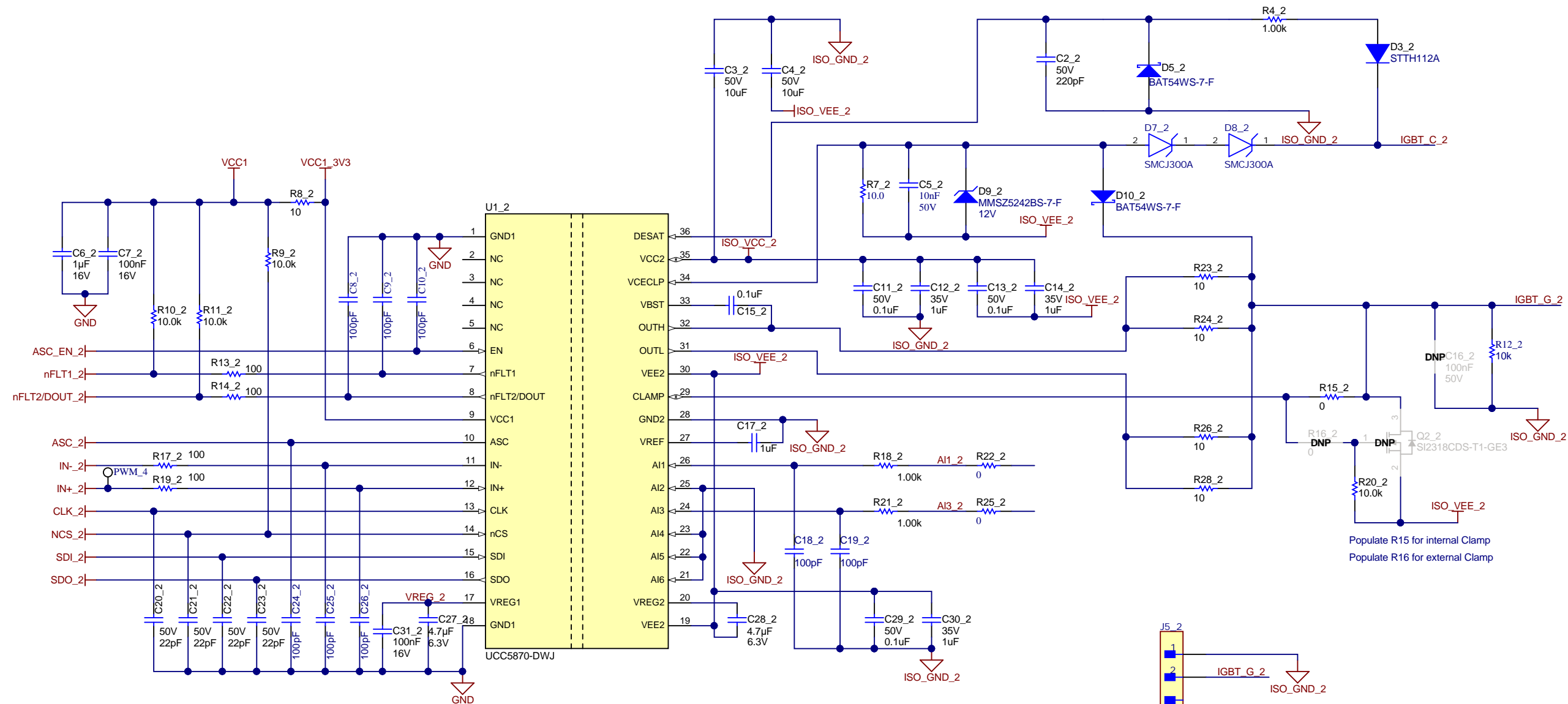
D

A

B

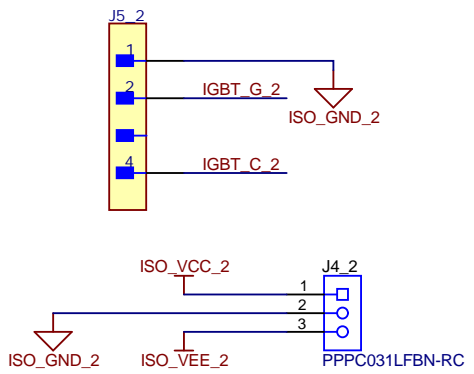
C

D



Rev2 Notes:

- 1). Pin27 (VREF) should be connected to C17 only, not to the VEE2 pin. The wiring got shifted around when drawing the schematic and got wrongly connected.
- 2). Pin 20 (REG2) should be connected to ISO\_VEE through the 4.7uF capacitor, instead of to ISO\_GND.
- 3). C18 and C19 may be replaced with 0E resistor if noisy shutdowns were to happen through these lines





1

2

3

4

5

6

7

8

A

B

C

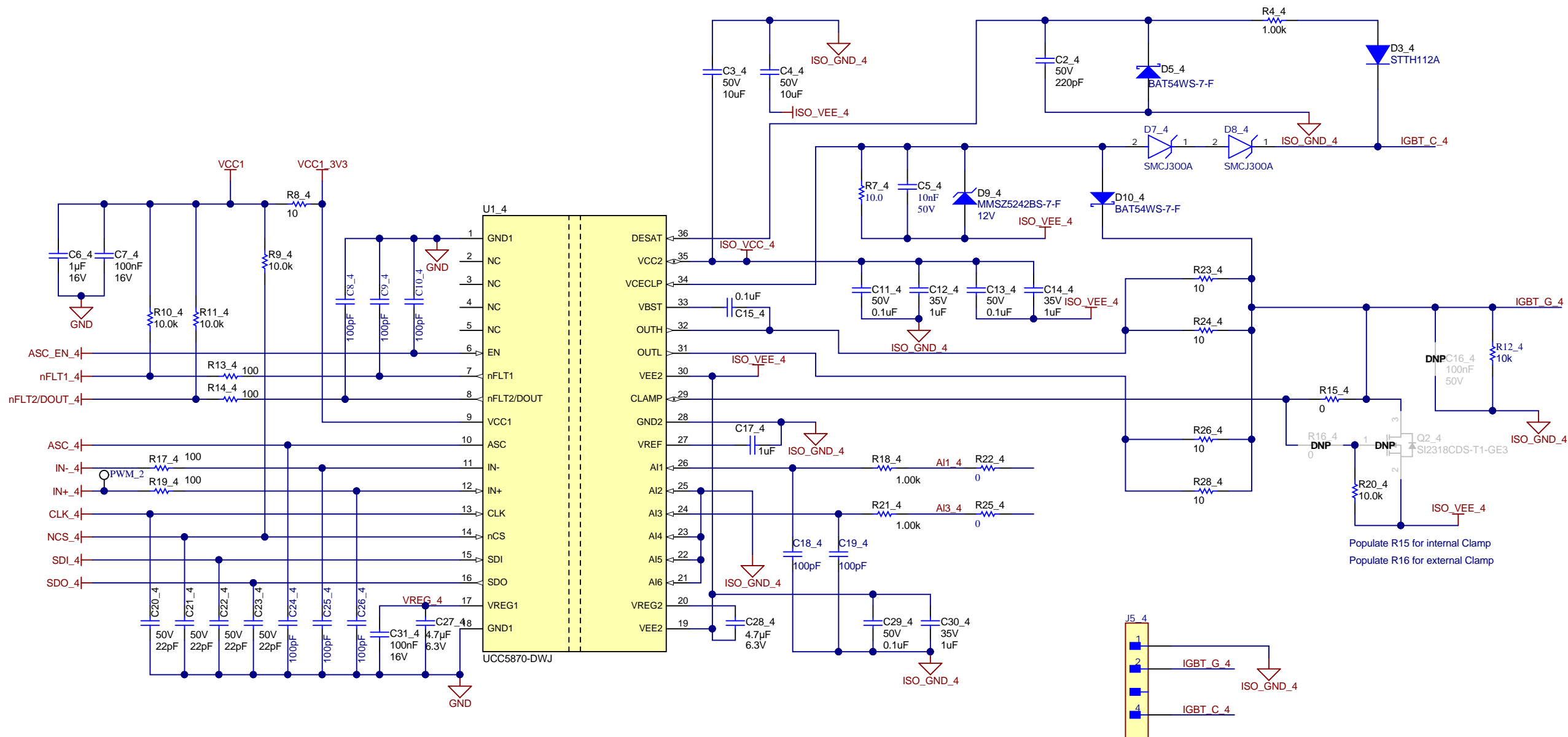
D

A

B

C

D



## Rev2 Notes:

- 1). Pin27 (VREF) should be connected to C17 only, not to the VEE2 pin. The wiring got shifted around when drawing the schematic and got wrongly connected.
- 2). Pin 20 (REG2) should be connected to ISO\_VEE through the 4.7uF capacitor, instead of to ISO\_GND.
- 3). C18 and C19 may be replaced with 0E resistor if noisy shutdowns were to happen through these lines

Orderable: N/A	Designed for: Public Release	Mod. Date: 12/31/2020
TID #: N/A	Project Title: UCC5870 Gate Driver for Traction Inverter	
Number: EVT_011	Rev: E2	Sheet Title: *
SVN Rev: Version control disabled	Assembly Variant: 001	Sheet: 5 of 7
Drawn By: *	File: InvGateDriver_5.SchDoc	Size: A3
Engineer: X.Gong	Contact: <a href="http://www.ti.com/support">http://www.ti.com/support</a>	

A

A

B

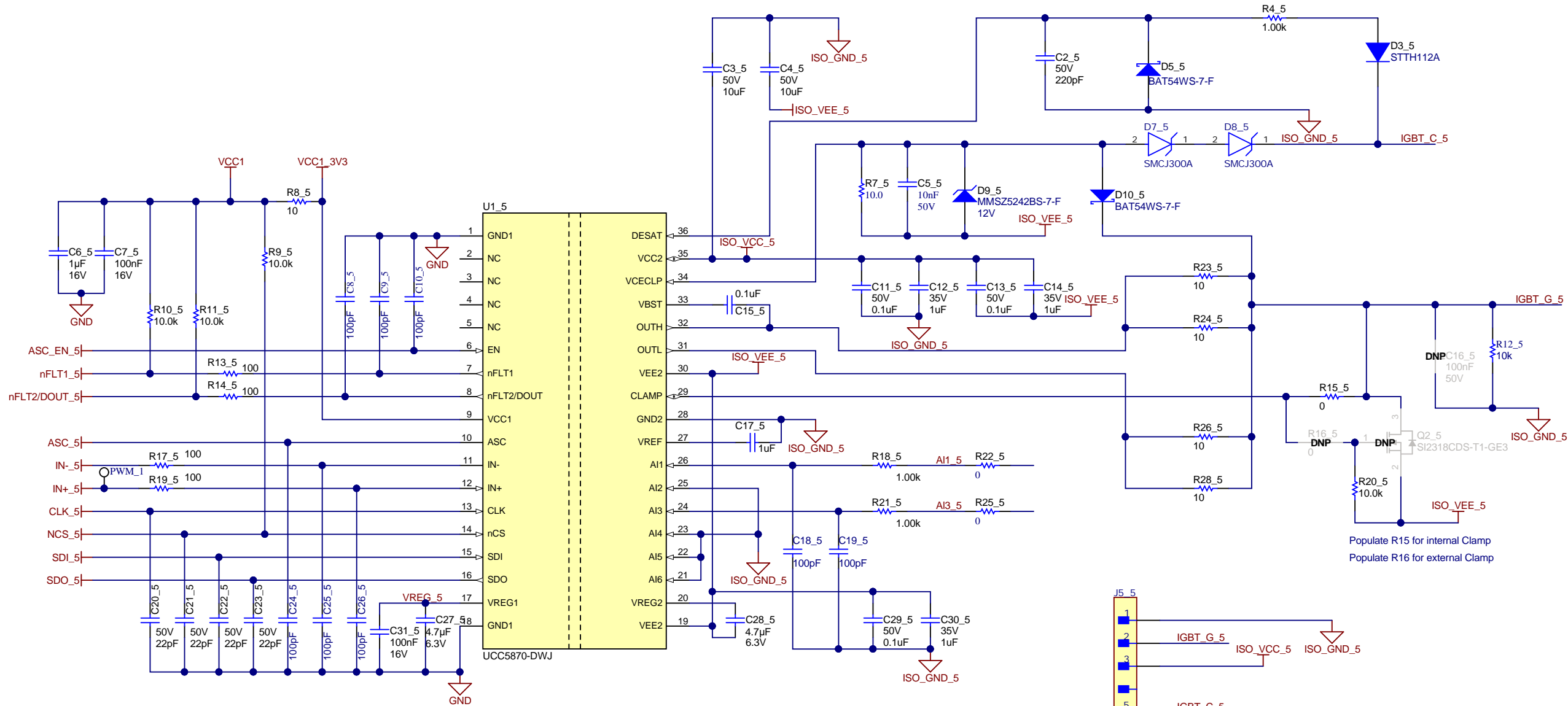
B

C

C

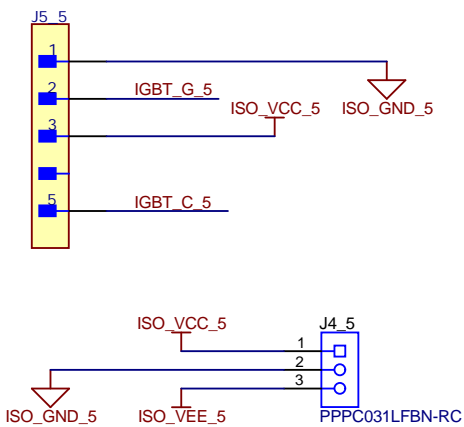
D

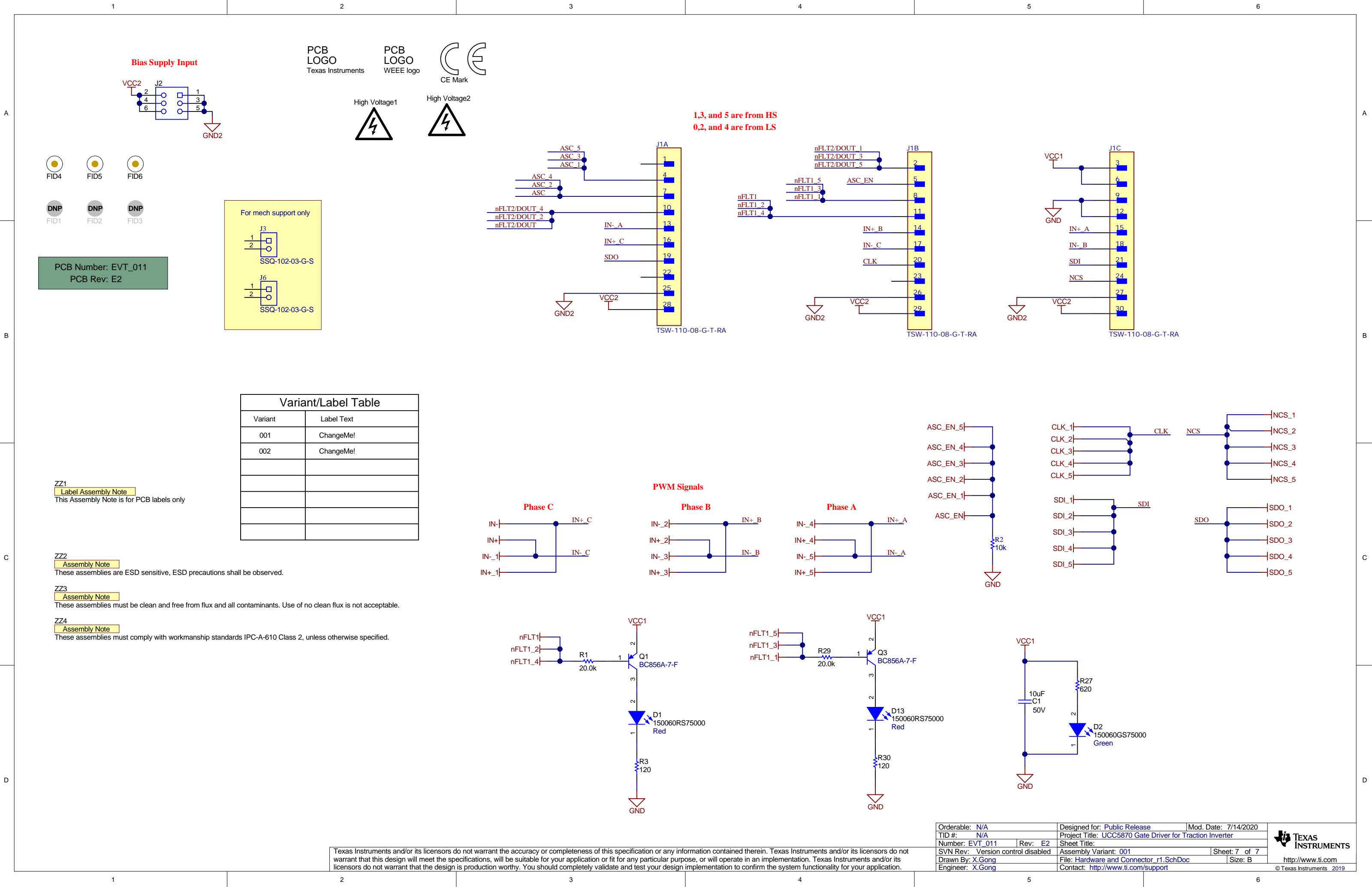
D



Rev2 Notes:

- 1). Pin27 (VREF) should be connected to C17 only, not to the VEE2 pin. The wiring got shifted around when drawing the schematic and got wrongly connected.
- 2). Pin 20 (REG2) should be connected to ISO\_VEE through the 4.7uF capacitor, instead of to ISO\_GND.
- 3). C18 and C19 may be replaced with 0E resistor if noisy shutdowns were to happen through these lines





Bias Supply Input



1,3, and 5 are from HS  
0,2, and 4 are from LS

For mech support only

PCB Number: EVT\_011  
PCB Rev: E2

Variant/Label Table

Variant	Label Text
001	ChangeMe!
002	ChangeMe!

ZZ1  
Label Assembly Note  
This Assembly Note is for PCB labels only

ZZ2  
Assembly Note  
These assemblies are ESD sensitive, ESD precautions shall be observed.

ZZ3  
Assembly Note  
These assemblies must be clean and free from flux and all contaminants. Use of no clean flux is not acceptable.

ZZ4  
Assembly Note  
These assemblies must comply with workmanship standards IPC-A-610 Class 2, unless otherwise specified.

Texas Instruments and/or its licensors do not warrant the accuracy or completeness of this specification or any information contained therein. Texas Instruments and/or its licensors do not warrant that this design will meet the specifications, will be suitable for your application or fit for any particular purpose, or will operate in an implementation. Texas Instruments and/or its licensors do not warrant that the design is production worthy. You should completely validate and test your design implementation to confirm the system functionality for your application.

Orderable: N/A	Designed for: Public Release	Mod. Date: 7/14/2020	
TID #: N/A	Project Title: UCC5870 Gate Driver for Traction Inverter	Sheet Title:	
Number: EVT_011	Rev: E2	Assembly Variant: 001	
SVN Rev: Version control disabled	File: Hardware and Connector_r1.SchDoc	Size: B	
Drawn By: X.Gong	Contact: http://www.ti.com/support		

© Texas Instruments 2019