

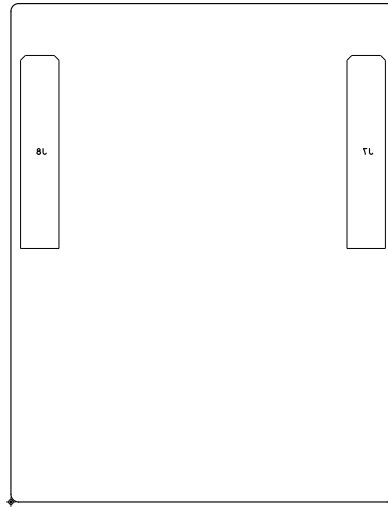
COMPANY NAME : TEXAS INSTRUMENTS

DATE: FEBRUARY 07 2014

DESIGNED BY: TESSOLVE

PART NO/CARD REF: CC31XXEMUBOOST Rev 3.0

FILM LAYER: ASSEMBLY PRIMARY SIDE



COMPANY NAME : TEXAS INSTRUMENTS
DATE: FEBRUARY 07 2014
DESIGNED BY: TESSOLVE
PART NO/CARD REF: CC31XXEMUBOOST Rev 3.0
FILM LAYER: ASSEMBLY SECONDARY SIDE

D

C

B

A

D

C

B

A

8

7

6

1

8

7

6

5

4

3

2

1

STACK UP

	LAYER 01-TOP SIDE
	LAYER 02 - GND PLANE
	LAYER 03 - PWR PLANE
	LAYER 04 - BOTTOM

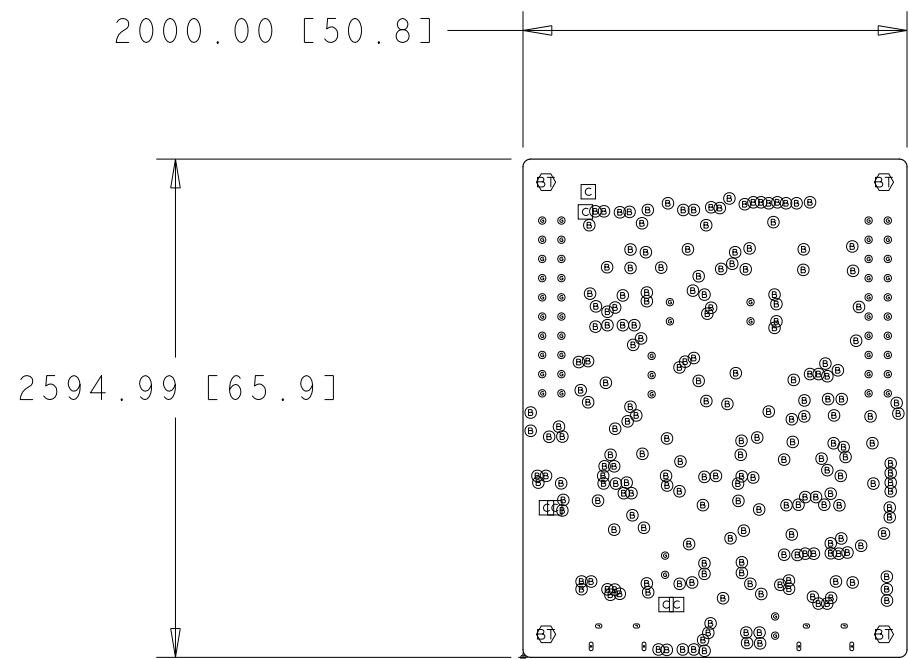
BOARD THICKNESS : 1.4 mm(+/- 0.1mm)

SECTION A-A

NO SCALE

GENERAL NOTES-- UNLESS OTHERWISE SPECIFIED:

1. FABRICATE PER IPC-6012A CLASS 2
2. SURFACE FINISH : ENIG
3. MATERIAL: FR4
4. COPPER WT: 1 Oz
5. ALL VIAS TO BE TENTED.
6. SOLDER MASK CLEARANCE IS GIVEN SAME AS PAD SIZE EXCEPT FIDUCIAL VENDOR SHALL MODIFY THE MASK CLEARANCE AS PER THE REQUIRED MANUFACTURING TOLERANCEANCE
7. SOLDER MASK COLOUR : RED



DRILL CHART: TOP to BOTTOM				
ALL UNITS ARE IN MILS				
FIGURE	SIZE	TOLERANCE	PLATED	QTY
•	12.0	+3.0/-3.0	PLATED	215
◻	20.0	+3.0/-3.0	PLATED	6
•	38.0	+3.0/-3.0	PLATED	51
⊙	125.9843	+2.0/-2.0	NON-PLATED	4
•	33.4646x21.6535	+3.0/-3.0	PLATED	4
•	45.2756x19.685	+3.0/-3.0	PLATED	4

COMPANY NAME : TEXAS INSTRUMENTS
DATE: FEBRUARY 07 2014
DESIGNED BY: TESSOLVE
PART NO/CARD REF: CC31XXEMUBOOST Rev 3.0
FILM LAYER: FABRICATION DRAWING

UNLESS OTHERWISE SPECIFIED ALL DIMENSIONS ARE IN <input type="checkbox"/> INCHES <input checked="" type="checkbox"/> MILLIMETERS	TEXAS INSTRUMENTS		
	FABRICATION DRAWING CC31XX_FTDI_DBG_3.0		
DATE FEBRUARY 07 2014		PART NUMBER CC31XXEMUBOOST	REV 3.0

CAD

DATA

DO NOT MANUALLY

UPDATE