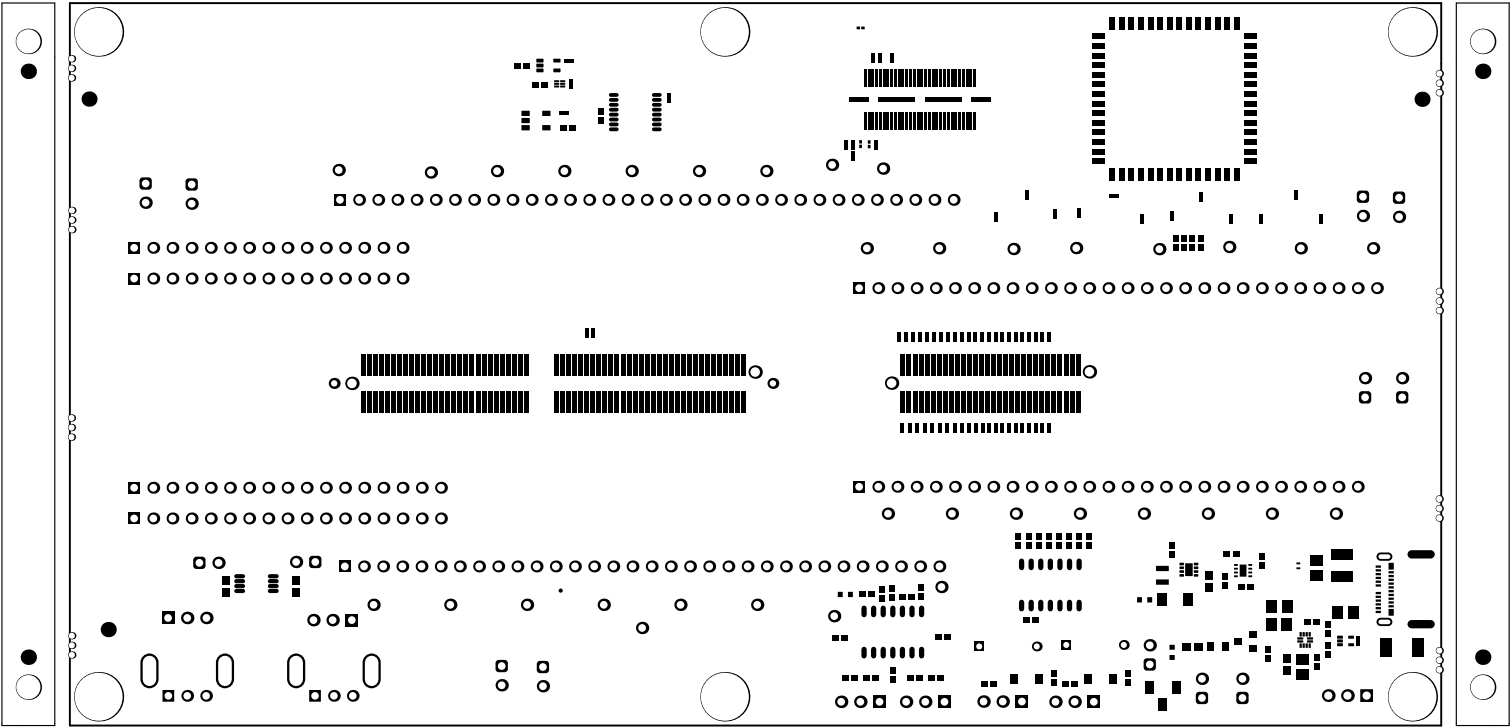
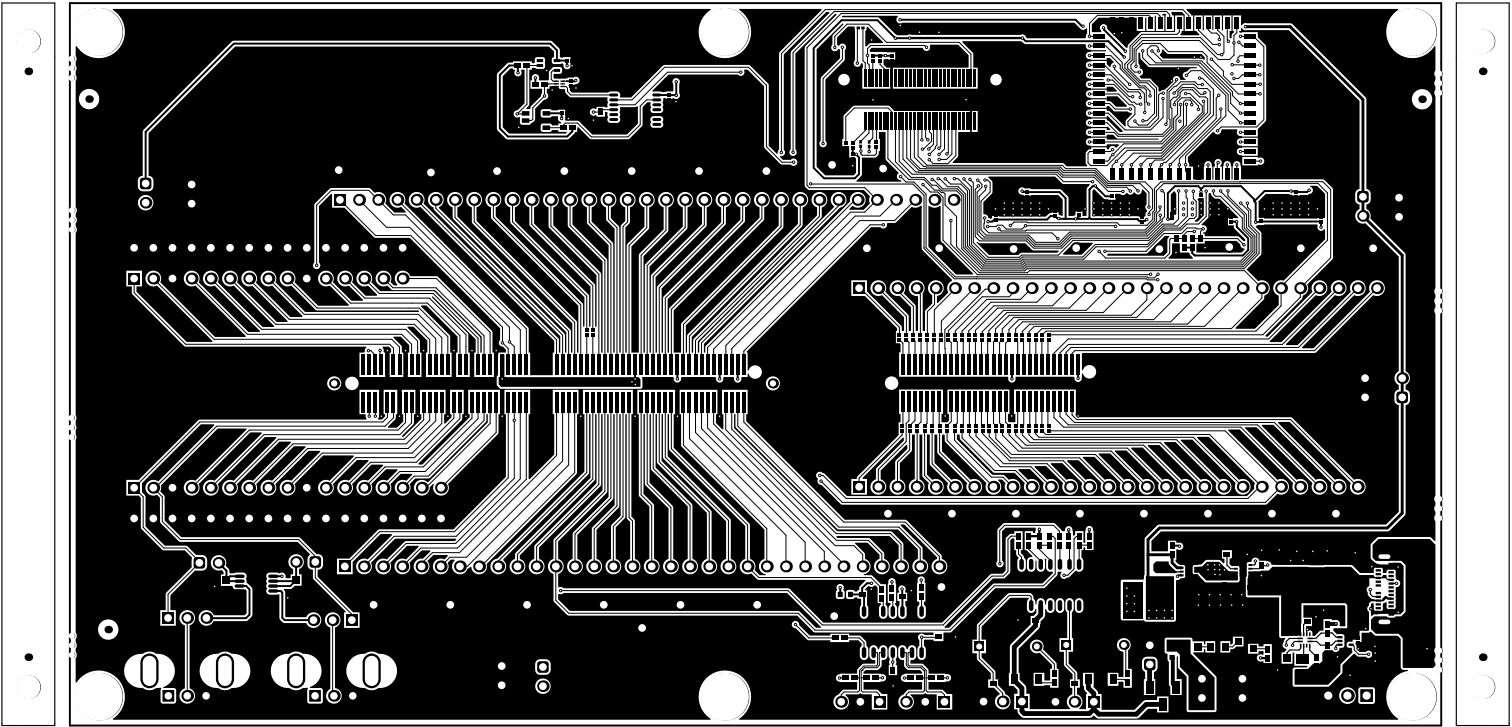


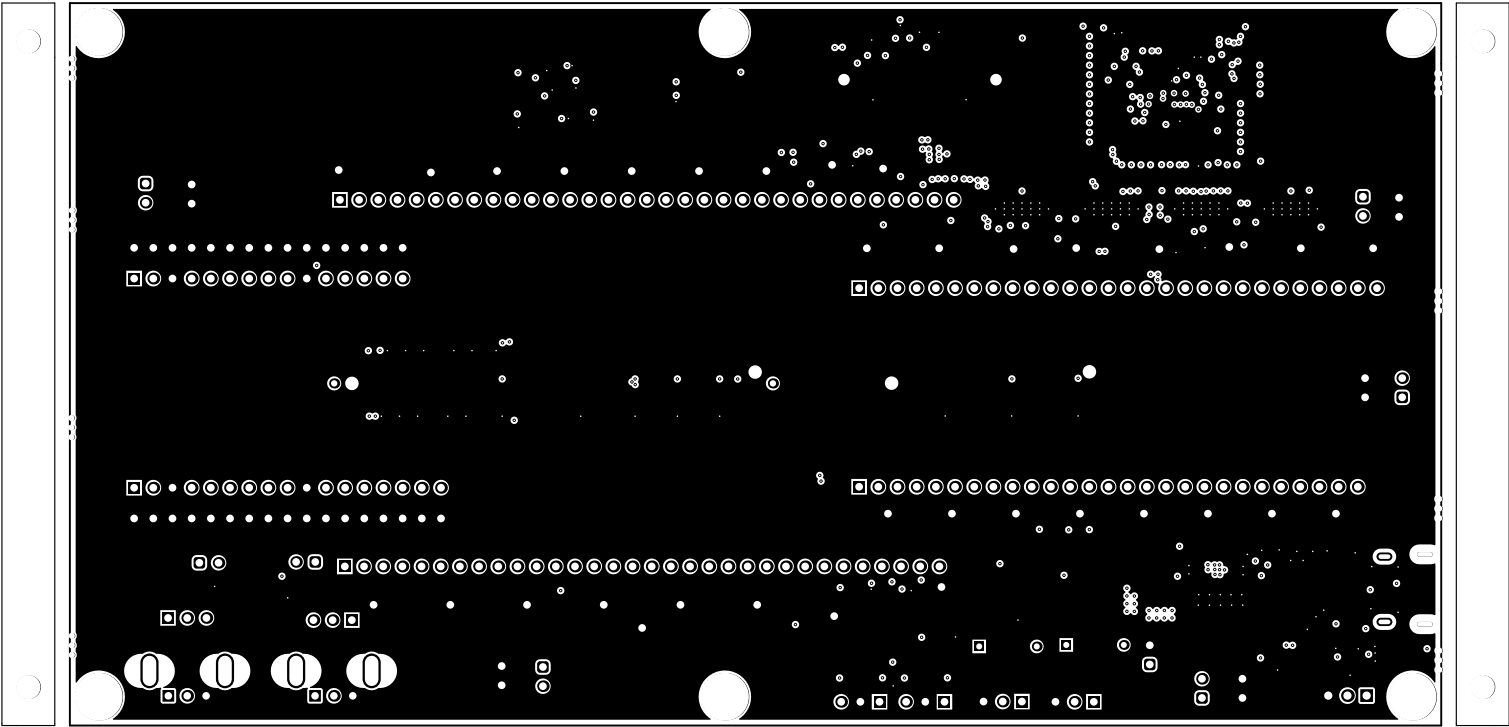
ALL ARTWORK VIEWED FROM TOP SIDE	BOARD #: PROC148	REV: A	SUN REV: Not in version control
LAYER NAME = Top Overlay	TID #: N/A		
PLOT NAME = Top Overlay	GENERATED : 11/3/2022 10:30:27 AM	TEXAS INSTRUMENTS	



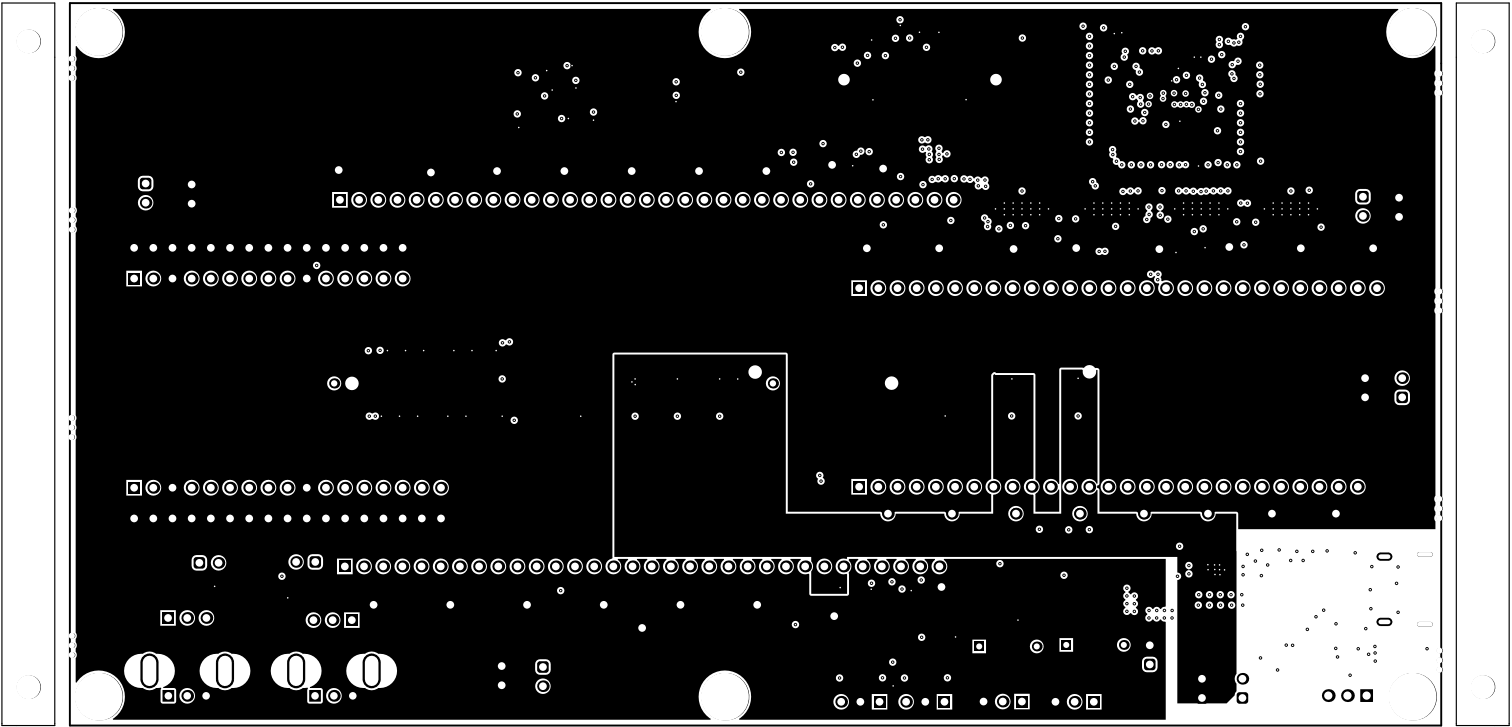
ALL ARTWORK VIEWED FROM TOP SIDE	BOARD #: PROC148	REV: A	SUN REV: Not in version control
LAYER NAME = Top Solder	TID #: N/A		
PLOT NAME = Top Solder Mask	GENERATED : 11/3/2022 10:30:27 AM	TEXAS INSTRUMENTS	



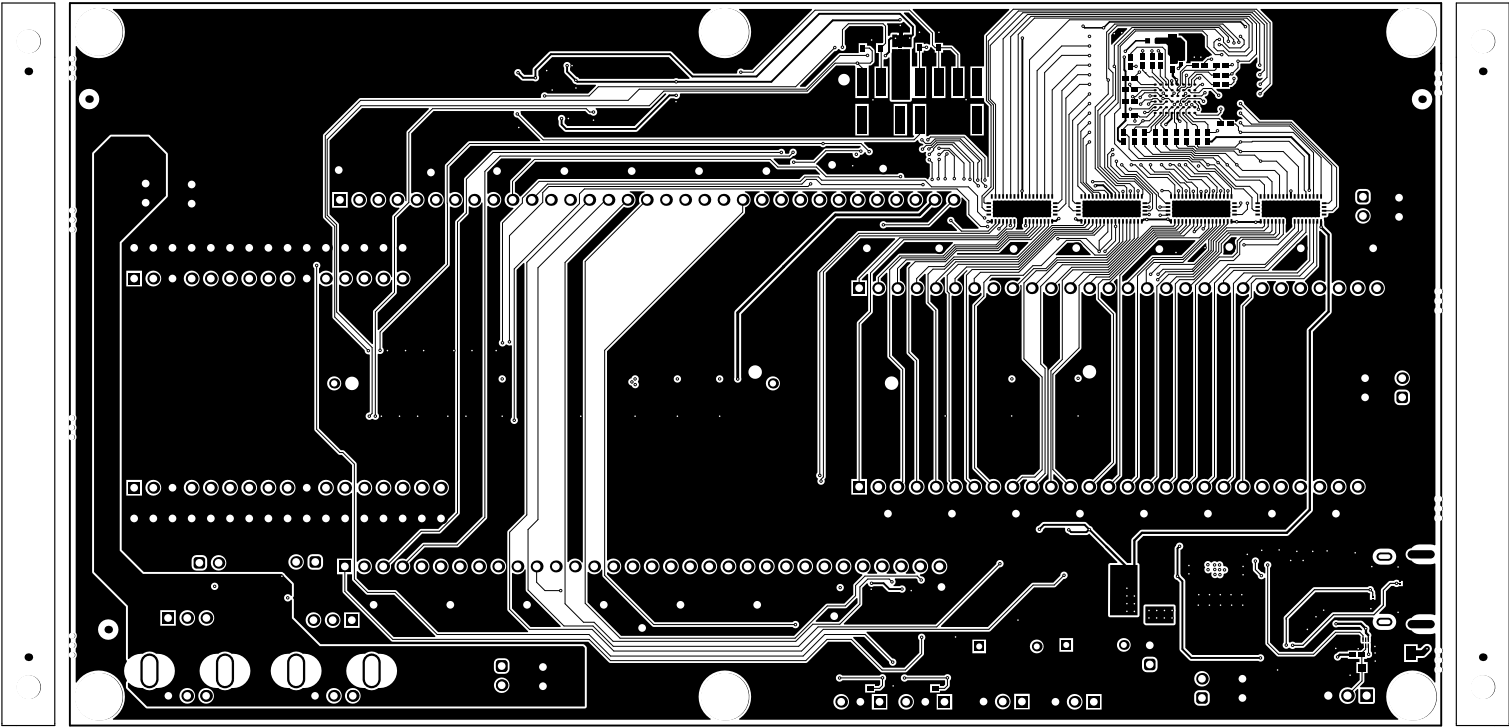
ALL ARTWORK VIEWED FROM TOP SIDE	BOARD #: PROC148	REV: A	SUN REV: Not in version control
LAYER NAME = Top Layer	TID #: N/A		
PLOT NAME = Top Layer	GENERATED : 11/3/2022 10:30:28 AM	TEXAS INSTRUMENTS	



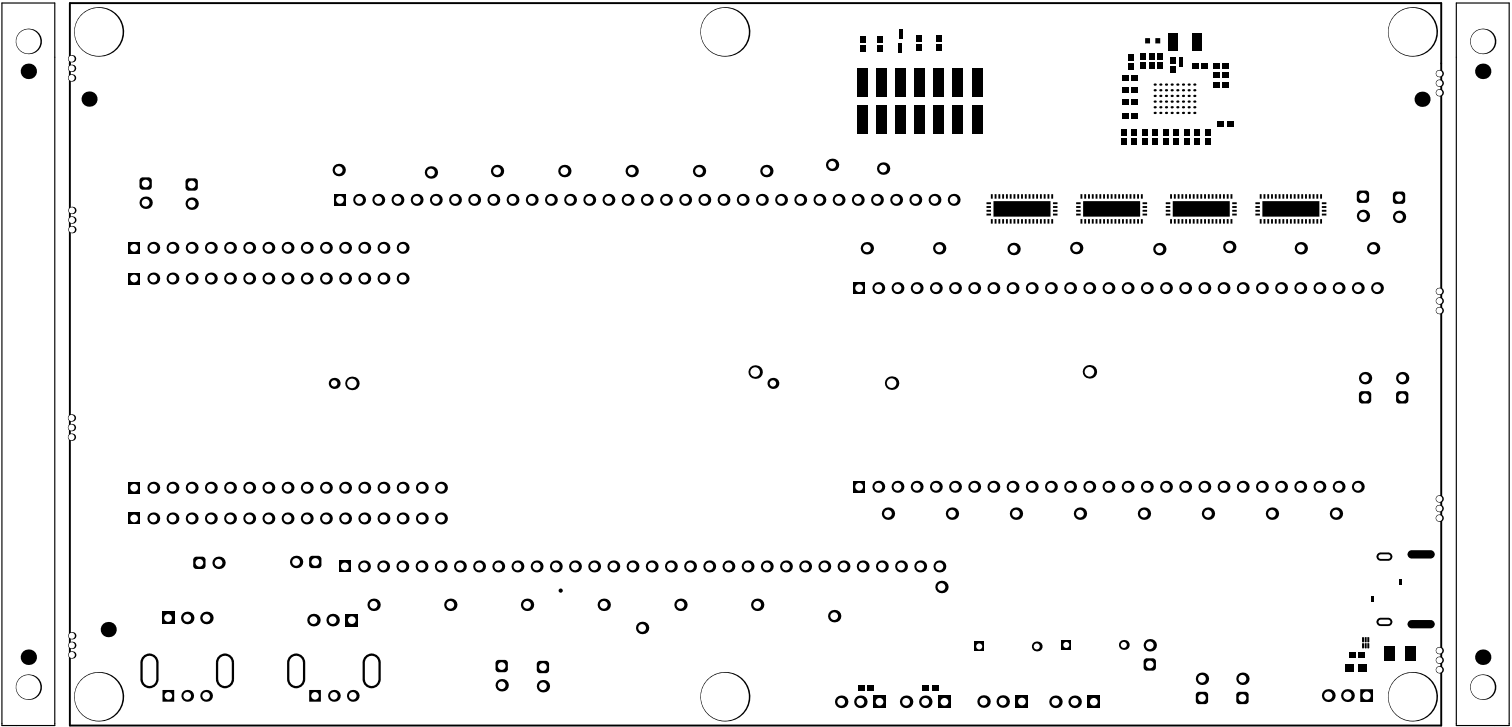
ALL ARTWORK VIEWED FROM TOP SIDE	BOARD #: PROC148	REV: A	SUN REV: Not in version control
LAYER NAME = GND01	TID #: N/A		
PLOT NAME = Signal Layer 1	GENERATED : 11/3/2022 10:30:28 AM	TEXAS INSTRUMENTS	



ALL ARTWORK VIEWED FROM TOP SIDE	BOARD #: PROC148	REV: A	SUN REV: Not in version control
LAYER NAME = PWR/GND02	TID #: N/A		
PLOT NAME = Signal Layer 2	GENERATED : 11/3/2022 10:30:28 AM	TEXAS INSTRUMENTS	



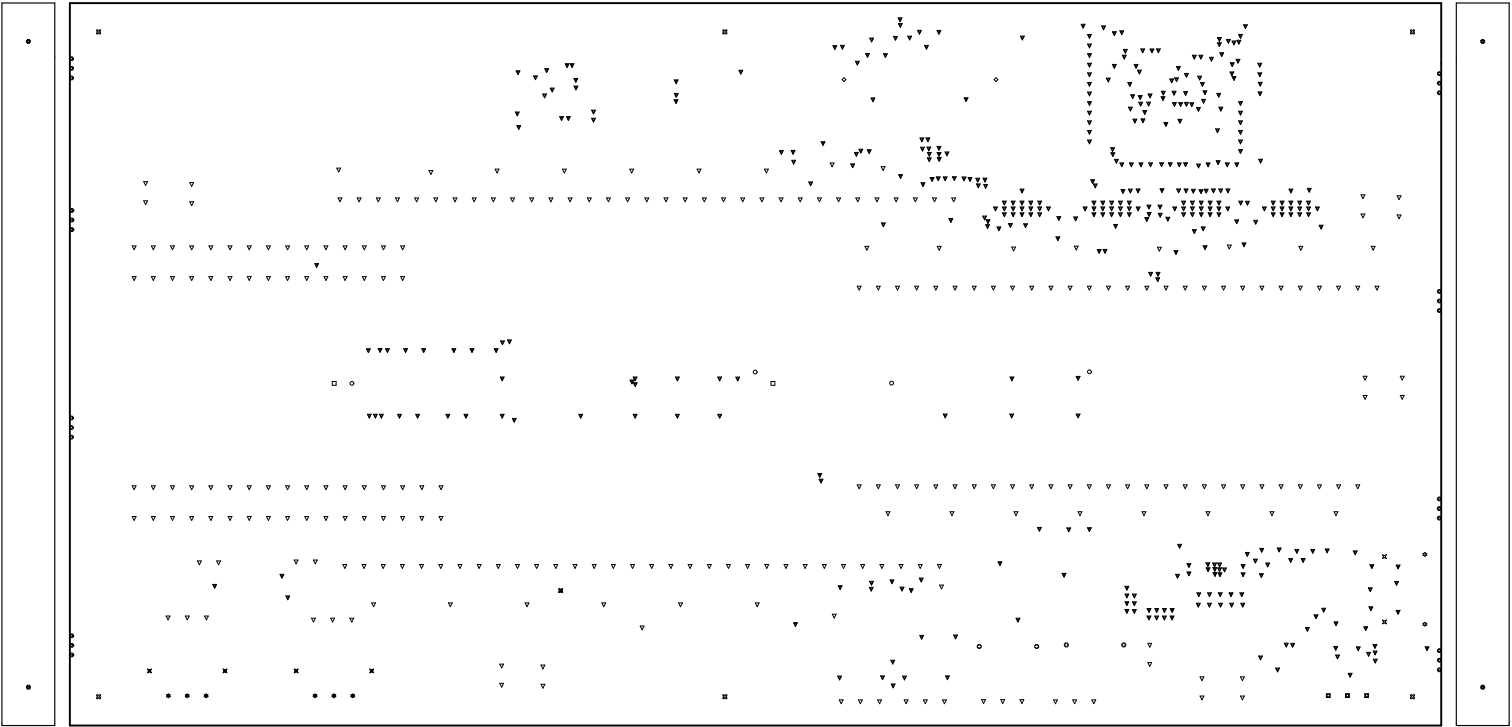
ALL ARTWORK VIEWED FROM TOP SIDE	BOARD #: PROC148	REV: A	SUN REV: Not in version control
LAYER NAME = Bottom Layer	TID #: N/A		
PLOT NAME = Bottom Layer	GENERATED : 11/3/2022 10:30:29 AM	TEXAS INSTRUMENTS	



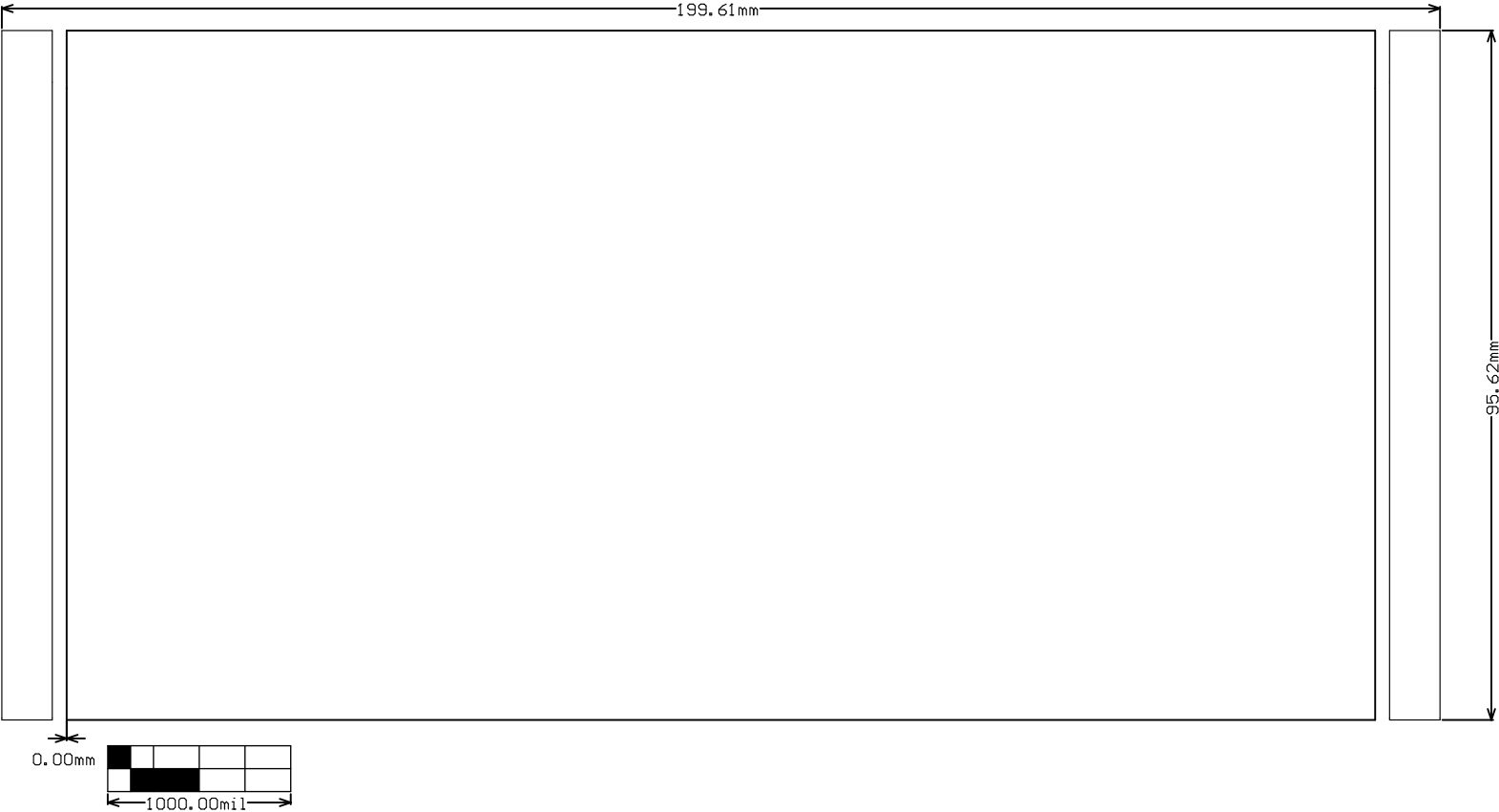
ALL ARTWORK VIEWED FROM TOP SIDE	BOARD #: PROC148	REV: A	SUN REV: Not in version control
LAYER NAME = Bottom Solder	TID #: N/A		
PLOT NAME = Bottom Solder Mask	GENERATED : 11/3/2022 10:30:29 AM	TEXAS INSTRUMENTS	

Symbol	Count	Hole Size	Plated	Drill Layer Pair	Hole Tolerance (+)	Hole Tolerance (-)	Hole Length
▽	422	8.00mil (0.203mm)	PTH	Top Layer - Bottom Layer	3.00mil (0.076mm)	3.00mil (0.076mm)	-
⌘	1	8.00mil (0.203mm)	PTH	Top Layer - Bottom Layer			-
⊗	4	31.50mil (0.800mm)	PTH	Top Layer - Bottom Layer	3.00mil (0.076mm)	3.00mil (0.076mm)	-
□	2	33.07mil (0.840mm)	PTH	Top Layer - Bottom Layer	3.00mil (0.076mm)	3.00mil (0.076mm)	-
✱	6	39.37mil (1.000mm)	PTH	Top Layer - Bottom Layer	3.00mil (0.076mm)	3.00mil (0.076mm)	-
▽	262	40.16mil (1.020mm)	PTH	Top Layer - Bottom Layer	3.00mil (0.076mm)	3.00mil (0.076mm)	-
▣	3	42.91mil (1.090mm)	PTH	Top Layer - Bottom Layer	3.00mil (0.076mm)	3.00mil (0.076mm)	-
⌘	2	62.99mil (1.600mm)	PTH	Top Layer - Bottom Layer	3.00mil (0.076mm)	3.00mil (0.076mm)	23.62mil (0.600mm)
✱	2	82.68mil (2.100mm)	PTH	Top Layer - Bottom Layer	3.00mil (0.076mm)	3.00mil (0.076mm)	23.62mil (0.600mm)
⌘	4	157.48mil (4.000mm)	PTH	Top Layer - Bottom Layer	3.00mil (0.076mm)	3.00mil (0.076mm)	70.87mil (1.800mm)
⊙	24	32.00mil (0.813mm)	NPTH	Top Layer - Bottom Layer	3.00mil (0.076mm)	3.00mil (0.076mm)	-
◇	2	40.16mil (1.020mm)	NPTH	Top Layer - Bottom Layer	3.00mil (0.076mm)	3.00mil (0.076mm)	-
○	4	50.00mil (1.270mm)	NPTH	Top Layer - Bottom Layer	3.00mil (0.076mm)	3.00mil (0.076mm)	-
⊗	4	126.00mil (3.200mm)	NPTH	Top Layer - Bottom Layer	3.00mil (0.076mm)	3.00mil (0.076mm)	-
⊗	6	250.00mil (6.350mm)	NPTH	Top Layer - Bottom Layer	3.00mil (0.076mm)	3.00mil (0.076mm)	-
	748 Total						

Slot definitions : Routed Path Length = Calculated from tool start centre position to tool end centre position.
Hole Length = Routed Path Length + Tool Size = Slot length as defined in the PCB layout



ALL ARTWORK VIEWED FROM TOP SIDE	BOARD #: PROC148	REV: A	SUN REV: Not in version control
LAYER NAME =	TID #: N/A		
PLOT NAME = Drill Drawing	GENERATED : 11/3/2022 10:30:30 AM		TEXAS INSTRUMENTS



ALL ARTWORK VIEWED FROM TOP SIDE	BOARD #: PROC148	REV: A	SUN REV: Not in version control
LAYER NAME = M2 Board Dimensions	TID #: N/A		
PLOT NAME = Board Dimensions	GENERATED : 11/3/2022 10:30:31 AM	TEXAS INSTRUMENTS	