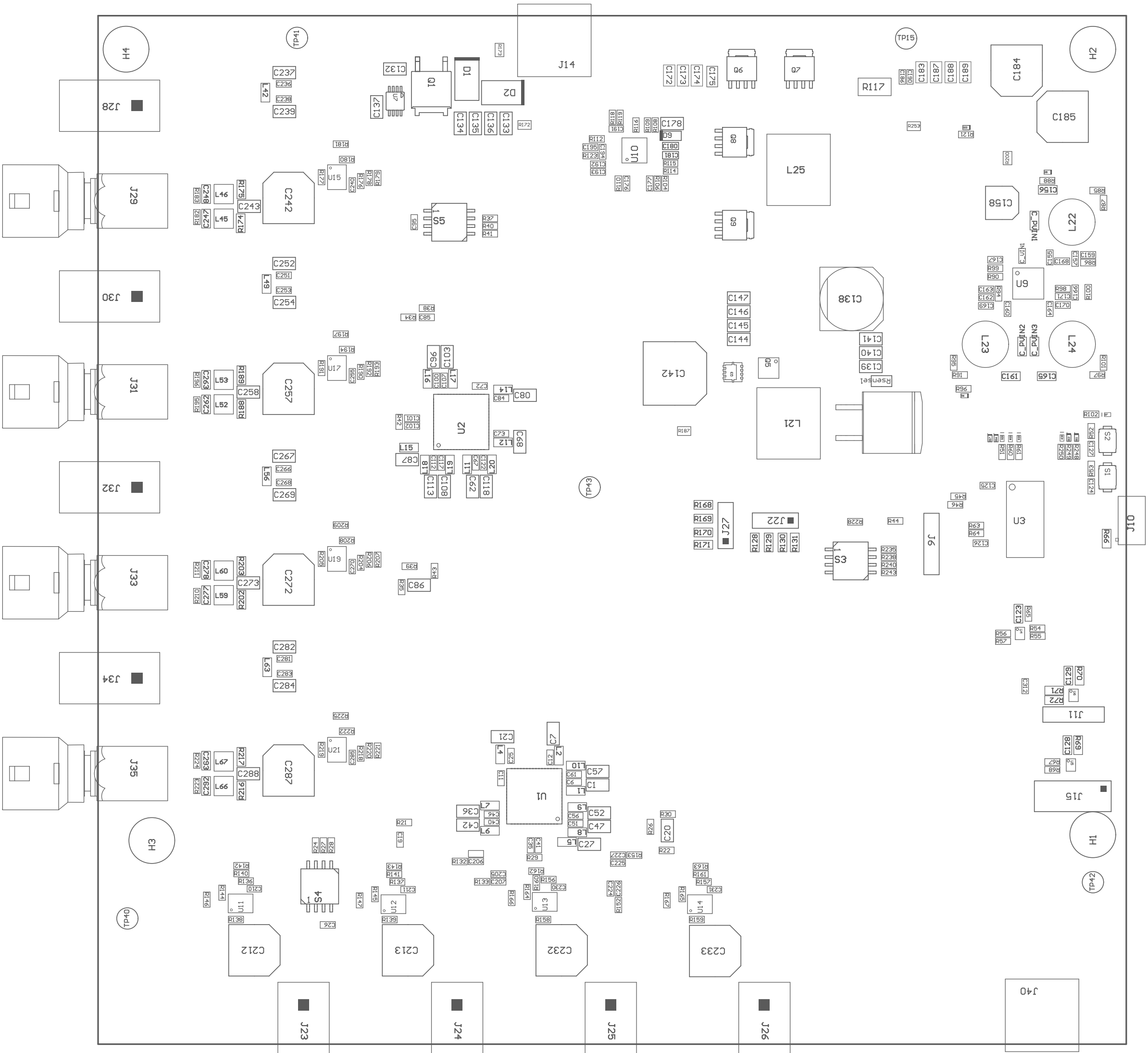


Z21 ■ Install label in silkscreened box after final wash. Text shall be 8 pt font. Text shall be per the Label Table in the PDF schematic.
Z22 ■ These assemblies are ESD sensitive, ESD precautions shall be observed.
Z23 ■ These assemblies must be clean and free from flux and all contaminants. Use of no clean flux is not acceptable.
Z24 ■ These assemblies must comply with workmanship standards IPC-A-610 Class 2, unless otherwise specified.



COMPONENTS MARKED 'DNP' SHOULD NOT BE POPULATED.
ASSEMBLY VARIANT: Populated_variant

| | | | |
|----------------------------------|----------------------------------|-------------------|--------------------------------|
| PCB VIEWED FROM TOP SIDE | BOARD #: 518520C | REV: C | SUN REV: Not In VersionControl |
| | TID #: N/A | | |
| PLOT NAME = Top Assembly Drawing | GENERATED : 1/14/2019 7:28:02 AM | TEXAS INSTRUMENTS | |



COMPONENTS MARKED 'DNP' SHOULD NOT BE POPULATED.

ASSEMBLY VARIANT: Populated_variant

| | | | |
|-------------------------------------|----------------------------------|-------------------|--------------------------------|
| PCB VIEWED FROM BOTTOM SIDE | BOARD #: 518520C | REV: C | SUN REV: Not In VersionControl |
| | TID #: N/A | | |
| PLOT NAME = Bottom Assembly Drawing | GENERATED : 1/14/2019 7:28:03 AM | TEXAS INSTRUMENTS | |