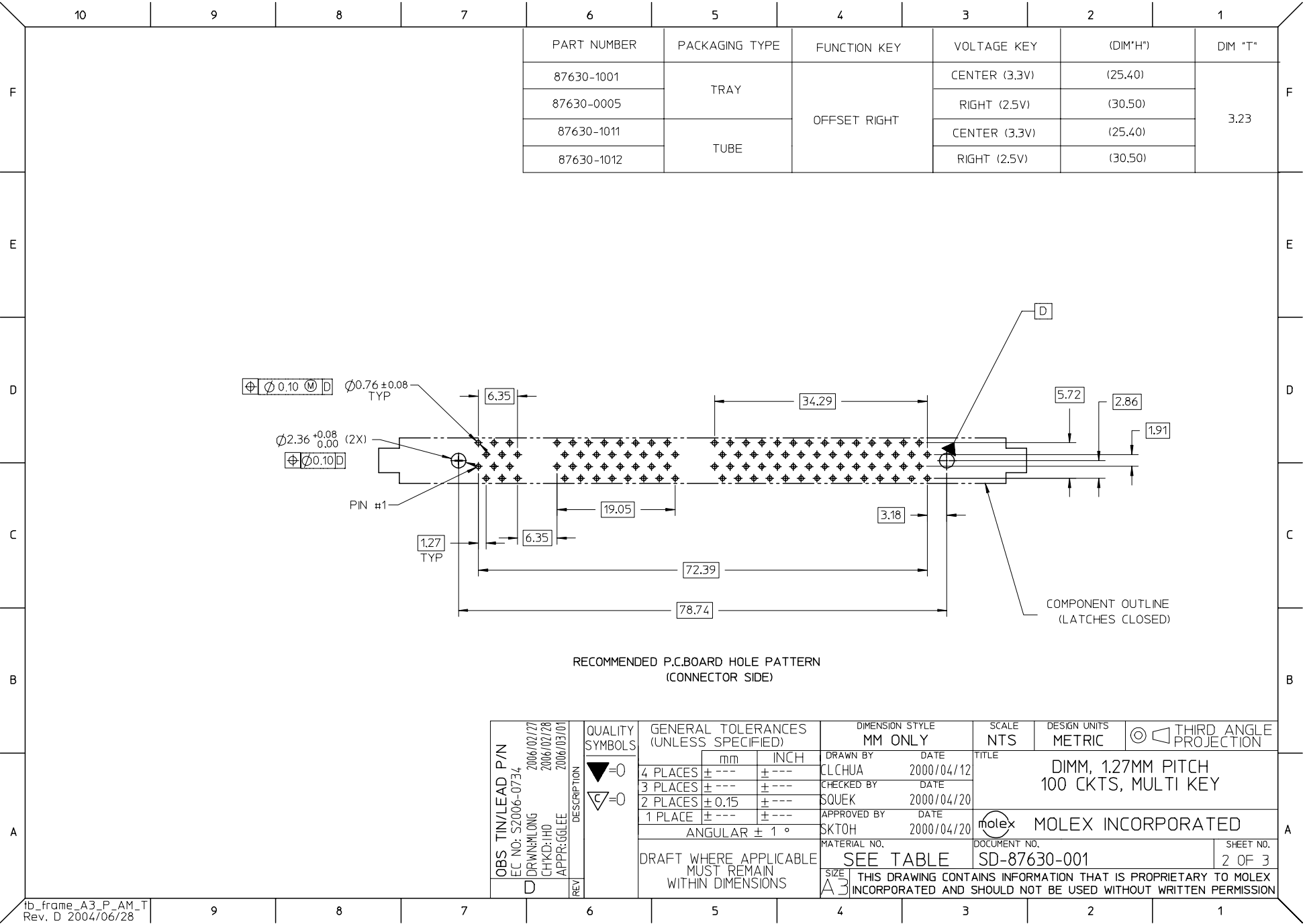


OBS. TIN/LEAD P/N EC NO: S2006-0734 DRAWN BY CHN:MILONG CHKD: LHO APPR: GGLLEE 2006/02/27 2006/02/28 2006/03/01	QUALITY SYMBOLS  ▽=0	GENERAL TOLERANCES (UNLESS SPECIFIED)	DIMENSION STYLE MM ONLY		SCALE NTS	DESIGN UNITS METRIC	THIRD ANGLE PROJECTION
			DRAWN BY CLCHUA	DATE 2000/04/12	TITLE DIMM, 1.27MM PITCH 100 CKTS, MULTI KEY		
			CHECKED BY SQUEK	DATE 2000/04/20			
			APPROVED BY SKTOH	DATE 2000/04/20	MOLEX MOLEX INCORPORATED		
D	REV	DRAFT WHERE APPLICABLE MUST REMAIN WITHIN DIMENSIONS	MATERIAL NO.		DOCUMENT NO.		SHEET NO.
			SEE TABLE		SD-87630-001		1 OF 3
THIS DRAWING CONTAINS INFORMATION THAT IS PROPRIETARY TO MOLEX INCORPORATED AND SHOULD NOT BE USED WITHOUT WRITTEN PERMISSION							



10 9 8 7 6 5 4 3 2 1

F

E

D

C

B

A

F

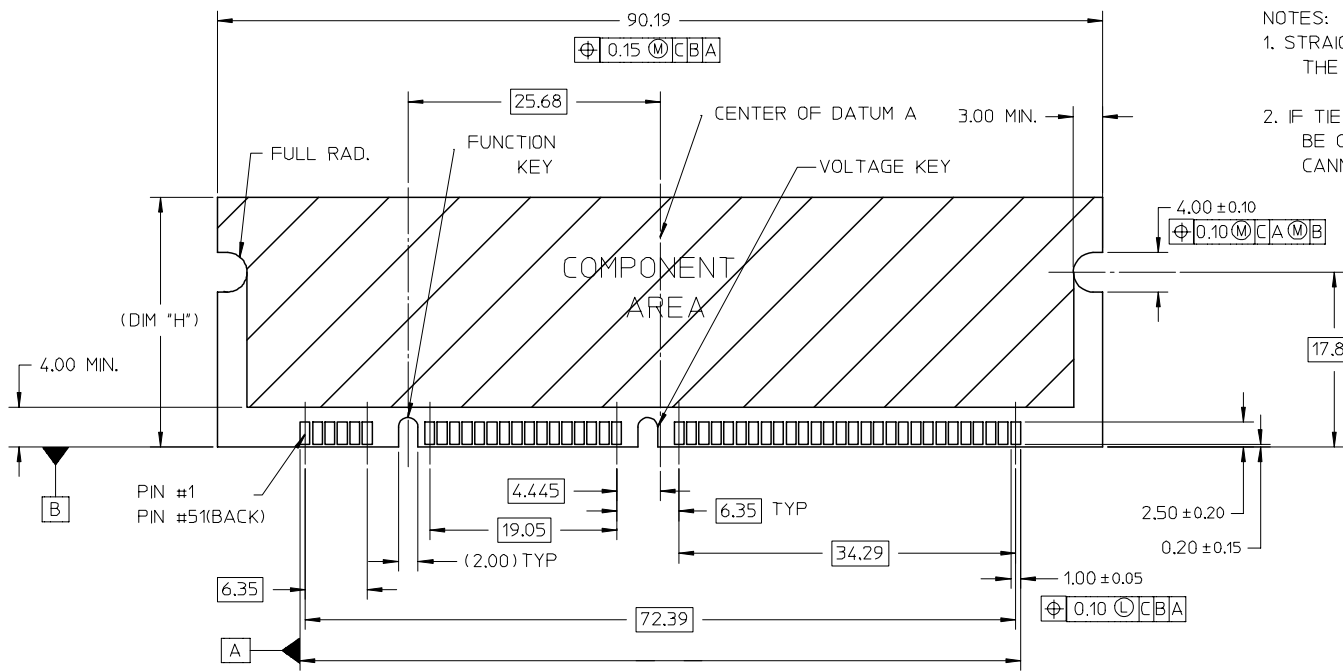
E

D

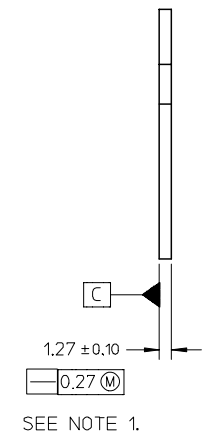
C

B

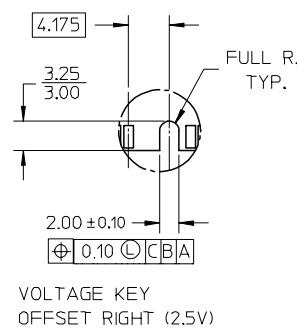
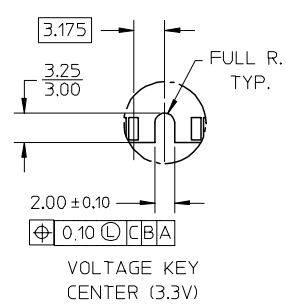
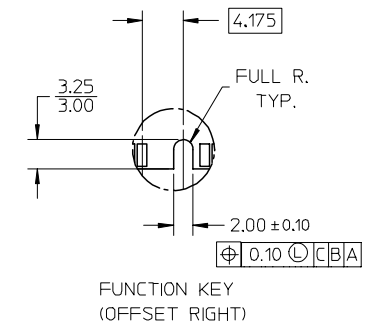
A



- NOTES:
1. STRAIGHTNESS OF MODULE APPLIES TO THE AREA FROM THE BOTTOM OF THE CARD UP 4.00 MM.
  2. IF TIE BARS ARE ATTACHED TO PADS, THE TIE BAR SHOULD BE ON THE INTERNAL LAYER, SO THAT THE REMNANT CANNOT CAUSE DAMAGE TO THE CONTACTS.



(OUTSIDE EDGE OF END PADS)  
RECOMMENDED MODULE LAYOUT  
100 CKT 3.3V UNBUFFERED



OBS TIN/LEAD P/N EC NO: S2006-0734 DRWN:MLONG CHKD:HQ APPR:GGLLEE REV D	DESCRIPTION REV	QUALITY SYMBOLS <div>▽=0</div> <div>◻=0</div>	GENERAL TOLERANCES (UNLESS SPECIFIED)				DIMENSION STYLE MM ONLY		SCALE NTS	DESIGN UNITS METRIC	<div>THIRD ANGLE PROJECTION</div>	
					mm	INCH	DRAWN BY CLCHUA	DATE 2000/04/12	TITLE DIMM, 1.27MM PITCH 100 CKTS, MULTI KEY			
			4 PLACES		± ---	± ---	CHECKED BY SQUEK					DATE 2000/04/20
			3 PLACES		± ---	± ---	APPROVED BY SKTOH					DATE 2000/04/20
			2 PLACES		± 0.15	± ---	MATERIAL NO. SEE TABLE					DOCUMENT NO. SD-87630-001
			1 PLACE		± ---	± ---						
					ANGULAR ± 1 °		MOLEX INCORPORATED					
			DRAFT WHERE APPLICABLE MUST REMAIN WITHIN DIMENSIONS									
THIS DRAWING CONTAINS INFORMATION THAT IS PROPRIETARY TO MOLEX INCORPORATED AND SHOULD NOT BE USED WITHOUT WRITTEN PERMISSION												

9 8 7 6 5 4 3 2 1