

ADC0xD1520RB Reference Board

REFERENCE DESIGN

SPECIAL NOTES

These schematics reflect the current state of product development. This design had NOT yet been fully tested at the time these schematics were generated.

Since this product is in development, the user of this document is strongly advised to check for the latest revision.

Texas Instruments reserves the right to make changes to this product.

ALL parts labeled "NA" are NOT ASSEMBLED.

Print Instructions:

- To create a readable printout, we recommend to use A3 or 11x17" paper size.
- When printing from this PDF file, make sure to check the "Shrink to fit" box.

CONFIDENTIAL

THIS DOCUMENT CONTAINS INFORMATION PROPRIETARY TO TEXAS INSTRUMENTS CORPORATION. USE OR DISCLOSURE WITHOUT WRITTEN PERMISSION IS EXPRESSLY FORBIDDEN. COPYRIGHT 2011.

PRELIMINARY



TEXAS INSTRUMENTS
12500 TI Blvd.
Dallas, Texas 75243
USA
(972) 644-5580
www.ti.com

PROJECT NAME: ADC0xD1520RB Reference Board

PAGE TITLE
Title Page

DESIGNED: DATE:

DRAWN: DATE:

CHECKED: DATE: 07/25/2012

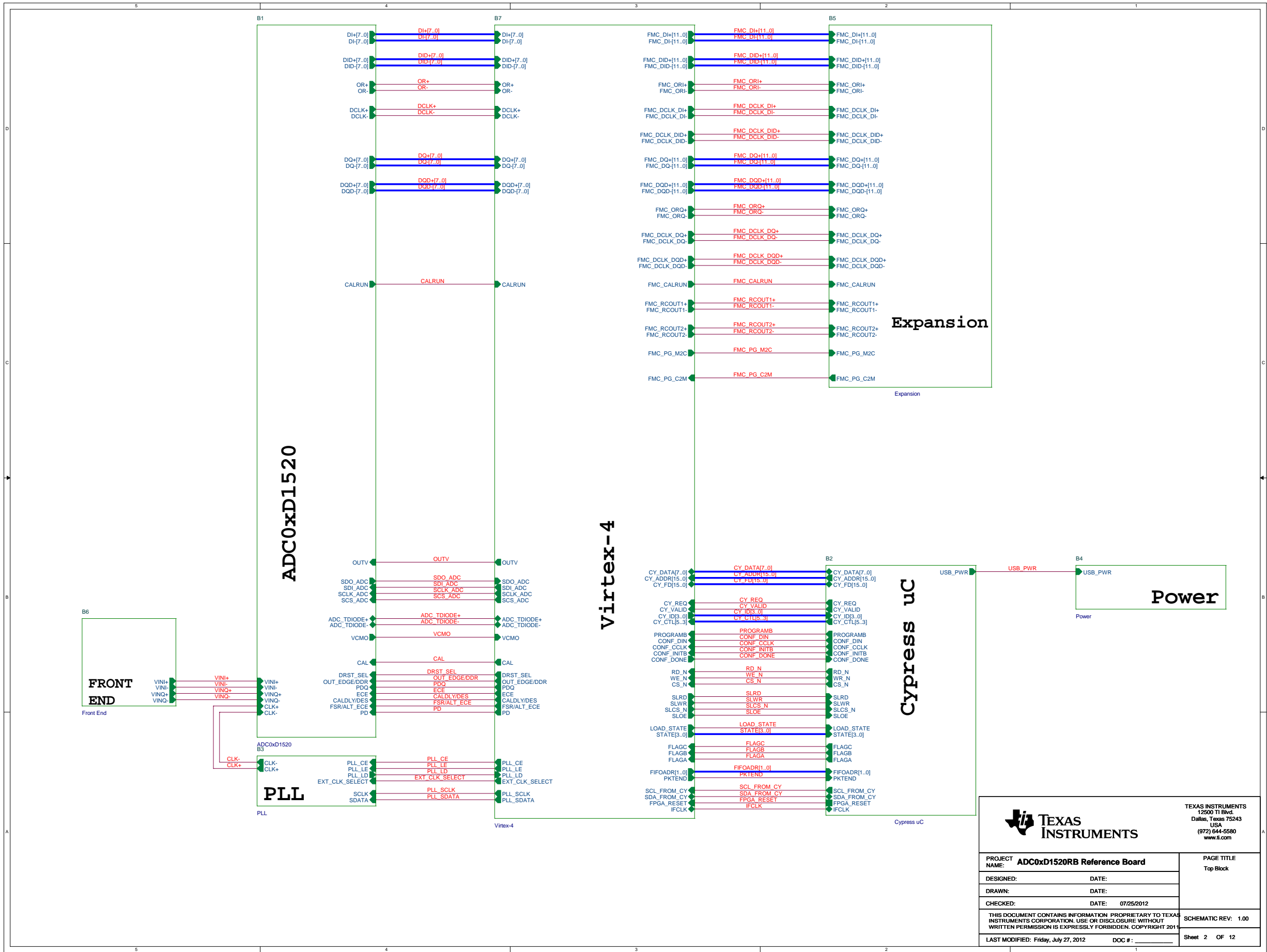
THIS DOCUMENT CONTAINS INFORMATION PROPRIETARY TO TEXAS INSTRUMENTS CORPORATION. USE OR DISCLOSURE WITHOUT WRITTEN PERMISSION IS EXPRESSLY FORBIDDEN. COPYRIGHT 2011.

SCHEMATIC REV: 1.00

LAST MODIFIED: Friday, July 27, 2012

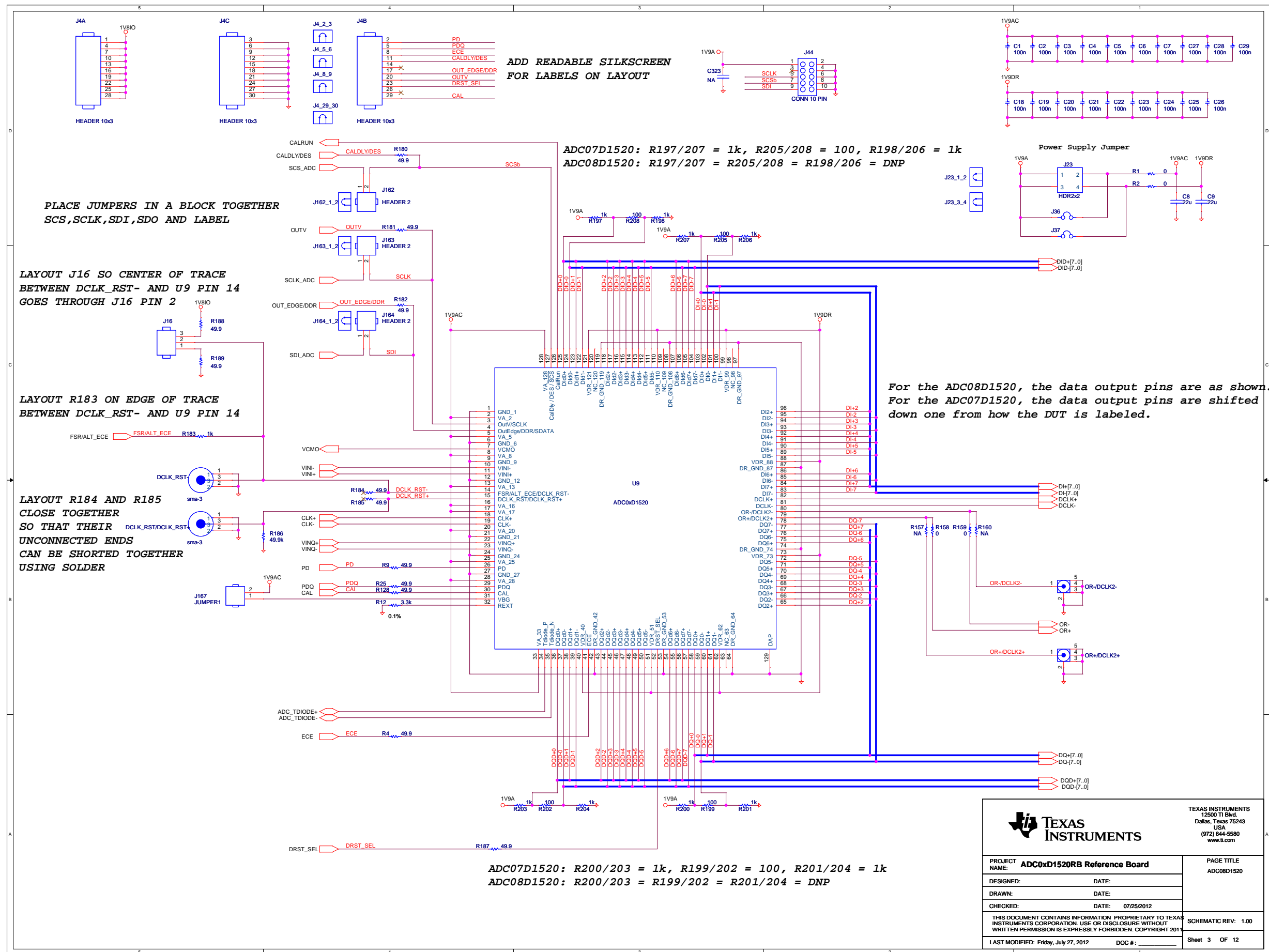
DOC #:

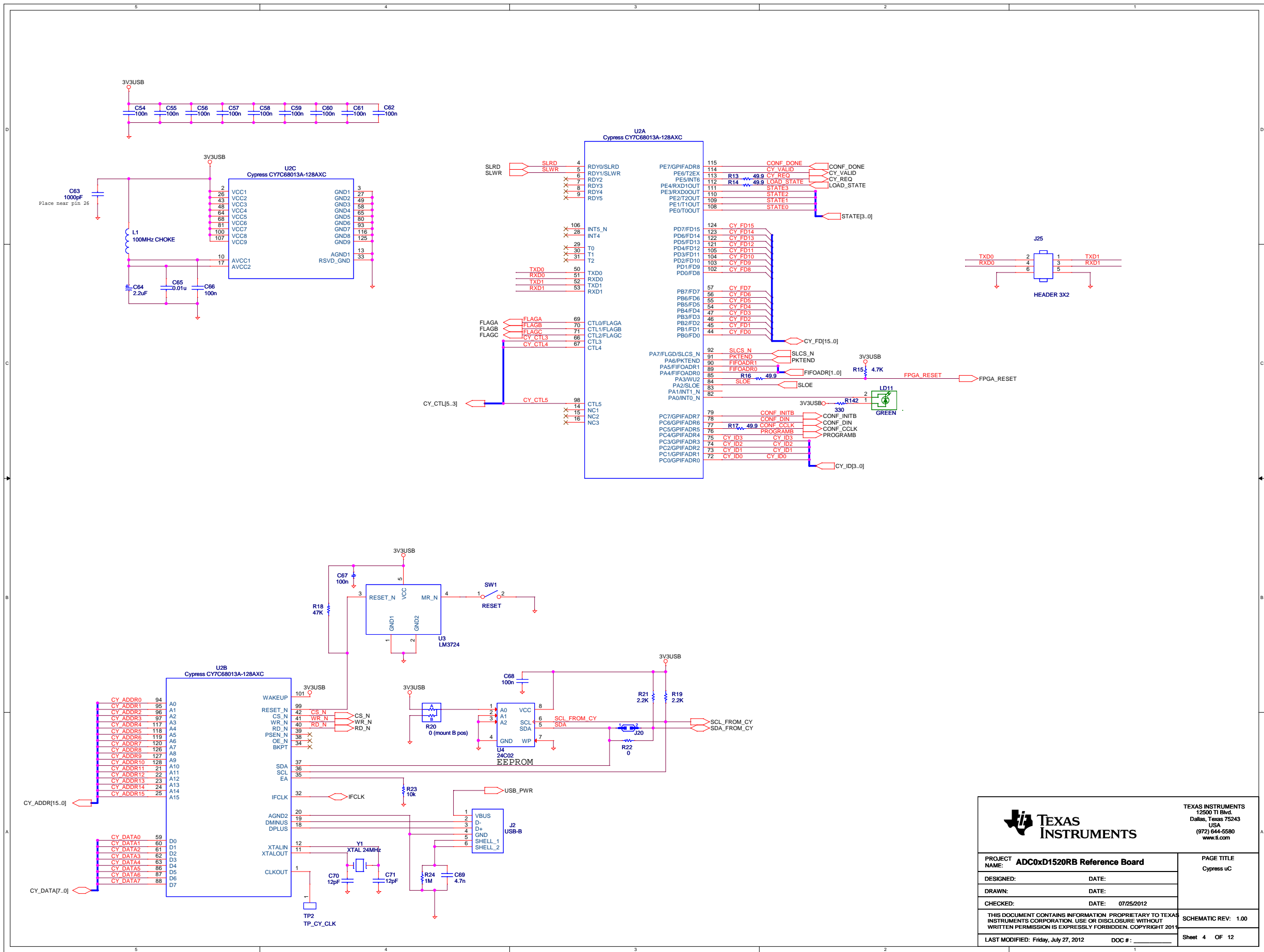
Sheet 1 OF 12



TEXAS INSTRUMENTS
12500 TI Blvd.
Dallas, Texas 75243
USA
(972) 644-6580
www.ti.com

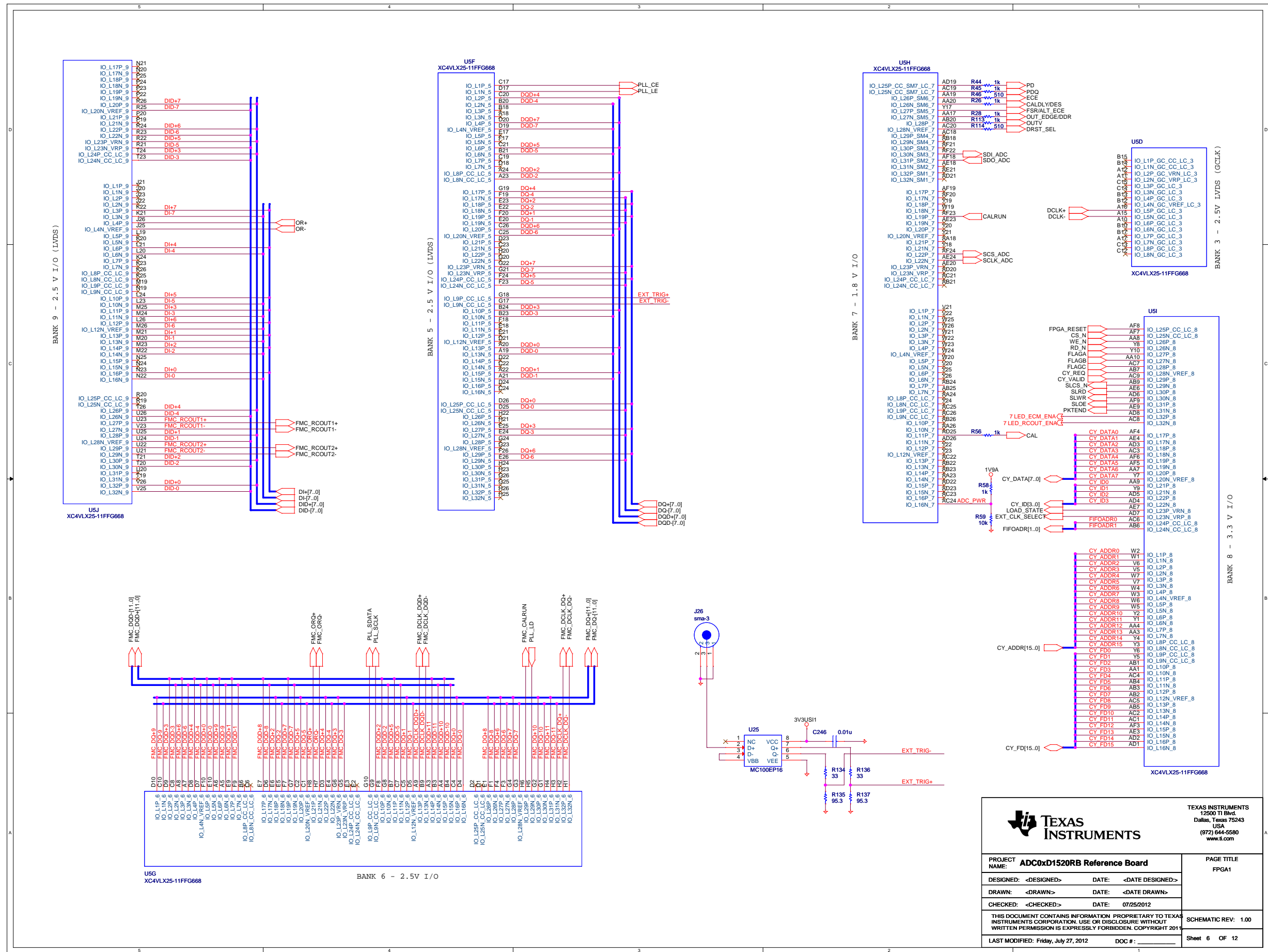
PROJECT NAME: ADC0xD1520RB Reference Board		PAGE TITLE Top Block
DESIGNED:	DATE:	
DRAWN:	DATE:	SCHEMATIC REV: 1.00
CHECKED:	DATE: 07/25/2012	
THIS DOCUMENT CONTAINS INFORMATION PROPRIETARY TO TEXAS INSTRUMENTS CORPORATION. USE OR DISCLOSURE WITHOUT WRITTEN PERMISSION IS EXPRESSLY FORBIDDEN. COPYRIGHT 2011		Sheet 2 OF 12
LAST MODIFIED: Friday, July 27, 2012 DOC #:		

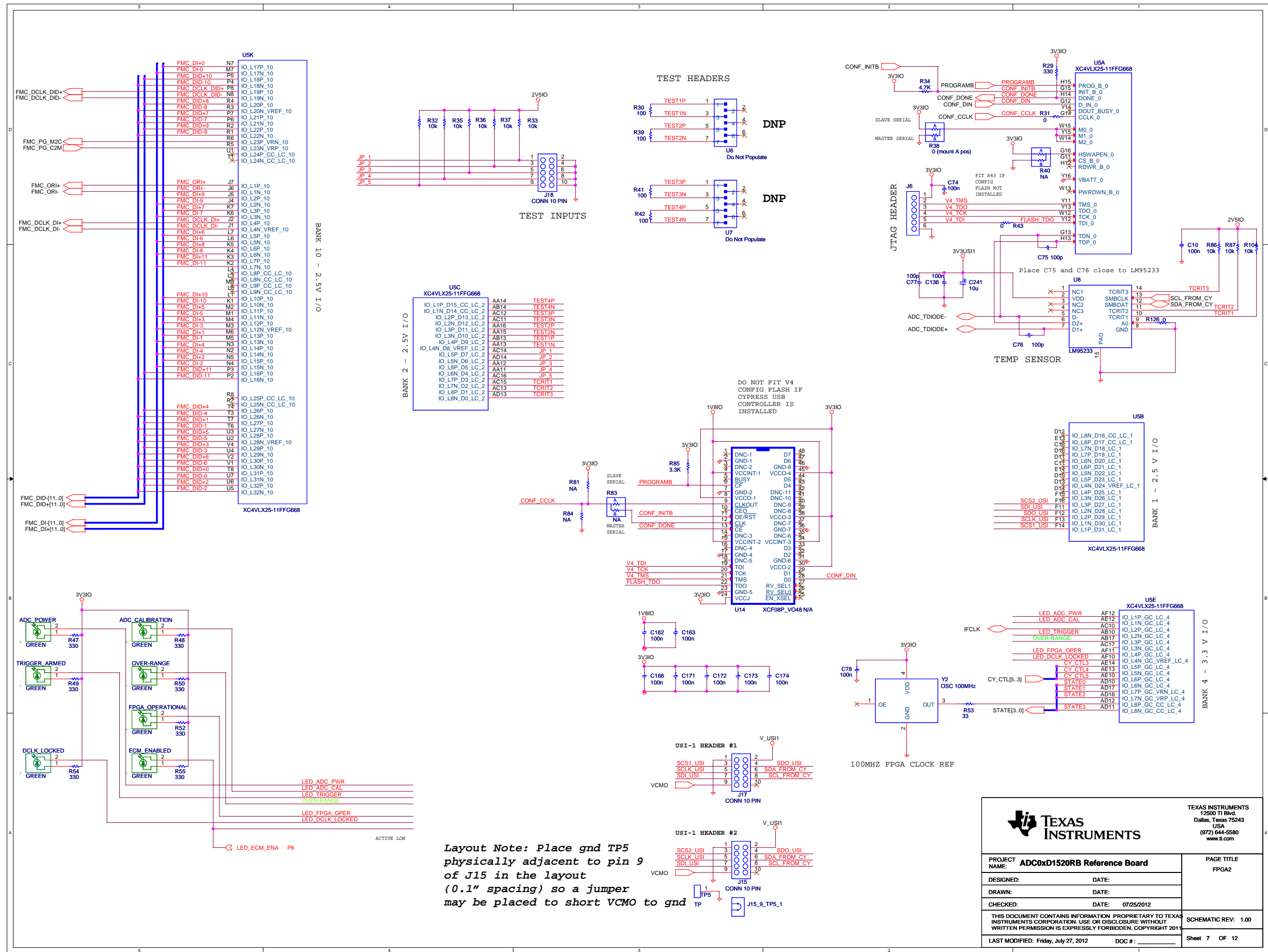


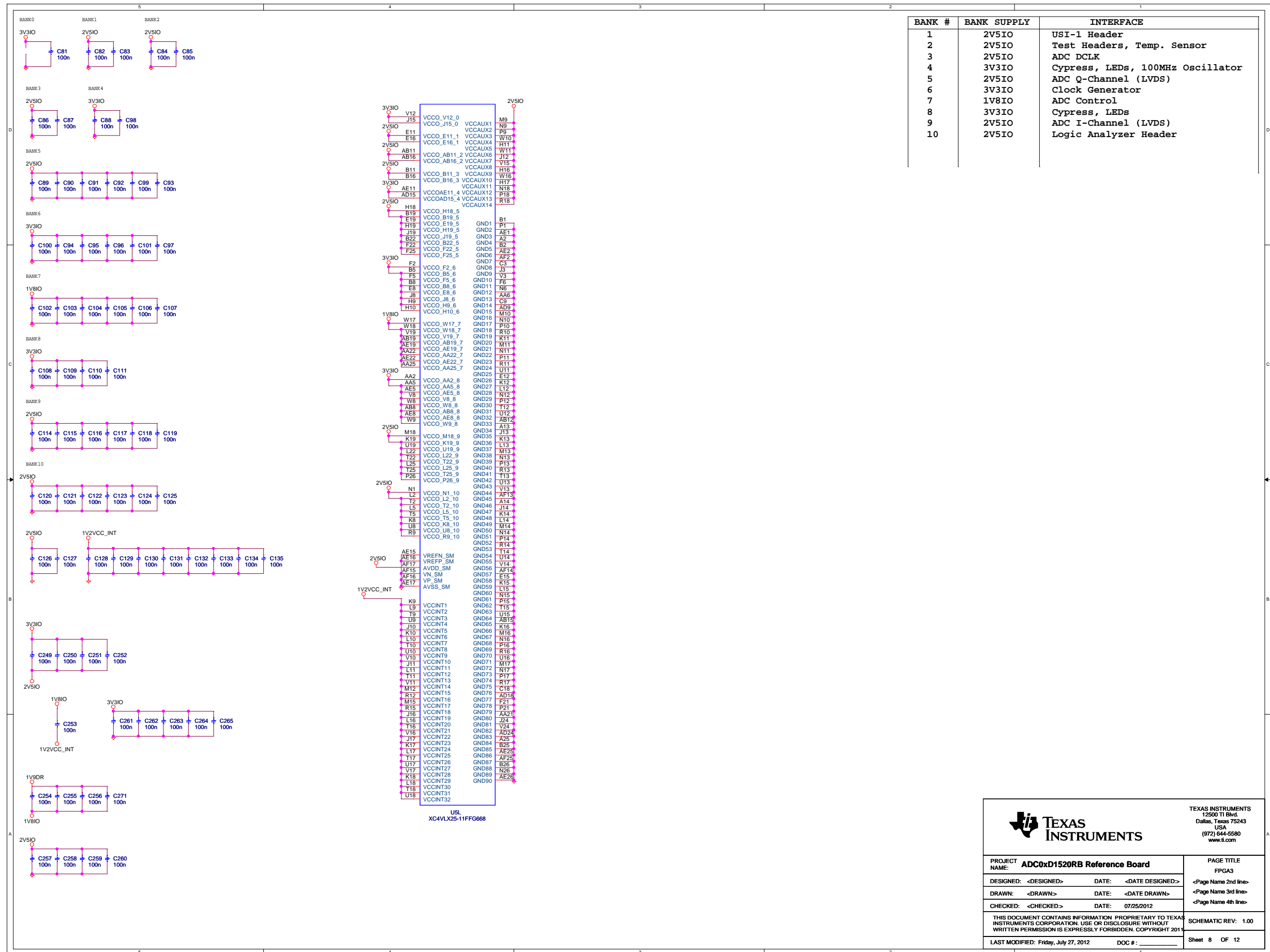


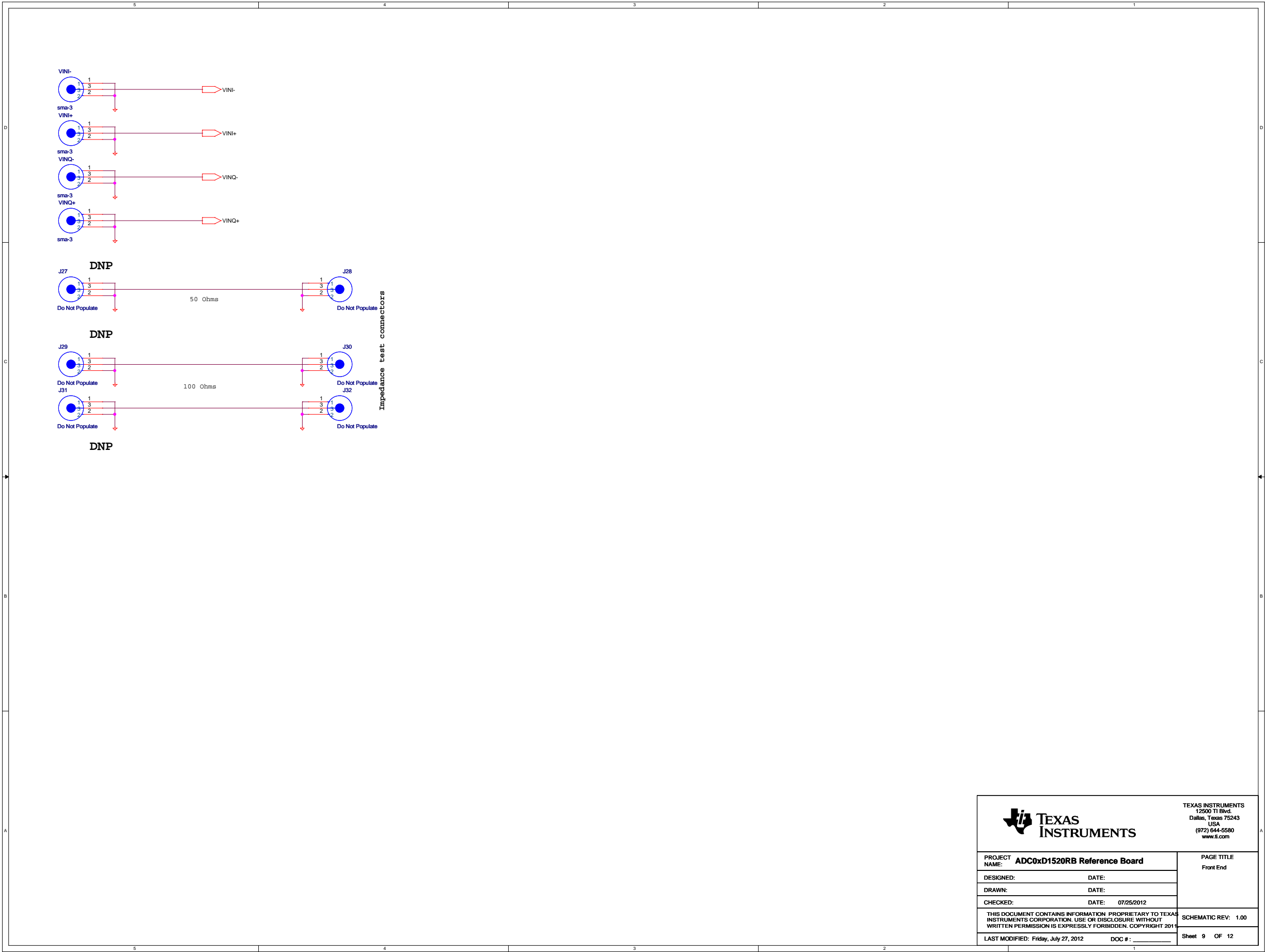
TEXAS INSTRUMENTS
12500 TI Blvd.
Dallas, Texas 75243
USA
(972) 644-6580
www.ti.com

PROJECT NAME: ADC0x1520RB Reference Board		PAGE TITLE Cypress uC	
DESIGNED:	DATE:		
DRAWN:	DATE:		
CHECKED:	DATE: 07/25/2012		
THIS DOCUMENT CONTAINS INFORMATION PROPRIETARY TO TEXAS INSTRUMENTS CORPORATION. USE OR DISCLOSURE WITHOUT WRITTEN PERMISSION IS EXPRESSLY FORBIDDEN. COPYRIGHT 2011		SCHEMATIC REV: 1.00	
LAST MODIFIED: Friday, July 27, 2012		DOC #: _____	
		Sheet 4 OF 12	









TEXAS INSTRUMENTS
12500 TI Blvd.
Dallas, Texas 75243
USA
(972) 644-5580
www.ti.com

PROJECT NAME: **ADC0x01520RB Reference Board**

DESIGNED: DATE:

DRAWN: DATE:

CHECKED: DATE: 07/25/2012

THIS DOCUMENT CONTAINS INFORMATION PROPRIETARY TO TEXAS INSTRUMENTS CORPORATION. USE OR DISCLOSURE WITHOUT WRITTEN PERMISSION IS EXPRESSLY FORBIDDEN. COPYRIGHT 2011

LAST MODIFIED: Friday, July 27, 2012

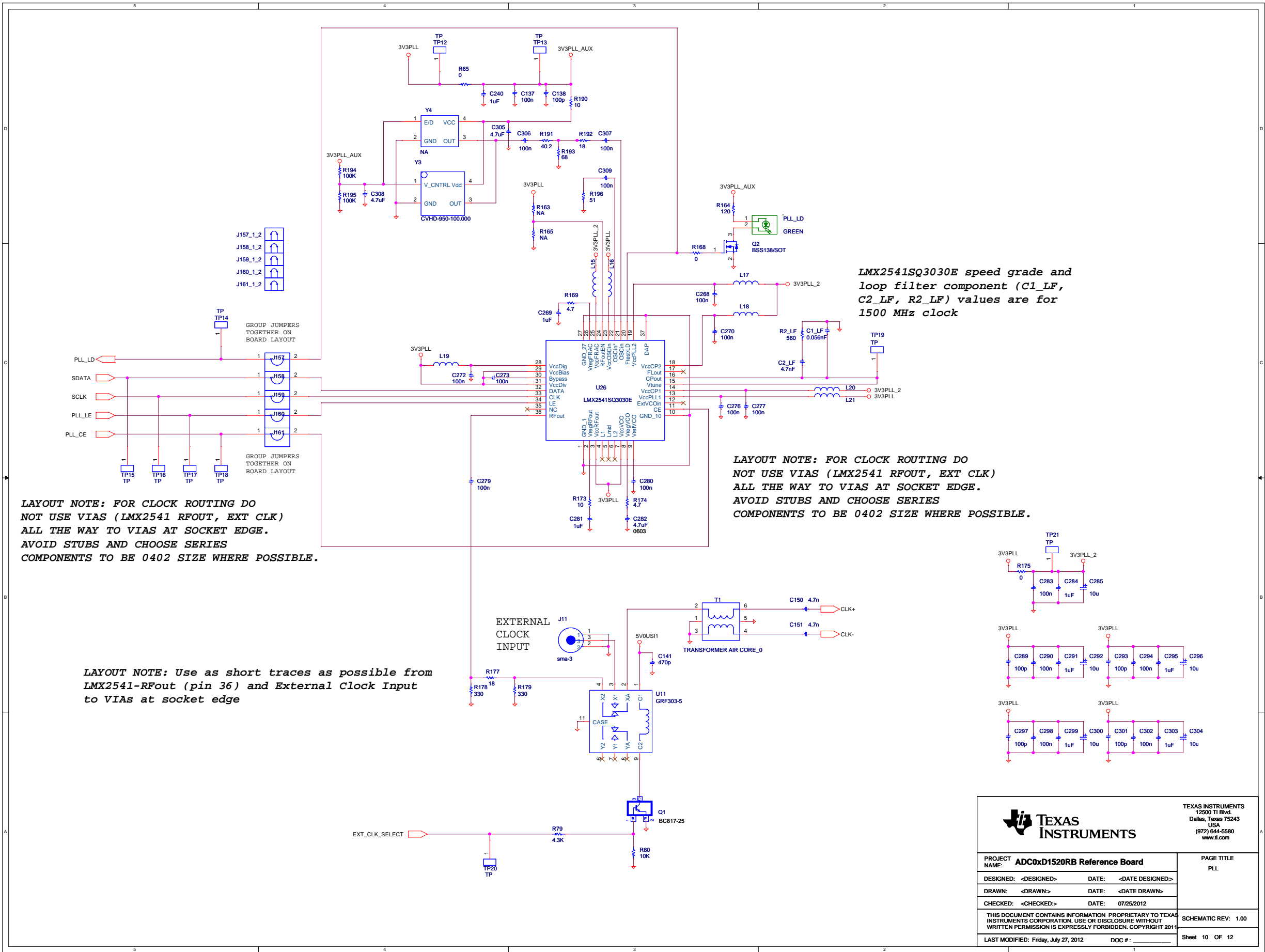
DOC #:

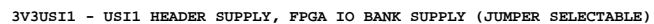
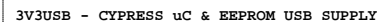
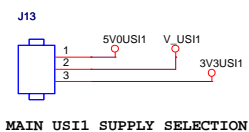
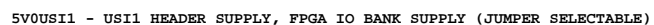
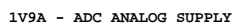
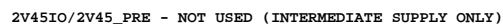
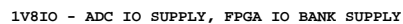
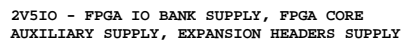
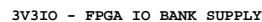
PAGE TITLE

Front End

SCHEMATIC REV: 1.00

Sheet 9 OF 12





TEXAS INSTRUMENTS
12500 TI Blvd.
Dallas, Texas 75243
USA
(972) 644-5580
www.ti.com

PROJECT NAME: ADC0xd1520RB Reference Board		PAGE TITLE Power1
DESIGNED:	DATE:	
DRAWN:	DATE:	
CHECKED:	DATE: 07/25/2012	
THIS DOCUMENT CONTAINS INFORMATION PROPRIETARY TO TEXAS INSTRUMENTS CORPORATION. USE OR DISCLOSURE WITHOUT WRITTEN PERMISSION IS EXPRESSLY FORBIDDEN. COPYRIGHT 2011		SCHEMATIC REV: 1.00
LAST MODIFIED: Friday, July 27, 2012 DOC # : _____		Sheet 11 OF 12

