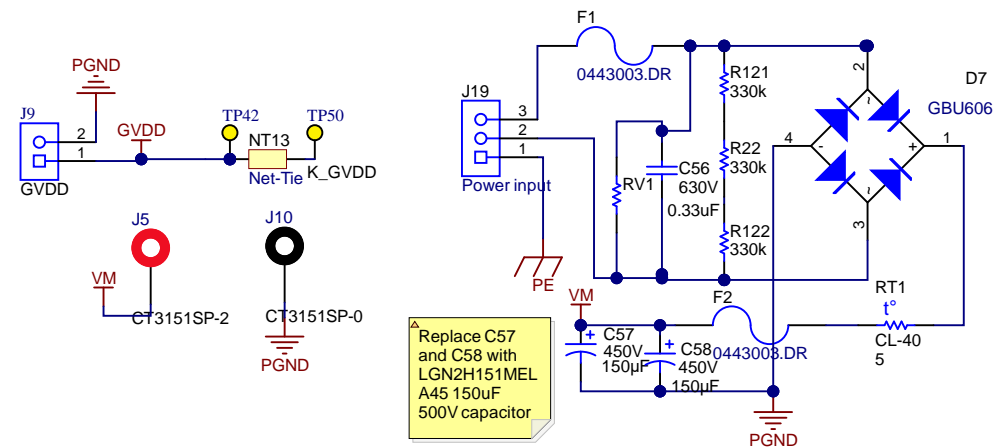
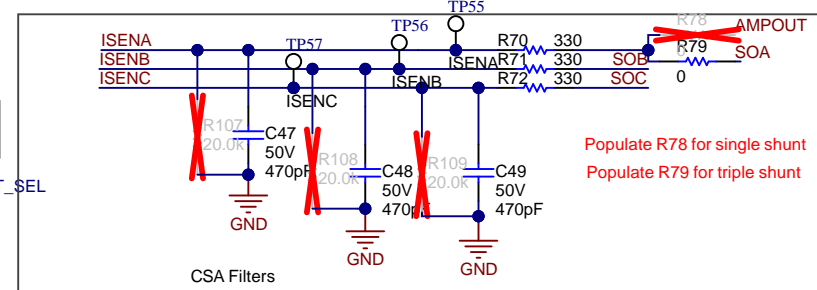
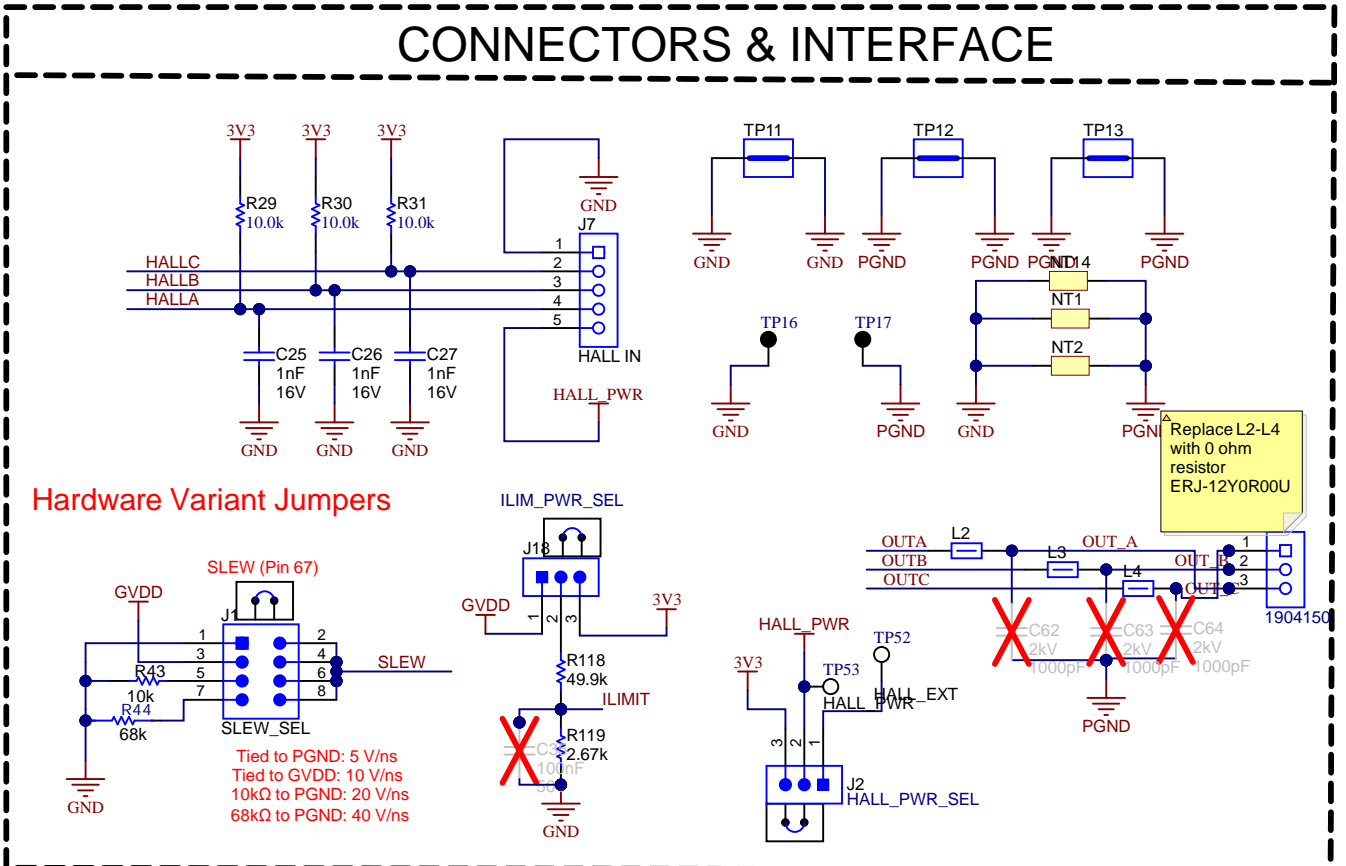
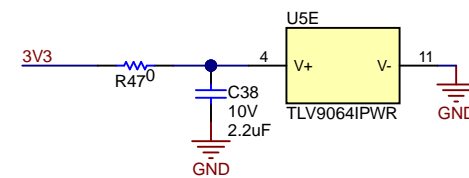
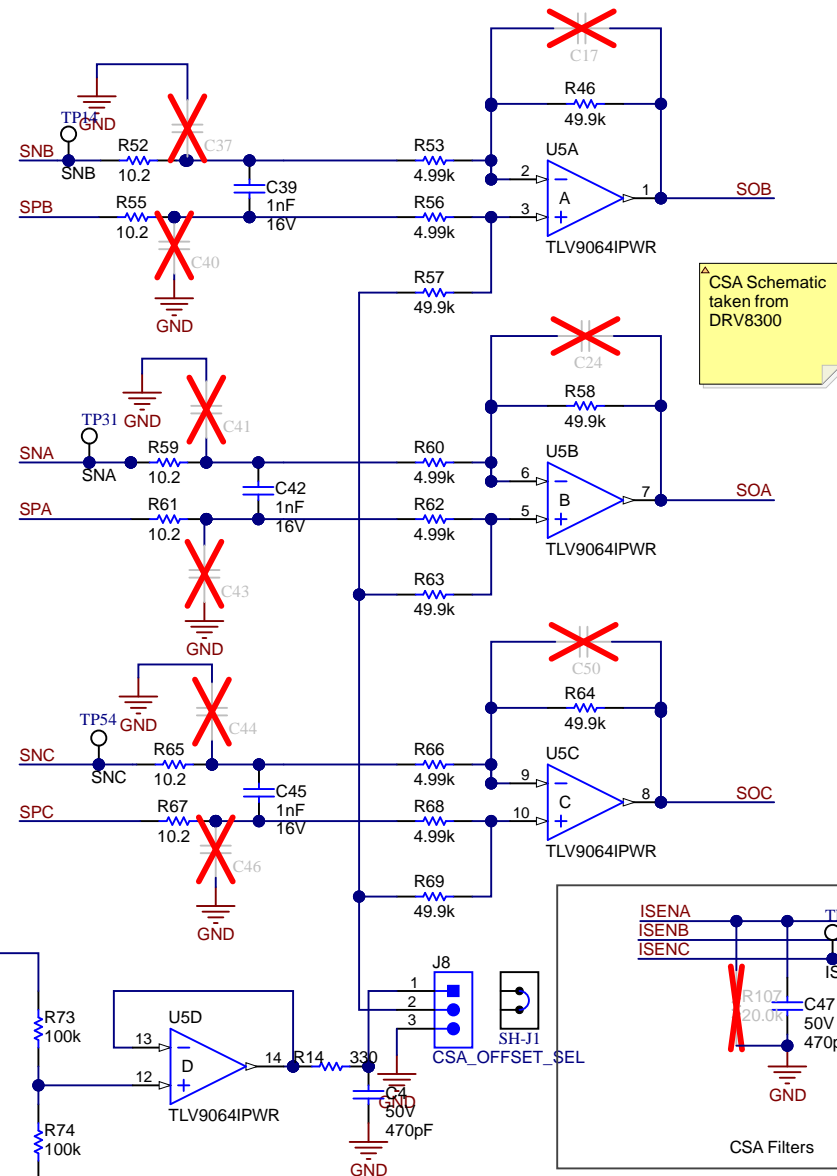
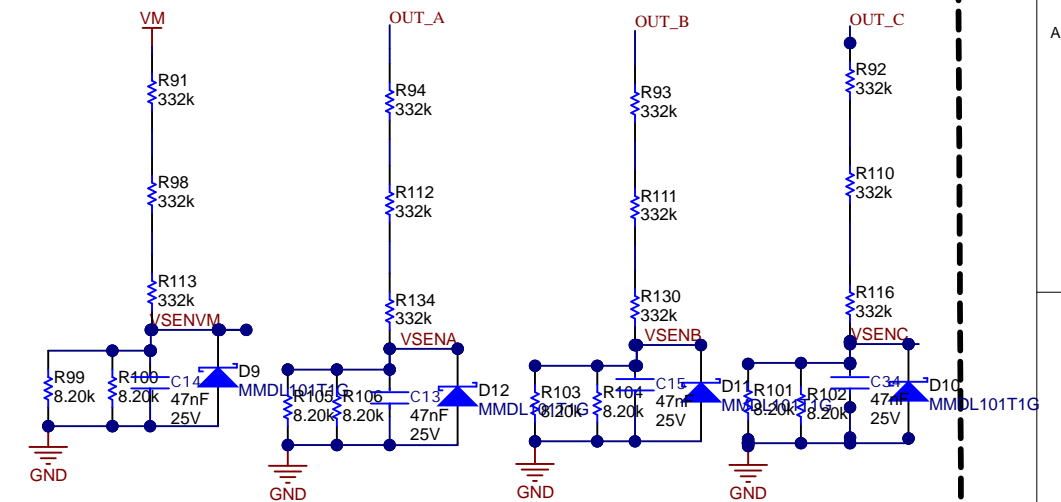
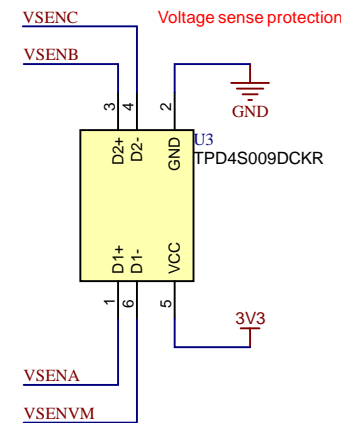


Supply Connectors

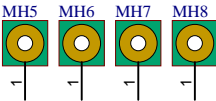


VOLTAGE SENSE & PROTECTION



Texas Instruments and/or its licensors do not warrant the accuracy or completeness of this specification or any information contained therein. Texas Instruments and/or its licensors do not warrant that this design will meet the specifications, will be suitable for your application or fit for any particular purpose, or will operate in an implementation. Texas Instruments and/or its licensors do not warrant that the design is production worthy. You should completely validate and test your design implementation to confirm the system functionality for your application.

Orderable: EVM_Orderable	Designed for: Internal	Mod. Date: 2/23/2024	 TEXAS INSTRUMENTS
TID #: N/A	Project Title: DRV7308EVM_SLF_rev1		
Number: N/A	Rev: A	Sheet Title:	
SVN Rev: Not in version control	Assembly Variant: 001	Sheet 2 of 3	
Drawn By: Anthony Lodi	File: DRV7308EVM_rev1_POWER_AND_CONNECTOR_SLF_SchDoc	Drawn By: Anthony Lodi	
Engineer: Anthony Lodi	Contact: http://www.ti.com/support	© Texas Instruments 2023	



PCB Number: N/A
PCB Rev: A

PCB
LOGO
Texas Instruments



PCB
LOGO
FCC disclaimer

PCB
LOGO
WEEE logo



CAUTION HOT SURFACE



DANGER HIGH VOLTAGE



CAUTION HOT SURFACE



CAUTION HOT SURFACE



DANGER HIGH VOLTAGE

Variant/Label Table	
Variant	Label Text
001	DRV7308EVM rev1

ZZ1
Label Assembly Note
This Assembly Note is for PCB labels only

ZZ2
Assembly Note
These assemblies are ESD sensitive, ESD precautions shall be observed.

ZZ3
Assembly Note
These assemblies must be clean and free from flux and all contaminants. Use of no clean flux is not acceptable.

ZZ4
Assembly Note
These assemblies must comply with workmanship standards IPC-A-610 Class 2, unless otherwise specified.

Texas Instruments and/or its licensors do not warrant the accuracy or completeness of this specification or any information contained therein. Texas Instruments and/or its licensors do not warrant that this design will meet the specifications, will be suitable for your application or fit for any particular purpose, or will operate in an implementation. Texas Instruments and/or its licensors do not warrant that the design is production worthy. You should completely validate and test your design implementation to confirm the system functionality for your application.

Orderable: EVM_Orderable		Designed for: Internal	Mod. Date: 2/23/2024
TID #: N/A		Project Title: DRV7308EVM_SLF_rev1	
Number: N/A	Rev: A	Sheet Title:	
SVN Rev: Not in version control		Assembly Variant: 001	Sheet: 3 of 3
Drawn By: Anthony Lodi		File: DRV7308EVM_rev1_HARDWARE_SLF.SchDoc Size: B	
Engineer: Anthony Lodi		Contact: http://www.ti.com/support	