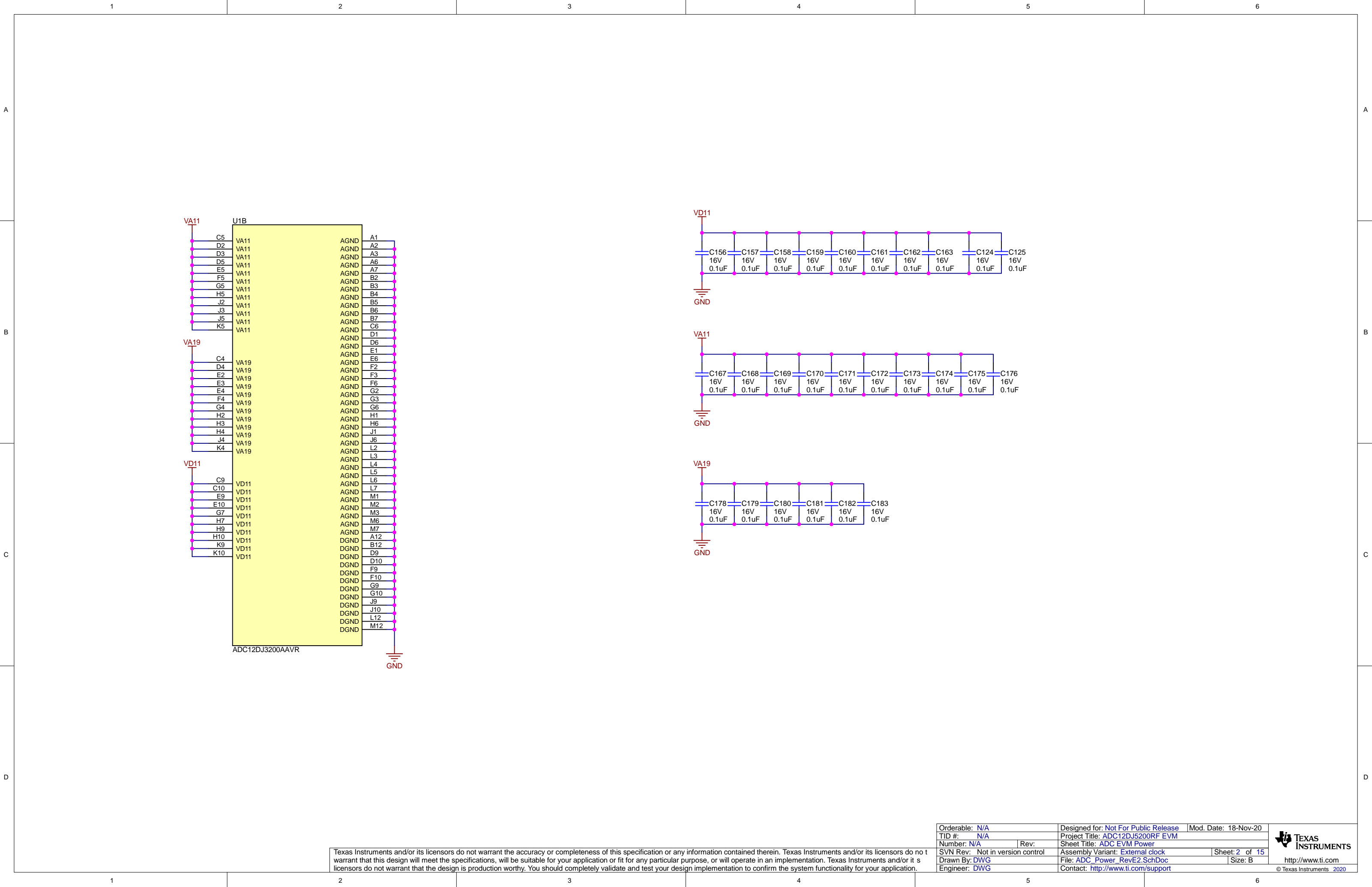


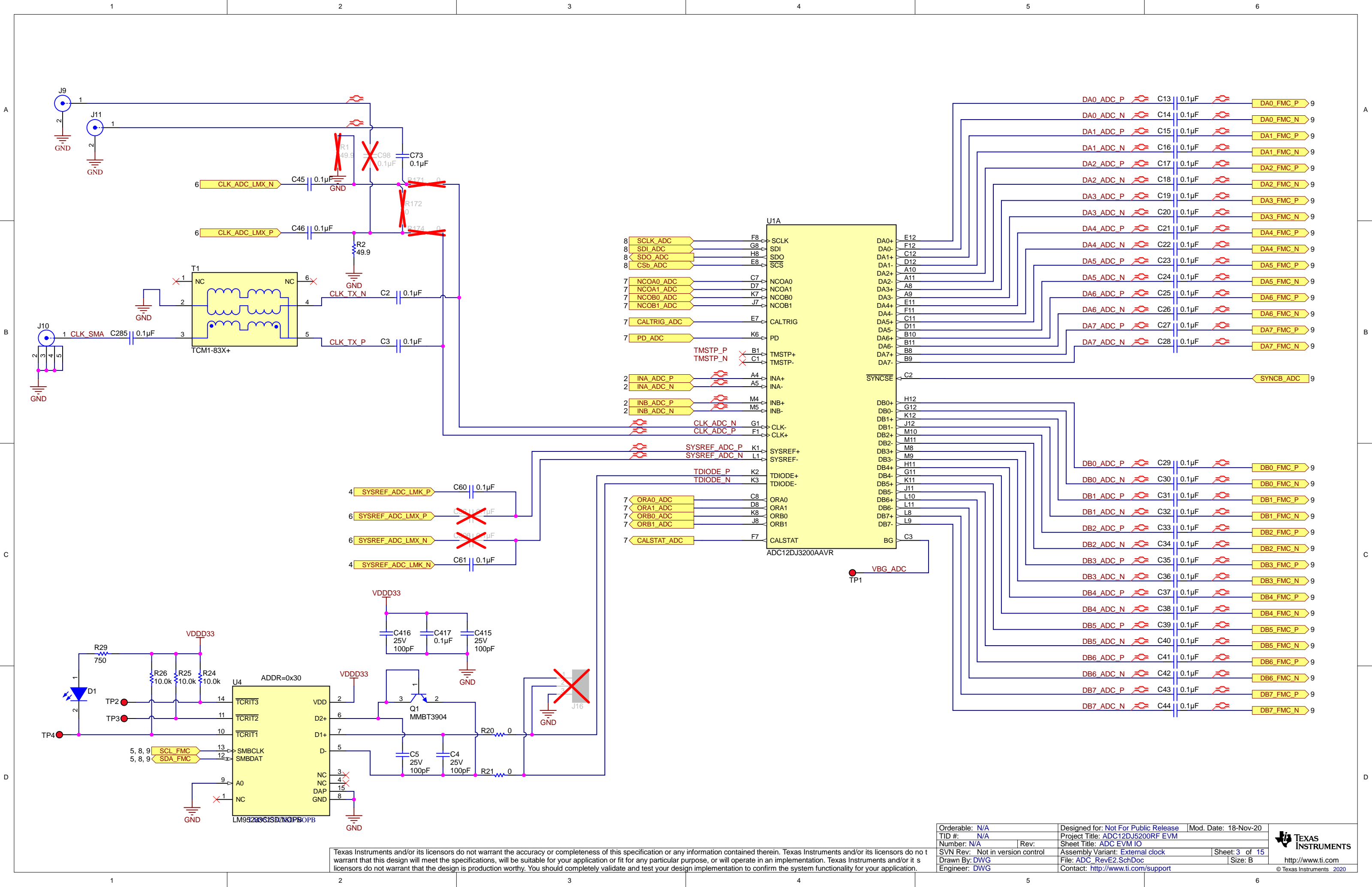
Texas Instruments and/or its licensors do not warrant the accuracy or completeness of this specification or any information contained therein. Texas Instruments and/or its licensors do not warrant that this design will meet the specifications, will be suitable for your application or fit for any particular purpose, or will operate in an implementation. Texas Instruments and/or its licensors do not warrant that the design is production worthy. You should completely validate and test your design implementation to confirm the system functionality for your application.

Orderable: N/A	Designed for: Not For Public Release	Mod. Date: 18-Nov-20
TID #: N/A	Project Title: ADC12DJ5200RF EVM	
Number: N/A	Rev:	Sheet Title: ADC EVM RF Input
SVN Rev: Not in version control	Assembly Variant: External clock	Sheet: 1 of 15
Drawn By: DWG	File: ADC_Input_RevE2.SchDoc	Size: B
Engineer: DWG	Contact: http://www.ti.com/support	



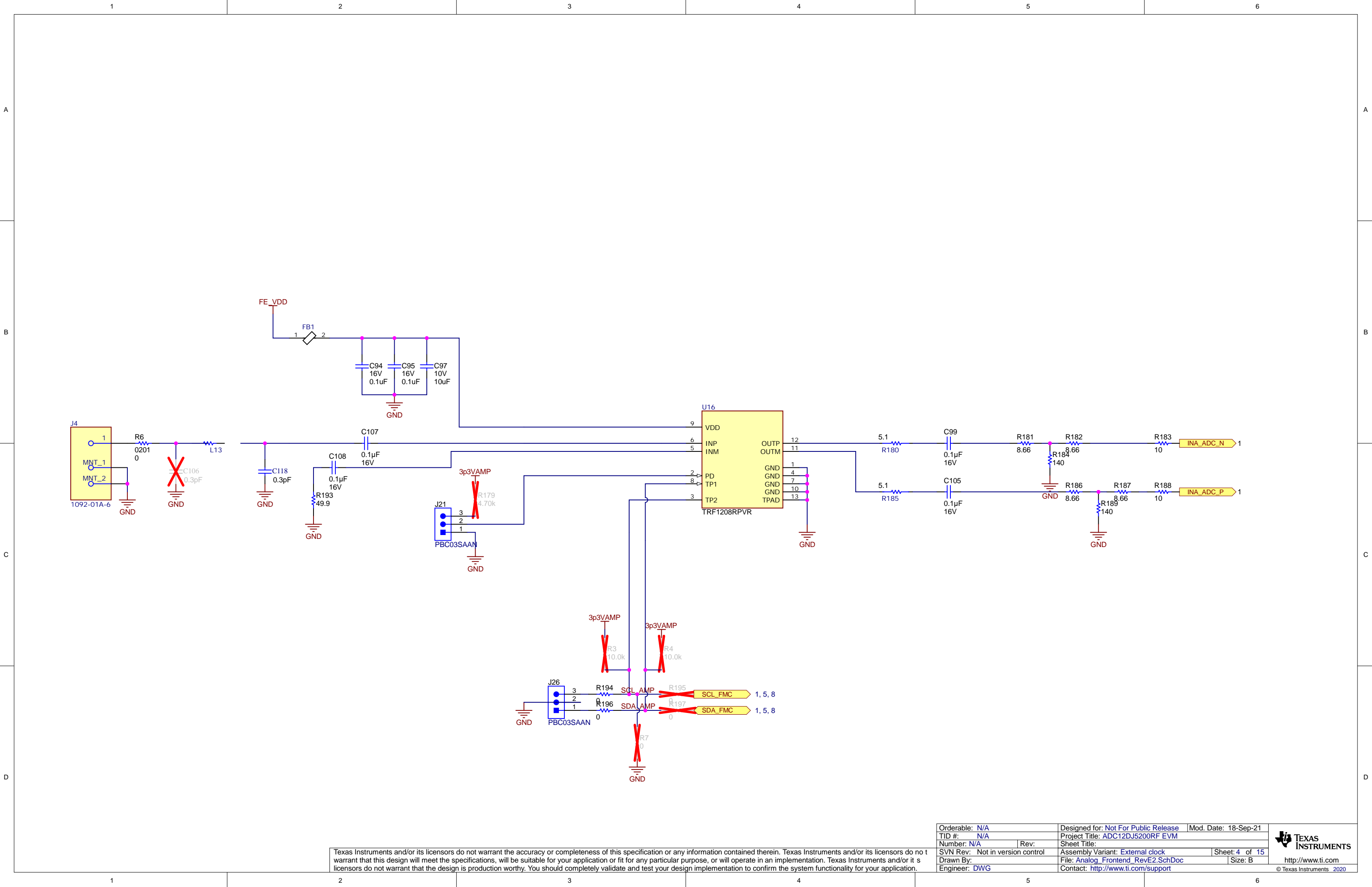
Texas Instruments and/or its licensors do not warrant the accuracy or completeness of this specification or any information contained therein. Texas Instruments and/or its licensors do not warrant that this design will meet the specifications, will be suitable for your application or fit for any particular purpose, or will operate in an implementation. Texas Instruments and/or its licensors do not warrant that the design is production worthy. You should completely validate and test your design implementation to confirm the system functionality for your application.

Orderable:	N/A	Designed for:	Not For Public Release	Mod. Date:	18-Nov-20
TID #:	N/A	Project Title:	ADC12DJ5200RF EVM		
Number:	N/A	Rev:		Sheet Title:	ADC EVM Power
SVN Rev:	Not in version control	Assembly Variant:	External clock	Sheet:	2 of 15
Drawn By:	DWG	File:	ADC_Power_RevE2.SchDoc	Size:	B
Engineer:	DWG	Contact:	http://www.ti.com/support		



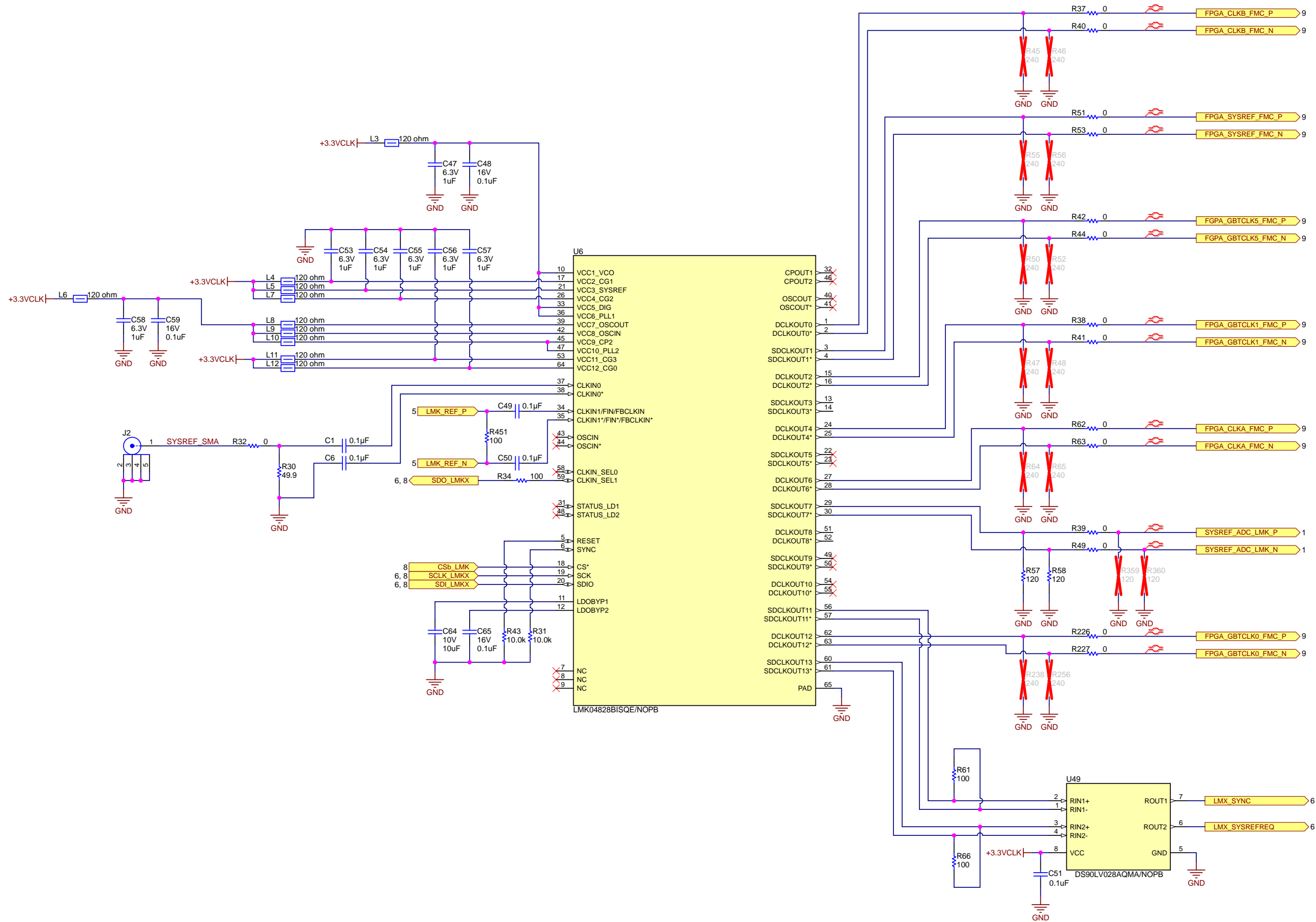
Texas Instruments and/or its licensors do not warrant the accuracy or completeness of this specification or any information contained therein. Texas Instruments and/or its licensors do not warrant that this design will meet the specifications, will be suitable for your application or fit for any particular purpose, or will operate in an implementation. Texas Instruments and/or its licensors do not warrant that the design is production worthy. You should completely validate and test your design implementation to confirm the system functionality for your application.

Orderable: N/A	Designed for: Not For Public Release	Mod. Date: 18-Nov-20
TID #: N/A	Project Title: ADC12DJ5200RF EVM	
Number: N/A	Rev: N/A	Sheet Title: ADC EVM IO
SVN Rev: Not in version control	Assembly Variant: External clock	Sheet: 3 of 15
Drawn By: DWG	File: ADC_RevE2.SchDoc	Size: B
Engineer: DWG	Contact: http://www.ti.com/support	



Texas Instruments and/or its licensors do not warrant the accuracy or completeness of this specification or any information contained therein. Texas Instruments and/or its licensors do not warrant that this design will meet the specifications, will be suitable for your application or fit for any particular purpose, or will operate in an implementation. Texas Instruments and/or its licensors do not warrant that the design is production worthy. You should completely validate and test your design implementation to confirm the system functionality for your application.

Orderable: N/A	Designed for: Not For Public Release	Mod. Date: 18-Sep-21
TID #: N/A	Project Title: ADC12DJ5200RF EVM	
Number: N/A	Rev: N/A	Sheet Title: External clock
SVN Rev: Not in version control	Assembly Variant: External clock	Sheet: 4 of 15
Drawn By: DWG	File: Analog_Frontend_RevE2.SchDoc	Size: B
Engineer: DWG	Contact: http://www.ti.com/support	

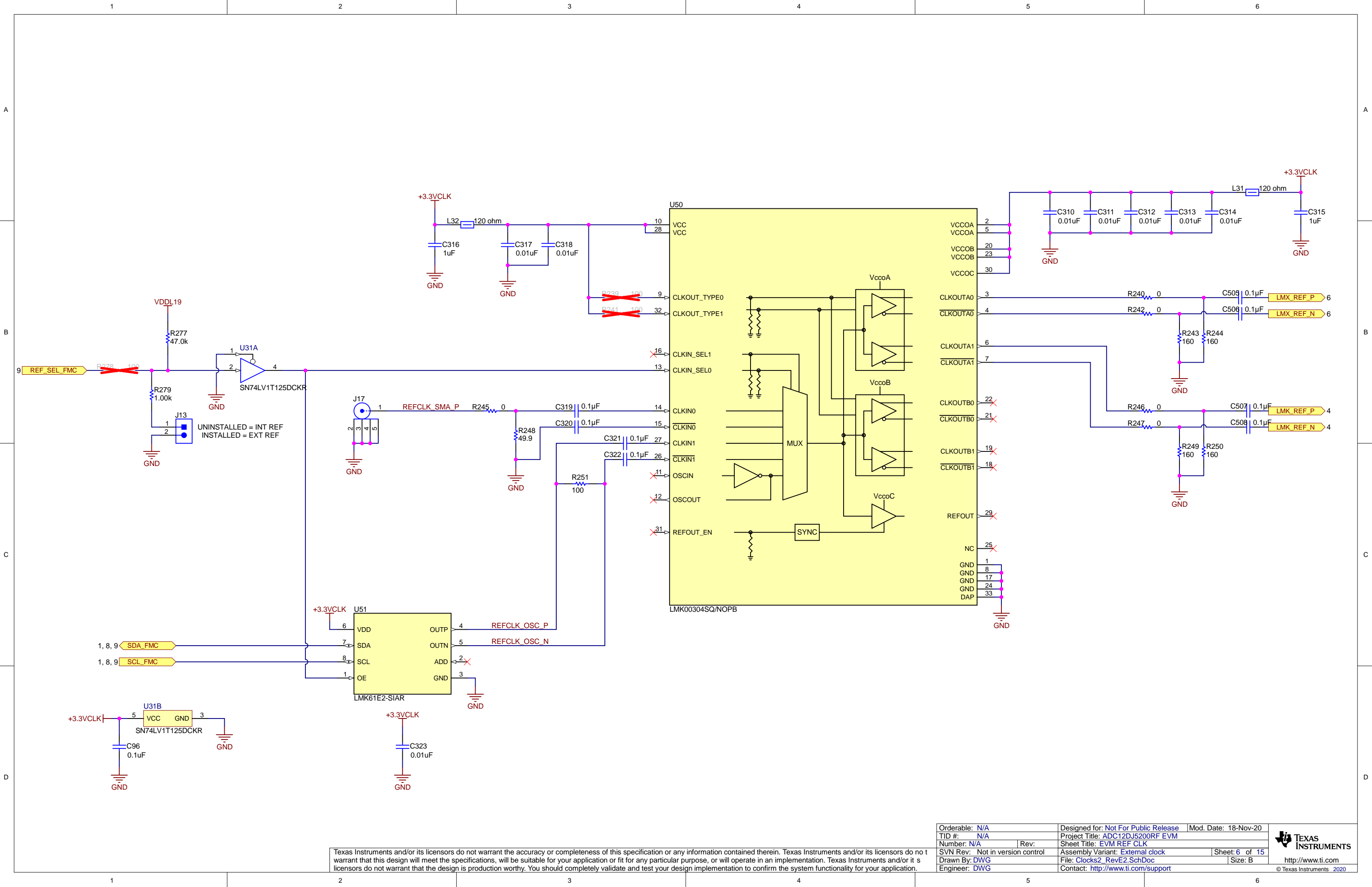


Texas Instruments and/or its licensors do not warrant the accuracy or completeness of this specification or any information contained therein. Texas Instruments and/or its licensors do not warrant that this design will meet the specifications, will be suitable for your application or fit for any particular purpose, or will operate in an implementation. Texas Instruments and/or its licensors do not warrant that the design is production worthy. You should completely validate and test your design implementation to confirm the system functionality for your application.

Orderable: N/A	Designed for: Not For Public Release	Mod. Date: 18-Nov-20
TID #: N/A	Project Title: ADC12DJ5200RF EVM	
Number: N/A	Rev: Rev	
SVN Rev: Not in version control	Assembly Variant: External clock	Sheet: 5 of 15
Drawn By: DWG	File: Clocks_RevE2.SchDoc	Size: B
Engineer: DWG	Contact: http://www.ti.com/support	

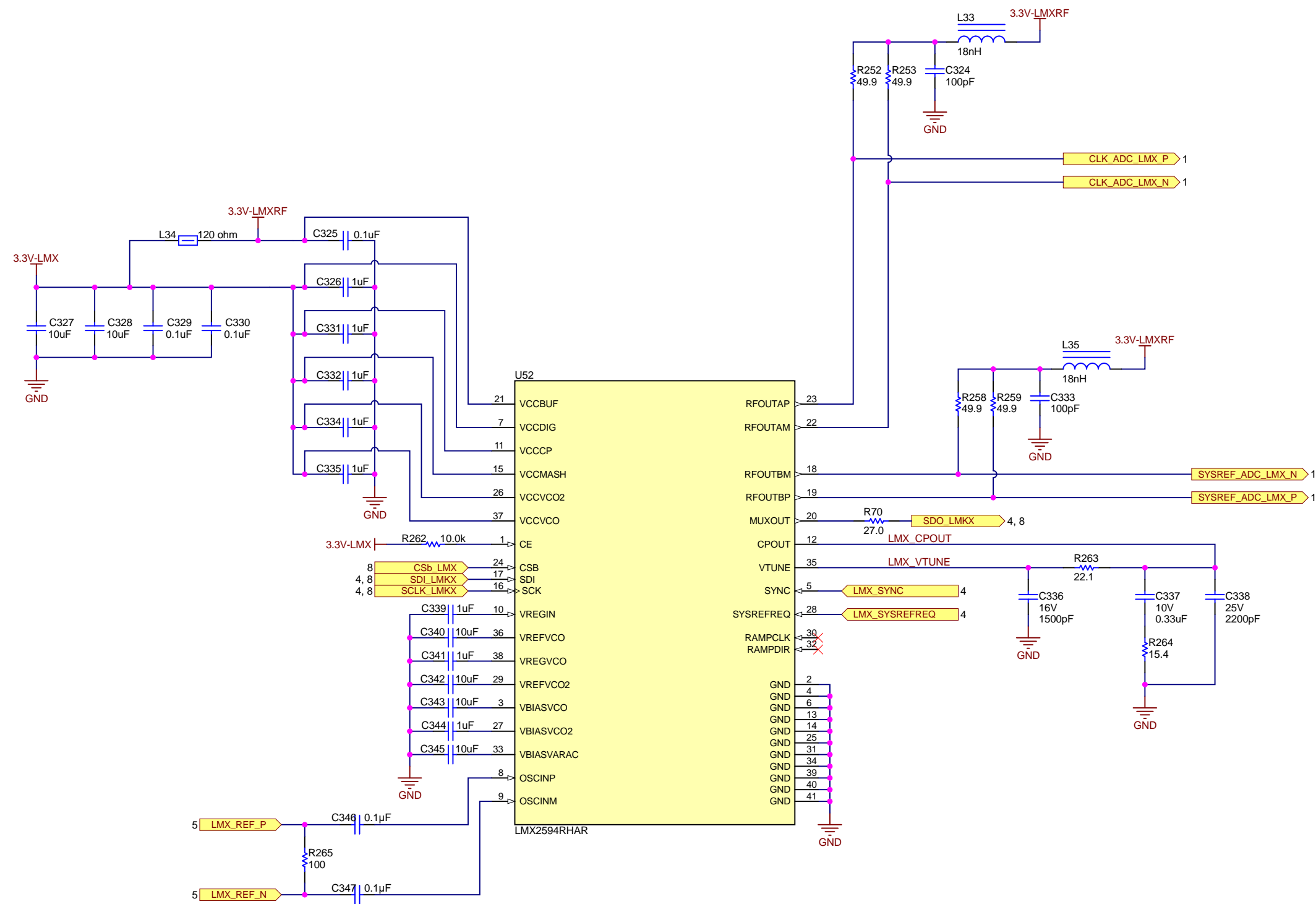


© Texas Instruments 2020



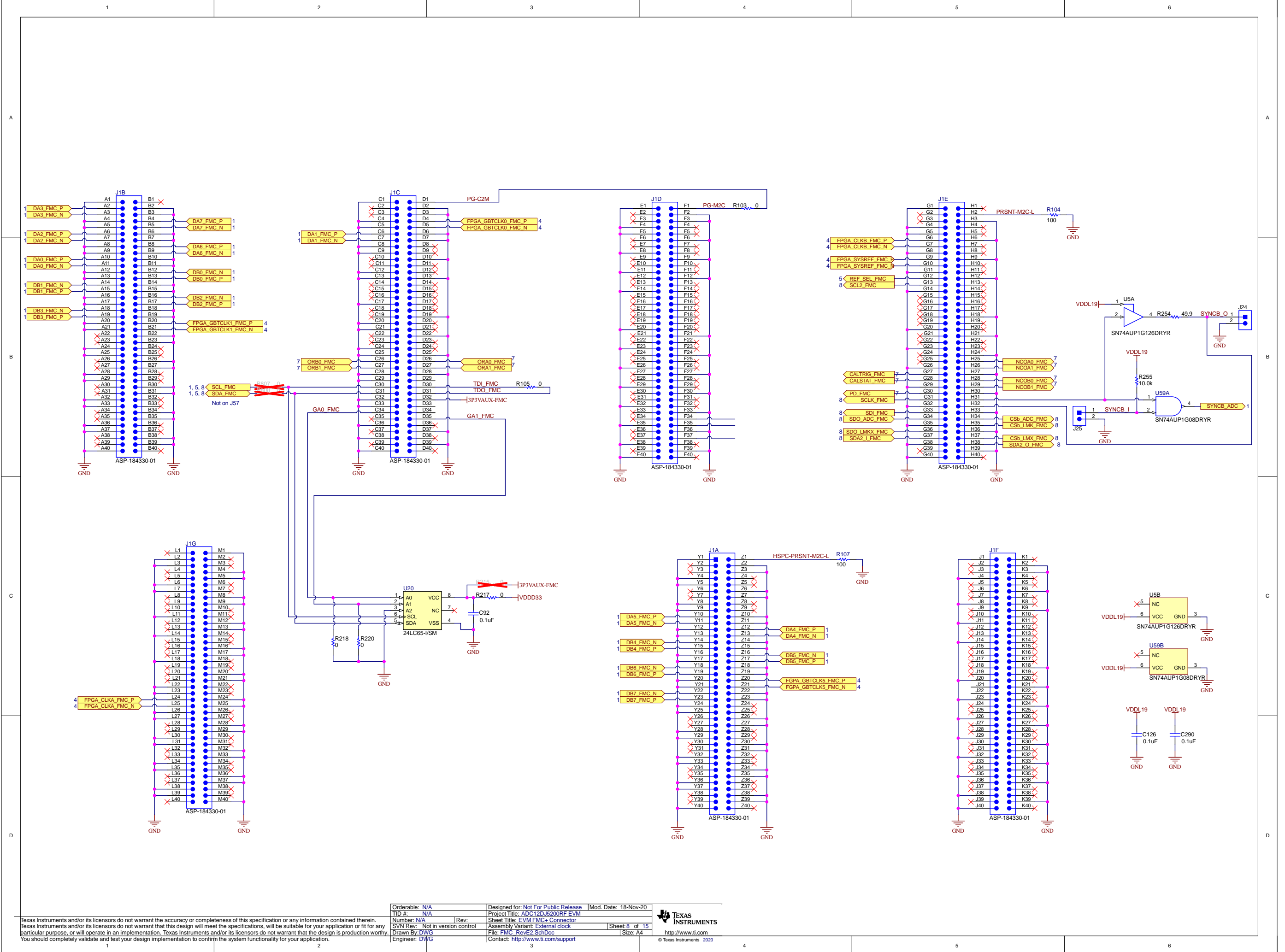
Orderable:	N/A	Designed for:	Not For Public Release	Mod. Date:	18-Nov-20
TID #:	N/A	Project Title:	ADC12DJ5200RF EVM		
Number:	N/A	Rev:	Sheet Title:	EVM REF CLK	
SVN Rev:	Not in version control	Assembly Variant:	External clock	Sheet:	6 of 15
Drawn By:	DWG	File:	Clocks2_RevE2.SchDoc	Size:	B
Engineer:	DWG	Contact:	http://www.ti.com/support		

Texas Instruments and/or its licensors do not warrant the accuracy or completeness of this specification or any information contained therein. Texas Instruments and/or its licensors do not warrant that this design will meet the specifications, will be suitable for your application or fit for any particular purpose, or will operate in an implementation. Texas Instruments and/or its licensors do not warrant that the design is production worthy. You should completely validate and test your design implementation to confirm the system functionality for your application.



Orderable: N/A	Designed for: Not For Public Release	Mod. Date: 18-Nov-20
TID #: N/A	Project Title: ADC12DJ5200RF EVM	
Number: N/A	Rev:	Sheet Title: EVM LMX
SVN Rev: Not in version control	Assembly Variant: External clock	Sheet: 7 of 15
Drawn By: DWG	File: Clocks3_RevE2.SchDoc	Size: B
Engineer: DWG	Contact: http://www.ti.com/support	

Texas Instruments and/or its licensors do not warrant the accuracy or completeness of this specification or any information contained therein. Texas Instruments and/or its licensors do not warrant that this design will meet the specifications, will be suitable for your application or fit for any particular purpose, or will operate in an implementation. Texas Instruments and/or its licensors do not warrant that the design is production worthy. You should completely validate and test your design implementation to confirm the system functionality for your application.



A

B

C

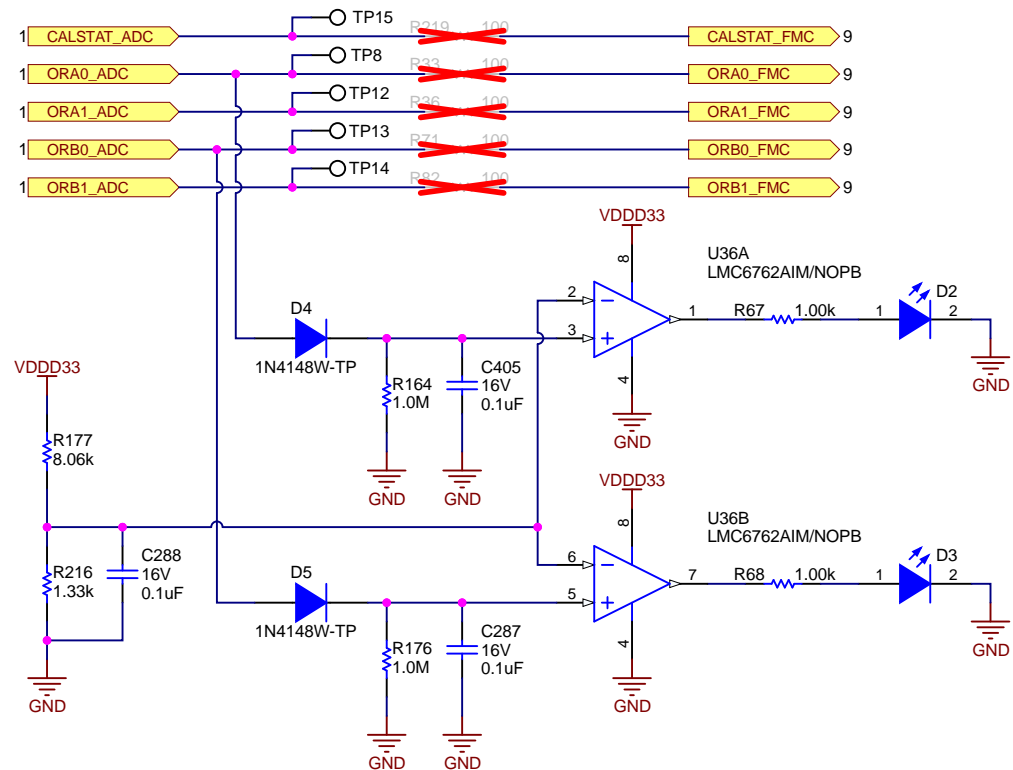
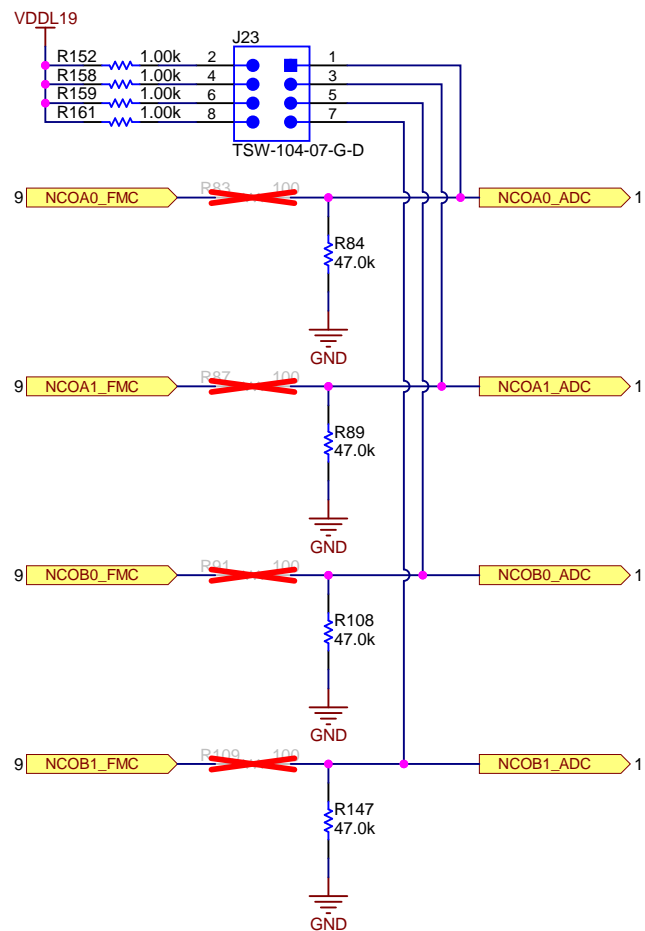
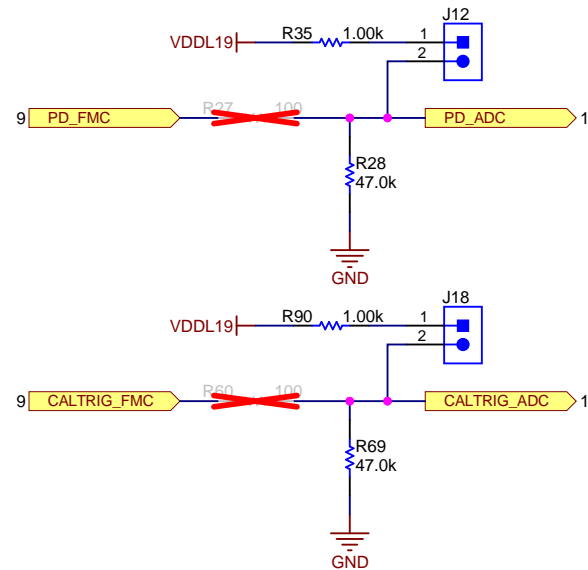
D

A

B

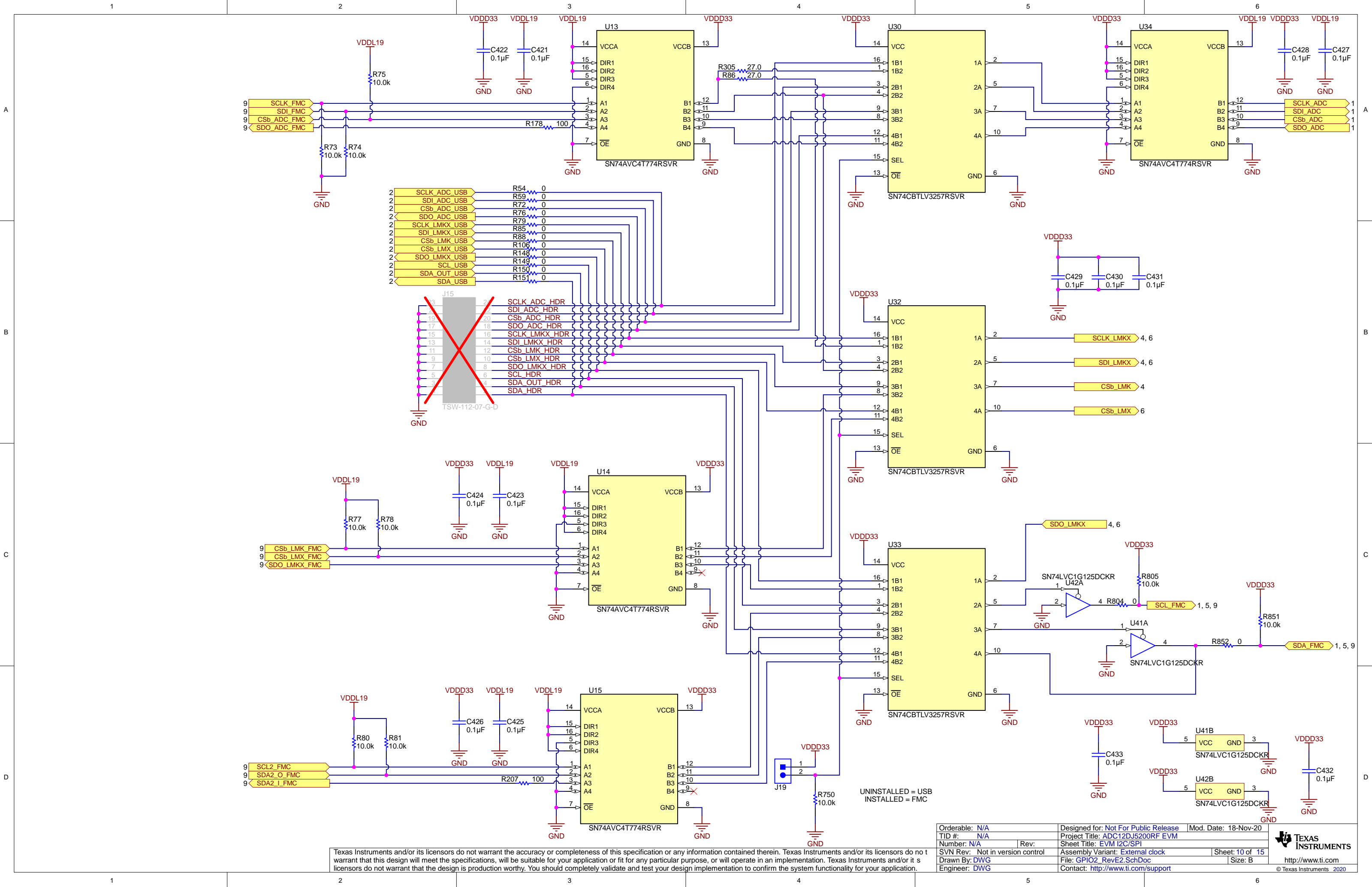
C

D



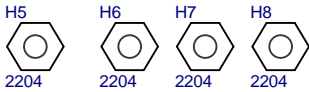
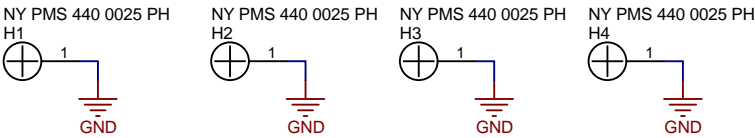
Texas Instruments and/or its licensors do not warrant the accuracy or completeness of this specification or any information contained therein. Texas Instruments and/or its licensors do not warrant that this design will meet the specifications, will be suitable for your application or fit for any particular purpose, or will operate in an implementation. Texas Instruments and/or its licensors do not warrant that the design is production worthy. You should completely validate and test your design implementation to confirm the system functionality for your application.

Orderable: N/A	Designed for: Not For Public Release	Mod. Date: 18-Nov-20
TID #: N/A	Project Title: ADC12DJ5200RF EVM	
Number: N/A	Rev:	Sheet Title: EVM GPIO
SVN Rev: Not in version control	Assembly Variant: External clock	Sheet: 9 of 15
Drawn By: DWG	File: GPIO_RevE2.SchDoc	Size: B
Engineer: DWG	Contact: http://www.ti.com/support	



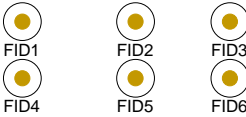
Texas Instruments and/or its licensors do not warrant the accuracy or completeness of this specification or any information contained therein. Texas Instruments and/or its licensors do not warrant that this design will meet the specifications, will be suitable for your application or fit for any particular purpose, or will operate in an implementation. Texas Instruments and/or its licensors do not warrant that the design is production worthy. You should completely validate and test your design implementation to confirm the system functionality for your application.

Orderable: N/A	Designed for: Not For Public Release	Mod. Date: 18-Nov-20
TID #: N/A	Project Title: ADC12DJ5200RF EVM	
Number: N/A	Rev: N/A	Sheet Title: EVM I2C/SPI
SVN Rev: Not in version control	Assembly Variant: External clock	Sheet: 10 of 15
Drawn By: DWG	File: GPIO2_RevE2.SchDoc	Size: B
Engineer: DWG	Contact: http://www.ti.com/support	



PCB Number: N/A

PCB Rev: E2



PCB

LOGO

Texas Instruments



PCB

LOGO

FCC disclaimer

PCB

LOGO

WEEE logo

LBL1

PCB Label

THT-14-423-10

Size: 0.65" x 0.20 "

ZZ1

Label Assembly Note

This Assembly Note is for PCB labels only

ZZ2

Assembly Note

These assemblies are ESD sensitive, ESD precautions shall be observed.

ZZ3

Assembly Note

These assemblies must be clean and free from flux and all contaminants. Use of no clean flux is not acceptable.

ZZ4

Assembly Note

These assemblies must comply with workmanship standards IPC-A-610 Class 2, unless otherwise specified.

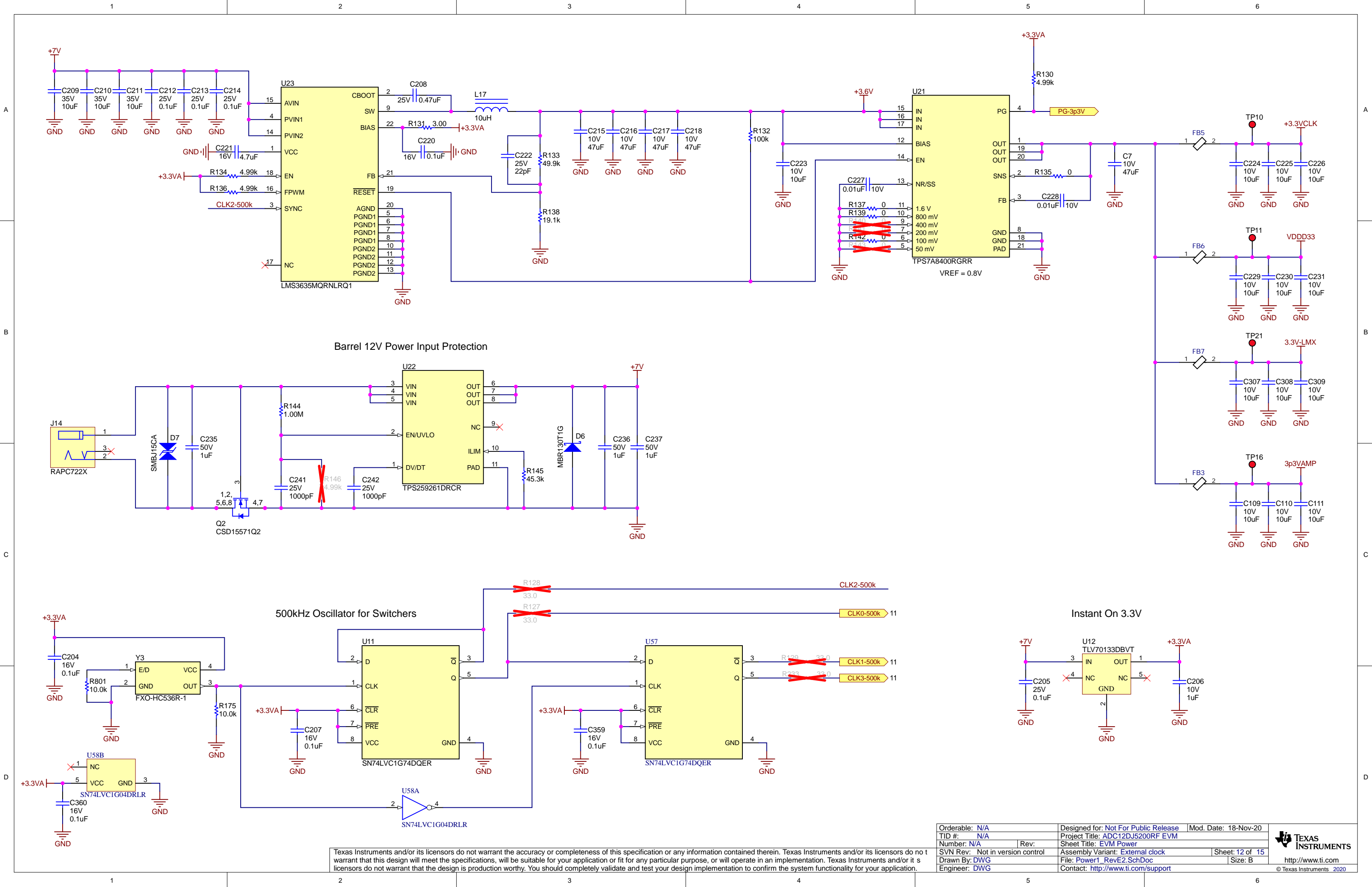
Variant/Label Table	
Variant	Label Text
001	ChangeMe!
002	ChangeMe!

^A You should delete the nylon screws/standoffs and/or the bumpons as needed for your design (or substitute other parts from Hardware.IntLib). Bumpons are cheaper, but provide less clearance.

Deleting anything else from this page may result in your EVM submission being rejected (until you add them back).

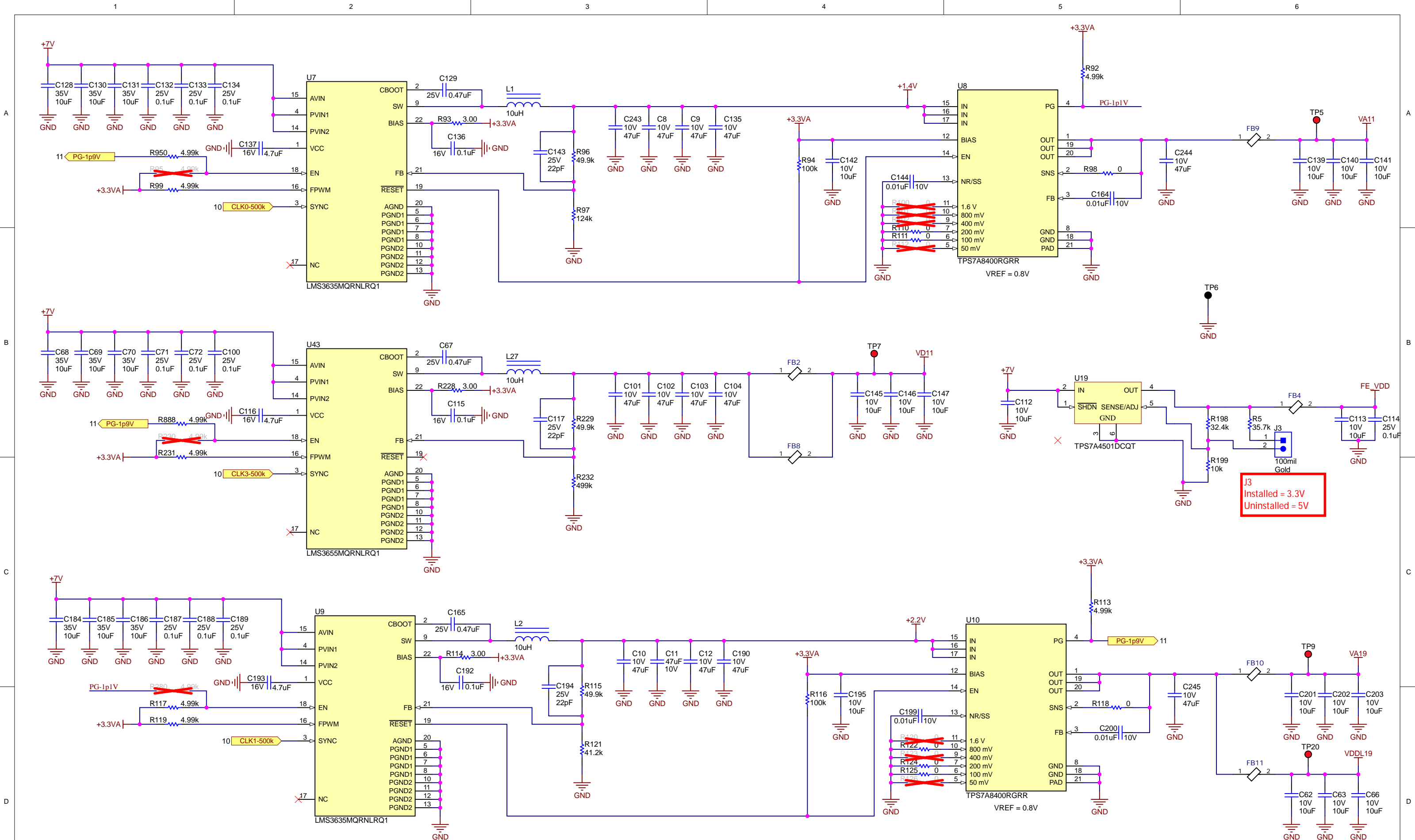
Update the Label Text in the Label Table as needed for each Assembly Variant.

You should delete this note too.



Texas Instruments and/or its licensors do not warrant the accuracy or completeness of this specification or any information contained therein. Texas Instruments and/or its licensors do not warrant that this design will meet the specifications, will be suitable for your application or fit for any particular purpose, or will operate in an implementation. Texas Instruments and/or its licensors do not warrant that the design is production worthy. You should completely validate and test your design implementation to confirm the system functionality for your application.

Orderable: N/A	Designed for: Not For Public Release	Mod. Date: 18-Nov-20
TID #: N/A	Project Title: ADC12DJ5200RF EVM	
Number: N/A	Rev:	Sheet Title: EVM Power
SVN Rev: Not in version control	Assembly Variant: External clock	Sheet: 12 of 15
Drawn By: DWG	File: Power1_RevE2.SchDoc	Size: B
Engineer: DWG	Contact: http://www.ti.com/support	



Texas Instruments and/or its licensors do not warrant the accuracy or completeness of this specification or any information contained therein. Texas Instruments and/or its licensors do not warrant that this design will meet the specifications, will be suitable for your application or fit for any particular purpose, or will operate in an implementation. Texas Instruments and/or its licensors do not warrant that the design is production worthy. You should completely validate and test your design implementation to confirm the system functionality for your application.

Orderable: N/A	Designed for: Not For Public Release	Mod. Date: 20-Nov-20
TID #: N/A	Project Title: ADC12DJ5200RF EVM	
Number: N/A	Rev:	Sheet Title: EVM Power
SVN Rev: Not in version control	Assembly Variant: External clock	Sheet: 13 of 15
Drawn By: DWG	File: Power2_RevE2.SchDoc	Size: B
Engineer: DWG	Contact: http://www.ti.com/support	http://www.ti.com
© Texas Instruments 2020		



