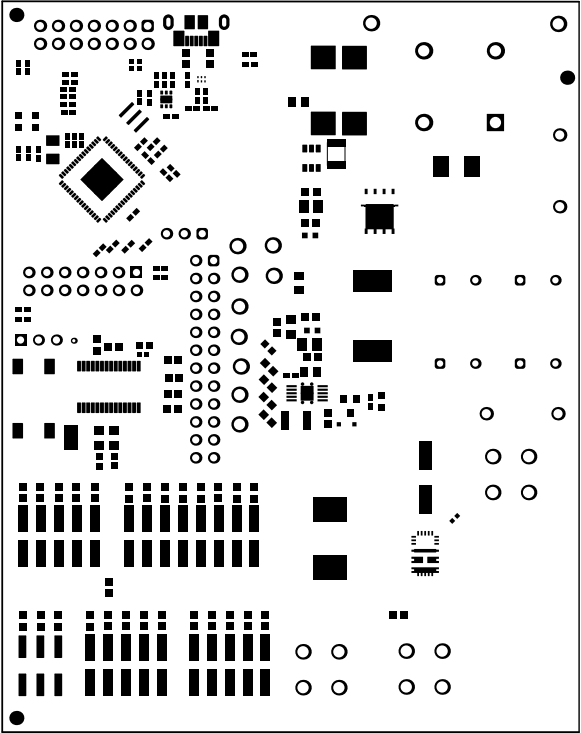
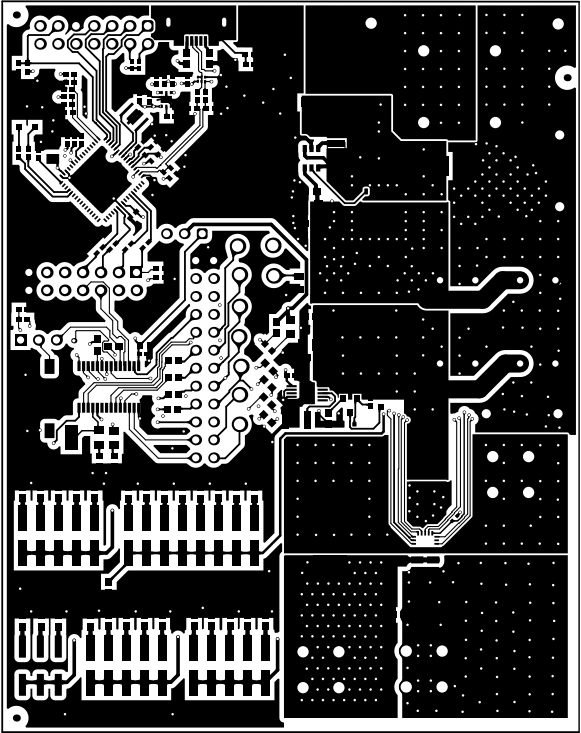


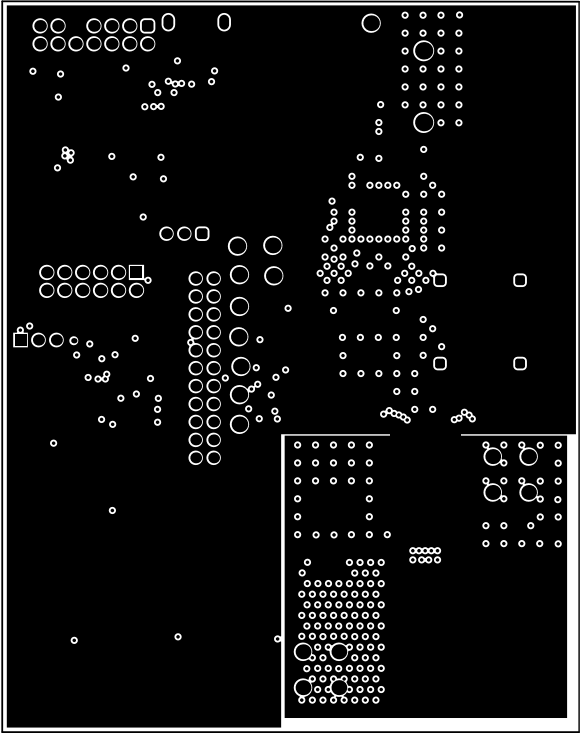
ALL NETWORK VIEWED FROM TOP SIDE	BOARD #	MOD94	REV#	E1	SUN REV#	Not in version control
LAYER NAME =	Top Overlay	TID #	N/A			
PLOT NAME =	Top Overlay	GENERATED	11/12/2024	1:40:00 PM	TEXAS INSTRUMENTS	



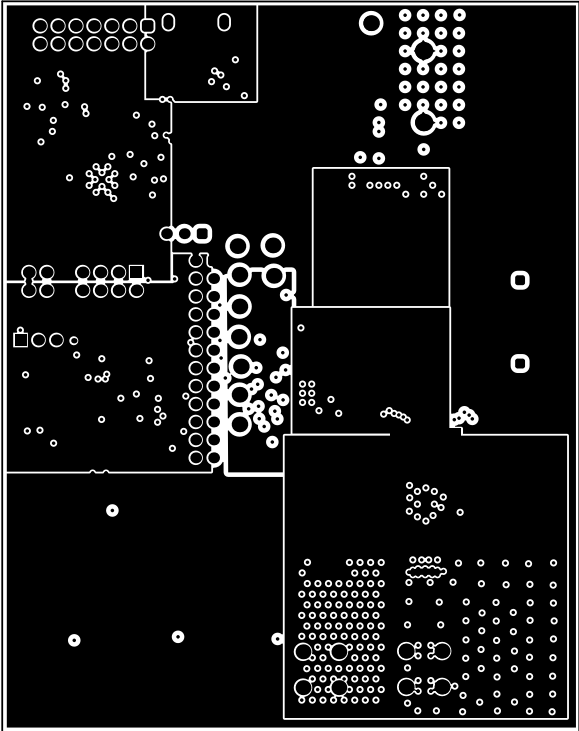
ALL NETWORK VIEWED FROM TOP SIDE	BOARD #	MOD#	REV#	EE	SUN REV#	Not in version control
LAYER NAME = Top Solder	TID #	N/A				
PLOT NAME = Top Solder Mask	GENERATED	1	11/12/2024	1:40:00 PM	TEXAS INSTRUMENTS	



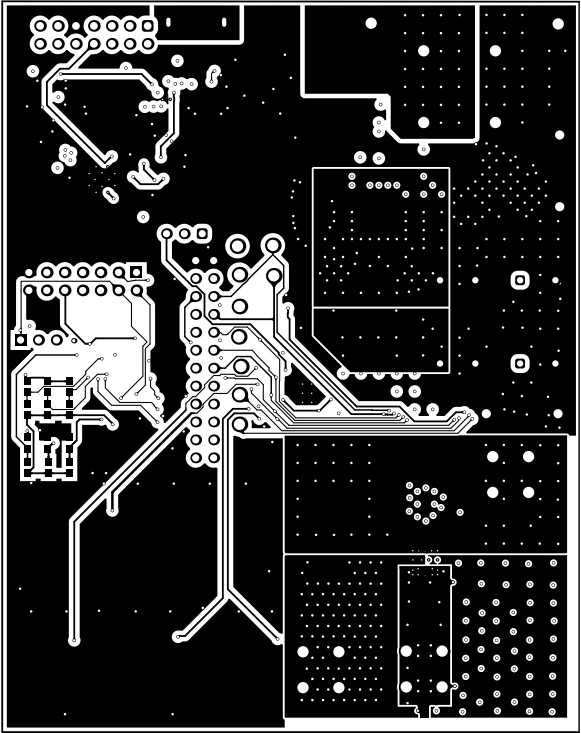
ALL NETWORK VIEWED FROM TOP SIDE	BOARD #	MOD#	REV#	EE	SUN REV#	Not in version control
LAYER NAME = Top Layer	TID #	N/A				
PLOT NAME = Top Layer	GENERATED	11/12/2024	11:40:00 PM	TEXAS INSTRUMENTS		



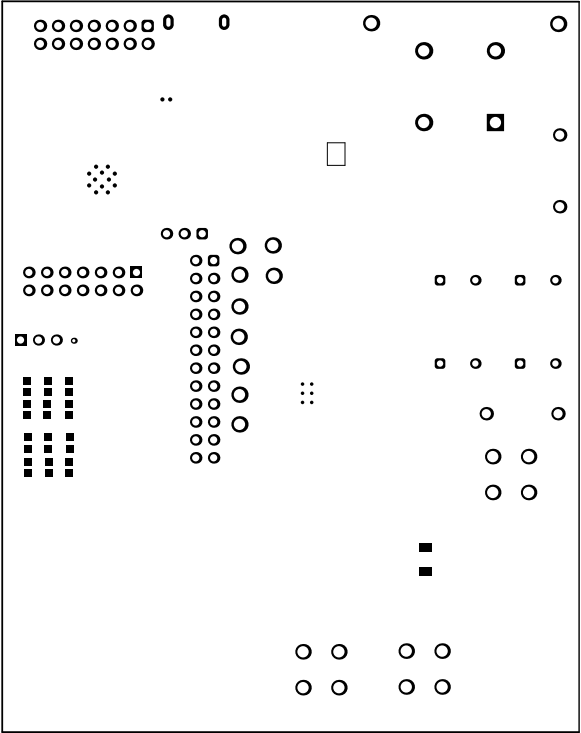
ALL NETWORK VIEWED FROM TOP SIDE	BOARD #	MOD#	REV#	ET	SUN REV#	Not in version control
LAYER NAME =	TID #	N/A				
PLOT NAME =	Signal 1	GENERATED :	11/12/2024	1:40:00 PM	TEXAS INSTRUMENTS	



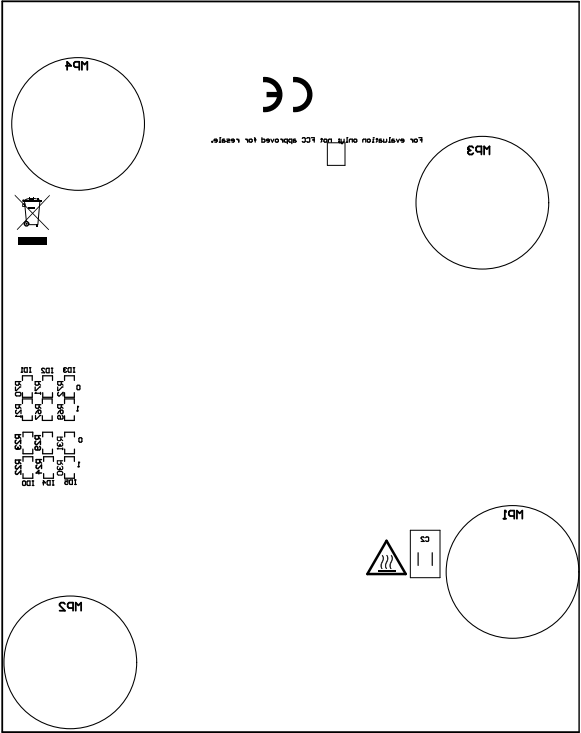
ALL NETWORK VIEWED FROM TOP SIDE	BOARD #1	MOD#1	REV#	E1	SUN REV#	Not in version control
LAYER NAME =	TID #1	N/A				
PLOT NAME =	Signal 2	GENERATED :	11/12/2024	1:40:01 PM	TEXAS INSTRUMENTS	



ALL NETWORK VIEWED FROM TOP SIDE	BOARD #:	10094	REV:	E1	SUN REV:	Not in version control
LAYER NAME = Bottom Layer	TID #:	N/A				
PLOT NAME = Bottom Layer	GENERATED :	11/12/2024	1:40:01 PM	TEXAS INSTRUMENTS		



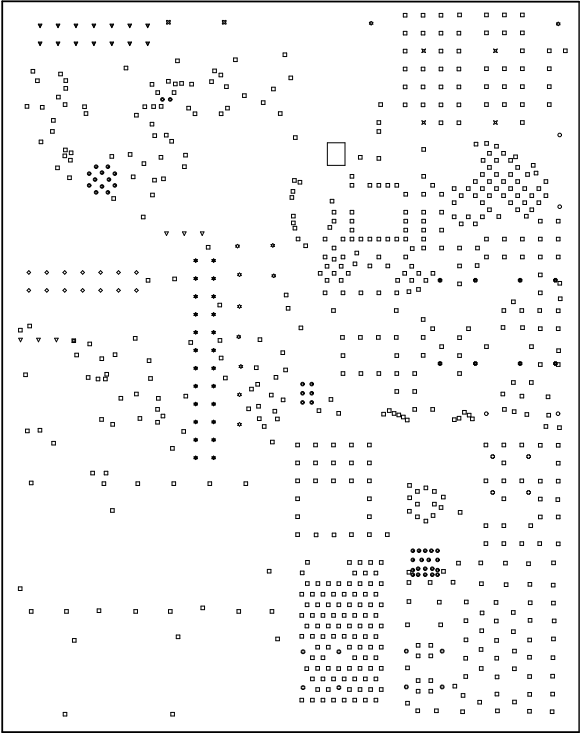
ALL NETWORK VIEWED FROM TOP SIDE	BOARD #	MOD#	REV	ET	SUN REV	Not in version control
LAYER NAME = Bottom Solder	TID #	N/A				
PLOT NAME = Bottom Solder Mask	GENERATED	11/12/2024	1:40:01 PM	TEXAS INSTRUMENTS		



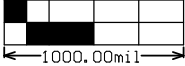
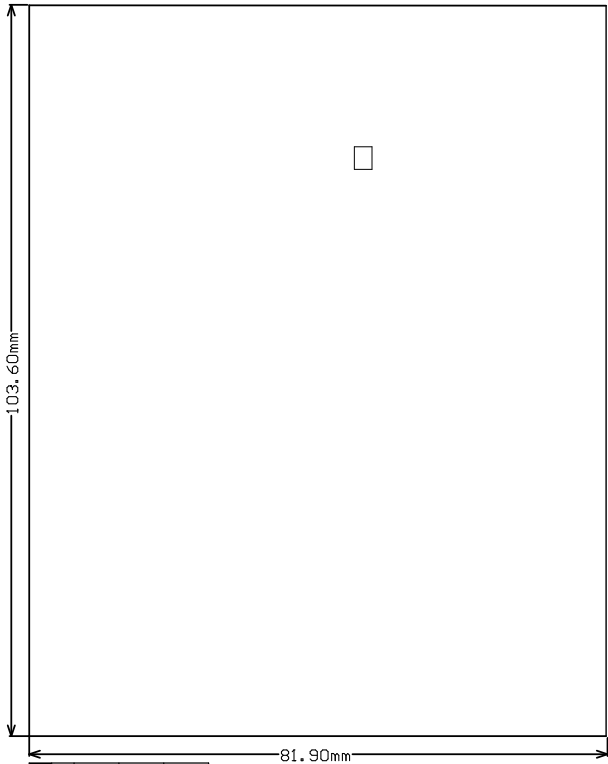
ALL NETWORK VIEWED FROM TOP SIDE	BOARD #1	MOD#1	REV#	E1	SUN REV#	Not in version control
LAYER NAME = Bottom Overlay	TID #1	N/A				
PLOT NAME = Bottom Overlay	GENERATED	1	11/12/2024	1:40:01 PM	TEXAS INSTRUMENTS	

Symbol	Quantity	Finished Hole Size	Plated	Hole Type	Drill Layer Pair	Hole Tolerance
⊙	39	7.87mil (0.200mm)	PTH	Round	Top Layer - Bottom Layer	+/-3.15mil
□	644	13.78mil (0.350mm)	PTH	Round	Top Layer - Bottom Layer	
▣	1	17.72mil (0.450mm)	PTH	Round	Top Layer - Bottom Layer	
⊕	8	35.43mil (0.900mm)	PTH	Round	Top Layer - Bottom Layer	
◇	14	40.00mil (1.016mm)	PTH	Round	Top Layer - Bottom Layer	
✱	24	40.16mil (1.020mm)	PTH	Round	Top Layer - Bottom Layer	+/-1.97mil
▽	6	40.16mil (1.020mm)	PTH	Round	Top Layer - Bottom Layer	
▼	14	43.31mil (1.100mm)	PTH	Round	Top Layer - Bottom Layer	
○	4	51.18mil (1.300mm)	PTH	Round	Top Layer - Bottom Layer	+3.94mil/-0.00mil
⊗	4	62.99mil (1.600mm)	PTH	Round	Top Layer - Bottom Layer	
⊕	12	62.99mil (1.600mm)	PTH	Round	Top Layer - Bottom Layer	
✱	11	63.00mil (1.600mm)	PTH	Round	Top Layer - Bottom Layer	
⊗	2	23.62mil (0.600mm)	PTH	Slot	Top Layer - Bottom Layer	
	783 Total					

Slot definitions : Routed Path Length = Calculated from tool start centre position to tool end centre position.
Hole Length = Routed Path Length + Tool Size = Slot length as defined in the PCB layout



ALL NETWORK VIEWED FROM TOP SIDE	BOARD #:	MOD#:	REV#	ET	SUN REV#	Not in version control
LAYER NAME =	Drill Drawing	TID #:	N/A			
PLOT NAME =	Drill Drawing	GENERATED :	11/12/2024	1:40:01 PM	TEXMS INSTRUMENTS	



ALL NETWORK VIEWED FROM TOP SIDE	BOARD #	10094	REV#	E1	SUN REV#	Not in version control
LAYER NAME =	T10 Board Dimensions					
	T10 #	N/A				
PLOT NAME =	Board Dimensions	GENERATED	11/12/2024	1:40:02 PM	TEXAS INSTRUMENTS	