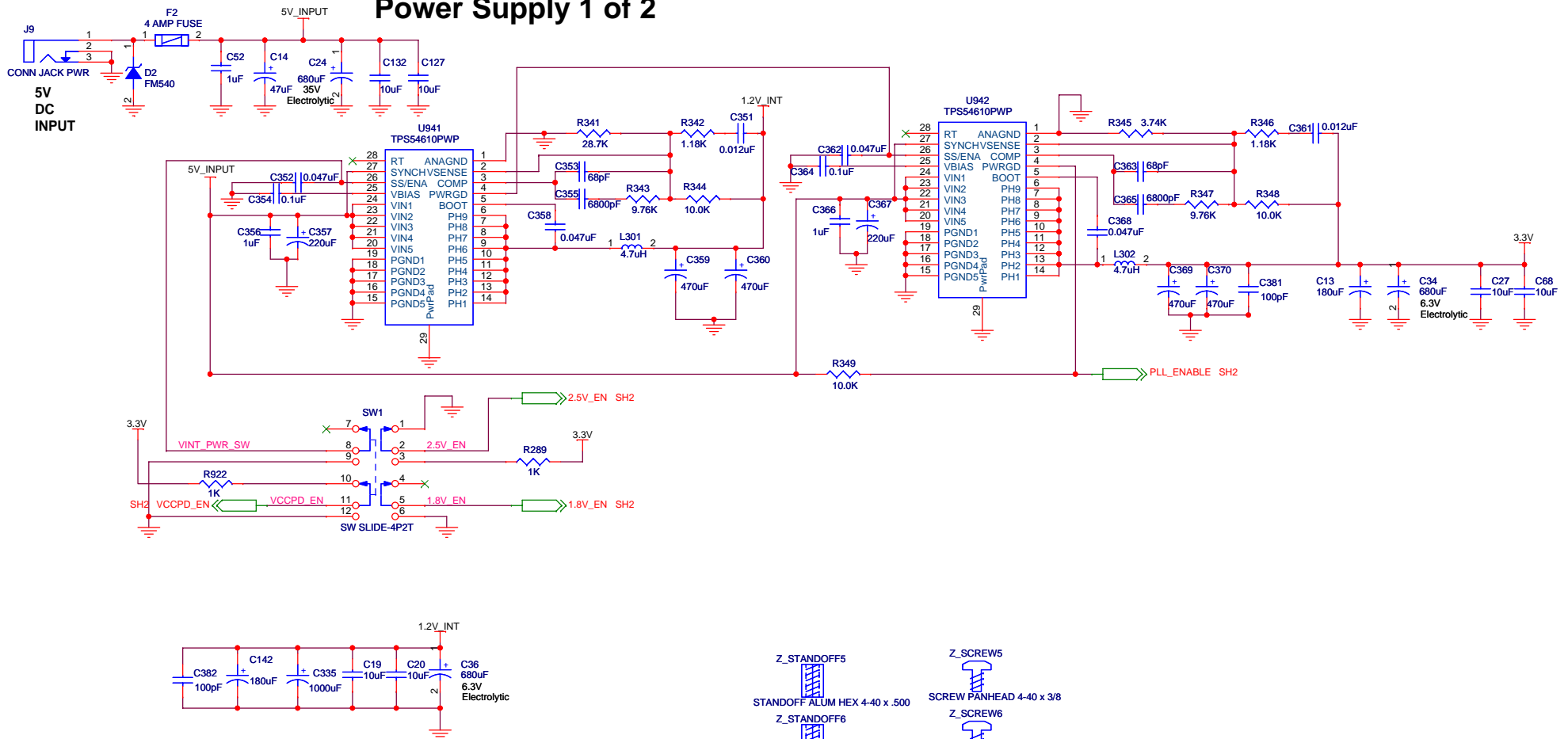


Power Supply 1 of 2



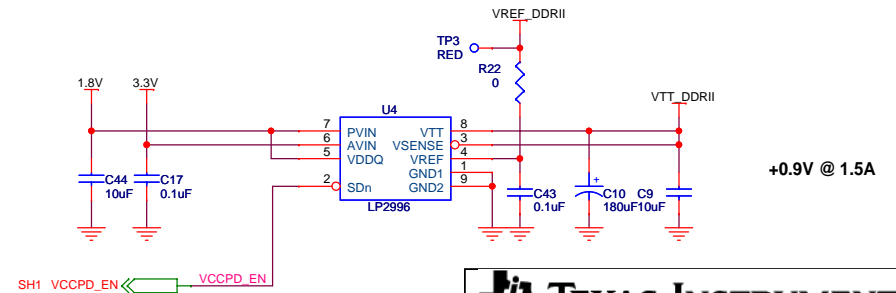
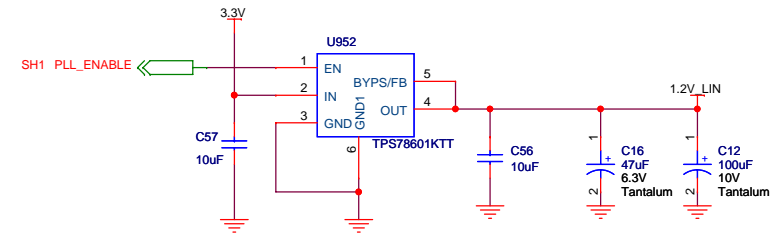
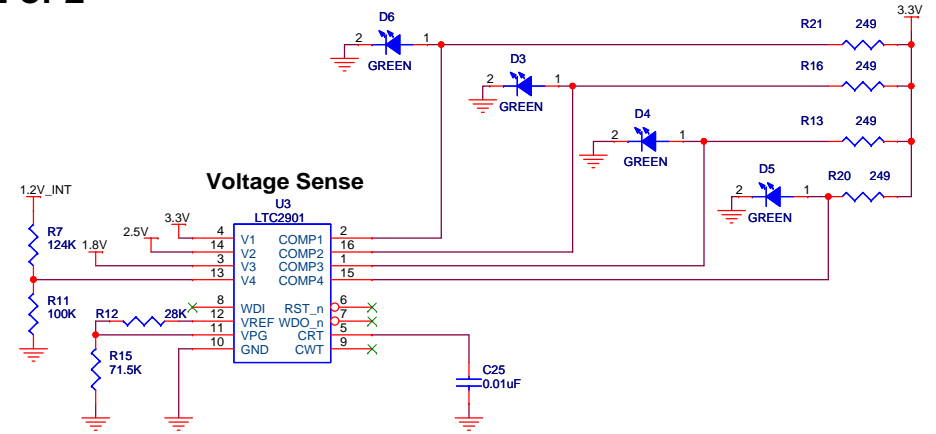
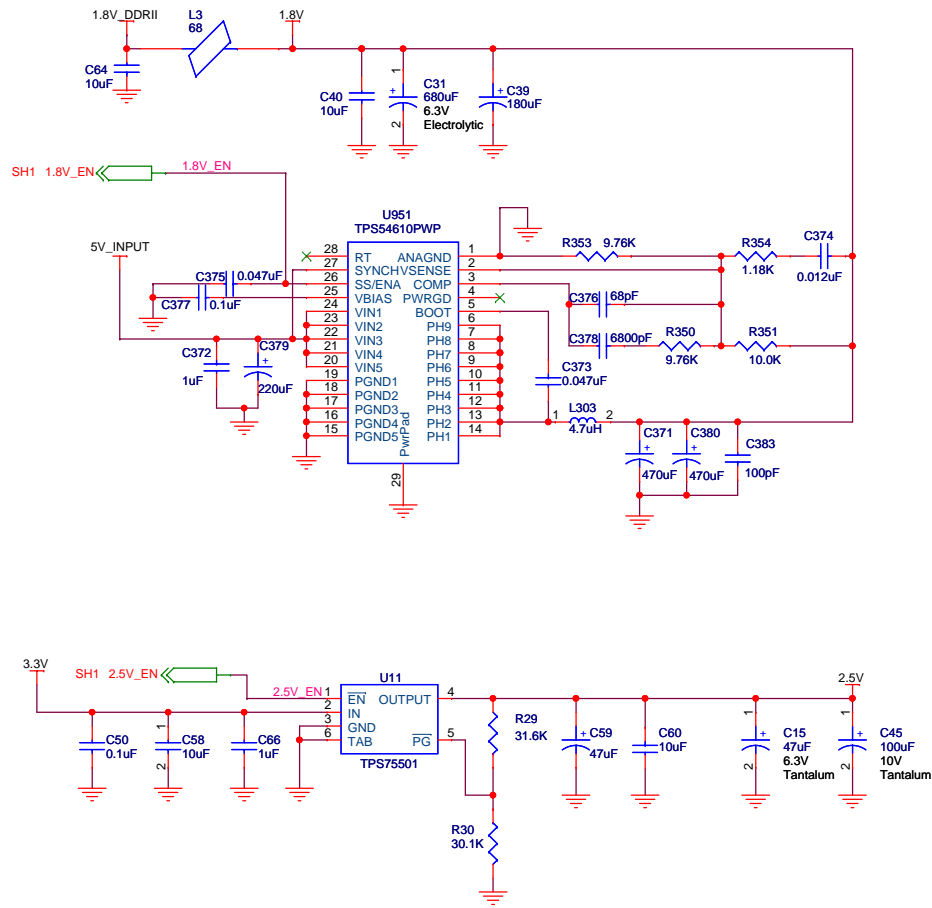
Z_STANDOFF5	Z_SCREW5
STANDOFF ALUM HEX 4-40 x .500	SCREW PANHEAD 4-40 x 3/8
Z_STANDOFF6	Z_SCREW6
STANDOFF ALUM HEX 4-40 x .500	SCREW PANHEAD 4-40 x 3/8
Z_STANDOFF1	Z_SCREW1
STANDOFF ALUM HEX 4-40 x .500	SCREW PANHEAD 4-40 x 3/8
Z_STANDOFF2	Z_SCREW2
STANDOFF ALUM HEX 4-40 x .500	SCREW PANHEAD 4-40 x 3/8
Z_STANDOFF3	Z_SCREW3
STANDOFF ALUM HEX 4-40 x .500	SCREW PANHEAD 4-40 x 3/8
Z_STANDOFF4	Z_SCREW4
STANDOFF ALUM HEX 4-40 x .500	SCREW PANHEAD 4-40 x 3/8

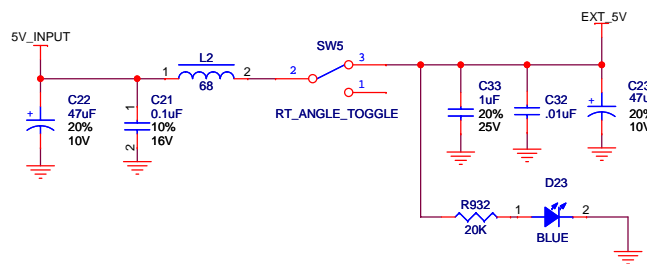
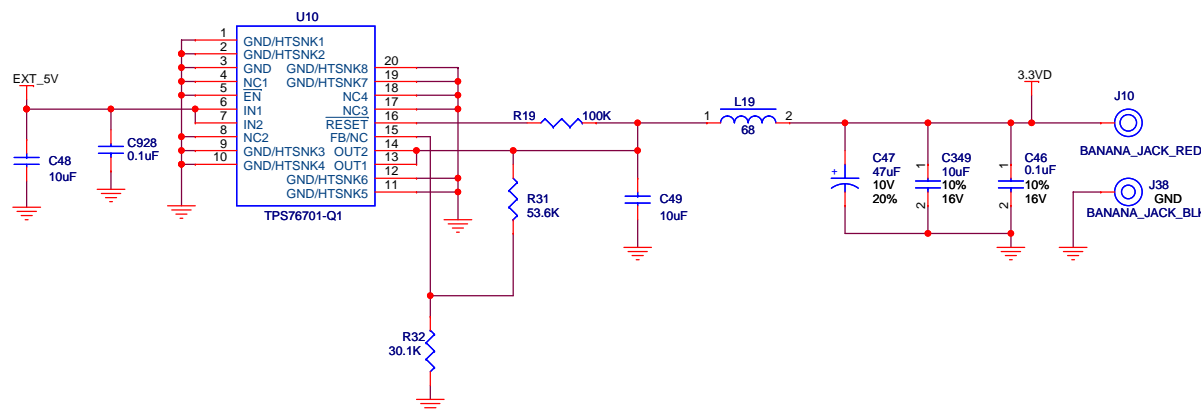
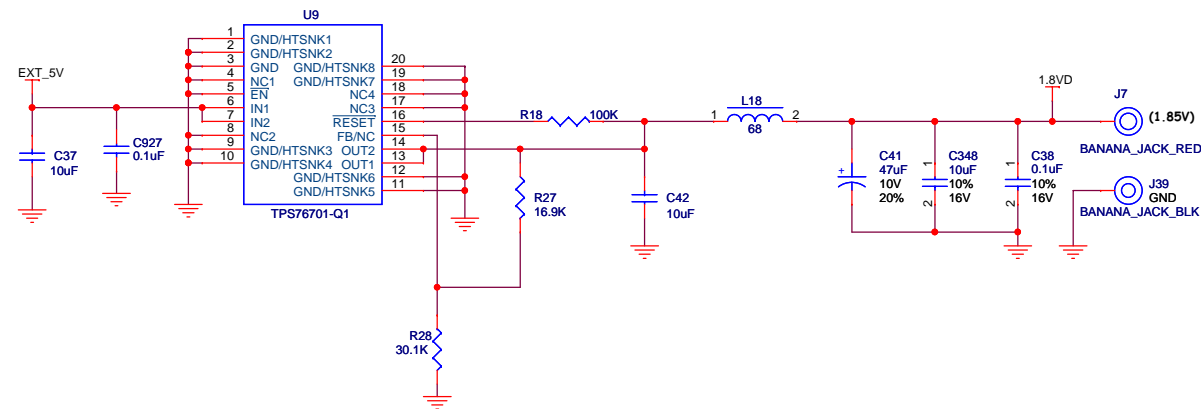
DNI = DO NOT INSTALL.



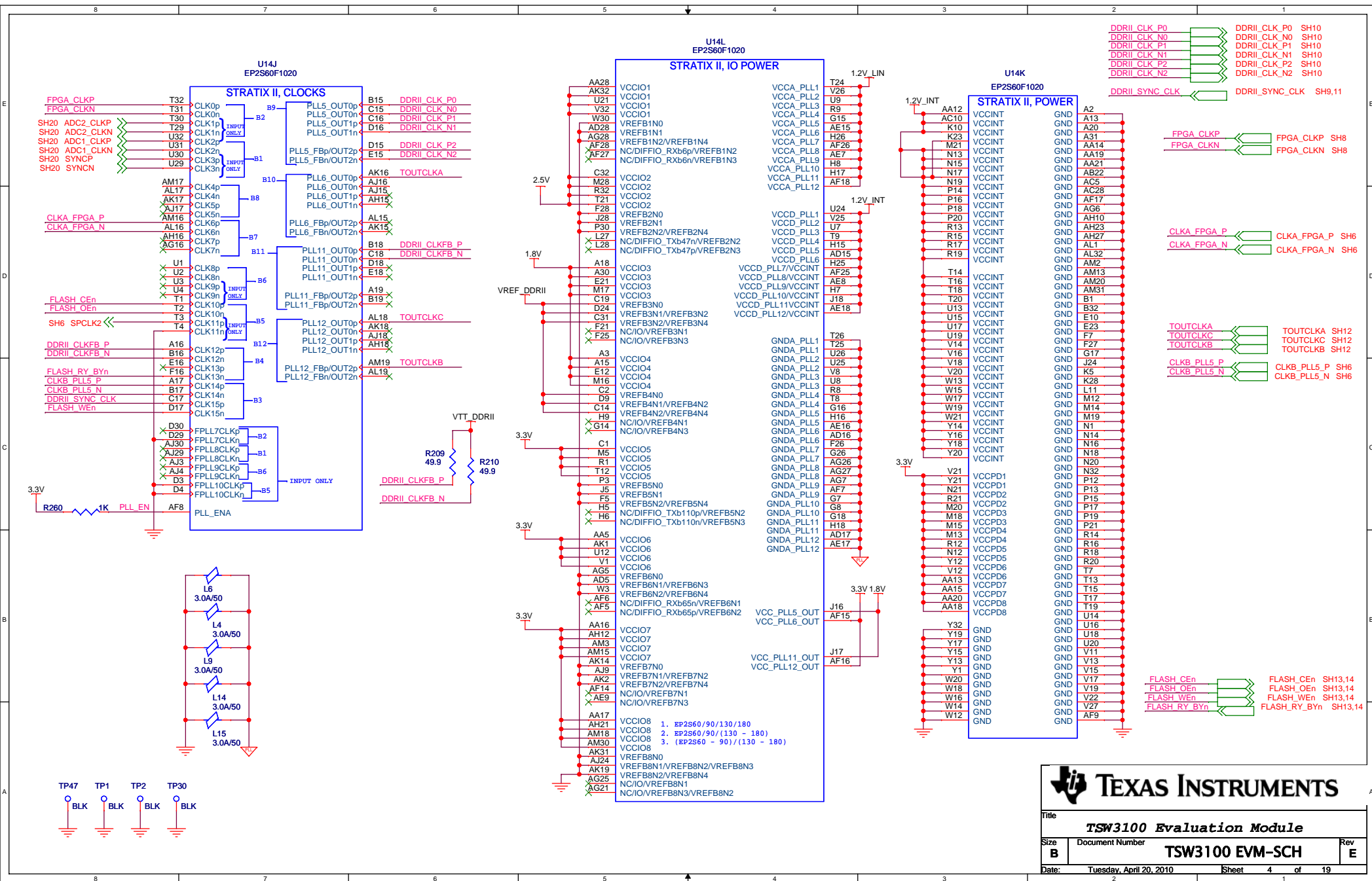
Title		TSW3100 Evaluation Module	
Size	B	Document Number	TSW3100 EVM-SCH
Engineer:	J. SETON	Date:	Tuesday, April 20, 2010
Drawn By:	ACD	Sheet	1 of 19
Rev	E		

Power Supply 2 of 2

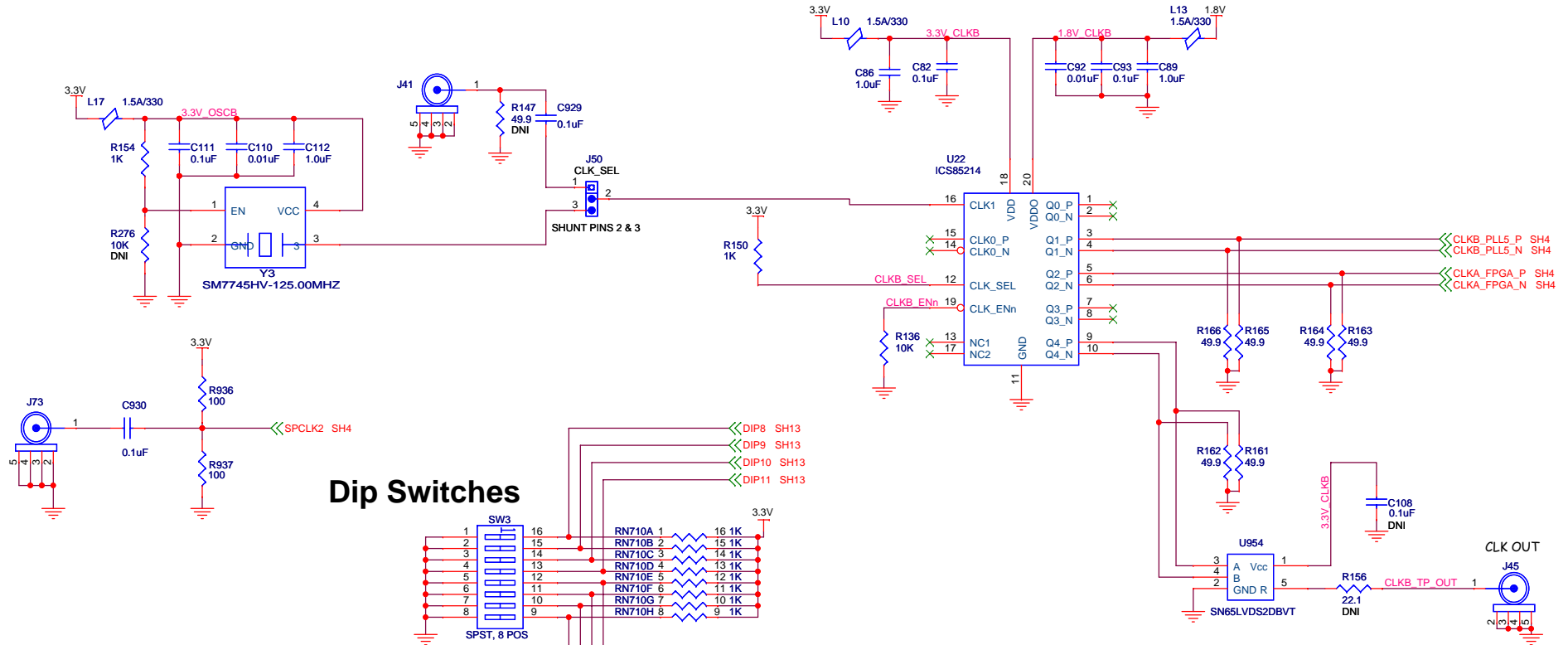




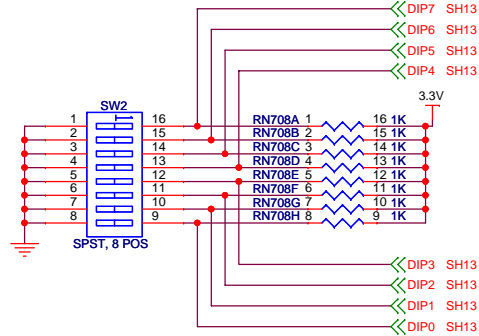
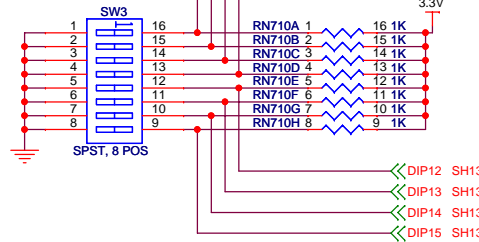
Title		
TSW3100 Evaluation Module		
Size	Document Number	Rev
B	TSW3100 EVM-SCH	E
Date:	Tuesday, April 20, 2010	Sheet 3 of 19



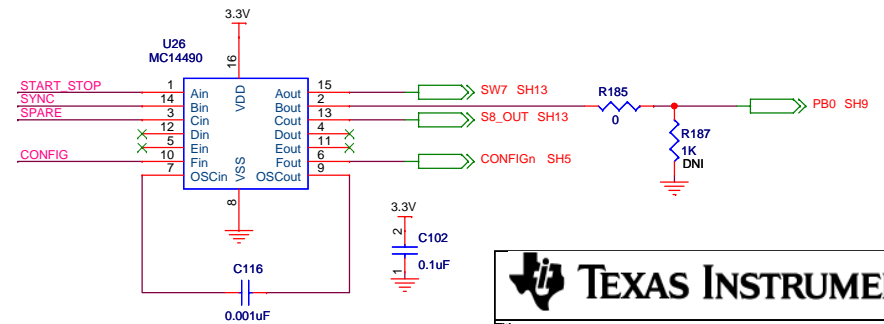
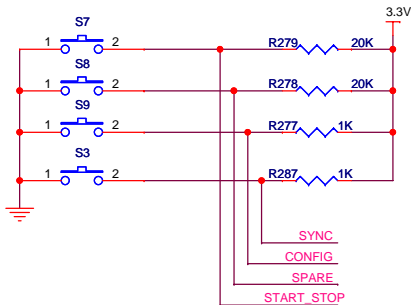
Clocks and Source Synchronous SMAs



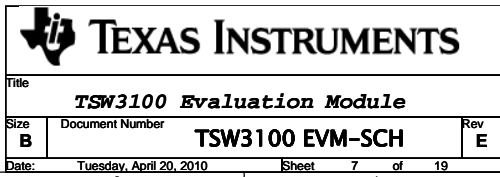
Dip Switches



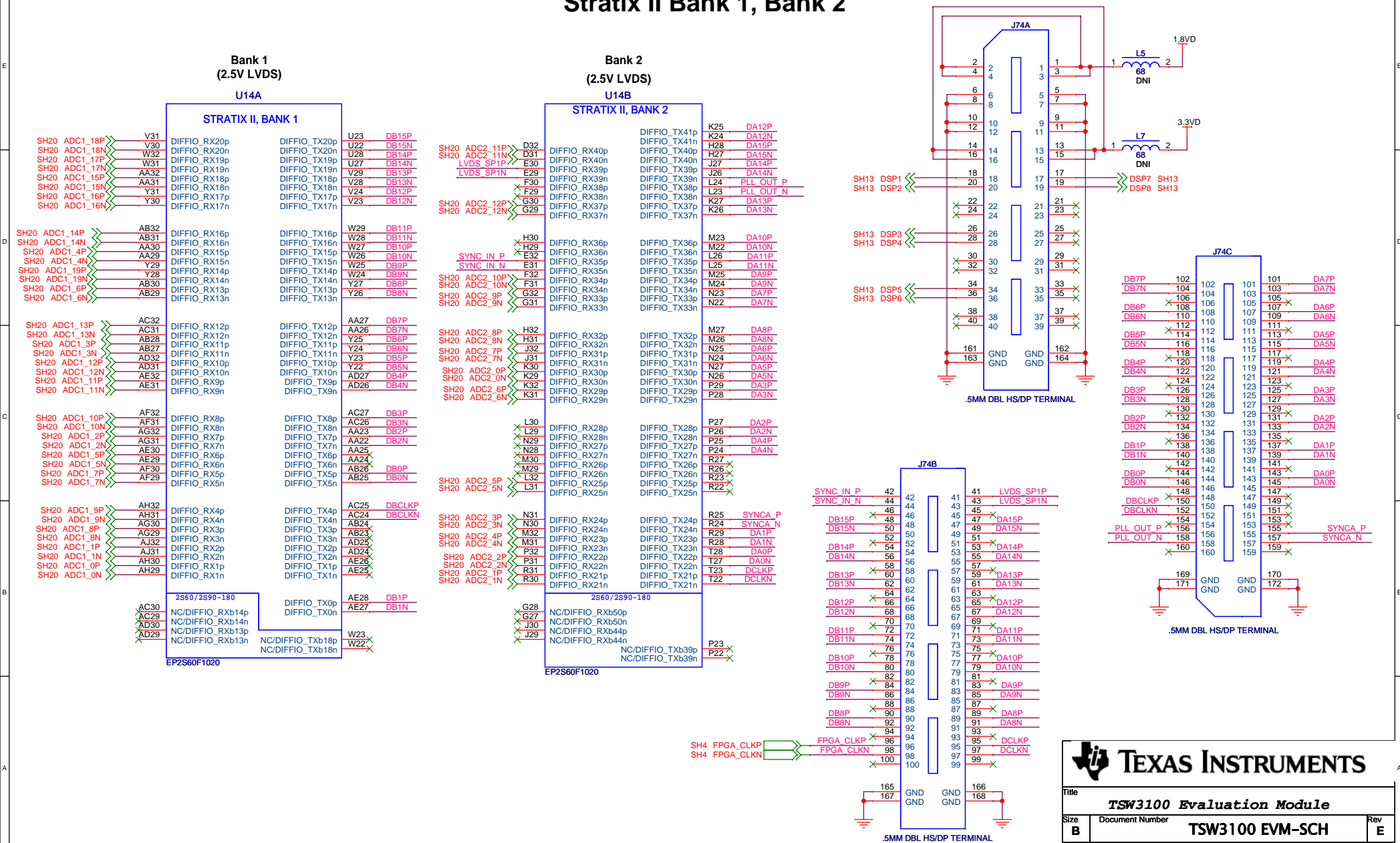
Push Buttons Switches



Title		
TSW3100 Evaluation Module		
Size	Document Number	Rev
B	TSW3100 EVM-SCH	E
Date:	Tuesday, April 20, 2010	Sheet 6 of 19

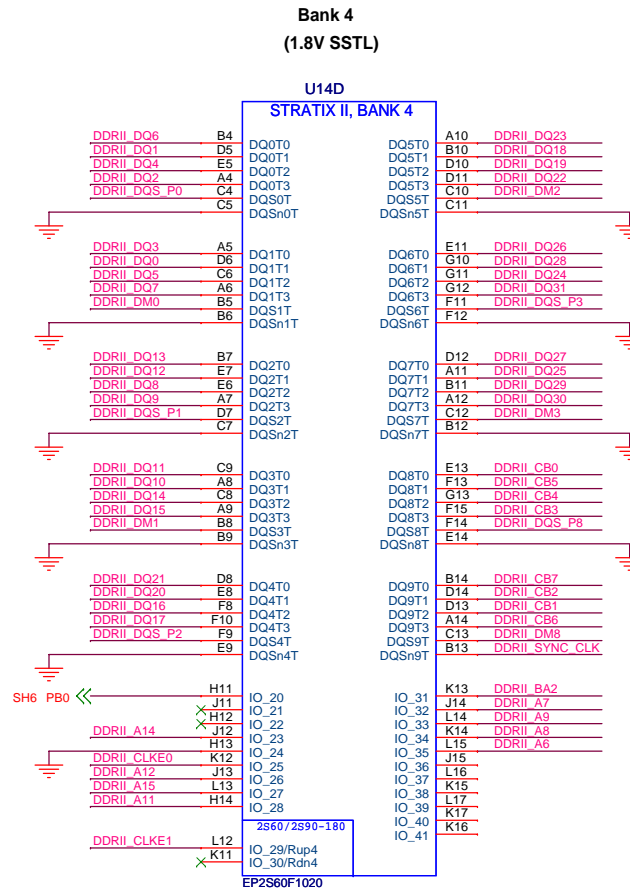
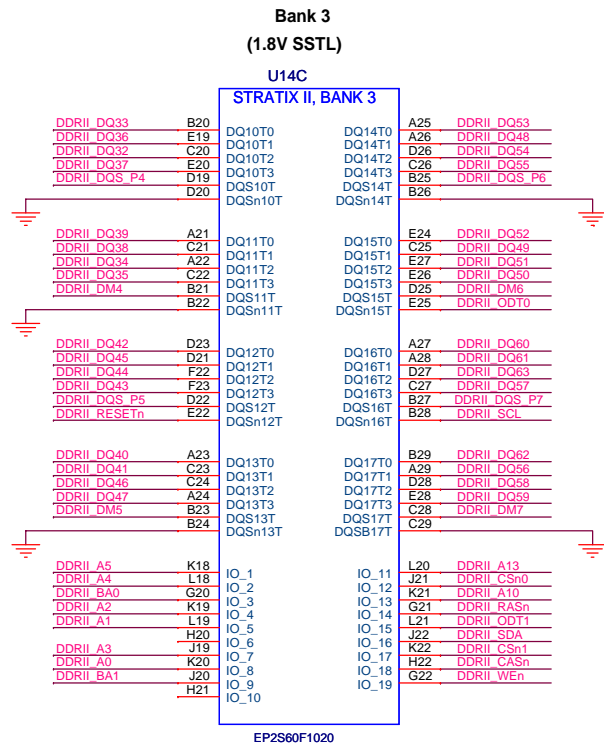


Stratix II Bank 1, Bank 2

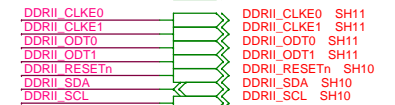
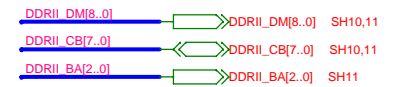


Title			
TSW3100 Evaluation Module			
Size	Document Number		Rev
B	TSW3100 EVM-SCH		E
Date:	Tuesday, April 20, 2010	Sheet	8 of 19

Stratix II Bank 3, Bank 4



DDRII DIMM INTERFACE

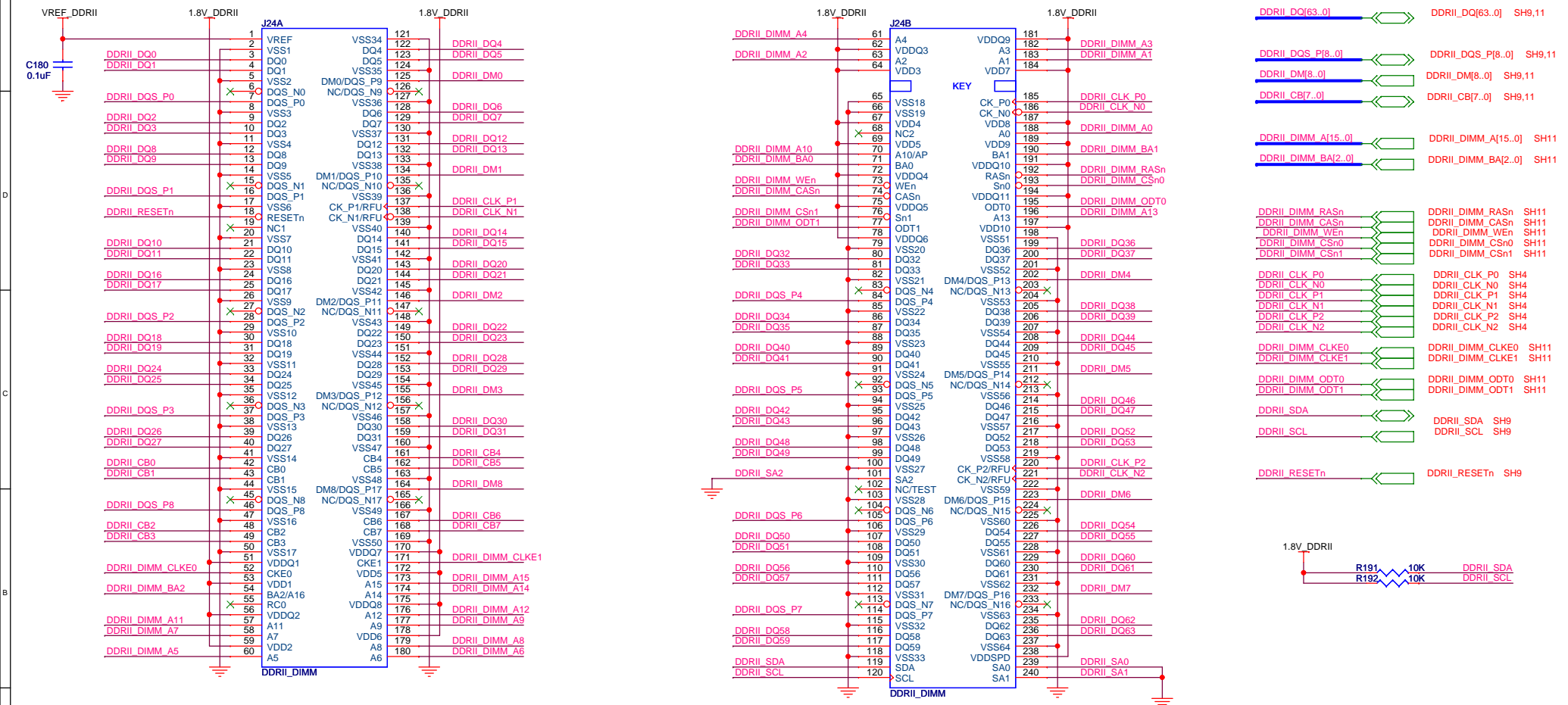


PUSH BUTTON INTERFACE

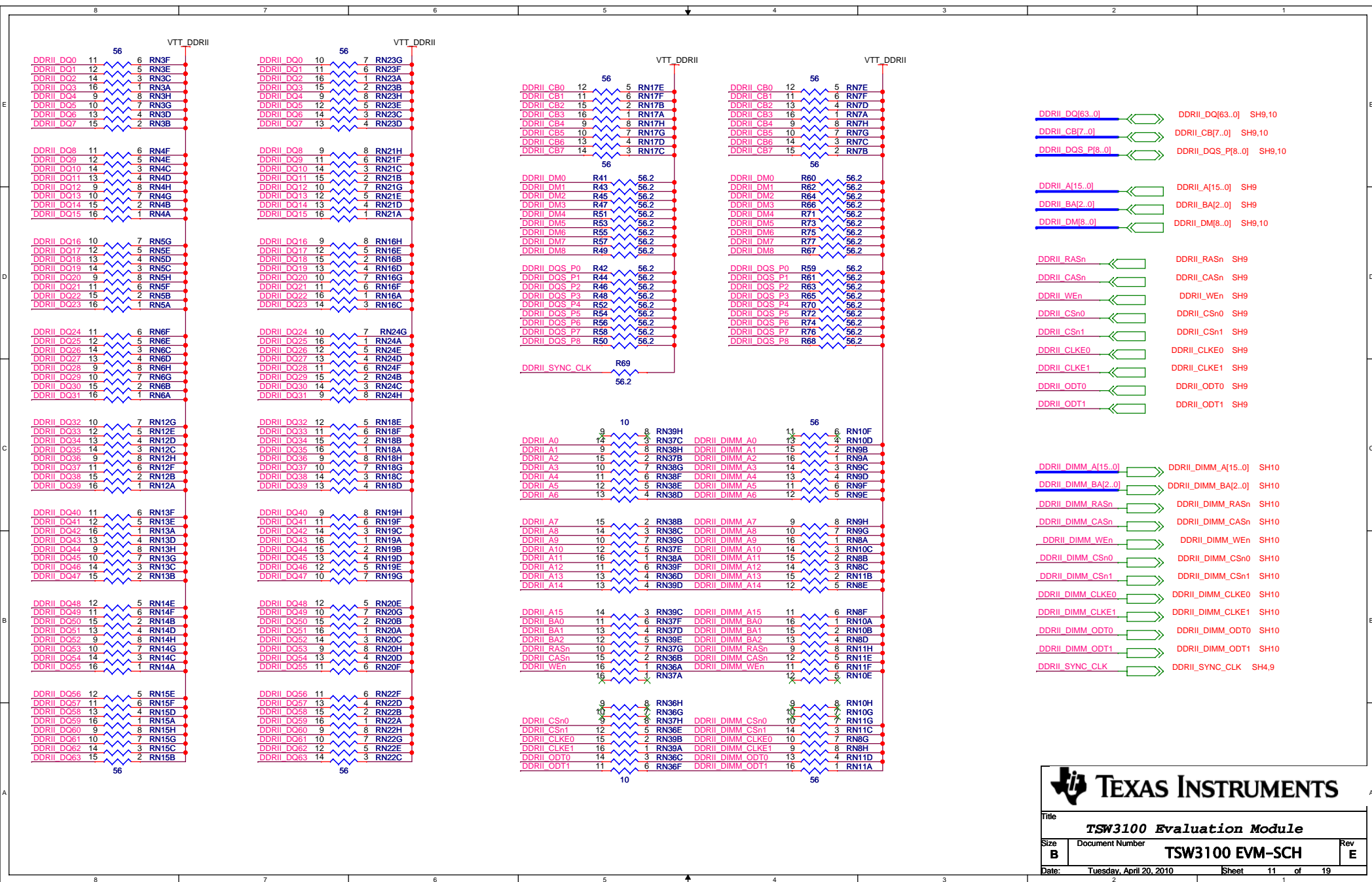


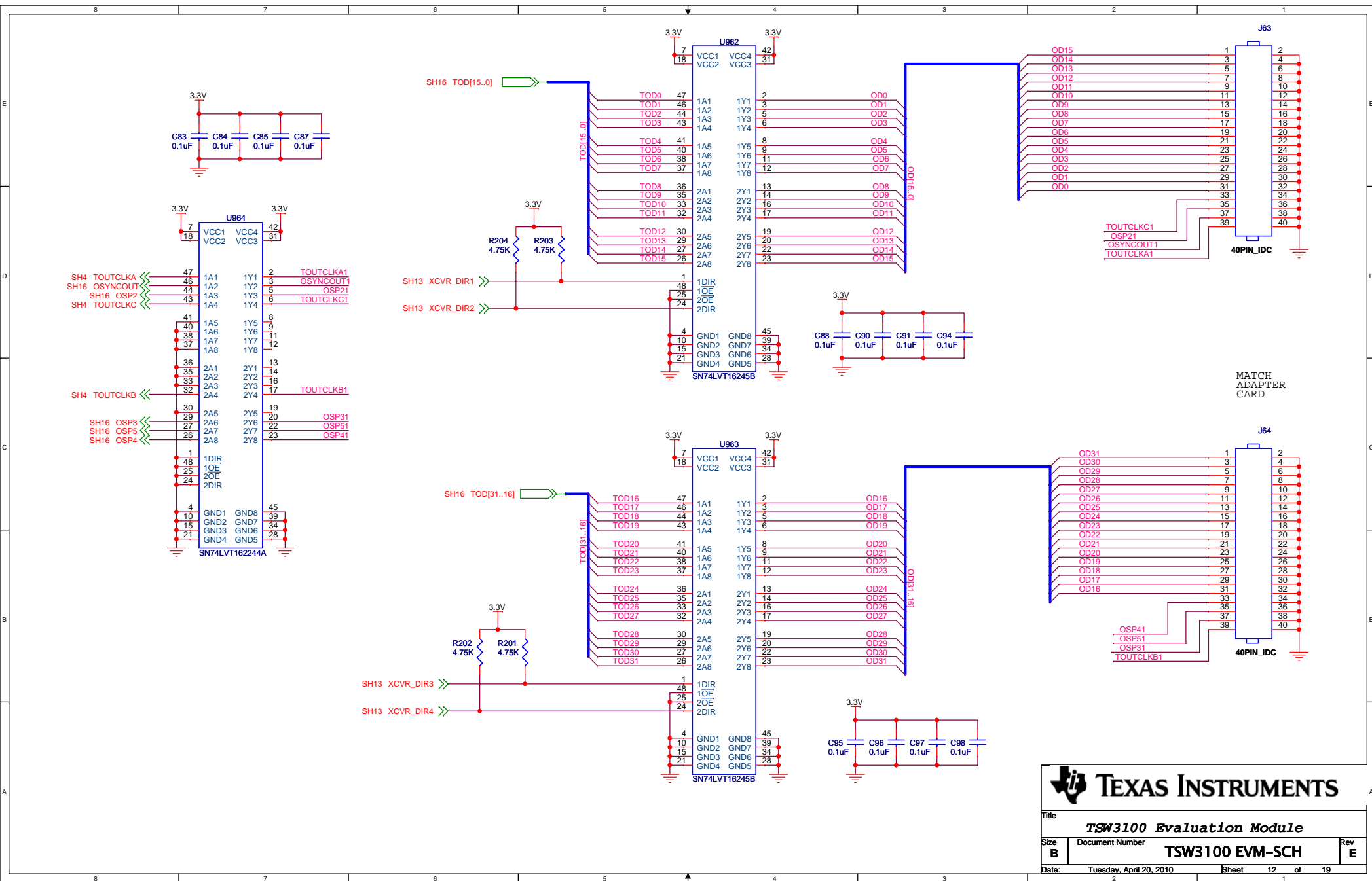
Title			
TSW3100 Evaluation Module			
Size	Document Number	Rev	
B	TSW3100 EVM-SCH	E	
Date:	Tuesday, April 20, 2010	Sheet	9 of 19

DDR-II SDRAM DIMM



Title			
TSW3100 Evaluation Module			
Size	Document Number		Rev
B	TSW3100 EVM-SCH		E
Date:	Tuesday, April 20, 2010	Sheet	10 of 19



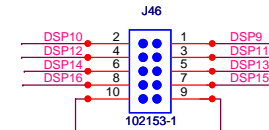
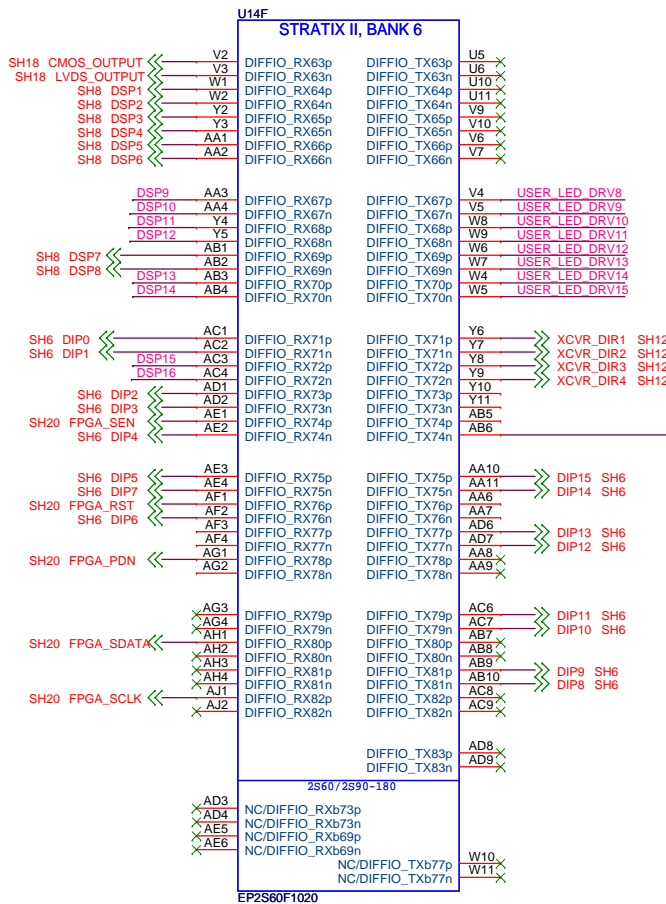


Stratix II Bank 5, Bank 6

BANK 5
(3.3V LVTTL)



BANK 6
(3.3V LVTT2)



USER_LED_DRV[15..8] USER_LED_DRV[15..8] SH18

SHARED BUS AND FLASH INTERFACE

FSE_D[31..0] FSE_D[31..0] SH14,17

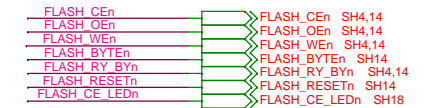
FSE_A[26..0] FSE_A[26..0] SH14,17

SRAM INTERFACE

SRAM_BEn[3..0]  SRAM_BEn[3..0] SH14

SRAM_WEn SH14
SRAM_OEn SH14

SRAM_CS_n SH14



NOTE: DNI = DO NOT INSTALL.

**TEXAS INSTRUMENTS**

Title	TSW3100 Evaluation Module
-------	----------------------------------

Size B	Document Number TSW3100 EVM-SCH
------------------	---

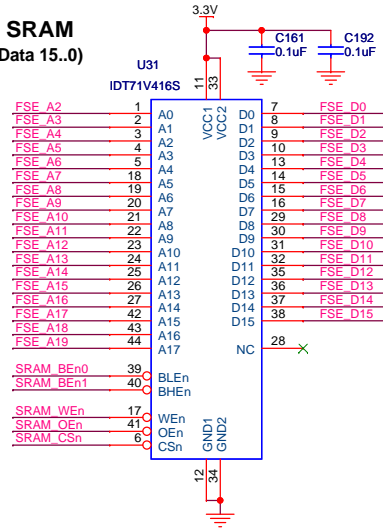
Date: Tuesday, April 20, 2010 Sheet 13 of 19

2	1
---	---

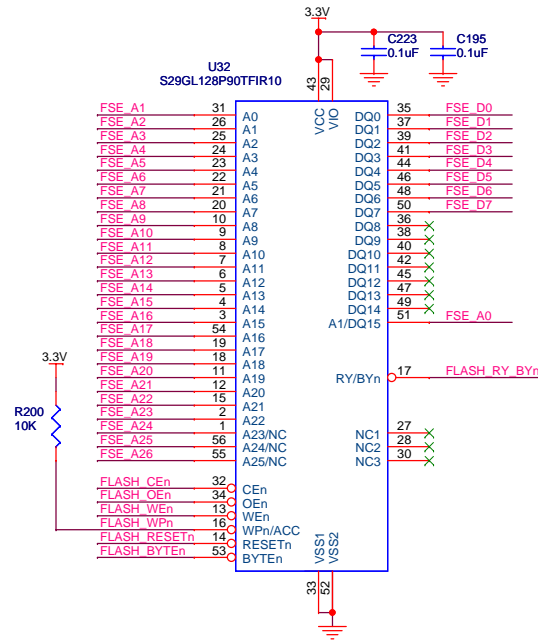
General Purpose Test Headers

SRAM, Flash

SRAM (Data 15..0)



Flash



FSE_D[31..0] FSE_D[31..0] SH13,17

FSE_A[26..0] FSE_A[26..0] SH13,17

FLASH INTERFACE

FLASH_CEEn FLASH_CEEn SH4,13

FLASH_OEn FLASH_OEn SH4,13

FLASH_WEn FLASH_WEn SH4,13

FLASH_RESEtEn FLASH_RESEtEn SH13

FLASH_BYtEn FLASH_BYtEn SH13

FLASH_RY_BYn FLASH_RY_BYn SH4,13

SRAM INTERFACE

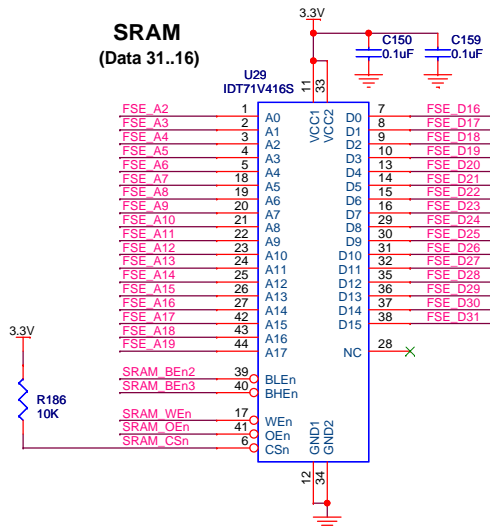
SRAM_BEn[3..0] SRAM_BEn[3..0] SH13

SRAM_WEn SRAM_WEn SH13

SRAM_OEn SRAM_OEn SH13

SRAM_CSn SRAM_CSn SH13

SRAM (Data 31..16)



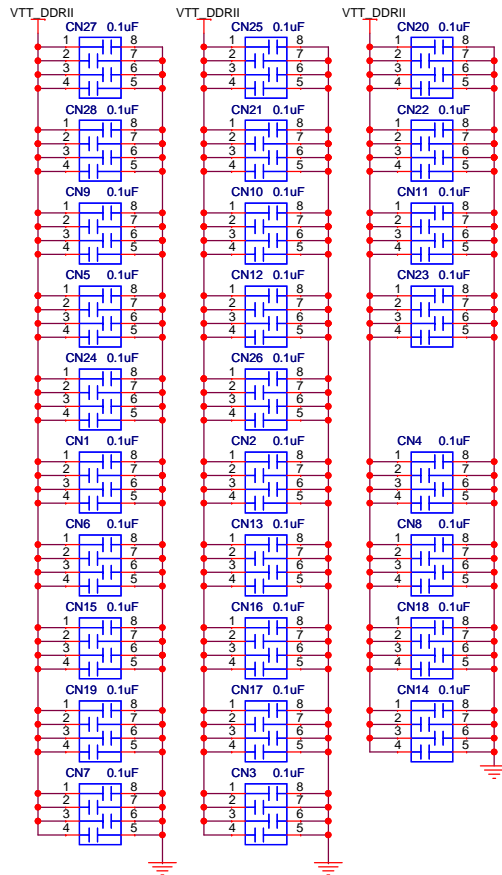
One bank of 256K x 32 SRAM (two 256K x 16 parts in parallel) = 1Mbyte of SRAM



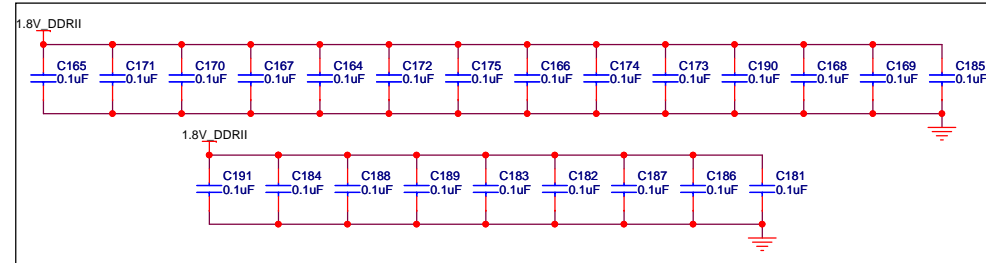
Title		
TSW3100 Evaluation Module		
Size	Document Number	Rev
B	TSW3100 EVM-SCH	E
Date:	Tuesday, April 20, 2010	Sheet 14 of 19

DDRII DIMM Decoupling

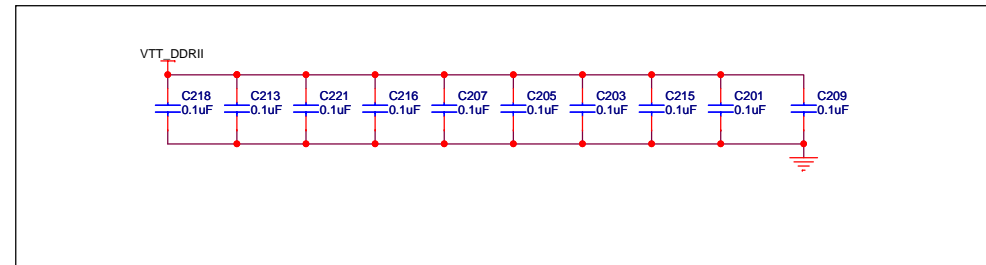
DDRII Decoupling for Data/Address/Control



DIMM VDD & VDDQ



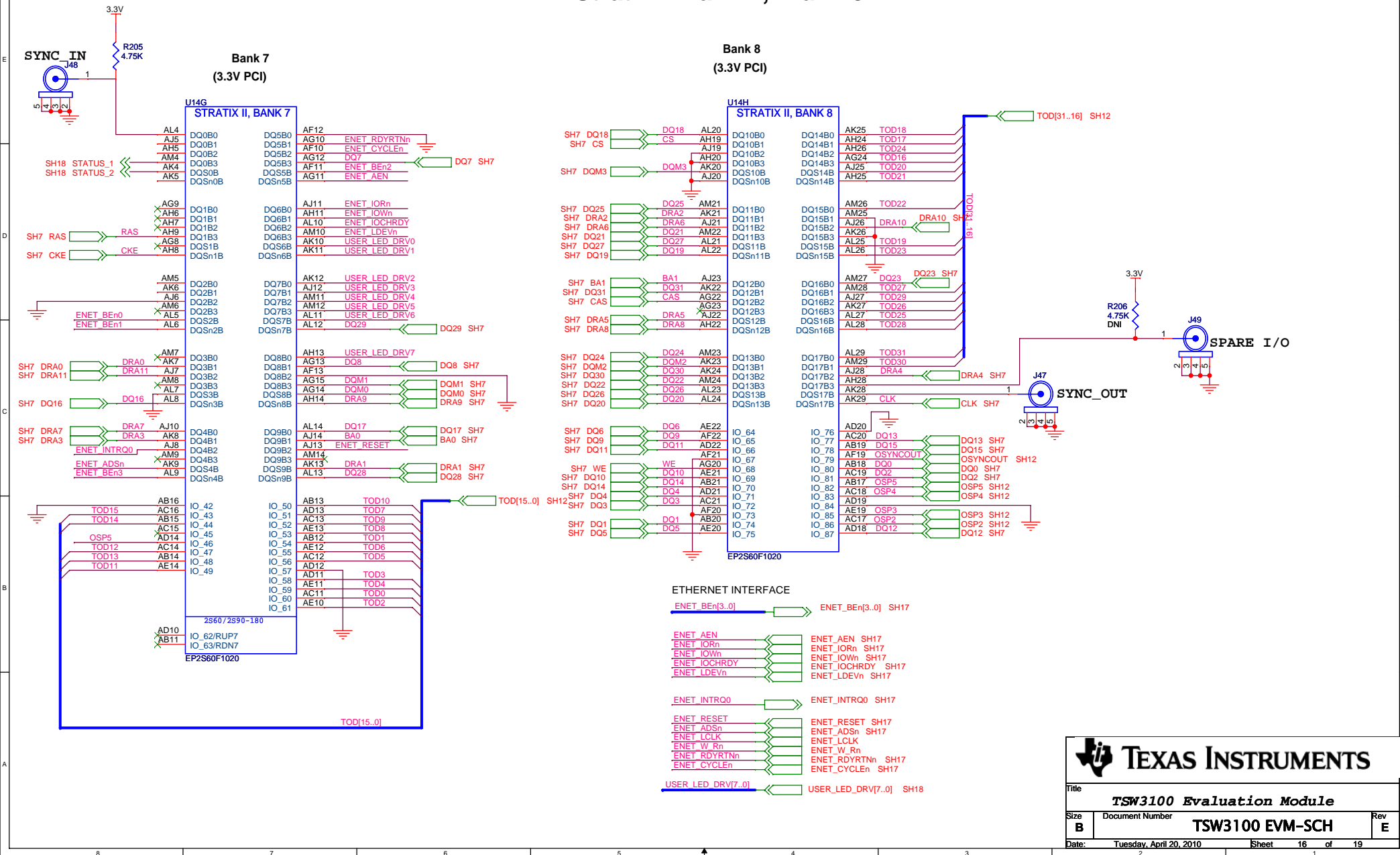
DDR Decoupling for Data Mask and DQS (Stratix II side)



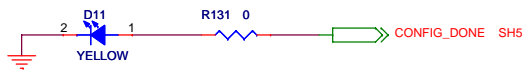
Title		
TSW3100 Evaluation Module		
Size	Document Number	Rev
B	TSW3100 EVM-SCH	E

Date: Tuesday, April 20, 2010 Sheet 15 of 19

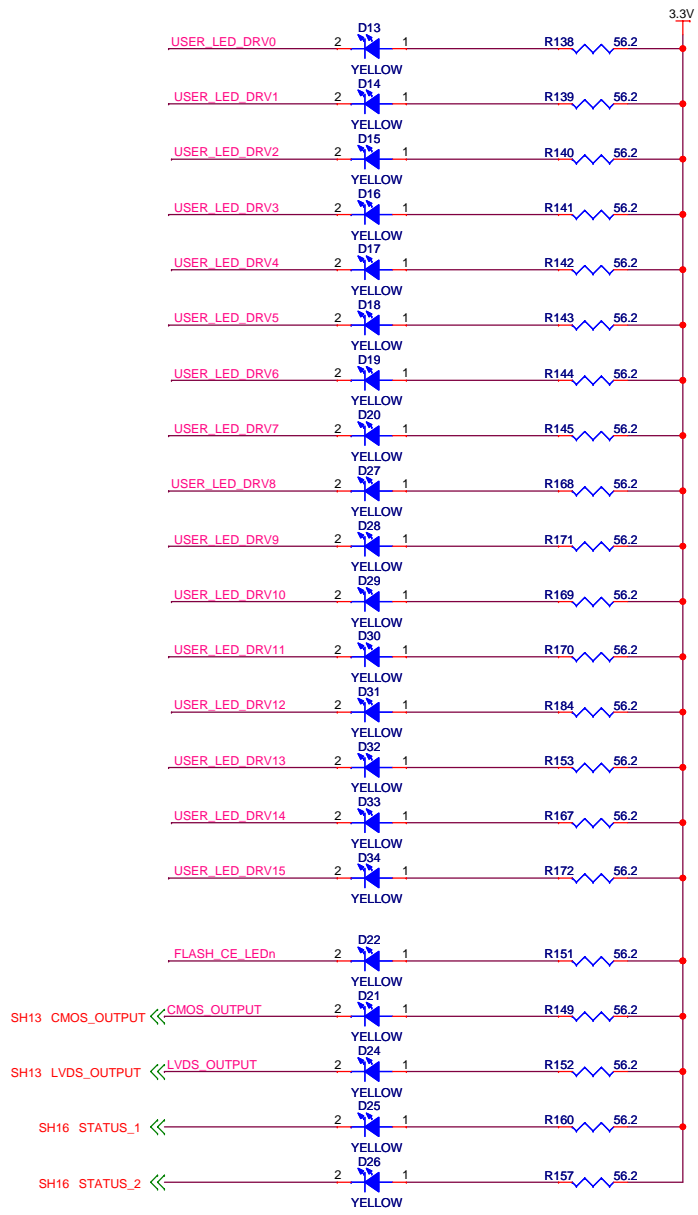
Stratix II Bank 7, Bank 8



Seven Segment Displays & LEDs

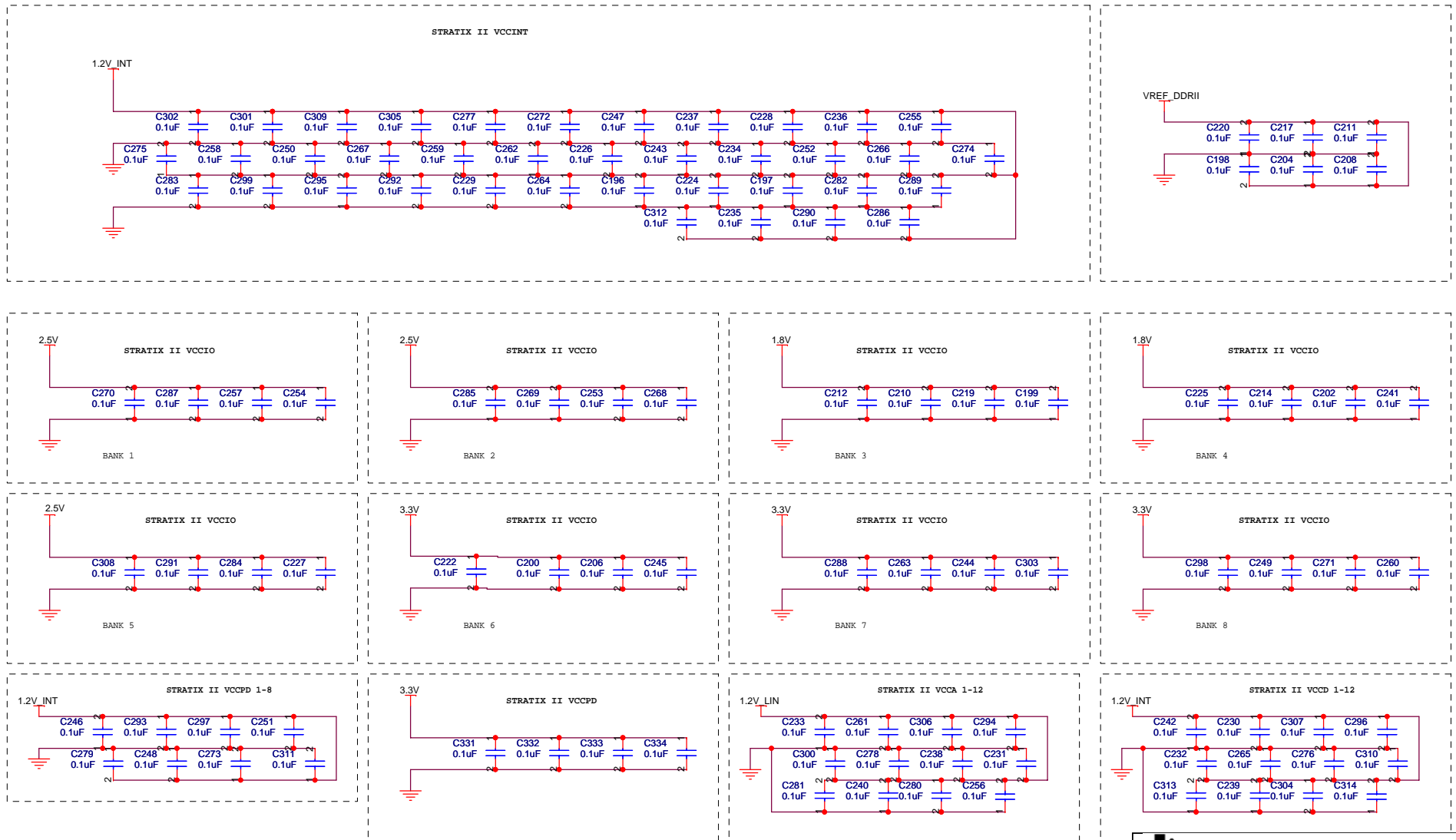


- FLASH_CE_LEDn <<< FLASH_CE_LEDn SH13
- USER_LED_DRV[7..0] <<< USER_LED_DRV[7..0] SH16
- USER_LED_DRV[15..8] <<< USER_LED_DRV[15..8] SH13



Title			TSW3100 Evaluation Module		
Size	Document Number		TSW3100 EVM-SCH		Rev
B					E
Date:	Tuesday, April 20, 2010		Sheet	18 of 19	

Stratix II Decoupling Capacitors



NOTE: PLACE ALL CAPACITORS ON THIS PAGE AS CLOSE AS POSSIBLE TO THE PINS OF THE STRATIX II DEVICE.



Title		
TSW3100 Evaluation Module		
Size	Document Number	Rev
B	TSW3100 EVM-SCH	E
Date:	Tuesday, April 20, 2010	Sheet 19 of 19

