

(ADC32J4X Channel A)
ADC34J4X
Channel A and D Input
Sheet 2

(ADC32J4X Channel B)
ADC34J4X
Channel B and C Input
Sheet 3

ADC32J4X / ADC34J4X
Sheet 4

AMPLIFIER
Sheet 5

LMK04828
Clock Input
Sheet 6

LMK04828
Inputs & Outputs
Sheet 7

LMK04828
Power & Config
Sheet 8

FMC Connector
Sheet 9

POWER SUPPLY
Sheet 10

POWER SUPPLY
Sheet 11

USB Interface
Sheet 12

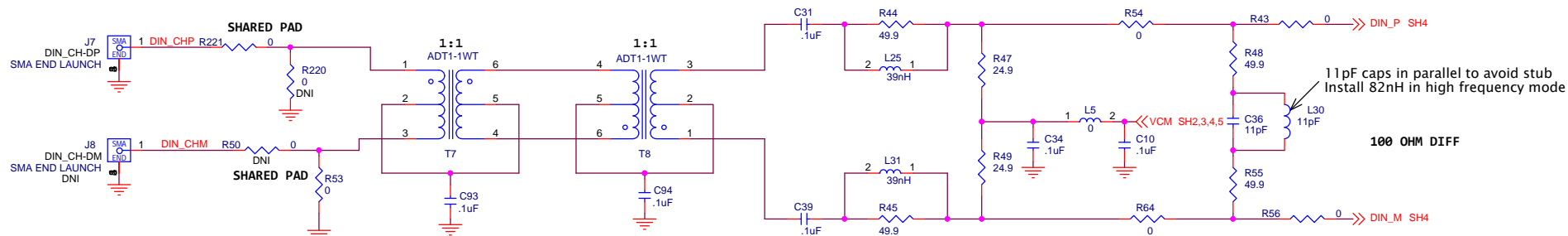
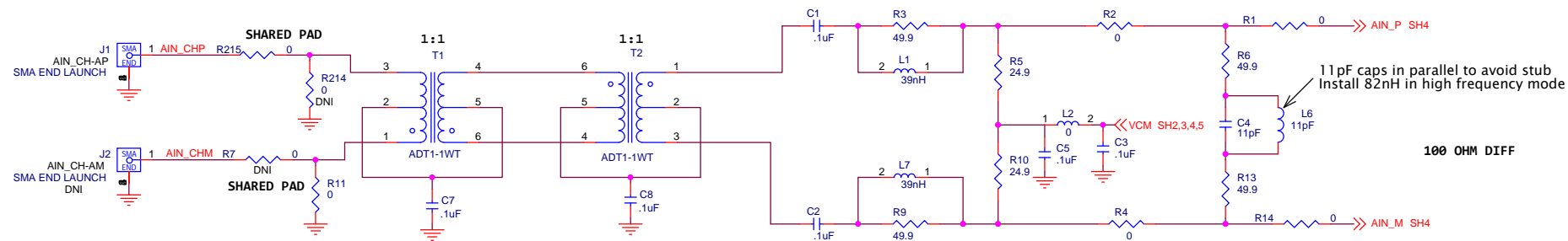


TEXAS INSTRUMENTS

Title				
ADC32JXX/ADC34JXX				
Size	Document Number			Rev
B	ADC3XJXX EVM			C
Date:	Monday, August 04, 2014		Sheet	1 of 12

Engineer: Chan Ken
PCB: Kim Le

DNI this page for ADC32JXX



ADC34J4X CHANNEL A, D INPUT

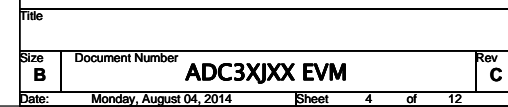
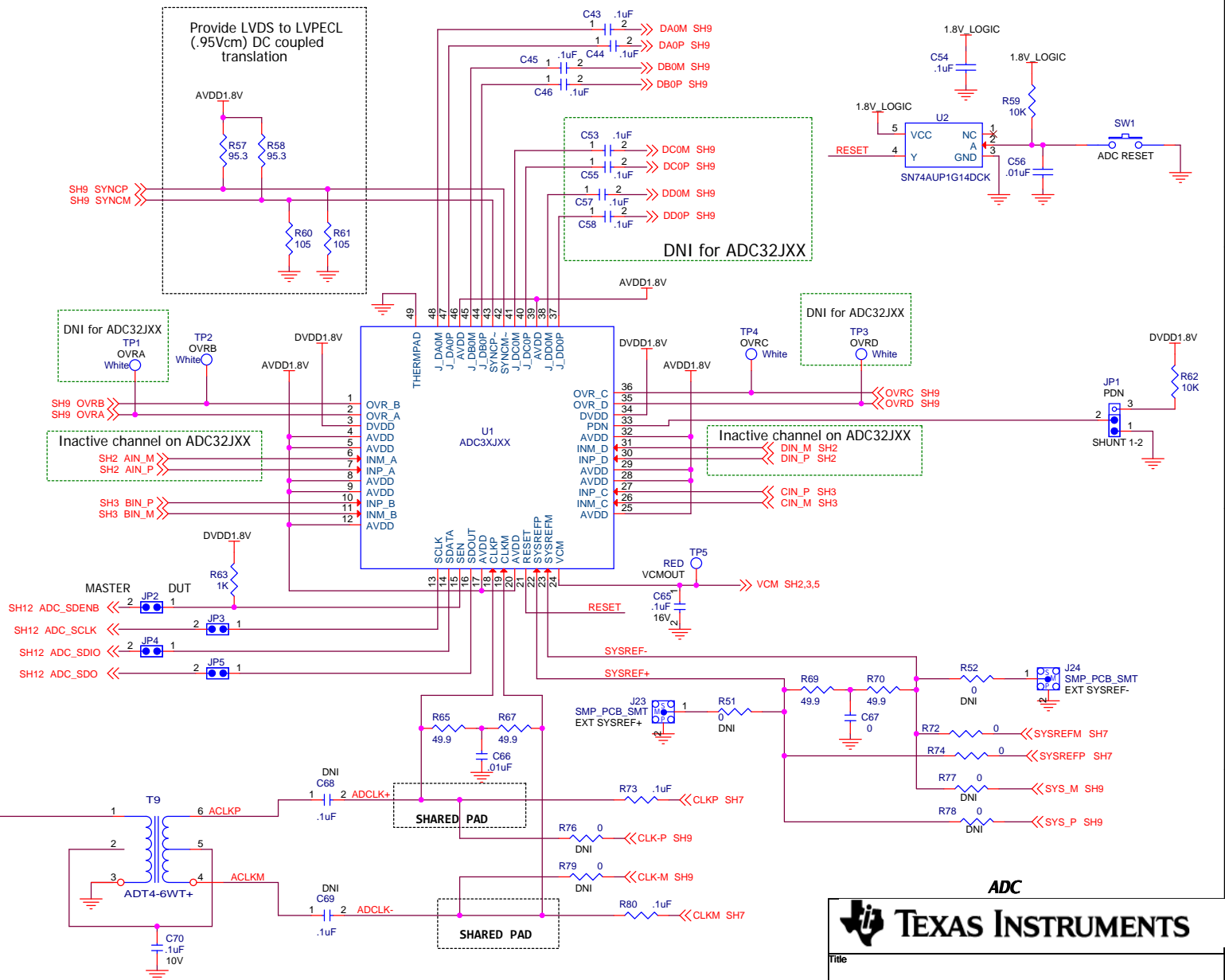
Title		
Size B	Document Number	Rev C
ADC3XJXX EVM		
Date:	Monday, August 04, 2014	Sheet 2 of 12

Local chip decoupling

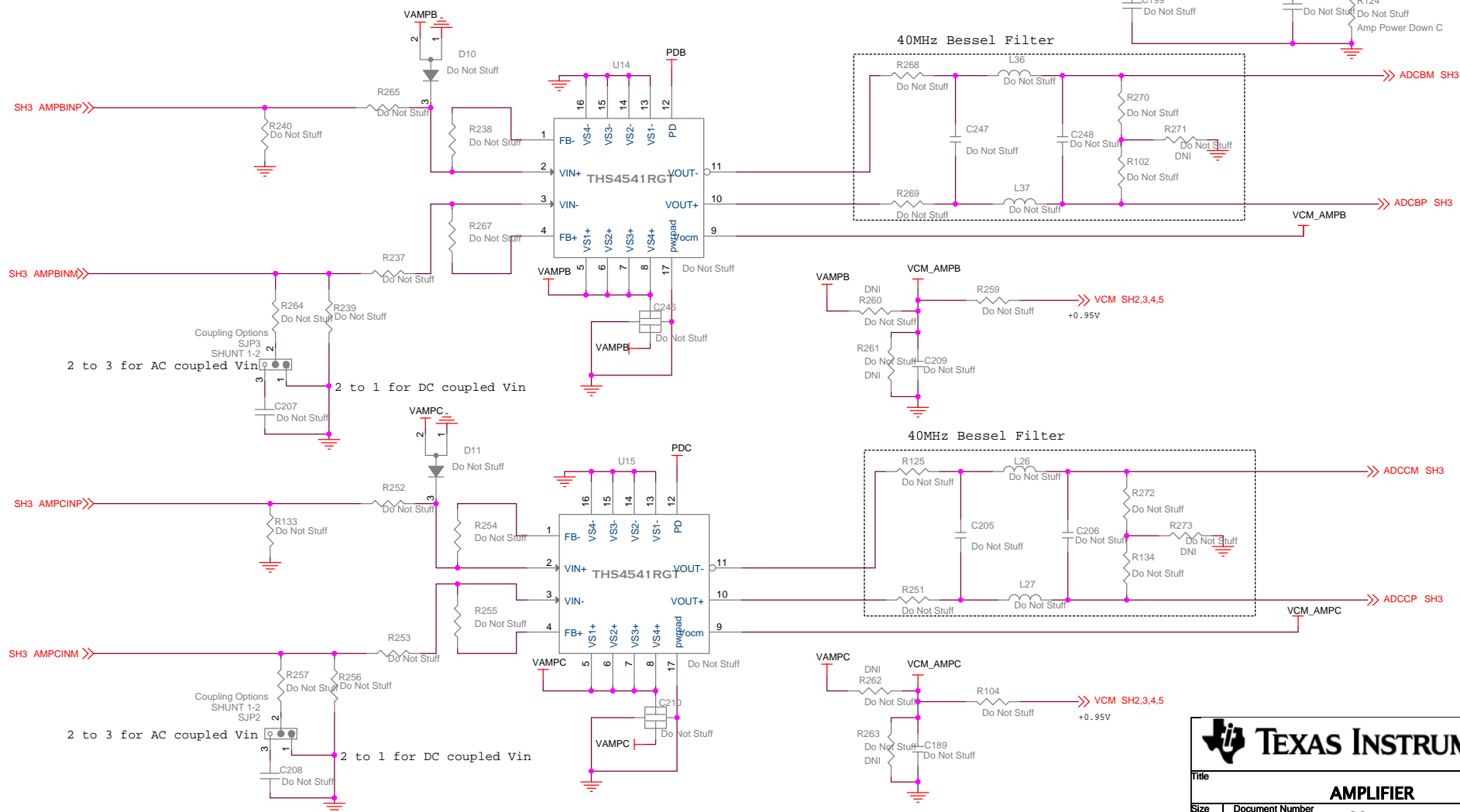
The diagram illustrates the local chip decoupling for a 74VHC00. It shows two power supply pins, VDD1 and VDD2, both connected to a 1.8V supply. Each pin has a 10V 1uF decoupling capacitor (C41, C42) connected to ground. A large decoupling network is connected to the VDD2 pin, consisting of a 10V 1uF capacitor (C47) in series with a parallel combination of 10V 1uF capacitors (C48-C60).

	LVPECL AC (default):	LCPECL	XFMR
R200, R201 (sh6)	0 ohm	7.5 ohm	
R204, R205 (sh6)	240 ohm	DNI	
R65, R67	50 ohm	50 ohm	100 ohm
R76, R79	DNI	DNI	DNI
R73, R80	0.1uF	0 ohm	DNI
C68, C69	DNI	DNI	0.1uF
C66	0.1uF	DNI	0.1uF

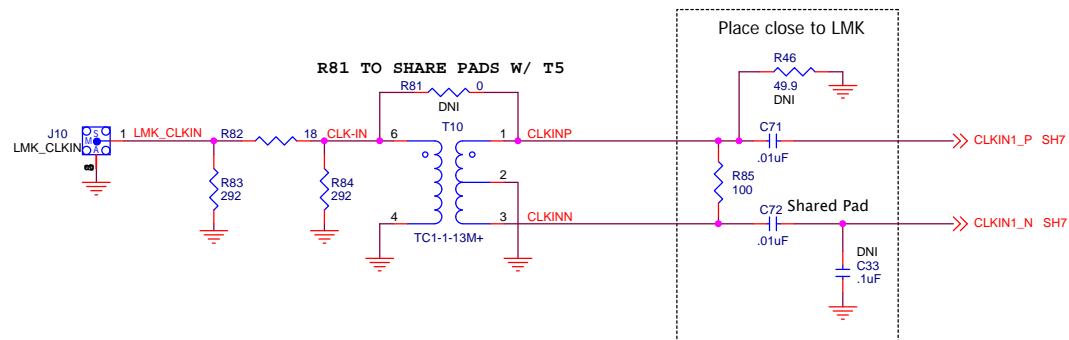
	LVPECL AC	LCPECL (default):
R202, R203 (sh6)	0 ohm	7.5 ohm
R106, R107 (sh6)	240 ohm	DNI
R69, R70	50 ohm	50 ohm
R77, R78	DNI	DNI
R72, R74	0.1uF	0 ohm
C67	0.1uF	0 ohm



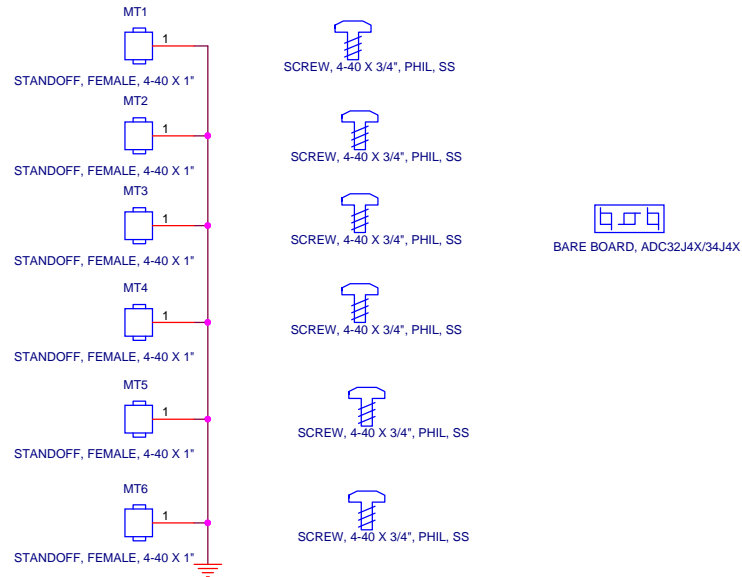
DNI THIS PAGE FOR ADC34JXXEVM



Title				
AMPLIFIER				
Size	Document Number			Rev
B	ADC3JXX EVM			C
Date:	Monday, August 04, 2014		Sheet	5 of 12



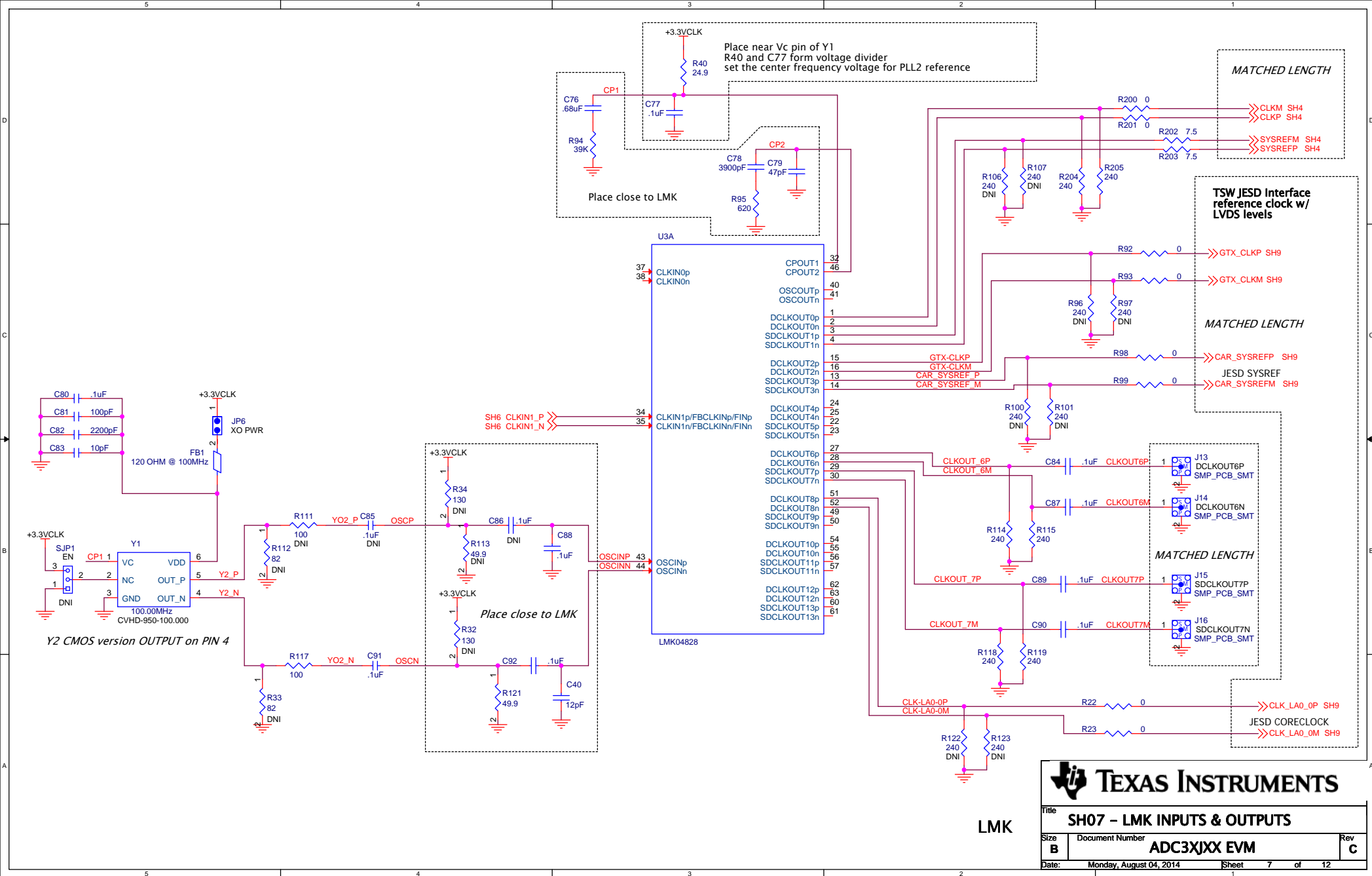
MECHANICAL PARTS

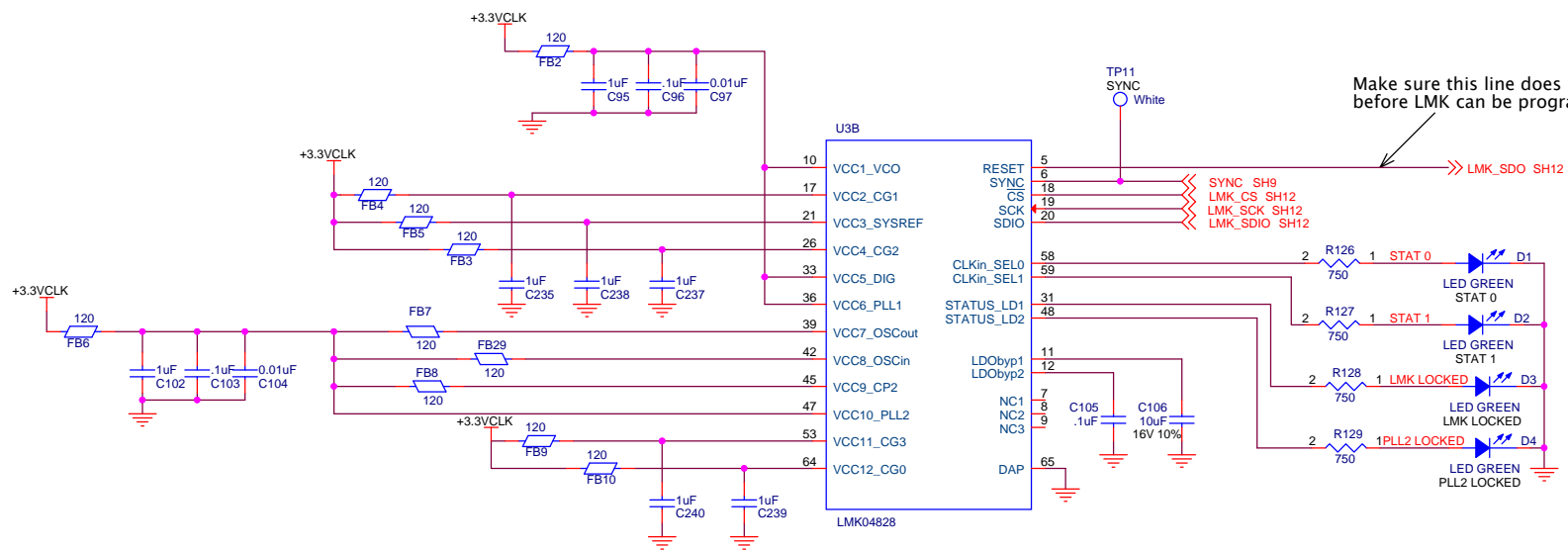


CLOCK INPUT



Title		
SH06 - CLOCK INPUT		
Size	Document Number	Rev
B	ADC3XJXX EVM	C
Date:	Monday, August 04, 2014	Sheet 6 of 12

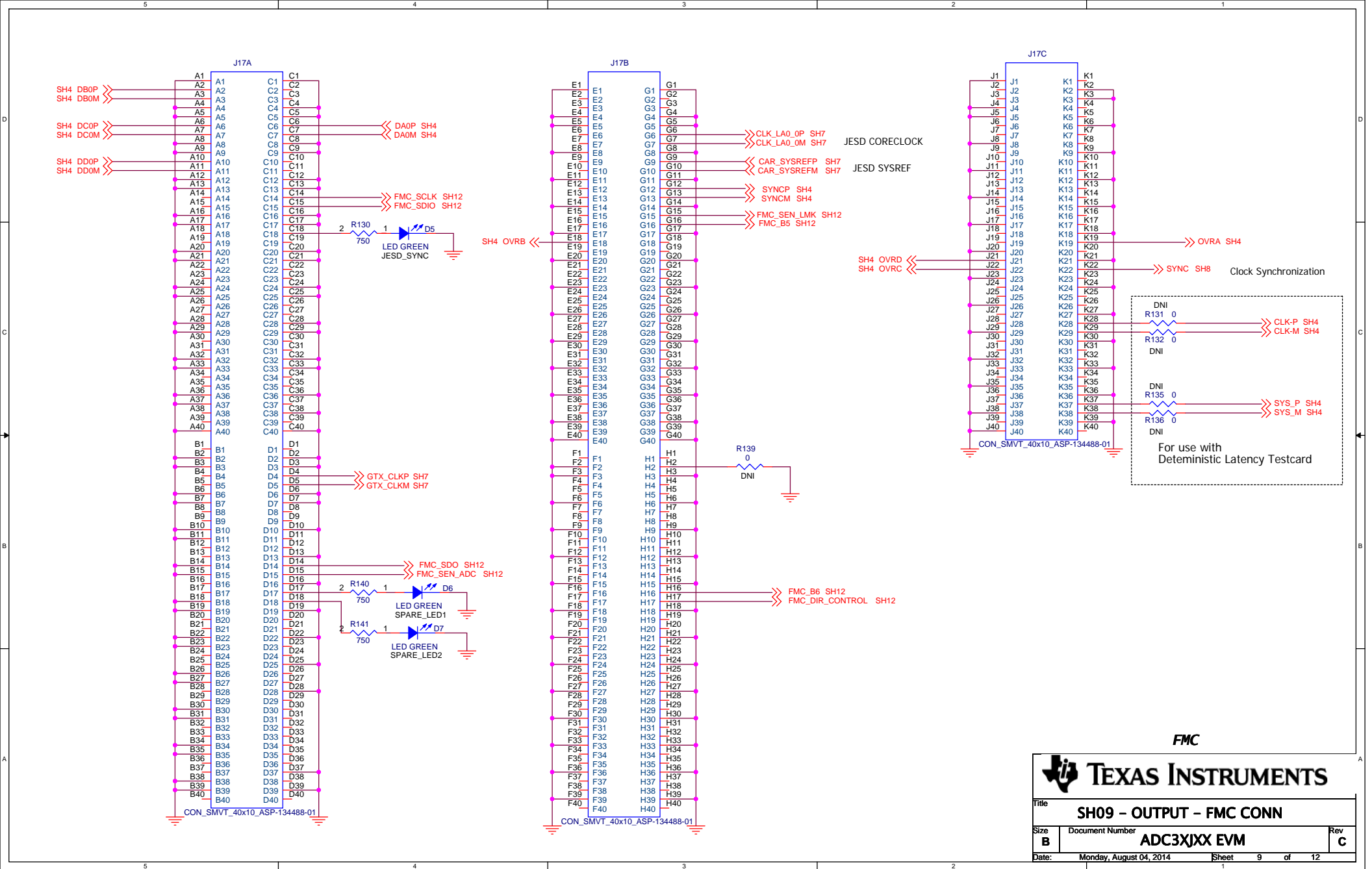




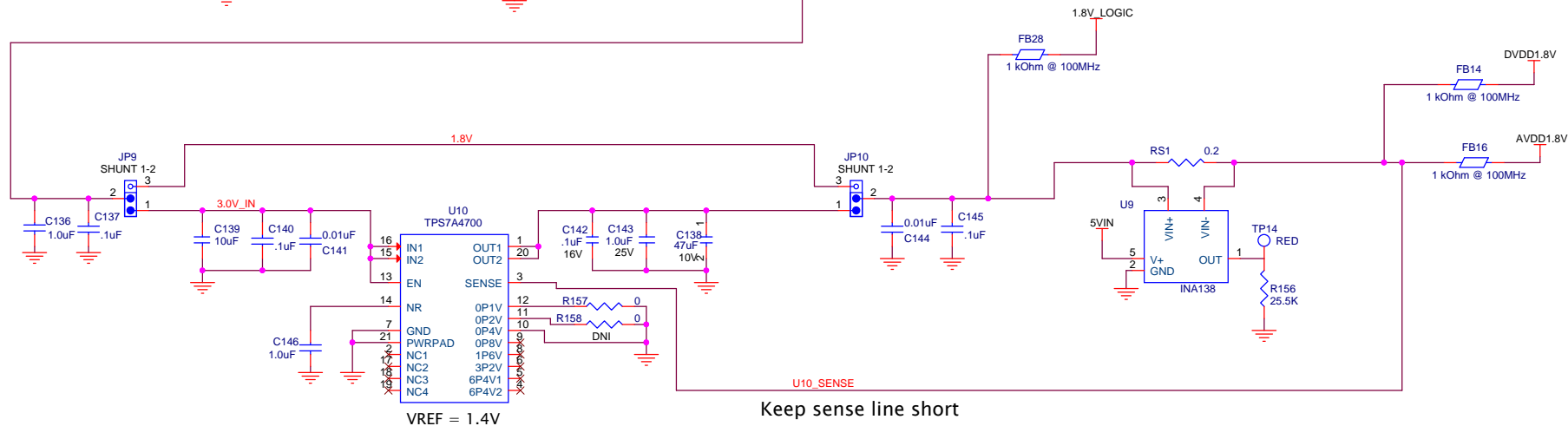
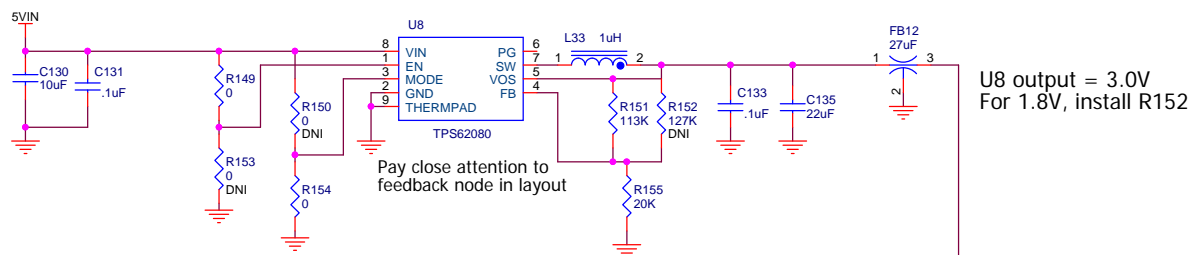
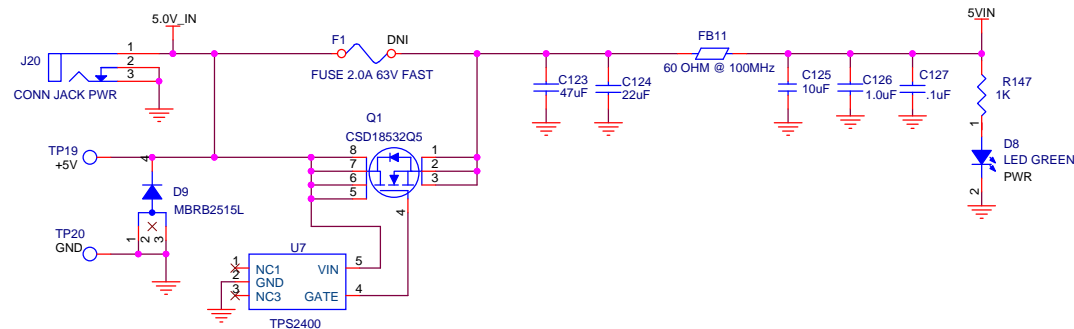
LMK

TEXAS INSTRUMENTS

Title SH08 - LMK POWER & CONF		
Size B	Document Number ADC3XJXX EVM	Rev C
Date: Monday, August 04, 2014	Sheet 8	of 12

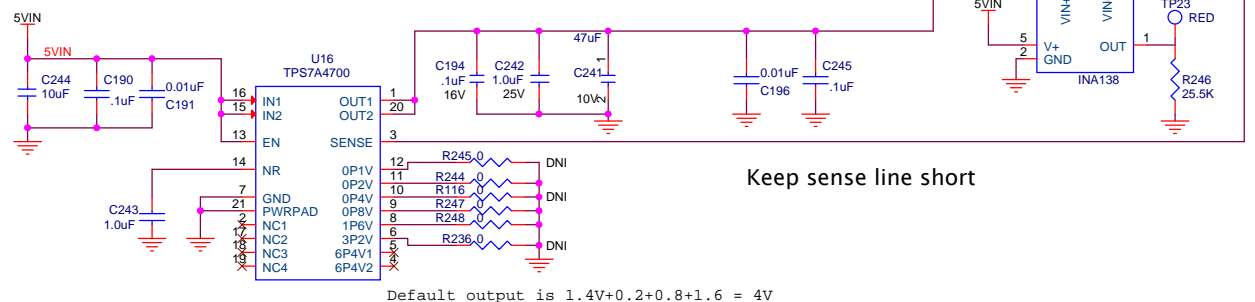
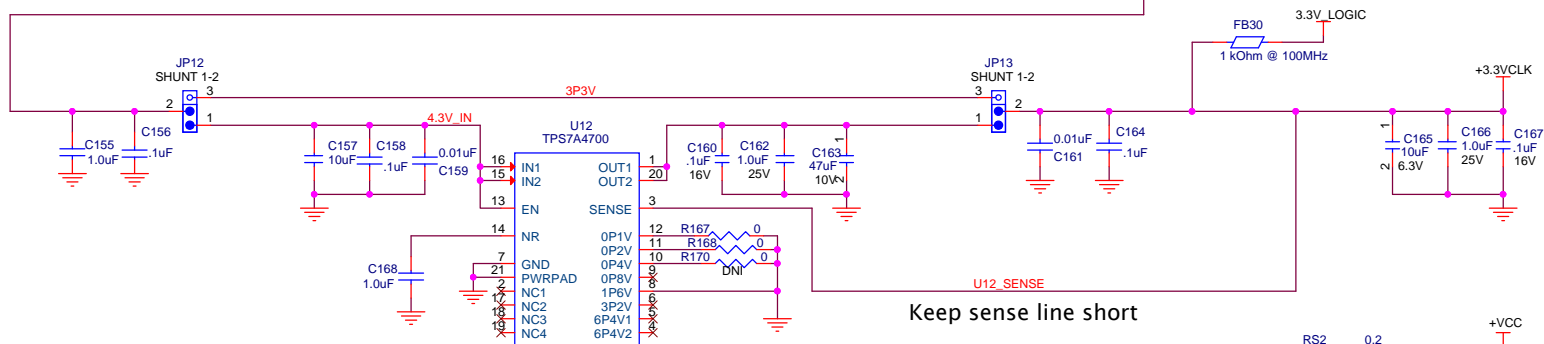
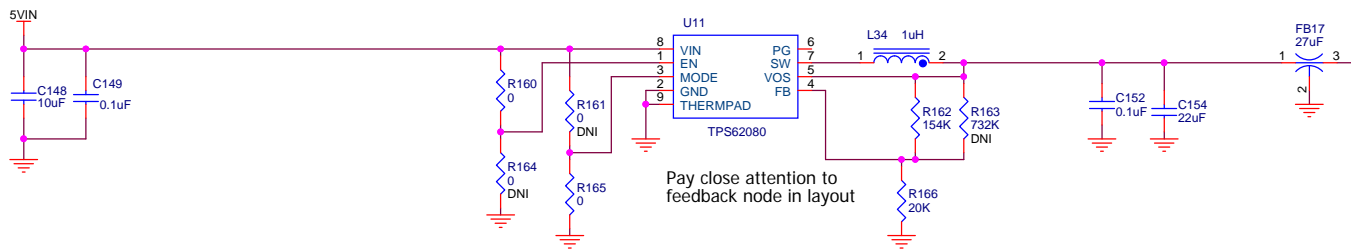


Title		
SH09 - OUTPUT - FMC CONN		
Size	Document Number	Rev
B	ADC3XJXX EVM	C
Date:	Monday, August 04, 2014	Sheet 9 of 12



TEXAS INSTRUMENTS

Title SH10 - POWER SUPPLIES		
Size B	Document Number ADC3XJXX EVM	Rev C
Date: Monday, September 08, 2014	Sheet 10	of 12

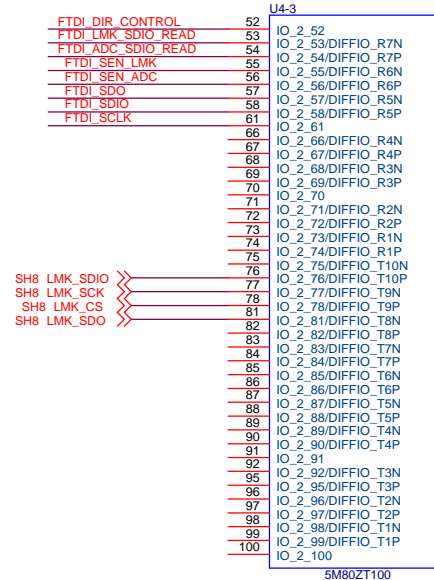
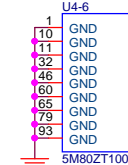
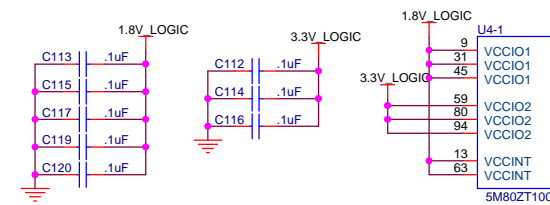
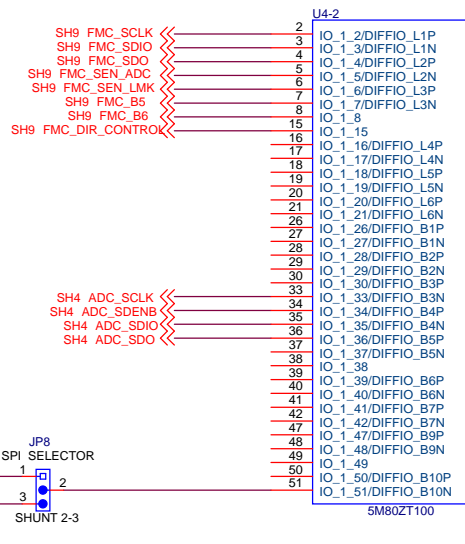
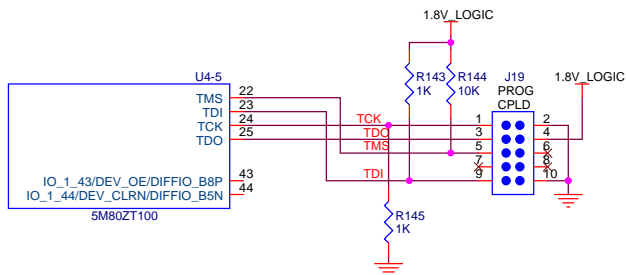
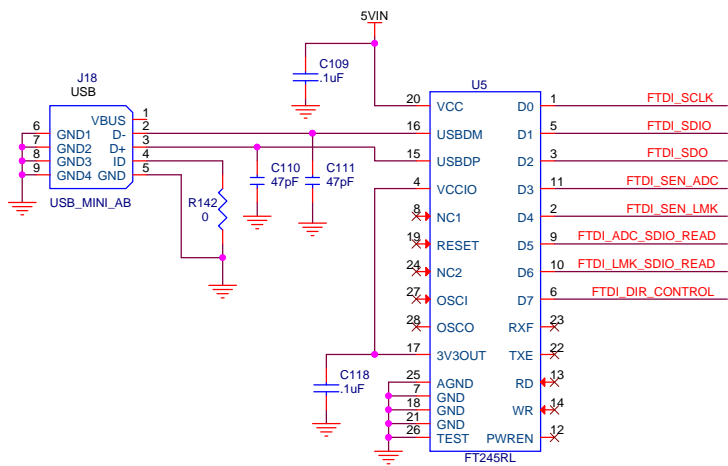


3.3V



Title		
SH11 - POWER SUPPLIES		
Size	Document Number	Rev
B	ADC3XJXX EVM	C
Date: Monday, August 04, 2014		
Sheet 11 of 12		

DNI = DO NOT INSTALL



USB INTERFACE

TEXAS INSTRUMENTS

Title: **SH12 - USB INTERFACE**

Size: **B** Document Number: **ADC3XJXX EVM** Rev: **C**

Date: **Monday, August 04, 2014** Sheet: **12** of **12**