



ABSTRACT

This document is provided with the DRV8410EVM, DRV8411EVM, and DRV8411AEVM evaluation modules (EVM) as a supplement to the DRV8410, DRV8411, DRV8411A datasheet. This user's guide details how to setup the EVM and install the included Graphical User Interface (GUI) program to control the motor driver.

Note

This is a pre-production evaluation module and can differ from the final production version.

CAUTION

Read the user's guide before use.

CAUTION



Caution hot surfaces.
Contact can cause burns.
Do not touch!

Table of Contents

1 Introduction	3
1.1 Overview.....	3
1.2 Features.....	3
2 Connection Descriptions	5
3 EVM Setup Guide	7
3.1 Hardware Setup.....	7
3.2 GUI Installation.....	7
4 GUI Overview	10
5 Operating Modes	12
5.1 Stepper Motor.....	12
5.2 Brushed DC Motor.....	12

List of Figures

Figure 1-1. MD062 Board for DRV8410EVM and DRV8411EVM.....	3
Figure 1-2. MD063 Board for DRV8411AEVM.....	3
Figure 2-1. DRV8410EVM and DRV8411EVM Overview of Connectors and Test Points.....	5
Figure 2-2. DRV8411AEVM Overview.....	5
Figure 3-1. GUI on dev.ti.com.....	8
Figure 3-2. GUI Installer Start Window.....	8
Figure 3-3. Default GUI and Runtime Install Location.....	9
Figure 3-4. Window After Successful Installation.....	9
Figure 4-1. DRV841xEVM GUI Home Page.....	10
Figure 4-2. Program Device.....	10
Figure 4-3. DRV8410 and DRV8411 Motor Control Page.....	11
Figure 5-1. Stepper Motor Control Page.....	12

List of Tables

Table 2-1. Test Points and Jumpers.....	5
---	---

Trademarks

All trademarks are the property of their respective owners.

1 Introduction

1.1 Overview

The DRV841xEVM is the evaluation module for the [DRV8410](#), [DRV8411](#), and [DRV8411A](#) family of low voltage dual h-bridge motor drivers capable of driving one stepper motor or two brushed DC motors. Please read the datasheet of each product to learn more about any of these drivers. There are a total of three EVMs which are DRV8410EVM, DRV8411EVM, and DRV8411AEVM. The DRV8410EVM and DRV8411EVM share the same hardware (MD062) but two different BOM variants. DRV8410EVM is MD062-001 and DRV8411EVM is MD062-002. The DRV8411AEVM is it's own board design (MD063) but shares many similarities with the MD062 board. In this user's manual, both of these boards will be discuss. [Figure 1-1](#) and [Figure 1-2](#) shows a 3D image of the MD062 and MD063 respectively.

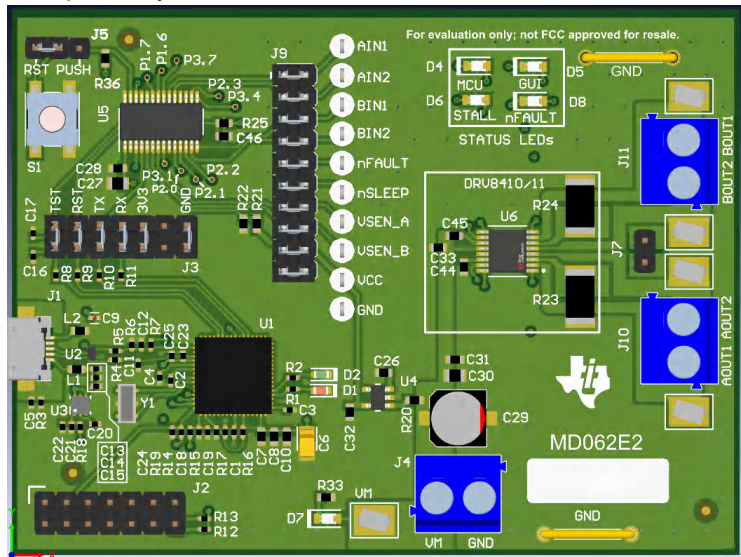


Figure 1-1. MD062 Board for DRV8410EVM and DRV8411EVM

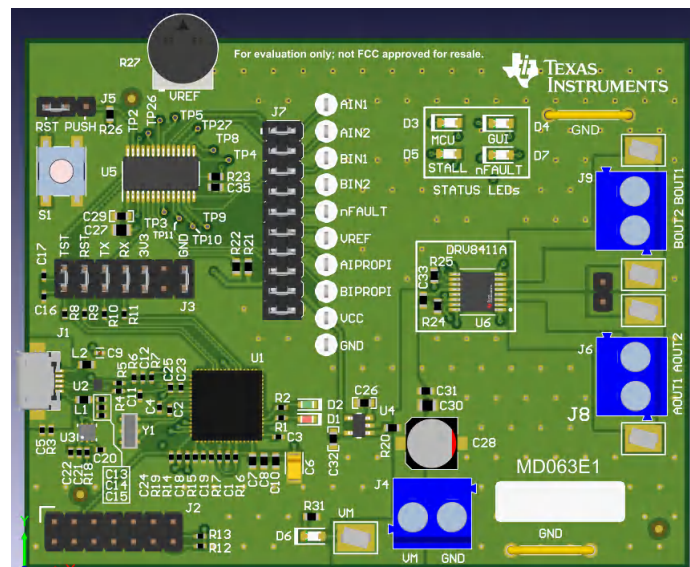


Figure 1-2. MD063 Board for DRV8411AEVM

1.2 Features

The DRV841xEVM comes with various features for facilitating the validation of the DRV841x family of low voltage stepper motor drivers. Below is a list of the features included in this family of EVM:

- 3.3 V LDO for supplying power to digital circuitry.

Note

The DRV841x family of devices can operate as low as 1.65 V. If the power supply is less than 3.3 V, an external 3.3 V supply is required.

- Onboard eZ-FET lite circuit for MSP debugging. The eZ-FET lite allows for programming the MCU with a custom code via USB. No external hardware tool is required for programming. This eZ-FET lite circuit also facilitates updating of firmware when a new version of the firmware is available.
- Graphical User Interface (GUI) to control the driver input signals (nSLEEP, AIN1, IN2, BIN1, BIN2). More information regarding the GUI in [Section 5](#).
- Main signal header with tests points and shunts to easily remove the signal connections between the driver IC and the MCU. User can connect external MCU to control the motor driver on the EVM. More details are shown in [Section 2](#).
- Hardware is design so that the driver can be set to dual h-bridge and parallel h-bridge control by header jumper settings and GUI. The different control modes are explained in [Section 5](#)
- Test points for most important signals such as the control inputs, driver output, power supplies, LDO output, and so forth. for ease of measurement.

2 Connection Descriptions

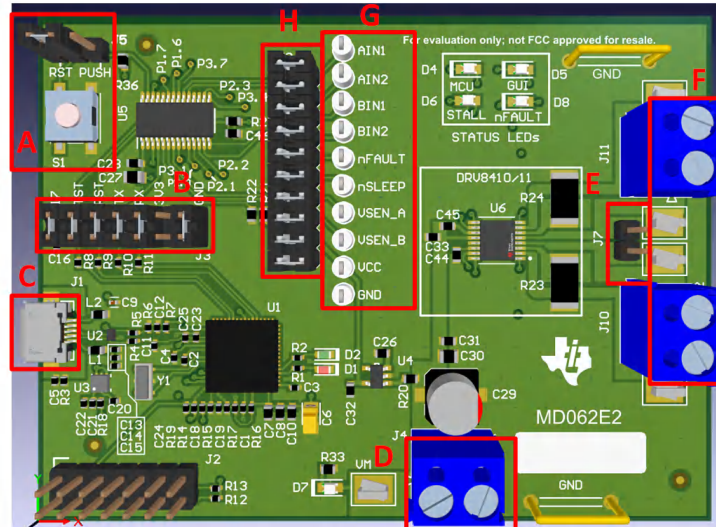


Figure 2-1. DRV8410EVM and DRV8411EVM Overview of Connectors and Test Points

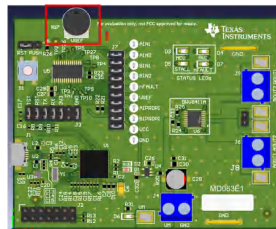


Figure 2-2. DRV8411AEVM Overview

Table 2-1. Test Points and Jumpers

Name	Description
A	<ul style="list-style-type: none"> J5: Sets action of push button (S1) <ul style="list-style-type: none"> RST: MCU reset PUSH: Debug and testing purpose (NOT used in this EVM) S1: Push button
B	<ul style="list-style-type: none"> J3: Connector between eZ-FET-Lite and MSP430G2553 (U5)
C	<ul style="list-style-type: none"> J1: Micro USB 2.0 connector
D	<ul style="list-style-type: none"> J4: Main power connector
E	<ul style="list-style-type: none"> J7: Connects AISEN and BIEN when operating in parallel h-bridge mode.
F	<ul style="list-style-type: none"> J10: AOUT1 and AOUT2 connector J11: BOUT1 and BOUT2 connector
G	<ul style="list-style-type: none"> Test points for control input signals and other feedback signals going to the MCU (U5).
H	<ul style="list-style-type: none"> J9: Header connecting signals from DRV and other feedback signals to the MCU. Remove the shunts in order to use an external signal or MCU.

Table 2-1. Test Points and Jumpers (continued)

Name	Description
I	<ul style="list-style-type: none"><li data-bbox="820 212 1279 233">• R27: Potentiometer for setting VREF voltage.


3 EVM Setup Guide

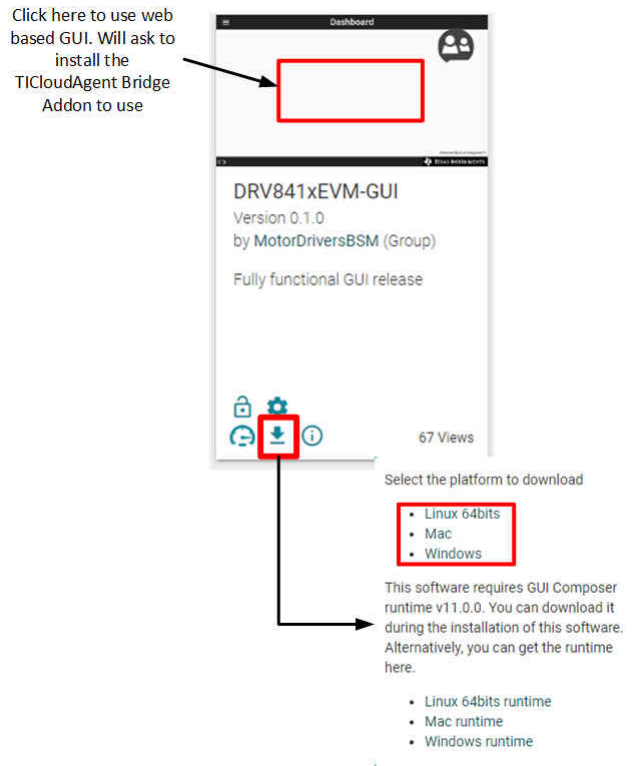
This section will provide a step-by-step guide for configuring and setting up the hardware before use. The DRV8410EVM and DRV8411EVM share the same board design but the DRV8411AEVM is slightly different than the other two boards. The hardware setup is the similar for the three boards unless it is specifically noted that it only applies to one board (the EVM name will be in paranthesis at the end of the step to note that the step only applies to that EVM).

3.1 Hardware Setup

1. The various headers have been populated with shunts on the default locations which are shown in [Figure 1-1](#) and [Figure 1-2](#). Confirm that the shunts are placed in the same location.
2. Connect micro USB included in the EVM kit to the EVM micro USB connector (J1).
3. Connect the other end of the UCB cable to the PC where the GUI has been installed. See [Section 3.2](#) for GUI installation instructions.
4. Connect power supply to J4. The max power supply is limited by the max voltage specification of the device which is 12 V. Connect positive terminal to connector labeled "VM" and negative terminal to connector labeled "GND". Alternatively, the power supply can be connected with clip wires to the test points labeled "VM" and "GND" located on either side of the screw connector (J4).
5. At this point, the board is alive with D1 ON and D4 (MCU) blinking. **If D4 LED is OFF or not blinking, press on the RESET button S1 to manually reset the MCU.**
6. Set the potentiometer R27 to set desired VREF voltage. The VREF test point can be probed with voltage meter to measure the VREF voltage. The VREF voltage sets the current regulation limit. Read the DRV8411A data sheet for the current regulation (ITRIP) limit equation. If no current regulation is needed, set the VREF to 3.3 V. (This step only applies for the DRV8411AEVM).
7. Now the EVM is ready to be connected to the GUI. Follow the steps in next section for instructions on GUI installation.

3.2 GUI Installation

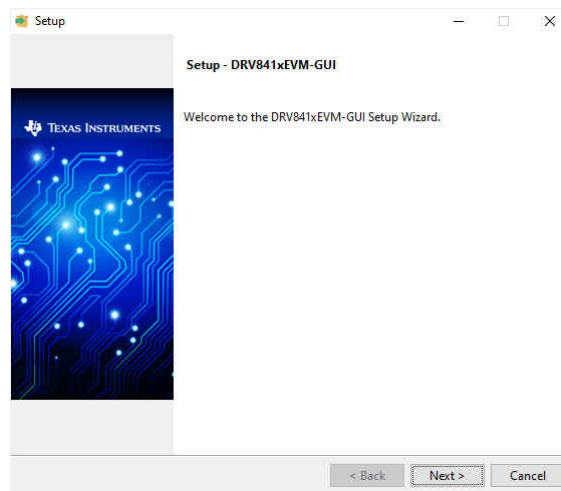
1. Go to dev.ti.com/gallery and search for **DRV841xEVM-GUI** to use the web based GUI or to download the GUI and install locally to the computer. Note that to use the web based GUI, the TICloudAgent Bridge browser extension is required to be installed. Special permissions from your company's firewall may be required to install this addon. For better performance, use a Chrome based browser.
2. After clicking the link above, there is the option of using the GUI on the web browser or download the installer to run the GUI locally. Clicking the empty space above the title "DRV841xEVM-GUI" will open the GUI on a different tab. Hovering the mouse over the  icon will display a pop-up window to download the installer for the PC platform (Linux, Mac, or Windows). Optionally, the GUI composer runtime can be downloaded here or during the installation of the GUI. The preferred method is to install the GUI composer runtime during the GUI installation.



a.

Figure 3-1. GUI on dev.ti.com

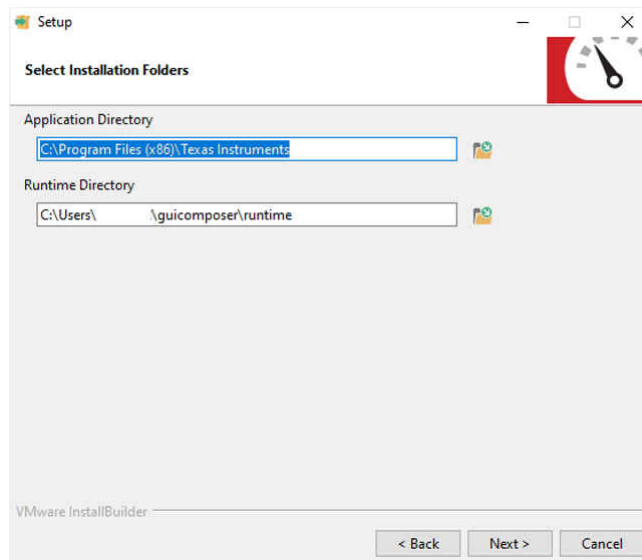
- Open, extract the ZIP folder, and double click on the .exe to run the installer. The following window will appear. Click on "Next" to continue.



a.

Figure 3-2. GUI Installer Start Window

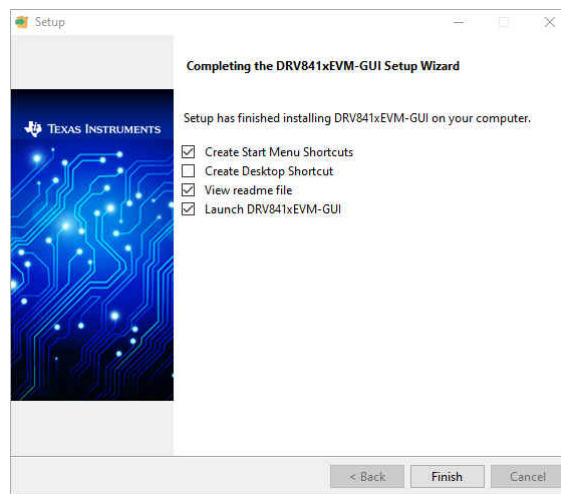
- Read and accept the license agreement. Click "Next".
- Keep the Application and Runtime directories to default locations. Click "Next" to install the GUI.



a.

Figure 3-3. Default GUI and Runtime Install Location

6. After successful installing the GUI. The following window will appear. Check the "Create Desktop Shortcut" box to save a shortcut to the desktop. Otherwise, the GUI executable is found on the application directory from step 5.



a.

Figure 3-4. Window After Successful Installation

7. Now the GUI has been successfully installed. [Section 4](#) provides an overview of the GUI and how to use it.

4 GUI Overview

The DRV841xEVM-GUI is design to support the DRV8410EVM, DRV8411EVM, and DRV8411AEVM. [Figure 4-1](#) shows the home page. The GUI variant can either be DRV8410, DRV8411, or DRV8411A depending on the EVM connected. The EVM will not connect to the GUI if the wrong variant is selected.

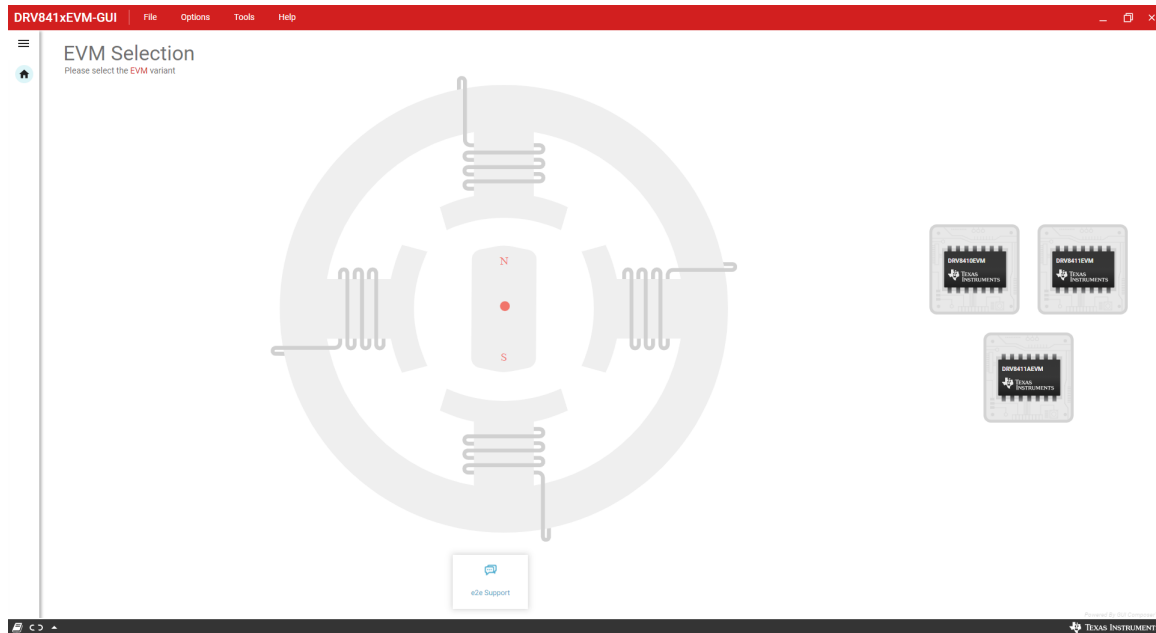


Figure 4-1. DRV841xEVM GUI Home Page

To update the EVM firmware, click on "Program Device" under the "File" tab as shown in [Figure 4-2](#). **Before using the EVM, please update the firmware since newer versions of the GUI may not be compatible with older EVM firmware versions.**

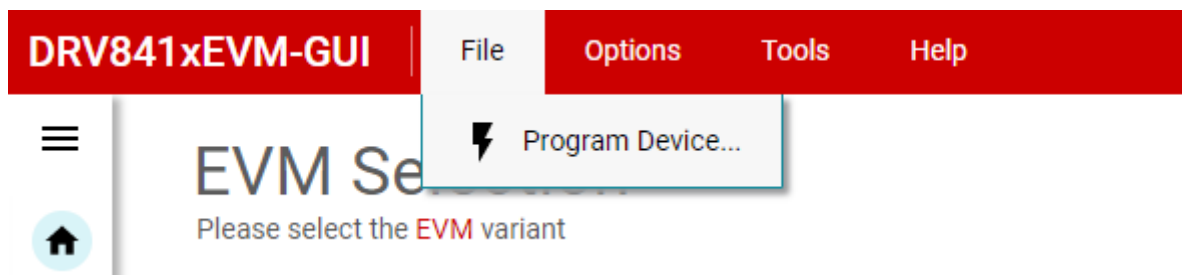


Figure 4-2. Program Device

[Figure 4-3](#) shows the control page of the DRV8410 and DRV8411 GUI variants. The section labeled "A" displays the Firmware Version. The firmware version is a non-zero value that corresponds to the connected EVM version. Section "B" enables/disables the motor driver. Certain widgets in the GUI are not available when motor is disabled for safety purposes. Section "C" is for selecting the motor type connected to the motor output.

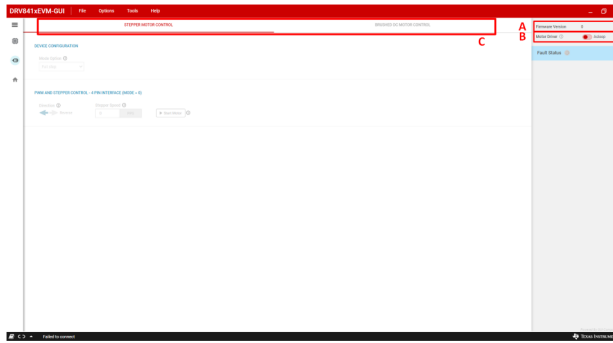


Figure 4-3. DRV8410 and DRV8411 Motor Control Page

5 Operating Modes

5.1 Stepper Motor

The DRV841x family of devices can drive a stepper motor or two brushed DC motors. Choosing the "Stepper Motor Control" tab in the GUI displays the stepper control GUI page. [Figure 5-1](#) displays the stepper control page. Hovering over the "!" icons display information about each widget. The "Mode Option" selects between full step and half-step. Choosing half step will display another widget titled "Decay Mode" which sets the decay mode. The "Direction" arrows sets the motor spin direction. The "Stepper Speed" sets the motor speed in pps (pulses per second). Finally, the "Start Motor" button will spin the motor.

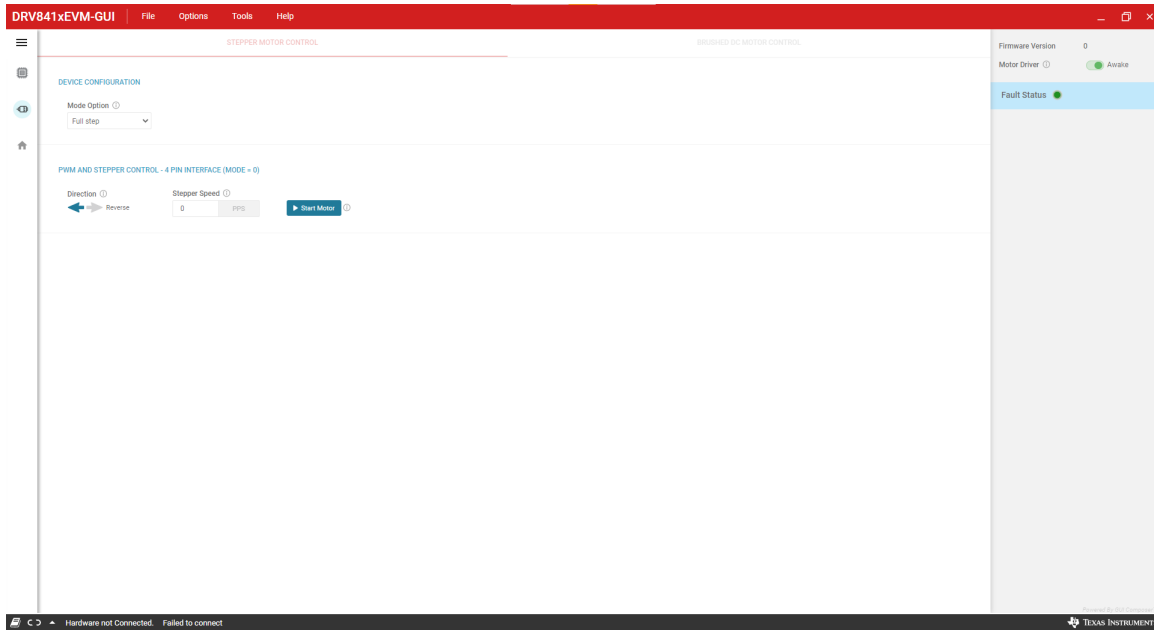


Figure 5-1. Stepper Motor Control Page

5.2 Brushed DC Motor

The brushed DC control page allows to configure between parallel h-bridge (AIN1-BIN1 duty cycle controlled by AIN1 slider and AIN2-BIN2 controlled by AIN2 slider) and dual h-bridge (each control input signal controller by an individual slider). The PWM switching frequency can be set between 20kHz, 10kHz, 5kHz, and 2.5kHz. The user has the ability to use external custom PWM signals for AIN1, AIN2, BIN1, and BIN2 by connecting external signal to the respective test points and removing the appropriate shunt on J9 header.

Note

In parallel h-bridge mode, ensure that J7 header is shorted to connect the SENSE resistor of both h-bridges

STANDARD TERMS FOR EVALUATION MODULES

1. *Delivery:* TI delivers TI evaluation boards, kits, or modules, including any accompanying demonstration software, components, and/or documentation which may be provided together or separately (collectively, an "EVM" or "EVMs") to the User ("User") in accordance with the terms set forth herein. User's acceptance of the EVM is expressly subject to the following terms.
 - 1.1 EVMs are intended solely for product or software developers for use in a research and development setting to facilitate feasibility evaluation, experimentation, or scientific analysis of TI semiconductor products. EVMs have no direct function and are not finished products. EVMs shall not be directly or indirectly assembled as a part or subassembly in any finished product. For clarification, any software or software tools provided with the EVM ("Software") shall not be subject to the terms and conditions set forth herein but rather shall be subject to the applicable terms that accompany such Software
 - 1.2 EVMs are not intended for consumer or household use. EVMs may not be sold, sublicensed, leased, rented, loaned, assigned, or otherwise distributed for commercial purposes by Users, in whole or in part, or used in any finished product or production system.
2. *Limited Warranty and Related Remedies/Disclaimers:*
 - 2.1 These terms do not apply to Software. The warranty, if any, for Software is covered in the applicable Software License Agreement.
 - 2.2 TI warrants that the TI EVM will conform to TI's published specifications for ninety (90) days after the date TI delivers such EVM to User. Notwithstanding the foregoing, TI shall not be liable for a nonconforming EVM if (a) the nonconformity was caused by neglect, misuse or mistreatment by an entity other than TI, including improper installation or testing, or for any EVMs that have been altered or modified in any way by an entity other than TI, (b) the nonconformity resulted from User's design, specifications or instructions for such EVMs or improper system design, or (c) User has not paid on time. Testing and other quality control techniques are used to the extent TI deems necessary. TI does not test all parameters of each EVM. User's claims against TI under this Section 2 are void if User fails to notify TI of any apparent defects in the EVMs within ten (10) business days after delivery, or of any hidden defects with ten (10) business days after the defect has been detected.
 - 2.3 TI's sole liability shall be at its option to repair or replace EVMs that fail to conform to the warranty set forth above, or credit User's account for such EVM. TI's liability under this warranty shall be limited to EVMs that are returned during the warranty period to the address designated by TI and that are determined by TI not to conform to such warranty. If TI elects to repair or replace such EVM, TI shall have a reasonable time to repair such EVM or provide replacements. Repaired EVMs shall be warranted for the remainder of the original warranty period. Replaced EVMs shall be warranted for a new full ninety (90) day warranty period.

WARNING

Evaluation Kits are intended solely for use by technically qualified, professional electronics experts who are familiar with the dangers and application risks associated with handling electrical mechanical components, systems, and subsystems.

User shall operate the Evaluation Kit within TI's recommended guidelines and any applicable legal or environmental requirements as well as reasonable and customary safeguards. Failure to set up and/or operate the Evaluation Kit within TI's recommended guidelines may result in personal injury or death or property damage. Proper set up entails following TI's instructions for electrical ratings of interface circuits such as input, output and electrical loads.

NOTE:

EXPOSURE TO ELECTROSTATIC DISCHARGE (ESD) MAY CAUSE DEGRADATION OR FAILURE OF THE EVALUATION KIT; TI RECOMMENDS STORAGE OF THE EVALUATION KIT IN A PROTECTIVE ESD BAG.

3 Regulatory Notices:

3.1 United States

3.1.1 Notice applicable to EVMs not FCC-Approved:

FCC NOTICE: This kit is designed to allow product developers to evaluate electronic components, circuitry, or software associated with the kit to determine whether to incorporate such items in a finished product and software developers to write software applications for use with the end product. This kit is not a finished product and when assembled may not be resold or otherwise marketed unless all required FCC equipment authorizations are first obtained. Operation is subject to the condition that this product not cause harmful interference to licensed radio stations and that this product accept harmful interference. Unless the assembled kit is designed to operate under part 15, part 18 or part 95 of this chapter, the operator of the kit must operate under the authority of an FCC license holder or must secure an experimental authorization under part 5 of this chapter.

3.1.2 For EVMs annotated as FCC – FEDERAL COMMUNICATIONS COMMISSION Part 15 Compliant:

CAUTION

This device complies with part 15 of the FCC Rules. Operation is subject to the following two conditions: (1) This device may not cause harmful interference, and (2) this device must accept any interference received, including interference that may cause undesired operation.

Changes or modifications not expressly approved by the party responsible for compliance could void the user's authority to operate the equipment.

FCC Interference Statement for Class A EVM devices

NOTE: This equipment has been tested and found to comply with the limits for a Class A digital device, pursuant to part 15 of the FCC Rules. These limits are designed to provide reasonable protection against harmful interference when the equipment is operated in a commercial environment. This equipment generates, uses, and can radiate radio frequency energy and, if not installed and used in accordance with the instruction manual, may cause harmful interference to radio communications. Operation of this equipment in a residential area is likely to cause harmful interference in which case the user will be required to correct the interference at his own expense.

FCC Interference Statement for Class B EVM devices

NOTE: This equipment has been tested and found to comply with the limits for a Class B digital device, pursuant to part 15 of the FCC Rules. These limits are designed to provide reasonable protection against harmful interference in a residential installation. This equipment generates, uses and can radiate radio frequency energy and, if not installed and used in accordance with the instructions, may cause harmful interference to radio communications. However, there is no guarantee that interference will not occur in a particular installation. If this equipment does cause harmful interference to radio or television reception, which can be determined by turning the equipment off and on, the user is encouraged to try to correct the interference by one or more of the following measures:

- Reorient or relocate the receiving antenna.
- Increase the separation between the equipment and receiver.
- Connect the equipment into an outlet on a circuit different from that to which the receiver is connected.
- Consult the dealer or an experienced radio/TV technician for help.

3.2 Canada

3.2.1 For EVMs issued with an Industry Canada Certificate of Conformance to RSS-210 or RSS-247

Concerning EVMs Including Radio Transmitters:

This device complies with Industry Canada license-exempt RSSs. Operation is subject to the following two conditions:

(1) this device may not cause interference, and (2) this device must accept any interference, including interference that may cause undesired operation of the device.

Concernant les EVMs avec appareils radio:

Le présent appareil est conforme aux CNR d'Industrie Canada applicables aux appareils radio exempts de licence. L'exploitation est autorisée aux deux conditions suivantes: (1) l'appareil ne doit pas produire de brouillage, et (2) l'utilisateur de l'appareil doit accepter tout brouillage radioélectrique subi, même si le brouillage est susceptible d'en compromettre le fonctionnement.

Concerning EVMs Including Detachable Antennas:

Under Industry Canada regulations, this radio transmitter may only operate using an antenna of a type and maximum (or lesser) gain approved for the transmitter by Industry Canada. To reduce potential radio interference to other users, the antenna type and its gain should be so chosen that the equivalent isotropically radiated power (e.i.r.p.) is not more than that necessary for successful communication. This radio transmitter has been approved by Industry Canada to operate with the antenna types listed in the user guide with the maximum permissible gain and required antenna impedance for each antenna type indicated. Antenna types not included in this list, having a gain greater than the maximum gain indicated for that type, are strictly prohibited for use with this device.

Concernant les EVMs avec antennes détachables

Conformément à la réglementation d'Industrie Canada, le présent émetteur radio peut fonctionner avec une antenne d'un type et d'un gain maximal (ou inférieur) approuvé pour l'émetteur par Industrie Canada. Dans le but de réduire les risques de brouillage radioélectrique à l'intention des autres utilisateurs, il faut choisir le type d'antenne et son gain de sorte que la puissance isotrope rayonnée équivalente (p.i.r.e.) ne dépasse pas l'intensité nécessaire à l'établissement d'une communication satisfaisante. Le présent émetteur radio a été approuvé par Industrie Canada pour fonctionner avec les types d'antenne énumérés dans le manuel d'usage et ayant un gain admissible maximal et l'impédance requise pour chaque type d'antenne. Les types d'antenne non inclus dans cette liste, ou dont le gain est supérieur au gain maximal indiqué, sont strictement interdits pour l'exploitation de l'émetteur.

3.3 Japan

3.3.1 *Notice for EVMs delivered in Japan:* Please see http://www.tij.co.jp/lstds/ti_ja/general/eStore/notice_01.page 日本国内に輸入される評価用キット、ボードについては、次のところをご覧ください。
http://www.tij.co.jp/lstds/ti_ja/general/eStore/notice_01.page

3.3.2 *Notice for Users of EVMs Considered "Radio Frequency Products" in Japan:* EVMs entering Japan may not be certified by TI as conforming to Technical Regulations of Radio Law of Japan.

If User uses EVMs in Japan, not certified to Technical Regulations of Radio Law of Japan, User is required to follow the instructions set forth by Radio Law of Japan, which includes, but is not limited to, the instructions below with respect to EVMs (which for the avoidance of doubt are stated strictly for convenience and should be verified by User):

1. Use EVMs in a shielded room or any other test facility as defined in the notification #173 issued by Ministry of Internal Affairs and Communications on March 28, 2006, based on Sub-section 1.1 of Article 6 of the Ministry's Rule for Enforcement of Radio Law of Japan,
2. Use EVMs only after User obtains the license of Test Radio Station as provided in Radio Law of Japan with respect to EVMs, or
3. Use of EVMs only after User obtains the Technical Regulations Conformity Certification as provided in Radio Law of Japan with respect to EVMs. Also, do not transfer EVMs, unless User gives the same notice above to the transferee. Please note that if User does not follow the instructions above, User will be subject to penalties of Radio Law of Japan.

【無線電波を送信する製品の開発キットをお使いになる際の注意事項】 開発キットの中には技術基準適合証明を受けていないものがあります。技術適合証明を受けていないものご使用に際しては、電波法遵守のため、以下のいずれかの措置を取っていただく必要がありますのでご注意ください。

1. 電波法施行規則第6条第1項第1号に基づく平成18年3月28日総務省告示第173号で定められた電波暗室等の試験設備でご使用いただく。
2. 実験局の免許を取得後ご使用いただく。
3. 技術基準適合証明を取得後ご使用いただく。

なお、本製品は、上記の「ご使用にあたっての注意」を譲渡先、移転先に通知しない限り、譲渡、移転できないものとします。

上記を遵守頂けない場合は、電波法の罰則が適用される可能性があることをご留意ください。日本テキサス・インスツルメンツ株式会社
東京都新宿区西新宿 6 丁目 2 4 番 1 号
西新宿三井ビル

3.3.3 *Notice for EVMs for Power Line Communication:* Please see http://www.tij.co.jp/lstds/ti_ja/general/eStore/notice_02.page
電力線搬送波通信についての開発キットをお使いになる際の注意事項については、次のところをご覧ください。http://www.tij.co.jp/lstds/ti_ja/general/eStore/notice_02.page

3.4 European Union

3.4.1 *For EVMs subject to EU Directive 2014/30/EU (Electromagnetic Compatibility Directive):*

This is a class A product intended for use in environments other than domestic environments that are connected to a low-voltage power-supply network that supplies buildings used for domestic purposes. In a domestic environment this product may cause radio interference in which case the user may be required to take adequate measures.

-
4. *EVM Use Restrictions and Warnings:*
 - 4.1 EVMS ARE NOT FOR USE IN FUNCTIONAL SAFETY AND/OR SAFETY CRITICAL EVALUATIONS, INCLUDING BUT NOT LIMITED TO EVALUATIONS OF LIFE SUPPORT APPLICATIONS.
 - 4.2 User must read and apply the user guide and other available documentation provided by TI regarding the EVM prior to handling or using the EVM, including without limitation any warning or restriction notices. The notices contain important safety information related to, for example, temperatures and voltages.
 - 4.3 *Safety-Related Warnings and Restrictions:*
 - 4.3.1 User shall operate the EVM within TI's recommended specifications and environmental considerations stated in the user guide, other available documentation provided by TI, and any other applicable requirements and employ reasonable and customary safeguards. Exceeding the specified performance ratings and specifications (including but not limited to input and output voltage, current, power, and environmental ranges) for the EVM may cause personal injury or death, or property damage. If there are questions concerning performance ratings and specifications, User should contact a TI field representative prior to connecting interface electronics including input power and intended loads. Any loads applied outside of the specified output range may also result in unintended and/or inaccurate operation and/or possible permanent damage to the EVM and/or interface electronics. Please consult the EVM user guide prior to connecting any load to the EVM output. If there is uncertainty as to the load specification, please contact a TI field representative. During normal operation, even with the inputs and outputs kept within the specified allowable ranges, some circuit components may have elevated case temperatures. These components include but are not limited to linear regulators, switching transistors, pass transistors, current sense resistors, and heat sinks, which can be identified using the information in the associated documentation. When working with the EVM, please be aware that the EVM may become very warm.
 - 4.3.2 EVMs are intended solely for use by technically qualified, professional electronics experts who are familiar with the dangers and application risks associated with handling electrical mechanical components, systems, and subsystems. User assumes all responsibility and liability for proper and safe handling and use of the EVM by User or its employees, affiliates, contractors or designees. User assumes all responsibility and liability to ensure that any interfaces (electronic and/or mechanical) between the EVM and any human body are designed with suitable isolation and means to safely limit accessible leakage currents to minimize the risk of electrical shock hazard. User assumes all responsibility and liability for any improper or unsafe handling or use of the EVM by User or its employees, affiliates, contractors or designees.
 - 4.4 User assumes all responsibility and liability to determine whether the EVM is subject to any applicable international, federal, state, or local laws and regulations related to User's handling and use of the EVM and, if applicable, User assumes all responsibility and liability for compliance in all respects with such laws and regulations. User assumes all responsibility and liability for proper disposal and recycling of the EVM consistent with all applicable international, federal, state, and local requirements.
 5. *Accuracy of Information:* To the extent TI provides information on the availability and function of EVMs, TI attempts to be as accurate as possible. However, TI does not warrant the accuracy of EVM descriptions, EVM availability or other information on its websites as accurate, complete, reliable, current, or error-free.
 6. *Disclaimers:*
 - 6.1 EXCEPT AS SET FORTH ABOVE, EVMS AND ANY MATERIALS PROVIDED WITH THE EVM (INCLUDING, BUT NOT LIMITED TO, REFERENCE DESIGNS AND THE DESIGN OF THE EVM ITSELF) ARE PROVIDED "AS IS" AND "WITH ALL FAULTS." TI DISCLAIMS ALL OTHER WARRANTIES, EXPRESS OR IMPLIED, REGARDING SUCH ITEMS, INCLUDING BUT NOT LIMITED TO ANY EPIDEMIC FAILURE WARRANTY OR IMPLIED WARRANTIES OF MERCHANTABILITY OR FITNESS FOR A PARTICULAR PURPOSE OR NON-INFRINGEMENT OF ANY THIRD PARTY PATENTS, COPYRIGHTS, TRADE SECRETS OR OTHER INTELLECTUAL PROPERTY RIGHTS.
 - 6.2 EXCEPT FOR THE LIMITED RIGHT TO USE THE EVM SET FORTH HEREIN, NOTHING IN THESE TERMS SHALL BE CONSTRUED AS GRANTING OR CONFERRING ANY RIGHTS BY LICENSE, PATENT, OR ANY OTHER INDUSTRIAL OR INTELLECTUAL PROPERTY RIGHT OF TI, ITS SUPPLIERS/LICENSORS OR ANY OTHER THIRD PARTY, TO USE THE EVM IN ANY FINISHED END-USER OR READY-TO-USE FINAL PRODUCT, OR FOR ANY INVENTION, DISCOVERY OR IMPROVEMENT, REGARDLESS OF WHEN MADE, CONCEIVED OR ACQUIRED.
 7. *USER'S INDEMNITY OBLIGATIONS AND REPRESENTATIONS.* USER WILL DEFEND, INDEMNIFY AND HOLD TI, ITS LICENSORS AND THEIR REPRESENTATIVES HARMLESS FROM AND AGAINST ANY AND ALL CLAIMS, DAMAGES, LOSSES, EXPENSES, COSTS AND LIABILITIES (COLLECTIVELY, "CLAIMS") ARISING OUT OF OR IN CONNECTION WITH ANY HANDLING OR USE OF THE EVM THAT IS NOT IN ACCORDANCE WITH THESE TERMS. THIS OBLIGATION SHALL APPLY WHETHER CLAIMS ARISE UNDER STATUTE, REGULATION, OR THE LAW OF TORT, CONTRACT OR ANY OTHER LEGAL THEORY, AND EVEN IF THE EVM FAILS TO PERFORM AS DESCRIBED OR EXPECTED.
-

8. *Limitations on Damages and Liability:*

8.1 *General Limitations.* IN NO EVENT SHALL TI BE LIABLE FOR ANY SPECIAL, COLLATERAL, INDIRECT, PUNITIVE, INCIDENTAL, CONSEQUENTIAL, OR EXEMPLARY DAMAGES IN CONNECTION WITH OR ARISING OUT OF THESE TERMS OR THE USE OF THE EVMS , REGARDLESS OF WHETHER TI HAS BEEN ADVISED OF THE POSSIBILITY OF SUCH DAMAGES. EXCLUDED DAMAGES INCLUDE, BUT ARE NOT LIMITED TO, COST OF REMOVAL OR REINSTALLATION, ANCILLARY COSTS TO THE PROCUREMENT OF SUBSTITUTE GOODS OR SERVICES, RETESTING, OUTSIDE COMPUTER TIME, LABOR COSTS, LOSS OF GOODWILL, LOSS OF PROFITS, LOSS OF SAVINGS, LOSS OF USE, LOSS OF DATA, OR BUSINESS INTERRUPTION. NO CLAIM, SUIT OR ACTION SHALL BE BROUGHT AGAINST TI MORE THAN TWELVE (12) MONTHS AFTER THE EVENT THAT GAVE RISE TO THE CAUSE OF ACTION HAS OCCURRED.

8.2 *Specific Limitations.* IN NO EVENT SHALL TI'S AGGREGATE LIABILITY FROM ANY USE OF AN EVM PROVIDED HEREUNDER, INCLUDING FROM ANY WARRANTY, INDEMNITY OR OTHER OBLIGATION ARISING OUT OF OR IN CONNECTION WITH THESE TERMS, , EXCEED THE TOTAL AMOUNT PAID TO TI BY USER FOR THE PARTICULAR EVM(S) AT ISSUE DURING THE PRIOR TWELVE (12) MONTHS WITH RESPECT TO WHICH LOSSES OR DAMAGES ARE CLAIMED. THE EXISTENCE OF MORE THAN ONE CLAIM SHALL NOT ENLARGE OR EXTEND THIS LIMIT.

9. *Return Policy.* Except as otherwise provided, TI does not offer any refunds, returns, or exchanges. Furthermore, no return of EVM(s) will be accepted if the package has been opened and no return of the EVM(s) will be accepted if they are damaged or otherwise not in a resalable condition. If User feels it has been incorrectly charged for the EVM(s) it ordered or that delivery violates the applicable order, User should contact TI. All refunds will be made in full within thirty (30) working days from the return of the components(s), excluding any postage or packaging costs.

10. *Governing Law:* These terms and conditions shall be governed by and interpreted in accordance with the laws of the State of Texas, without reference to conflict-of-laws principles. User agrees that non-exclusive jurisdiction for any dispute arising out of or relating to these terms and conditions lies within courts located in the State of Texas and consents to venue in Dallas County, Texas. Notwithstanding the foregoing, any judgment may be enforced in any United States or foreign court, and TI may seek injunctive relief in any United States or foreign court.

Mailing Address: Texas Instruments, Post Office Box 655303, Dallas, Texas 75265
Copyright © 2019, Texas Instruments Incorporated

IMPORTANT NOTICE AND DISCLAIMER

TI PROVIDES TECHNICAL AND RELIABILITY DATA (INCLUDING DATA SHEETS), DESIGN RESOURCES (INCLUDING REFERENCE DESIGNS), APPLICATION OR OTHER DESIGN ADVICE, WEB TOOLS, SAFETY INFORMATION, AND OTHER RESOURCES "AS IS" AND WITH ALL FAULTS, AND DISCLAIMS ALL WARRANTIES, EXPRESS AND IMPLIED, INCLUDING WITHOUT LIMITATION ANY IMPLIED WARRANTIES OF MERCHANTABILITY, FITNESS FOR A PARTICULAR PURPOSE OR NON-INFRINGEMENT OF THIRD PARTY INTELLECTUAL PROPERTY RIGHTS.

These resources are intended for skilled developers designing with TI products. You are solely responsible for (1) selecting the appropriate TI products for your application, (2) designing, validating and testing your application, and (3) ensuring your application meets applicable standards, and any other safety, security, regulatory or other requirements.

These resources are subject to change without notice. TI grants you permission to use these resources only for development of an application that uses the TI products described in the resource. Other reproduction and display of these resources is prohibited. No license is granted to any other TI intellectual property right or to any third party intellectual property right. TI disclaims responsibility for, and you will fully indemnify TI and its representatives against, any claims, damages, costs, losses, and liabilities arising out of your use of these resources.

TI's products are provided subject to [TI's Terms of Sale](#) or other applicable terms available either on ti.com or provided in conjunction with such TI products. TI's provision of these resources does not expand or otherwise alter TI's applicable warranties or warranty disclaimers for TI products.

TI objects to and rejects any additional or different terms you may have proposed.

Mailing Address: Texas Instruments, Post Office Box 655303, Dallas, Texas 75265
Copyright © 2022, Texas Instruments Incorporated