

CSD17313Q2 30-V N-Channel NexFET™ Power MOSFET

1 Features

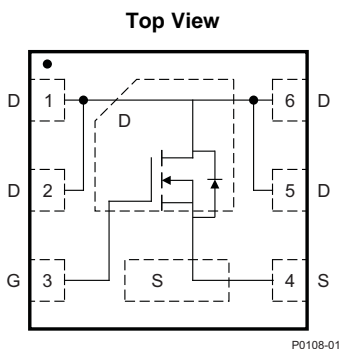
- Optimized for 5-V Gate Drive
- Ultra-Low Q_g and Q_{gd}
- Low Thermal Resistance
- Pb-Free
- RoHS Compliant
- Halogen-Free
- SON 2-mm x 2-mm Plastic Package

2 Applications

- DC-DC Converters
- Battery and Load Management Applications

3 Description

This 30-V, 24-m Ω , 2-mm x 2-mm SON NexFET™ power MOSFET is designed to minimize losses in power conversion applications and optimized for 5-V gate drive applications. The 2-mm x 2-mm SON offers excellent thermal performance for the size of the package.



Product Summary

$T_A = 25^\circ\text{C}$		TYPICAL VALUE		UNIT
V_{DS}	Drain-to-Source Voltage	30		V
Q_g	Gate Charge Total (4.5 V)	2.1		nC
Q_{gd}	Gate Charge Gate-to-Drain	0.4		nC
$R_{DS(on)}$	Drain-to-Source On Resistance	$V_{GS} = 3\text{ V}$	31	m Ω
		$V_{GS} = 4.5\text{ V}$	26	m Ω
		$V_{GS} = 8\text{ V}$	24	m Ω
$V_{GS(th)}$	Threshold Voltage	1.3		V

Ordering Information⁽¹⁾

PART NUMBER	QTY	MEDIA	PACKAGE	SHIP
CSD17313Q2	3000	13-Inch Reel	SON 2-mm x 2-mm Plastic Package	Tape and Reel
CSD17313Q2T	250	7-Inch Reel		

(1) For all available packages, see the orderable addendum at the end of the data sheet.

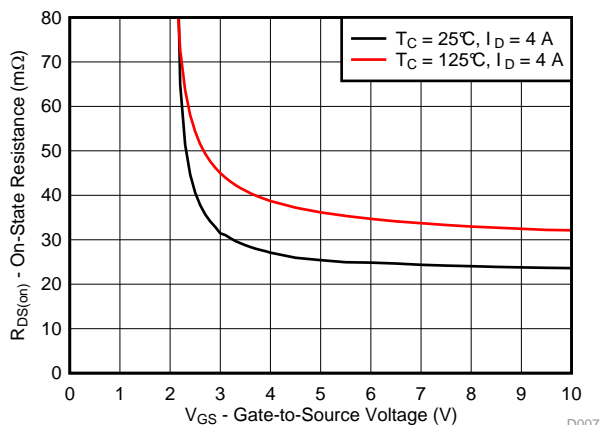
Absolute Maximum Ratings

$T_A = 25^\circ\text{C}$		VALUE	UNIT
V_{DS}	Drain-to-Source Voltage	30	V
V_{GS}	Gate-to-Source Voltage	+10 / -8	V
I_D	Continuous Drain Current (package limited)	5	A
	Continuous Drain Current (silicon limited), $T_C = 25^\circ\text{C}$	19	
	Continuous Drain Current ⁽¹⁾	7.3	
I_{DM}	Pulsed Drain Current, $T_A = 25^\circ\text{C}$ ⁽²⁾	57	A
P_D	Power Dissipation ⁽¹⁾	2.4	W
	Power Dissipation, $T_C = 25^\circ\text{C}$	17	
T_J, T_{STG}	Operating Junction and Storage Temperature Range	-55 to 150	$^\circ\text{C}$
E_{AS}	Avalanche Energy, Single Pulse, $I_D = 19\text{ A}$, $L = 0.1\text{ mH}$, $R_G = 25\Omega$	18	mJ

(1) Typical $R_{\theta JA} = 53^\circ\text{C/W}$ on a 1-inch², 2-oz. Cu pad on a 0.06-inch thick FR4 PCB.

(2) Max $R_{\theta JC} = 7.4^\circ\text{C/W}$, pulse duration $\leq 100\ \mu\text{s}$, duty cycle $\leq 1\%$.

On State Resistance vs Gate to Source Voltage



Gate Charge

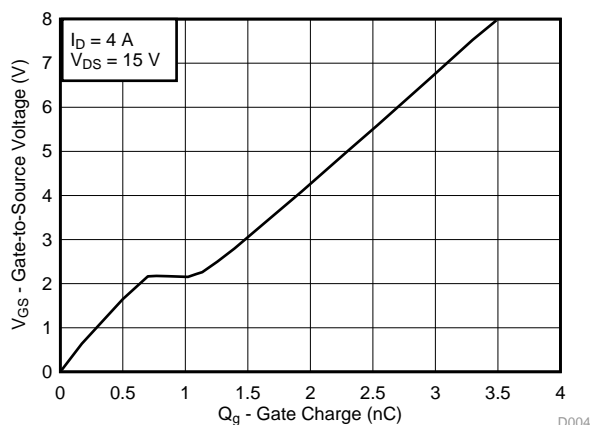


Table of Contents

1 Features 1 2 Applications 1 3 Description 1 4 Revision History 2 5 Specifications 3 5.1 Electrical Characteristics 3 5.2 Thermal Characteristics 3 5.3 Typical MOSFET Characteristics 4 6 Device and Documentation Support 7	6.1 Community Resources 7 6.2 Trademarks 7 6.3 Electrostatic Discharge Caution 7 6.4 Glossary 7 7 Mechanical, Packaging, and Orderable Information 8 7.1 Q2 Package Dimensions 8 7.2 Recommended PCB Pattern 9 7.3 Recommended Stencil Pattern 9 7.4 Q2 Tape and Reel Information 10
--	---

4 Revision History

NOTE: Page numbers for previous revisions may differ from page numbers in the current version.

Changes from Revision D (March 2013) to Revision E	Page
• Added part number to title	1
• Enhanced description	1
• Added 7-inch reel to <i>Ordering Information</i> table	1
• Updated Continuous Drain Current	1
• Updated pulsed current conditions	1
• Updated Figure 1 to show $R_{\theta JC}$ curves	4
• Added $V_{GS} = 4.5\text{ V}$ line in Figure 8	6
• Updated the SOA in Figure 10	6
• Added Community Resources	7
• Added <i>Device and Documentation</i> section.	10

Changes from Revision C (January 2013) to Revision D	Page
• Changed Figure 10 , Maximum Safe Operating Area	6

Changes from Revision B (October 2010) to Revision C	Page
• Changed the Recommended PCB Pattern.....	9
• Added the Recommended Stencil Pattern	9

Changes from Revision A (March 2010) to Revision B	Page
• Deleted the Package Marking Information section.....	10

Changes from Original (March 2010) to Revision A	Page
• Changed Q_{rr} - Reverse Recovery Charge From: 10.2 nC To: 6.4 nC.....	3

5 Specifications

5.1 Electrical Characteristics

 $T_A = 25^\circ\text{C}$ (unless otherwise noted)

PARAMETER		TEST CONDITIONS	MIN	TYP	MAX	UNIT
STATIC CHARACTERISTICS						
$B_{V_{DSS}}$	Drain-to-source voltage	$V_{GS} = 0\text{ V}, I_D = 250\ \mu\text{A}$	30			V
I_{DSS}	Drain-to-source leakage	$V_{GS} = 0\text{ V}, V_{DS} = 24\text{ V}$			1	μA
I_{GSS}	Gate-to-source leakage	$V_{DS} = 0\text{ V}, V_{GS} = +10 / -8\text{ V}$			100	nA
$V_{GS(th)}$	Gate-to-source threshold voltage	$V_{DS} = V_{GS}, I_D = 250\ \mu\text{A}$	0.9	1.3	1.8	V
$R_{DS(on)}$	Drain-to-source on resistance	$V_{GS} = 3\text{ V}, I_D = 4\text{ A}$		31	42	m Ω
		$V_{GS} = 4.5\text{ V}, I_D = 4\text{ A}$		26	32	m Ω
		$V_{GS} = 8\text{ V}, I_D = 4\text{ A}$		24	30	m Ω
g_{fs}	Transconductance	$V_{DS} = 15\text{ V}, I_D = 4\text{ A}$		16		S
DYNAMIC CHARACTERISTICS						
C_{iss}	Input capacitance	$V_{GS} = 0\text{ V}, V_{DS} = 15\text{ V},$ $f = 1\text{ MHz}$		260	340	pF
C_{oss}	Output capacitance			140	180	pF
C_{rss}	Reverse transfer capacitance			13	17	pF
R_G	Series gate resistance			1.3	2.6	Ω
Q_g	Gate charge total (4.5 V)	$V_{DS} = 15\text{ V},$ $I_D = 4\text{ A}$		2.1	2.7	nC
Q_{gd}	Gate charge – gate-to-drain			0.4		nC
Q_{gs}	Gate charge – gate-to-source			0.7		nC
$Q_{g(th)}$	Gate charge at V_{th}			0.3		nC
Q_{oss}	Output charge		$V_{DS} = 13.5\text{ V}, V_{GS} = 0\text{ V}$		3.8	
$t_{d(on)}$	Turn on delay time	$V_{DS} = 15\text{ V}, V_{GS} = 4.5\text{ V},$ $I_D = 4\text{ A}, R_G = 2\ \Omega$		2.8		ns
t_r	Rise time			3.9		ns
$t_{d(off)}$	Turn off delay time			4.2		ns
t_f	Fall time			1.3		ns
DIODE CHARACTERISTICS						
V_{SD}	Diode forward voltage	$I_{SD} = 4\text{ A}, V_{GS} = 0\text{ V}$	0.85		1	V
Q_{rr}	Reverse recovery charge	$V_{DD} = 13.5\text{ V}, I_F = 4\text{ A},$ $di/dt = 300\text{ A}/\mu\text{s}$		6.4		nC
t_{rr}	Reverse recovery time			12.9		ns

5.2 Thermal Characteristics

 $T_A = 25^\circ\text{C}$ (unless otherwise noted)

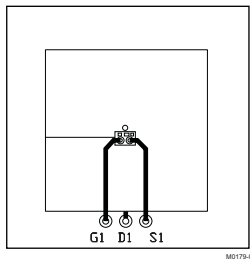
PARAMETER		MIN	TYP	MAX	UNIT
$R_{\theta JC}$	Thermal resistance junction-to-case ⁽¹⁾			7.4	$^\circ\text{C}/\text{W}$
$R_{\theta JA}$	Thermal resistance junction-to-ambient ⁽¹⁾⁽²⁾			67	$^\circ\text{C}/\text{W}$

- (1) $R_{\theta JC}$ is determined with the device mounted on a 1 inch² (6.45 cm²), 2 oz. (0.071 mm thick) Cu pad on a 1.5 inch × 1.5 inch (3.81 cm × 3.81 cm), 0.06 inch (1.52 mm) thick FR4 PCB. $R_{\theta JC}$ is specified by design, whereas $R_{\theta JA}$ is determined by the user's board design.
- (2) Device mounted on FR4 material with 1 inch² (6.45 cm²), 2 oz. (0.071 mm thick) Cu.

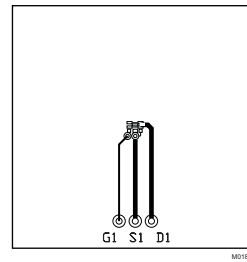
CSD17313Q2

SLPS260E – MARCH 2010 – REVISED SEPTEMBER 2015

www.ti.com



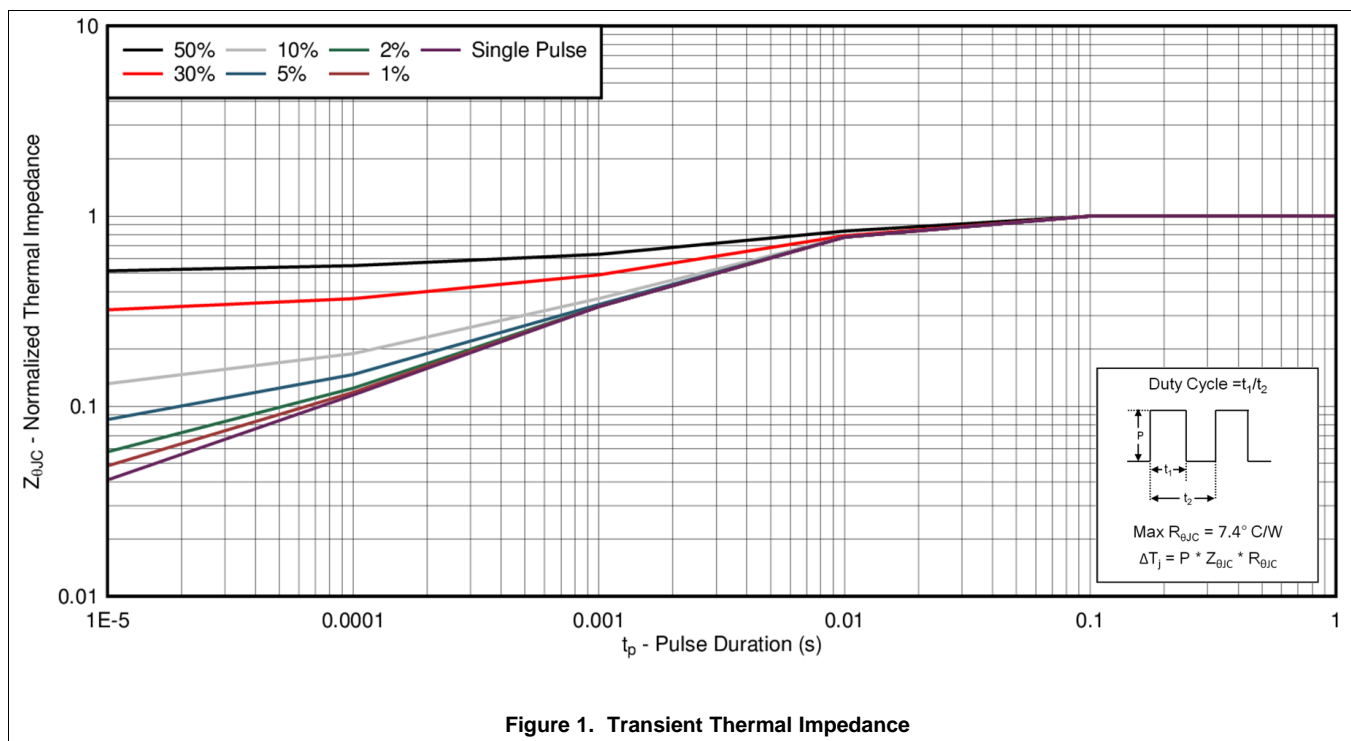
Max $R_{\theta JA} = 67^{\circ}\text{C/W}$
when mounted on 1-
inch² (6.45-cm²) of 2-
oz. (0.071-mm thick)
Cu.



Max $R_{\theta JA} = 228^{\circ}\text{C/W}$
when mounted on a
minimum pad area of
2-oz. (0.071-mm thick)
Cu.

5.3 Typical MOSFET Characteristics

$T_A = 25^{\circ}\text{C}$ (unless otherwise noted)



Typical MOSFET Characteristics (continued)

T_A = 25°C (unless otherwise noted)

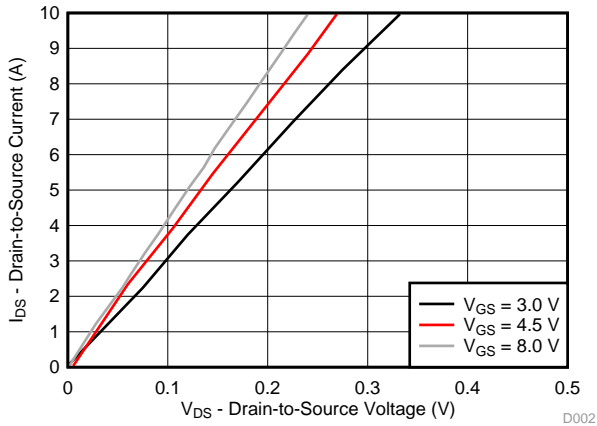


Figure 2. Saturation Characteristics

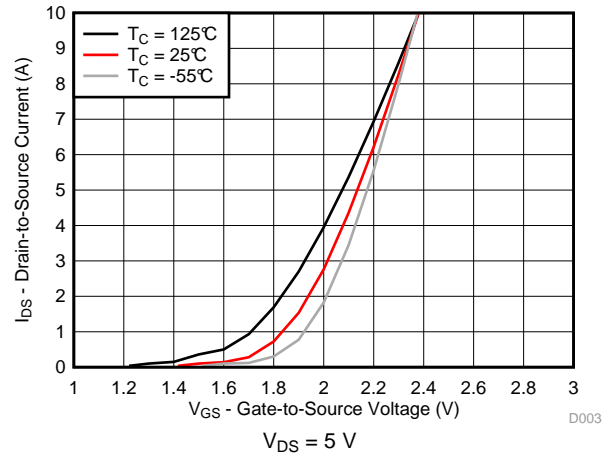


Figure 3. Transfer Characteristics

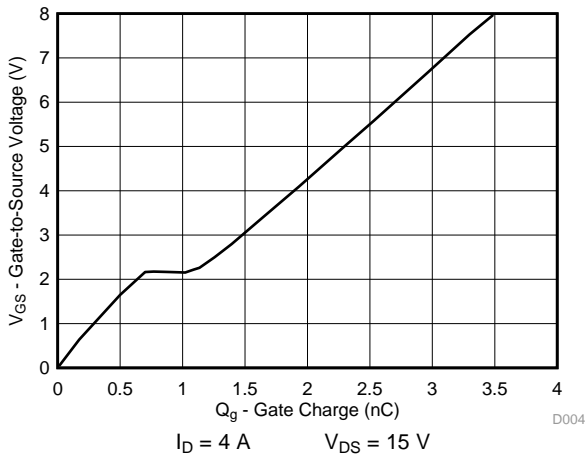


Figure 4. Gate Charge

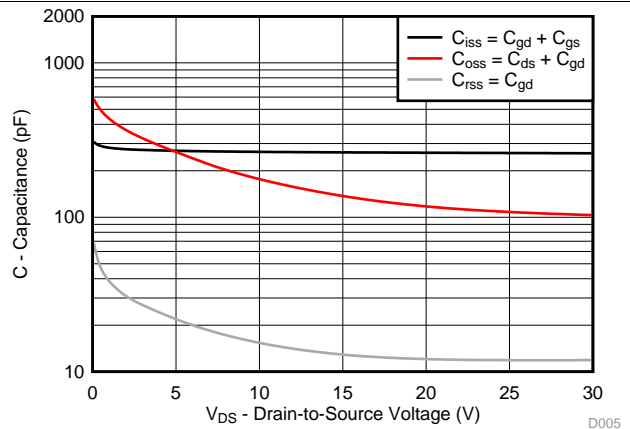


Figure 5. Capacitance

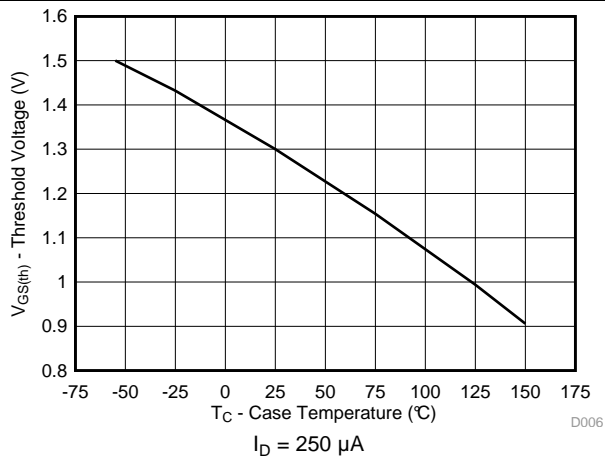


Figure 6. Threshold Voltage vs Temperature

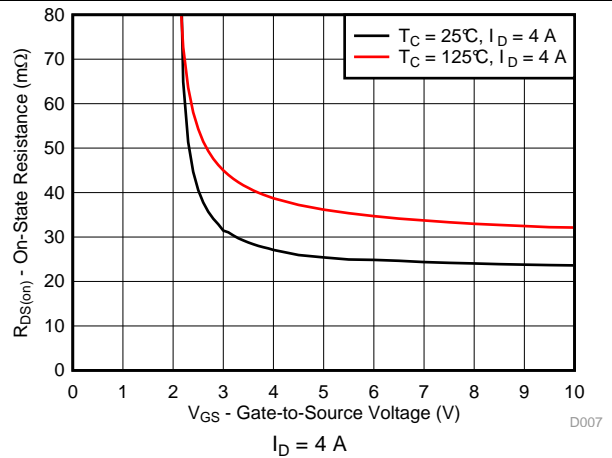


Figure 7. On-State Resistance vs Gate-to-Source Voltage

Typical MOSFET Characteristics (continued)

$T_A = 25^\circ\text{C}$ (unless otherwise noted)

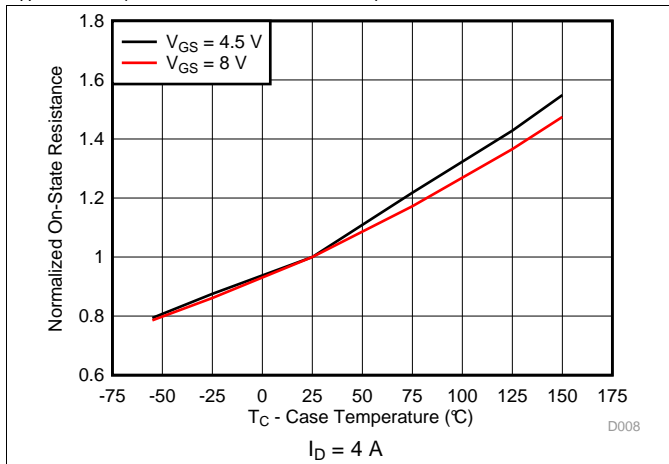


Figure 8. Normalized On-State Resistance vs Temperature

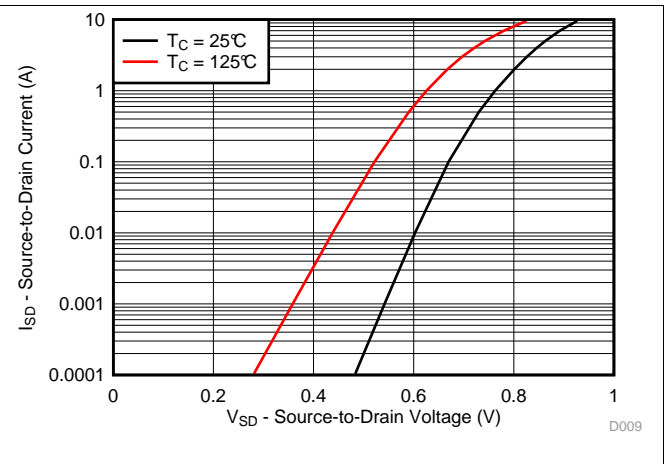


Figure 9. Typical Diode Forward Voltage

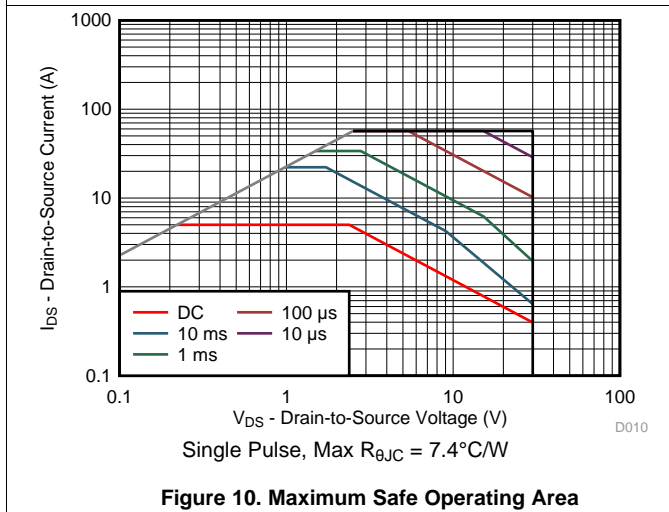


Figure 10. Maximum Safe Operating Area

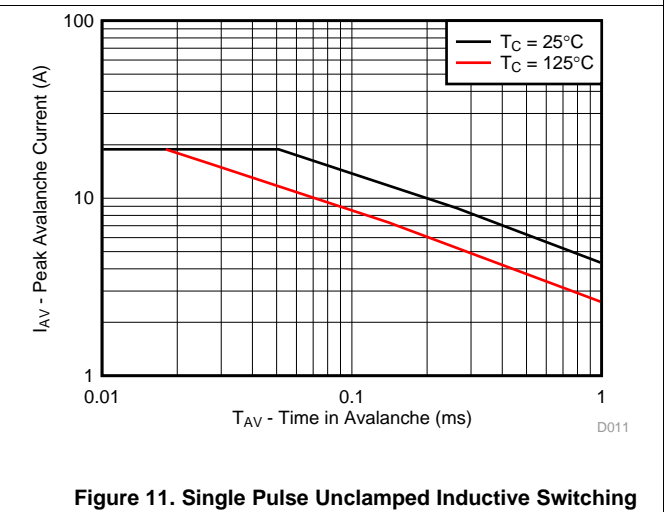


Figure 11. Single Pulse Unclamped Inductive Switching

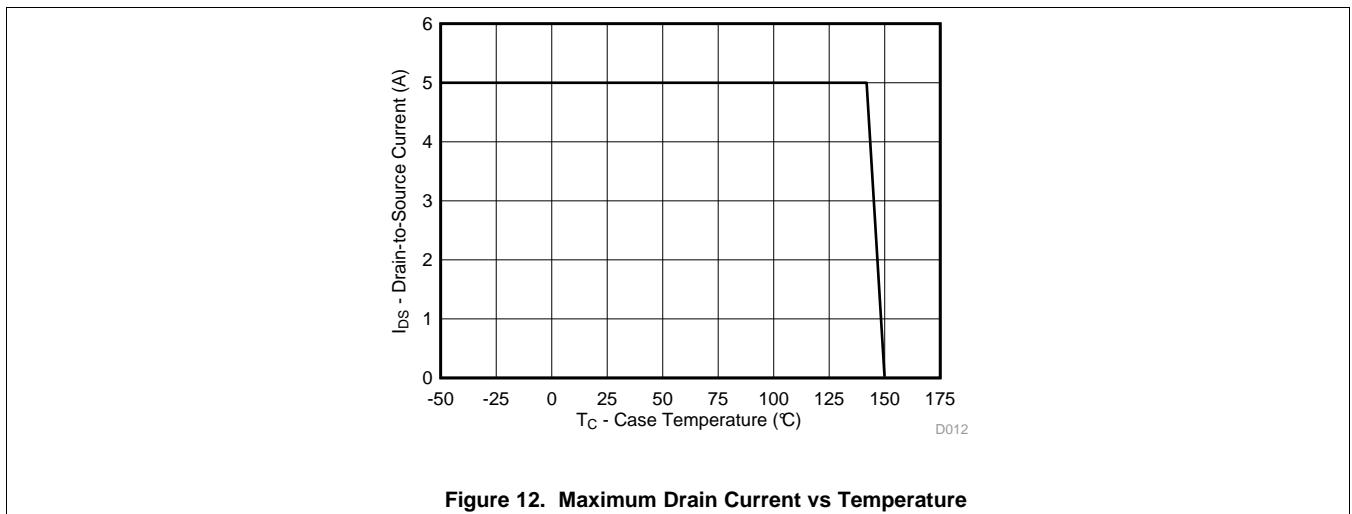


Figure 12. Maximum Drain Current vs Temperature

6 Device and Documentation Support

6.1 Community Resources

The following links connect to TI community resources. Linked contents are provided "AS IS" by the respective contributors. They do not constitute TI specifications and do not necessarily reflect TI's views; see TI's [Terms of Use](#).

TI E2E™ Online Community *TI's Engineer-to-Engineer (E2E) Community*. Created to foster collaboration among engineers. At e2e.ti.com, you can ask questions, share knowledge, explore ideas and help solve problems with fellow engineers.

Design Support *TI's Design Support* Quickly find helpful E2E forums along with design support tools and contact information for technical support.

6.2 Trademarks

NexFET, E2E are trademarks of Texas Instruments.
All other trademarks are the property of their respective owners.

6.3 Electrostatic Discharge Caution



These devices have limited built-in ESD protection. The leads should be shorted together or the device placed in conductive foam during storage or handling to prevent electrostatic damage to the MOS gates.

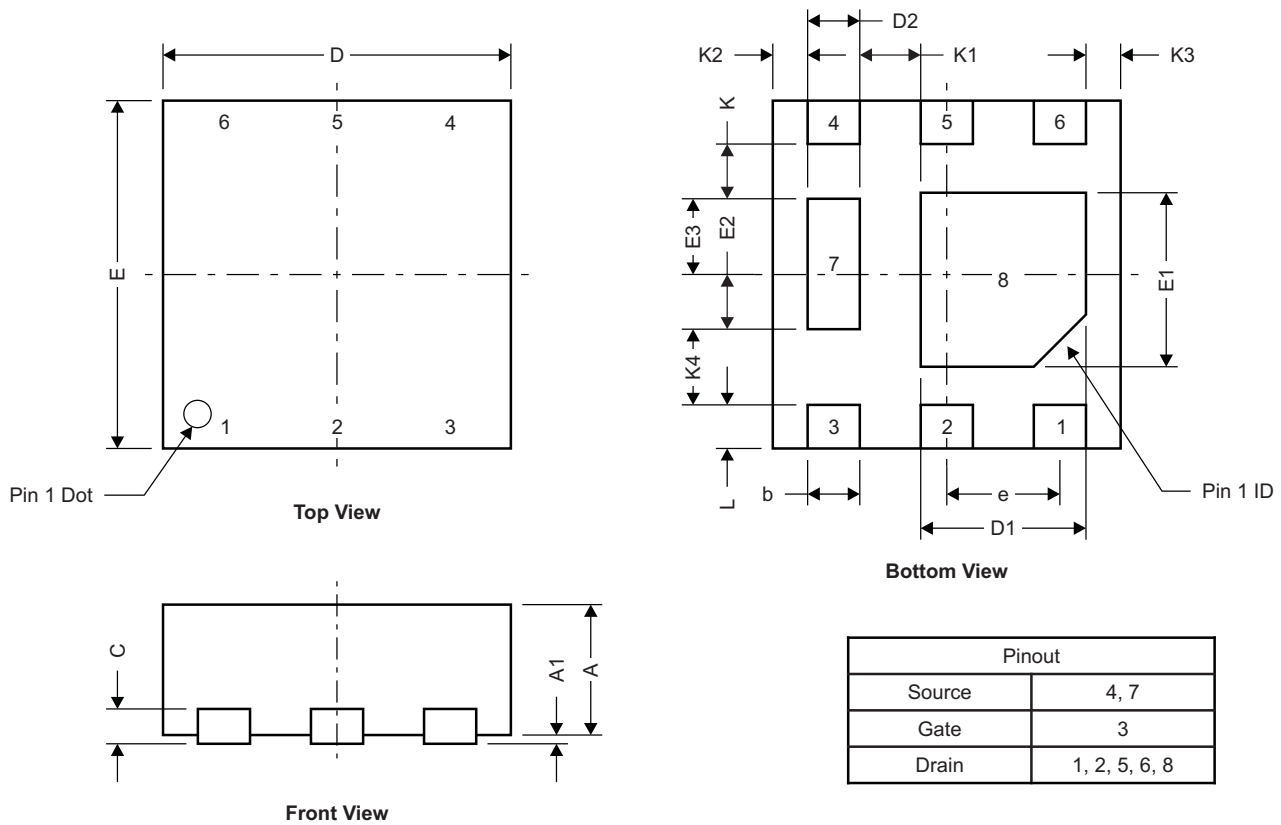
6.4 Glossary

[SLYZ022](#) — *TI Glossary*.

This glossary lists and explains terms, acronyms, and definitions.

7 Mechanical, Packaging, and Orderable Information

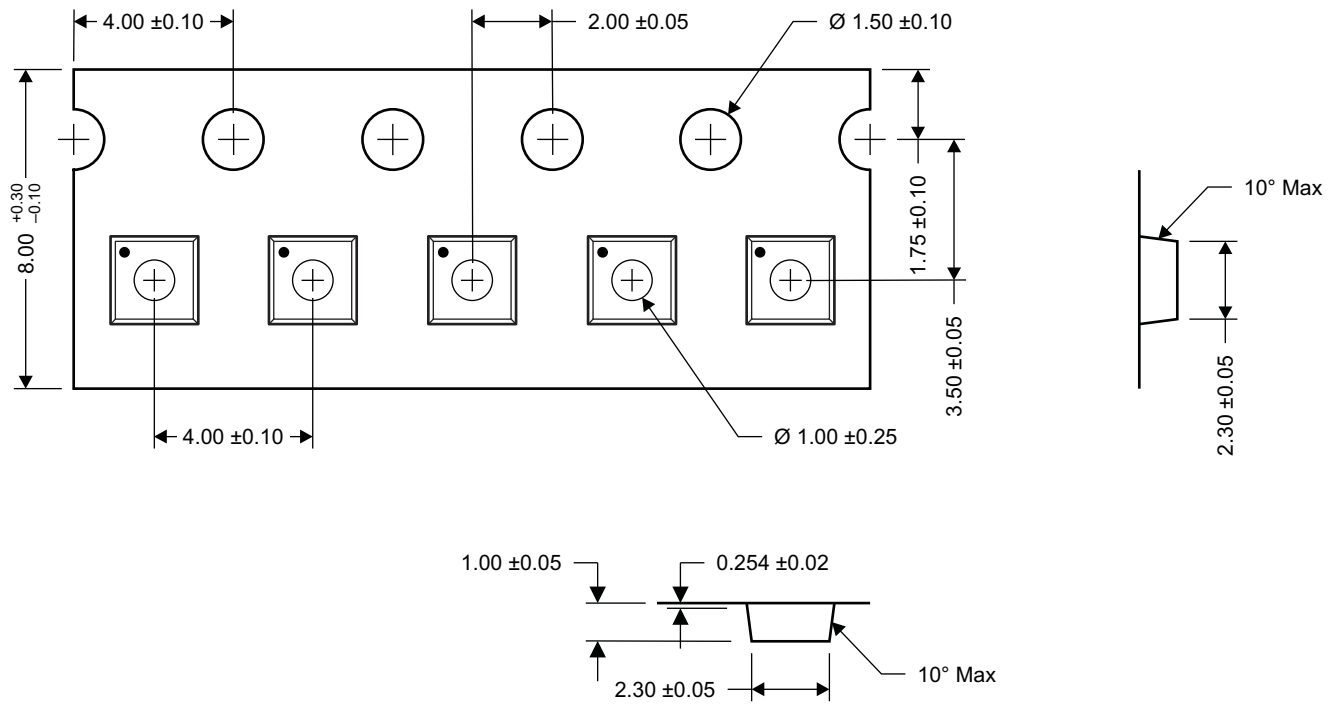
7.1 Q2 Package Dimensions



M0175-02

DIM	MILLIMETERS			INCHES		
	MIN	NOM	MAX	MIN	NOM	MAX
A	0.700	0.750	0.800	0.028	0.030	0.032
A1	0.000		0.050	0.000		0.002
b	0.250	0.300	0.350	0.010	0.012	0.014
C		0.203 TYP			0.008 TYP	
D		2.000 TYP			0.080 TYP	
D1	0.900	0.950	1.000	0.036	0.038	0.040
D2		0.300 TYP			0.012 TYP	
E		2.000 TYP			0.080 TYP	
E1	0.900	1.000	1.100	0.036	0.040	0.044
E2		0.280 TYP			0.0112 TYP	
E3		0.470 TYP			0.0188 TYP	
e		0.650 BSC			0.026 TYP	
K		0.280 TYP			0.0112 TYP	
K1		0.350 TYP			0.014 TYP	
K2		0.200 TYP			0.008 TYP	
K3		0.200 TYP			0.008 TYP	
K4		0.470 TYP			0.0188 TYP	
L	0.200	0.25	0.300	0.008	0.010	0.012

7.4 Q2 Tape and Reel Information



- Notes:
1. Measured from centerline of sprocket hole to centerline of pocket
 2. Cumulative tolerance of 10 sprocket holes is ± 0.20
 3. Other material available
 4. Typical SR of form tape Max 10^8 OHM/SQ
 5. All dimensions are in mm, unless otherwise specified.

M0168-01

PACKAGING INFORMATION

Orderable part number	Status (1)	Material type (2)	Package Pins	Package qty Carrier	RoHS (3)	Lead finish/ Ball material (4)	MSL rating/ Peak reflow (5)	Op temp (°C)	Part marking (6)
CSD17313Q2	Active	Production	WSON (DQK) 6	3000 LARGE T&R	Yes	NIPDAU	Level-1-260C-UNLIM	-55 to 150	1733
CSD17313Q2.B	Active	Production	WSON (DQK) 6	3000 LARGE T&R	Yes	NIPDAU	Level-1-260C-UNLIM	-55 to 150	1733
CSD17313Q2G4.B	Active	Production	WSON (DQK) 6	3000 LARGE T&R	Yes	NIPDAU	Level-1-260C-UNLIM	-55 to 150	1733
CSD17313Q2T	Active	Production	WSON (DQK) 6	250 SMALL T&R	Yes	NIPDAU	Level-1-260C-UNLIM	-55 to 150	1733
CSD17313Q2T.B	Active	Production	WSON (DQK) 6	250 SMALL T&R	Yes	NIPDAU	Level-1-260C-UNLIM	-55 to 150	1733

(1) **Status:** For more details on status, see our [product life cycle](#).

(2) **Material type:** When designated, preproduction parts are prototypes/experimental devices, and are not yet approved or released for full production. Testing and final process, including without limitation quality assurance, reliability performance testing, and/or process qualification, may not yet be complete, and this item is subject to further changes or possible discontinuation. If available for ordering, purchases will be subject to an additional waiver at checkout, and are intended for early internal evaluation purposes only. These items are sold without warranties of any kind.

(3) **RoHS values:** Yes, No, RoHS Exempt. See the [TI RoHS Statement](#) for additional information and value definition.

(4) **Lead finish/Ball material:** Parts may have multiple material finish options. Finish options are separated by a vertical ruled line. Lead finish/Ball material values may wrap to two lines if the finish value exceeds the maximum column width.

(5) **MSL rating/Peak reflow:** The moisture sensitivity level ratings and peak solder (reflow) temperatures. In the event that a part has multiple moisture sensitivity ratings, only the lowest level per JEDEC standards is shown. Refer to the shipping label for the actual reflow temperature that will be used to mount the part to the printed circuit board.

(6) **Part marking:** There may be an additional marking, which relates to the logo, the lot trace code information, or the environmental category of the part.

Multiple part markings will be inside parentheses. Only one part marking contained in parentheses and separated by a "-" will appear on a part. If a line is indented then it is a continuation of the previous line and the two combined represent the entire part marking for that device.

Important Information and Disclaimer: The information provided on this page represents TI's knowledge and belief as of the date that it is provided. TI bases its knowledge and belief on information provided by third parties, and makes no representation or warranty as to the accuracy of such information. Efforts are underway to better integrate information from third parties. TI has taken and continues to take reasonable steps to provide representative and accurate information but may not have conducted destructive testing or chemical analysis on incoming materials and chemicals. TI and TI suppliers consider certain information to be proprietary, and thus CAS numbers and other limited information may not be available for release.

In no event shall TI's liability arising out of such information exceed the total purchase price of the TI part(s) at issue in this document sold by TI to Customer on an annual basis.

IMPORTANT NOTICE AND DISCLAIMER

TI PROVIDES TECHNICAL AND RELIABILITY DATA (INCLUDING DATA SHEETS), DESIGN RESOURCES (INCLUDING REFERENCE DESIGNS), APPLICATION OR OTHER DESIGN ADVICE, WEB TOOLS, SAFETY INFORMATION, AND OTHER RESOURCES "AS IS" AND WITH ALL FAULTS, AND DISCLAIMS ALL WARRANTIES, EXPRESS AND IMPLIED, INCLUDING WITHOUT LIMITATION ANY IMPLIED WARRANTIES OF MERCHANTABILITY, FITNESS FOR A PARTICULAR PURPOSE OR NON-INFRINGEMENT OF THIRD PARTY INTELLECTUAL PROPERTY RIGHTS.

These resources are intended for skilled developers designing with TI products. You are solely responsible for (1) selecting the appropriate TI products for your application, (2) designing, validating and testing your application, and (3) ensuring your application meets applicable standards, and any other safety, security, regulatory or other requirements.

These resources are subject to change without notice. TI grants you permission to use these resources only for development of an application that uses the TI products described in the resource. Other reproduction and display of these resources is prohibited. No license is granted to any other TI intellectual property right or to any third party intellectual property right. TI disclaims responsibility for, and you will fully indemnify TI and its representatives against, any claims, damages, costs, losses, and liabilities arising out of your use of these resources.

TI's products are provided subject to [TI's Terms of Sale](#) or other applicable terms available either on [ti.com](https://www.ti.com) or provided in conjunction with such TI products. TI's provision of these resources does not expand or otherwise alter TI's applicable warranties or warranty disclaimers for TI products.

TI objects to and rejects any additional or different terms you may have proposed.

Mailing Address: Texas Instruments, Post Office Box 655303, Dallas, Texas 75265

Copyright © 2025, Texas Instruments Incorporated