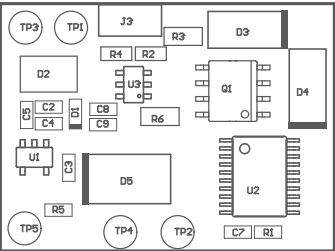


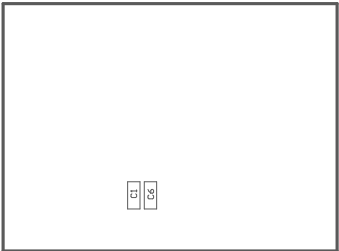
- ZZ1 ■ Install label in silkscreened box after final wash. Text shall be 8 pt font. Text shall be per the Label Table in the PDF schematic.
- ZZ2 ■ These assemblies are ESD sensitive, ESD precautions shall be observed.
- ZZ3 ■ These assemblies must be clean and free from flux and all contaminants. Use of no clean flux is not acceptable.
- ZZ4 ■ These assemblies must comply with workmanship standards IPC-A-610 Class 2, unless otherwise specified.



COMPONENTS MARKED 'DNP' SHOULD NOT BE POPULATED.

ASSEMBLY VARIANT: 001

PCB VIEWED FROM TOP SIDE	BOARD #:TIDA-020023	REV: E1	SUN REV: Not In VersionControl
MS Assembly Top	TID #:TIDA-020023		
PLOT NAME = Top Assembly Drawing	GENERATED : 4/2/2019 2:36:05 PM		TEXAS INSTRUMENTS



COMPONENTS MARKED 'DNP' SHOULD NOT BE POPULATED.
ASSEMBLY VARIANT: 001

PCB VIEWED FROM BOTTOM SIDE	BOARD #: TIDA-020023	REV: E1	SVN REV: Not In VersionControl
M6 Assembly Bottom	TID #: TIDA-020023		
PLOT NAME = Bottom Assembly Drawing	GENERATED : 4/2/2019 2:36:05 PM		TEXAS INSTRUMENTS