

- NOTES - UNLESS OTHERWISE NOTED:
- 1. RESISTANCE VALUES ARE IN OHMS
  - 2. CAPACITANCE VALUES ARE IN MICROFARADS (uF)
  - 3. ALL 0.1uF and 0.01uF CAPACITORS ARE FOR DECOUPLING PURPOSES AND SHOULD BE PLACED CLOSE TO THE IC THEY ARE SHOWN NEAR ON THE SCHEMATIC.
  - 4. BRANCH FROM SCH-00C003045
  - 5. BRANCH FROM PCA-00C011201 REV A

BARE BOARD


SERIAL NUMBER  
TAG

PCB-00C022201

- PAGE 01 - TITLE - INDEX - REVISIONS
- PAGE 02 - BLOCK DIAGRAM
- PAGE 03 - POWER TREE
- PAGE 04 - BOARD TO BOARD INTERFACE
- PAGE 05 - 3.3V POWER SUPPLY
- PAGE 06 - FPD LINK LOAD SWITCH
- PAGE 07 - VDD\_5V0, 2V5, 1V1 & SWITCHED 1V8
- PAGE 08 - FPD LINK DESERIALIZER HUB
- PAGE 09 - FPD LINK INTERFACE AND FILTERS
- PAGE 10 - HDMI INPUT
- PAGE 11 - ENET PHY
- PAGE 12 - CAN, BUFFERED IO, EXPANSION
- PAGE 13 - SD CARD, & MIPI DEBUG/EMULATION
- PAGE 14 - HDMI OUT
- PAGE 15 - GPIO EXPANDER, TEMP SENSOR, SWITCHES
- PAGE 16 - UART TO USB

| I2C ADDRESS TABLE BUS1 |                |         |
|------------------------|----------------|---------|
| REF                    | DEVICE         | ADDRESS |
| U6                     | DS90UB960 I2C1 | 0110010 |
|                        |                |         |
| U20                    | LP8732 (SOM)   | 1100000 |
| U18                    | LP8733 (SOM)   | 1100001 |
|                        |                |         |
|                        |                |         |
|                        |                |         |
|                        |                |         |
|                        |                |         |

| I2C ADDRESS TABLE BUS2 |                |         |
|------------------------|----------------|---------|
| REF                    | DEVICE         | ADDRESS |
| U6                     | DS90UB960 I2C2 | 0110010 |
| U22                    | TCA9539        | 1110100 |
| U28                    | TMP102         | 1001001 |
| U8                     | TMP102 (SOM)   | 1001000 |
| U17                    | TCA9539 (SOM)  | 1110101 |
| U18                    | M24512 (SOM)   | 1010100 |
| U18                    | M24512 (SOM)   | 1011100 |
| U44                    | ADV7611        | 1001100 |
| U45                    | EDID EEPROM    | 1010000 |
|                        |                |         |



Define | Design | Deploy

www.D3Engineering.com

Wednesday, July 19, 2017

D3 Engineering  
1057 E Henrietta Rd  
Rochester, NY 14623  
p. (585) 429-1550 f. (585) 429-1551  
www.d3engineering.com

TDA3x Starter Kit 4-FPD Baseboard 2G

Title Page

SIZE  
B

CAGE CODE  
3V6D5

DWG NO  
SCH-00C022201

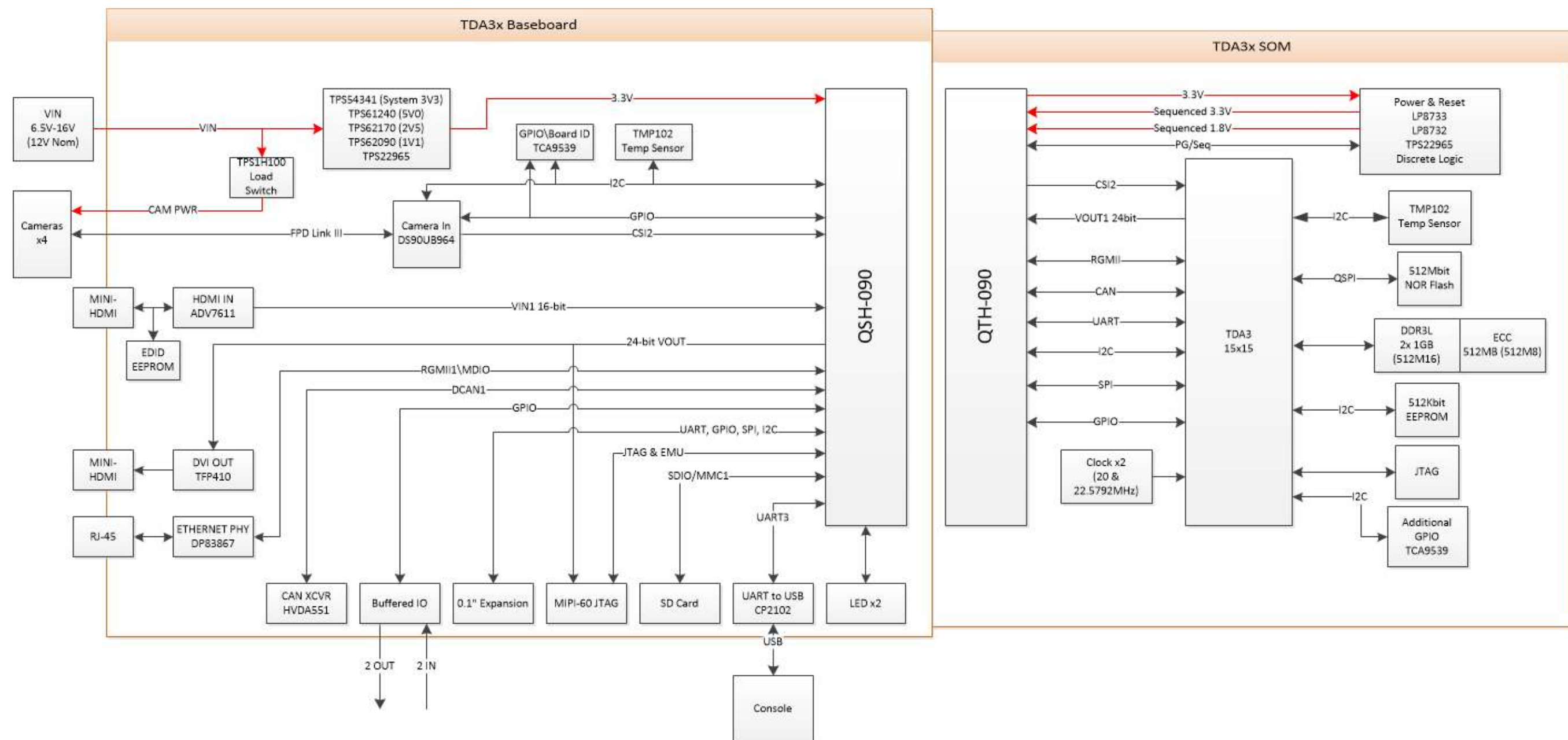
REV  
-

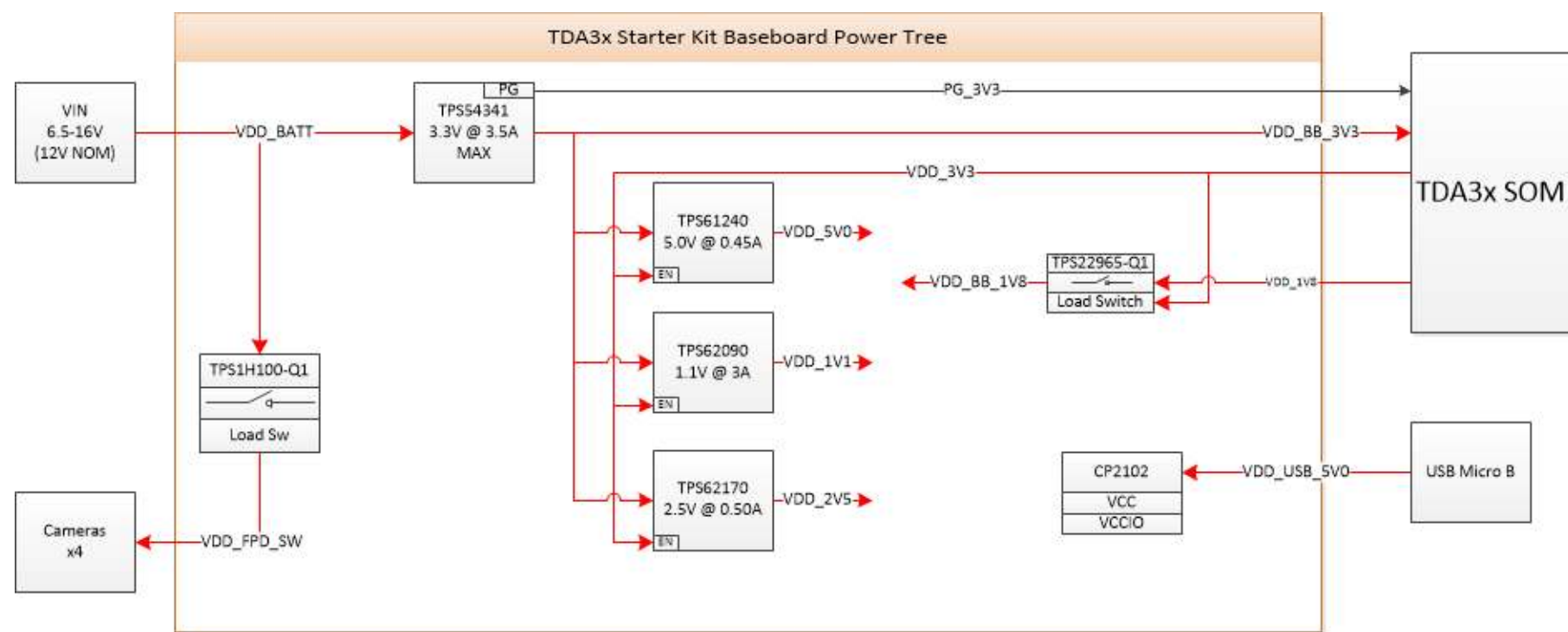
SCALE  
1:1

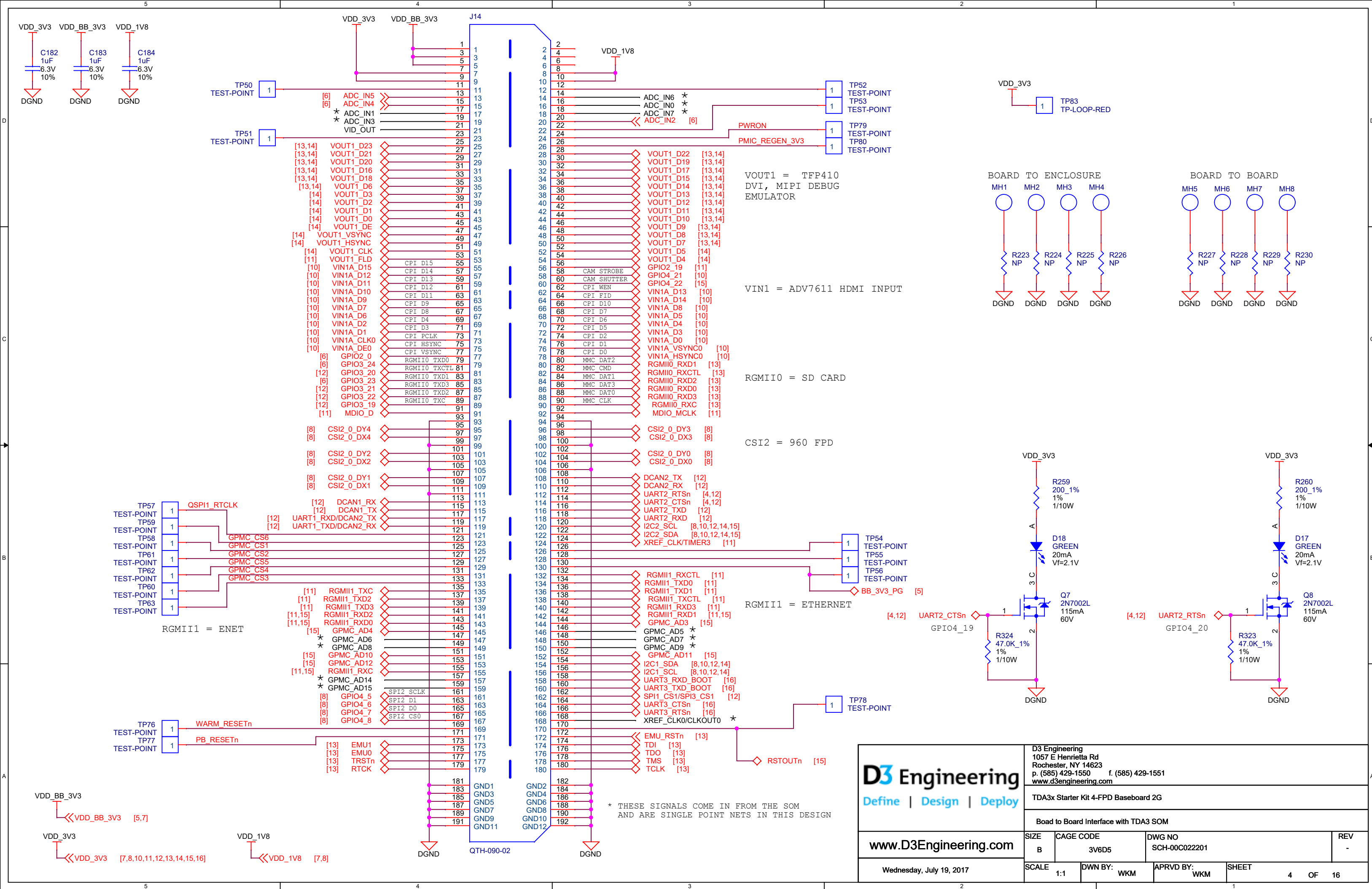
DWN BY:  
WKM

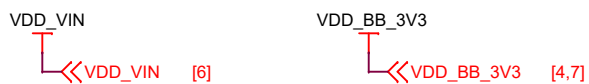
APRVD BY:  
WKM


SHEET  
1 OF 16





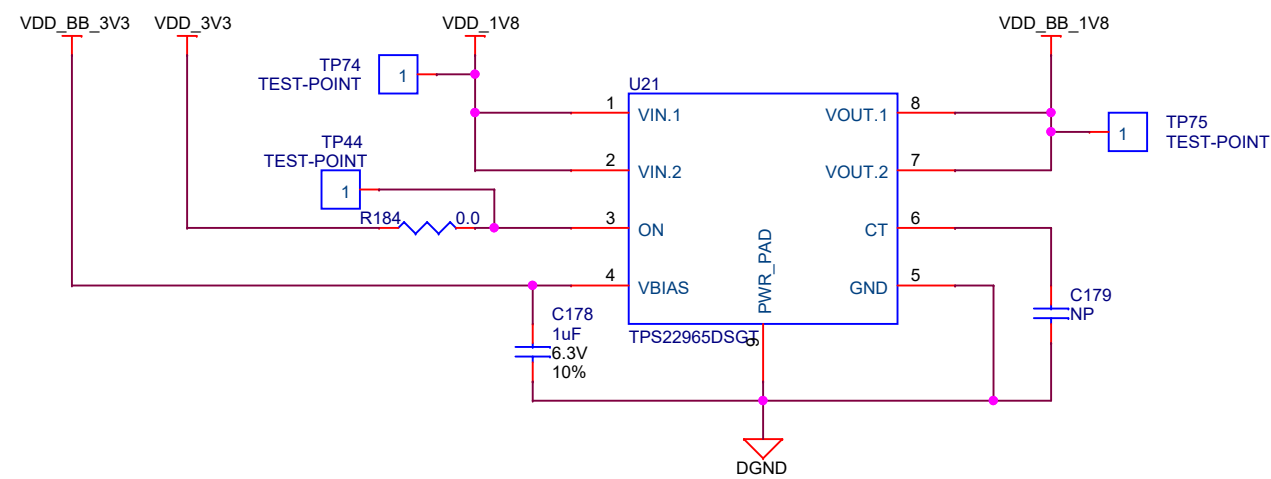
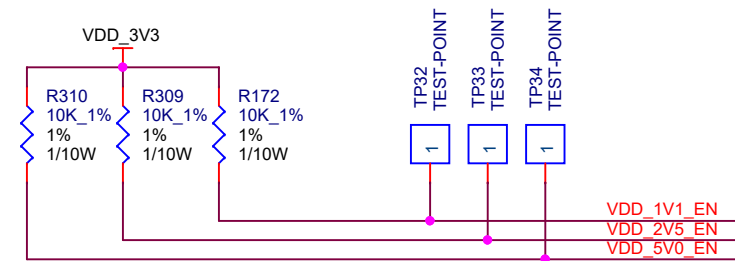


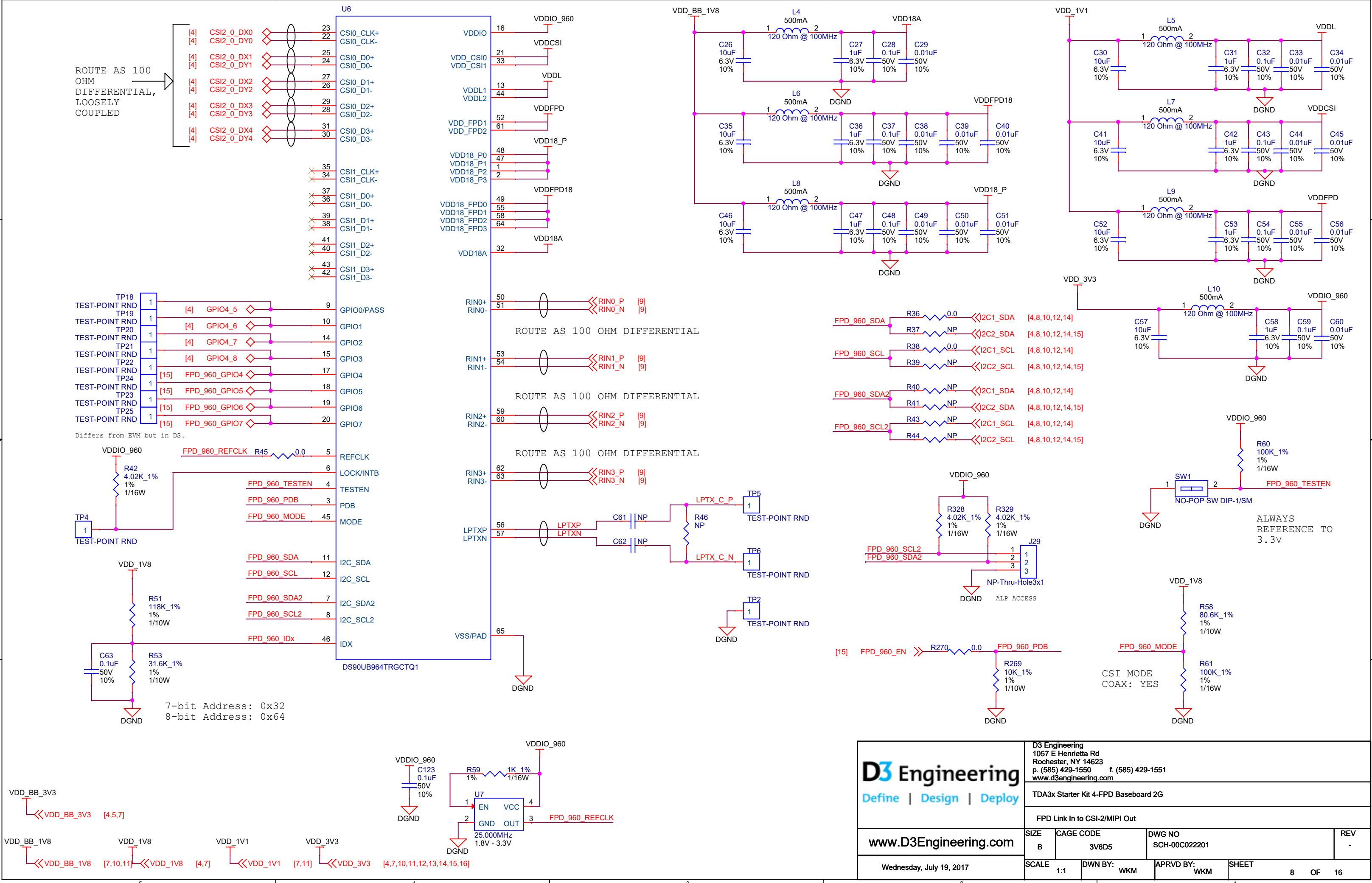


|   |   |                    |                         |                  |
|---|---|--------------------|-------------------------|------------------|
| <br>Define   Design   Deploy | D3 Engineering<br>1057 E Henrietta Rd<br>Rochester, NY 14623<br>p. (585) 429-1550 f. (585) 429-1551<br><a href="http://www.d3engineering.com">www.d3engineering.com</a> |                    |                         |                  |
|   | TDA3x Starter Kit 4-FPD Baseboard 2G  |                    |                         |                  |
|   | 3.3V Power Supply   |                    |                         |                  |
| <a href="http://www.D3Engineering.com">www.D3Engineering.com</a>  | SIZE<br>B   | CAGE CODE<br>3V6D5 | DWG NO<br>SCH-00C022201 | REV<br>-         |
| Wednesday, July 19, 2017  | SCALE<br>1:1  | DWN BY:<br>WKM     | APRVD BY:<br>WKM        | SHEET<br>5 OF 16 |



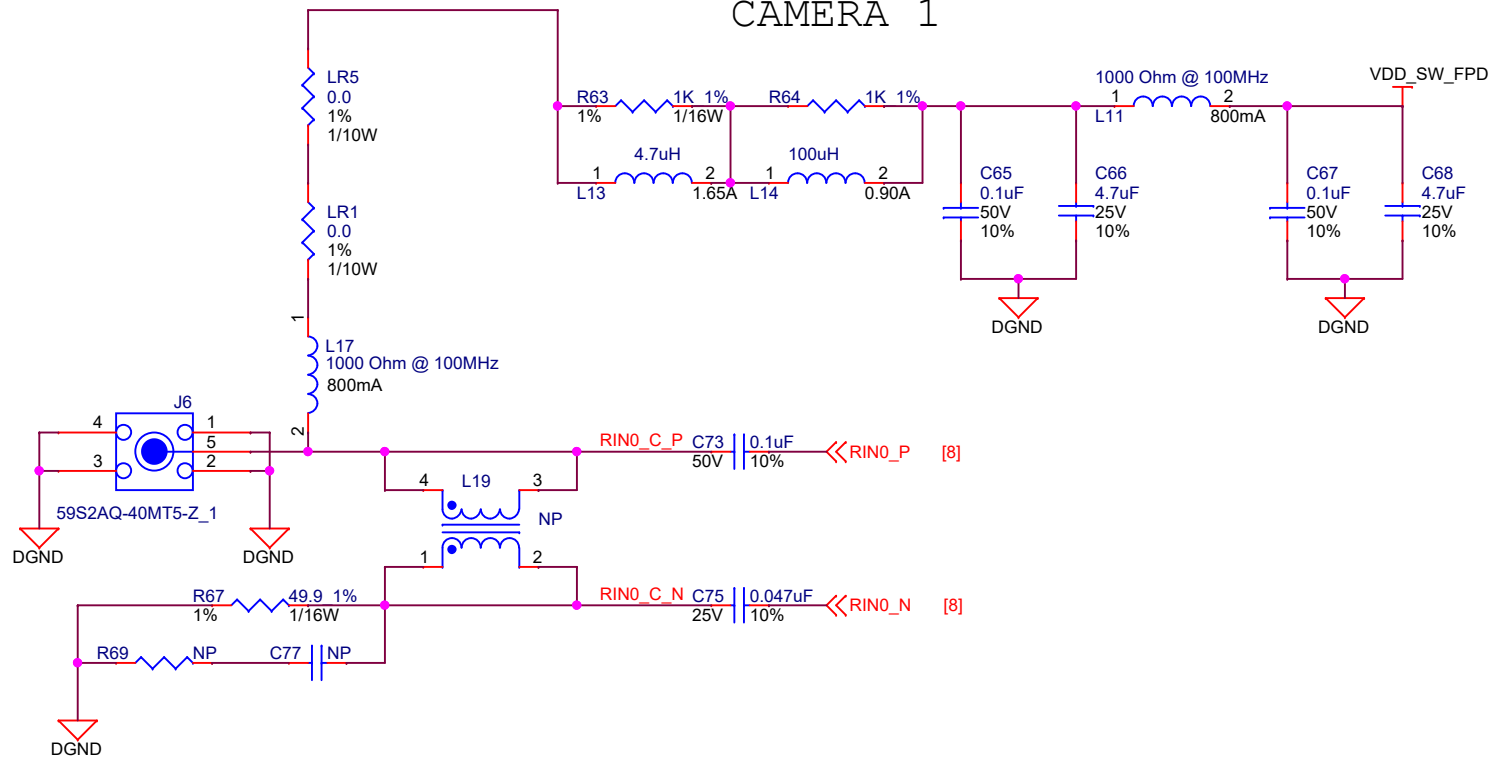




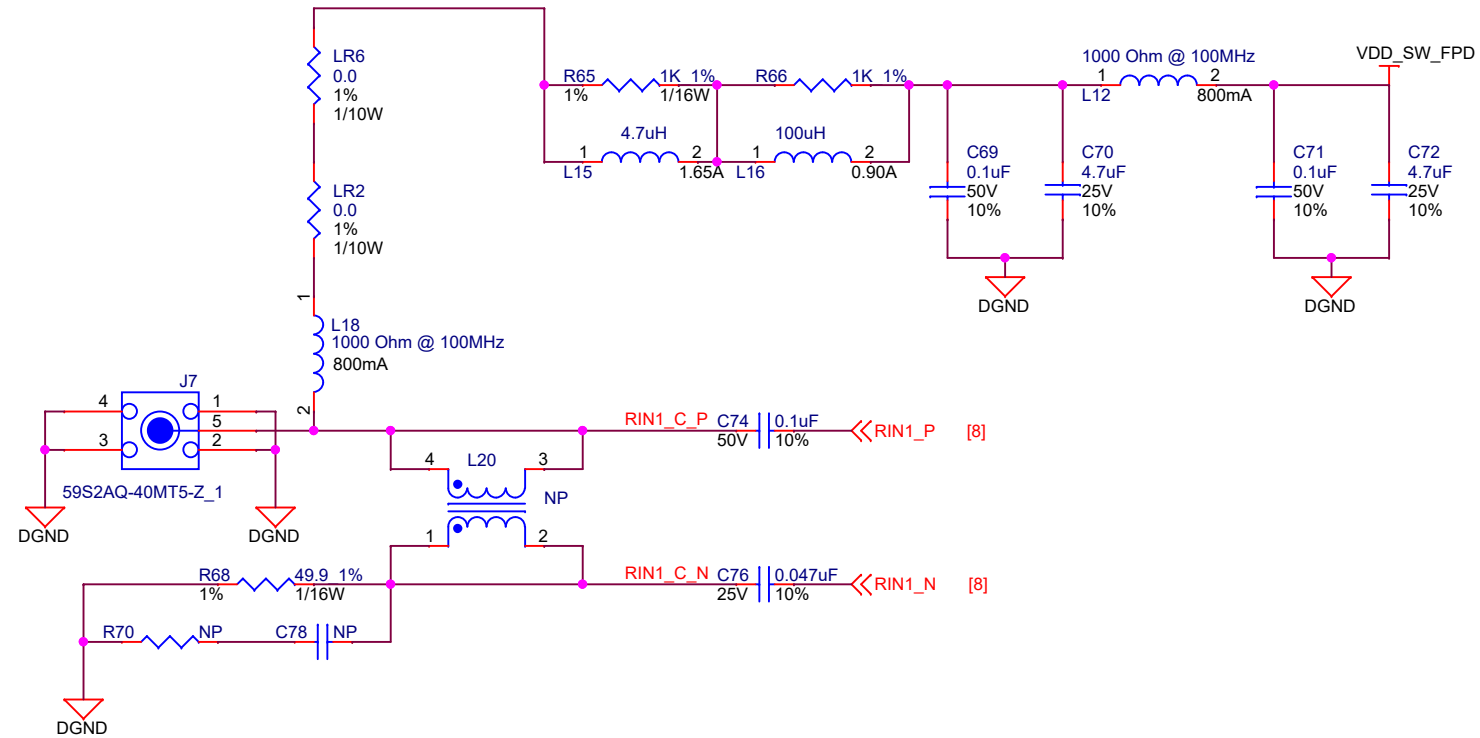




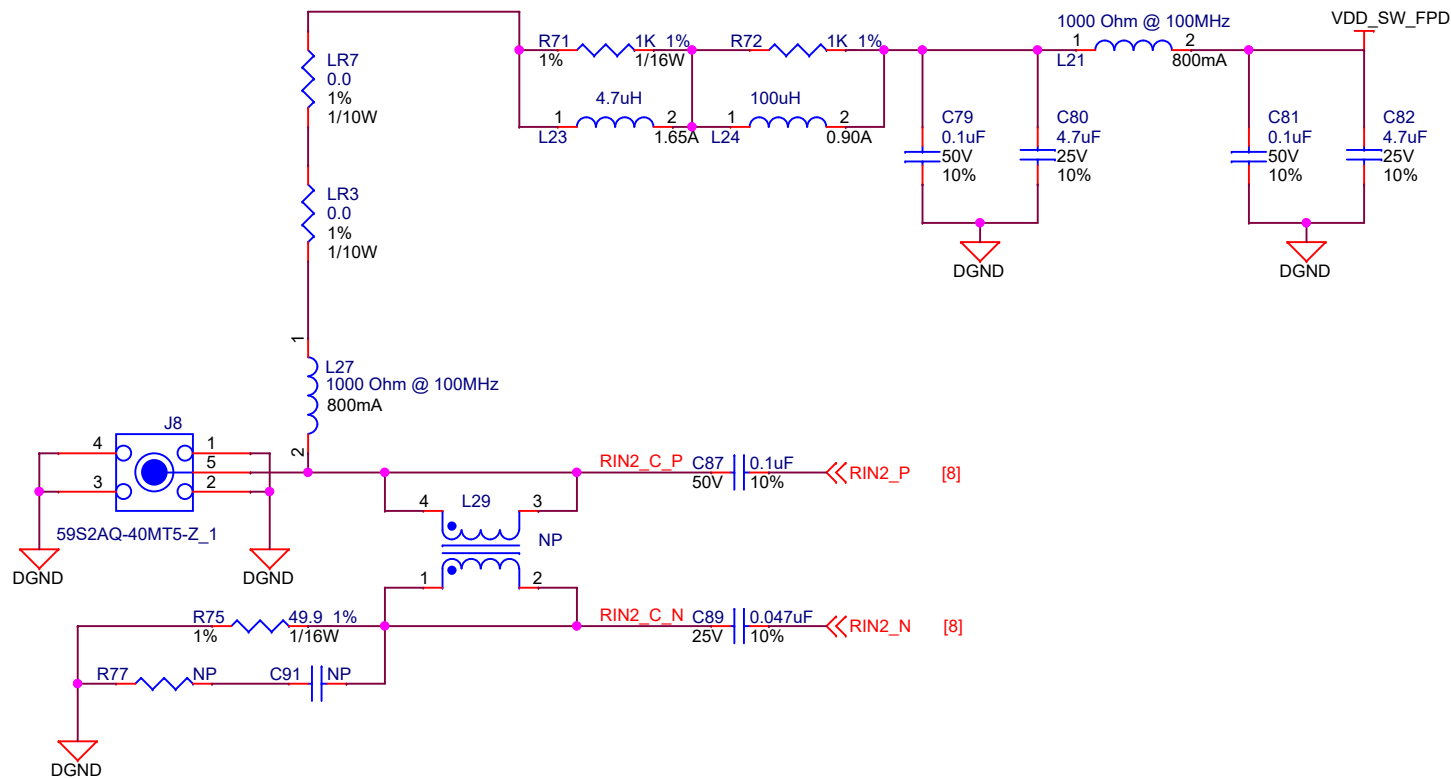
## CAMERA 1



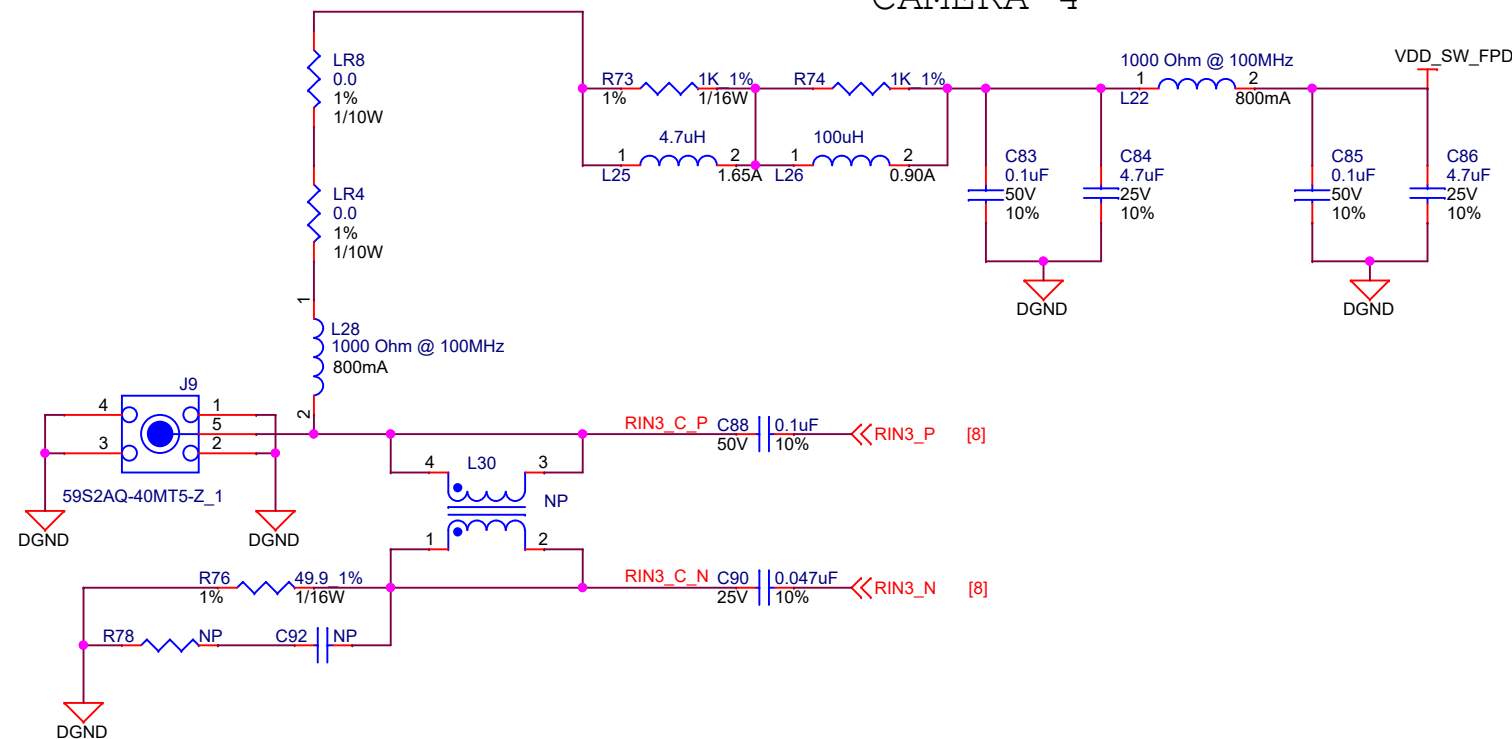
## CAMERA 2



## CAMERA 3



## CAMERA 4



VDD\_SW\_FPD  
VDD\_SW\_FPD [6]

**D3 Engineering**  
Define | Design | Deploy

[www.D3Engineering.com](http://www.D3Engineering.com)

Wednesday, July 19, 2017

D3 Engineering  
1057 E Henrietta Rd  
Rochester, NY 14623  
p. (585) 429-1550 f. (585) 429-1551  
[www.d3engineering.com](http://www.d3engineering.com)

TDA3x Starter Kit 4-FPD Baseboard 2G

FPD Link In Interface

SIZE  
B

CAGE CODE  
3V6D5

DWG NO  
SCH-00C022201

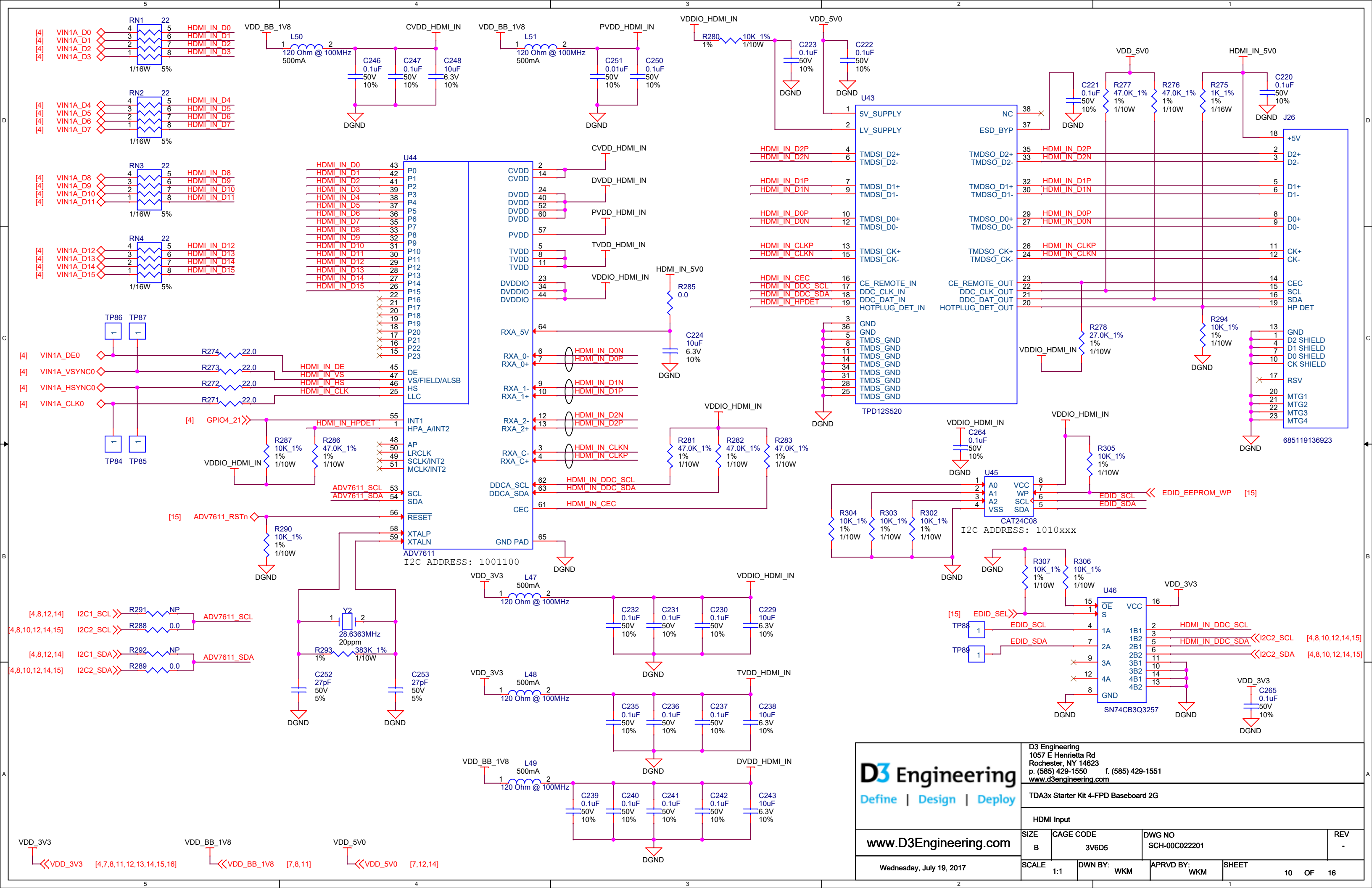
REV  
-

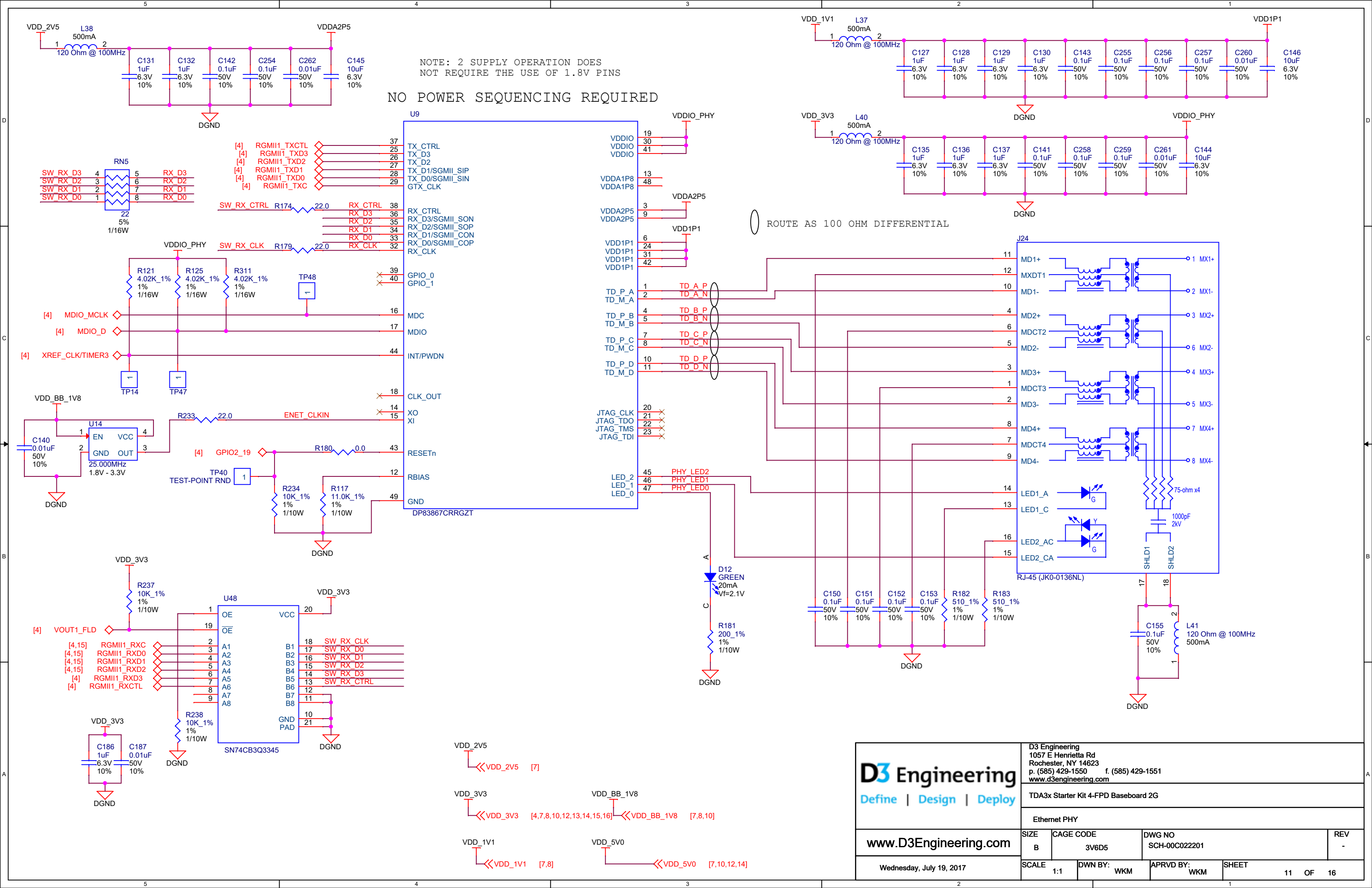
SCALE  
1:1

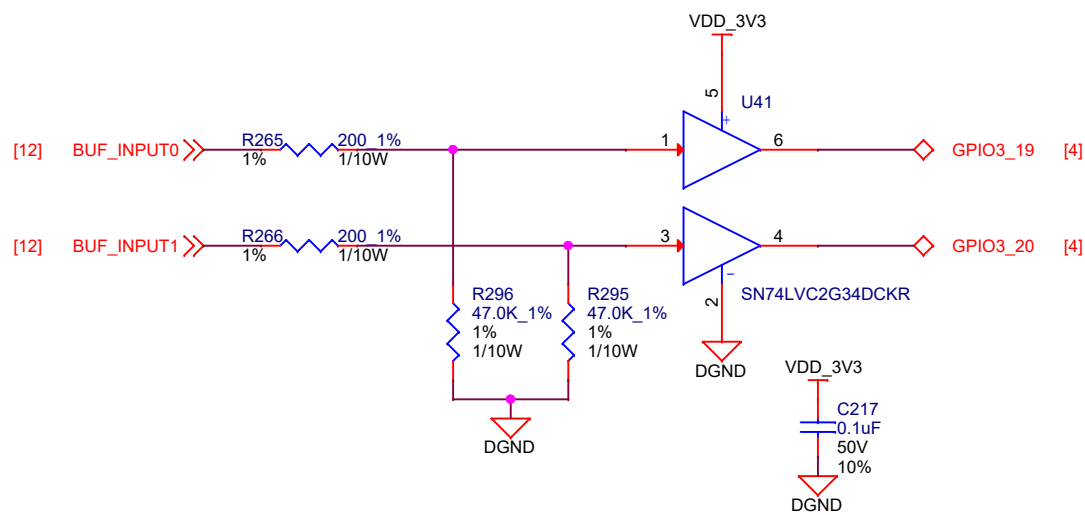
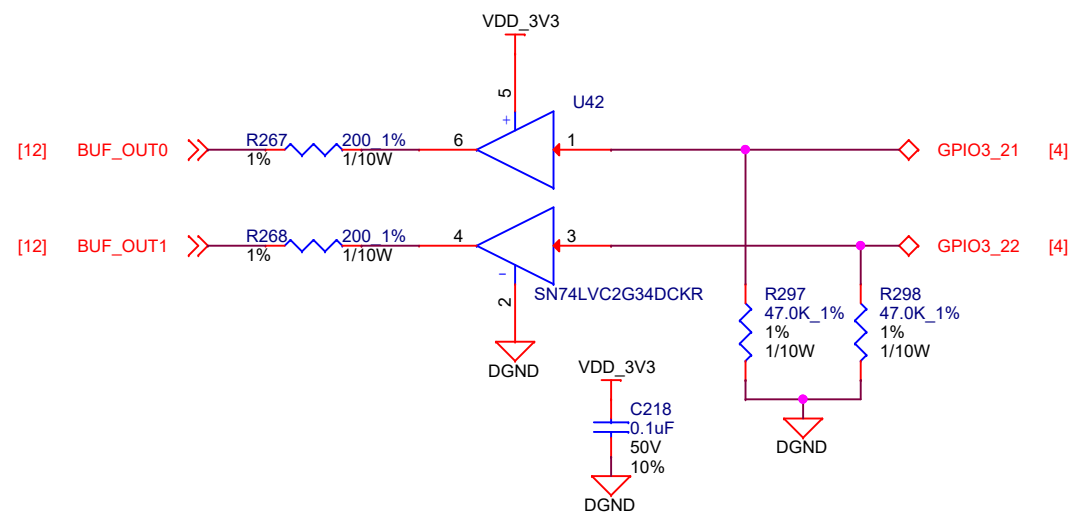
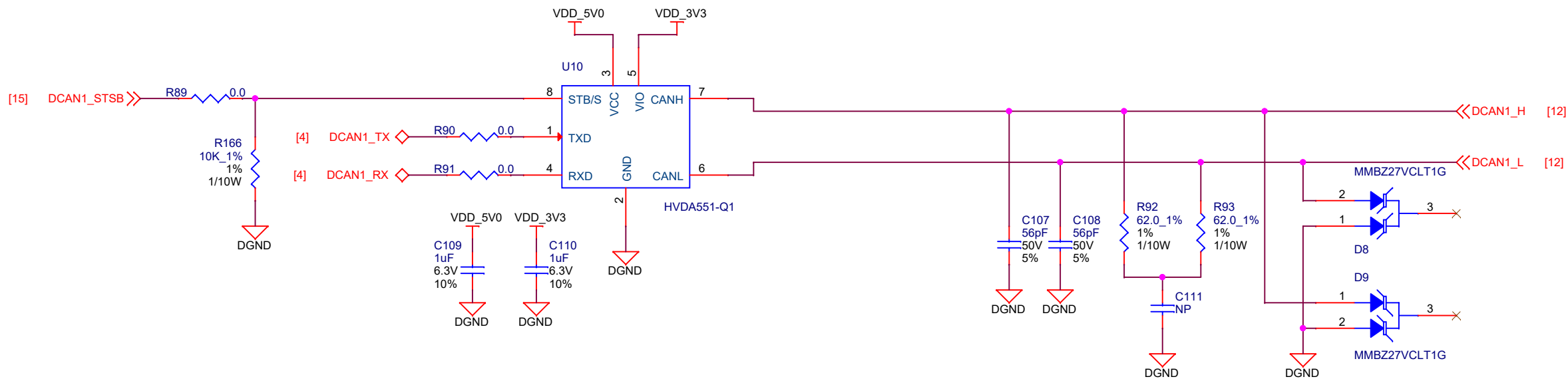
DWN BY:  
WKM

APRVD BY:  
WKM

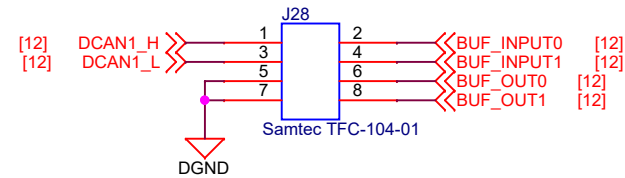
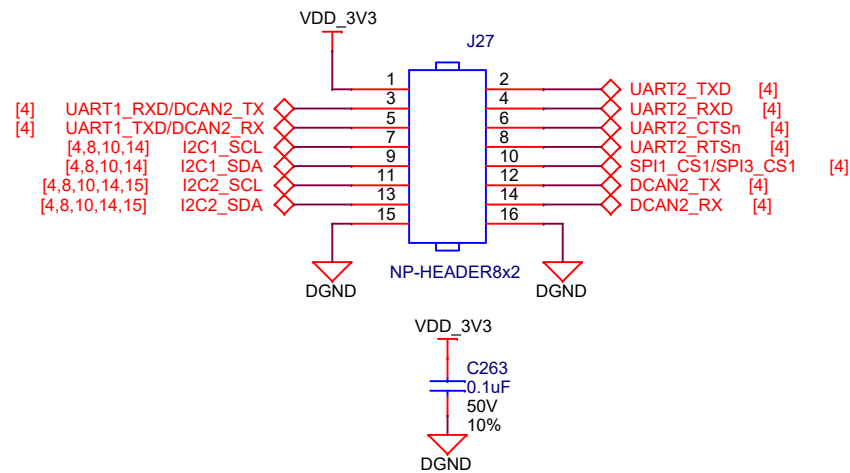
SHEET  
9 OF 16






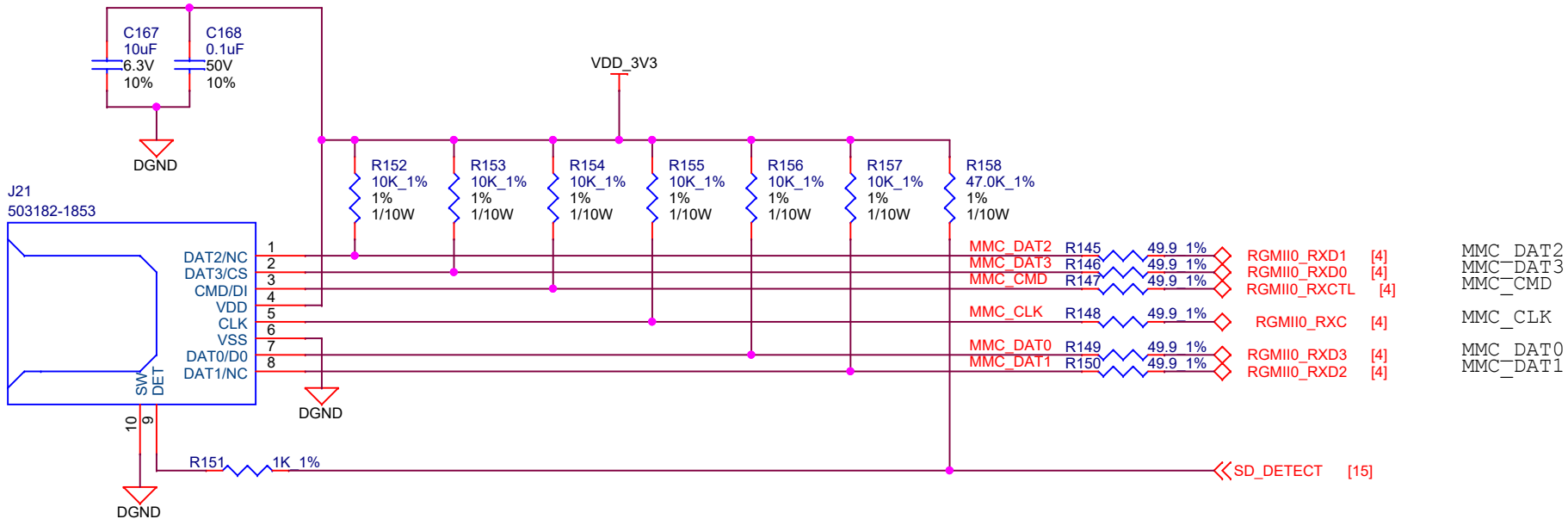
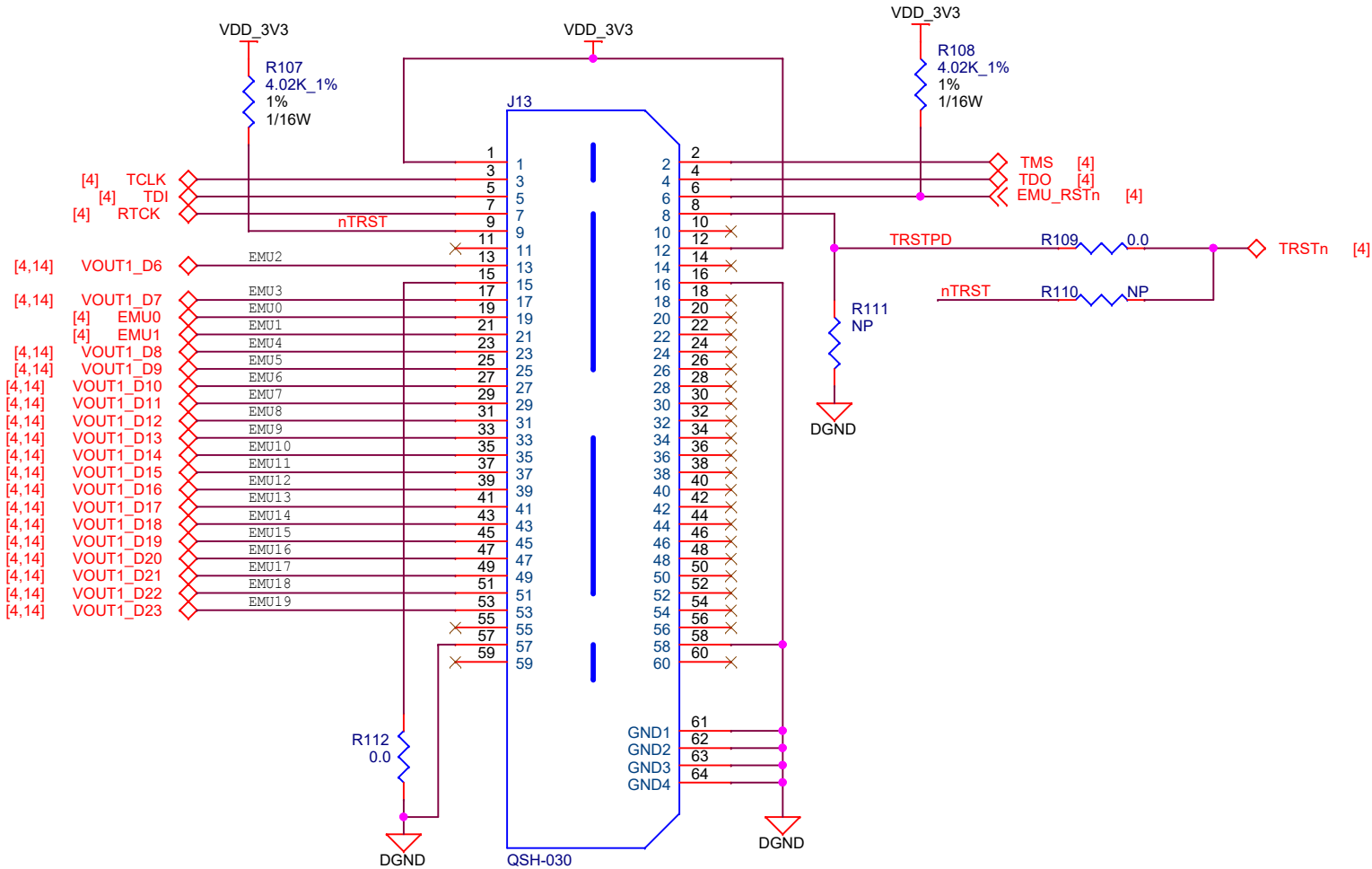



### SPARE SIGNALS FOR EXPANSION



|  |  |                    |                         |                   |
|--|--|--------------------|-------------------------|-------------------|
| <br>www.D3Engineering.com | D3 Engineering<br>1057 E Henrietta Rd<br>Rochester, NY 14623<br>p. (585) 429-1550 f. (585) 429-1551<br>www.d3engineering.com |                    |                         |                   |
|  | TDA3x Starter Kit 4-FPD Baseboard 2G   |                    |                         |                   |
|  | CAN INTERFACE, EXPANSION, BUFFERED IO  |                    |                         |                   |
|  | SIZE<br>B  | CAGE CODE<br>3V6D5 | DWG NO<br>SCH-00C022201 | REV<br>-          |
| Wednesday, July 19, 2017   | SCALE<br>1:1   | DWN BY:<br>WKM     | APRVD BY:<br>WKM        | SHEET<br>12 OF 16 |

MIPI-60 JTAG/EMULATION





Define | Design | Deploy

www.D3Engineering.com

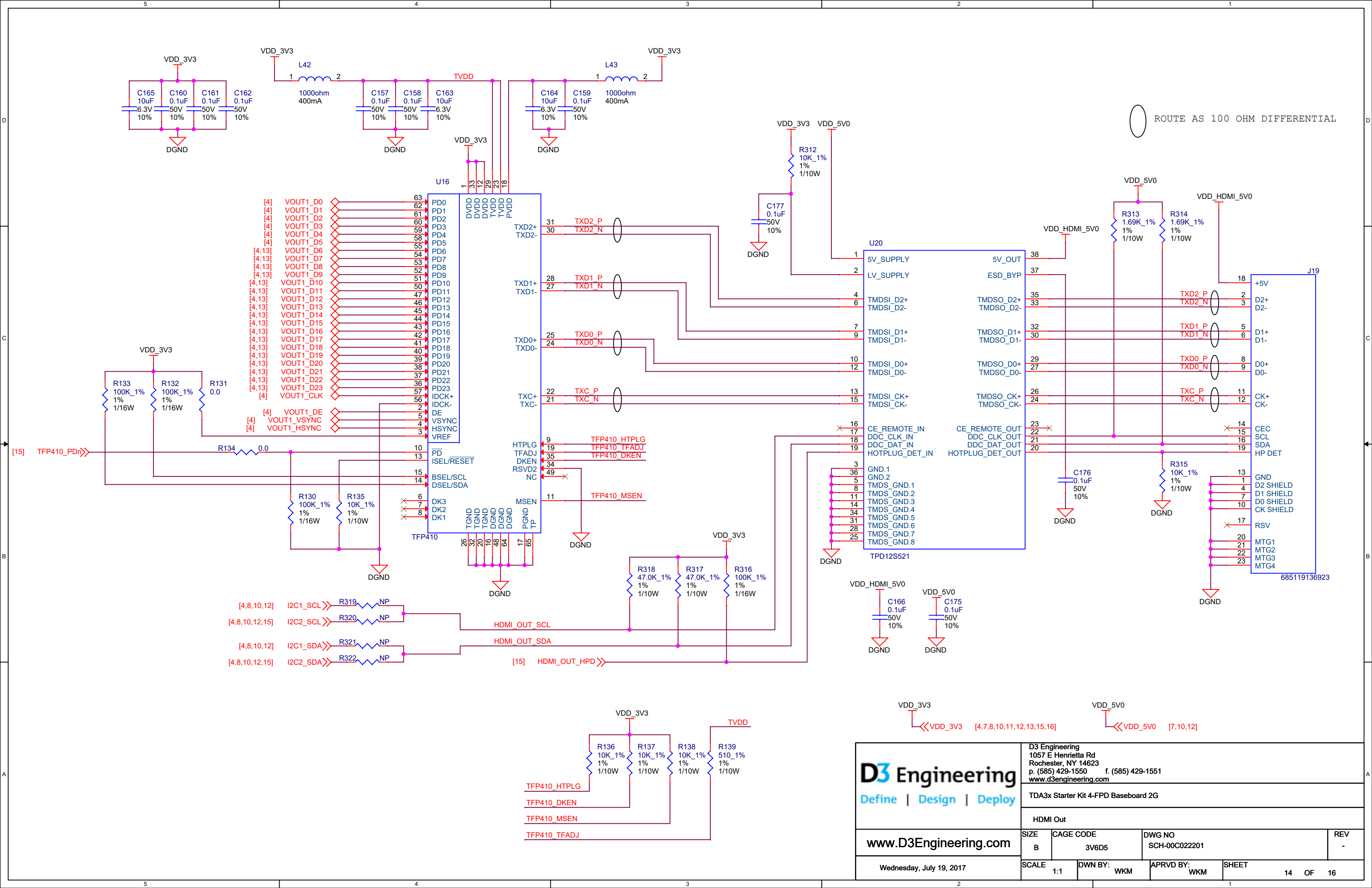
Wednesday, July 19, 2017

D3 Engineering  
1057 E Henrietta Rd  
Rochester, NY 14623  
p. (585) 429-1550 f. (585) 429-1551  
www.d3engineering.com

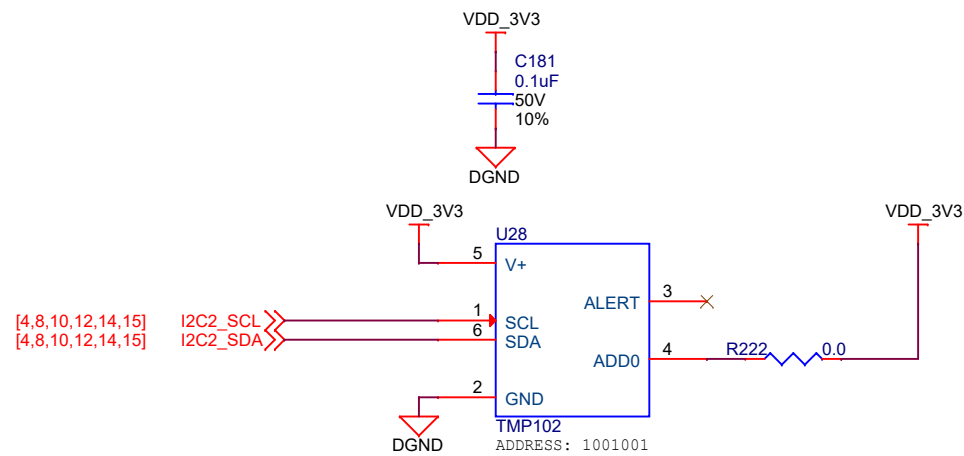
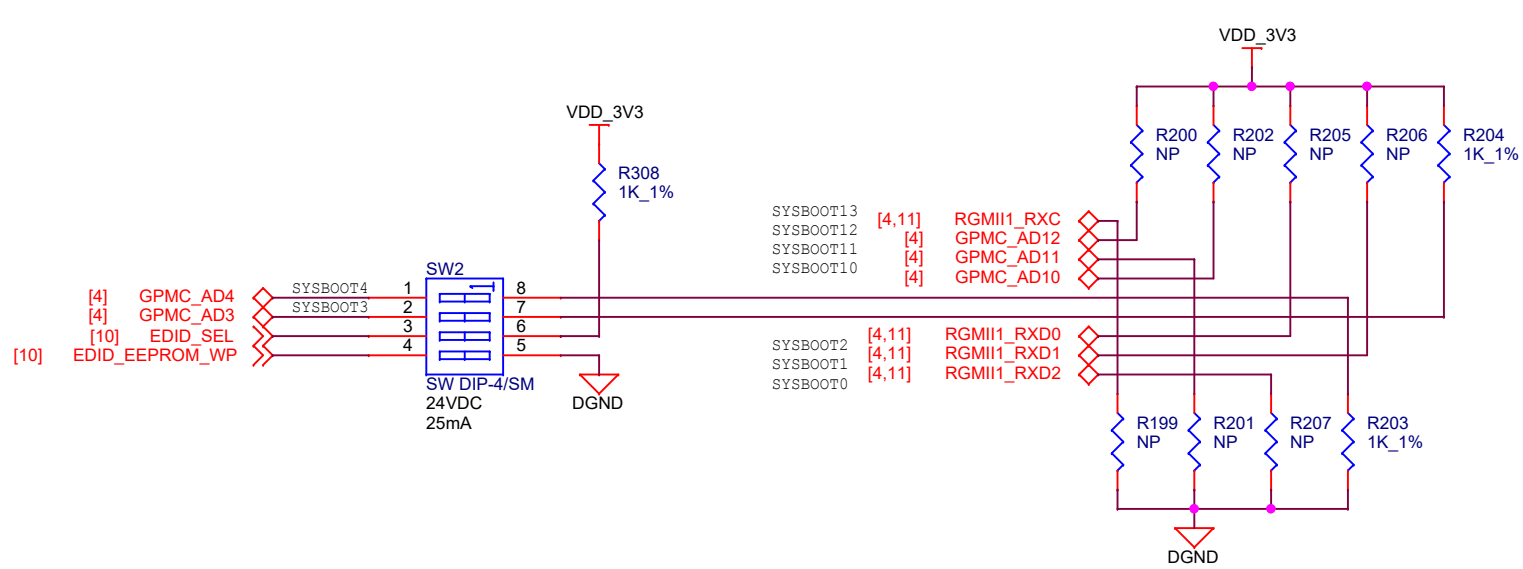
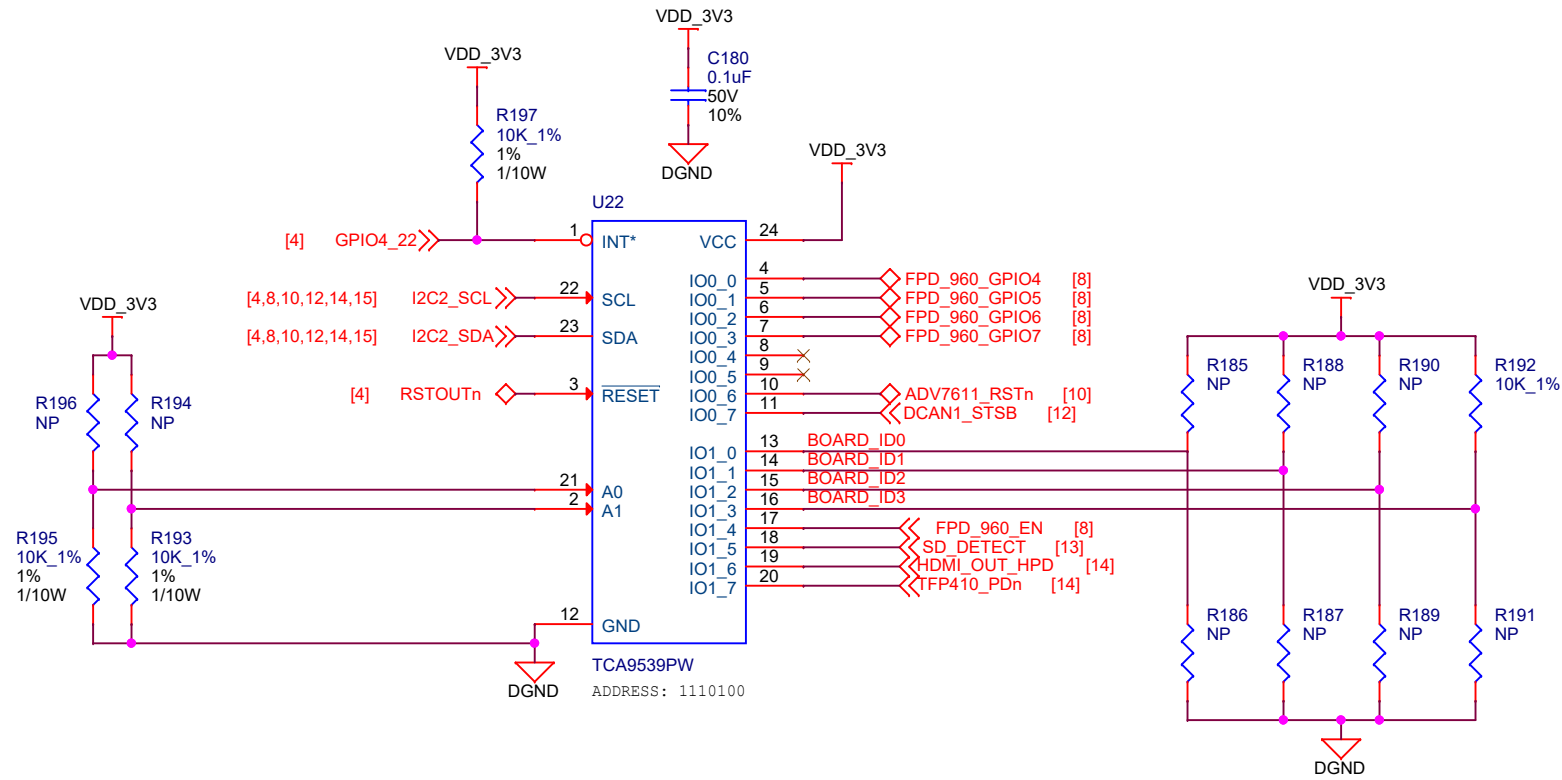
TDA3x Starter Kit 4-FPD Baseboard 2G


SD Card, MIPI-60 JTAG

|              |                    |                         |                   |
|--------------|--------------------|-------------------------|-------------------|
| SIZE<br>B    | CAGE CODE<br>3V6D5 | DWG NO<br>SCH-00C022201 | REV<br>-          |
| SCALE<br>1:1 | DWN BY:<br>WKM     | APRVD BY:<br>WKM        | SHEET<br>13 OF 16 |







|  |  |                    |                         |                   |
|--|--|--------------------|-------------------------|-------------------|
| <br>www.D3Engineering.com | D3 Engineering<br>1057 E Henrietta Rd<br>Rochester, NY 14623<br>p. (585) 429-1550 f. (585) 429-1551<br>www.d3engineering.com |                    |                         |                   |
|  | TDA3x Starter Kit 4-FPD Baseboard 2G   |                    |                         |                   |
|  | GPIO EXPANDER, SWITCHES, TMP102  |                    |                         |                   |
| Monday, July 24, 2017  | SIZE<br>B  | CAGE CODE<br>3V6D5 | DWG NO<br>SCH-00C022201 | REV<br>-          |
|  | SCALE<br>1:1   | DWN BY:<br>WKM     | APRVD BY:<br>WKM        | SHEET<br>15 OF 16 |

