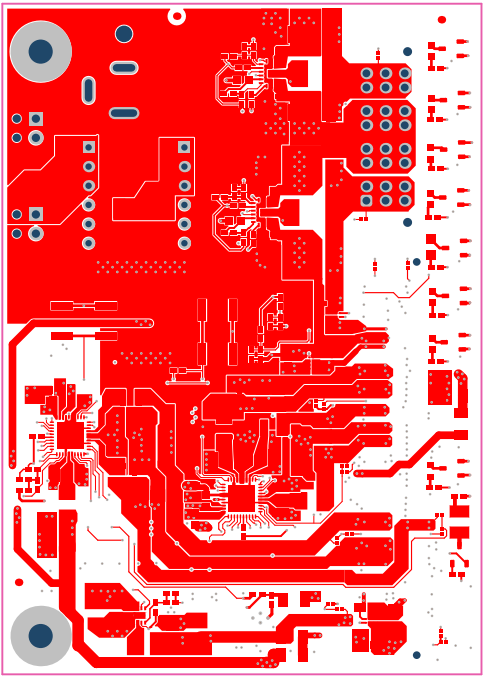


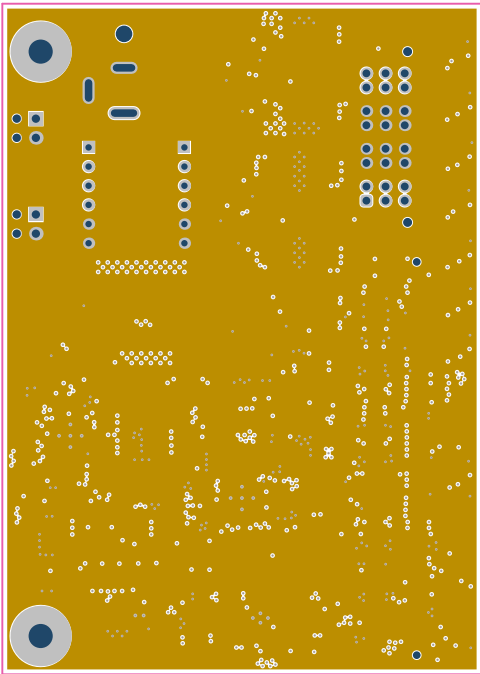
ALL ARTWORK VIEWED FROM TOP SIDE	BOARD #: TIDA-01480	REV: E2	SUN REV: Not In VersionControl
LAYER NAME = Top Overlay	TID #: TIDA-01480		
PLOT NAME = Top Overlay	GENERATED : 12/7/2017 11:06:25 AM	TEXAS INSTRUMENTS	



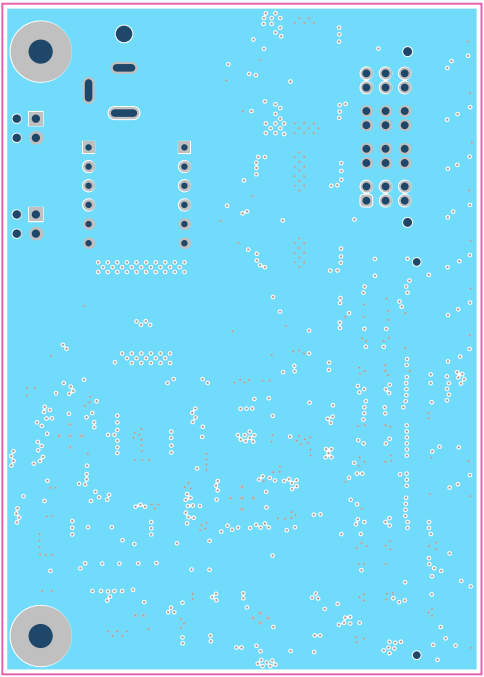
ALL ARTWORK VIEWED FROM TOP SIDE	BOARD #:	TIDA-01480	REV:	E2	SUN REV:	Not In VersionControl
LAYER NAME =	Top Solder	TID #:	TIDA-01480			
PLOT NAME =	Top Solder Mask	GENERATED	: 12/7/2017	11:06:27 AM	TEXAS INSTRUMENTS	



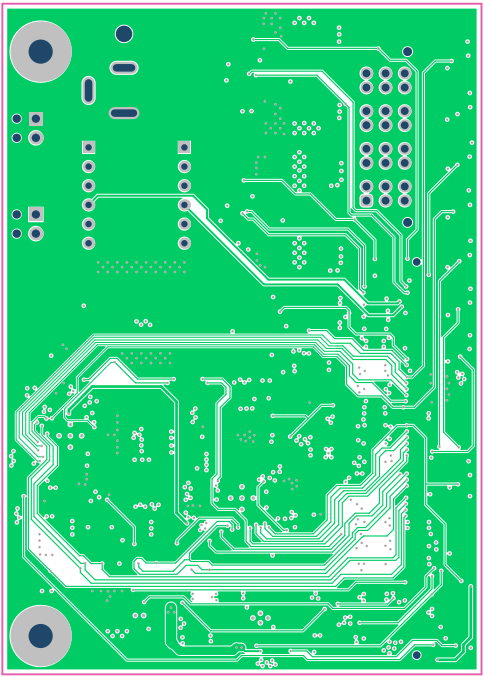
ALL ARTWORK VIEWED FROM TOP SIDE	BOARD #:	TIDA-01480	REV:	E2	SUN REV:	Not In VersionControl
LAYER NAME =	Top Layer	TID #:	TIDA-01480			
PLOT NAME =	Top Layer	GENERATED	: 12/7/2017	11:06:28 AM	TEXAS INSTRUMENTS	



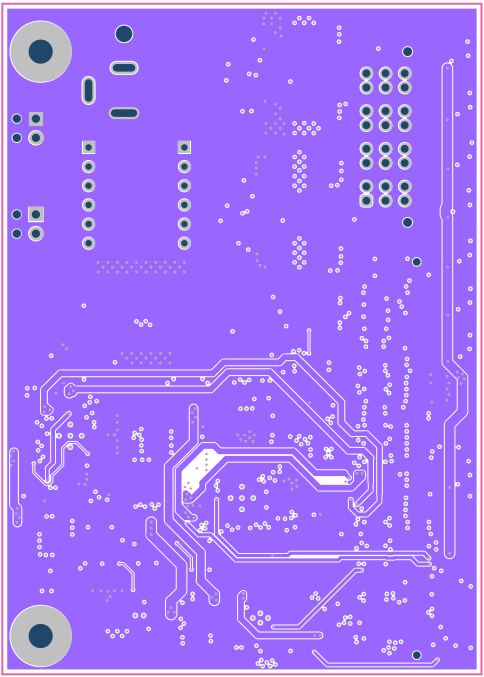
ALL ARTWORK VIEWED FROM TOP SIDE	BOARD #: TIDA-01480	REV: E2	SUN REV: Not In VersionControl
LAYER NAME =	TID #: TIDA-01480		
PLOT NAME = Signal Layer 1	GENERATED : 12/7/2017 11:06:30 AM	TEXAS INSTRUMENTS	



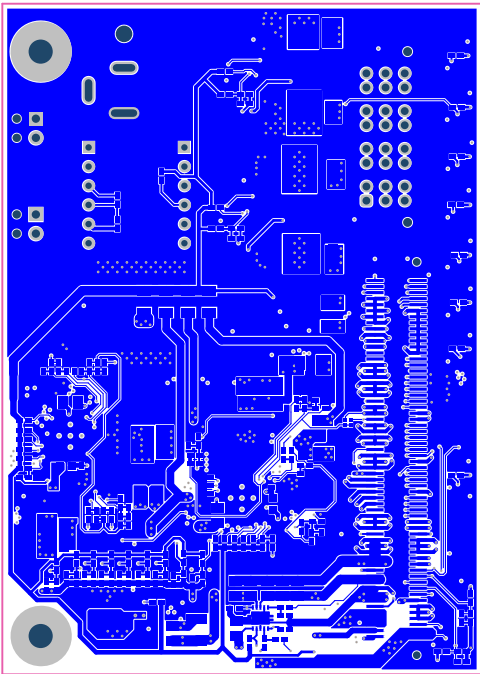
ALL ARTWORK VIEWED FROM TOP SIDE	BOARD #: TIDA-01480	REV: E2	SUN REV: Not In VersionControl
LAYER NAME =	TID #: TIDA-01480		
PLOT NAME = Signal Layer 2	GENERATED : 12/7/2017 11:06:31 AM	TEXAS INSTRUMENTS	



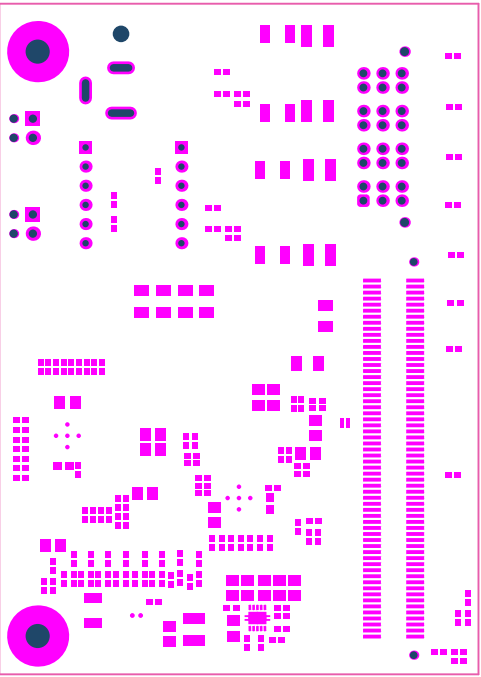
ALL ARTWORK VIEWED FROM TOP SIDE	BOARD #: TIDA-01480	REV: E2	SUN REV: Not In VersionControl
LAYER NAME =	TID #: TIDA-01480		
PLOT NAME = Signal Layer 3	GENERATED : 12/7/2017 11:06:33 AM	TEXAS INSTRUMENTS	



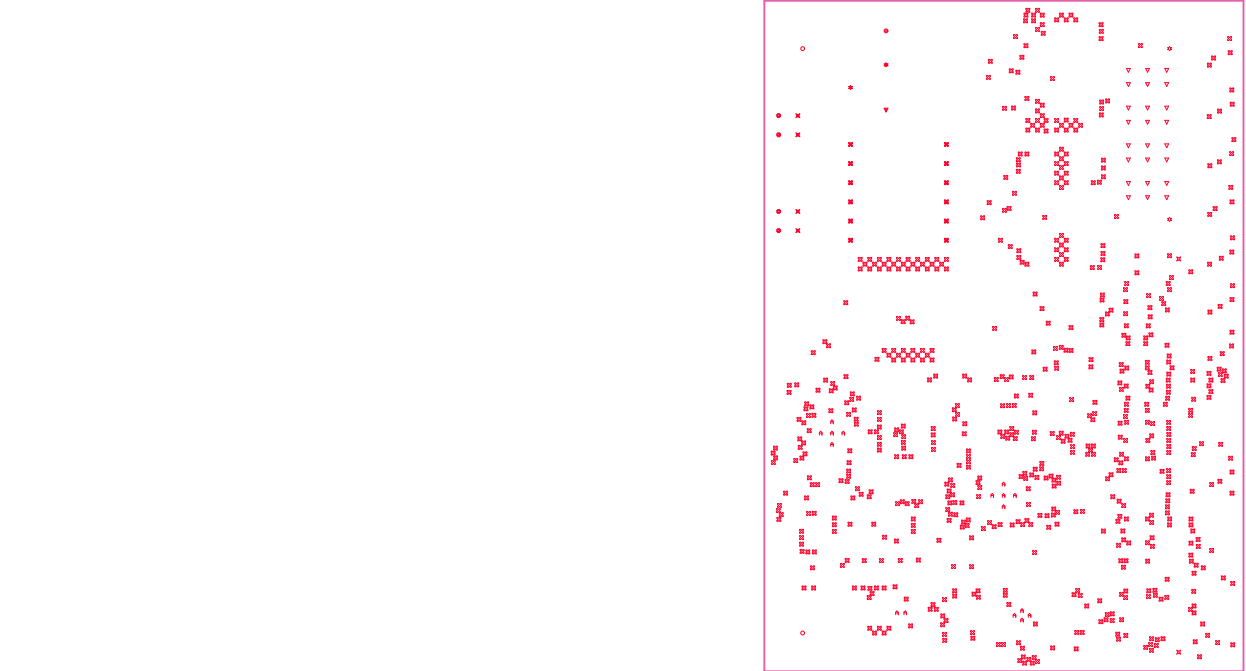
ALL ARTWORK VIEWED FROM TOP SIDE	BOARD #: TIDA-01480	REV: E2	SUN REV: Not In VersionControl
LAYER NAME =	TID #: TIDA-01480		
PLOT NAME = Signal Layer 4	GENERATED : 12/7/2017 11:06:35 AM	TEXAS INSTRUMENTS	



ALL ARTWORK VIEWED FROM TOP SIDE	BOARD #: TIDA-01480	REV: E2	SUN REV: Not In VersionControl
LAYER NAME = Bottom Layer	TID #: TIDA-01480		
PLOT NAME = Bottom Layer	GENERATED : 12/7/2017 11:06:36 AM	TEXAS INSTRUMENTS	



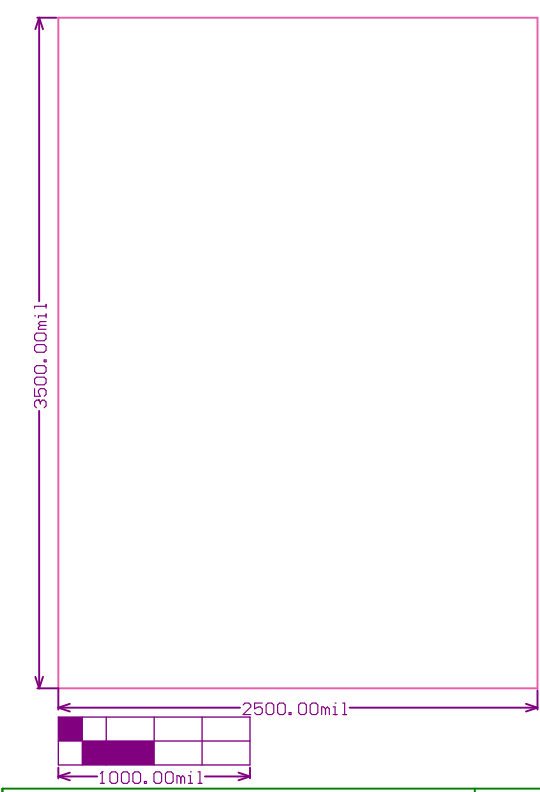
ALL ARTWORK VIEWED FROM TOP SIDE	BOARD #: TIDA-01480	REV: E2	SUN REV: Not In VersionControl
LAYER NAME = Bottom Solder	TID #: TIDA-01480		
PLOT NAME = Bottom Solder Mask	GENERATED : 12/7/2017 11:06:38 AM	TEXAS INSTRUMENTS	



Symbol	Count	Hole Size	Plated	Hole Type	Drill Layer Pair	Via/Pad	Hole Tolerance (+)
⌘	676	7.90mil (0.201mm)	PTH	Round	Top Layer - Bottom Layer	Via	
▽	24	40.95mil (1.040mm)	PTH	Round	Top Layer - Bottom Layer	Pad	
⌘	16	7.87mil (0.200mm)	PTH	Round	Top Layer - Bottom Layer	Via	
⌘	12	33.47mil (0.850mm)	PTH	Round	Top Layer - Bottom Layer	Pad	
⊙	4	43.31mil (1.100mm)	NPTH	Round	Top Layer - Bottom Layer	Pad	
⊗	4	43.31mil (1.100mm)	PTH	Round	Top Layer - Bottom Layer	Pad	
⊛	2	39.37mil (1.000mm)	PTH	Slot	Top Layer - Bottom Layer	Pad	
⊗	2	40.16mil (1.020mm)	NPTH	Round	Top Layer - Bottom Layer	Pad	
⊛	2	46.85mil (1.190mm)	NPTH	Round	Top Layer - Bottom Layer	Pad	
○	2	125.98mil (3.200mm)	PTH	Round	Top Layer - Bottom Layer	Pad	
▽	1	39.37mil (1.000mm)	PTH	Slot	Top Layer - Bottom Layer	Pad	
⊙	1	86.61mil (2.200mm)	NPTH	Round	Top Layer - Bottom Layer	Pad	
746 Total							

Slot definitions : Routed Path Length = Calculated from tool start centre position to tool end centre position.
Hole Length = Routed Path Length + Tool Size = Slot length as defined in the PCB layout

ALL ARTWORK VIEWED FROM TOP SIDE	BOARD #: TIDA-01480	REV: E2	SUN REV: Not In VersionControl
LAYER NAME = Drill Drawing	TID #: TIDA-01480		
PLOT NAME = Drill Drawing	GENERATED : 12/7/2017 11:06:41 AM	TEXAS INSTRUMENTS	



ALL ARTWORK VIEWED FROM TOP SIDE	BOARD #:	TIDA-01480	REV:	E2	SUN REV:	Not In VersionControl
LAYER NAME = M2 Board Dimensions	TID #:	TIDA-01480				
PLOT NAME = Board Dimensions	GENERATED	: 12/7/2017	11:06:45 AM	TEXAS INSTRUMENTS		