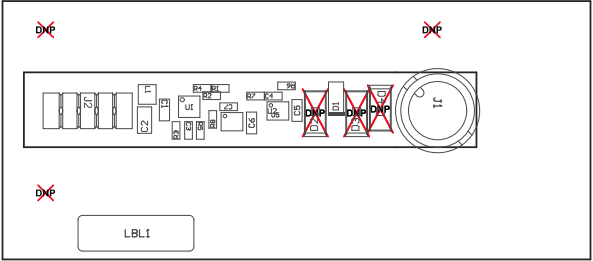
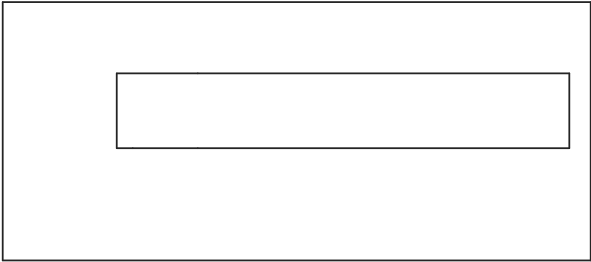


ZZ1 ■Install label in silkscreened box after final wash. Text shall be 8 pt font. Text shall be per the Label Table in the PDF schematic.  
ZZ2 ■These assemblies are ESD sensitive, ESD precautions shall be observed.  
ZZ3 ■These assemblies must be clean and free from flux and all contaminants. Use of no clean flux is not acceptable.  
ZZ4 ■These assemblies must comply with workmanship standards IPC-A-610 Class 2, unless otherwise specified.



COMPONENTS MARKED 'DNP' SHOULD NOT BE POPULATED.  
ASSEMBLY VARIANT: 001

PCB VIEWED FROM TOP SIDE	BOARD #: TIDA-01478	REV:	SUN REV: Not In VersionControl
	TID #: TIDA-01478		
PLOT NAME = Top Assembly Drawing	GENERATED : 6/2/2017	9:21:31 AM	TEXAS INSTRUMENTS



COMPONENTS MARKED 'DNP' SHOULD NOT BE POPULATED.  
ASSEMBLY VARIANT: 001

PCB VIEWED FROM BOTTOM SIDE	BOARD #: TIDA-01478	REV:	SUN REV: Not In VersionControl
	TID #: TIDA-01478		
PLOT NAME = Bottom Assembly Drawing	GENERATED : 6/2/2017	9:21:34 AM	TEXAS INSTRUMENTS