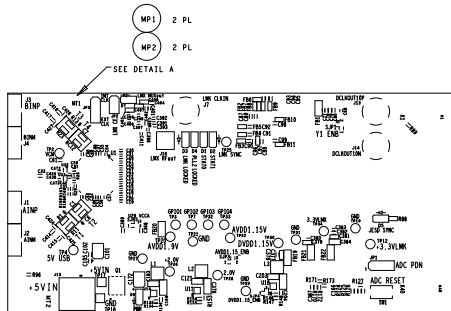
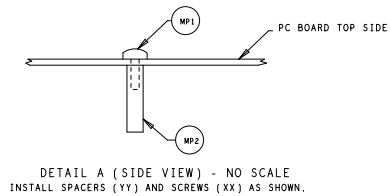
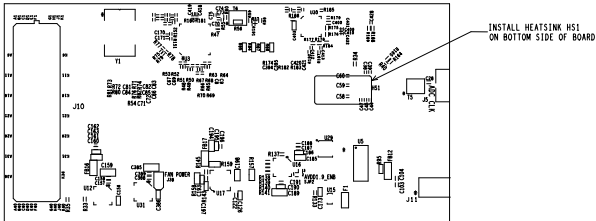


THIS DRAWING IS INTENDED TO HELP IN THE ASSEMBLY OF THE DESIGN.

1. REFER TO ODB++ FILE FOR SPECIFIC COMPONENT LOCATION INFORMATION.
2. USE WATER SOLUBLE FLUX DURING BOARD ASSEMBLY.
RoHS COMPLIANT AND LEAD FREE.
3. MARK BOARD'S SILKSCREEN WITH THE APPROPRIATE EVM PART NUMBER.
4. IPC-A-610 / ACCEPTABILITY OF ELECTRONIC ASSEMBLIES, CLASS2, CURRENT REVISION.
5. SOLDER FAN-SINK ASSEMBLY HS1 TO BOTTOM SIDE OF BOARD, UNDERNEATH U1. CONNECT FAN TO FAN POWER J38.



TOP VIEW



BOTTOM VIEW

UNLESS OTHERWISE SPECIFIED DIMENSIONS ARE IN INCHES TOLERANCES ARE: FRACTIONS DECIMALS ANGLES +/- .XX +/- .01 .XXX +/- .005 +/-	CONTRACT NO.		TEXAS INSTRUMENTS INC.	
	APPROVALS		DATE	
	DRAWN L. NGUYEN		08-22-16	
	ENGR R. PRENTICE		08-22-16	
MATERIAL SEE NOTE 5			ASSEMBLY DRAWING ADC3xRFxxEVM	
FINISH SEE NOTES 7, 8, 9			SIZE B	REV. E
DO NOT SCALE DRAWING			SCALE NONE	SHEET 1 OF 1