

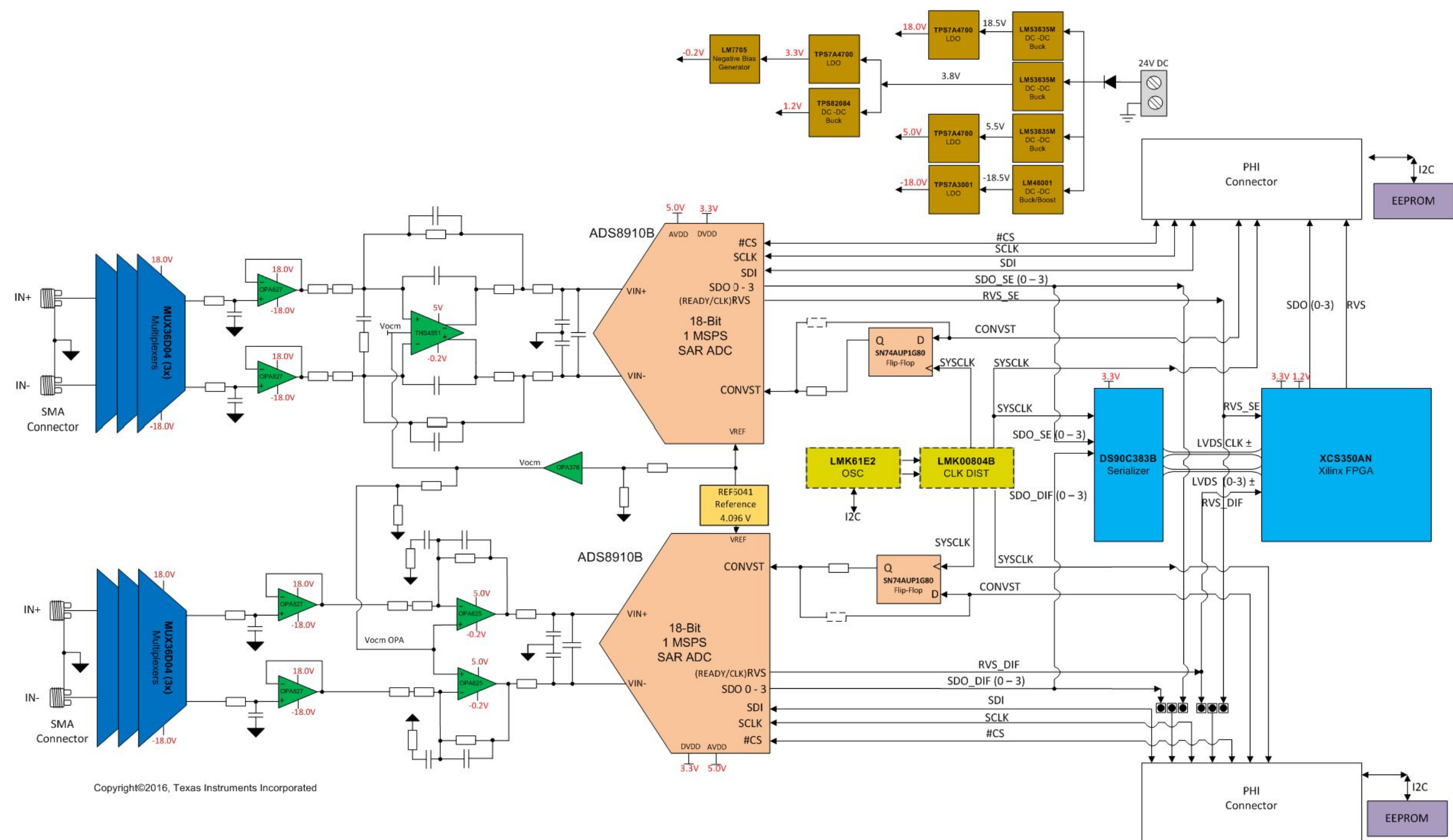
Revision History					
Rev	ECN #	Approved Date	Approved by	Notes	
N/A	N/A	N/A	N/A	N/A	

A

B

C

D

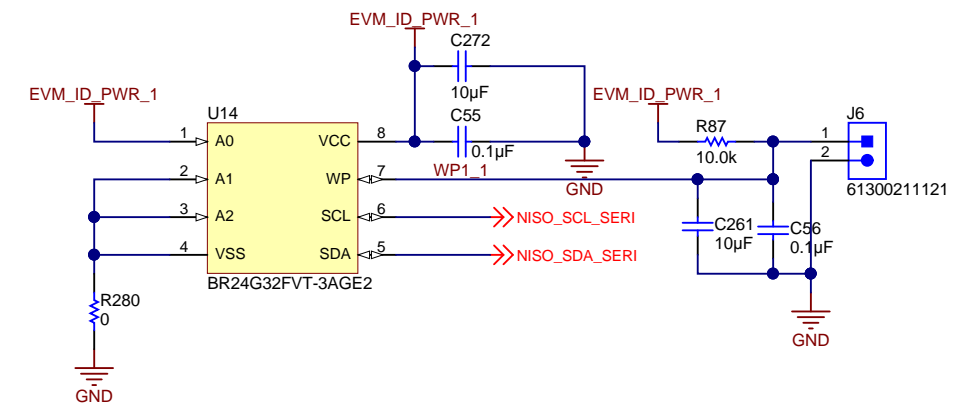
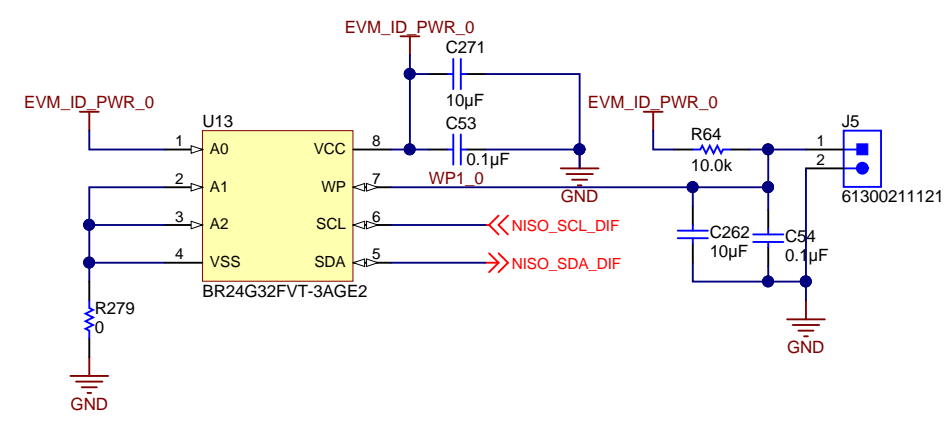
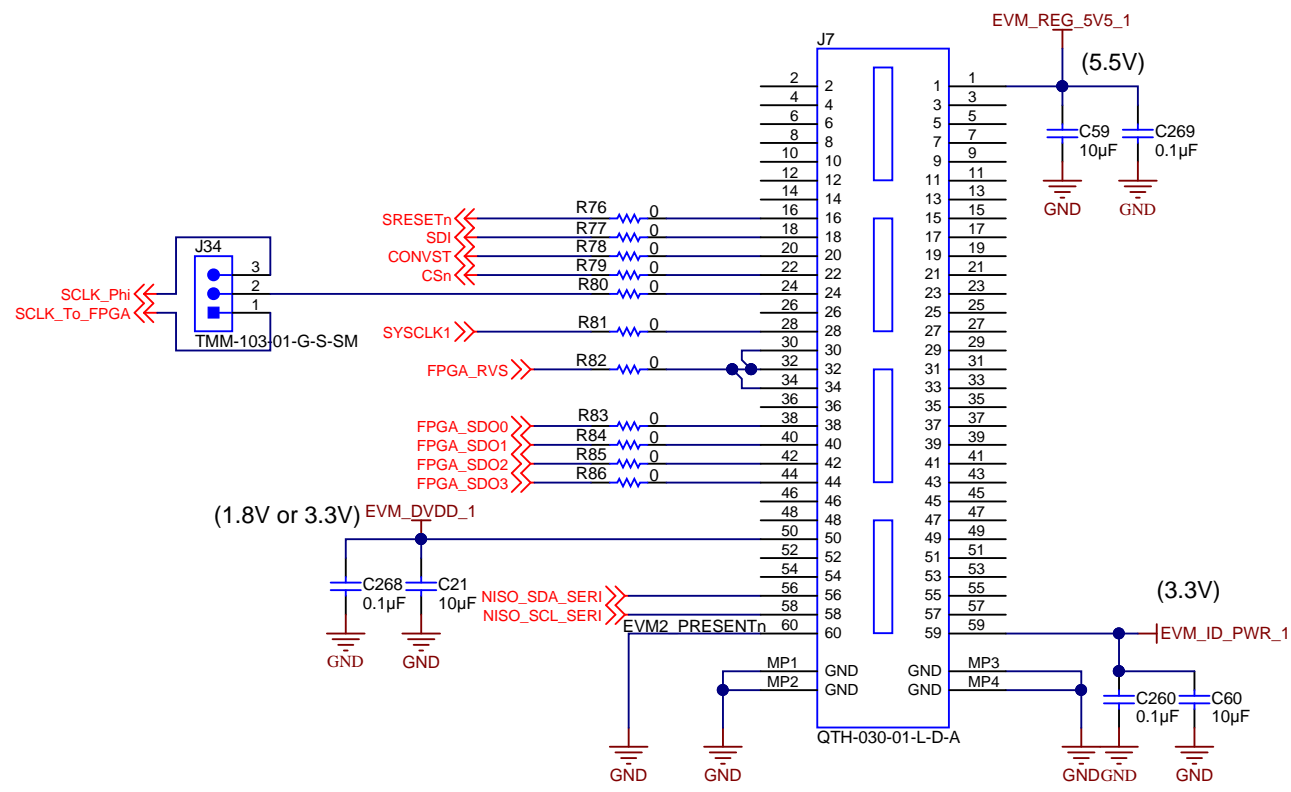
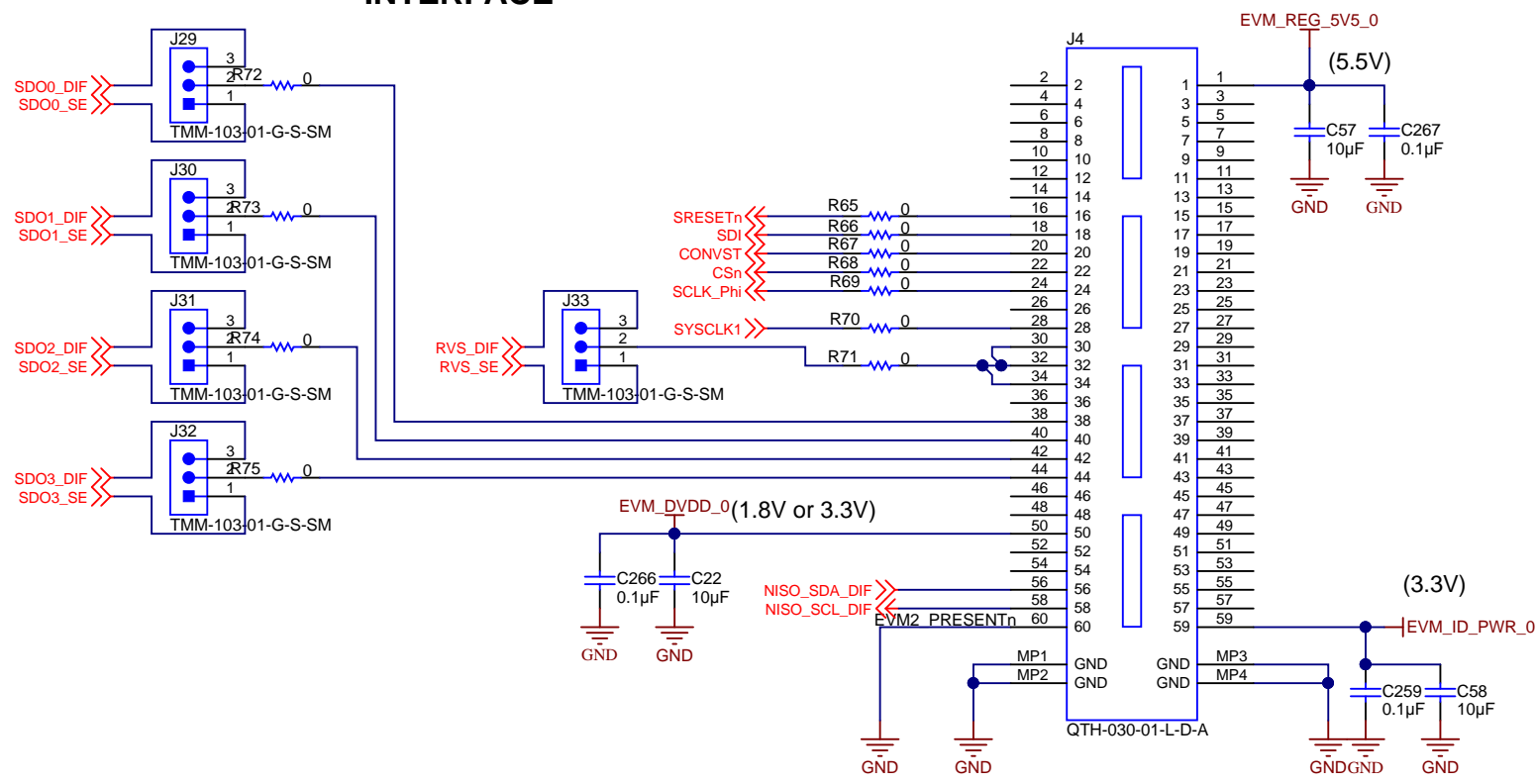


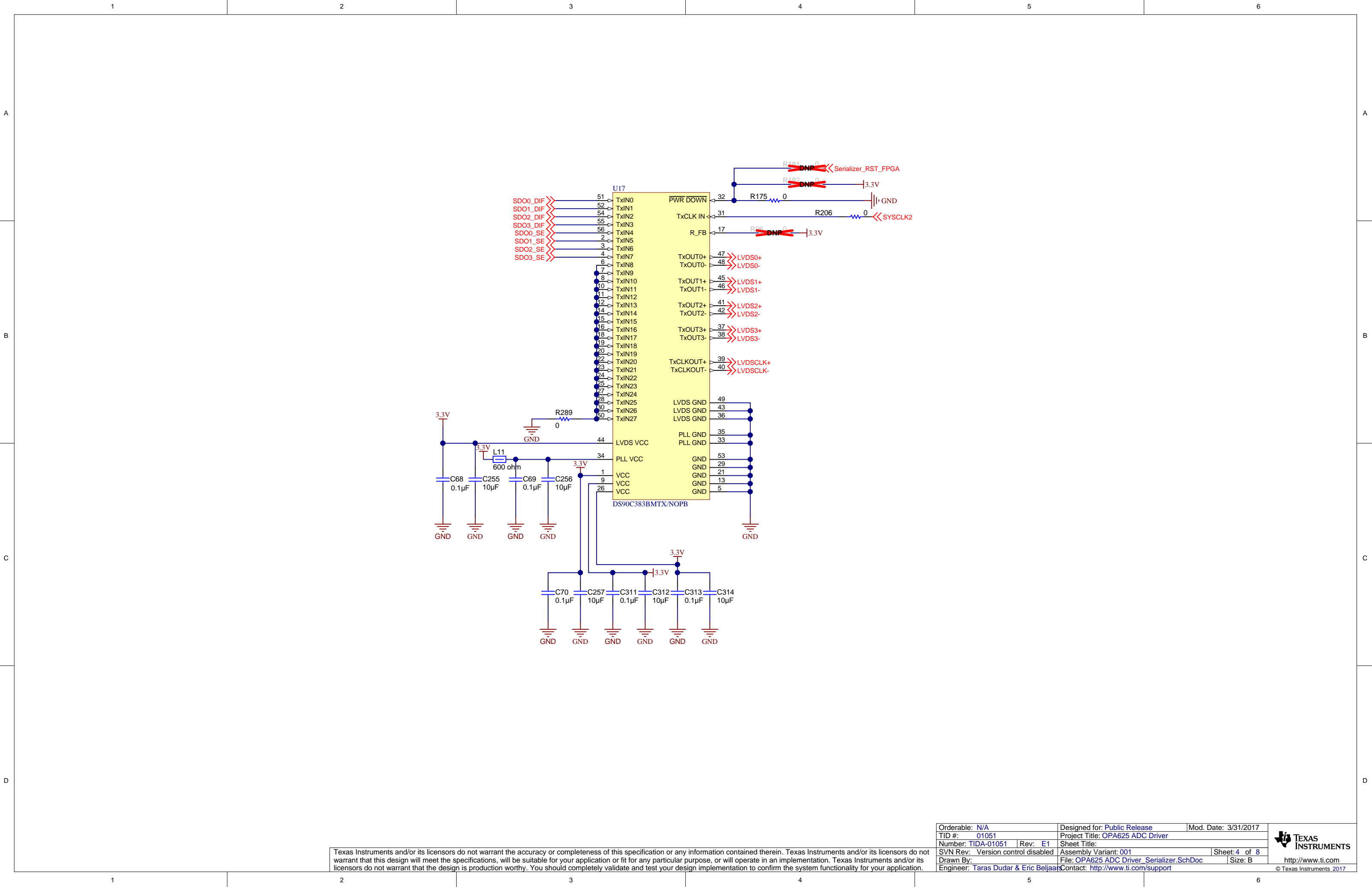
Copyright©2016, Texas Instruments Incorporated

Texas Instruments and/or its licensors do not warrant the accuracy or completeness of this specification or any information contained therein. Texas Instruments and/or its licensors do not warrant that this design will meet the specifications, will be suitable for your application or fit for any particular purpose, or will operate in an implementation. Texas Instruments and/or its licensors do not warrant that the design is production worthy. You should completely validate and test your design implementation to confirm the system functionality for your application.

Orderable: N/A	Designed for: Public Release	Mod. Date: 3/31/2017
TID #: 01051	Project Title: OPA625 ADC Driver	
Number: TIDA-01051	Rev: E1	Sheet Title:
SVN Rev: Version control disabled	Assembly Variant: 001	Sheet: 1 of 8
Drawn By:	File: OPA625 ADC Driver_CoverSheet.SchDoc	Size: B
Engineer: Taras Dudar & Eric Beljaars	Contact: http://www.ti.com/support	

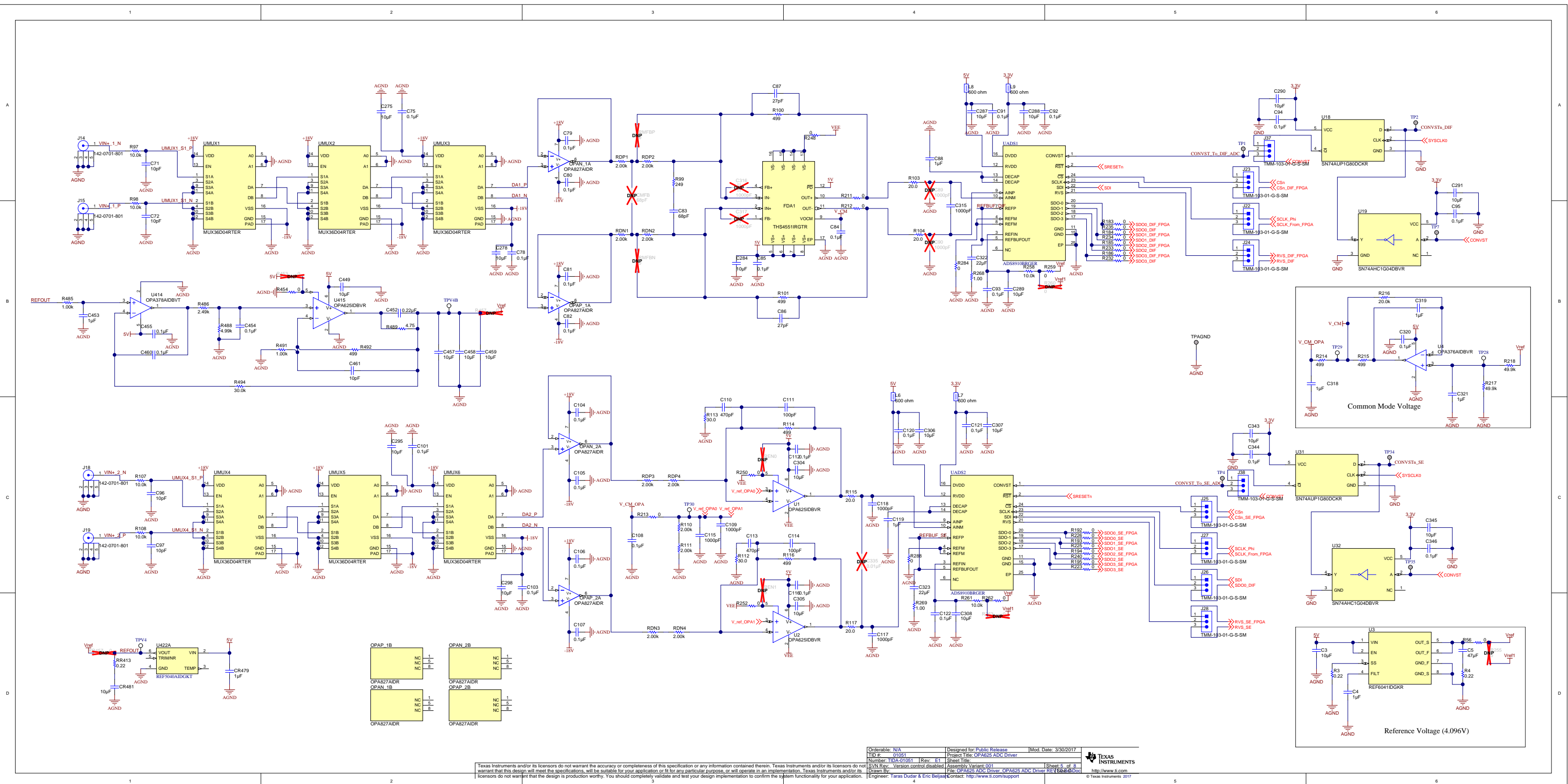
PHI PLATFORM
INTERFACE

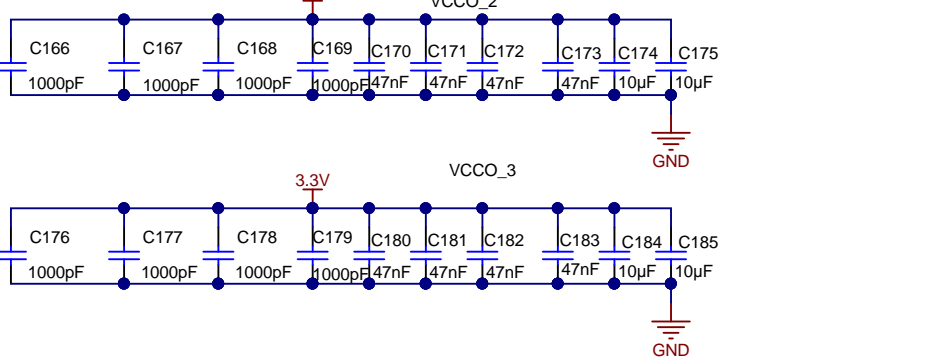
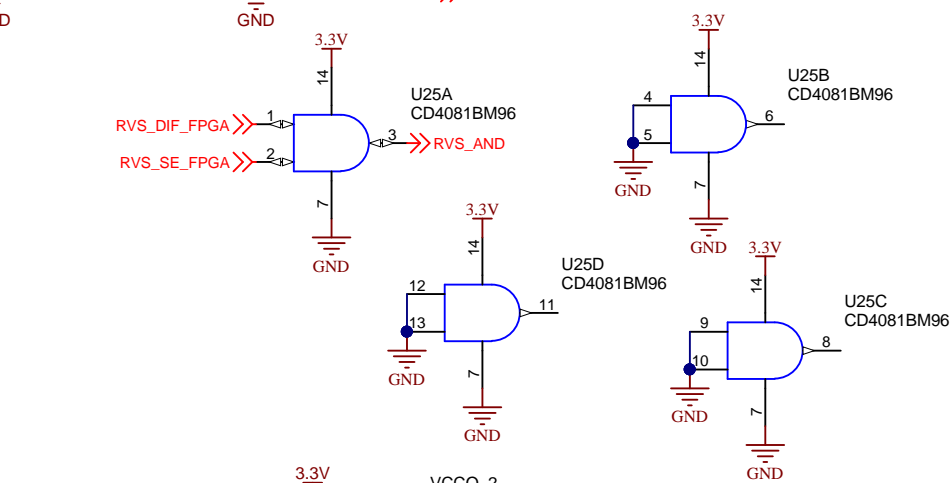
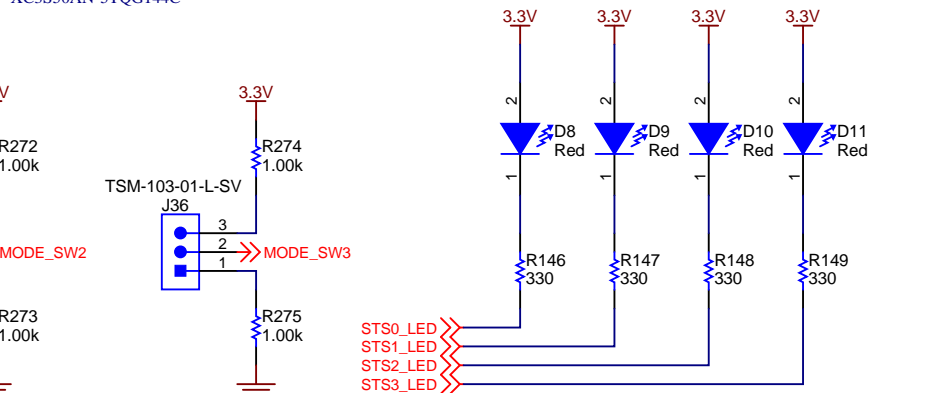
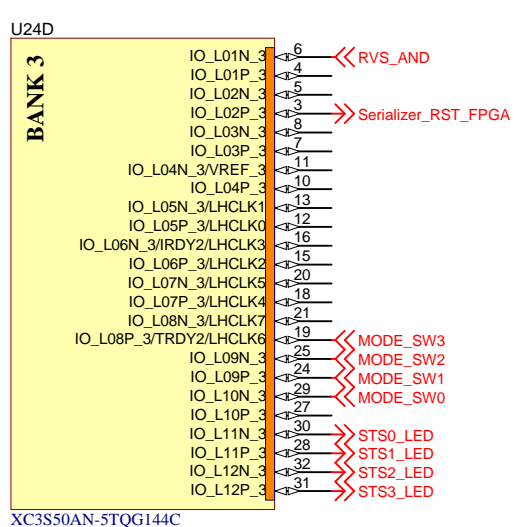
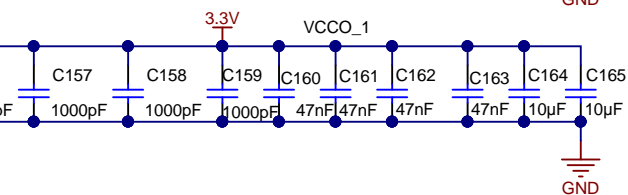
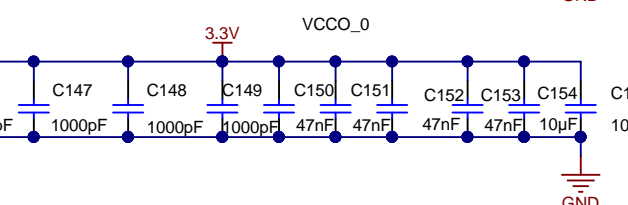
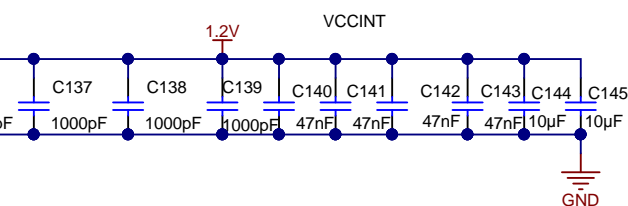
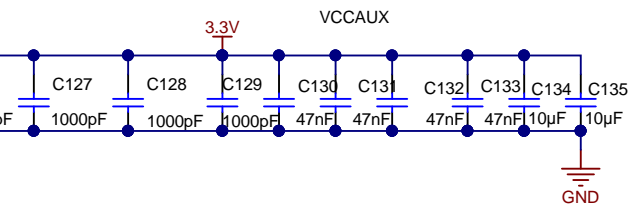
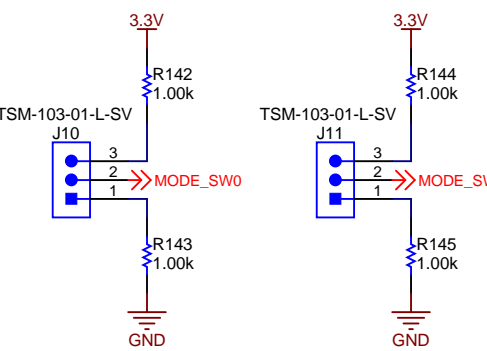
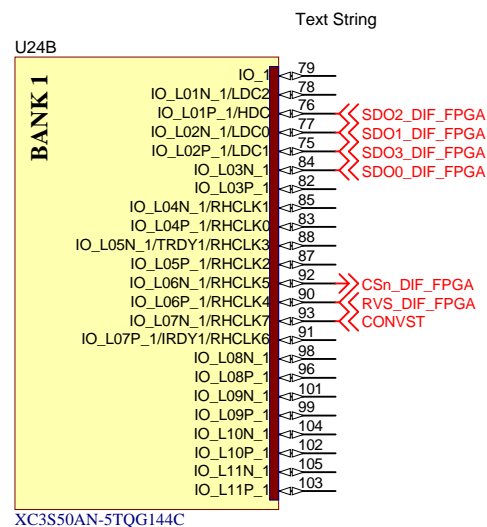
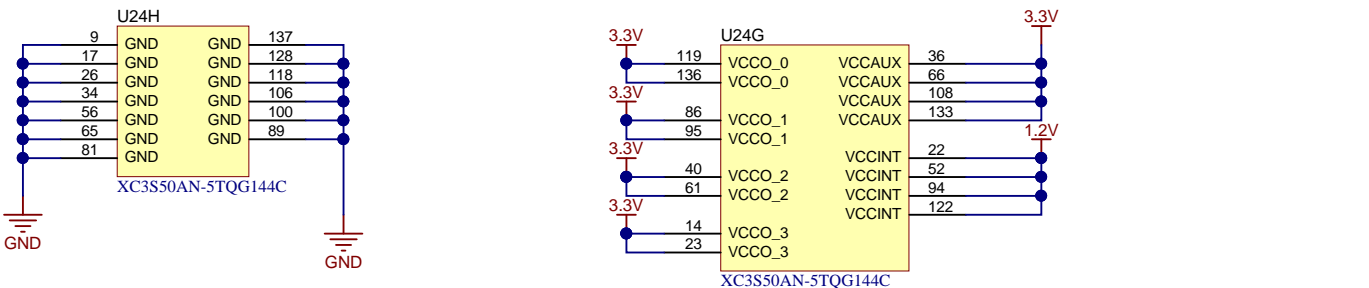
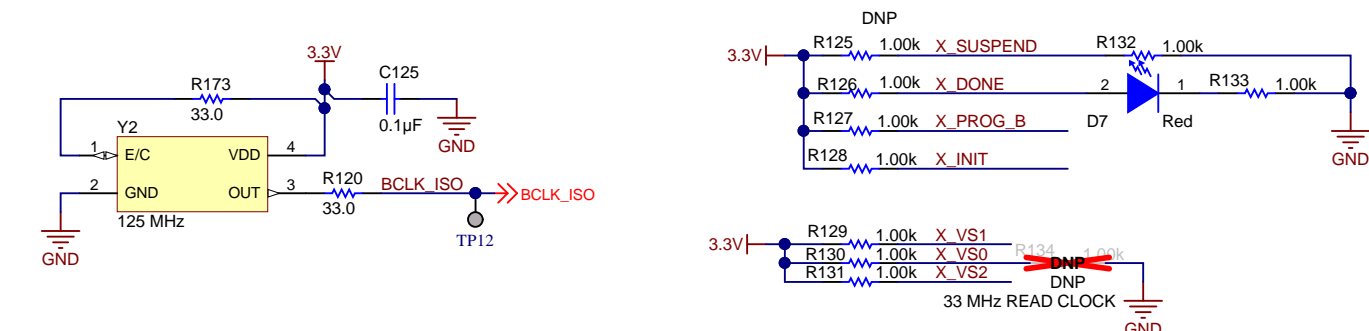
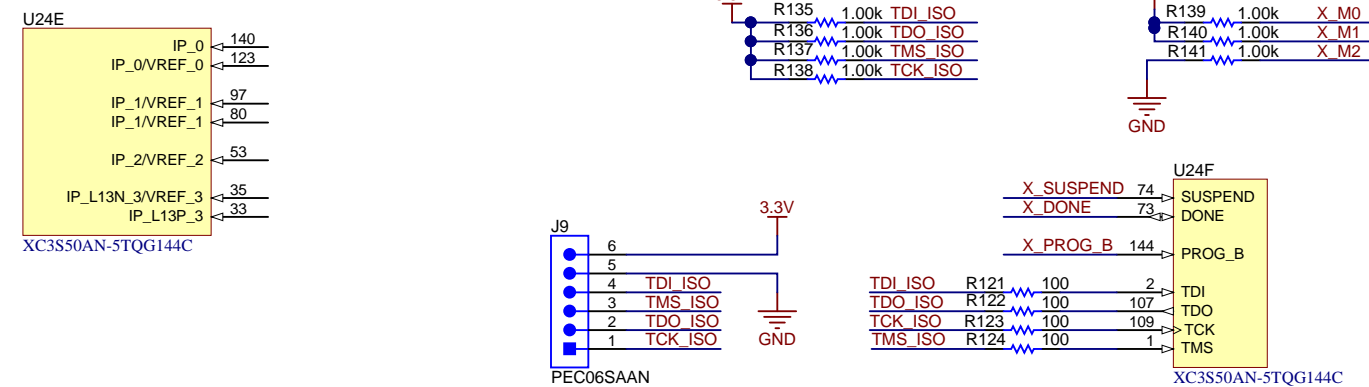
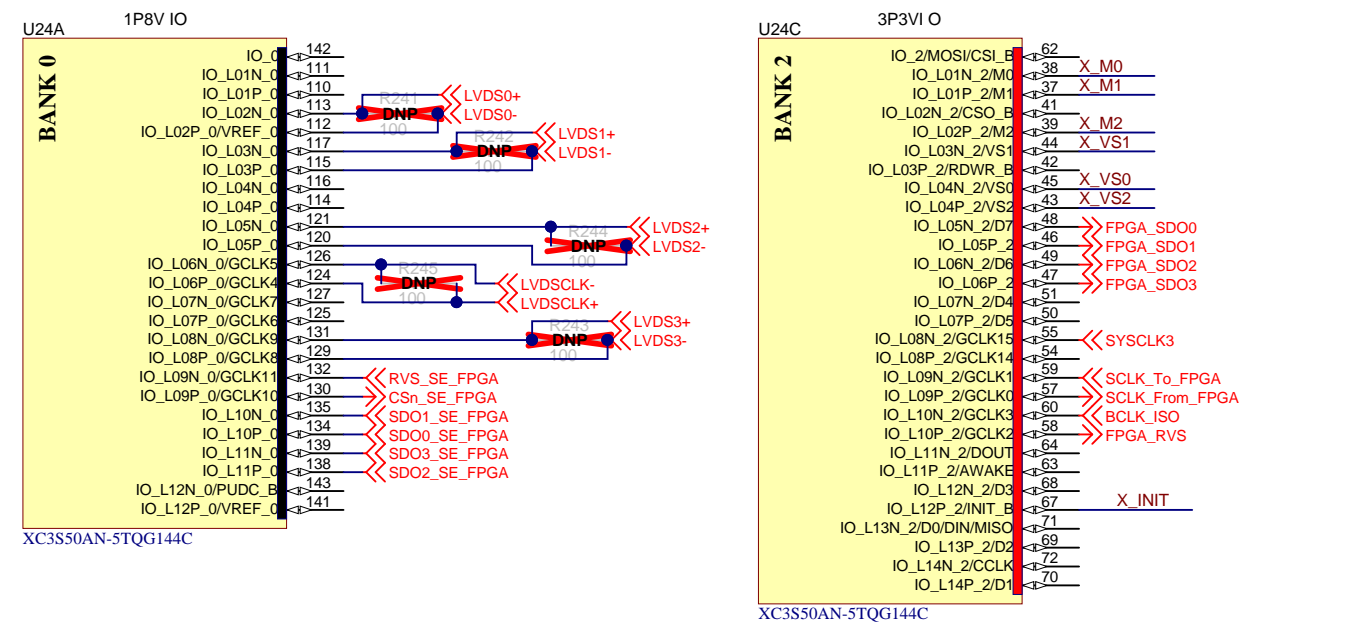


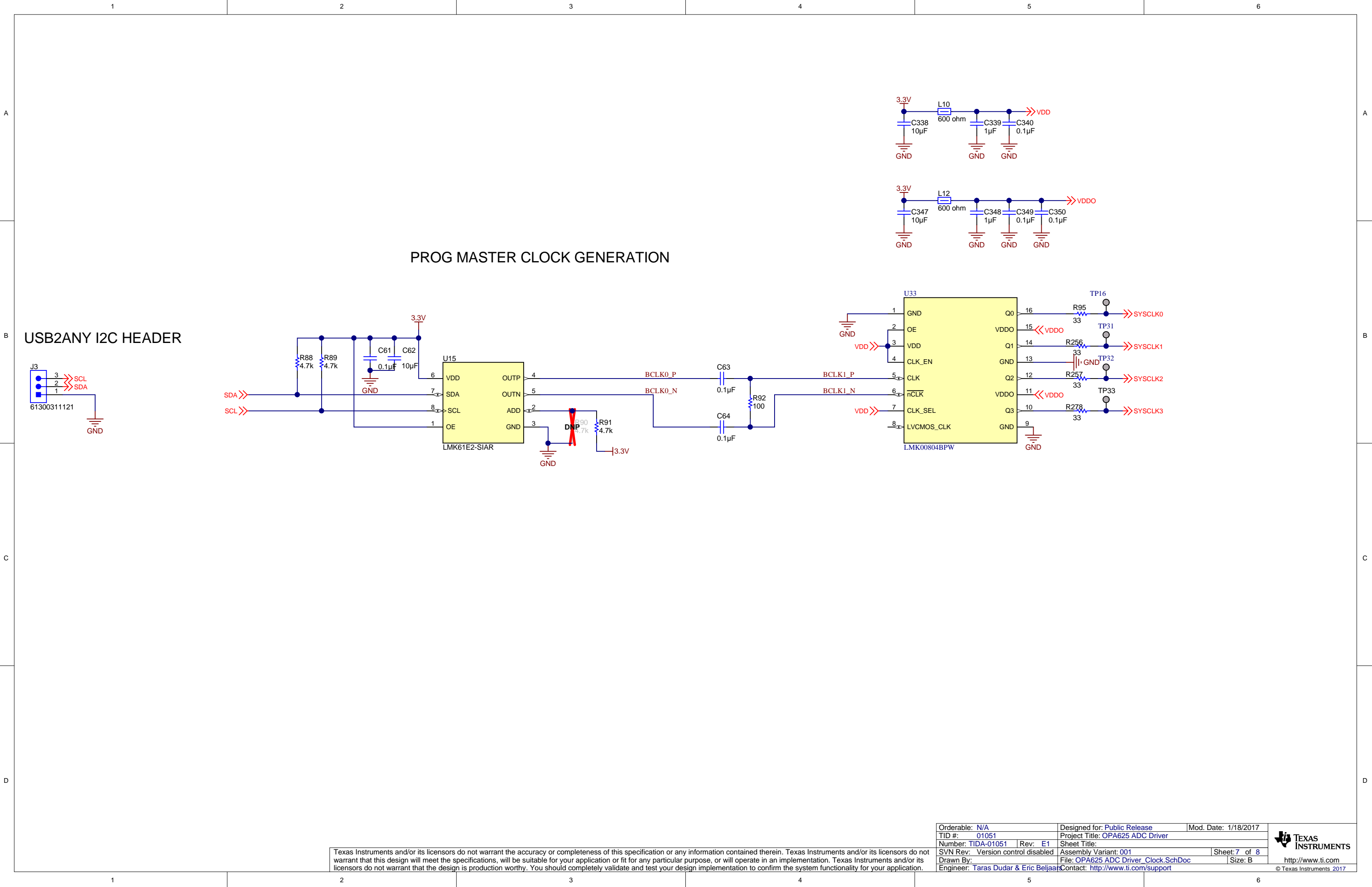


Texas Instruments and/or its licensors do not warrant the accuracy or completeness of this specification or any information contained therein. Texas Instruments and/or its licensors do not warrant that this design will meet the specifications, will be suitable for your application or fit for any particular purpose, or will operate in an implementation. Texas Instruments and/or its licensors do not warrant that the design is production worthy. You should completely validate and test your design implementation to confirm the system functionality for your application.

Orderable: N/A		Designed for: Public Release	Mod. Date: 3/31/2017
TID #:	01051	Project Title: OPA625 ADC Driver	
Number:	TIDA-01051	Rev:	E1
SVN Rev: Version control disabled		Assembly Variant: 001	Sheet: 4 of 8
Drawn By:		File: OPA625 ADC Driver_Serializer.SchDoc	Size: B
Engineer: Taras Dudar & Eric Beljaars		Contact: http://www.ti.com/support	

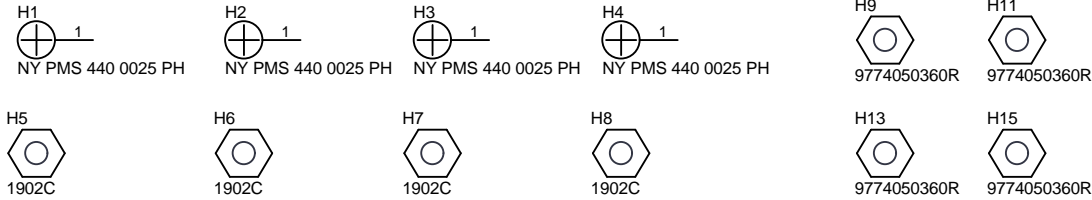






Texas Instruments and/or its licensors do not warrant the accuracy or completeness of this specification or any information contained therein. Texas Instruments and/or its licensors do not warrant that this design will meet the specifications, will be suitable for your application or fit for any particular purpose, or will operate in an implementation. Texas Instruments and/or its licensors do not warrant that the design is production worthy. You should completely validate and test your design implementation to confirm the system functionality for your application.

Orderable: N/A		Designed for: Public Release	Mod. Date: 1/18/2017
TID #: 01051		Project Title: OPA625 ADC Driver	
Number: TIDA-01051	Rev: E1	Sheet Title:	
SVN Rev: Version control disabled		Assembly Variant: 001	Sheet: 7 of 8
Drawn By:		File: OPA625 ADC Driver_Clock.SchDoc	Size: B
Engineer: Taras Dudar & Eric Beljaars		Contact: http://www.ti.com/support	



PCB Number: TIDA-01051
PCB Rev: E1

PCB
LOGO
Pb-Free Symbol

Label Table	
Variant	Label Text
001	ChangeMe!
002	ChangeMe!

ZZ2
Assembly Note
These assemblies are ESD sensitive, ESD precautions shall be observed.

ZZ3
Assembly Note
These assemblies must be clean and free from flux and all contaminants. Use of no clean flux is not acceptable.

ZZ4
Assembly Note
These assemblies must comply with workmanship standards IPC-A-610 Class 2, unless otherwise specified.