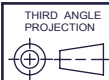
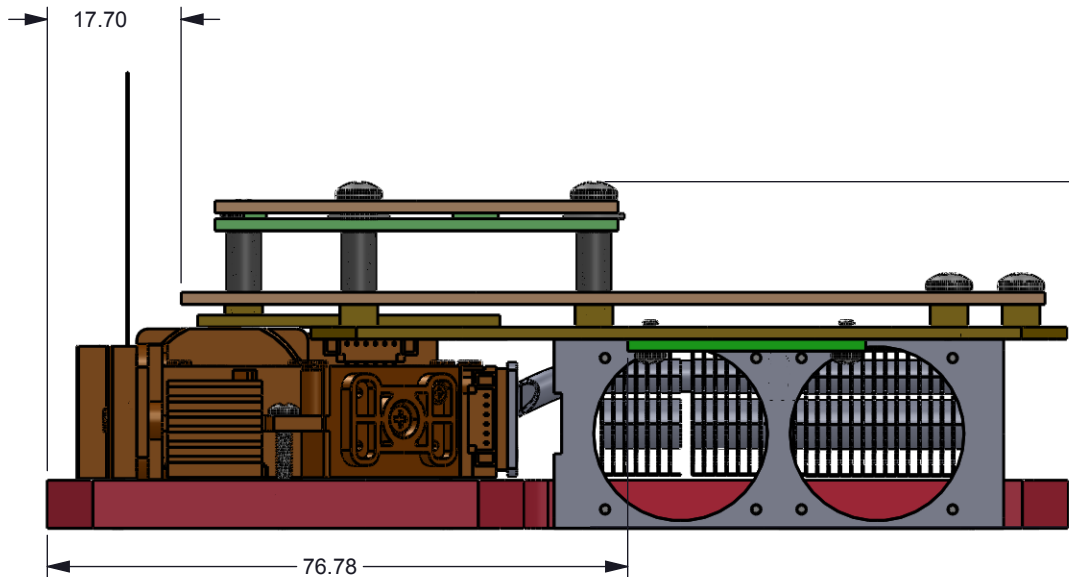
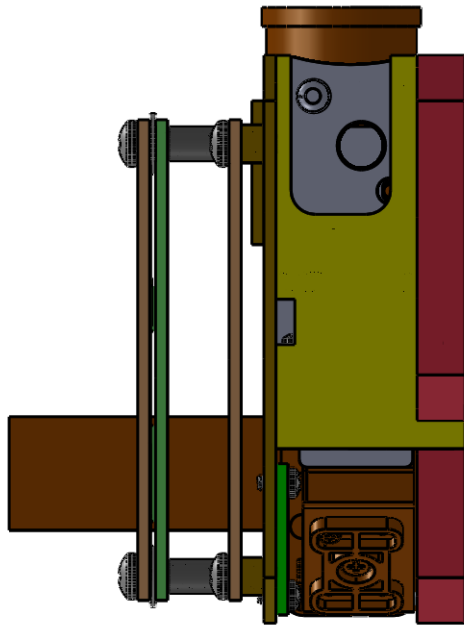
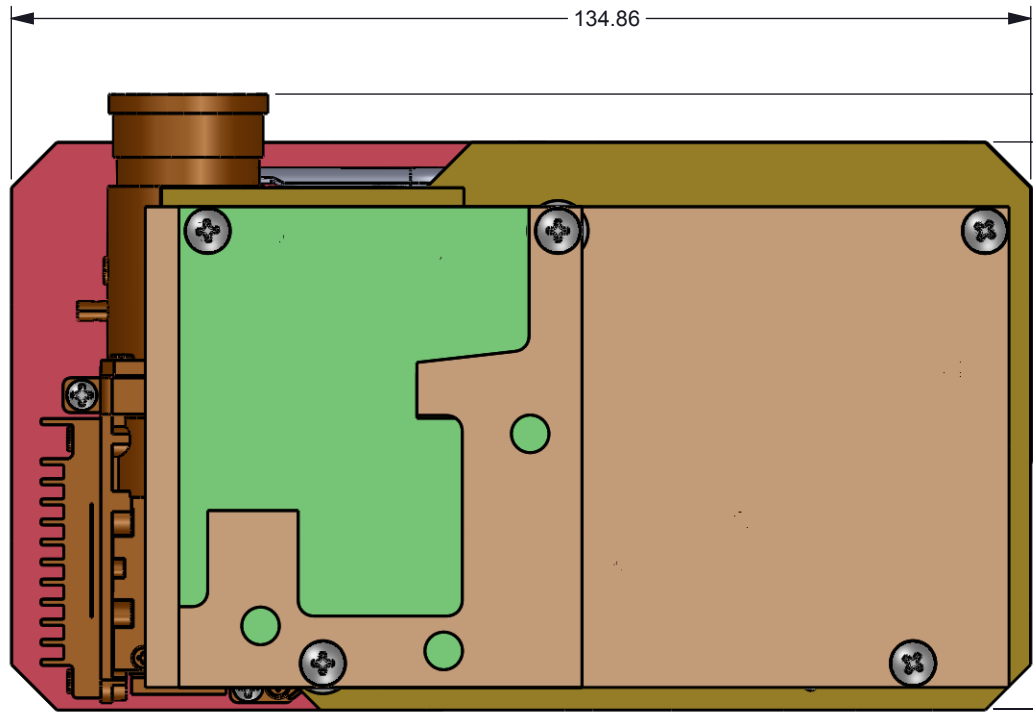


NOTES: UNLESS OTHERWISE SPECIFIED:

© COPYRIGHT 2014 TEXAS INSTRUMENTS  
UNPUBLISHED, ALL RIGHTS RESERVED

REVISIONS		DATE	BY
REV	DESCRIPTION	DATE	BY
---	INITIAL RELEASE	09-11-2014	SS



UNLESS OTHERWISE SPECIFIED

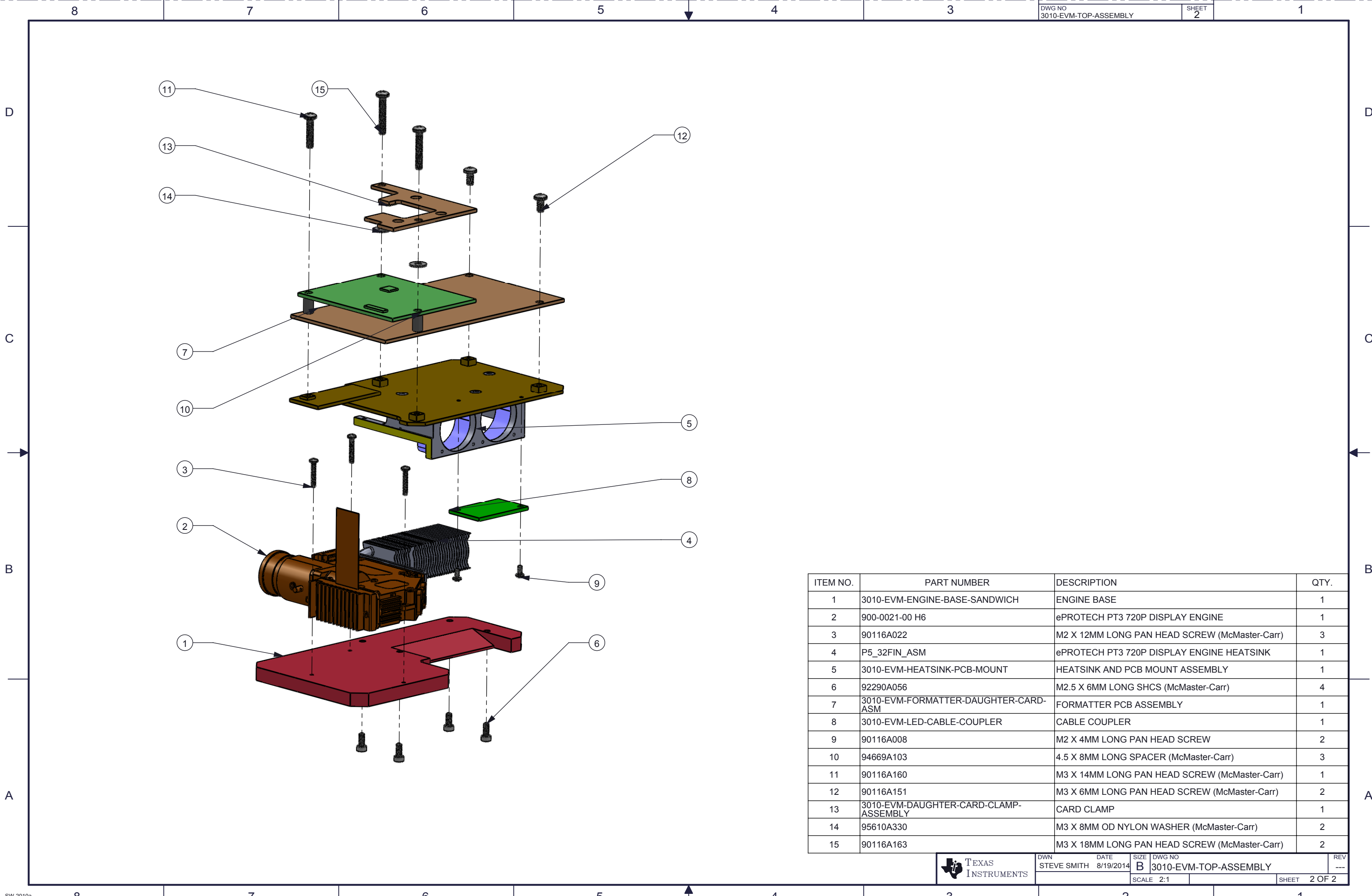
- DIMENSIONS ARE IN MILLIMETERS
- TOLERANCES: ANGLES  $\pm 1^\circ$   
2 PLACE DECIMALS  $\pm 0.25$   
1 PLACE DECIMALS  $\pm 0.50$
- DIMENSIONAL LIMITS APPLY BEFORE PROCESSES
- INTERPRET DIMENSIONS IN ACCORDANCE WITH ASME Y14.5M-1994
- REMOVE ALL BURRS AND SHARP EDGES
- PARENTHETICAL INFO FOR REF ONLY

DWN STEVE SMITH	DATE 8/19/2014
Engr STEVE SMITH	8/19/2014
CQE/QA	
CM	
Apprvd	



DLP LIGHTCRAFTER 3010 EVM

SIZE B	DWG NO 3010-EVM-TOP-ASSEMBLY	REV ---
SCALE 1:2		SHEET 1 OF 2



ITEM NO.	PART NUMBER	DESCRIPTION	QTY.
1	3010-EVM-ENGINE-BASE-SANDWICH	ENGINE BASE	1
2	900-0021-00 H6	ePROTECH PT3 720P DISPLAY ENGINE	1
3	90116A022	M2 X 12MM LONG PAN HEAD SCREW (McMaster-Carr)	3
4	P5_32FIN_ASM	ePROTECH PT3 720P DISPLAY ENGINE HEATSINK	1
5	3010-EVM-HEATSINK-PCB-MOUNT	HEATSINK AND PCB MOUNT ASSEMBLY	1
6	92290A056	M2.5 X 6MM LONG SHCS (McMaster-Carr)	4
7	3010-EVM-FORMATTER-DAUGHTER-CARD-ASM	FORMATTER PCB ASSEMBLY	1
8	3010-EVM-LED-CABLE-COUPLER	CABLE COUPLER	1
9	90116A008	M2 X 4MM LONG PAN HEAD SCREW	2
10	94669A103	4.5 X 8MM LONG SPACER (McMaster-Carr)	3
11	90116A160	M3 X 14MM LONG PAN HEAD SCREW (McMaster-Carr)	1
12	90116A151	M3 X 6MM LONG PAN HEAD SCREW (McMaster-Carr)	2
13	3010-EVM-DAUGHTER-CARD-CLAMP-ASSEMBLY	CARD CLAMP	1
14	95610A330	M3 X 8MM OD NYLON WASHER (McMaster-Carr)	2
15	90116A163	M3 X 18MM LONG PAN HEAD SCREW (McMaster-Carr)	2