

8

7

6

5

4

3

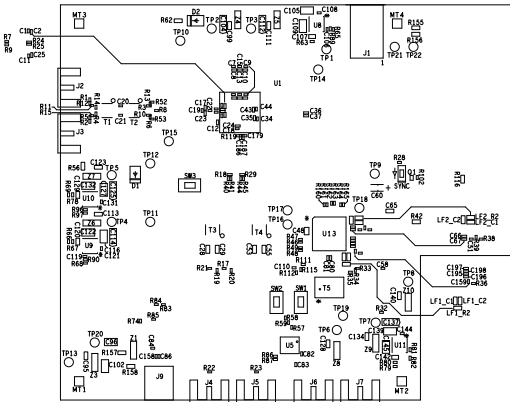
2

1

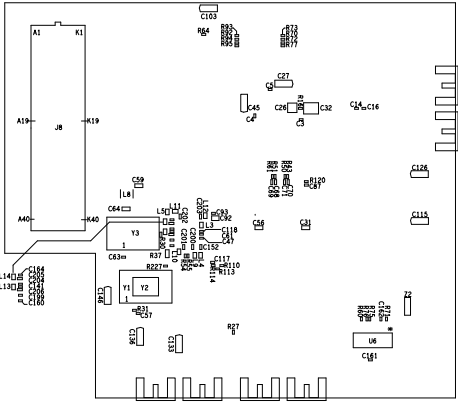
REVISIONS				
ZONE	LTR	DESCRIPTION		DATE

NOTES:

1. THIS DRAWING IS INTENDED TO HELP IN THE ASSEMBLY OF THE DESIGN.
REFER TO ODB++ FILE FOR SPECIFIC COMPONENT LOCATION INFORMATION.
2. USE WATER SOLUBLE FLUX DURING BOARD ASSEMBLY.
3. ASSEMBLY MUST BE RoHS COMPLIANT AND LEAD FREE.



COMPONENT SIDE



SOLDER SIDE

UNLESS OTHERWISE SPECIFIED DIMENSIONS ARE IN INCHES TOLERANCES ARE: FRACTIONS DECIMALS ANGLES +/- .XX +/- .01 +/- .XXX +/- .005 +/-	CONTRACT NO.		TEXAS INSTRUMENTS INC.			
	APPROVALS		DATE		ASSEMBLY DRAWING, ADC14X250 EVM	
	DRAWN L NGUYEN		10-04-15			
	ENG J CARNES		10-04-15			
MATERIAL						
FINISH			SIZE	CODE IDENT NO.	DRAWING NO.	REV.
			D			B
DO NOT SCALE DRAWING			SCALE			