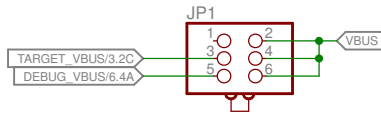


Power Control Jumper:

- 1) To power from Debug install jumper on pins 5 - 6
- 2) To power from Target USB install jumper on pins 3 - 4
- 3) To power from BoosterPack 5V install jumper on pins 1 - 2
This is also the off position if BoosterPack does not supply power

When powered from BoosterPack TPS2052B does not provide current limit protection.

When powered by BoosterPack, USB host mode does not supply power to connected devices

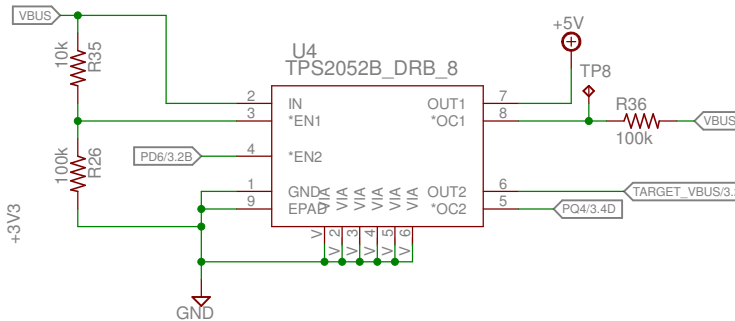
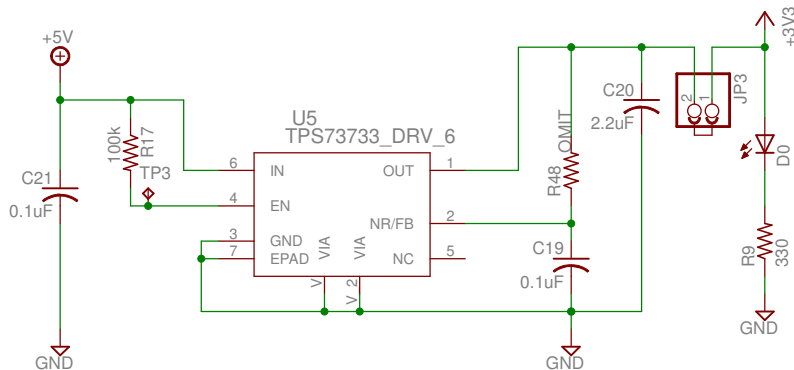


H4
MOUNT-HOLE3.2

H6
MOUNT-HOLE3.2

H1
MOUNT-HOLE3.2

Primary 3.3V regulator
Disconnect JP3 to power device from 3V3 BoosterPack



TPS2052B provides current limit for main 5V power.
Also provides power switching for USB host/OTG modes
For Host/OTG:
PD6 configured as USB0EPEN peripheral function.
PQ4 configure as individual pin interrupt. Indicates power fault on the USB bus. USB0PFLT peripheral pin not available due to pin mux and use on BoosterPacks.
USB Host mode does not supply power to devices when powered from a BoosterPack
For Applications that do not use USB:
Configure PD6 as input with internal pull-down enabled. Turns off power to TARGET_VBUS

TITLE: EK-TM4C1294XL REV D

Document Number:

REV:

Date: 1/24/2014 4:55:11 PM

Sheet: 5/6

