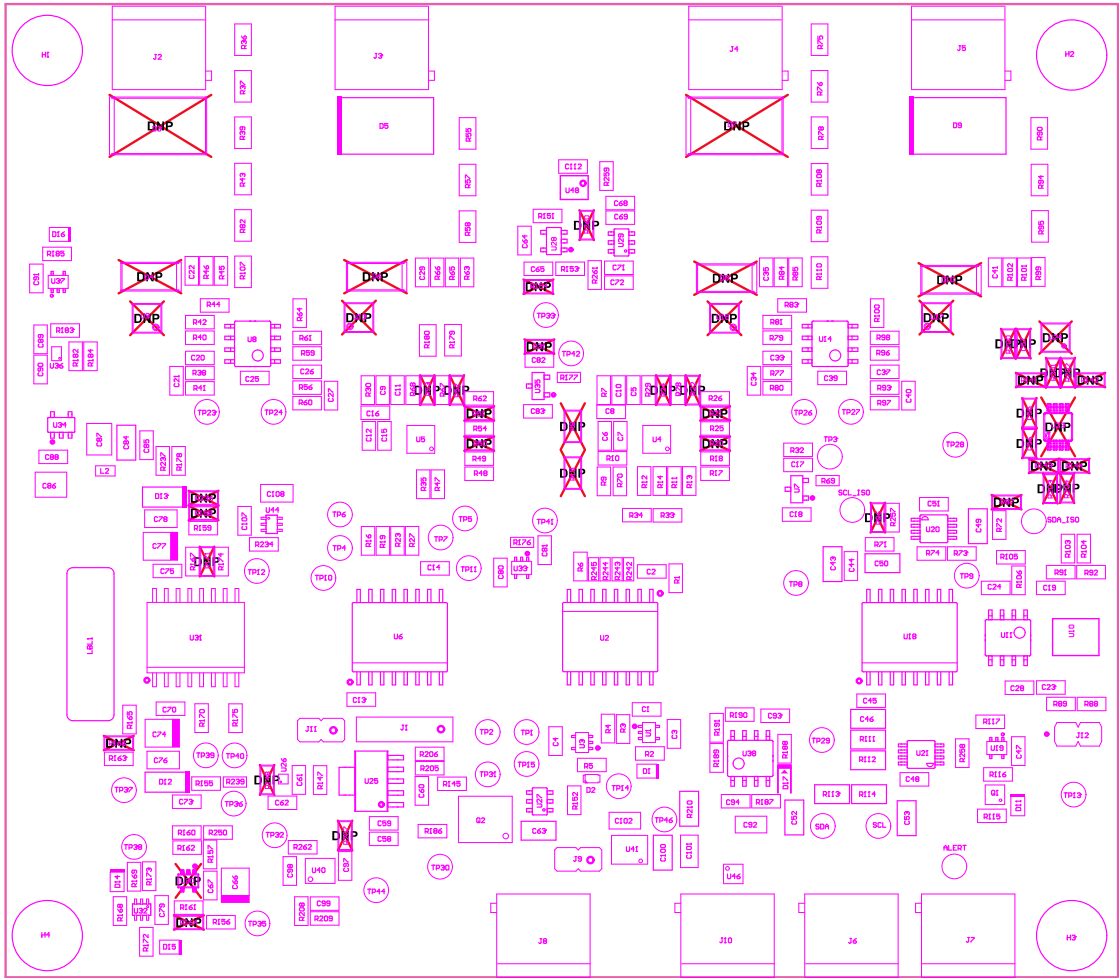


- 221 ■ Install label in silkscreened box after final wash. Text shall be 8 pt font. Text shall be per the Label Table in the PDF schematic.
- 222 ■ These assemblies are ESD sensitive, ESD precautions shall be observed.
- 223 ■ These assemblies must be clean and free from flux and all contaminants. Use of no clean flux is not acceptable.
- 224 ■ These assemblies must comply with workmanship standards IPC-A-610 Class 2, unless otherwise specified.

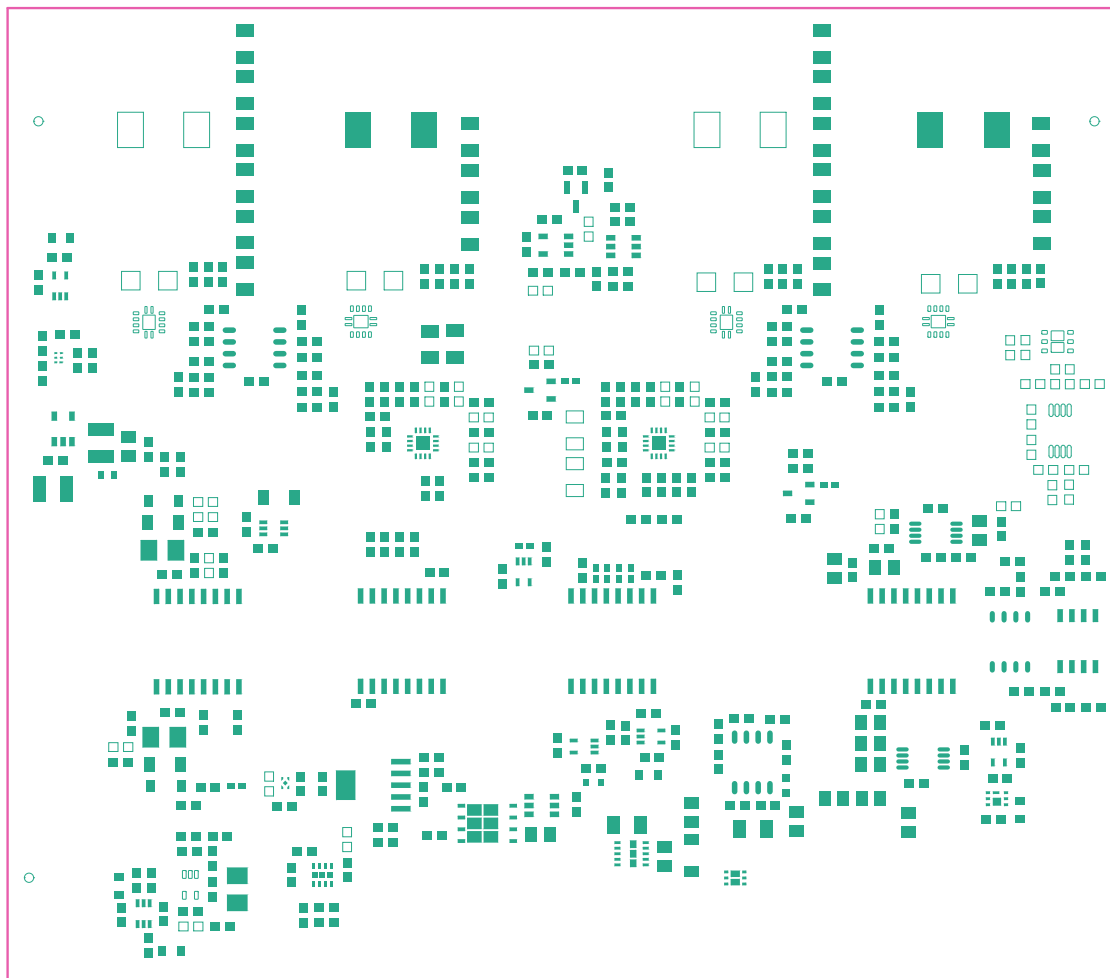


COMPONENTS MARKED "DNP" SHOULD NOT BE POPULATED.

ASSEMBLY VARIANT:

001

PCB VEHICLED FROM TOP SIDE	BOARD #:	TID#	00430_REV1_0057128	REV#	E2	SUN REV#	Not In Version Control
HS Assembly Top	TID #:	00430					
PLOT NAME = Top Layer Assembly Drawing	GENERATED :	3/6/2021	4:08:41 PM			TEXAS INSTRUMENTS	



Top Paste



Bottom Paste

PLOT NAME = Bottom Area (see page 10 of 10)		ORIENTED TO	3'-0" X 3'-0"	4'-0" X 4'-0"	TEXT IS 1/8" HIGH
LINE WEIGHTS		LTD. # 00450			
POB CUTTED FROM BOTTOM EDGE		BOARD #	110A-00450-00450	REV	2ND REV
		NOT IN RELATIONSHIP			

ASSEMBLY DRAWING
DO NOT SCALE

